

280 Trumbull Street
Hartford, CT 06103-3597
Main (860) 275-8200
Fax (860) 275-8299
jmiranda@rc.com
Direct (860) 275-8227

Also admitted in District of
Columbia and Massachusetts

Via Hand Delivery and First Class Mail

June 15, 2009

S. Derek Phelps
Executive Director
Connecticut Siting Council
Ten Franklin Square
New Britain, CT 06051

Re: **Docket No. 374 - Application of Cellco Partnership d/b/a Verizon Wireless for a Certificate of Environmental Compatibility and Public Need for the Construction, Maintenance and Operation of a Wireless Telecommunications Facility at 199 Town Farm Road, Farmington, Connecticut**

Dear Mr. Phelps:

At the May 14, 2009 hearing in connection with the above-referenced matter, the Connecticut Siting Council ("Council") requested that Cellco Partnership d/b/a Verizon Wireless ("Cellco") submit the following materials by June 15, 2009:

- Drive test information supporting the claim that Cellco could not achieve adequate coverage from the towers located on Talcott Mountain; and
- A photograph of the balloon float at the site on the day of the hearing.

Enclosed are an original and twenty (20) copies of the requested drive test and supporting propagation maps. Unfortunately, due to weather conditions, Cellco was unable to obtain a photograph of the balloon float. As a consequence, Cellco is unable to provide the other requested exhibit.

Subsequent to the close of the hearing, in response to a request from Susan Edelson, the Council also required Cellco to submit written evidence supporting its sworn testimony regarding lost calls and ineffective attempts by June 15, 2009. Enclosed are an original and twenty (20) copies of the written evidence requested. In the course of developing the written materials, Cellco discovered that its original testimony was incorrect. However, the enclosed written evidence provides the



Law Offices

BOSTON

HARTFORD

NEW LONDON

STAMFORD

WHITE PLAINS

NEW YORK CITY

SARASOTA

www.rc.com

ROBINSON & COLE_{LLP}

S. Derek Phelps
June 15, 2009
Page 2

correct information. As Cellco has previously testified, in determining the need for a particular site, lost calls and ineffective attempts are not the only criteria that Cellco considers. In particular, Cellco relies upon baseline drive test data, coverage plots, capacity and interference data as well as lost call and ineffective attempt data. Based on this collective information, Cellco has determined that it has a need for the Farmington N2 Facility.

Please feel free to contact me if you have any questions or require additional information. Thank you.

Sincerely,



Joey Lee Miranda

Copy to: Parties and Intervenors of Record
Sandy M. Carter



Plot: Channel CH_10

File: AvonIII81708mS1

Date: August 17, 2005

Avon III @ 120' just ch 10

Client: Verizon Wireless West

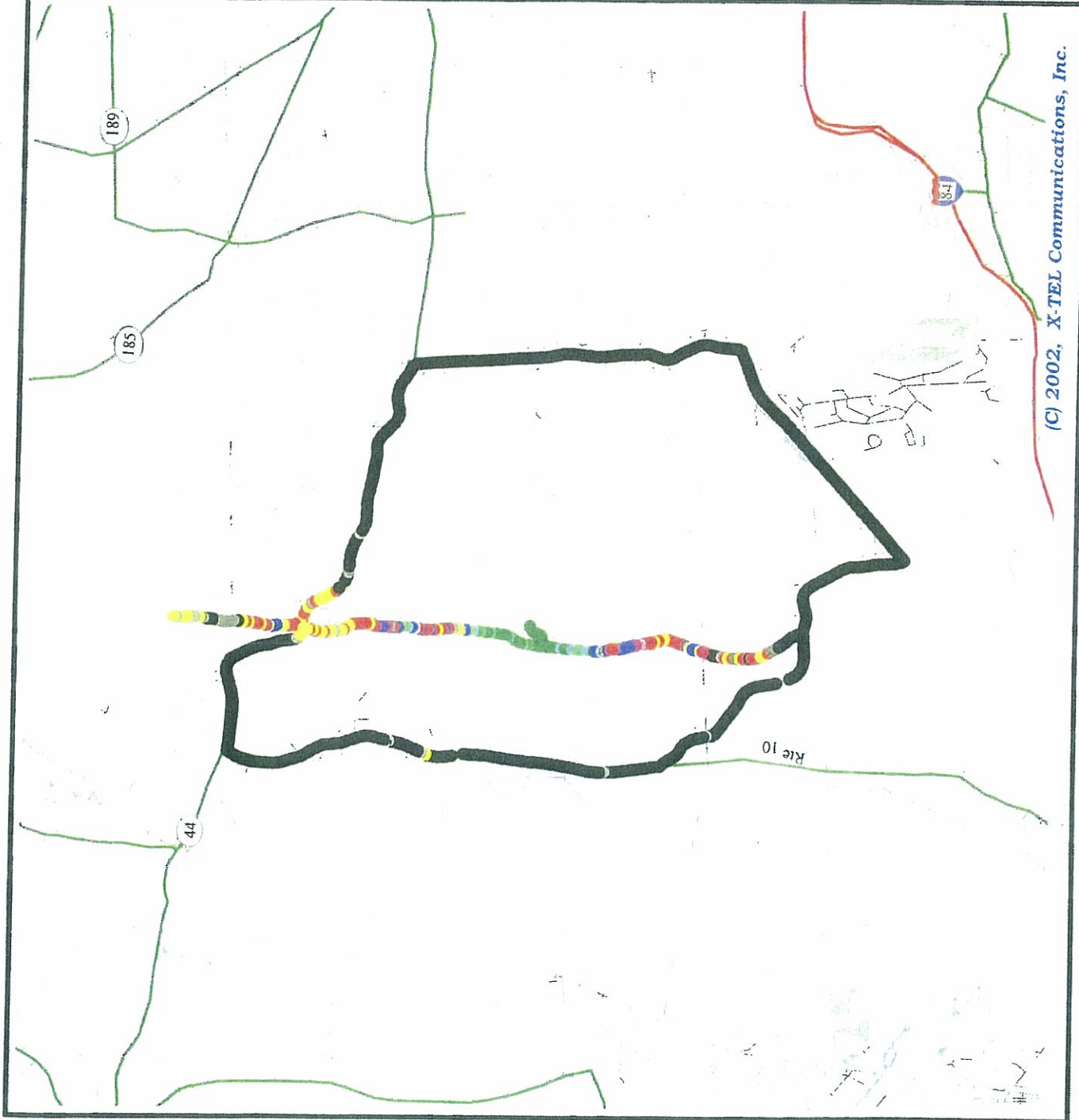
X-TEL HCU System

Single Channel
by CH_10

- -60 to -1 (36)
- -65 to -60 (13)
- -70 to -65 (10)
- -75 to -70 (23)
- -80 to -75 (32)
- -85 to -80 (36)
- -90 to -85 (49)
- -95 to -90 (26)
- -140 to -95 (475)

X-TEL Communications, Inc.
1919 S. Highland Ave. Ste 255-D
Lombard, IL 60148
(630) 705-9090

(C) 2002, X-TEL Communications, Inc.



Plot: Single Channel

File: AvonH81605mS2

Date: August 17, 2005

Avon III @ 120' just 1468

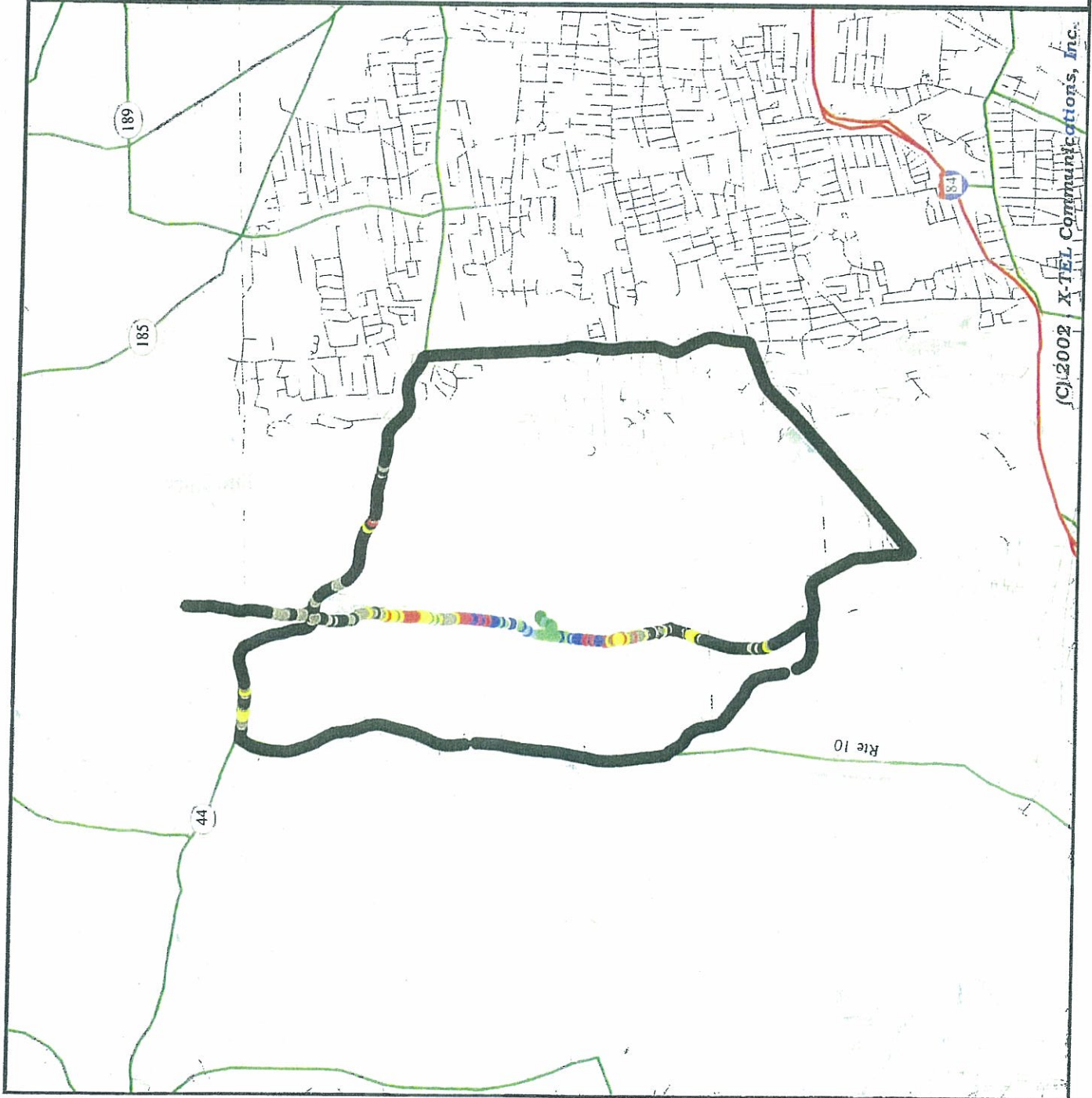
Client: Verizon Wireless West

X-TEL HCU System

Single Channel

by CH_1468

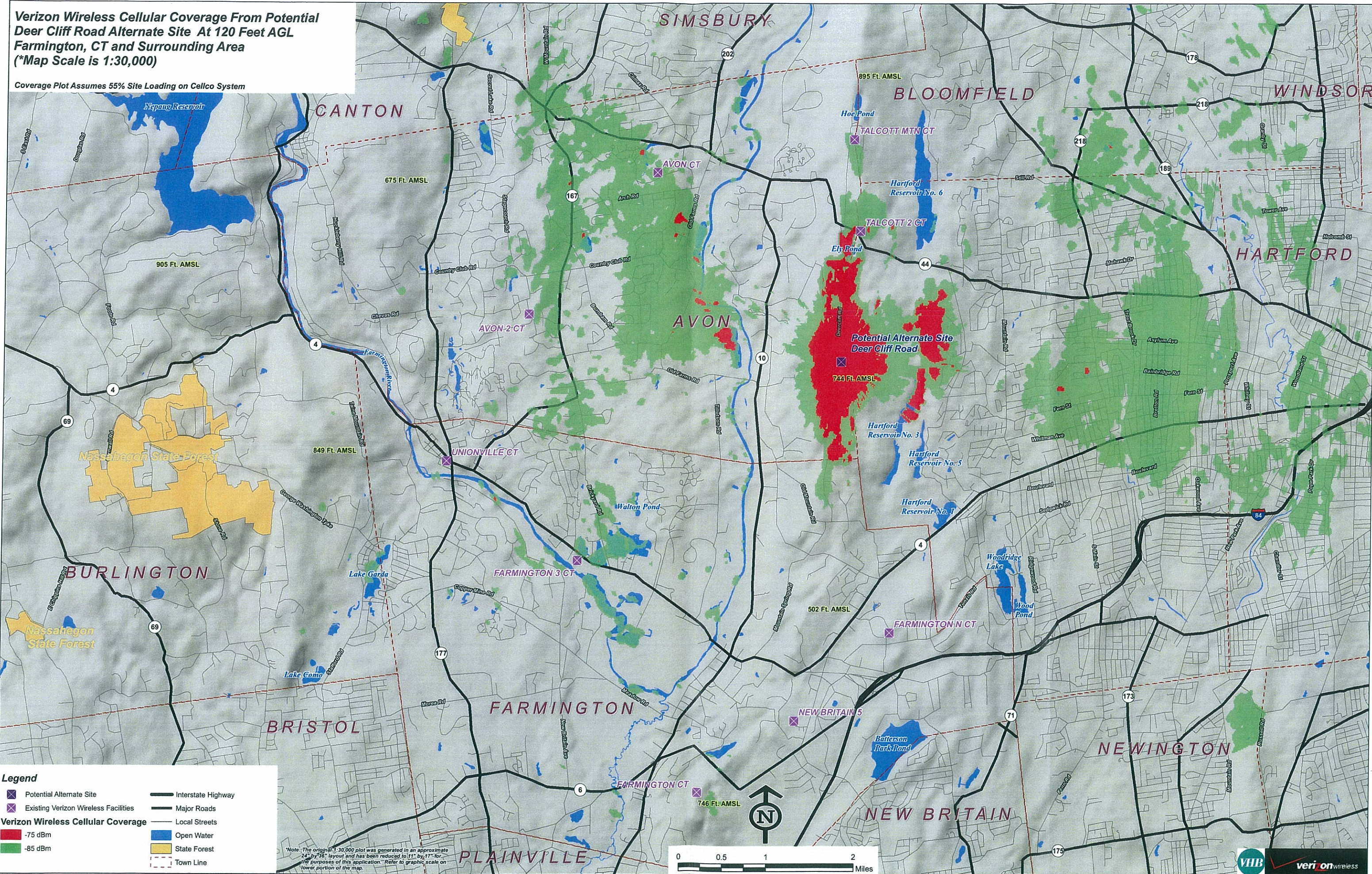
- -60 to -1 (8)
- -65 to -60 (23)
- -70 to -65 (11)
- -75 to -70 (19)
- -80 to -75 (11)
- -85 to -80 (17)
- -90 to -85 (37)
- -95 to -90 (76)
- -140 to -95 (667)



X-TEL Communications, Inc.
1919 S. Highland Ave. Ste 255-D
Lombard, IL 60148
(630) 705-9090

**Verizon Wireless Cellular Coverage From Potential Deer Cliff Road Alternate Site At 120 Feet AGL
Farmington, CT and Surrounding Area
(*Map Scale is 1:30,000)**

Coverage Plot Assumes 55% Site Loading on Cellco System



Legend

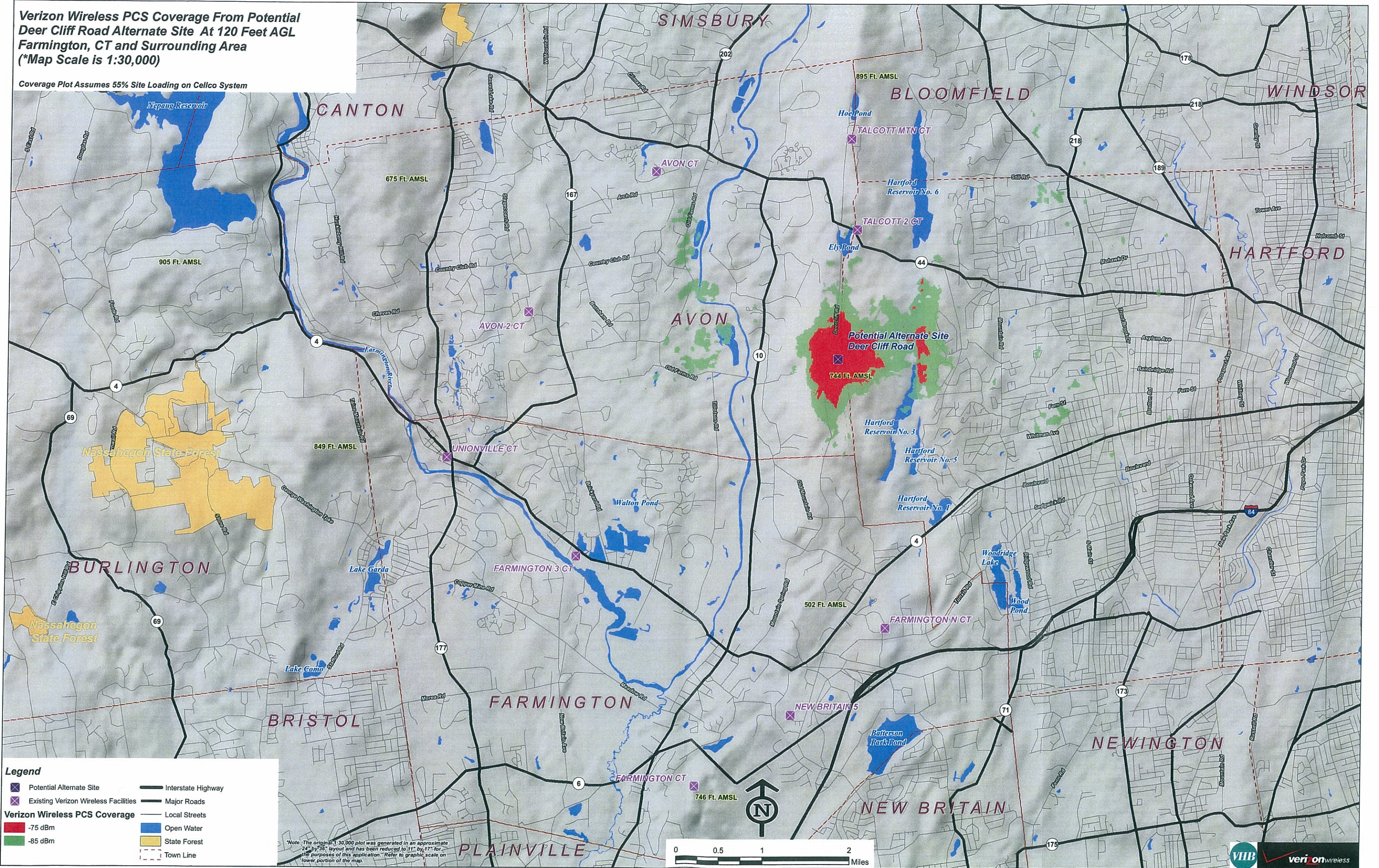
- Potential Alternate Site
- Existing Verizon Wireless Facilities
- Verizon Wireless Cellular Coverage**
- 75 dBm
- 85 dBm
- Interstate Highway
- Major Roads
- Local Streets
- Open Water
- State Forest
- Town Line

*Note: The original 1:30,000 plot was generated in an approximate 24" by 36" layout and has been reduced to 11" by 17" for the purposes of this application. Refer to graphic scale on lower portion of the map.



**Verizon Wireless PCS Coverage From Potential Deer Cliff Road Alternate Site At 120 Feet AGL
Farmington, CT and Surrounding Area
(*Map Scale is 1:30,000)**

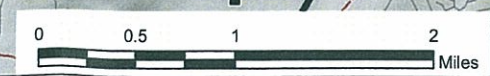
Coverage Plot Assumes 55% Site Loading on Cellco System



Legend

- Potential Alternate Site
- Existing Verizon Wireless Facilities
- 75 dBm
- 85 dBm
- Interstate Highway
- Major Roads
- Local Streets
- Open Water
- State Forest
- Town Line

*Note: The original 1:30,000 plot was generated in an approximate 24" by 36" layout and has been reduced to 11" by 17" for the purposes of this application. Refer to graphic scale on lower portion of the map.



Cellgroup	SysID	ECP	CDMA IA Rate	CDMA LC Rate	CDMA Atts	CDMA IA	CDMA LC	CDMA CP
Windsor_2	119	8	0.96%	0.81%	108630	1048	878	107942