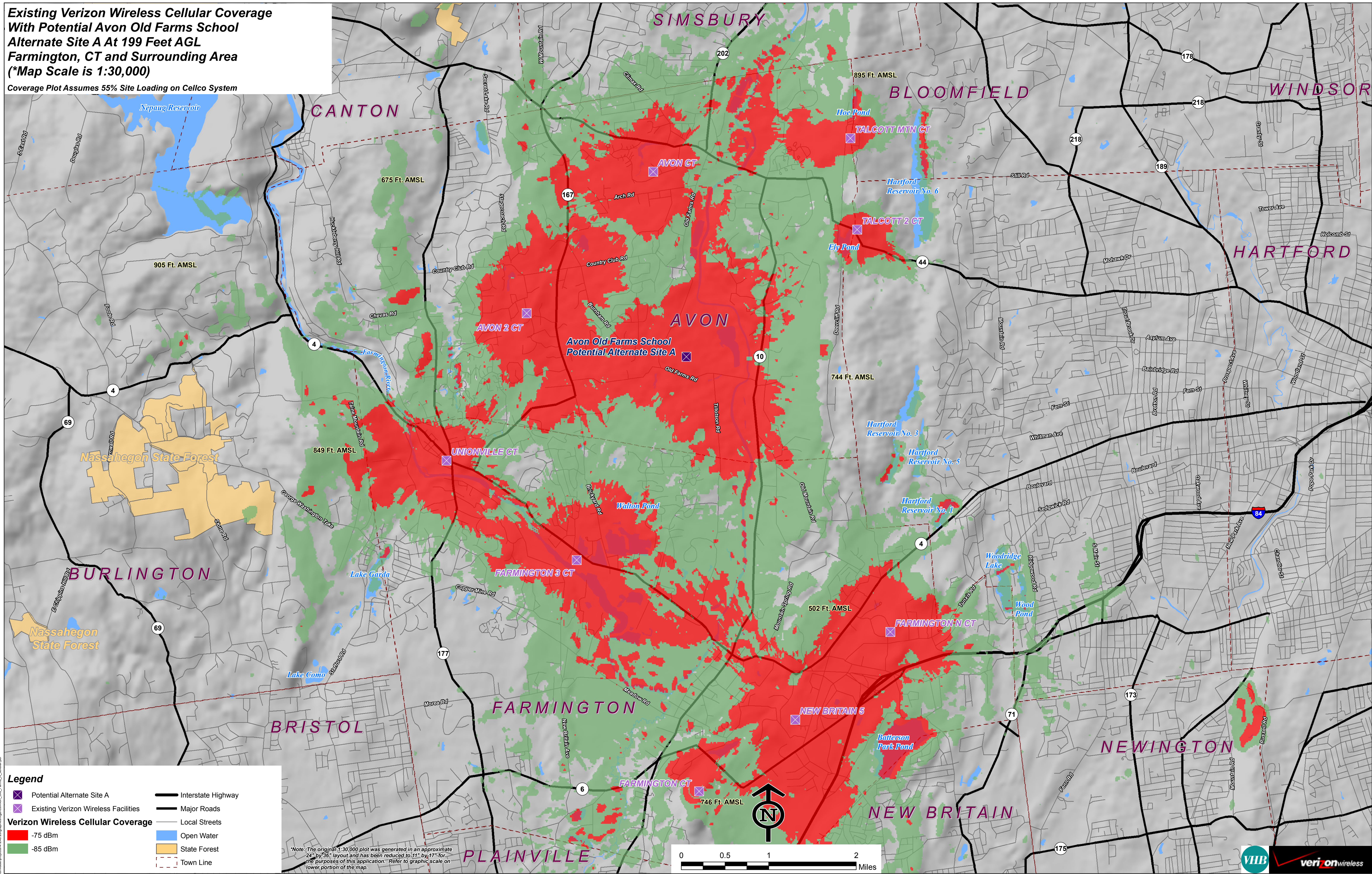


**Existing Verizon Wireless Cellular Coverage
With Potential Avon Old Farms School
Alternate Site A At 199 Feet AGL
Farmington, CT and Surrounding Area
(*Map Scale is 1:30,000)**

Coverage Plot Assumes 55% Site Loading on Cellco System



Legend

- Potential Alternate Site A (Purple X)
- Existing Verizon Wireless Facilities (Purple X)
- Verizon Wireless Cellular Coverage
 - 75 dBm (Red)
 - 85 dBm (Green)
- Interstate Highway (Thick black line)
- Major Roads (Thin black line)
- Local Streets (Thin grey line)
- Open Water (Blue)
- State Forest (Yellow)
- Town Line (Dashed red line)

*Note: The original 1:30,000 plot was generated in an approximate 24" by 36" layout and has been reduced to 11" by 17" for the purposes of this application. Refer to graphic scale on lower portion of the map.

