



**Western Massachusetts  
Electric**

The Northeast Utilities System

NEW ENGLAND  
**EAST**  **WEST  
SOLUTION**

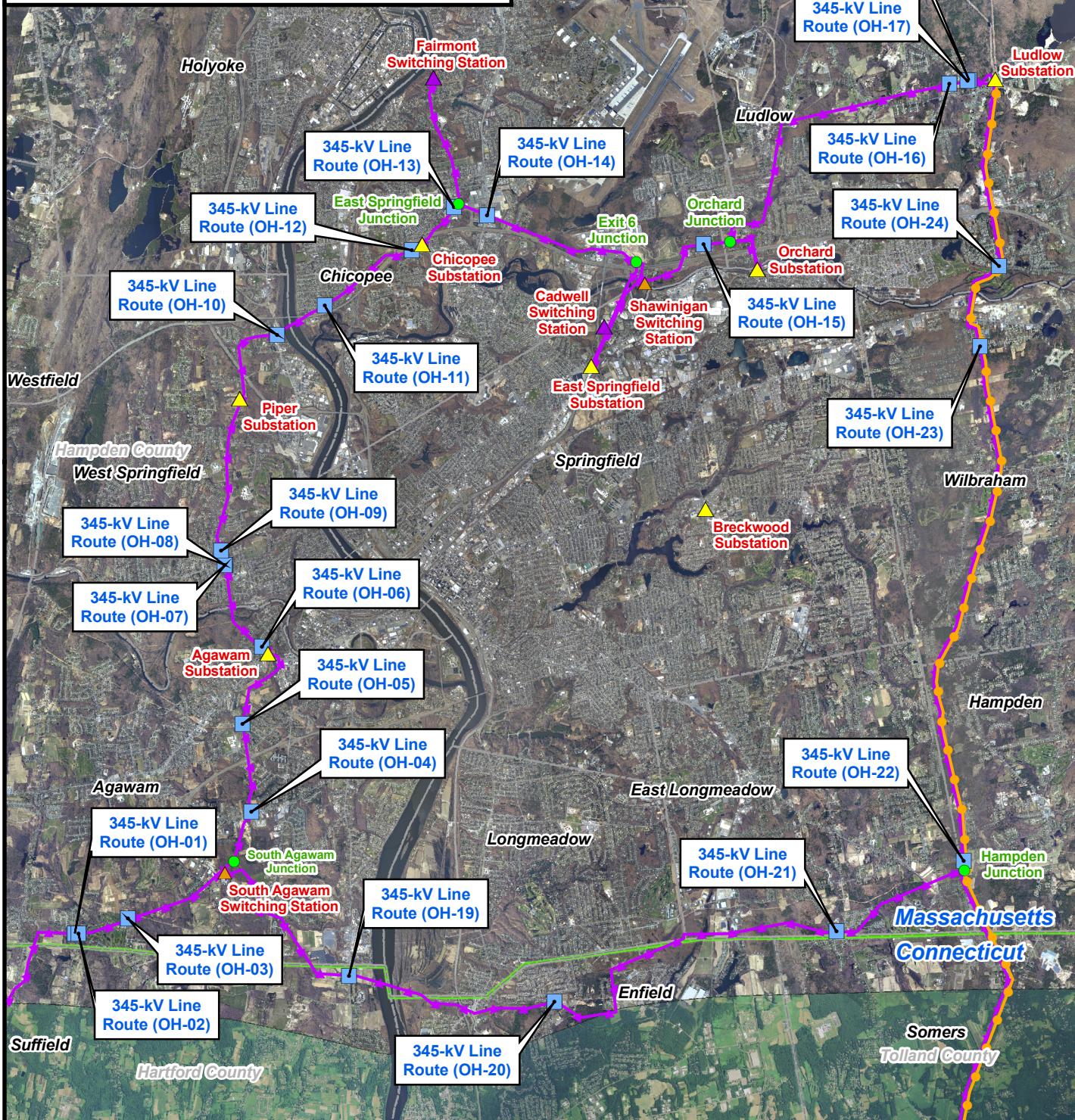
**EX. 4.1: Photographs along the Preferred Northern Route and Noticed-  
Alternative Southern Route-REVISED**



---

Massachusetts Energy Facilities Siting Board Petition for  
The Greater Springfield Reliability Project

- Legend**
- ▲ Substation
  - ▲ Switching Station (Proposed)
  - ▲ Switching Station
  - Junction
  - Existing 345-kV
  - Existing 115-kV
  - State Line
  - # Photo ID Number



\\com-fs-006\data\Data2\Projects\NUSNETR\_Projects\45063\_Springfield\_345kV\Environmental\GIS\ARC\ArcMXD\Network\GreaterSpringfield\Figures\IMA\_EFSBPOST\_APPLICATION\GSRP\_MA\_EFSB\_Photo\_Points\_MA\_345kV\_2008.11.18.mxd

0 5,000 10,000 20,000 Feet

Scale is at 1:120,000 when printed at 8.5' x 11'.  
 Source: Mass GIS Aerial Photography (2005) and USDA NAIP Aerial Photography (2008).

**Western Massachusetts Electric**  
 The Northeast Utilities System

**Burns & McDonnell**  
 SINCE 1898

Photo Location Map  
 Greater Springfield Reliability Project  
 345-kV Overhead Line Routes



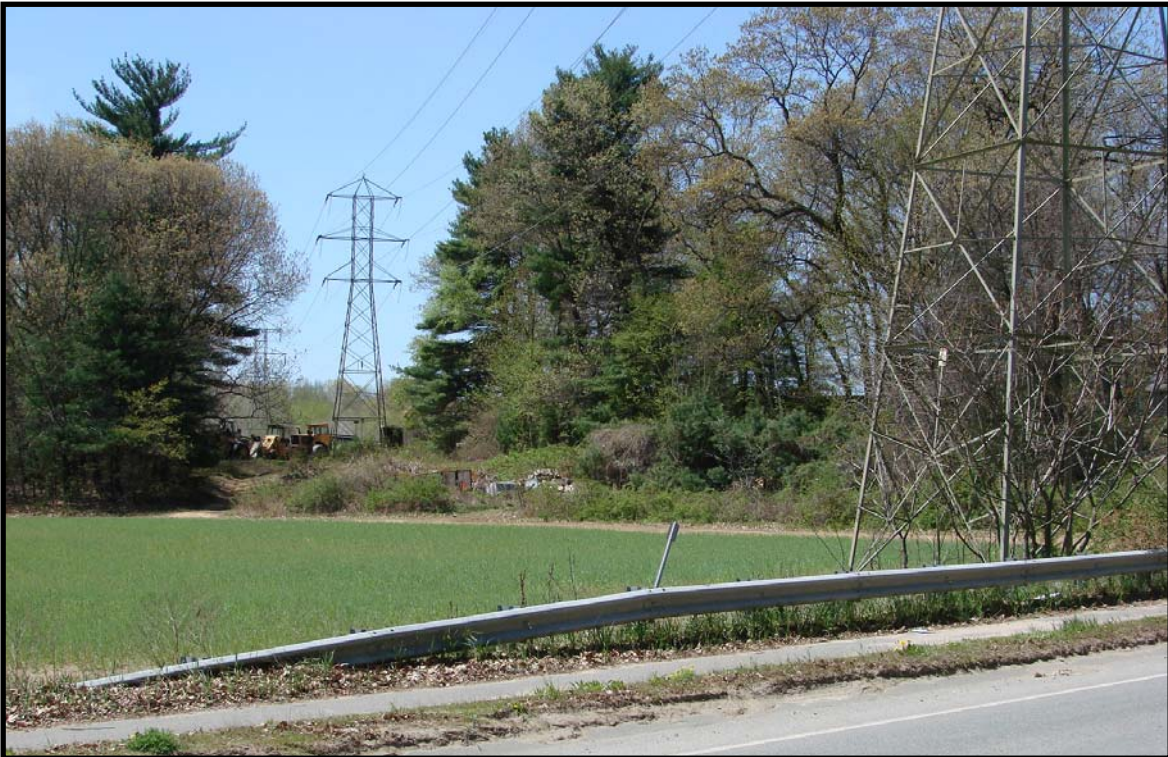
**Photo 345-kV Line Route OH-01:** View west from Oakridge Drive in the Town of Agawam, MA.



**Photo 345-kV Line Route OH-02:** View east from Barry and Pine Streets in the Town of Agawam, MA.



**Photo 345-kV Line Route OH-03:** View west from South Westfield Street at Oak Ridge Golf Course in the Town of Agawam, MA.



**Photo 345-kV Line Route OH-04:** View southwest from Silver Street, south of Silver Substation in the Town of Agawam, MA.



**Photo 345-kV Line Route OH-05:** View north from Lancaster Drive in the Town of Agawam, MA.



**Photo 345-kV Line Route OH-06:** View northwest from Maple Street, north of Agawam Substation, in the Town of Agawam, MA.



**Photo 345-kV Line Route OH-07:** View north from Kings Highway in the Town of West Springfield, MA.



**Photo 345-kV Line Route OH-08:** View south from Kings Highway in the Town of West Springfield, MA. A fire station is located to the right in this photo.



**Photo 345-kV Line Route OH-09:** View north from Cora Street in the Town of West Springfield, MA.



**Photo 345-kV Line Route OH-10:** View east from Riverdale Street in the Town of West Springfield, MA. This is the crossing location of the Connecticut River.



**Photo 345-kV Line Route OH-11:** View northeast from Trenton Street and Whitin Avenue in the City of Chicopee, MA.



**Photo 345-kV Line Route OH-12:** View northeast from Ponds Street toward Chicopee Substation in the City of Chicopee, MA.





**Photo 345-kV Line Route OH-13:** View northeast on unnamed road showing East Springfield Junction in the City of Chicopee, MA.



**Photo 345-kV Line Route OH-14:** View east from Memorial Drive in the City of Chicopee, MA.



**Photo 345-kV Line Route OH-15:** View east from Dove Drive and Wren Drive in the City of Chicopee, MA.



**Photo 345-kV Line Route OH-16:** View west from Booth Street in the Town of Ludlow, MA.



**Photo 345-kV Line Route OH-17:** View west from Lyons Street in the Town of Ludlow, MA.



**Photo 345-kV Line Route OH-18:** View east from Lyons Street toward Ludlow Substation in the Town of Ludlow, MA.



**Photo 345-kV Line Route OH-19:** View east from Mapleton Avenue (State Route 159) toward the crossing of the Connecticut River in the Town of Suffield, CT.



**Photo 345-kV Line Route OH-20:** View west near Alban Road in the Town of Enfield, CT.



**Photo 345-kV Line Route OH-21:** View west from Prospect Street in the Town of East Longmeadow, MA.



**Photo 345-kV Line Route OH-22:** View north from Mill north of Hampden Junction in the Town of Hampden, MA.



**Photo 345-kV Line Route OH-23:** View south from Manchonis Road in the Town of Wilbraham, MA.



**Photo 345-kV Line Route OH-24:** View southwest from Chapin Street in the Town of Ludlow, MA.