

January 10, 2013

Robert Stein  
Chairman  
Connecticut Siting Council  
10 Franklin Square  
New Britain, CT 06051

**Re: Docket No. 370 – The Connecticut Light and Power Company Application for a Certificate of Environmental Compatibility and Public Need for the Greater Springfield Reliability Project – Request for Approval of Partial Transfer of Rights and Obligations**

Dear Chairman Stein,

In accordance with §16-50k(b) of the Connecticut General Statutes, The Connecticut Light and Power Company ("CL&P") and The United Illuminating Company ("UI") (together, the "Joint Petitioners") submit this joint request for a partial transfer to UI of CL&P's rights and obligations under the Certificate of Environmental Compatibility and Public Need ("Certificate") issued by the Connecticut Siting Council ("Council") in Docket No. 370 on March 24, 2010.<sup>1</sup>

**I. Background**

On July 14, 2010, the Joint Petitioners entered into an agreement entitled "Agreement Re: NEEWS Projects" ("Agreement"). Subject to a number of contingencies specified in the Agreement, CL&P is to sell, and UI is to purchase, certain electric transmission facilities and related assets (the "Subject Assets") comprising part of the Connecticut portion of projects known as the New England East-West Solution Projects. One electronic copy (on compact disc) and one paper copy of the Agreement are enclosed.<sup>2</sup> Portions of the Greater Springfield Reliability Project ("GSRP") comprise part of the Subject Assets and are the second set of Subject Assets scheduled to be transferred from CL&P to UI.<sup>3</sup> (Such assets are hereinafter referred to as the "UI GSRP Assets.") Asset transfers are scheduled to occur immediately prior to commercial operation thereof. The UI GSRP Assets include tangible and intangible personal

---

<sup>1</sup> Conn. Gen. Stat. §16-50k(b) states as follows: "A certificate may be transferred, subject to the approval of the council, to a person who agrees to comply with the terms, limitations and conditions contained therein. The council shall not approve any such transfer if it finds that such transfer was contemplated at or prior to the time the certificate was issued and such fact was not adequately disclosed during the certification proceeding."

<sup>2</sup> Two compact discs, each containing one copy of the Agreement, together with four paper copies of the Agreement, were filed with the Council on May 30, 2012 in Docket 424. Additionally, one electronic copy (on compact disc) and one paper copy of the Agreement were filed with the Council on July 12, 2012 in Docket 370A-MR.

<sup>3</sup> The first set of Subject Assets transferred from CL&P to UI is a portion of the Manchester to Meekville Junction Project, as modified by the Council (as modified, "MMP-V"). MMP-V assets were transferred by CL&P to UI on September 26, 2012. CL&P notified the Council of this transfer on October 24, 2012. On July 26, 2012, the Council approved the partial transfer of the Certificate of Environmental Compatibility and Public Need for MMP-V from CL&P to UI in connection with the transfer of MMP-V assets from CL&P to UI.

Robert Stein  
Chairman  
January 10, 2013  
Page 2 of 3

property. The tangible personal property consists of wires, poles, conductors, fixtures and ancillary equipment located in Bloomfield, Granby and Suffield, Connecticut, as more particularly described in Attachment A hereto (the "UI GSRP Transmission Facilities"). The approximate location of the UI GSRP Transmission Facilities is depicted in Attachment B hereto, which is a map of the subject area. The UI GSRP Transmission Facilities do not include any ownership interests in land or land rights, and consist solely of tangible personal property. None of the UI GSRP Transmission Facilities cross or run along public highways.

In accordance with the Agreement, upon the transfer of the UI GSRP Assets by CL&P to UI, UI shall assume full responsibility for all rights and obligations associated with and/or arising out of the UI GSRP Assets, including all obligations inherent in the ownership, operation and maintenance of the UI GSRP Transmission Facilities. UI shall bear all costs (including ISO-NE and CONVEX charges), obligations and risks associated with the UI GSRP Assets. UI also shall have the obligations of a transmission owner for upgrades and/or other capital improvements, including associated costs, with respect to the UI GSRP Transmission Facilities.

Although UI will own the UI GSRP Transmission Facilities, these facilities will be operated and maintained by CL&P as though they were part of the CL&P system under an Operation and Maintenance Agreement ("O&M Agreement") with UI. The O&M Agreement provides that CL&P will exclusively operate and maintain the UI GSRP Transmission Facilities, and UI will pay CL&P an operations and maintenance charge.<sup>4</sup> Operational control over the UI GSRP Transmission Facilities will be transferred to ISO-NE, and UI will be subject to the Transmission Operating Agreement between ISO-NE and participating New England transmission owners. The transfer of the UI GSRP Transmission Facilities will not affect GSRP's operation or maintenance, nor will it affect CL&P's ability to operate and maintain the GSRP in a reliable manner.

## **II. Request for Approval of Partial Transfer**

The transfer of UI GSRP Assets pursuant to the Agreement entails a partial transfer to UI of CL&P's rights and obligations under the Certificate pursuant to Conn. Gen. Stat. §16-50k(b). Therefore, the Joint Petitioners request the Council to approve the transfer of a portion of CL&P's rights and obligations under the Certificate as necessary for UI to own, operate and

---

<sup>4</sup> The O&M Agreement will have an initial term extending to December 31, 2052, followed by a potential initial renewal term of 20 years and further potential renewal increments of 10 years each. In the event the O&M Agreement is not in place for any reason, the Agreement requires UI to maintain the UI GSRP Transmission Facilities in compliance with good utility practices and otherwise in a manner that does not adversely affect CL&P's facilities that interconnect with the UI GSRP Transmission Facilities. The Joint Petitioners also have entered into a Step-In Agreement that, subject to acceptance by the Federal Energy Regulatory Commission of the rates, terms and conditions of the Step-In Agreement, allows CL&P to manage and operate the UI GSRP Transmission Facilities if UI fails to do so as required.

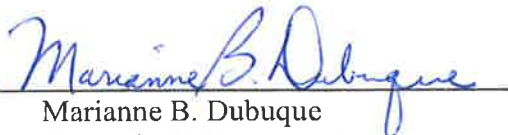
Robert Stein  
Chairman  
January 10, 2013  
Page 3 of 3

maintain the UI GSRP Transmission Facilities, subject to the terms and conditions of the Council's Decision and Order issued on March 24, 2010, and the terms and conditions of the Agreement. The Council's approval should specify that the partial Certificate transfer shall become effective as of the date that ownership of the UI GSRP Assets is transferred to UI, and that, in the event that such transfer of ownership of the UI GSRP Assets does not occur, CL&P shall retain all of its rights and obligations under the Certificate.

As required by Conn. Gen. Stat. § 16-50k(b), the Joint Petitioners affirm that no transfer of the Certificate was contemplated during the applicable certification proceedings.<sup>5</sup> As also required by §16-50k(b), UI affirms that it shall comply with the terms, limitations and conditions contained in the Certificate, as described above.


The Agreement requires the closing of the purchase and sale of UI GSRP Assets to become effective on the business day immediately prior to commercial operation of the UI GSRP Transmission Facilities. Currently, commercial operation of the UI GSRP Transmission Facilities is anticipated on or about February 25, 2013, with the closing to occur on or about February 22, 2013. In order to meet those dates, the Joint Petitioners therefore request the Council's approval of the partial transfer of the Certificate as soon as possible but, in any event, on or before February 7, 2013.

THE CONNECTICUT LIGHT  
AND POWER COMPANY

By:   
Marianne B. Dubuque  
Carmody & Torrance LLP  
50 Leavenworth Street  
Waterbury, CT 06721-1110  
(203) 578-4218

Its Attorney

THE UNITED ILLUMINATING  
COMPANY

By:   
Bruce L. McDermott  
UIL Holdings Corporation  
157 Church Street  
New Haven, CT 06506-0901  
(203) 499-2422

<sup>5</sup> Regarding compliance with Conn. Gen. Stat. §16-50k(b), CL&P and UI were negotiating an agreement by which UI would acquire an interest in the NEEWS projects during the pendency of the proceedings in Docket 370. Whether the agreement would be concluded and whether the form it would take would involve a transfer of physical assets to UI and therefore require a partial transfer of a Council certificate were still unsettled questions when the GSRP record closed on January 5, 2010 and when the Council, on March 24, 2010, issued the Certificate. Accordingly, no transfer of a certificate was "contemplated" at that time. By the time the Agreement was finalized, including the identification of certain GSRP facilities as assets to be transferred to UI, the record in Docket No. 370 had closed and the Certificate had been issued. Accordingly, the contemplated partial transfer of the Certificate could not have been disclosed "during the certification proceeding."

**Attachment A to Joint Letter Dated January 10, 2013  
From CL&P and UI to The Connecticut Siting Council**

**(See the attached document for a description of  
the UI GSRP Transmission Facilities.)**

Asset	Description	Structure Number
Steel Pole, Signs, Anchor Bolts, and Foundation	115 ft 3 Pole Deadend Steel Structure and affiliated equipment	17004
Overhead Conductor	1590 ACSS "FALCON" CABLE, BARE	17004
Optical Ground Wire	OPGW (Shield Wire Only)	17004
Overhead Ground Wire	19#10 ALUMOWELD CABLE	17004
Grounding System	Sectionalized Ground Rods & Ground Ring Assembly	17004
Insulator Assembly Unit	345-kV Deadend Jumper Assembly & OPGW Suspension Assembly	17004
Steel Pole, Signs, Anchor Bolts, and Foundation	120 ft H Frame Steel Poles and affiliated equipment	17005
Overhead Conductor	1590 ACSS "FALCON" CABLE, BARE	17005
Optical Ground Wire	OPGW (Shield Wire Only)	17005
Overhead Ground Wire	19#10 ALUMOWELD CABLE	17005
Grounding System	Sectionalized Ground Rods & Ground Ring Assembly	17005
Insulator Assembly Unit	345-kV Deadend Jumper Assembly & OPGW Suspension Assembly	17005
Steel Pole, Signs, Anchor Bolts, and Foundation	90 ft H Frame Steel Poles and affiliated equipment	17010
Overhead Conductor	1590 ACSS "FALCON" CABLE, BARE	17010
Optical Ground Wire	OPGW (Shield Wire Only)	17010
Overhead Ground Wire	19#10 ALUMOWELD CABLE	17010
Grounding System	Sectionalized Ground Rods & Ground Ring Assembly	17010
Insulator Assembly Unit	345-kV Deadend Jumper Assembly & OPGW Suspension Assembly	17010
Steel Pole, Signs, Anchor Bolts, and Foundation	85 ft H Frame Steel Poles and affiliated equipment	17011
Overhead Conductor	1590 ACSS "FALCON" CABLE, BARE	17011
Optical Ground Wire	OPGW (Shield Wire Only)	17011
Overhead Ground Wire	19#10 ALUMOWELD CABLE	17011
Grounding System	Sectionalized Ground Rods & Ground Ring Assembly	17011
Insulator Assembly Unit	345-kV Deadend Jumper Assembly & OPGW Suspension Assembly	17011
Steel Pole, Signs, Anchor Bolts, and Foundation	85 ft H Frame Steel Poles and affiliated equipment	17012
Overhead Conductor	1590 ACSS "FALCON" CABLE, BARE	17012
Optical Ground Wire	OPGW (Shield Wire Only)	17012
Overhead Ground Wire	19#10 ALUMOWELD CABLE	17012
Grounding System	Sectionalized Ground Rods & Ground Ring Assembly	17012
Insulator Assembly Unit	345-kV Deadend Jumper Assembly & OPGW Suspension Assembly	17012
Steel Pole, Signs, Anchor Bolts, and Foundation	90 ft H Frame Steel Poles and affiliated equipment	17013
Overhead Conductor	1590 ACSS "FALCON" CABLE, BARE	17013
Optical Ground Wire	OPGW (Shield Wire Only)	17013
Overhead Ground Wire	19#10 ALUMOWELD CABLE	17013
Grounding System	Sectionalized Ground Rods & Ground Ring Assembly	17013
Insulator Assembly Unit	345-kV Deadend Jumper Assembly & OPGW Suspension Assembly	17013
Steel Pole, Signs, Anchor Bolts, and Foundation	80 ft H Frame Steel Poles and affiliated equipment	17014
Overhead Conductor	1590 ACSS "FALCON" CABLE, BARE	17014
Optical Ground Wire	OPGW (Shield Wire Only)	17014
Overhead Ground Wire	19#10 ALUMOWELD CABLE	17014
Grounding System	Sectionalized Ground Rods & Ground Ring Assembly	17014
Insulator Assembly Unit	345-kV Deadend Jumper Assembly & OPGW Suspension Assembly	17014
Steel Pole, Signs, Anchor Bolts, and Foundation	80 ft H Frame Steel Poles and affiliated equipment	17015
Overhead Conductor	1590 ACSS "FALCON" CABLE, BARE	17015
Optical Ground Wire	OPGW (Shield Wire Only)	17015
Overhead Ground Wire	19#10 ALUMOWELD CABLE	17015
Grounding System	Sectionalized Ground Rods & Ground Ring Assembly	17015
Insulator Assembly Unit	345-kV Deadend Jumper Assembly & OPGW Suspension Assembly	17015



Asset	Description	Structure Number
Steel Pole, Signs, Anchor Bolts, and Foundation	90 ft H Frame Steel Poles and affiliated equipment	17016
Overhead Conductor	1590 ACSS "FALCON" CABLE, BARE	17016
Optical Ground Wire	OPGW (Shield Wire Only)	17016
Overhead Ground Wire	19#10 ALUMOWELD CABLE	17016
Grounding System	Sectionalized Ground Rods & Ground Ring Assembly	17016
Insulator Assembly Unit	345-kV Deadend Jumper Assembly & OPGW Suspension Assembly	17016
Steel Pole, Signs, Anchor Bolts, and Foundation	85 ft H Frame Steel Poles and affiliated equipment	17017
Overhead Conductor	1590 ACSS "FALCON" CABLE, BARE	17017
Optical Ground Wire	OPGW (Shield Wire Only)	17017
Overhead Ground Wire	19#10 ALUMOWELD CABLE	17017
Grounding System	Sectionalized Ground Rods & Ground Ring Assembly	17017
Insulator Assembly Unit	345-kV Deadend Jumper Assembly & OPGW Suspension Assembly	17017
Steel Pole, Signs, Anchor Bolts, and Foundation	95 ft H Frame Steel Poles and affiliated equipment	17018
Overhead Conductor	1590 ACSS "FALCON" CABLE, BARE	17018
Optical Ground Wire	OPGW (Shield Wire Only)	17018
Overhead Ground Wire	19#10 ALUMOWELD CABLE	17018
Grounding System	Sectionalized Ground Rods & Ground Ring Assembly	17018
Insulator Assembly Unit	345-kV Deadend Jumper Assembly & OPGW Suspension Assembly	17018
Steel Pole, Signs, Anchor Bolts, and Foundation	85 ft H Frame Steel Poles and affiliated equipment	17021
Overhead Conductor	1590 ACSS "FALCON" CABLE, BARE	17021
Optical Ground Wire	OPGW (Shield Wire Only)	17021
Overhead Ground Wire	19#10 ALUMOWELD CABLE	17021
Grounding System	Sectionalized Ground Rods & Ground Ring Assembly	17021
Insulator Assembly Unit	345-kV Deadend Jumper Assembly & OPGW Suspension Assembly	17021
Steel Pole, Signs, Anchor Bolts, and Foundation	115 ft H Frame Steel Poles and affiliated equipment	17022
Overhead Conductor	1590 ACSS "FALCON" CABLE, BARE	17022
Optical Ground Wire	OPGW (Shield Wire Only)	17022
Overhead Ground Wire	19#10 ALUMOWELD CABLE	17022
Grounding System	Sectionalized Ground Rods & Ground Ring Assembly	17022
Insulator Assembly Unit	345-kV Deadend Jumper Assembly & OPGW Suspension Assembly	17022
Steel Pole, Signs, Anchor Bolts, and Foundation	80 ft H Frame Steel Poles and affiliated equipment	17023
Overhead Conductor	1590 ACSS "FALCON" CABLE, BARE	17023
Optical Ground Wire	OPGW (Shield Wire Only)	17023
Overhead Ground Wire	19#10 ALUMOWELD CABLE	17023
Grounding System	Sectionalized Ground Rods & Ground Ring Assembly	17023
Insulator Assembly Unit	345-kV Deadend Jumper Assembly & OPGW Suspension Assembly	17023
Steel Pole, Signs, Anchor Bolts, and Foundation	85 ft H Frame Steel Poles and affiliated equipment	17024
Overhead Conductor	1590 ACSS "FALCON" CABLE, BARE	17024
Optical Ground Wire	OPGW (Shield Wire Only)	17024
Overhead Ground Wire	19#10 ALUMOWELD CABLE	17024
Grounding System	Sectionalized Ground Rods & Ground Ring Assembly	17024
Insulator Assembly Unit	345-kV Deadend Jumper Assembly & OPGW Suspension Assembly	17024
Steel Pole, Signs, Anchor Bolts, and Foundation	80 ft H Frame Steel Poles and affiliated equipment	17027
Overhead Conductor	1590 ACSS "FALCON" CABLE, BARE	17027
Optical Ground Wire	OPGW (Shield Wire Only)	17027
Overhead Ground Wire	19#10 ALUMOWELD CABLE	17027
Grounding System	Sectionalized Ground Rods & Ground Ring Assembly	17027
Insulator Assembly Unit	345-kV Deadend Jumper Assembly & OPGW Suspension Assembly	17027

Asset	Description	Structure Number
Steel Pole, Signs, Anchor Bolts, and Foundation	80 ft H Frame Steel Poles and affiliated equipment	17028
Overhead Conductor	1590 ACSS "FALCON" CABLE, BARE	17028
Optical Ground Wire	OPGW (Shield Wire Only)	17028
Overhead Ground Wire	19#10 ALUMOWELD CABLE	17028
Grounding System	Sectionalized Ground Rods & Ground Ring Assembly	17028
Insulator Assembly Unit	345-kV Deadend Jumper Assembly & OPGW Suspension Assembly	17028
Steel Pole, Signs, Anchor Bolts, and Foundation	100 ft H Frame Steel Poles and affiliated equipment	17029
Overhead Conductor	1590 ACSS "FALCON" CABLE, BARE	17029
Optical Ground Wire	OPGW (Shield Wire Only)	17029
Overhead Ground Wire	19#10 ALUMOWELD CABLE	17029
Grounding System	Sectionalized Ground Rods & Ground Ring Assembly	17029
Insulator Assembly Unit	345-kV Deadend Jumper Assembly & OPGW Suspension Assembly	17029
Steel Pole, Signs, Anchor Bolts, and Foundation	80 ft H Frame Steel Poles and affiliated equipment	17030
Overhead Conductor	1590 ACSS "FALCON" CABLE, BARE	17030
Optical Ground Wire	OPGW (Shield Wire Only)	17030
Overhead Ground Wire	19#10 ALUMOWELD CABLE	17030
Grounding System	Sectionalized Ground Rods & Ground Ring Assembly	17030
Insulator Assembly Unit	345-kV Deadend Jumper Assembly & OPGW Suspension Assembly	17030
Steel Pole, Signs, Anchor Bolts, and Foundation	80 ft H Frame Steel Poles and affiliated equipment	17031
Overhead Conductor	1590 ACSS "FALCON" CABLE, BARE	17031
Optical Ground Wire	OPGW (Shield Wire Only)	17031
Overhead Ground Wire	19#10 ALUMOWELD CABLE	17031
Grounding System	Sectionalized Ground Rods & Ground Ring Assembly	17031
Insulator Assembly Unit	345-kV Deadend Jumper Assembly & OPGW Suspension Assembly	17031
Steel Pole, Signs, Anchor Bolts, and Foundation	90 ft H Frame Steel Poles and affiliated equipment	17032
Overhead Conductor	1590 ACSS "FALCON" CABLE, BARE	17032
Optical Ground Wire	OPGW (Shield Wire Only)	17032
Overhead Ground Wire	19#10 ALUMOWELD CABLE	17032
Grounding System	Sectionalized Ground Rods & Ground Ring Assembly	17032
Insulator Assembly Unit	345-kV Deadend Jumper Assembly & OPGW Suspension Assembly	17032
Steel Pole, Signs, Anchor Bolts, and Foundation	95 ft H Frame Steel Poles and affiliated equipment	17033
Overhead Conductor	1590 ACSS "FALCON" CABLE, BARE	17033
Optical Ground Wire	OPGW (Shield Wire Only)	17033
Overhead Ground Wire	19#10 ALUMOWELD CABLE	17033
Grounding System	Sectionalized Ground Rods & Ground Ring Assembly	17033
Insulator Assembly Unit	345-kV Deadend Jumper Assembly & OPGW Suspension Assembly	17033
Steel Pole, Signs, Anchor Bolts, and Foundation	80 ft H Frame Steel Poles and affiliated equipment	17034
Overhead Conductor	1590 ACSS "FALCON" CABLE, BARE	17034
Optical Ground Wire	OPGW (Shield Wire Only)	17034
Overhead Ground Wire	19#10 ALUMOWELD CABLE	17034
Grounding System	Sectionalized Ground Rods & Ground Ring Assembly	17034
Insulator Assembly Unit	345-kV Deadend Jumper Assembly & OPGW Suspension Assembly	17034
Steel Pole, Signs, Anchor Bolts, and Foundation	90 ft H Frame Steel Poles and affiliated equipment	17035
Overhead Conductor	1590 ACSS "FALCON" CABLE, BARE	17035
Optical Ground Wire	OPGW (Shield Wire Only)	17035
Overhead Ground Wire	19#10 ALUMOWELD CABLE	17035
Grounding System	Sectionalized Ground Rods & Ground Ring Assembly	17035
Insulator Assembly Unit	345-kV Deadend Jumper Assembly & OPGW Suspension Assembly	17035

Asset	Description	Structure Number
Steel Pole, Signs, Anchor Bolts, and Foundation	95 ft H Frame Steel Poles and affiliated equipment	17036
Overhead Conductor	1590 ACSS "FALCON" CABLE, BARE	17036
Optical Ground Wire	OPGW (Shield Wire Only)	17036
Overhead Ground Wire	19#10 ALUMOWELD CABLE	17036
Grounding System	Sectionalized Ground Rods & Ground Ring Assembly	17036
Insulator Assembly Unit	345-kV Deadend Jumper Assembly & OPGW Suspension Assembly	17036
Steel Pole, Signs, Anchor Bolts, and Foundation	95 ft H Frame Steel Poles and affiliated equipment	17037
Overhead Conductor	1590 ACSS "FALCON" CABLE, BARE	17037
Optical Ground Wire	OPGW (Shield Wire Only)	17037
Overhead Ground Wire	19#10 ALUMOWELD CABLE	17037
Grounding System	Sectionalized Ground Rods & Ground Ring Assembly	17037
Insulator Assembly Unit	345-kV Deadend Jumper Assembly & OPGW Suspension Assembly	17037
Steel Pole, Signs, Anchor Bolts, and Foundation	90 ft H Frame Steel Poles and affiliated equipment	17038
Overhead Conductor	1590 ACSS "FALCON" CABLE, BARE	17038
Optical Ground Wire	OPGW (Shield Wire Only)	17038
Overhead Ground Wire	19#10 ALUMOWELD CABLE	17038
Grounding System	Sectionalized Ground Rods & Ground Ring Assembly	17038
Insulator Assembly Unit	345-kV Deadend Jumper Assembly & OPGW Suspension Assembly	17038
Steel Pole, Signs, Anchor Bolts, and Foundation	80 ft 3 Pole Deadend Steel Structure and affiliated equipment	17039
Overhead Conductor	1590 ACSS "FALCON" CABLE, BARE	17039
Optical Ground Wire	OPGW (Shield Wire Only)	17039
Overhead Ground Wire	19#10 ALUMOWELD CABLE	17039
Grounding System	Sectionalized Ground Rods & Ground Ring Assembly	17039
Insulator Assembly Unit	345-kV Deadend Jumper Assembly & OPGW Suspension Assembly	17039
Steel Pole, Signs, Anchor Bolts, and Foundation	85 ft 3 Pole Deadend Steel Structure and affiliated equipment	17080
Overhead Conductor	1590 ACSS "FALCON" CABLE, BARE	17080
Optical Ground Wire	OPGW (Shield Wire Only)	17080
Overhead Ground Wire	19#10 ALUMOWELD CABLE	17080
Grounding System	Sectionalized Ground Rods & Ground Ring Assembly	17080
Insulator Assembly Unit	345-kV Deadend Jumper Assembly & OPGW Suspension Assembly	17080
Steel Pole, Signs, Anchor Bolts, and Foundation	110 ft H Frame Steel Poles and affiliated equipment	17081
Overhead Conductor	1590 ACSS "FALCON" CABLE, BARE	17081
Optical Ground Wire	OPGW (Shield Wire Only)	17081
Overhead Ground Wire	19#10 ALUMOWELD CABLE	17081
Grounding System	Sectionalized Ground Rods & Ground Ring Assembly	17081
Insulator Assembly Unit	345-kV Deadend Jumper Assembly & OPGW Suspension Assembly	17081
Steel Pole, Signs, Anchor Bolts, and Foundation	85 ft H Frame Steel Poles and affiliated equipment	17082
Overhead Conductor	1590 ACSS "FALCON" CABLE, BARE	17082
Optical Ground Wire	OPGW (Shield Wire Only)	17082
Overhead Ground Wire	19#10 ALUMOWELD CABLE	17082
Grounding System	Sectionalized Ground Rods & Ground Ring Assembly	17082
Insulator Assembly Unit	345-kV Deadend Jumper Assembly & OPGW Suspension Assembly	17082



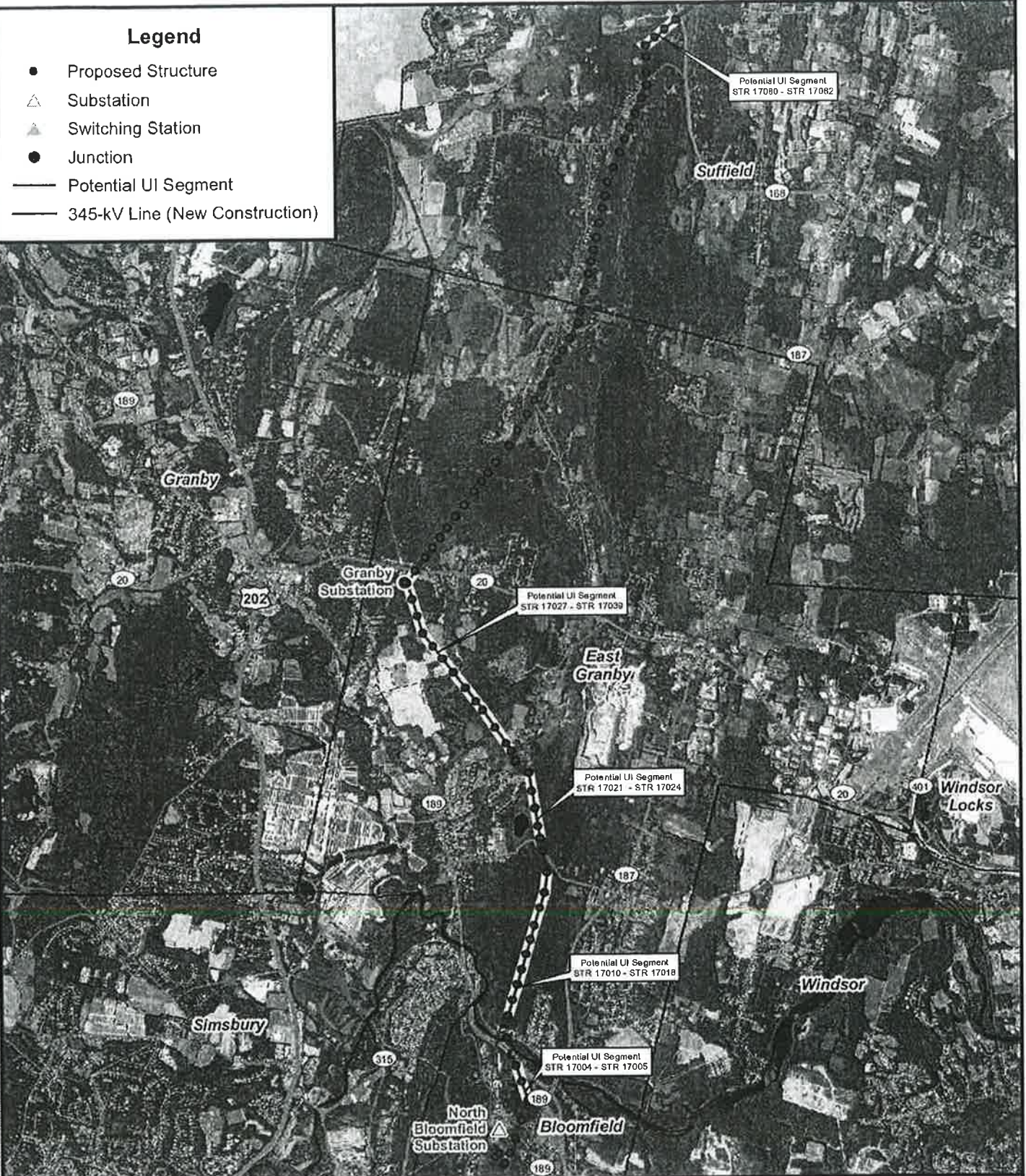
**Attachment B to Joint Letter Dated January 10, 2013  
From CL&P and UI to The Connecticut Siting Council**

**(See the attached map depicting the approximate location of  
the UI GSRP Transmission Facilities.)**

\\server\data\data\2\Projects\NUS\NETR\_Projects\45063\_Springfield\_345kV\Environmental\GIS\ARC\ArcXD\Network\GreaterSpringfield\Figures\CSC\_Application\Post\_Application\CSRP\_CT\_CSC\_PreferedRoutesCT\_Selected\_UI\_Segments\_2012.11.27.mxd

### Legend

- Proposed Structure
- △ Substation
- ▲ Switching Station
- Junction
- Potential UI Segment
- 345-kV Line (New Construction)



**Connecticut  
Light & Power**  
The Northeast Utilities System

Potential United Illuminated Segments  
Greater Springfield Reliability  
Project  
Connecticut Portion of the  
North Bloomfield to Agawam  
345-kV Line Route