



**Connecticut
Light & Power**

A Northeast Utilities Company

107 Selden Street, Berlin CT 06037

Northeast Utilities Service Company
P.O. Box 270
Hartford, CT 06141-0270
(860) 665-5000

September 25, 2013

Robert Stein, Chairman
Connecticut Siting Council
10 Franklin Square
New Britain, CT 06051

RECEIVED
SEP 30 2013

**CONNECTICUT
SITING COUNCIL**

**Re: Docket 370
Development and Management Plan Change – North Bloomfield Substation
Greater Springfield Reliability Project**

Dear Mr. Stein:

The Connecticut Siting Council (“Council”) approved The Connecticut Light and Power Company’s (“CL&P”) Development and Management (“D&M”) Plan for the North Bloomfield Substation via a letter sent to me on October 27, 2010. A number of minor changes have since been made to the D&M Plan Exhibits, and CL&P proposes another change in this letter for the Council’s approval.

CL&P proposes to install a sound barrier wall on the south side of the three new 345- to 115-kV autotransformers, as shown on the enclosed revision to Exhibit 3. (An original and 15 copies of Exhibit 3 are enclosed.) Sound absorbing panels in a structural steel support frame will be cantilevered off of the ends of the three existing concrete firewalls adjacent to these autotransformers. Because there is no firewall on the east side of the easterly autotransformer, two concrete foundations will be installed for supporting and bracing the east end of the sound wall. The sound wall will be approximately 115 feet long, and its height above grade of 28 feet will match the height of the firewalls. The sound absorbing panels will be ANSI 70 Gray in color in a dull or matte finish to reduce glare.

Sound measurements made by CL&P’s consultants subsequent to energizing the new autotransformers demonstrated compliance with the State of Connecticut’s Noise Control Regulations. However, the levels were a little higher than projected and some were close to the limit, possibly due to sound reflections from the firewalls. Several residents to the southwest and west of the substation complained to CL&P representatives about the increased transformer noise, leading CL&P to propose this sound wall.

Construction of the sound wall is scheduled to begin in early December 2013 and be completed by the end of January. An outage of the new autotransformers for this construction has been arranged from January 2 through 29, 2014. The construction work will take place during the days and hours indicated in Section 6.0 of the approved D&M Plan.

Please contact me at 860-665-6774 with any questions you or Council members may have on this D&M Plan change.

Sincerely,

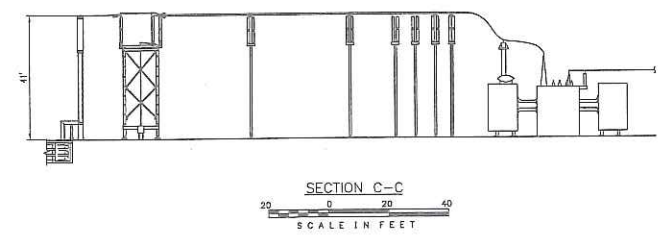
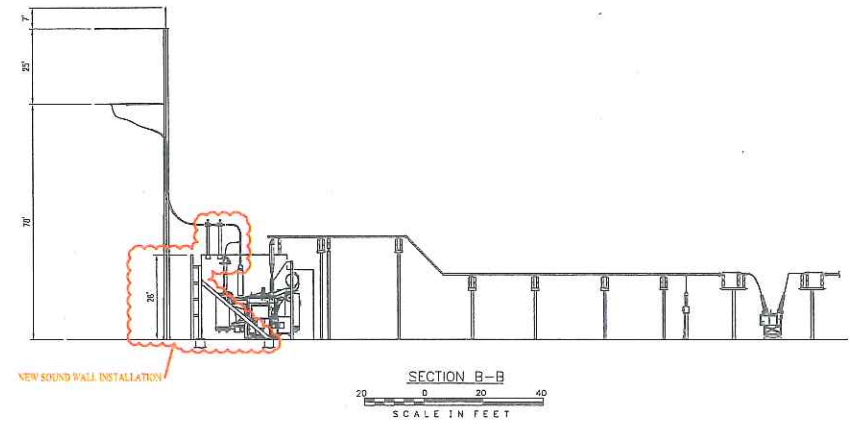
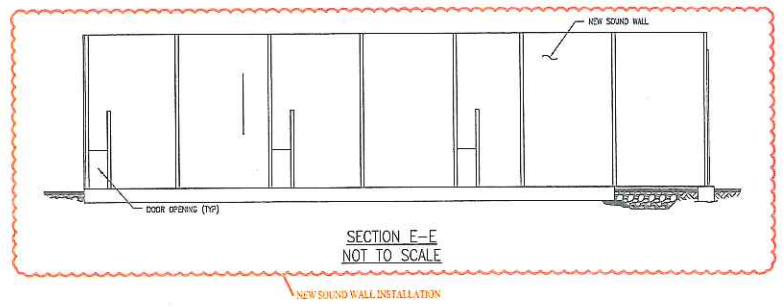
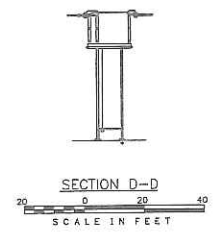
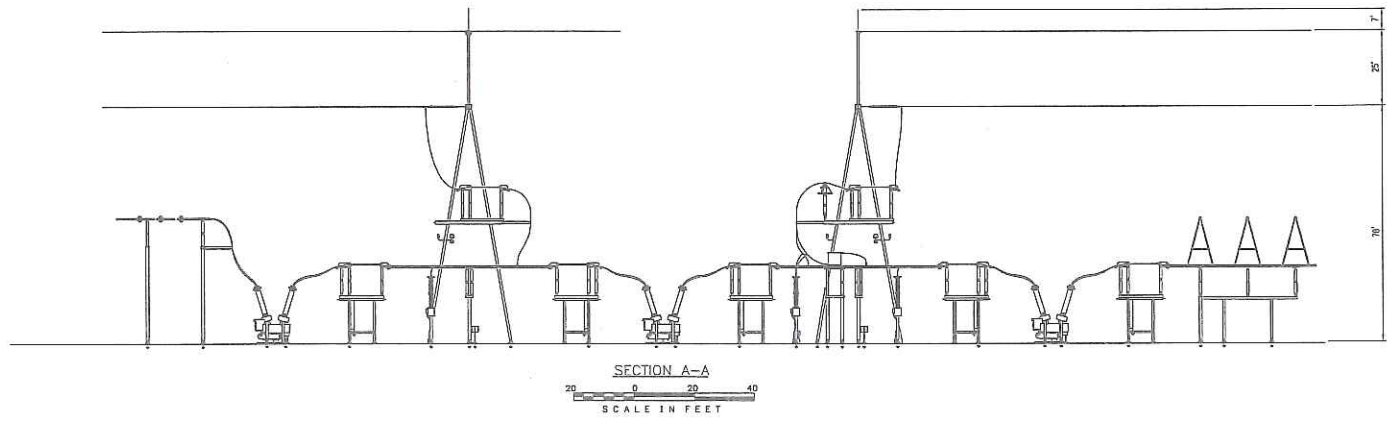
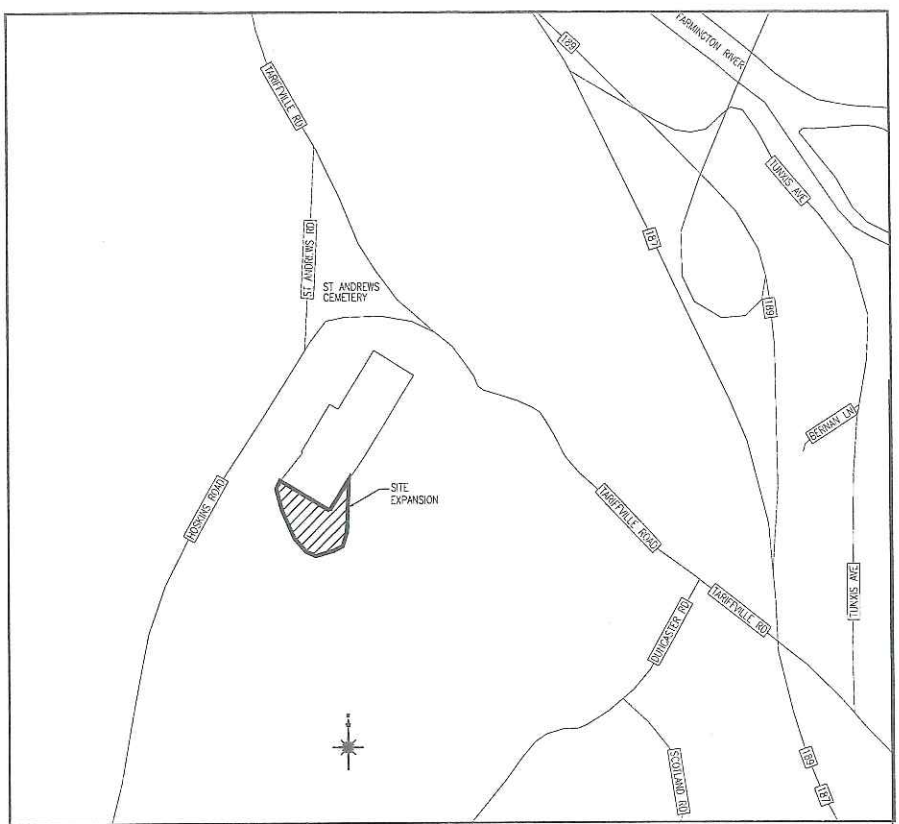
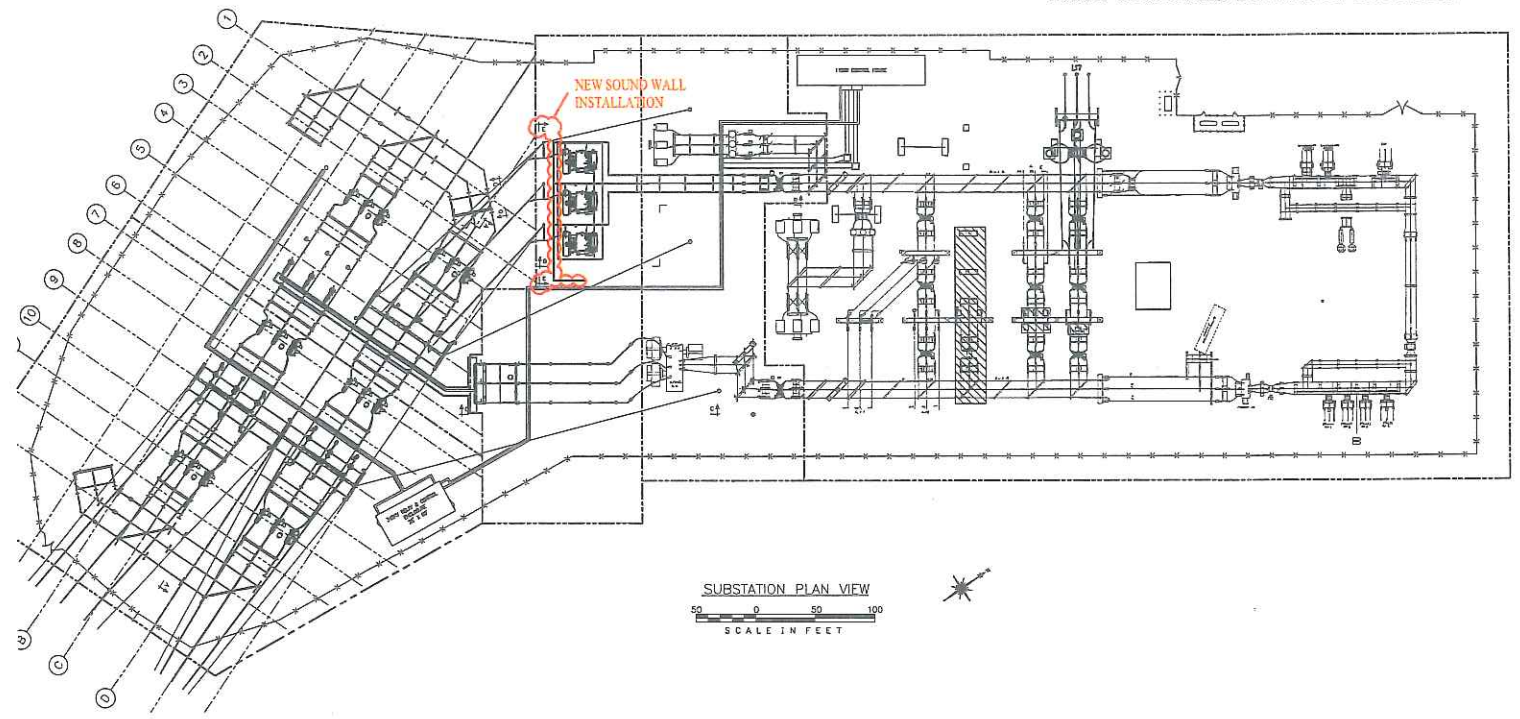
A handwritten signature in black ink, appearing to read "Robert E. Carberry". The signature is fluid and cursive, with a long horizontal stroke extending to the right.

Robert E. Carberry, Project Manager
NEEWS Siting and Permitting

Enclosure

cc: Service List, w/o enclosure
Sydney T. Schulman, Mayor, Town of Bloomfield w/enclosure

GREATER SPRINGFIELD RELIABILITY PROJECT
NORTH BLOOMFIELD SUBSTATION EXPANSION



LEGEND
 — NEW SUBSTATION EQUIPMENT
 — EXISTING SUBSTATION EQUIPMENT

D&M PLAN
NOT FOR CONSTRUCTION

10/17/2015 4:53 PM - g... - \\V:\proj\2015\GREATER SPRINGFIELD RELIABILITY PROJECT\NORTH BLOOMFIELD SUBSTATION EXPANSION\DWG\2015-02-23-10-17-2015 4:53 PM - g... - \\V:\proj\2015\GREATER SPRINGFIELD RELIABILITY PROJECT\NORTH BLOOMFIELD SUBSTATION EXPANSION\DWG\2015-02-23-10-17-2015 4:53 PM - g...

no.	date	revisions	by	chk	app	lapp
E-4	11/01/11	ISSUED FOR D & M PLAN REVIEW	CLE	JMM		
E-3	10/12/10	ISSUED FOR D & M PLAN REVIEW	JMM	JMM		
E-2	04/15/10	ADDED 4" DIM. - FOR D&M REVIEW	JMM	PKD		
E-1	03/31/10	ISSUED FOR D & M PLAN REVIEW	JAH	PKD		



50270
 date FEBRUARY 23, 2010 detailed J. HUNERDOSSE
 designed P. KONECHNE checked

REVISIONS DURING CONSTRUCTION	
NO.	DESCRIPTION
E-1	ISSUED FOR D & M PLAN REVIEW

Northwest Utilities Service Co.
 THE CONNECTICUT LIGHT AND POWER COMPANY
 NORTH BLOOMFIELD 2A
 PROPOSED GENERAL ARRANGEMENT PLAN & SECTIONS
 PLAN & SECTION VIEW
 BLOOMFIELD, CT

DATE	02/23/10	BY	JMM	APP	
SCALE	N.T.S.	DATE	02/23/10	BY	JMM
SCALE	N.T.S.	DATE	02/23/10	BY	JMM

EXHIBIT 3