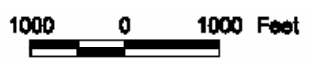
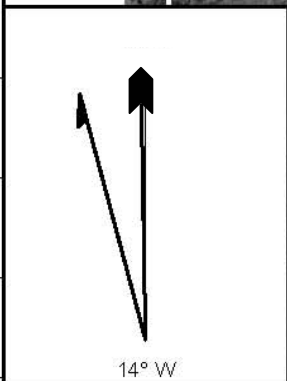
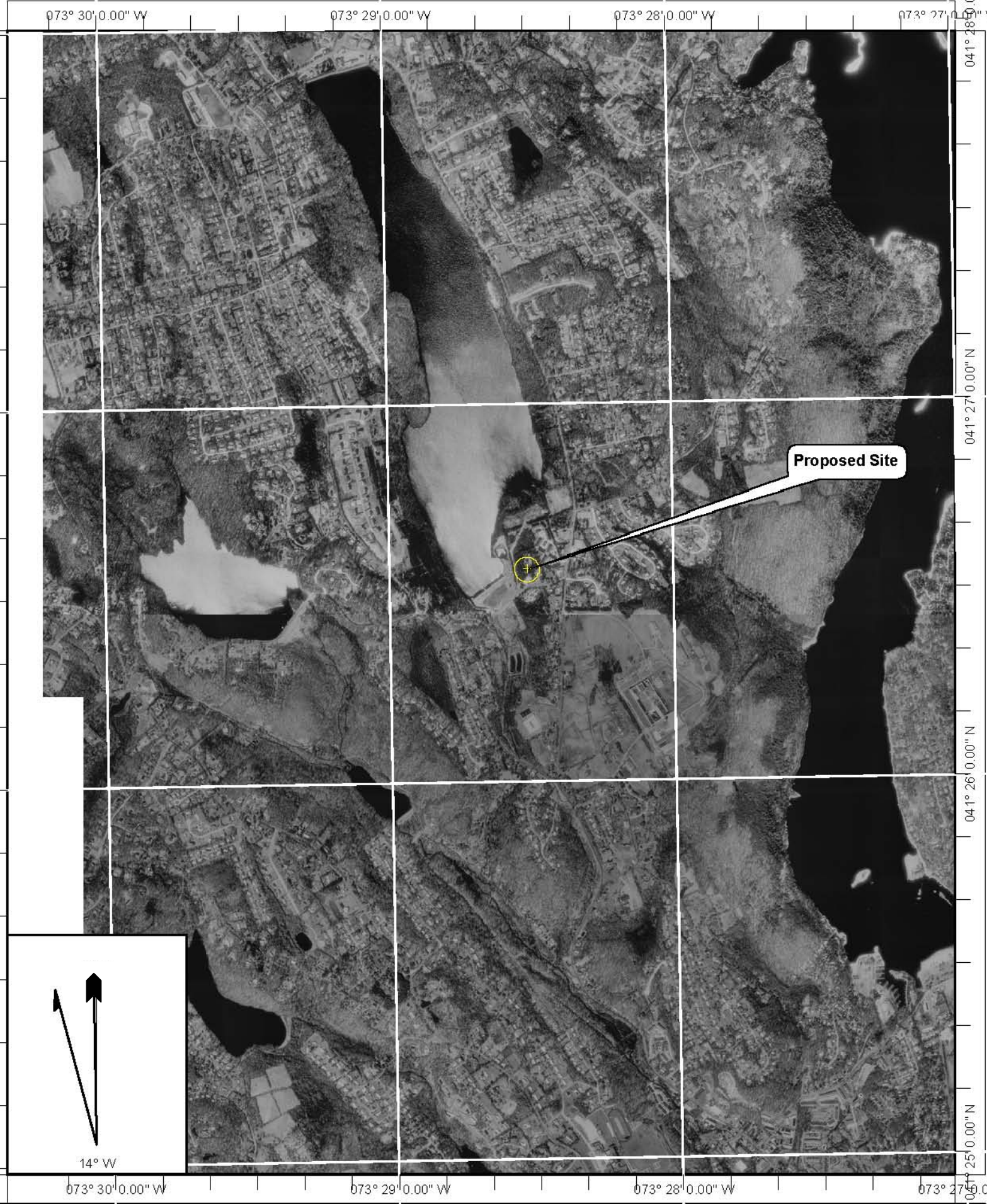


Name: DANBURY
 Date: 10/15/2007
 Scale: 1 inch equals 2000 feet



Location: 041° 26' 33.76" N 073° 28' 30.88" W
 Caption: City of Danbury
 Margerie Reservoir, Peck Road





Name: DANBURY
 Date: 10/15/2007
 Scale: 1 inch equals 1917 feet



Location: 041° 26' 33.76" N 073° 28' 30.88" W
 Caption: City of Danbury
 Margerie Reservoir



Satellite Image

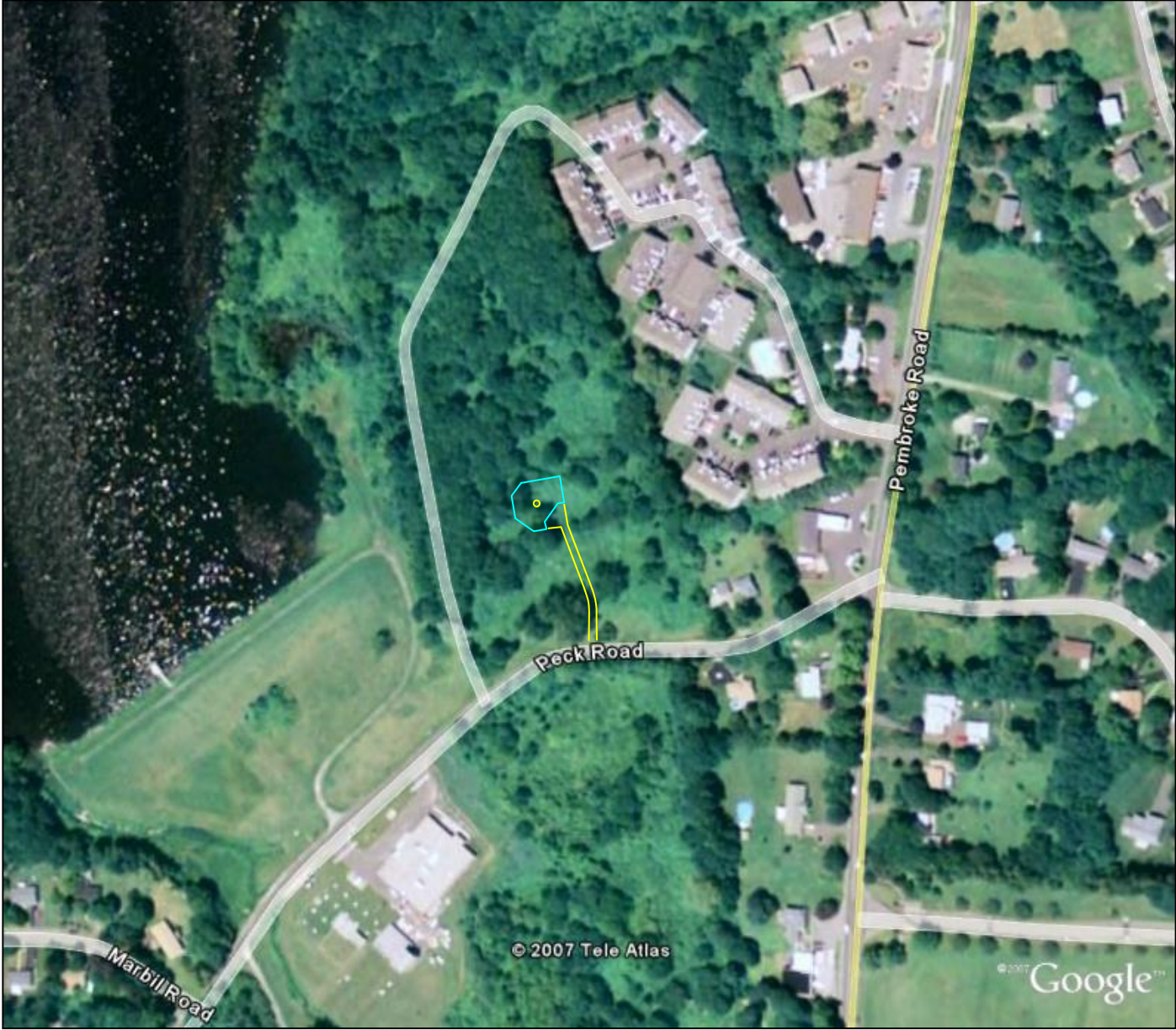
Area



Approximate site location indicated

Satellite Image

Detail



Approximate site layout and access road indicated