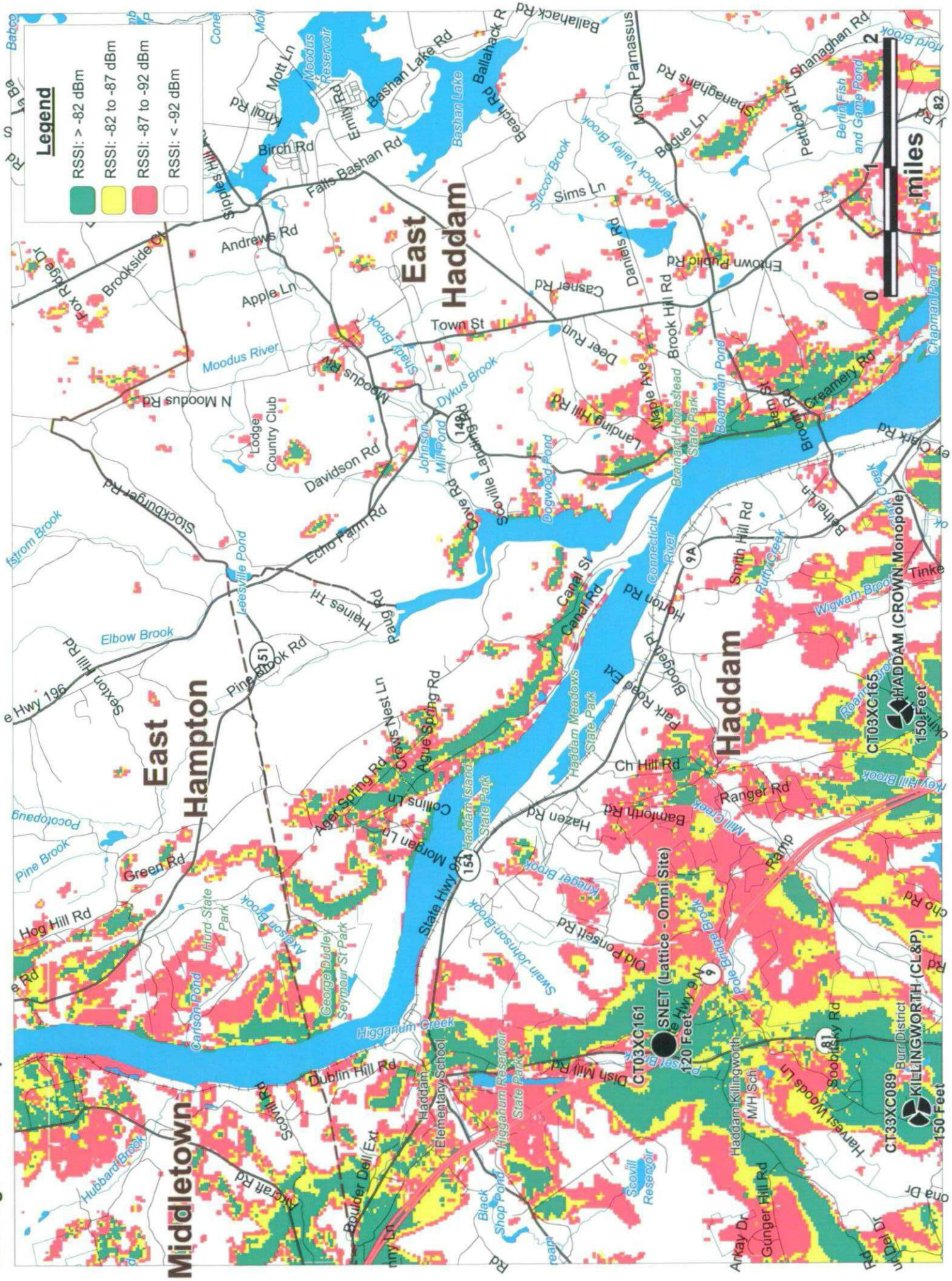
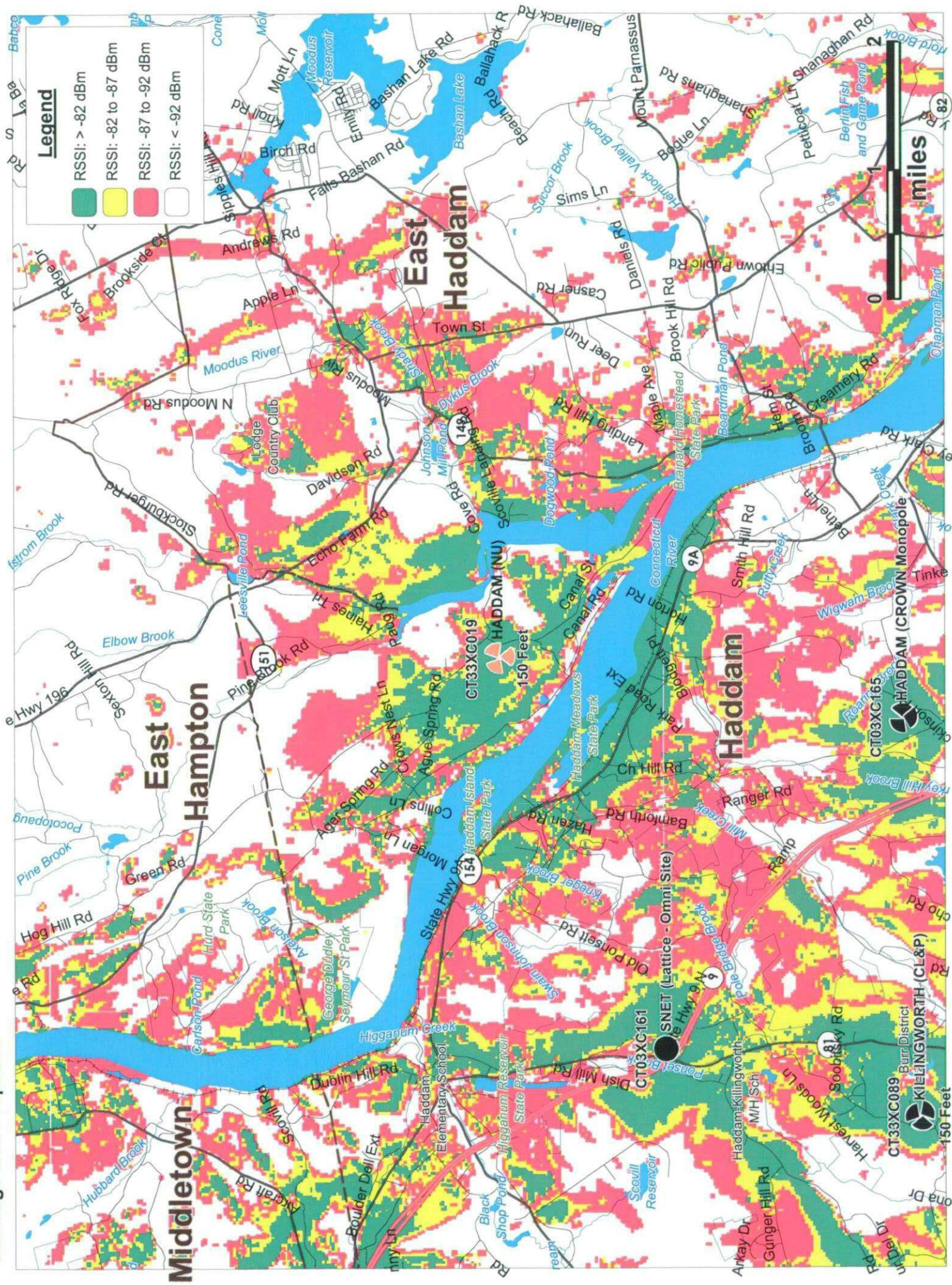




Coverage without Proposed



Coverage with Proposed



**Legend**

- RSSI: > -82 dBm
- RSSI: -82 to -87 dBm
- RSSI: -87 to -92 dBm
- RSSI: < -92 dBm

0 1 2  
miles

East Hampton

East Haddam

Haddam

Middletown

HADDAM (NU)  
150 Feet

SNET (Lattice - Omni Site)  
CT03XC161

KILLINGWORTH (CL&P)  
CT33XC089  
150 Feet

HADDAM (CROWN Monopole)  
CT03XC165

## Site Information Used in Coverage Plots

Site	Sector	Latitude	Longitude	Antenna Height	Antenna Type	Antenna Azimuth
CT03XC157	A	-72.6511	41.5594	183	DB950F85T2E-M	15
CT03XC157	B	-72.6511	41.5594	183	DB950F85T2E-M	120
CT03XC157	G	-72.6511	41.5594	183	DB950F85T2E-M	240
CT03XC158	A	-72.6706	41.5119	146	DB980H90E-M	30
CT03XC158	B	-72.6706	41.5119	146	DB980H90E-M	160
CT03XC158	G	-72.6706	41.5119	146	DB980H90E-M	270
CT03XC161	A	-72.5549	41.4717	120	DB910CE-M	0
CT03XC163	A	-72.4724	41.4039	150	DB980H65E-M	70
CT03XC163	B	-72.4724	41.4039	150	DB980H90E-M	170
CT03XC163	G	-72.4724	41.4039	150	DB980H90E-M	300
CT03XC165	A	-72.5067	41.4442	150	DB980H90E-M	310
CT03XC165	B	-72.5067	41.4442	150	DB980H90E-M	90
CT03XC165	G	-72.5067	41.4442	150	DB980H90E-M	190
CT03XC168	A	-72.6633	41.4592	87	DB980H90E-M	10
CT03XC168	B	-72.6633	41.4592	87	DB980H90E-M	150
CT03XC168	G	-72.6633	41.4592	87	DB980H90E-M	270
CT03XC169	A	-72.5934	41.5106	151	DB980F65T2E-M	320
CT03XC169	B	-72.5934	41.5106	151	DB980F65T2E-M	90
CT03XC169	G	-72.5934	41.5106	151	DB980F65T2E-M	140
CT03XC335	A	-72.4908	41.5881	120	DB980H90E-M	0
CT03XC335	B	-72.4908	41.5881	120	DB980H90E-M	120
CT03XC335	G	-72.4908	41.5881	120	DB980H90E-M	240
CT33XC018	A	-72.5437	41.565	178	DB950F85E-M	320
CT33XC018	B	-72.5437	41.565	178	DB950F85E-M	80
CT33XC018	G	-72.5437	41.565	178	DB950F85E-M	180
CT33XC060	A	-72.297	41.5028	195	DB980H90E-M	330
CT33XC060	B	-72.297	41.5028	195	DB980H90E-M	90
CT33XC060	G	-72.297	41.5028	195	DB980H90E-M	210
CT33XC089	A	-72.5663	41.4436	150	DB980H90E-M	30
CT33XC089	B	-72.5663	41.4436	150	DB980H90E-M	150
CT33XC089	G	-72.5663	41.4436	150	DB980H90E-M	270
CT33XC537	A	-72.3667	41.4369	140	DB980F65E-M	70
CT33XC537	B	-72.3667	41.4369	140	DB980F90E-M	160
CT33XC537	G	-72.3667	41.4369	140	DB980F65E-M	250
CT33XC545	A	-72.6193	41.5019	190	DB980H90E-M	330
CT33XC545	B	-72.6193	41.5019	190	DB980H90E-M	90
CT33XC545	G	-72.6193	41.5019	190	DB980H90E-M	210
CT33XC575	A	-72.3023	41.5713	178	DB980H65E-M	0
CT33XC575	B	-72.3023	41.5713	178	RR45-19-02DPL4	230
CT33XC575	G	-72.3023	41.5713	178	RR45-19-04DPL4	280
CT33XC576	A	-72.3783	41.5867	180	DB980H90E-M	0
CT33XC576	B	-72.3783	41.5867	180	DB980H90E-M	120
CT33XC576	G	-72.3783	41.5867	180	DB980H90E-M	240

## Site Information Used in Coverage Plots (cont.)

Site	Sector	Latitude	Longitude	Antenna Height	Antenna Type	Antenna Azimuth
CT33XC577	A	-72.437	41.6163	150	DB980H90E-M	0
CT33XC577	B	-72.437	41.6163	150	DB980H90E-M	120
CT33XC577	G	-72.437	41.6163	150	DB980H90E-M	240
CT33XC578	A	-72.2735	41.4684	150	DB980F65E-M	0
CT33XC578	B	-72.2735	41.4684	150	DB980F65E-M	105
CT33XC578	G	-72.2735	41.4684	150	DB980F65E-M	240
CT43XC843	A	-72.5808	41.5544	133	DB950G65E-M	290
CT43XC843	B	-72.5808	41.5544	133	DB950G65E-M	90
CT43XC843	G	-72.5808	41.5544	152	DB950G85E-M	10
CT33XC019	A	-72.4959	41.4892	150	DB950G85E-M	60
CT33XC019	B	-72.4959	41.4892	150	DB950G85E-M	180
CT33XC019	G	-72.4959	41.4892	150	DB950F85E-M	300