

**Witness:** Lynn Gresock

**Question MBLA-1:**

Please describe the sound a horse/equestrian might expect to hear while riding along the Larkin State Bridle Trail at the nearest point to the power plant. Specifically, what is the level (volume) of sound at this point? What is the frequency/pitch? Is it a steady sound or a pulsing sound?

**Response:**

The Larkin State Park Trail is, even at its nearest point, over 1,700 feet from the Facility. As shown in Figure 12 of Appendix D of the Environmental Overview (Exhibit 1 to the Petition), Monitoring Location 1 lies between the trail and the proposed Facility site, making it conservatively representative of expected impacts on the trail. Existing sound levels measured in this location indicated an  $L_{eq}$  of 52 dBA during the day and 41 dBA during nighttime. The Facility sound level at Monitoring Location 1 was modeled to be 40 dBA. The sound from the Facility may be periodically audible depending on the level of available masking noise at any given time, but will be generally be perceived as low level, even along the closest approach point of the Larkin Trail.

During normal operations, the nature of noise from the proposed facility would be essentially continuous and broadband (no tones). The sound from the Facility will be a "white noise" similar to what would be experienced from an HVAC system, as most of the influencing equipment is comprised of fans or the movement of air. No pulsing or discernable tone will be audible.

**Witness:**     **Lynn Gresock**  
                  **Fred Sellars**

**Question MBLA-2:**

Please describe the types of odors a horse/equestrian might expect to experience while riding along the Larkin State Bridle Trail at the nearest point to the power plant.

**Response:**

There will be no offsite odors from the power plant. Maximum Facility emissions, even at the point of release from the stack, are orders of magnitude below any odor recognition threshold.

CPV Towantic, LLC  
Docket No. 192B

Interrogatories Middlebury Bridle Land Association-1  
Dated: 2/24/2015  
Q-MBLA-3  
Page 1 of 1

**Witness:**     **Lynn Gresock**  
                  **Fred Sellars**

**Question MBLA-3:**

Please describe any odor that might be experienced while standing one hundred feet away from the stacks and from 500 feet away from the stacks.

**Response:**

See Response to Q-MBLA-2 above, dated 2/24/2015.

**Witness: Lynn Gresock**

**Question MBLA-4:**

Will any flashing lights be visible to horses/equestrians riding along the Larkin State Bridle Trail?

**Response:**

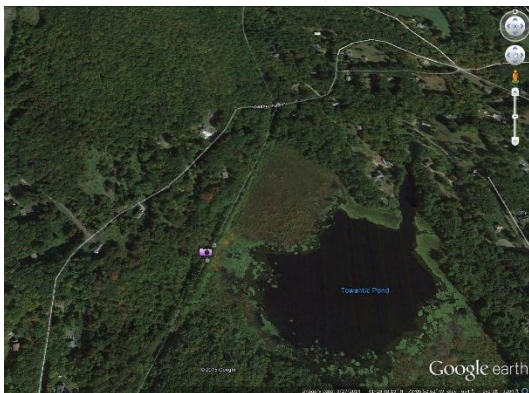
The Larkin State Park Trail is canopied with deciduous trees for most of its 10.4 miles, as described by the Trail Link website (<http://www.trailink.com/trail/larkin-state-park-trail.aspx>) and evidenced by the attached photographs taken near the site. The original Council application included the attached visual simulation from a location on the Larkin Trail near Towantic Pond, looking towards the site. In this location, the simulation indicated that only the top of the stacks could be viewed at a distance above the intervening vegetation. The stacks are anticipated to require lighting within 20 feet of the stack tops in accordance with FAA requirements. Therefore, it is possible that riders looking through certain portions of the trail's treeline could have a distant view of those lights.



R·W·BECK

FIGURE 4.2-7  
VIEW 1: FROM BRIDLE TRAIL BY  
TOWANTIC POND TOWARDS SITE

TOWANTIC ENERGY PROJECT  
TOWANTIC ENERGY, L.L.C.



**Representative Photographs of the Larkin  
Bridle Trail Taken at Towantic Pond**

**Witness: Lynn Gresock**

**Question MBLA-5:**

At any time, will any trucks or other vehicles be visible along the Larkin State Bridle Trail from the property? (i.e. any vehicles travelling along the perimeter of the property)?

**Response:**

Based on final proposed Facility elevation and existing topography and vegetation, no vehicles traveling along the Facility's perimeter roads will be visible from the Larkin State Park Trail.

**Witness: Andrew J. Bazinet**

**Question MBLA-6:**

What plans are in place to assure the safety of horses/riders travelling along the Larkin State Bridle Trail? What plans are in place for those locations where the trail crosses a road? For example, will drivers of all construction trucks or trucks required for operation under oil conditions be advised that horses might be frightened by big or noisy vehicles? Will drivers be instructed that horses and riders have the right of way and to stop for horses crossing the road?

**Response:**

Given that the Larkin State Park Trail is over 1700 feet from the proposed Facility at its nearest point, there should be minimum safety concerns for the horses/riders. The Facility's suppliers, including construction trucks, will obey all traffic laws and signs.