



STATE OF CONNECTICUT

CONNECTICUT SITING COUNCIL

Ten Franklin Square, New Britain, CT 06051

Phone: (860) 827-2935 Fax: (860) 827-2950

E-Mail: siting.council@ct.gov

www.ct.gov/csc

January 6, 2015

TO: Council Members

FROM: Melanie Bachman, Acting Executive Director *MAB*

RE: **DOCKET 192B**- CPV Towantic, LLC Motion to Reopen and Modify the June 23, 1999 Certificate of Environmental Compatibility and Public Need based on changed conditions pursuant to Connecticut General Statutes §4-181a(b) for the construction, maintenance and operation of a 785 MW dual-fuel combined cycle electric generating facility located north of the Prokop Road and Towantic Hill Road intersection in the Town of Oxford, Connecticut.

The Connecticut Siting Council (Council) has scheduled a public field review for this docket for Thursday, January 15, 2015, beginning at 1:30 p.m. at Woodruff Hill Road, Oxford. Council members and all interested persons will park on Woodruff Hill Road and will meet at the cul-de-sac at the end of Woodruff Hill Road.

A public hearing is scheduled for Thursday, January 15, 2015, beginning at 3:00 p.m. at Oxford High School, Auditorium, 61 Quaker Farms Road, Oxford.

A map and directions are enclosed. Please bring appropriate footwear.

In the event of inclement weather, the Council will contact the Town of Oxford and parties and intervenors, as well as post a hearing cancellation notice on the website and notify the Secretary of State. The snow date for the public hearing is Thursday, January 29, 2015, in the Town of Oxford at a venue to be determined.

MB/MP

Enclosure

- c: Secretary of the State (via e-mail service)
- Parties and Intervenors (via e-mail service)
- United Reporters (via e-mail service)
- Tech Theatrical Services, LLC (via e-mail service)

DIRECTIONS - DOCKET 192B – OXFORD

TO: Power Plant Site – accessed via end of Woodruff Hill Road

From Enfield Area

Take Interstate 91 South to Interstate 84 West.
See directions from I-84 West on next page.

From Farmington Area

Take Route 4 East to I-84 West.
See directions from I-84 West on next page.

From Hartford Area

Take I-91 South to I-84 West.
See directions from I-84 West on next page.

From Meriden Area

Take I-691 West to I-84 West.
See directions from I-84 West on next page.

From Milford Area

Take I-95 South to Route 8 North.
Take Route 8 North to I-84 West.
See direction from I-84 West on next page.

From New Britain Area

Take Route 72 West to I-84 West.
See directions from I-84 West on next page.

From Salisbury Area

Take Route 44 East to Route 8 South.
Take Route 8 South to I-84 West.
See directions from I-84 West on next page.

From Stamford Area

Take I-95 North to Route 7 North.
Follow Route 7 North to I-84 East.
See direction from I-84 East on next page.

From Stonington Area

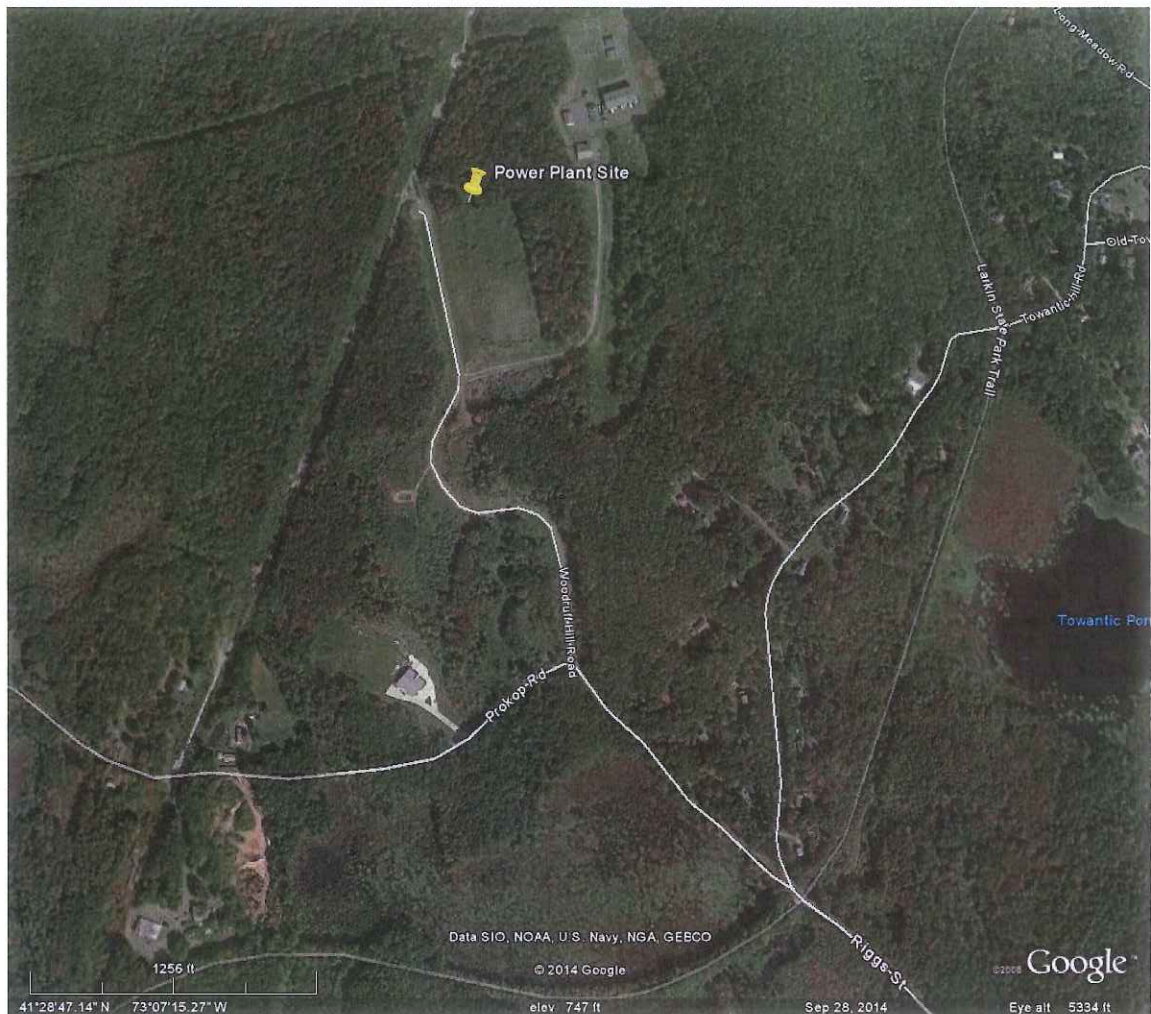
Take I-95 South to Route 9 North.
Take Route 9 North to Route 72 West in New Britain.
Take Route 72 West I-84 West.
See directions from I-84 West below.

Via Interstate 84 West (from points east of Oxford)

Take Exit 16 (Route 188) off of I-84 West.
Turn left onto Strongtown Road (Route 188).
Proceed on Strongtown Road (Route 188) for about 1.1 miles.
Turn left onto Airport Road.
Proceed on Airport Road for about 0.8 miles.
Turn right onto Christian Street.
Proceed on Christian Street for about 1.1 miles.
Turn left onto Commerce Drive.
Proceed on Commerce Drive for about 0.4 miles.
Commerce Drive becomes Jacks Hill Road. Continue straight.
Proceed on Jacks Hill Road for about 0.8 miles.
Turn left onto Riggs Street.
Proceed on Riggs Street for about 0.7 miles.
The road forks. Bear slightly left onto Prokop Road.
Proceed on Prokop Road for a bout 0.3 miles.
The road forks again. Bear slightly right onto Woodruff Hill Road.
Proceed on Woodruff Hill Road for about 0.5 miles until it ends.
Park on Woodruff Hill Road

Via Interstate 84 East (from points west of Oxford)

Take Exit 16 (Route 188) off of I-84 West.
Turn left onto Strongtown Road (Route 188).
Proceed on Strongtown Road (Route 188) for about 1.0 miles.
Turn left onto Airport Road.
Proceed on Airport Road for about 0.8 miles.
Turn right onto Christian Street.
Proceed on Christian Street for about 1.1 miles.
Turn left onto Commerce Drive.
Proceed on Commerce Drive for about 0.4 miles.
Commerce Drive becomes Jacks Hill Road. Continue straight.
Proceed on Jacks Hill Road for about 0.8 miles.
Turn left onto Riggs Street.
Proceed on Riggs Street for about 0.7 miles.
The road forks. Bear slightly left onto Prokop Road.
Proceed on Prokop Road for a bout 0.3 miles.
The road forks again. Bear slightly right onto Woodruff Hill Road.
Proceed on Woodruff Hill Road for about 0.5 miles until it ends.
Park on Woodruff Hill Road.



TO: Oxford High School, 61 Quaker Farms Road, Oxford

From the Site (Woodruff Hill Road)

Proceed on Woodruff Hill Rd. for about 0.5 miles towards Prokop Road.
At the end of Woodruff Hill Road, proceed straight onto Prokop Road.
Proceed on Prokop Road for about 0.30 miles.
Prokop Road becomes Riggs Street. Continue straight.
Proceed on Riggs Street for about 3.0 miles until it ends.
Turn right onto Oxford Road (Route 67).
Proceed on Oxford Road for about 0.2 miles.
Turn left onto Governors Hill Road.
Proceed on Governors Hill Road for about 2.4 miles until it ends.
Turn left onto Quaker Farms Road (Route 188).
Proceed straight on Route 188 for about 2.0 miles.
The entrance to the Oxford High School is on the right at 61 Quaker Farms Rd.

From Enfield Area

Take Interstate 91 South to Interstate 84 West.
See directions from I-84 West on next page.

From Farmington Area

Take Route 4 East to I-84 West.
See directions from I-84 West on next page.

From Hartford Area

Take I-91 South to I-84 West.
See directions from I-84 West on next page.

From Meriden Area

Take I-691 West to I-84 West.
See directions from I-84 West on next page.

From Milford Area

Take I-95 South to Route 8 North.
Take Route 8 North to I-84 West.
See direction from I-84 West on next page.

From New Britain Area

Take Route 72 West to I-84 West.
See directions from I-84 West on next page.

From Salisbury Area

Take Route 44 East to Route 8 South.
Take Route 8 South to I-84 West.
See directions from I-84 West below.

From Stamford Area

Take I-95 North to Route 7 North.
Follow Route 7 North to I-84 East.
See direction from I-84 East below.

From Stonington Area

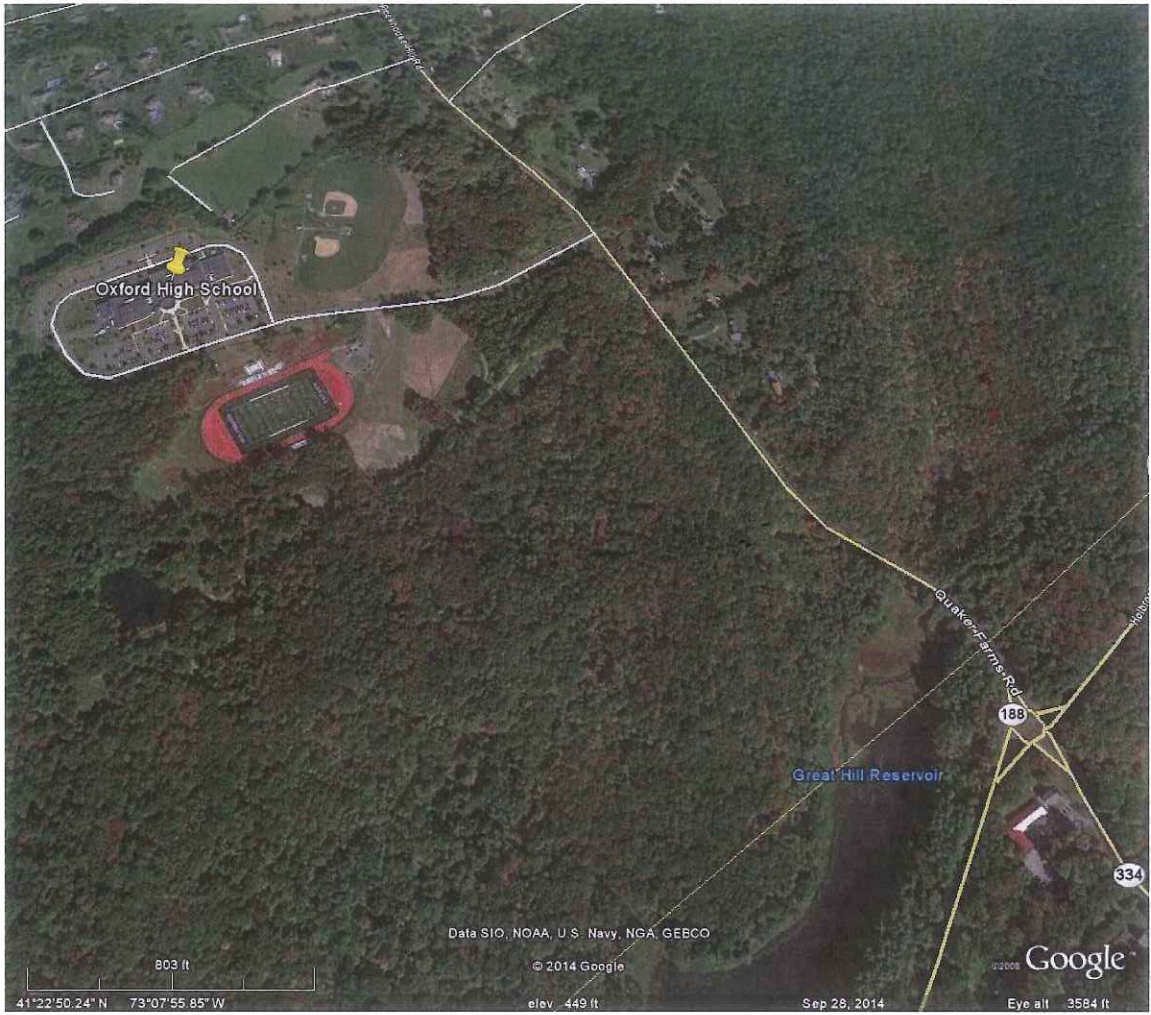
Take I-95 South to Route 9 North.
Take Route 9 North to Route 72 West in New Britain.
Take Route 72 West I-84 West.
See directions from I-84 West below.

Via Interstate 84 West (from points east of Oxford)

Take Exit 16 off of I-84 West.
Turn left onto Strongtown Road (Route 188).
Proceed on Strongtown Road (Route 188) for about 2.3 miles until it ends.
Turn left onto Route 67 (Seymour Road).
Proceed on Route 67 for about 0.1 miles.
Turn right onto Quaker Farms Road (Route 188).
Proceed on Route 188 for about 6.1 miles.
The entrance to the Oxford High School is on the right at 61 Quaker Farms Rd.

Via Interstate 84 East (from points west of Oxford)

Take Exit 16 off of I-84 West.
Turn left onto Strongtown Road (Route 188).
Proceed on Strongtown Road (Route 188) for about 2.2 miles until it ends.
Turn left onto Route 67 (Seymour Road).
Proceed on Route 67 for about 0.1 miles.
Turn right onto Quaker Farms Road (Route 188).
Proceed on Route 188 for about 6.1 miles.
The entrance to the Oxford High School is on the right at 61 Quaker Farms Rd.



Oxford High School

Quaker Farms Rd
188

Great Hill Reservoir

334

803 ft
41°22'50.24" N 73°07'55.85" W

Data SIO, NOAA, U.S. Navy, NGA, GEBCO

© 2014 Google

elev. 449 ft

Sep 28, 2014

Eye alt 3584 ft
Google

TO RESTAURANT: Oxford Pizza Palace, 71 Oxford Road, Oxford

FROM HEARING LOCATION: Oxford High School, 61 Quaker Farms Road, Oxford

Turn right onto Quaker Farms Road (Route 188).
Proceed on Quaker Farms Road (Route 188) for approximately 0.5 miles.
At a rotary, go around three-quarters of the circle and turn onto Holbrook Road.
Proceed on Holbrook Road for about 1.7 miles.
Holbrook Road becomes Great Hill Road. Continue straight.
Proceed on Great Hill Road for about 1.1 miles until it ends.
Turn left onto Oxford Road.
Oxford Pizza Palace is the first property on the left, located at 71 Oxford Road.

