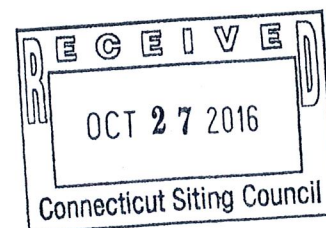


KENNETH C. BALDWIN

280 Trumbull Street  
Hartford, CT 06103-3597  
Main (860) 275-8200  
Fax (860) 275-8299  
kbaldwin@rc.com  
Direct (860) 275-8345

Also admitted in Massachusetts

October 24, 2016



Melanie A. Bachman  
Acting Executive Director  
Connecticut Siting Council  
10 Franklin Square  
New Britain, CT 06051

ORIGINAL

Re: **Docket No. 470 – Application of NTE Connecticut, LLC for a Certificate of Environmental Compatibility and Public Need for the Construction, Maintenance and Operation of an Electric Power Generating Facility at 180 and 189 Lake Road, Killingly, Connecticut**

Dear Ms. Bachman:

At the start of the Siting Council's public comment hearing on October 20, 2016, Mark Mirabito provided a brief project overview for the benefit of the Council and members of the public in attendance. Enclosed are fifteen (15) copies of the PowerPoint slides that were used in Mr. Mirabito's presentation. All of this information, in one form or another, has previously been filed with the Council.

Please let me know if you have any questions or need any additional information.

Sincerely,

A handwritten signature in blue ink, appearing to read "Kenneth C. Baldwin".

Kenneth C. Baldwin

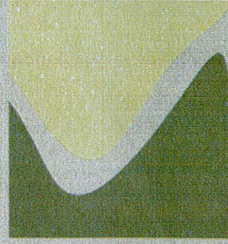
KCB/kmd  
Enclosures  
Copy to:

Parties and Intervenors of Records  
Mark Mirabito

15483469-v1

ORIGINAL

RECEIVED  
OCT 27 2016  
Connecticut Siting Council

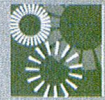


**Killingly  
Energy Center**

an NTE Energy Project

**Connecticut Siting Council  
Public Comment Hearing Session  
Docket No. 470**

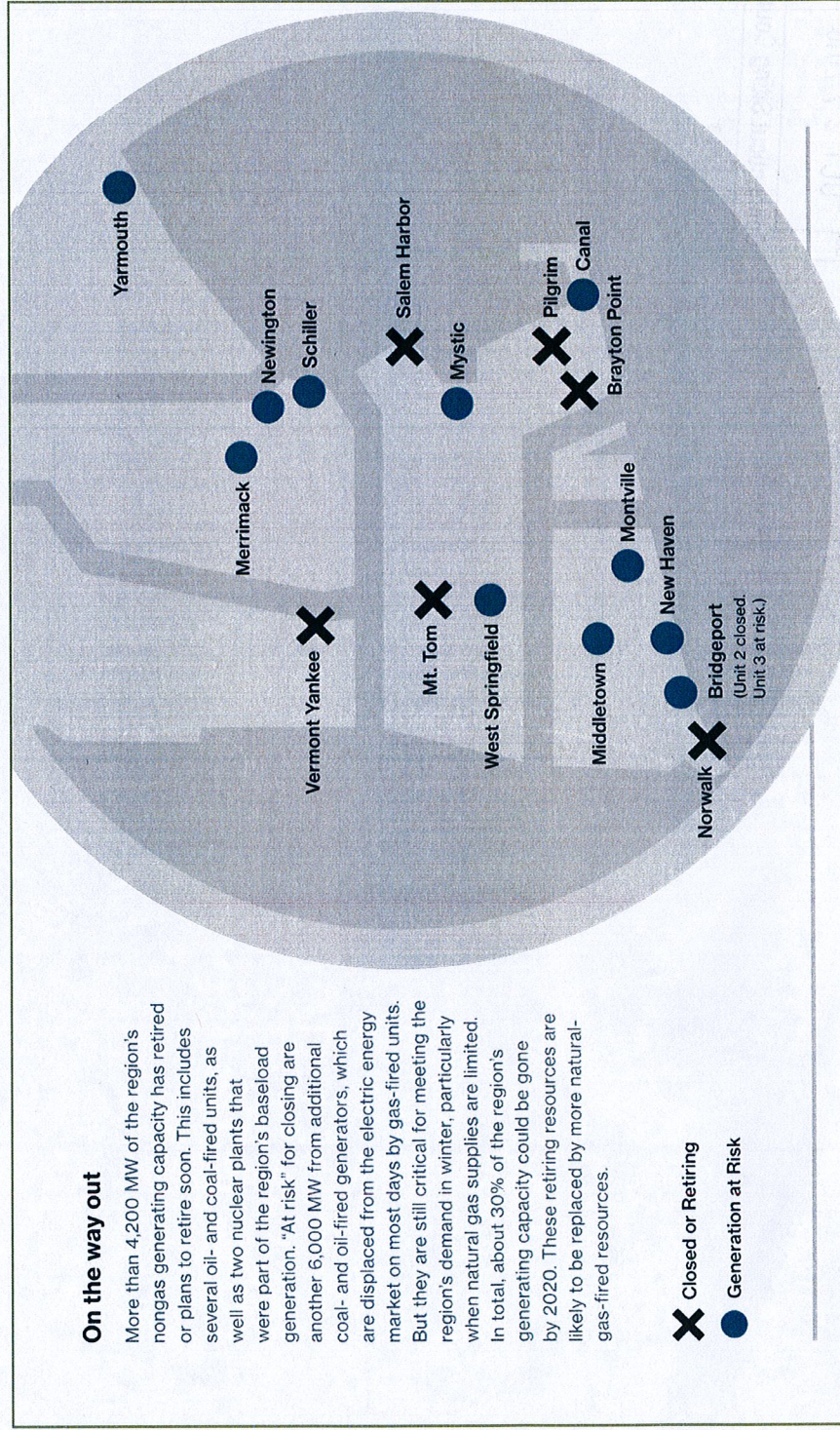
*October 20, 2016*



**NTE ENERGY**

# KEC | Regional Electric Generation Needs

- 4,200 MW of region's non-gas generating capacity has retired or will retire soon
- "At risk" for closing are another 6,000 MW from additional coal and oil generators, including approximately 401 MW of coal and 1,772 MW of oil generators in Connecticut



# KEC | Project Overview

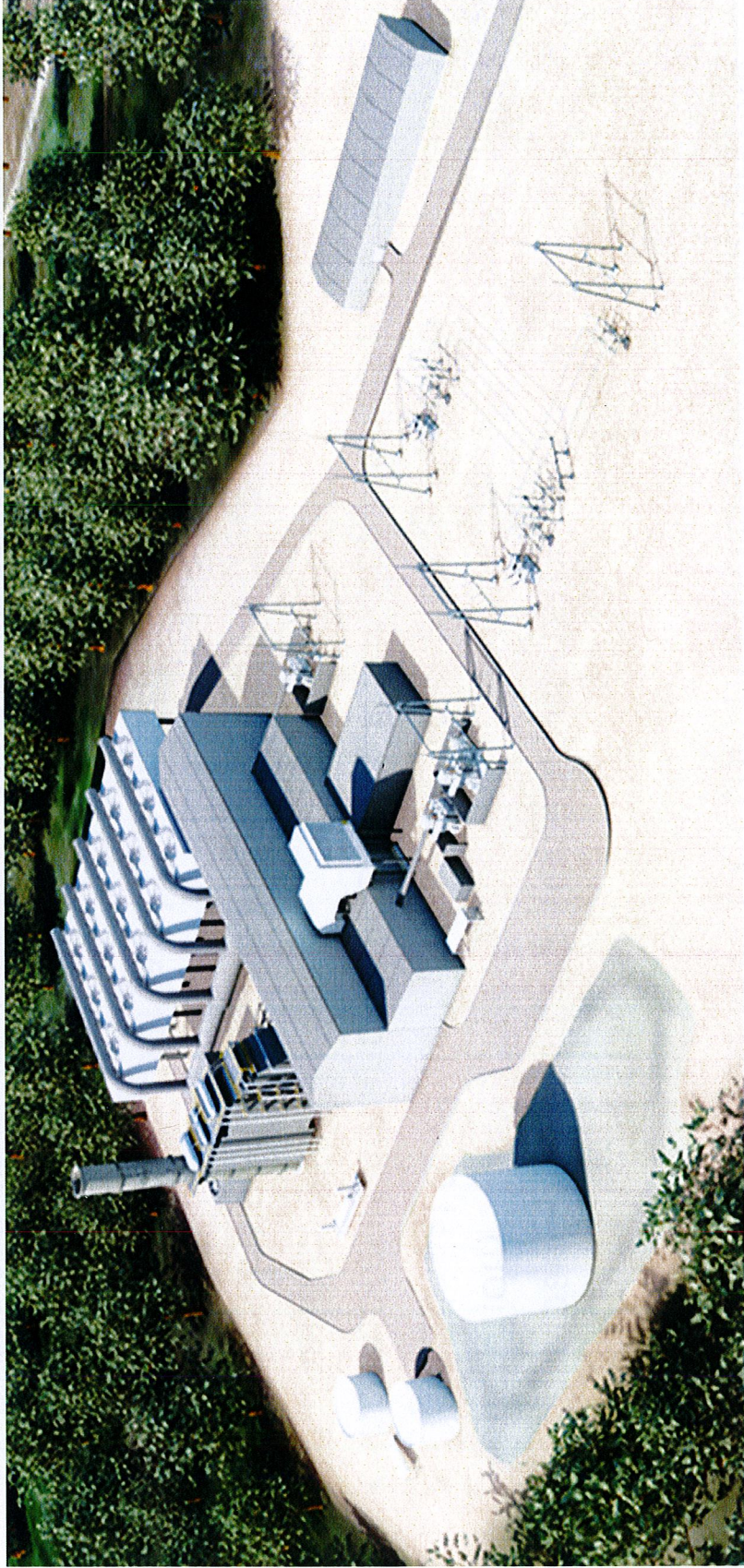
## **Type of Facility:**

- State-of-the-art 550-MW 1 x 1 combined-cycle, electric generating facility
- 150-foot exhaust stack
- “Baseload” power source (capable of continuous, steady operation)
- Operational flexibility to respond to changing demand
- Incorporates advanced air cooling technology to reduce water demand by 95%
- Equipment designed and installed to minimize vibration

## **Electrical Interconnection and Fuel Supply:**

- Adjacent 345-kV circuit
- Natural gas via nearby lateral connection through existing right-of-way; limited ULSD backup fuel

# KEC | Project Rendering



# KEC | Location

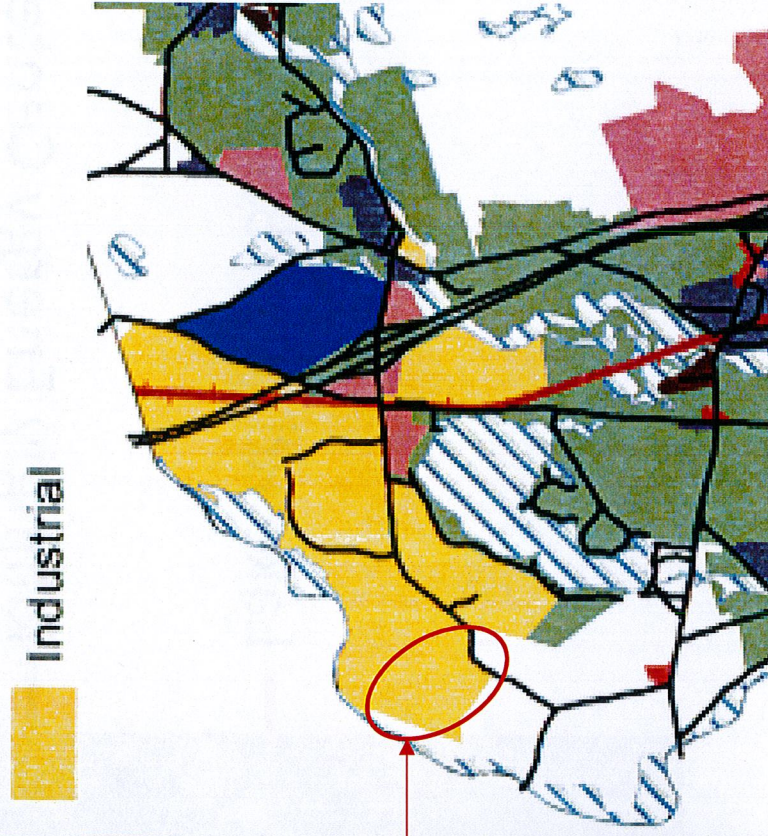
## Site Location

73 acre site at 180/189 Lake Rd.

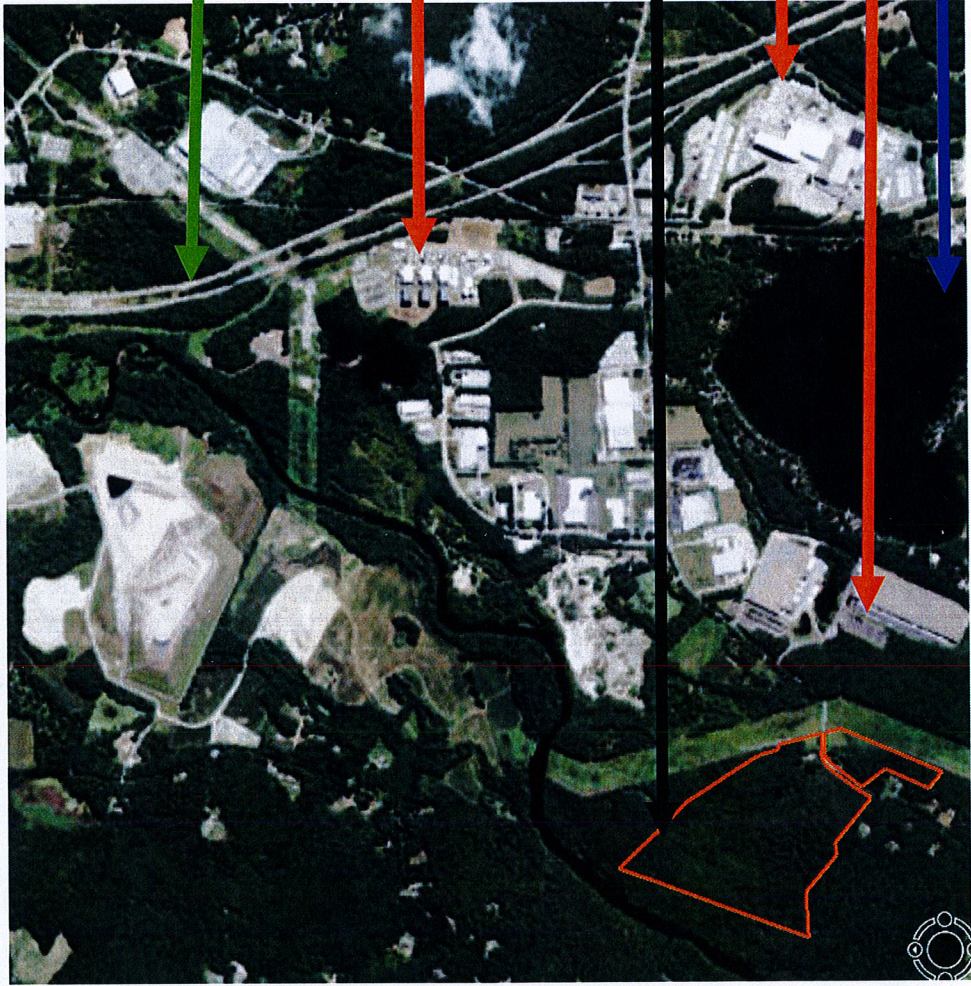


## Future Land Use

Town of Killingly, Plan of Conservation and Development: 2010 - 2020



# KEC | Location – Killingly Industrial Park



I-395

Lake Rd. Gen Station

Killingly Energy Center

Frito-Lay

Rite-Aid Dist. Center

Alexander Lake

# KEC | Direct Benefits

- 250-350 direct construction jobs
- 25-30 direct operations jobs
- One of the largest tax payers in Killingly
- Large wastewater utility customer
- Community Environmental Benefits Agreement
- Other Town infrastructure improvements



# Preliminary Project Schedule

## **Spring/Summer 2016**

- Interconnection Request
- Air Permit Application
- Siting Council Application

## **Winter/Spring 2017**

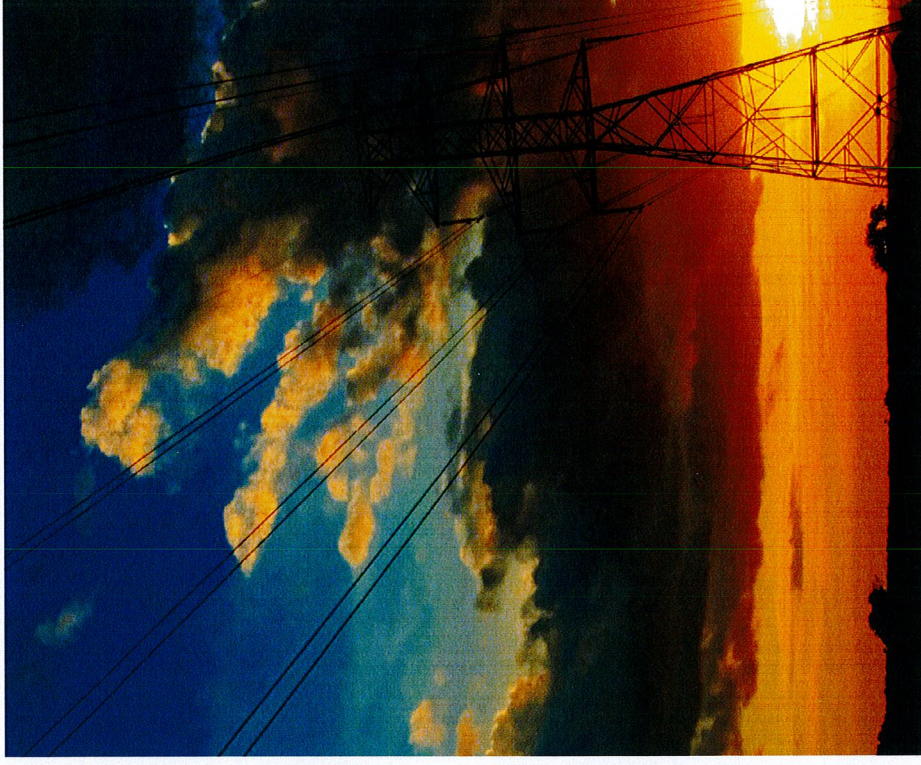
- Anticipated Permits  
and Approval

## **Summer 2017**

- Start of Construction

## **Summer 2020**

- Commercial Operation



[www.killingyenergycenter.com](http://www.killingyenergycenter.com)

