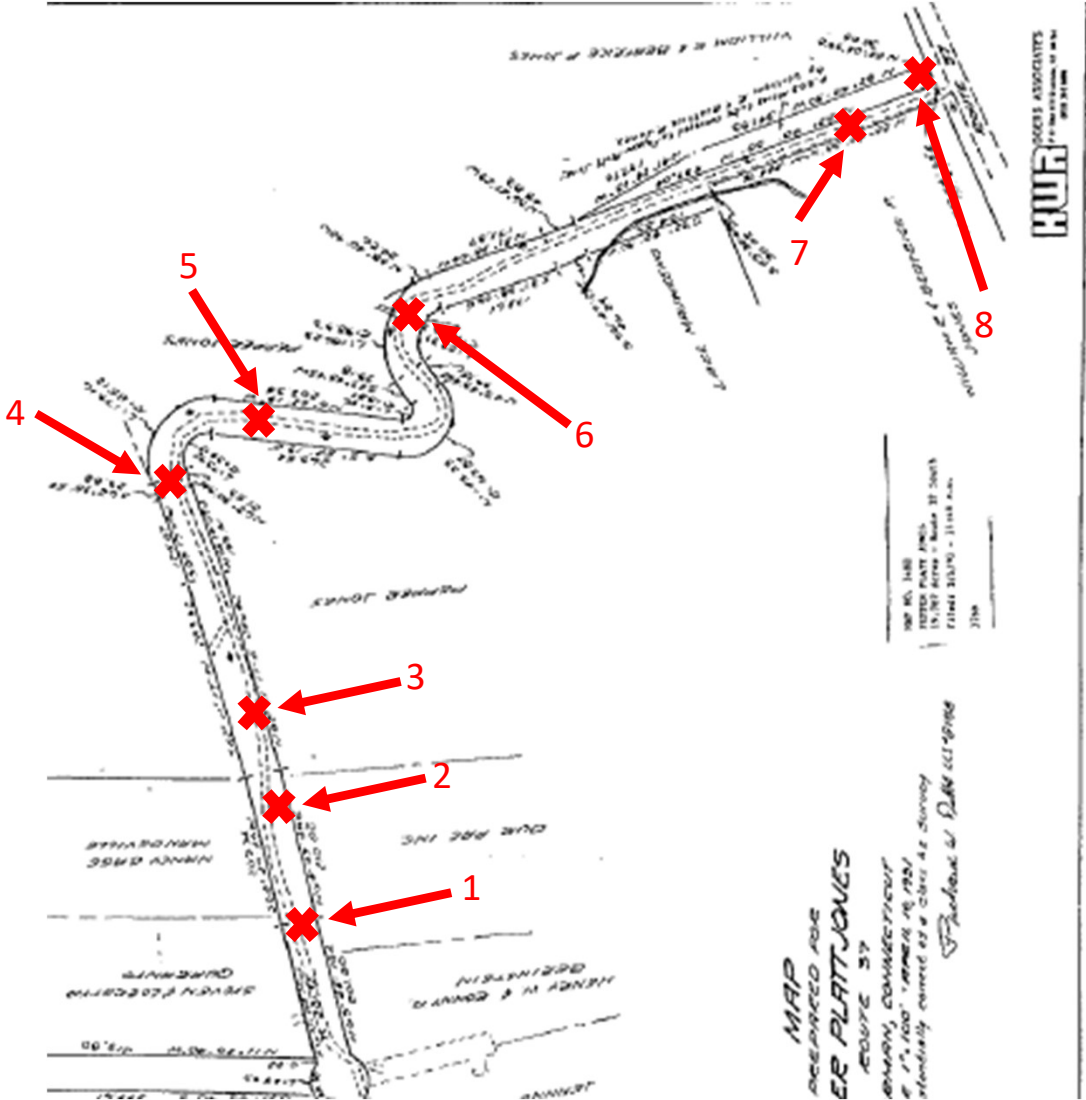


# Coote Hill Road



Location One

(NO OPPORTUNITY TO PASS)



Long  
Drainage  
Ditch

Steep Drop  
Off



Long Drain  
Ditch





# Location Two

(NO OPPORTUNITY TO PASS)



Drainage Swale to control drainage from mountain above



Steep downward slope



Drainage Swale to control erosion from mountain above



Location Three

NO OPPORTUNITY TO PASS)



Slope  
Upwards

Drainage  
Ditch

- Severe Slope
- Private Property



# Location Four

(NO OPPORTUNITY TO PASS)



- Drainage Swale to control road erosion
- Private Property



Drainage Swale to control erosion



- Drainage Swale
- Private Property



# Location Five



Drainage Swale (100 yds) to control mountain water erosion to road



Drainage from road. No traffic or erosion begins.

(NO OPPORTUNITY TO PASS)

Major Drainage Swale





# Location Six (One-Lane Bridge)

(NO OPPORTUNITY TO PASS)



Lane Bridge Edge



# Location Seven

(NO OPPORTUNITY TO PASS)



Drainage Swale



Traffic coming off of Route 37



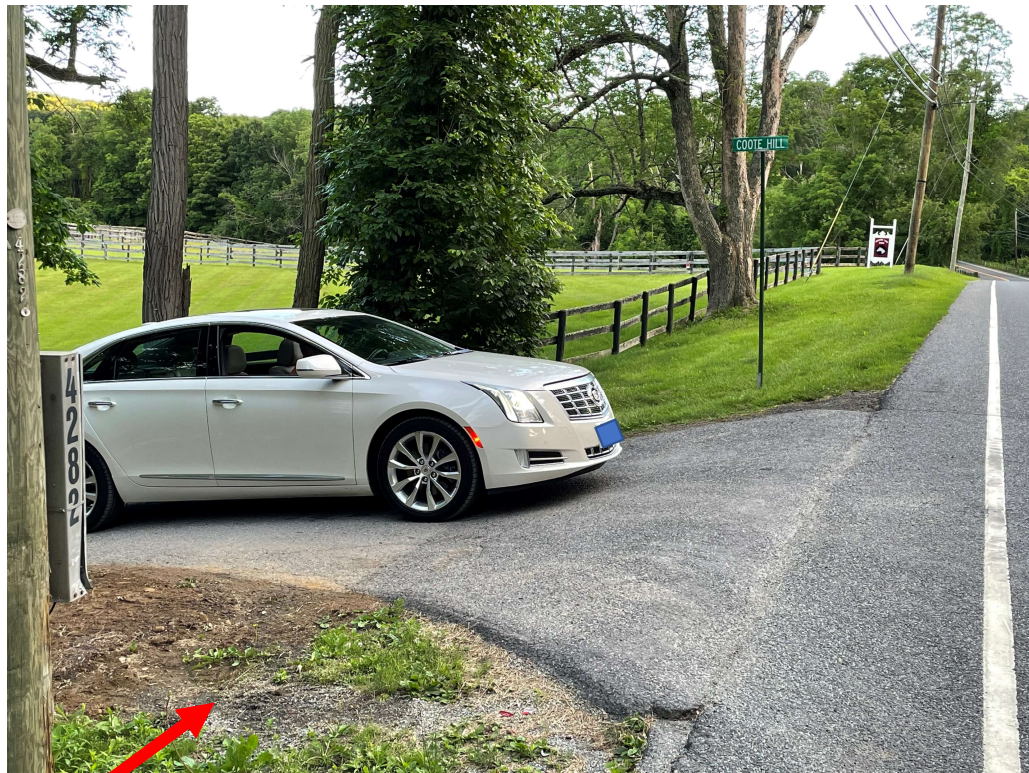
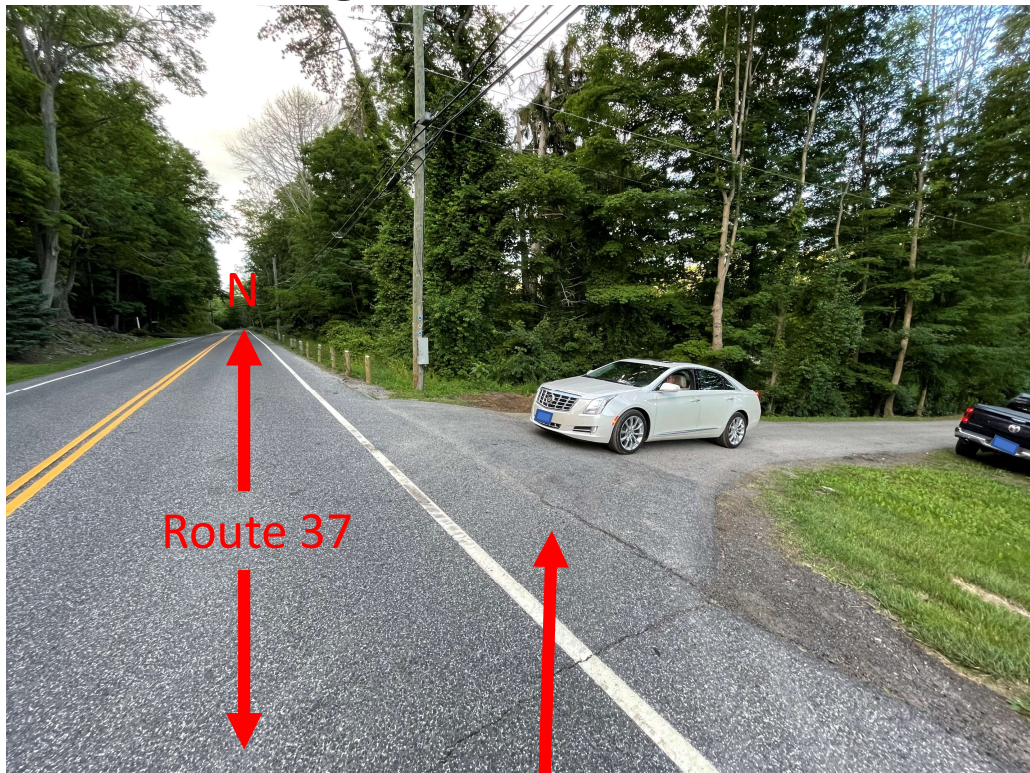
Slope to Lake Mauweehoo

Drainage Swale



# Location Eight

(NO OPPORTUNITY TO PASS)



Must stop on Route 37 to enter Coote Hill Road if car is exiting. Dangerous!

Limited visibility and single car capacity from/to Route 37