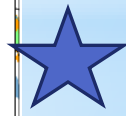
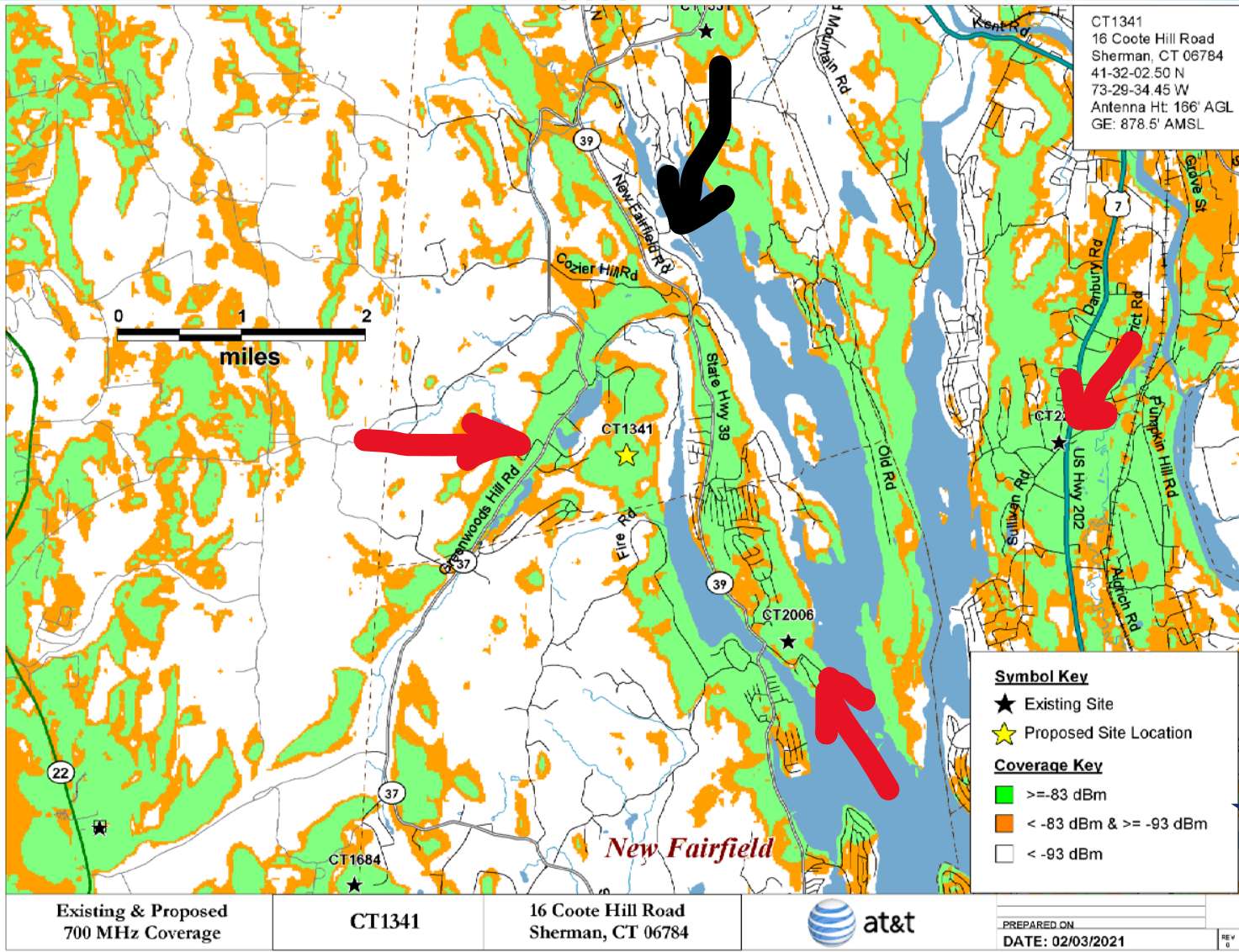




* Cellular Tower Analysis

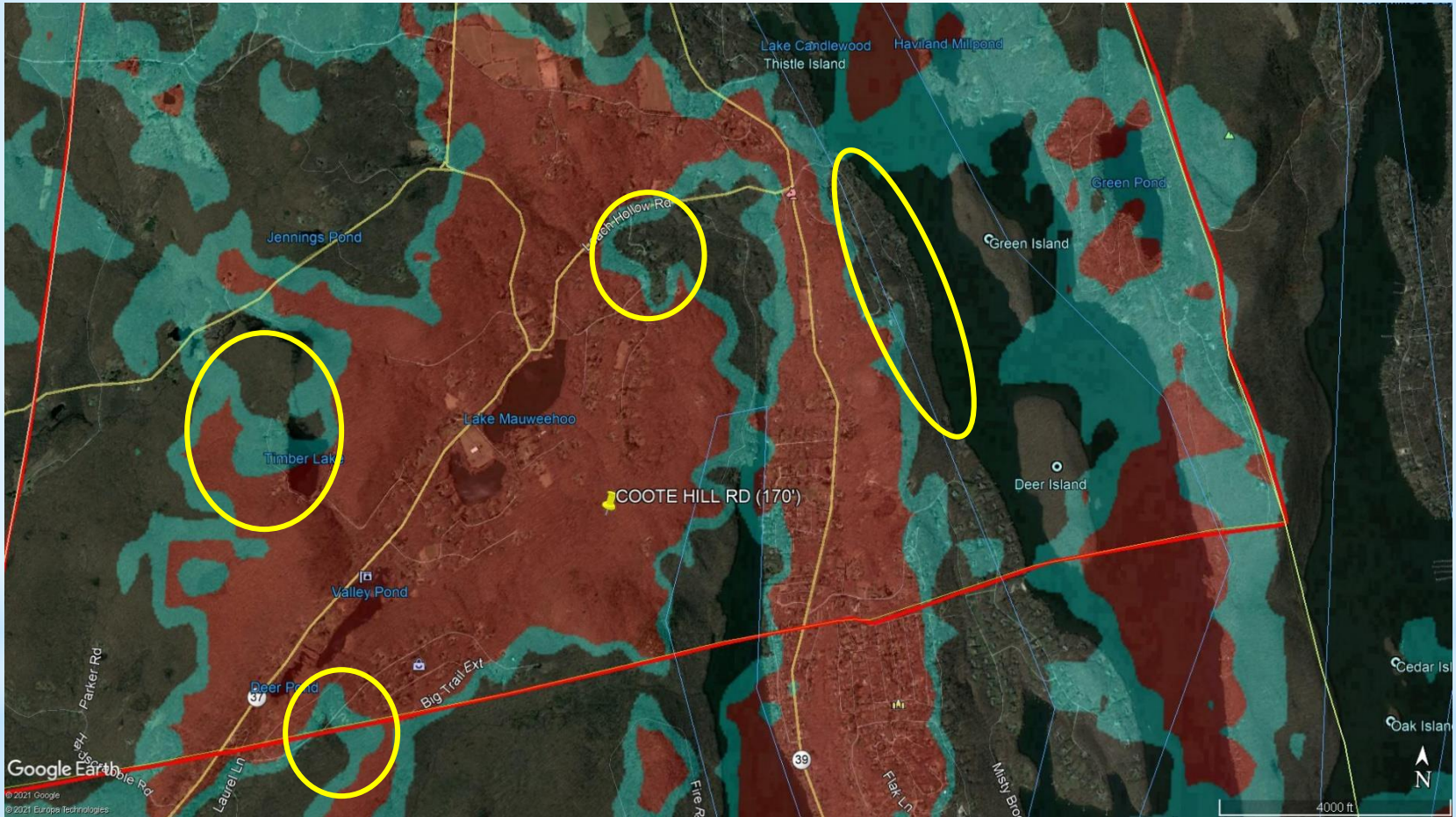
AT&T Coverage Prediction after Adding Coote Hill Rd. Site @ 170'

Attachment 4: CT1341 Existing 700 MHz LTE Coverage with Proposed Site for the AT&T Network

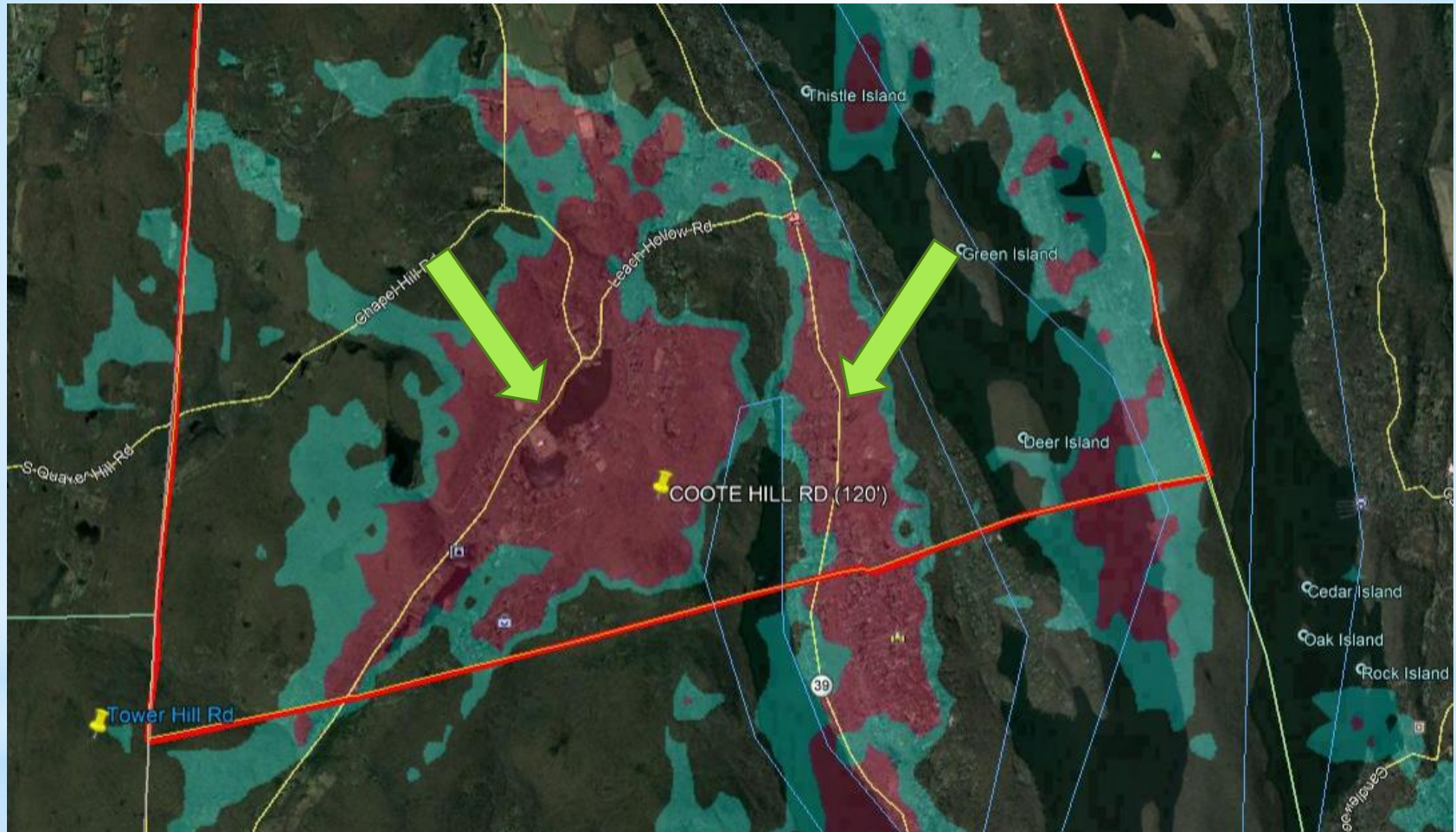


Predicted Cellular Coverage from Coote Hill Rd - 170' (-83 dBm in red) & (-93 dBm in light blue)

-
-

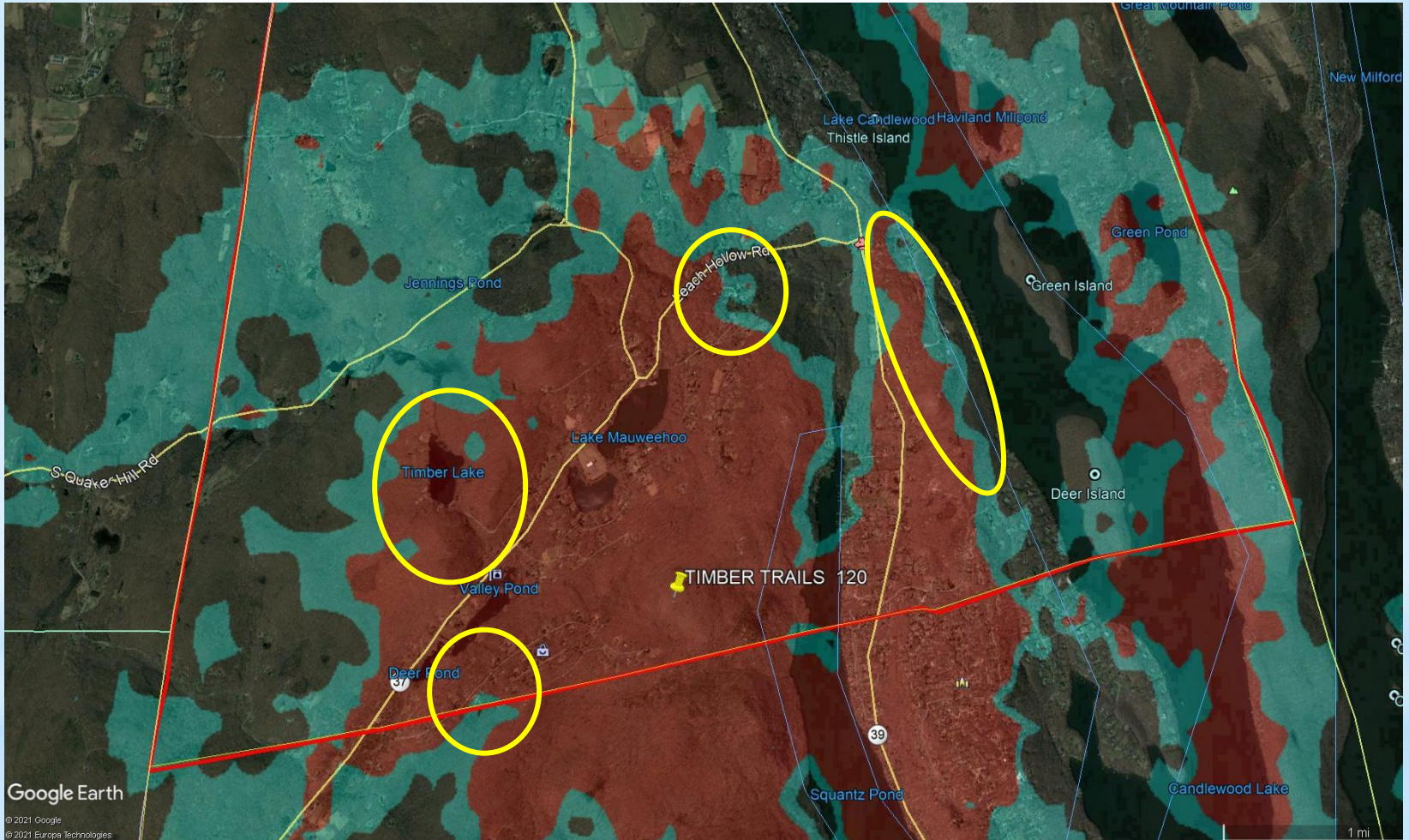


Predicted Cellular Coverage from Coote Hill Rd - 120' (-83 dBm in red) & (-93 dBm in light blue)

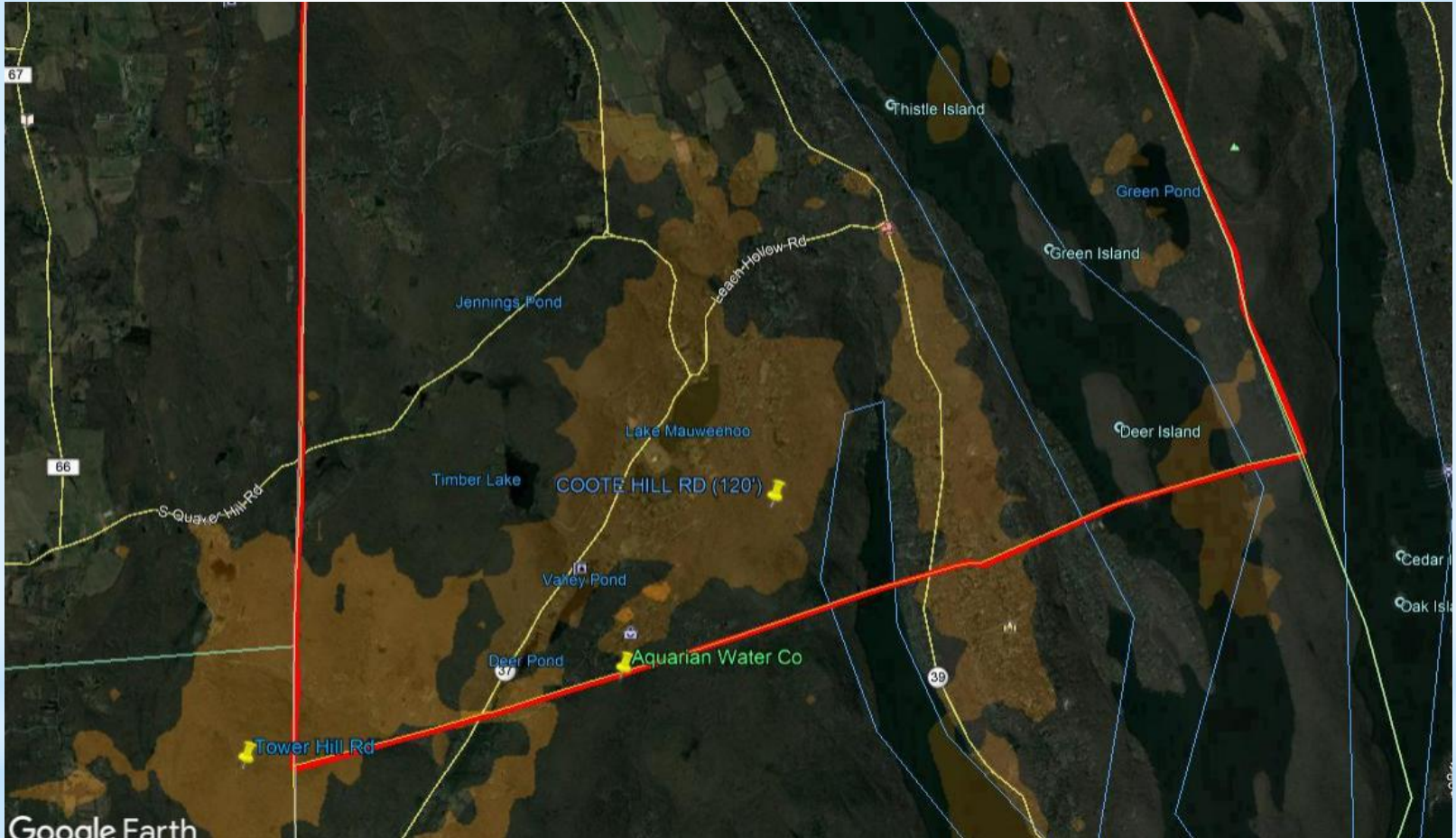


Predicted Cellular Coverage from Timber Trails- 120' (-83 dBm in red) & (-93 dBm in light blue)

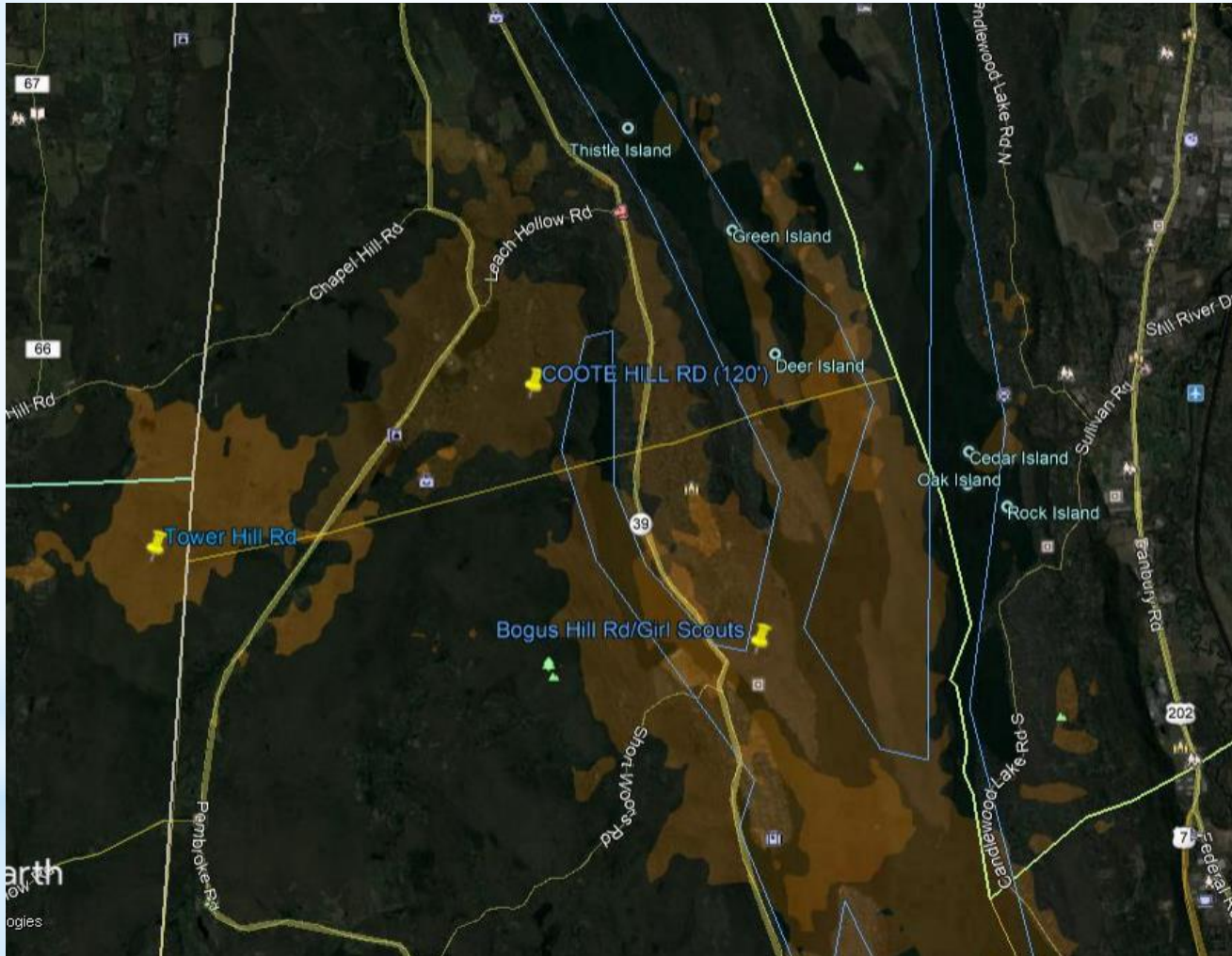
-
-



Predicted Cellular Coverage from Coote Hill Rd & Tower Hill Rd- 120' & 60' (-83 dBm) - Area Covered: 12.68%



Predicted Cellular Coverage from Coote Hill Rd, Tower Hill Rd, and Bogus Hill (in New Fairfield)- 120' & 60' & 150' (-83 dBm) - Area Covered: 14.83%



[Back](#)