



**PRELIMINARY HISTORIC
RESOURCES DETERMINATION**

May 14, 2020

**Verizon Wireless
20 Alexander Drive
Wallingford, Connecticut 06492**

**Re: Proposed Telecommunications Facility
5151 Park Avenue
Fairfield, Connecticut**

On behalf of Verizon Wireless, All-Points Technology Corporation, P.C. ("APT") performed an evaluation with respect to the proposed Facility's potential effects on historic resources proximate to the referenced project site.

APT completed an independent review of the National Register of Historic Places ("NRHP") and SHPO files to determine if any listed sites, or sites eligible for listing, are located proximate to the Site. The results of our review revealed that one such resource is located within one-half mile of the site.¹ The Merritt Parkway, designated a National Scenic Byway and listed on the NRHP, is located north of the proposed site. A cultural resource screening map is provided as an attachment to this memorandum.

Based on the results of our visual evaluation, isolated (and primarily seasonal) views of the Facility may be experienced from select locations along the northbound lanes of the Parkway, west of the project site.

As part of its obligations for compliance with the National Environmental Policy Act ("NEPA"), Verizon Wireless will be submitting required documentation to the State Historic Preservation Office ("SHPO") for this agency's review and determination. The SHPO submission will be prepared by a qualified architectural historian that meets criteria developed by the Secretary of the Interior. That process has not yet been initiated.

Sincerely,

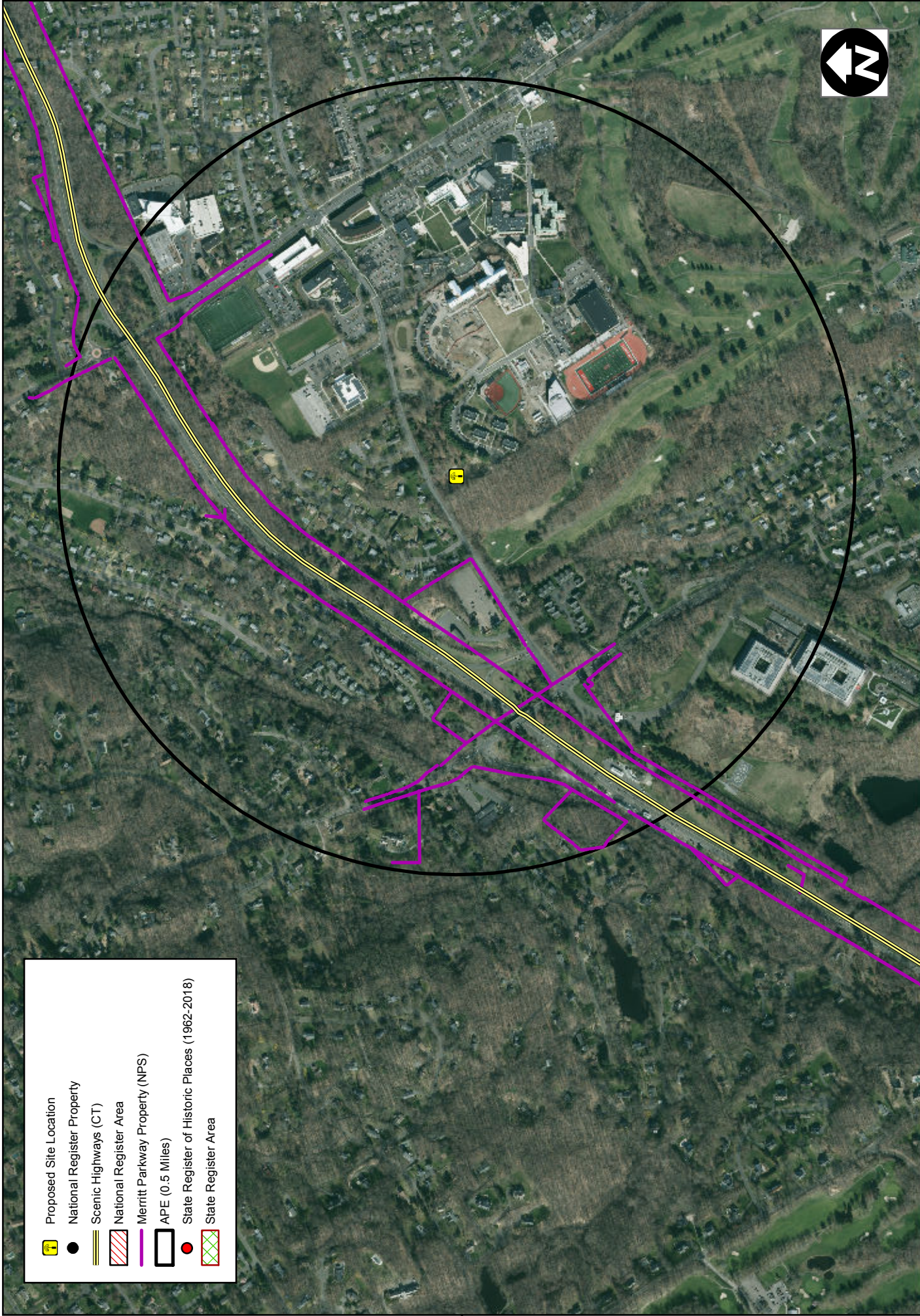
A handwritten signature in cursive script that reads "Brian Gaudet".



Brian Gaudet
Project Manager

Attachment

¹ For towers under 200 feet tall, the Area of Potential Effect ("APE") has been established at 0.5 mile. This distance represents the APE established cooperatively by the Federal Communications Commission, Advisory Council on Historic Preservation and the National Conference of State Historic Preservation Officers.

Cultural Resource Screening Map



-  Proposed Site Location
-  National Register Property
-  Scenic Highways (CT)
-  National Register Area
-  Merritt Parkway Property (NPS)
-  APE (0.5 Miles)
-  State Register of Historic Places (1962-2018)
-  State Register Area

