



PHOTOGRAPHED ON 1/24/2020

**EXISTING**

PHOTO

20

LOCATION

WEeping WILLOW LANE

ORIENTATION

SOUTHEAST

DISTANCETO SITE

+/- 0.15 MILE

VISIBILITY

NOT VISIBLE



PHOTOGRAPHED ON 1/24/2020

**EXISTING**

PHOTO

21

LOCATION

**DONNA DRIVE**

ORIENTATION

**SOUTHWEST**

DISTANCETO SITE

**+/- 0.14 MILE**

VISIBILITY

**YEAR ROUND**



**PROPOSED**

PHOTO	LOCATION	ORIENTATION	DISTANCETO SITE	VISIBILITY
21	<b>DONNA DRIVE</b>	<b>SOUTHWEST</b>	<b>+/- 0.14 MILE</b>	<b>YEAR ROUND</b>



PHOTOGRAPHED ON 1/24/2020  
35mm Focal Length

**EXISTING**

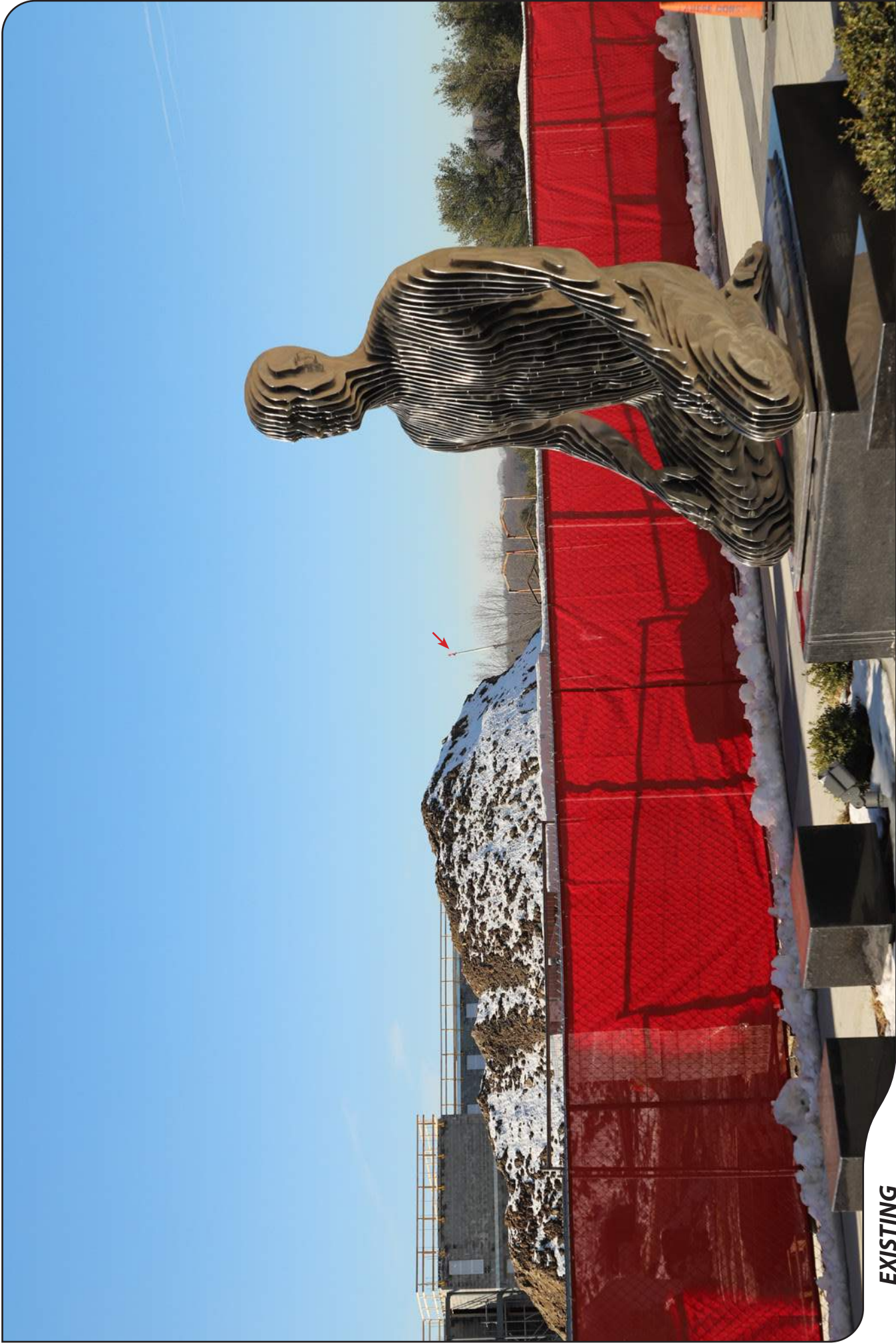
PHOTO	LOCATION	ORIENTATION	DISTANCETO SITE	VISIBILITY
22	DONNA DRIVE AT JEFFERSON STREET	SOUTHWEST	+/- 361 FEET	YEAR ROUND





**PROPOSED**

PHOTO	LOCATION	ORIENTATION	DISTANCETO SITE	VISIBILITY
22	DONNA DRIVE AT JEFFERSON STREET	SOUTHWEST	+/- 361 FEET	YEAR ROUND



PHOTOGRAPHED ON 1/24/2020

**EXISTING**

PHOTO

**23**

LOCATION

**SACRED HEART UNIVERSITY**

ORIENTATION

**WEST**

DISTANCE TO SITE

**+/- 0.22 MILE**

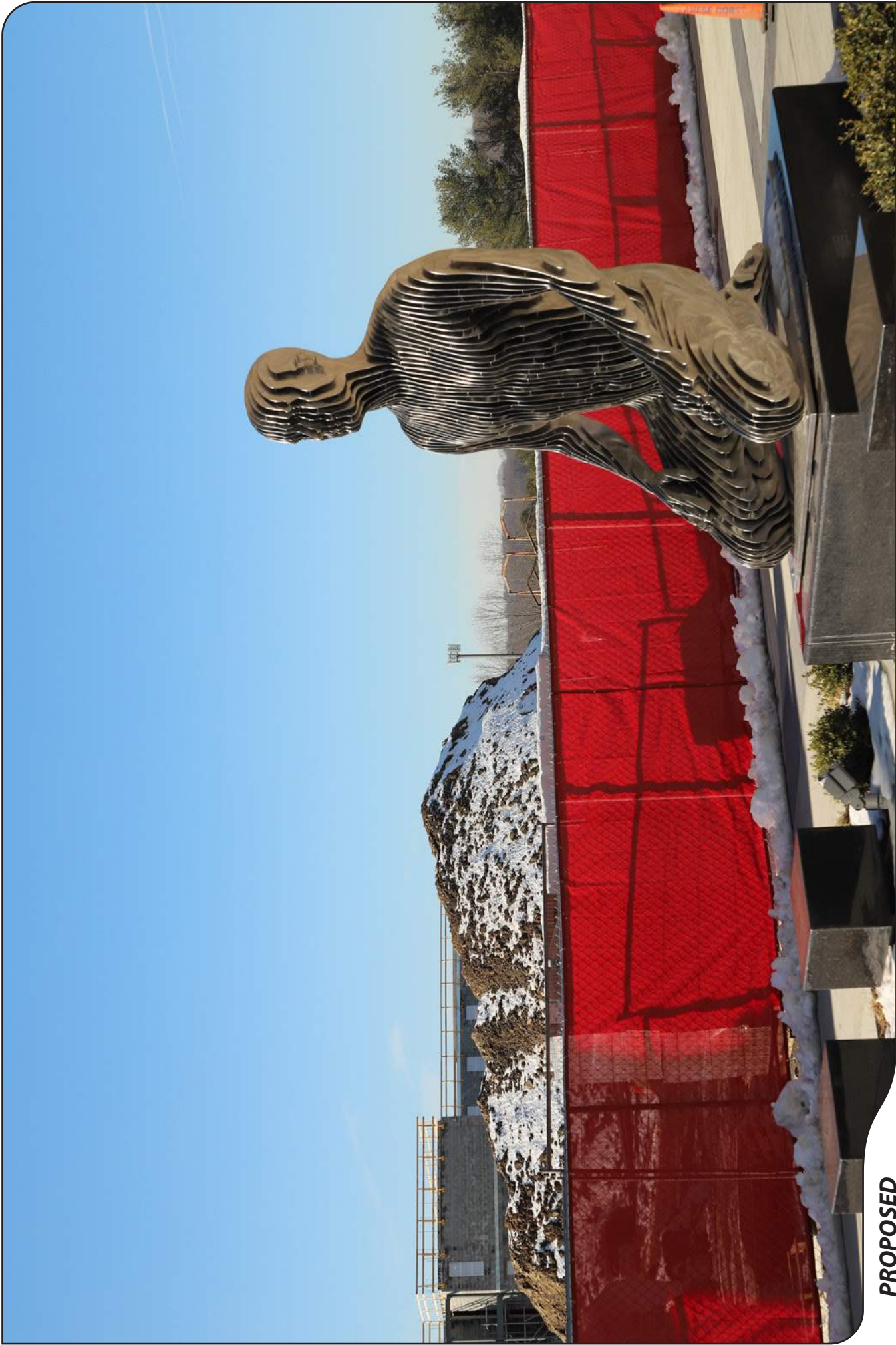
VISIBILITY

**YEAR ROUND**



**ALL-POINTS  
TECHNOLOGY CORPORATION**





**PROPOSED**

PHOTO	LOCATION	ORIENTATION	DISTANCETO SITE	VISIBILITY
23	SACRED HEART UNIVERSITY	WEST	+/- 0.22 MILE	YEAR ROUND



PHOTOGRAPHED ON 1/24/2020

**EXISTING**

PHOTO

LOCATION  
**SACRED HEART UNIVERSITY**

ORIENTATION  
**NORTHWEST**

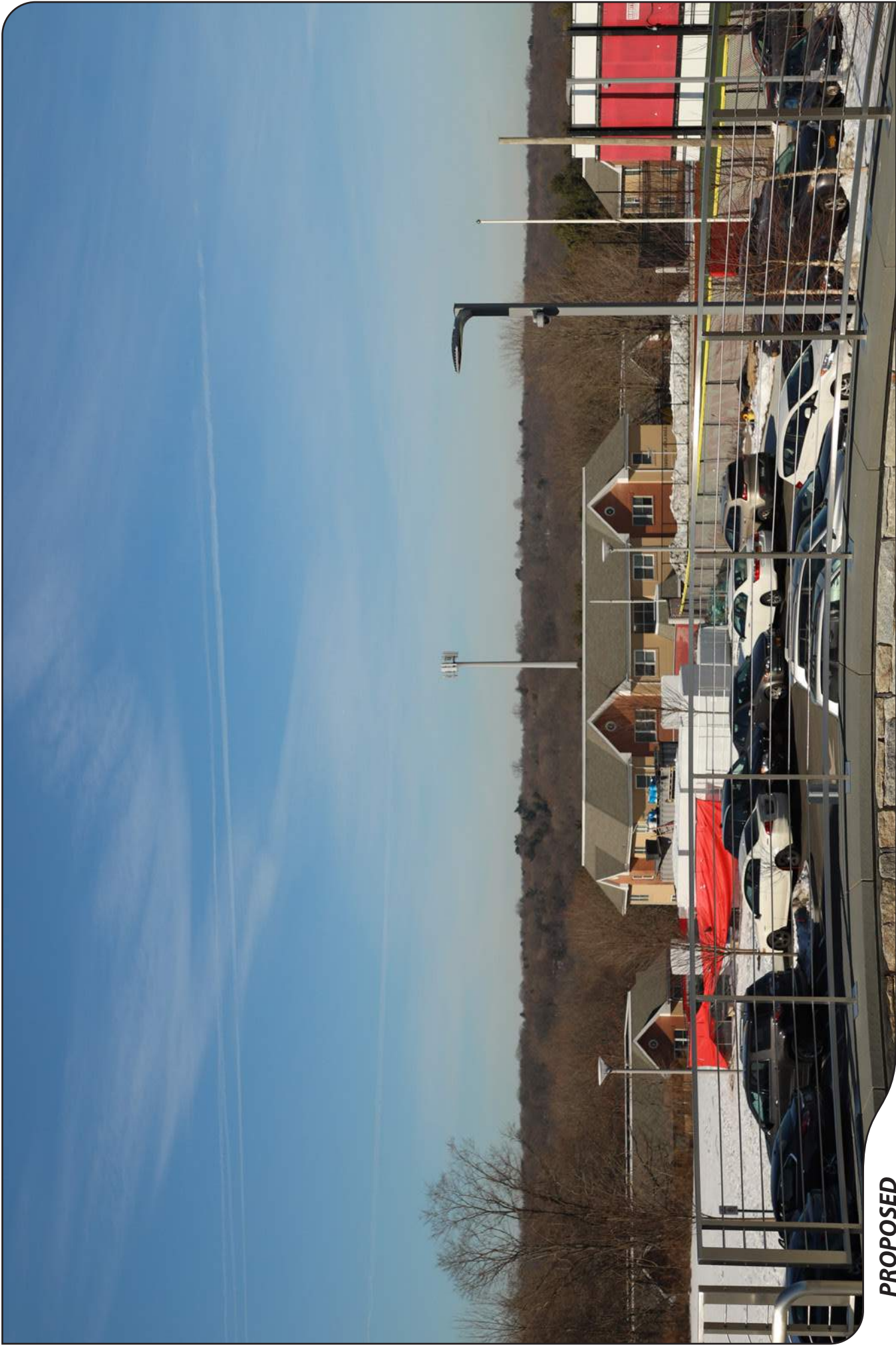
DISTANCETO SITE  
**+/- 0.17 MILE**

VISIBILITY  
**YEAR ROUND**

**24**







**PROPOSED**

PHOTO	LOCATION	ORIENTATION	DISTANCETO SITE	VISIBILITY
24	SACRED HEART UNIVERSITY	NORTHWEST	+/- 0.17 MILE	YEAR ROUND



PHOTOGRAPHED ON 1/24/2020

**EXISTING**

PHOTO

25

LOCATION

SACRED HEART UNIVERSITY

ORIENTATION

WEST

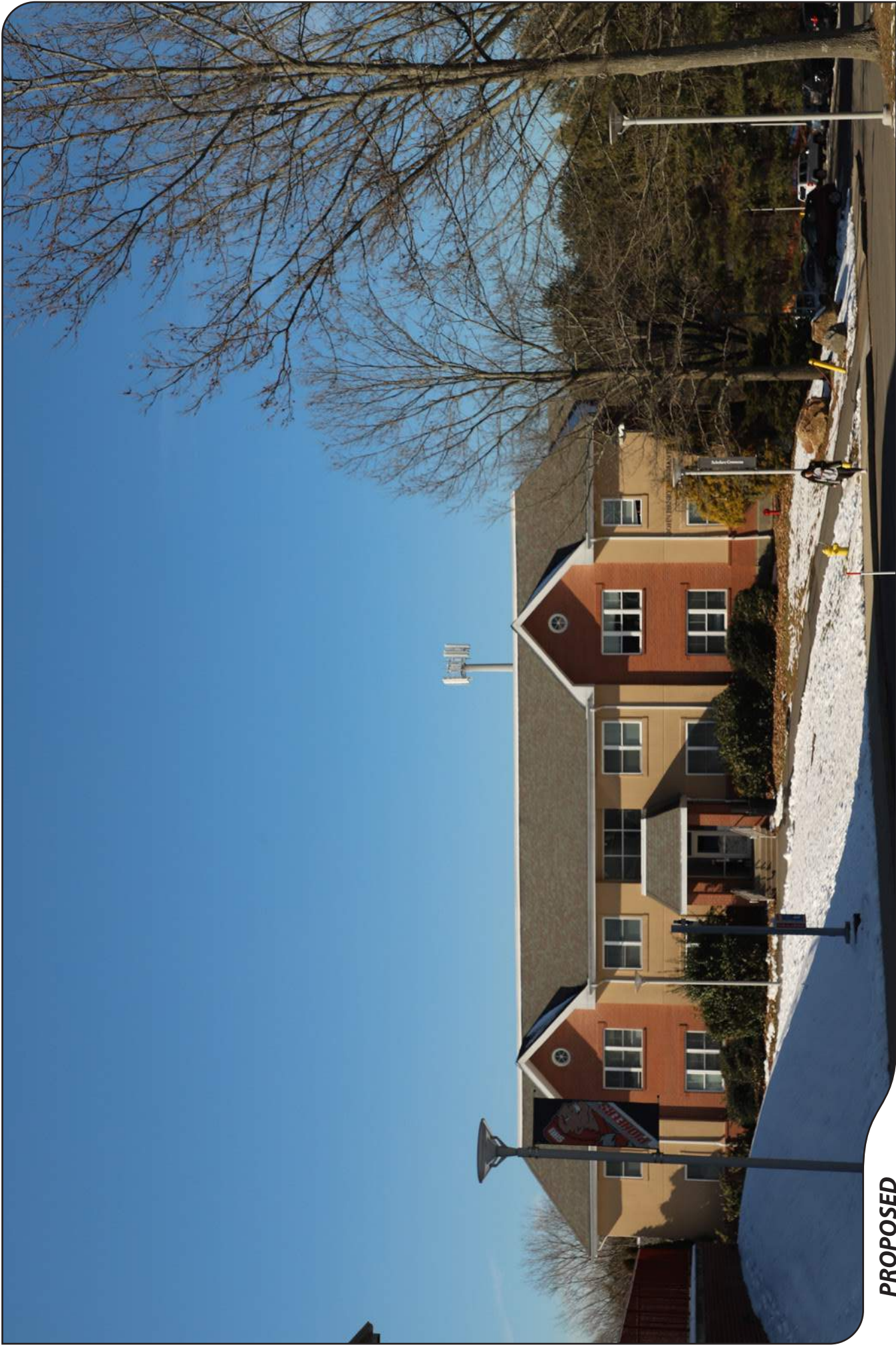
DISTANCE TO SITE

+/- 0.12 MILE

VISIBILITY

YEAR ROUND





**PROPOSED**

PHOTO	LOCATION	ORIENTATION	DISTANCE TO SITE	VISIBILITY
25	SACRED HEART UNIVERSITY	WEST	+/- 0.12 MILE	YEAR ROUND



PHOTOGRAPHED ON 1/24/2020

**EXISTING**

PHOTO

26

LOCATION

STEVENSON ROAD

ORIENTATION

SOUTHEAST

DISTANCE TO SITE

+/- 0.29 MILE

VISIBILITY

SEASONAL





**PROPOSED**

PHOTO	LOCATION	ORIENTATION	DISTANCE TO SITE	VISIBILITY
26	STEVENSON ROAD	SOUTHEAST	+/- 0.29 MILE	SEASONAL



PHOTOGRAPHED ON 1/24/2020

**EXISTING**

PHOTO	LOCATION	ORIENTATION	DISTANCE TO SITE	VISIBILITY
27	EASTON TURNPIKE	NORTHEAST	+/- 0.32 MILE	YEAR ROUND



ALL-POINTS  
TECHNOLOGY CORPORATION





**PROPOSED**

PHOTO

27

LOCATION

**EASTON TURNPIKE**

ORIENTATION

**NORTHEAST**

DISTANCE TO SITE

**+/- 0.32 MILE**

VISIBILITY

**YEAR ROUND**



PHOTOGRAPHED ON 1/24/2020

**EXISTING**

PHOTO

28

LOCATION

FEDERAL STREET

ORIENTATION

EAST

DISTANCETO SITE

+/- 0.31 MILE

VISIBILITY

SEASONAL



ALL-POINTS  
TECHNOLOGY CORPORATION







**PROPOSED**

PHOTO  
**28**

LOCATION  
**FEDERAL STREET**

ORIENTATION  
**EAST**

DISTANCE TO SITE  
**+/- 0.31 MILE**

VISIBILITY  
**SEASONAL**



PHOTOGRAPHED ON 1/24/2020

**EXISTING**

PHOTO

29

LOCATION

CONGRESS STREET

ORIENTATION

NORTHEAST

DISTANCE TO SITE

+/- 0.37 MILE

VISIBILITY

YEAR ROUND





**PROPOSED**

PHOTO

29

LOCATION

CONGRESS STREET

ORIENTATION

NORTHEAST

DISTANCE TO SITE

+/- 0.37 MILE

VISIBILITY

YEAR ROUND



PHOTOGRAPHED ON 1/24/2020

**EXISTING**

PHOTO

30

LOCATION

CONGRESS STREET

ORIENTATION

NORTHEAST

DISTANCE TO SITE

+/- 0.40 MILE

VISIBILITY

NOT VISIBLE



PHOTOGRAPHED ON 1/24/2020

**EXISTING**

PHOTO	LOCATION	ORIENTATION	DISTANCE TO SITE	VISIBILITY
31	MOREHOUSE DRIVE OVERLOOKING MERRITT PARKWAY	NORTHEAST	+/- 1.04 MILES	NOT VISIBLE



ALL-POINTS  
TECHNOLOGY CORPORATION





PHOTOGRAPHED ON 1/24/2020

**EXISTING**

PHOTO	LOCATION	ORIENTATION	DISTANCE TO SITE	VISIBILITY
32	MOREHOUSE ROAD AT GOLF VIEW DRIVE	NORTHEAST	+/- 1.00 MILE	NOT VISIBLE





PHOTOGRAPHED ON 1/24/2020

**EXISTING**

PHOTO

33

LOCATION

**RIDGEWAY DRIVE**

ORIENTATION

**SOUTHEAST**

DISTANCE TO SITE

**+/- 1.47 MILES**

VISIBILITY

**NOT VISIBLE**



PHOTOGRAPHED ON 1/24/2020

**EXISTING**

PHOTO

34

LOCATION

**SOUTH PARK AVENUE ADJACENT TO EASTON RESERVOIR DAM**

ORIENTATION

**SOUTHEAST**

DISTANCE TO SITE

**+/- 1.85 MILES**

VISIBILITY

**NOT VISIBLE**







PHOTOGRAPHED ON 1/24/2020

**EXISTING**

PHOTO

35

LOCATION

TUCKAHOE ROAD

ORIENTATION

SOUTH

DISTANCE TO SITE

+/- 1.26 MILES

VISIBILITY

NOT VISIBLE





PHOTOGRAPHED ON 1/24/2020

**EXISTING**

PHOTO

36

LOCATION

SCATTERGOOD CIRCLE AT MADISON AVENUE

ORIENTATION

SOUTHWEST

DISTANCE TO SITE

+/- 1.85 MILES

VISIBILITY

NOT VISIBLE





PHOTOGRAPHED ON 1/24/2020

**EXISTING**

PHOTO

37

LOCATION

HITCHING POST LANE AT FIELDSTONE COURT

ORIENTATION

SOUTHWEST

DISTANCETO SITE

+/- 0.95 MILE

VISIBILITY

NOT VISIBLE





PHOTOGRAPHED ON 1/24/2020

**EXISTING**

PHOTO

38

LOCATION

**ROYCE PLACE AT MADISON AVENUE**

ORIENTATION

**SOUTHWEST**

DISTANCETO SITE

**+/- 0.91 MILE**

VISIBILITY

**NOT VISIBLE**





PHOTOGRAPHED ON 1/24/2020

**EXISTING**

PHOTO	LOCATION	ORIENTATION	DISTANCE TO SITE	VISIBILITY
39	PARK AVENUE	NORTHWEST	+/- 1.89 MILES	NOT VISIBLE



ALL-POINTS  
TECHNOLOGY CORPORATION





PHOTOGRAPHED ON 1/24/2020

**EXISTING**

PHOTO	LOCATION	ORIENTATION	DISTANCE TO SITE	VISIBILITY
40	LOLA STREET AT STRATFIELD ROAD	NORTHWEST	+/- 1.66 MILES	NOT VISIBLE





PHOTOGRAPHED ON 1/24/2020

**EXISTING**

PHOTO

41

LOCATION

HIGHLAND LANE

ORIENTATION

NORTH

DISTANCETO SITE

+/- 1.20 MILES

VISIBILITY

NOT VISIBLE



ALL-POINTS  
TECHNOLOGY CORPORATION





PHOTOGRAPHED ON 1/24/2020  
35mm Focal Length

**EXISTING**

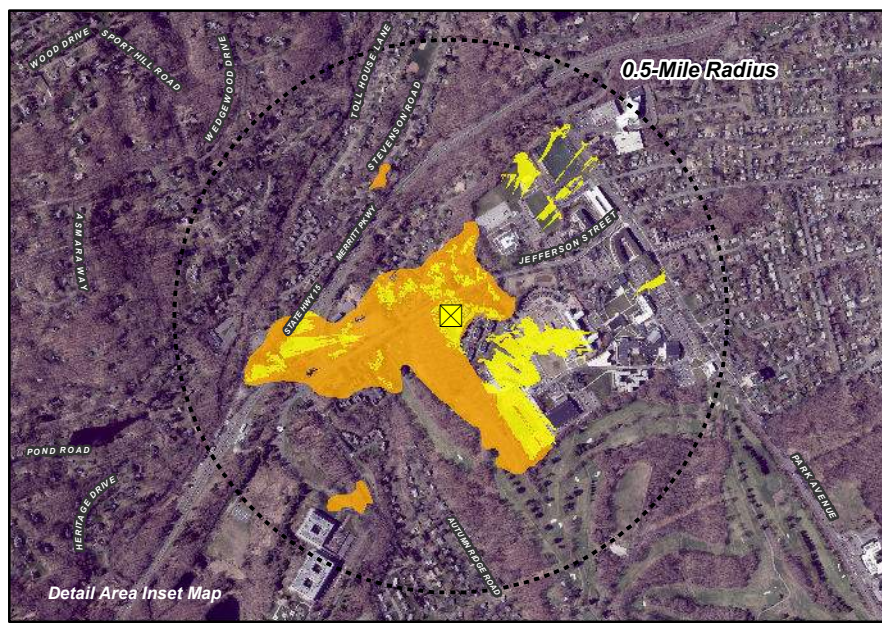
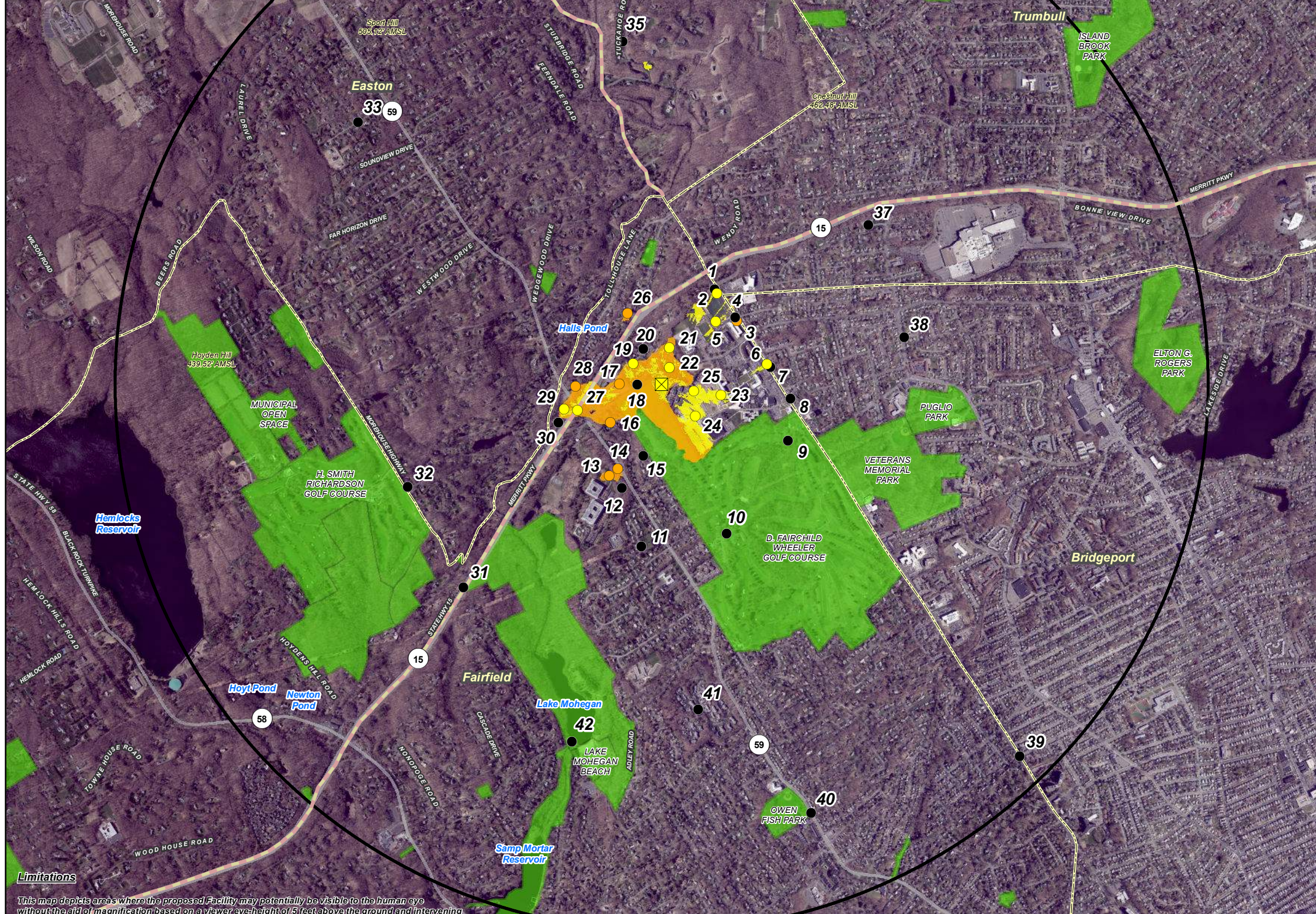
PHOTO	LOCATION	ORIENTATION	DISTANCE TO SITE	VISIBILITY
42	MOREHOUSE HIGHWAY AT LAKE MOHEGAN	NORTHEAST	+/- 1.35 MILES	NOT VISIBLE







Statewide and Regional Overview Map



Detail Area Inset Map

## Viewshed Analysis Map

Proposed Wireless Telecommunications Facility  
 Plattville RELO CT  
 5151 Park Avenue  
 Fairfield, Connecticut

Proposed facility height is 130 feet AGL.  
 Forest canopy height is derived from LIDAR data.  
 Study area encompasses a two-mile radius and includes 8,042 acres.  
 Map information field verified by APT on January 24, 2020  
 Base Map Source: 2019 Aerial Photograph (CTECO)  
 Map Date: February 2020

### Legend

- Proposed Site
- Study Area (2-Mile Radius)
- Not Visible
- Seasonal
- Year-Round Visibility
- Predicted Year-Round Visibility (26 Acres)
- Areas of Potential Seasonal Visibility (49 Acres)
- Municipal Boundary
- Trail
- Scenic Highway
- DEEP Boat Launches
- Municipal and Private Open Space Property
- State Forest/Park
- Protected Open Space Property
- Federal
- Land Trust
- Municipal
- Private
- State

### Data Sources:

**Physical Geography / Background Data**  
 A digital surface model (DSM) was created from the State of Connecticut 2016 LIDAR LAS data points. The DSM captures the natural and built features on the Earth's surface.

Municipal Open Space, State Recreation Areas, Trails, County Recreation Areas, and Town Boundary data obtained from CT DEEP. Scenic Roads: CTDOT State Scenic Highways (2015); Municipal Scenic Roads (compiled by APT)

**Dedicated Open Space & Recreation Areas**  
 Connecticut Department of Energy and Environmental Protection (DEEP): DEEP Property (May 2007; Federal Open Space (1997); Municipal and Private Open Space (1997); DEEP Boat Launches (1994)  
 Connecticut Forest & Parks Association, Connecticut Walk Books East & West

### Other

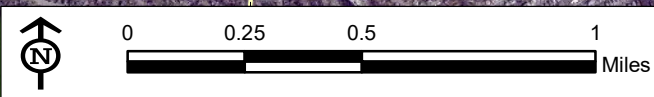
CTDOT Scenic Strips (based on Department of Transportation data)

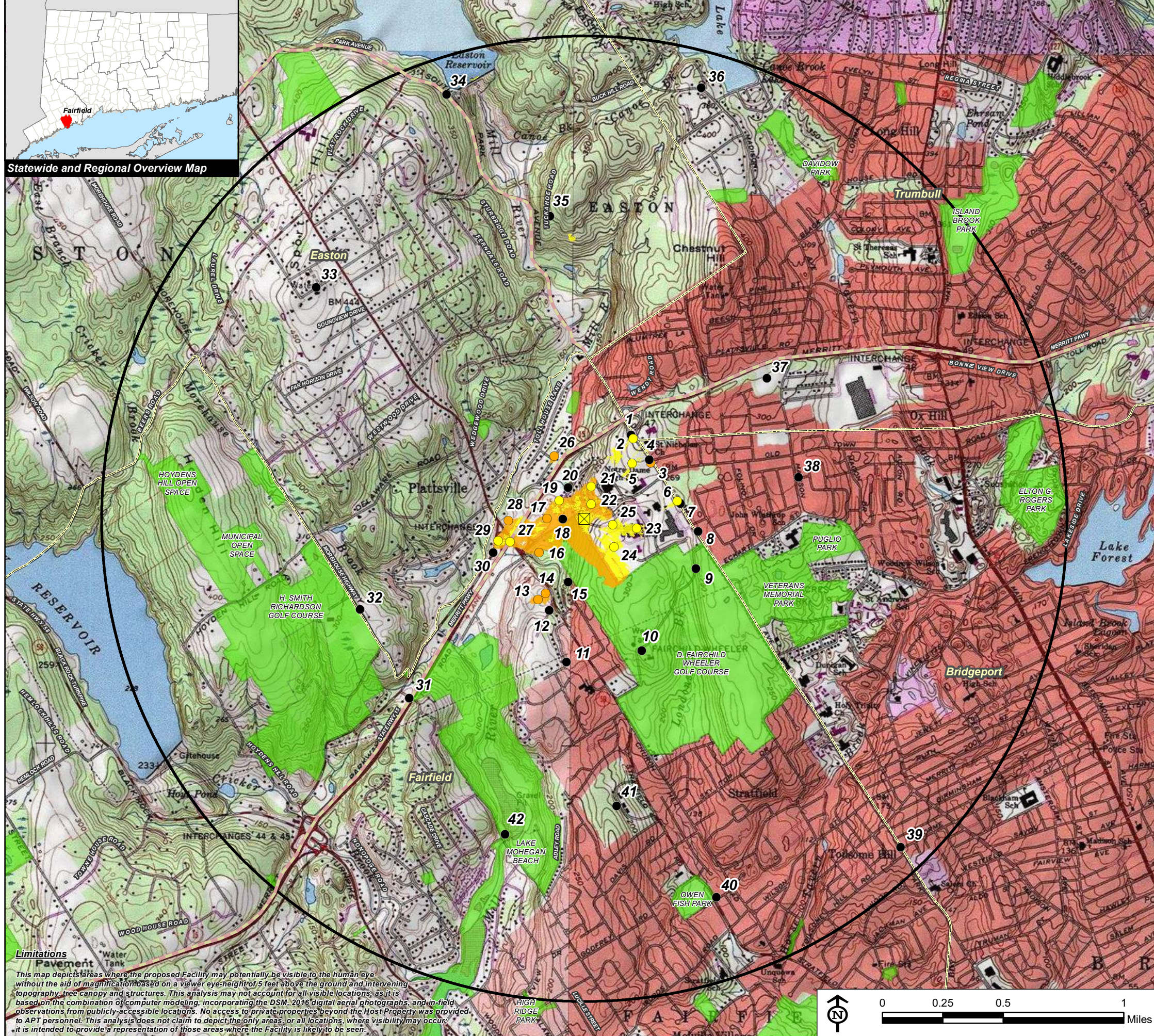
### Notes

\*\*Not all the sources listed above appear on the Viewshed Maps. Only those features within the scale of the graphic are shown.

### Limitations

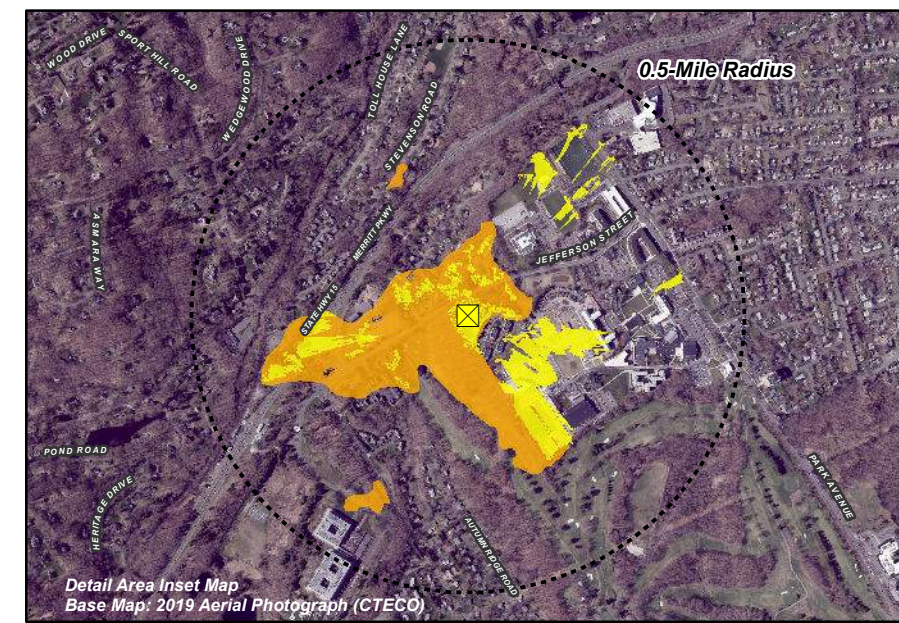
This map depicts areas where the proposed Facility may potentially be visible to the human eye without the aid of magnification based on a viewer eye-height of 5 feet above the ground and intervening topography, tree canopy and structures. This analysis may not account for all visible locations, as it is based on the combination of computer modeling, incorporating the DSM, 2016 digital aerial photographs, and in-field observations from publicly-accessible locations. No access to private properties beyond the Host Property was provided to APT personnel. This analysis does not claim to depict the only areas, or all locations, where visibility may occur. It is intended to provide a representation of those areas where the Facility is likely to be seen.





Statewide and Regional Overview Map

**Limitations**  
 This map depicts areas where the proposed Facility may potentially be visible to the human eye without the aid of magnification based on a viewer eye-height of 5 feet above the ground and intervening topography, tree canopy and structures. This analysis may not account for all visible locations, as it is based on the combination of computer modeling, incorporating the DSM, 2016 digital aerial photographs, and in-field observations from publicly-accessible locations. No access to private properties beyond the Host Property was provided to APT personnel. This analysis does not claim to depict the only areas, or all locations, where visibility may occur; it is intended to provide a representation of those areas where the Facility is likely to be seen.



Detail Area Inset Map  
 Base Map: 2019 Aerial Photograph (CTECO)

## Viewshed Analysis Map

Proposed Wireless Telecommunications Facility  
 Plattville RELO CT  
 5151 Park Avenue  
 Fairfield, Connecticut

Proposed facility height is 130 feet AGL.  
 Forest canopy height is derived from LIDAR data.  
 Study area encompasses a two-mile radius and includes 8,042 acres.  
 Map information field verified by APT on January 24, 2020  
 Base Map Source: USGS 7.5 Minute Topographic Quadrangle Maps, Botsford, CT (1984), Bridgeport, CT (1984), Long Hill, CT (1984) and Westport, CT (1975)  
 Map Date: February 2020

- Legend**
- Proposed Site
  - Study Area (2-Mile Radius)
  - Not Visible
  - Seasonal
  - Year-Round Visibility
  - Predicted Year-Round Visibility (26 Acres)
  - Areas of Potential Seasonal Visibility (49 Acres)
  - Municipal Boundary
  - Trail
  - Scenic Highway
  - DEEP Boat Launches
  - Municipal and Private Open Space Property
  - State Forest/Park
  - Protected Open Space Property**
  - Federal
  - Land Trust
  - Municipal
  - Private
  - State

**Data Sources:**  
**Physical Geography / Background Data**  
 A digital surface model (DSM) was created from the State of Connecticut 2016 LIDAR LAS data points. The DSM captures the natural and built features on the Earth's surface.  
 Municipal Open Space, State Recreation Areas, Trails, County Recreation Areas, and Town Boundary data obtained from CT DEEP. Scenic Roads: CTDOT State Scenic Highways (2015); Municipal Scenic Roads (compiled by APT)  
**Dedicated Open Space & Recreation Areas**  
 Connecticut Department of Energy and Environmental Protection (DEEP): DEEP Property (May 2007; Federal Open Space (1997); Municipal and Private Open Space (1997); DEEP Boat Launches (1994)  
 Connecticut Forest & Parks Association, Connecticut Walk Books East & West

**Other**  
 CTDOT Scenic Strips (based on Department of Transportation data)  
**Notes**  
 \*\*Not all the sources listed above appear on the Viewshed Maps. Only those features within the scale of the graphic are shown.

