

SAMSUNG

Dual-Band Radio Unit 700/850MHz (B13/B5) RFV01U-D2A

Samsung's RFV01U-D2A is a compact remote Radio Unit (RU) designed for deployments that require flexibility in installation and rapid onlining, without compromising on coverage, capacity or operational expenses.



The RFV01U-D2A RU targets dual-band support across Band 13 (700MHz) and Band 5 (850MHz), making it an ideal product for broad coverage footprints across multiple common low-end, long-range frequencies.

The RU handles all Radio Frequency (RF) processing in a single, compact unit, and is designed to interface via CPRI with Samsung's CDU baseband offerings, in both distributed- and central-RAN configurations.

In addition to its minimal footprint and ease of installation, the RU is also designed to reduce cost of ownership through its integrated spectrum analyzer, which allows for remote RF monitoring, greatly reducing the need for on-site maintenance visits.

Features and Benefits

- Dual-band support for broad frequency coverage
- Minimal footprint reduces site costs
- Rapid, easy installation
- Flexibly deployable in any location
- Remote RF monitoring capability
- Convection cooled, silent operation

Key Technical Specifications

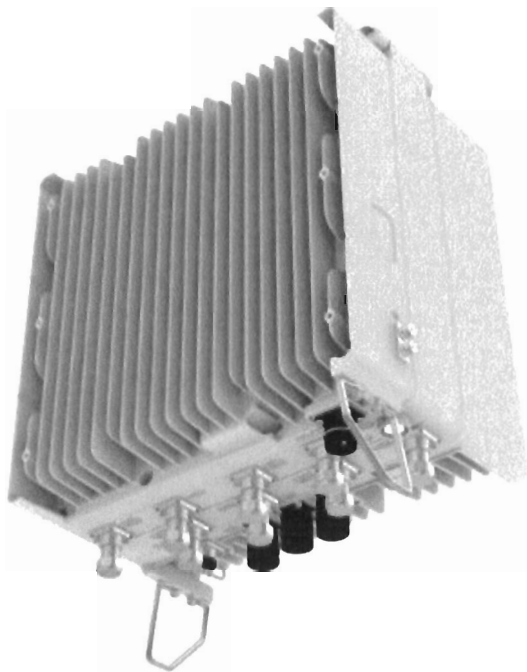
Duplex Type: FDD
Operating Frequencies:
 B13: DL(746-756MHz)/UL(777-787MHz)
 B5: DL(869-894MHz)/UL(824-849MHz)
Instantaneous Bandwidth: 10MHz(B13) + 25MHz(B5)
RF Chain: 4T4R/2T4R/2T2R
Output Power: Total 320W
DU-RU Interface: CPRI (10Gbps)
Dimensions: 380 x 380 x 207mm (29.9L)
Weight: 31.9kg
Input Power: -48V DC
Operating Temp.: -40 - 55°(w/o solar load)
Cooling: Natural convection

SAMSUNG

Dual-Band Radio Unit AWS/PCS (B66/B2)

RFV01U-D1A

Samsung's RFV01U-D1A is a compact remote Radio Unit (RU) designed for deployments that require flexibility in installation and rapid onlining, without compromising on coverage, capacity or operational expenses.



The RFV01U-D1A RU targets dual-band support across Band 66 (AWS) and Band 2 (PCS), making it an ideal product for broad coverage footprints across multiple common mid-range frequencies.

The RU handles all Radio Frequency (RF) processing in a single, compact unit, and is designed to interface via CPRI with Samsung's CDU baseband offerings, in both distributed- and central-RAN configurations.

In addition to its minimal footprint and ease of installation, the RU is also designed to reduce cost of ownership through its integrated spectrum analyzer, which allows for remote RF monitoring, greatly reducing the need for on-site maintenance visits.

Features and Benefits

- Dual-band support for broad frequency coverage
- Minimal footprint reduces site costs
- Rapid, easy installation
- Flexibly deployable in any location
- Remote RF monitoring capability
- Convection cooled, silent operation
- Built-in Broadcast Auxiliary Services (BAS) filter ensures compliant AWS operation without impacting footprint

Key Technical Specifications

Duplex Type: FDD

Operating Frequencies:

B66: DL(2,110-2,180MHz)/UL(1,710-1,780MHz)

B2: DL(1,930-1,990MHz)/UL(1,850-1,910MHz)

Instantaneous Bandwidth:

70MHz(B66) + 60MHz(B2)

RF Chain: 4T4R/2T4R/2T2R

Output Power: Total 320W

DU-RU Interface: CPRI (10Gbps)

Dimensions: 380 x 380 x 255mm (36.8L)

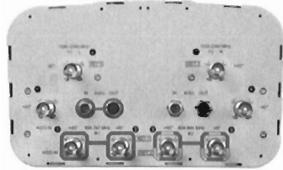
Weight: 38.3kg

Input Power: -48V DC

Operating Temp.: -40 - 55°(w/o solar load)

Cooling: Natural convection

JAHH-65B-R3B



8-port sector antenna, 2x 698–787, 2x 824–894 and 4x 1695–2360 MHz, 65° HPBW, 3x RET and low bands have diplexers. Internal SBT's on first LB(Port 1) and first HB(Port 5).

- Internal SBT on low and high band allow remote RET control from the radio over the RF jumper cable
- One RET for 700MHz, one RET for 850MHz, and one RET for both high bands to ensure same tilt level for 4x Rx or 4x MIMO
- Internal filter on low band and interleaved dipole technology providing for attractive, low wind load mechanical package
- Separate RS-485 RET input/output for low and high band

General Specifications

Antenna Type	Sector
Band	Multiband
Color	Light gray
Effective Projective Area (EPA), frontal	0.28 m ² 3.014 ft ²
Effective Projective Area (EPA), lateral	0.24 m ² 2.583 ft ²
Grounding Type	RF connector body grounded to reflector and mounting bracket
Performance Note	Outdoor usage Wind loading figures are validated by wind tunnel measurements described in white paper WP-112534-EN
Radome Material	Fiberglass, UV resistant
Radiator Material	Aluminum Low loss circuit board
Reflector Material	Aluminum
RF Connector Interface	4.3-10 Female
RF Connector Location	Bottom
RF Connector Quantity, high band	4
RF Connector Quantity, low band	4
RF Connector Quantity, total	8

Remote Electrical Tilt (RET) Information, General

RET Interface	8-pin DIN Female 8-pin DIN Male
RET Interface, quantity	2 female 2 male

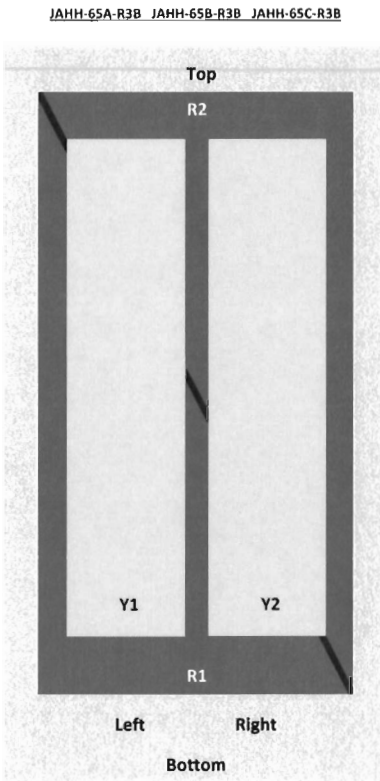
Dimensions

Width	350 mm 13.78 in
--------------	-------------------

JAHH-65B-R3B

Length 1828 mm | 71.969 in
 Depth 208 mm | 8.189 in

Array Layout



Array	Freq (MHz)	Coms	RET (SRET)	AISG RET UID
R1	698-798	1-2	1	ANXXXXXXXXXXXXX1
R2	824-894	3-4	- 2	ANXXXXXXXXXXXXX2
Y1	1695-2360	5-6	3	ANXXXXXXXXXXXXX3
Y2	1695-2360	7-8		

View from the front of the antenna
 (Sizes of colored boxes are not true depictions of array sizes)

Electrical Specifications

Impedance 50 ohm
 Operating Frequency Band 1695 – 2360 MHz | 698 – 787 MHz | 824 – 894 MHz
 Polarization $\pm 45^\circ$

Remote Electrical Tilt (RET) Information, Electrical

Protocol 3GPP/AISG 2.0 (Single RET)
 Power Consumption, idle state, maximum 2 W

JAHH-65B-R3B

Power Consumption, normal conditions, maximum	13 W
Input Voltage	10–30 Vdc
Internal Bias Tee	Port 1 Port 5
Internal RET	High band (1) Low band (2)

Electrical Specifications

Frequency Band, MHz	698–787	824–894	1695–1880	1850–1990	1920–2200	2300–2360
Gain, dBi	14.5	15.8	18	18.4	18.5	18.8
Beamwidth, Horizontal, degrees	67	65	63	63	65	68
Beamwidth, Vertical, degrees	12.4	10.5	5.7	5.2	4.9	4.4
Beam Tilt, degrees	2–14	2–14	0–10	0–10	0–10	0–10
USLS (First Lobe), dB	18	18	20	20	21	23
Front-to-Back Ratio at 180°, dB	32	34	31	35	36	38
Isolation, Cross Polarization, dB	25	25	25	25	25	25
Isolation, Inter-band, dB	30	30	30	30	30	30
VSWR Return loss, dB	1.5 14.0	1.5 14.0	1.5 14.0	1.5 14.0	1.5 14.0	1.5 14.0
PIM, 3rd Order, 2 x 20 W, dBc	-153	-153	-153	-153	-153	-153
Input Power per Port at 50° C, maximum, watts	200	200	300	300	300	250

Electrical Specifications, BASTA

Frequency Band, MHz	698–787	824–894	1695–1880	1850–1990	1920–2200	2300–2360
Gain by all Beam Tilts, average, dBi	14.3	14.9	17.6	18.1	18.2	18.5
Gain by all Beam Tilts Tolerance, dB	±0.3	±0.5	±0.6	±0.4	±0.5	±0.6
Gain by Beam Tilt, average, dBi	2° 14.3 8° 14.3 14° 14.3	2° 15.0 8° 14.9 14° 15.4	0° 17.2 5° 17.6 10° 17.6	0° 17.6 5° 18.2 10° 18.2	0° 17.7 5° 18.3 10° 18.3	0° 17.9 5° 18.7 10° 18.7
Beamwidth, Horizontal Tolerance, degrees	±1.2	±1.4	±4	±2.4	±2.9	±2.7
Beamwidth, Vertical Tolerance, degrees	±0.9	±0.5	±0.3	±0.2	±0.3	±0.1
USLS, beampeak to 20° above beampeak, dB	18	17	17	18	19	18
Front-to-Back Total Power at 180° ± 30°, dB	25	24	26	29	27	29
CPR at Boresight, dB	22	23	20	21	21	24

JAHH-65B-R3B

CPR at Sector, dB 11 12 11 11 11 8

Mechanical Specifications

Wind Loading at Velocity, frontal 301.0 N @ 150 km/h | 67.7 lbf @ 150 km/h
Wind Loading at Velocity, lateral 254.0 N @ 150 km/h | 57.1 lbf @ 150 km/h
Wind Loading at Velocity, maximum 143.4 lbf @ 150 km/h | 638.0 N @ 150 km/h
Wind Speed, maximum 241 km/h | 149.75 mph

Packaging and Weights

Width, packed 456 mm | 17.953 in
Depth, packed 357 mm | 14.055 in
Length, packed 1975 mm | 77.756 in
Net Weight, without mounting kit 29.2 kg | 64.375 lb
Weight, gross 42.5 kg | 93.696 lb

Regulatory Compliance/Certifications

Agency	Classification
CHINA-ROHS	Above maximum concentration value
ISO 9001:2015	Designed, manufactured and/or distributed under this quality management system
ROHS	Compliant/Exempted



Included Products

BSAMNT-3 — Wide Profile Antenna Downtilt Mounting Kit for 2.4 - 4.5 in (60 - 115 mm) OD round members. Kit contains one scissor top bracket set and one bottom bracket set.

* Footnotes

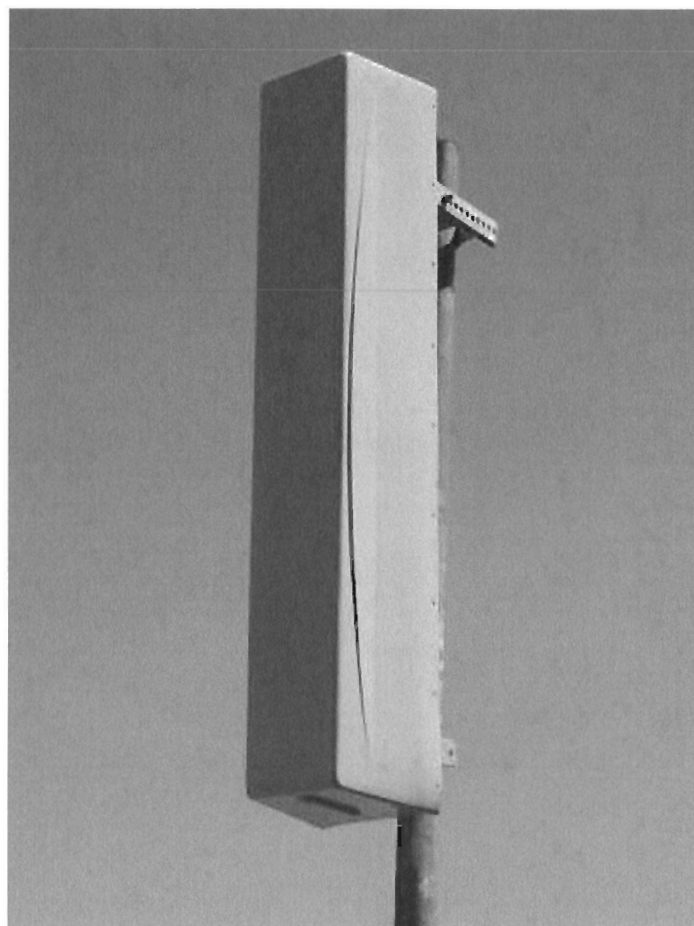
Performance Note Severe environmental conditions may degrade optimum performance

SC-E 6014 rev2

Enhanced 800 - 960 MHz log-periodic antenna

Features

- Small size
- Aesthetically pleasing
- Suitable for TDMA/CDMA/GSM/3G
- High return loss
- Low intermodulation
- High front-to-back ratio
- Outstanding performance over the entire band (800 - 960 MHz)
- Upper side-lobe suppression
- Rugged design
- Dramatically improved signal to interference performance



Electrical specifications

Frequency range:	800-960 MHz
Impedance:	50 ohm
Connector type:	7/16 Din
Return loss:	20 dB
Polarization:	Vertical
Gain:	14 dBd
Front-to-back ratio:	> 30 dB
Upper side-lobe suppression:	18 dB

Intermodulation (2x20W):	IM5	160 dB
	IM7/9	170 dB

Power rating:	500 W
H-plane (-3 dB point):	54 - 60°
V-plane (-3 dB point):	16 - 18°
Lightning protection:	DC grounded

Mechanical specifications

Overall height:	43 in	[1092 mm]
Width:	8.5 in	[216 mm]
Depth:	8 in	[203 mm]
Weight (excluding brackets):	15 lbs	[6.8 Kg]
Wind load measured up to:	150 mph	[240 Km/h]
Wind area (side of antenna):	2.54 sq. ft.	[0.24 sq.m]
Lateral thrust At 113 mph/ 180Km/h (worst case):	122 lbs	[577 N]

Materials

Radiating Elements:	Aluminum
Transformer (Power distribution)	Ceramic PCB
Chassis:	Aluminum
Radome:	Grey Fiberglass/PVC
Tilt-bracket:	Hot dip galvanized steel
Mounting bolts:	Stainless steel

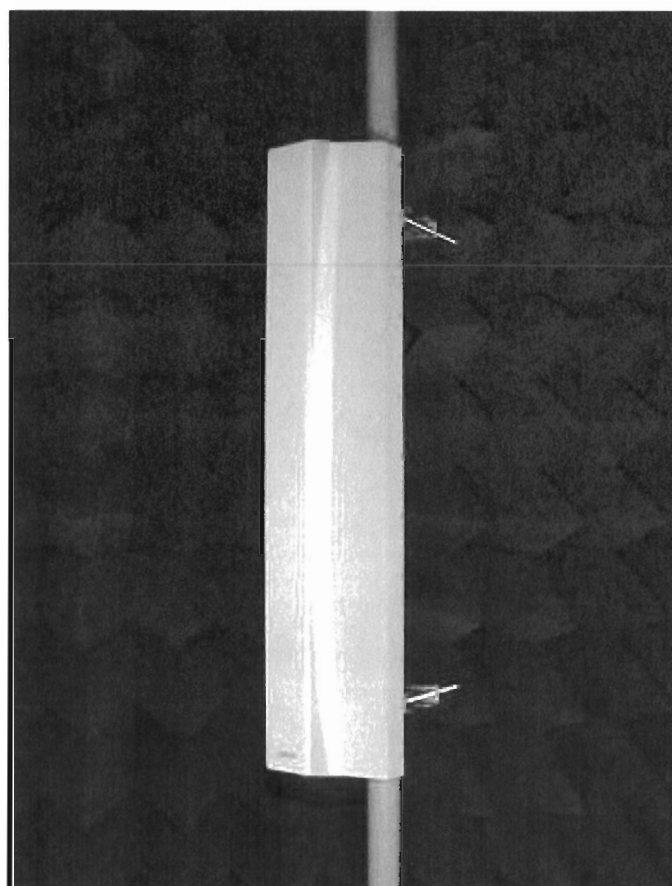
The SC-E 6014 rev2 is made in the U.S.A.

SC 9012 rev2

800 - 960 MHz log-periodic antenna

Features

- Small size
- Aesthetically pleasing
- Suitable for TDMA/CDMA/GSM/3G
- High return loss
- Low intermodulation
- High front-to-back ratio
- Outstanding performance over the entire band (800 - 960 MHz)
- Upper side-lobe suppression
- Rugged design
- Dramatically improved signal to interference performance



Electrical specifications

Frequency range:	800-960 MHz
Impedance:	50 ohm
Connector type:	7/16 Din
Return loss:	20 dB
Polarization:	Vertical
Gain:	12 dBd
Front-to-back ratio:	> 30 dB
Upper side-lobe suppression:	18 dB

Intermodulation (2x20W):	IM5 160 dB
	IM7/9 170 dB

Power rating:	500 W
H-plane (-3 dB point):	85 - 93°
V-plane (-3 dB point):	17 - 19°
Lightning protection:	DC grounded

Mechanical specifications

Overall height:	43 in	[1092 mm]
Width:	6.5 in	[165 mm]
Depth:	8 in	[203 mm]
Weight (excluding brackets):	10 lbs	[4.54 Kg]
Wind load measured up to:	150 mph	[240 Km/h]
Wind area (side of antenna):	2.3 sq. ft.	[0.22 sq.m]
Lateral thrust At 113 mph/ 180Km/h (worst case):	122 lbs	[543 N]

Materials

Radiating Elements:	Aluminum
Transformer (Power distribution)	Ceramic PCB
Chassis:	Aluminum
Radome:	Grey Fiberglass/PVC
Tilt-bracket:	Hot dip galvanized steel
Mounting bolts:	Stainless steel

The SC 9012 rev2 is made in the U.S.A.



**EPA-Certified for Stationary
Emergency Applications**

Ratings Range

Standby:		60 Hz
	kW	30
	kVA	30-38



The Kohler® Advantage

- High Quality Power**
 Kohler generators provide advanced voltage and frequency regulation along with ultra-low levels of harmonic distortion for excellent generator power quality to protect your valuable electronics.
- Extraordinary Reliability**
 Kohler is known for extraordinary reliability and performance and backs that up with a premium five-year or 2000 hour limited warranty.
- All-Aluminum Sound Enclosure**
 Durable aluminum sound-attenuating enclosure.

Generator Set Ratings

Alternator	Voltage	Ph	Hz	Natural Gas 130°C Rise		LP Gas 130°C Rise	
				Standby Rating kW/kVA	Amps	Standby Rating kW/kVA	Amps
4D8.3	120/208	3	60	30/38	106	30/38	106
	127/220	3	60	30/38	100	30/38	100
	120/240	3	60	30/38	92	30/38	92
	120/240	1	60	30/30	125	30/30	125
	139/240	3	60	30/38	92	30/38	92
	220/380	3	60	30/38	58	30/38	58
	277/480	3	60	30/38	46	30/38	46
347/600	3	60	30/38	37	30/38	37	
4P7BX	120/208	3	60	30/38	106	30/38	106
	127/220	3	60	30/38	100	30/38	100
	120/240	3	60	30/38	92	30/38	92
	120/240	1	60	30/30	125	30/30	125
	139/240	3	60	30/38	92	30/38	92
	220/380	3	60	30/38	58	30/38	58
277/480	3	60	30/38	46	30/38	46	
4E8.3	120/240	1	60	30/30	125	30/30	125
4Q7BX	120/240	1	60	30/30	125	30/30	125

RATINGS: All three-phase units are rated at 0.8 power factor. All single-phase units are rated at 1.0 power factor. **Standby Ratings:** The standby rating is applicable to varying loads for the duration of a power outage. There is no overload capability for this rating. Ratings are in accordance with ISO-8528-1 and ISO-3046-1. Obtain technical information bulletin (TIB-101) for ratings guidelines, complete ratings definitions, and site condition derates. The generator set manufacturer reserves the right to change the design or specifications without notice and without any obligation or liability whatsoever.

Standard Features

- Kohler Co. provides one-source responsibility for the generating system and accessories.
- The generator set and its components are prototype-tested, factory-built, and production-tested.
- The generator set accepts rated load in one step.
- A five-year/2000 hour limited warranty covers all generator set systems and components. A five-year extended comprehensive limited warranty is also available.
- Engine Features
 - Powerful and reliable 2.2 L turbocharged liquid-cooled engine
 - Electronic engine management system.
 - Simple field conversion between natural gas and LPG fuels while maintaining emission certification.
- Innovative Cooling System
 - Electronically controlled fan speeds minimize generator set sound signature.
- Alternator features:
 - Kohler's wound field excitation system with its unique PowerBoost™ design delivers great voltage response and short-circuit capability.
 - The unique Fast-Response® X excitation system delivers excellent voltage response and short-circuit capability using a rare-earth, permanent magnet (PM)-excited alternator.
 - The brushless, rotating-field alternator has broadrange reconnectability.
- Kohler designed controller for one-source system integration and remote communication. See Controller on page 3.
- Certifications
 - The generator set engine is certified by the Environmental Protection Agency (EPA) to conform to the New Source Performance Standard (NSPS) for stationary spark-ignited emissions.
 - UL 2200/cUL listing is available.
 - The generator set meets NFPA 110, Level 1, when equipped with the necessary accessories and installed per NFPA standards.
 - CSA certification is available.
 - Accepted by the Massachusetts Board of Registration of Plumbers and Gas Fitters.
- Approved for stationary standby applications in locations served by a reliable utility source.

Alternator Specifications

Specifications	Alternator
Manufacturer	Kohler
Exciter type	Brushless, Wound-Field
Leads: quantity, type	
4D	12, Reconnectable
4E	4, 110- 120/220- 240 V
4PX	12, Reconnectable
4QX	4, 110- 120/220- 240 V
Voltage regulator	Solid State, Volts/Hz
Insulation:	NEMA MG1
Material	Class H
Temperature rise	130°C, Standby
Bearing: quantity, type	1, Sealed
Coupling	Flexible Disc
Amortisseur windings	Full
Voltage regulation, no-load to full-load	Controller Dependent
One-step load acceptance	100% of Rating
Unbalanced load capability	100% of Rated Standby Current
Peak motor starting kVA:	(35% dip for voltages below)
480 V 4D8.3 (12 lead)	120
240 V 4E8.3 (4 lead)	74
480 V 4P7BX (12 lead)	180
240 V 4Q7BX (4 lead)	113

- NEMA MG1, IEEE, and ANSI standards compliance for temperature rise and motor starting.
- Sustained short-circuit current enabling downstream circuit breakers to trip without collapsing the alternator field.
- Self-ventilated and drip-proof construction.
- Windings are vacuum-impregnated with epoxy varnish for dependability and long life.
- Superior voltage waveform from a two-thirds pitch stator and skewed rotor.

Application Data

Engine

Engine Specifications	
Manufacturer	Kohler
Engine: model, type	KG2204T, 2.2 L, 4-Cycle Turbocharged
Cylinder arrangement	In-line 4
Displacement, L (cu. in.)	2.2 (134.25)
Bore and stroke, mm (in.)	91 x 86 (3.5 x 3.4)
Compression ratio	10.5:1
Piston speed, m/min. (ft./min.)	340 (1016)
Main bearings: quantity, type	5, plain alloy steel
Rated rpm	1800
Max power at rated RPM, kW (HP)	
LPG	47.8 (64.1)
Natural Gas	47.6 (63.9)
Cylinder head material	Cast Iron
Piston type and material	High Silicon Aluminum
Crankshaft material	Nodular Iron
Valve (exhaust) material	Forged Steel
Governor type	Electronic
Frequency regulation, no-load to full-load	Isochronous
Frequency regulation, steady state	±1.0%
Frequency	Fixed
Air cleaner type, all models	Dry

Engine Electrical

Engine Electrical System	
Ignition system	Electronic
Battery charging alternator:	
Ground (negative/positive)	Negative
Volts (DC)	14
Ampere rating	90
Starter motor rated voltage (DC)	12
Battery, recommended cold cranking amps (CCA):	
Qty., rating for - 18°C (0°F)	One, 630
Battery voltage (DC)	12
Battery group size	24

Exhaust

Exhaust System	
Exhaust manifold type	Dry
Exhaust temperature at rated kW, dry exhaust, °C (°F)	610 (1130)
Maximum allowable back pressure, kPa (in. Hg)	7.5 (2.2)

Fuel

Fuel System	
Fuel type	Natural Gas or LPG
Fuel supply line inlet	1 NPTF
Natural gas fuel supply pressure, kPa (in. H ₂ O)	1.7- 2.7 (7-11)
LPG vapor withdrawal fuel supply pressure, kPa (in. H ₂ O)	1.7- 2.7 (7-11)

Fuel Composition Limits *	Nat. Gas	LP Gas
Methane, % by volume	90 min.	---
Ethane, % by volume	4.0 max.	---
Propane, % by volume	1.0 max.	85 min.
Propene, % by volume	0.1 max.	5.0 max.
C ₄ and higher, % by volume	0.3 max.	2.5 max.
Sulfur, ppm mass	25 max.	
Lower heating value, MJ/m ³ (Btu/ft ³), min.	33.2 (890)	84.2 (2260)

* Fuels with other compositions may be acceptable. If your fuel is outside the listed specifications, contact your local distributor for further analysis and advice.

Application Data

Lubrication

Lubricating System	
Type	Full Pressure
Oil pan capacity, L (qt.) ‡	4.2 (4.4)
Oil added during oil change (on average), L (qt.) ‡	3.3 (3.5)
Oil pan capacity with filter, L (qt.) ‡	8.5 (9.0)
Oil filter: quantity, type ‡	1, Cartridge
‡ Kohler recommends the use of Kohler Genuine oil and filters.	

Cooling

Radiator System	
Ambient temperature, °C (°F)	50 (122)
Engine jacket water capacity, L (gal.)	2.65 (0.7)
Radiator system capacity, including engine, L (gal.)	13.2 (3.5)
Engine jacket water flow, Lpm (gpm)	62 (16.4)
Heat rejected to cooling water at rated kW, dry exhaust, kW (Btu/min.)	22.5 (1280)
Water pump type	Centrifugal
Fan diameter, including blades, mm (in.)	qty. 3 @ 406 (16)
Fan power requirements (powered by engine battery charging alternator)	12 VDC, 18 amps each

Operation Requirements

Air Requirements	
Radiator-cooled cooling air, m ³ /min. (scfm)‡	51 (1800)
Combustion air, m ³ /min. (cfm)	1.6 (57)
Air over engine m ³ /min. (cfm)	25 (883)
† Air density = 1.20 kg/m ³ (0.075 lbf/ft ³)	

Fuel Consumption ‡	
Natural Gas, m ³ /hr. (cfh) at % load	Standby Ratings
100%	11.9 (421)
75%	10.0 (355)
50%	8.2 (289)
25%	6.3 (223)
0%	4.5 (158)

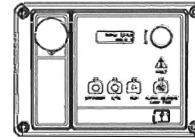
LP Gas, m ³ /hr. (cfh) at % load	Standby Ratings
100%	4.6 (164)
75%	3.7 (131)
50%	2.8 (99)
25%	1.9 (66)
0%	1.0 (34)

‡ Nominal fuel rating: Natural gas, 37 MJ/m³ (1000 Btu/ft.³)
LP vapor, 93 MJ/m³ (2500 Btu/ft.³)

LP vapor conversion factors:

8.58 ft.³ = 1 lb.
0.535 m³ = 1 kg.
36.39 ft.³ = 1 gal.

Controller



APM402 Controller

Provides advanced control, system monitoring, and system diagnostics for optimum performance and compatibility.

- Digital display and menu control provide easy local data access
- Measurements are selectable in metric or English units
- Remote communication thru a PC via network or serial configuration
- Controller supports Modbus[®] protocol
- Integrated hybrid voltage regulator with ±0.5% regulation
- Built-in alternator thermal overload protection
- NFPA 110 Level 1 capability

Refer to G6-161 for additional controller features and accessories.

Modbus[®] is a registered trademark of Schneider Electric.

Sound Enclosure

- Durable aluminum, sound-attenuating enclosure with quiet operation of 57 dB(A) log average @ 7 m (23 ft.) at no load.
- Internally mounted silencer.
- Fade-, scratch, and corrosion-resistant Kohler[®] Power Armor™ automotive-grade textured finish.
- Acoustic insulation that meets UL 94 HF1 flammability classification and repels moisture absorption.

Standard Features

- Alternator Protection
- Aluminum Sound Enclosure with Enclosed Silencer
- Battery Rack and Cables
- Flexible Fuel Line
- Gas Fuel System (includes fuel mixer, electronic secondary gas regulator, gas solenoid valve, and flexible fuel line between the engine and the skid-mounted fuel system components)
- Integral Vibration Isolation
- Local Emergency Stop Switch
- Low Fuel Pressure Switch (with NFPA fuel module)
- Oil Drain Extension
- Operation and Installation Literature
- Standard 5-Year Limited Warranty

Available Options

Approvals and Listings

- CSA Certified
- UL 2200 Listing

Controller

- 15-Relay Dry Contact Board
- Communication Products
- Input/Output Module (2 inputs, 5 outputs)
- Lockable Emergency Stop (lockout/tagout)
- Manual Key Switch
- Manual Speed Adjust
- Remote Annunciator Panel
- Remote Emergency Stop
- Run Relay

Enclosure Accessories

- Enclosure Doors for 291 kph (181 mph) Wind Load

Starting Aids*

- Block Heater, 110-120 V
- Block Heater, 220-240 V

Oil Pan Heater*

- Oil Pan Heater, 110-120 V
- Oil Pan Heater, 190-240 V

* One block heater or oil pan heater is required for ambient temperatures below 0°C (32°F). At temperatures below -18°C (0°F) installation of both heaters is required.

Electrical System

- Alternator Strip Heater
- Battery
- Battery Charger, 6 Amp
- Battery Charger, 10 Amp w/Alarms
- Battery Heater
- Temperature Compensation for 10 Amp Battery Charger

Miscellaneous

- Air Cleaner Restriction Indicator
- Certified Test Report
- Engine Fluids Added
- Maintenance Kit (filters, spark plugs, oil)
- Rated Power Factor Testing

Literature

- General Maintenance
- NFPA 110
- Overhaul
- Production

Warranty

- Optional Extended 5-Year/2000 Hour Comprehensive Limited Warranty

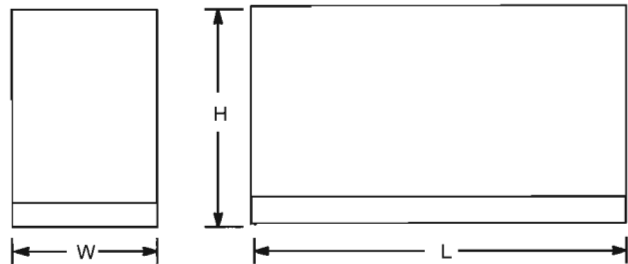
Other Options

- _____
- _____
- _____
- _____
- _____
- _____
- _____

Dimensions and Weights

Overall Size, L x W x H, mm (in.): 2280 x 830 x 1182
 (89.8 x 32.7 x 46.5)

Weight, with engine fluids, kg (lb.): 635 (1432)



NOTE: This drawing is provided for reference only and should not be used for planning. Contact your local distributor for more detailed information.

DISTRIBUTED BY: