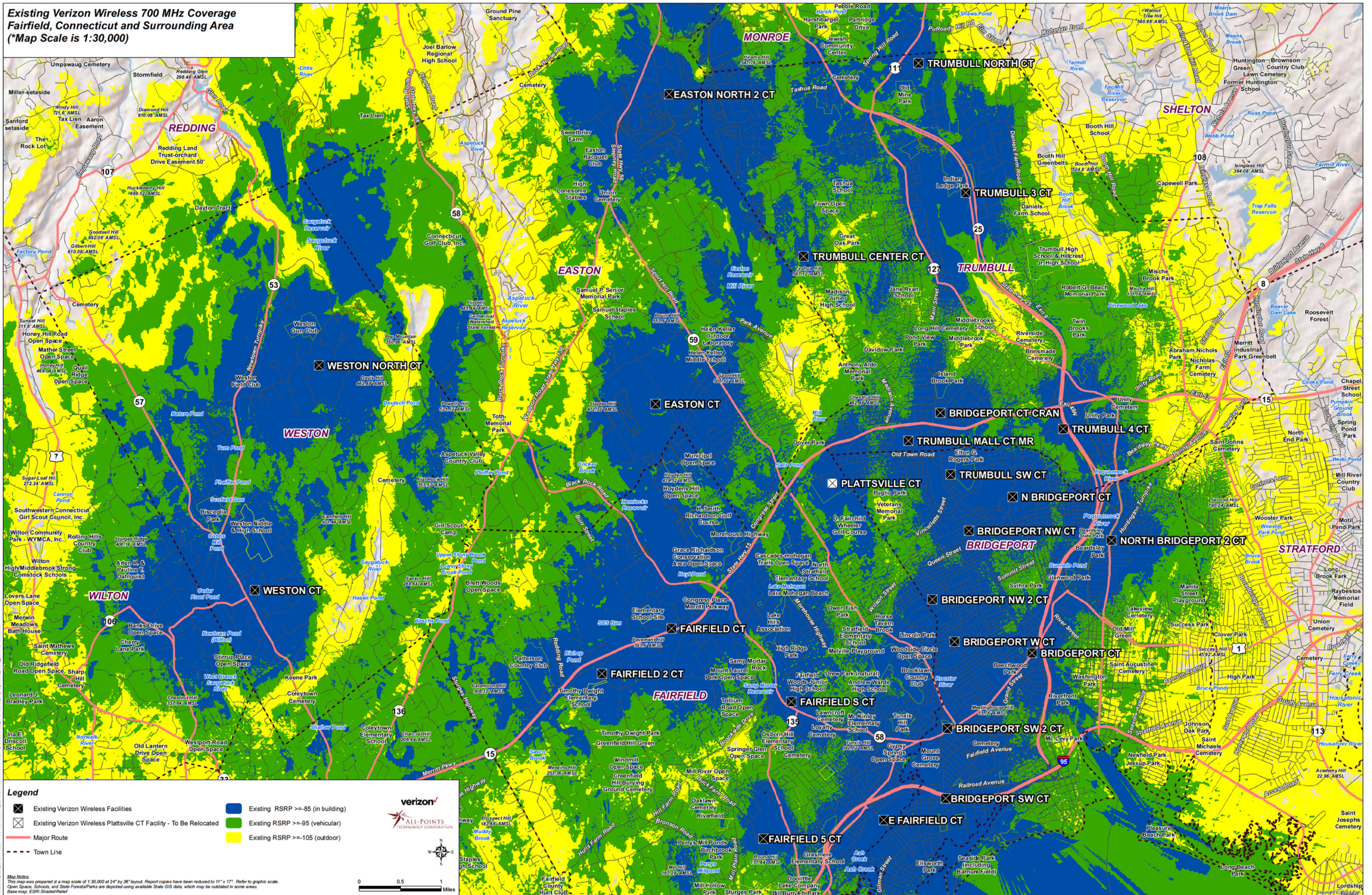


**Existing Verizon Wireless 700 MHz Coverage
Fairfield, Connecticut and Surrounding Area
(*Map Scale is 1:30,000)**



Legend

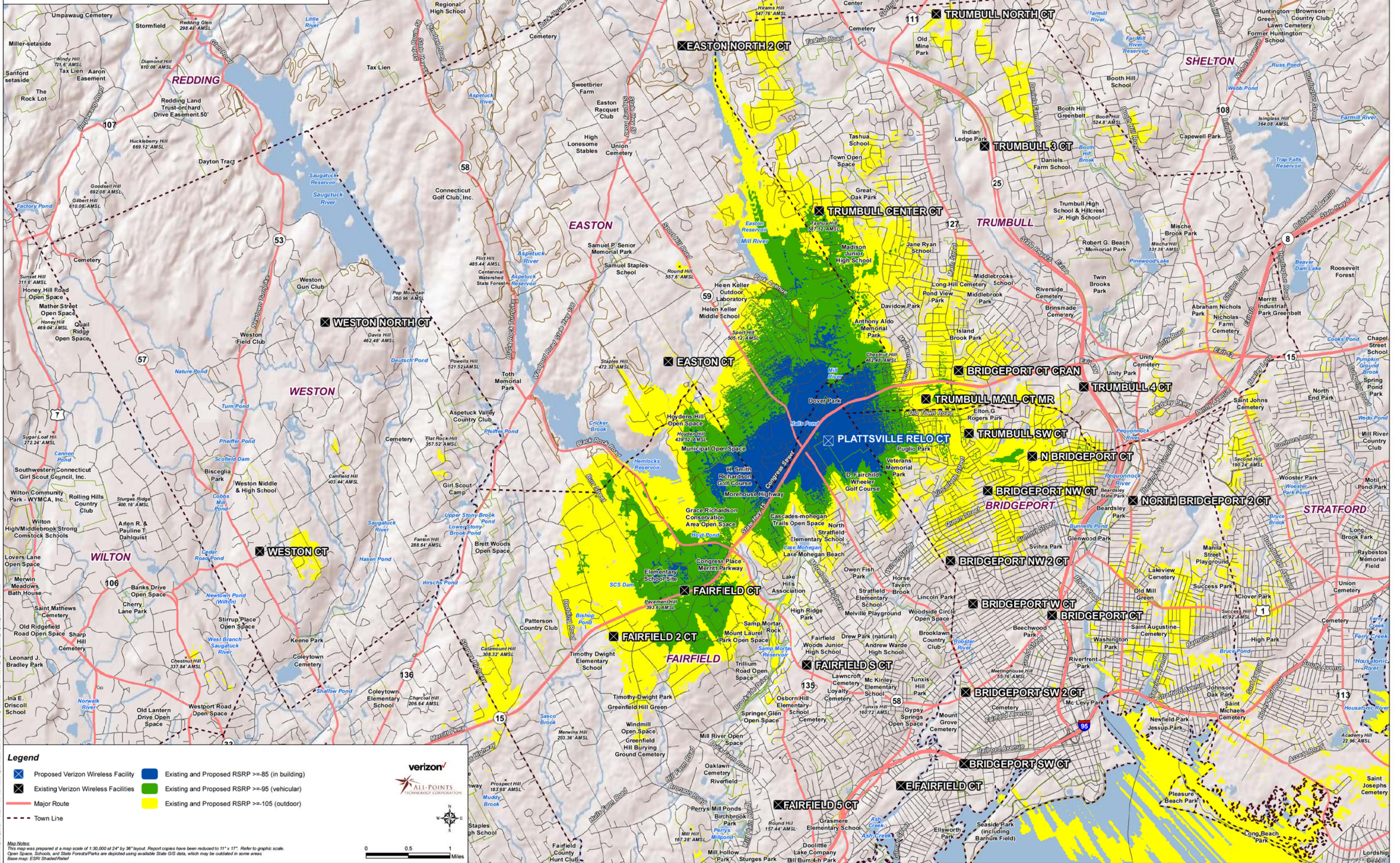
- Existing Verizon Wireless Facilities
- Existing Verizon Wireless Plattsville CT Facility - To Be Relocated
- Major Route
- Town Line
- Existing RSRP >= -85 (in building)
- Existing RSRP >= -95 (vehicular)
- Existing RSRP >= -105 (outdoor)

Map Notes:
This map was prepared at a map scale of 1:30,000 at 24" by 36" layout. Report copies have been reduced to 11" x 17". Refer to graphic scale.
Open Spaces, Schools, and State Forests/Parks are depicted using available State GIS data, which may be outdated in some areas.
Base map: ESRI Shaded Relief

Verizon
ALL-POINTS
TECHNOLOGY CORPORATION

0 0.5 1 Miles

**Existing and Proposed Verizon Wireless 850 MHz Coverage
Fairfield, Connecticut and Surrounding Area
(*Map Scale is 1:30,000)**



Legend

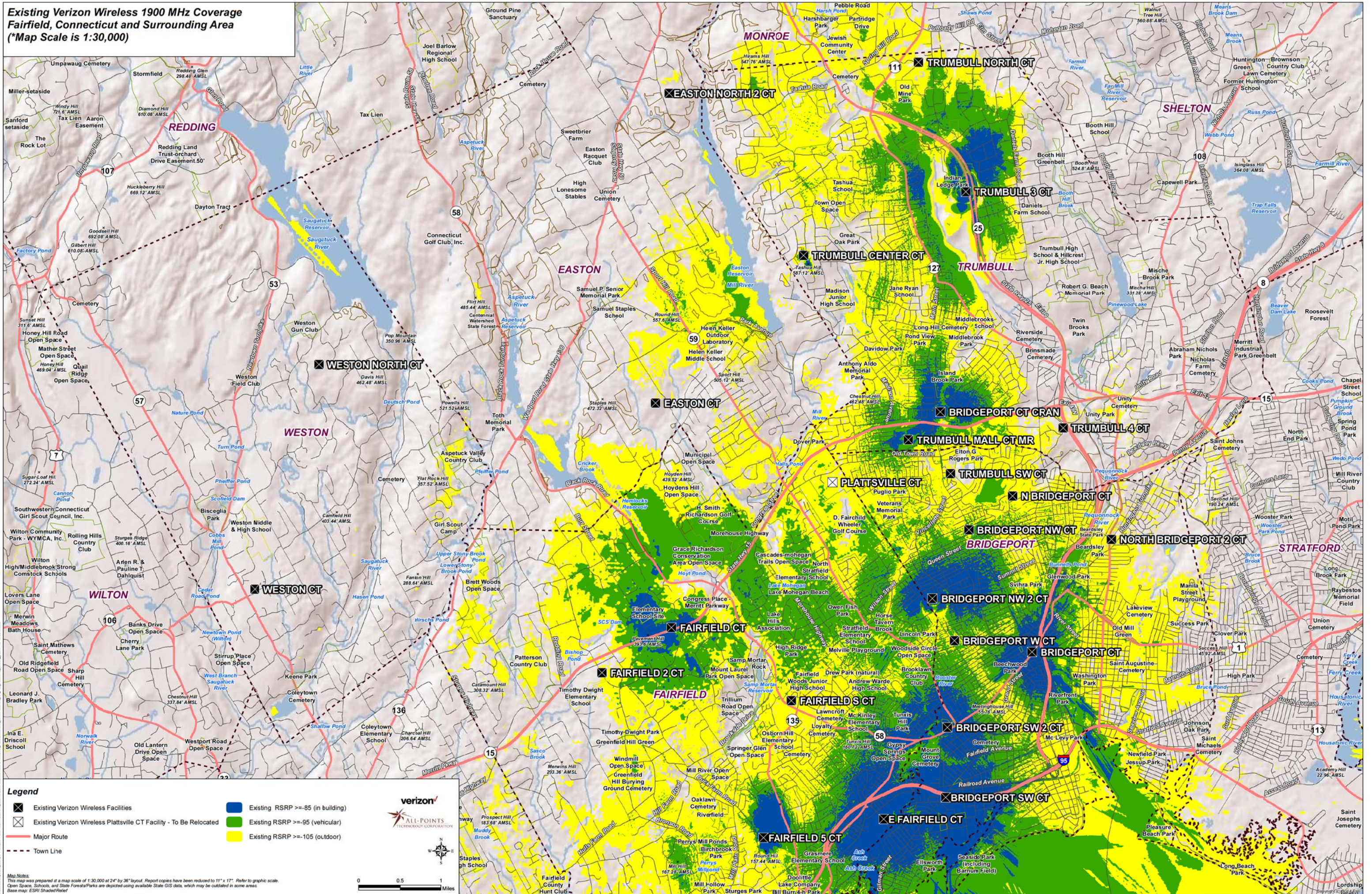
- Blue square with 'X': Proposed Verizon Wireless Facility
- Black square with 'X': Existing Verizon Wireless Facilities
- Red line: Major Route
- Dashed black line: Town Line
- Blue square: Existing and Proposed RSRP >= 85 (in building)
- Green square: Existing and Proposed RSRP >= 95 (vehicular)
- Yellow square: Existing and Proposed RSRP >= 105 (outdoor)

Map Notes:
This map was prepared at a map scale of 1:30,000 at 24" by 36" layout. Report copies have been reduced to 11" x 17". Refer to graphic scale.
Open Space, Schools, and State Forests/Parks are depicted using available State GIS data, which may be outdated in some areas.
Base map: ESRI Shaded Relief

Verizon
ALL-POINTS
TECHNOLOGY CORPORATION

Map Scale: 0 0.5 1 Miles

**Existing Verizon Wireless 1900 MHz Coverage
Fairfield, Connecticut and Surrounding Area
(*Map Scale is 1:30,000)**



Legend

- Existing Verizon Wireless Facilities
- Existing Verizon Wireless Plattsville CT Facility - To Be Relocated
- Major Route
- Town Line
- Existing RSRP >= -85 (in building)
- Existing RSRP >= -95 (vehicular)
- Existing RSRP >= -105 (outdoor)

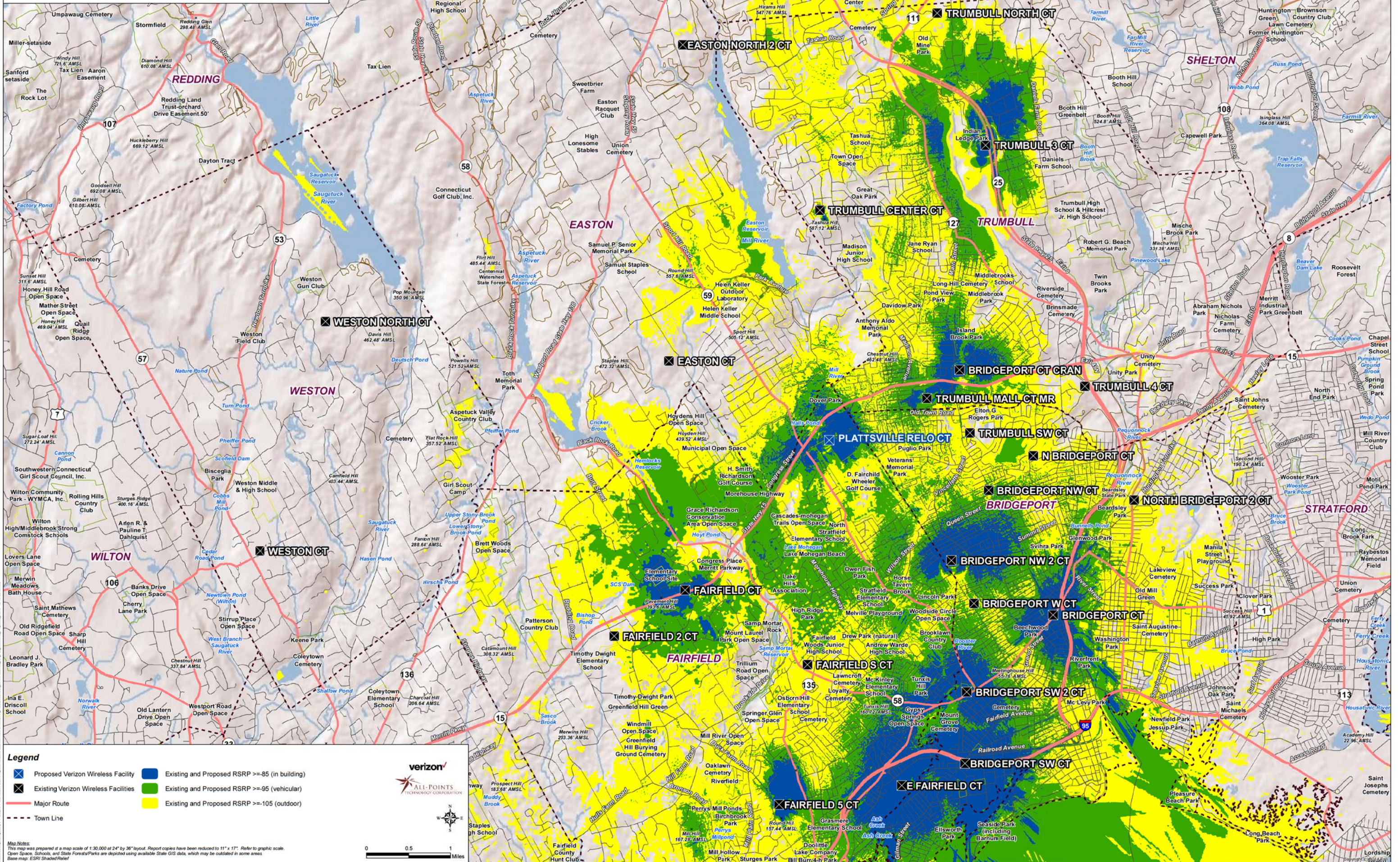
Map Notes:
This map was prepared at a map scale of 1:30,000 at 24" by 36" layout. Report copies have been reduced to 11" x 17". Refer to graphic scale.
Open Space, Schools, and State Forests/Parks are depicted using available State GIS data, which may be outdated in some areas.
Base map: ESRI Shaded Relief

verizon
ALL-POINTS
TECHNOLOGY CORPORATION

0 0.5 1
Miles

Map Notes:
This map was prepared at a map scale of 1:30,000 at 24" by 36" layout. Report copies have been reduced to 11" x 17". Refer to graphic scale.
Open Space, Schools, and State Forests/Parks are depicted using available State GIS data, which may be outdated in some areas.
Base map: ESRI Shaded Relief

**Existing and Proposed Verizon Wireless 1900 MHz Coverage
Fairfield, Connecticut and Surrounding Area
(*Map Scale is 1:30,000)**



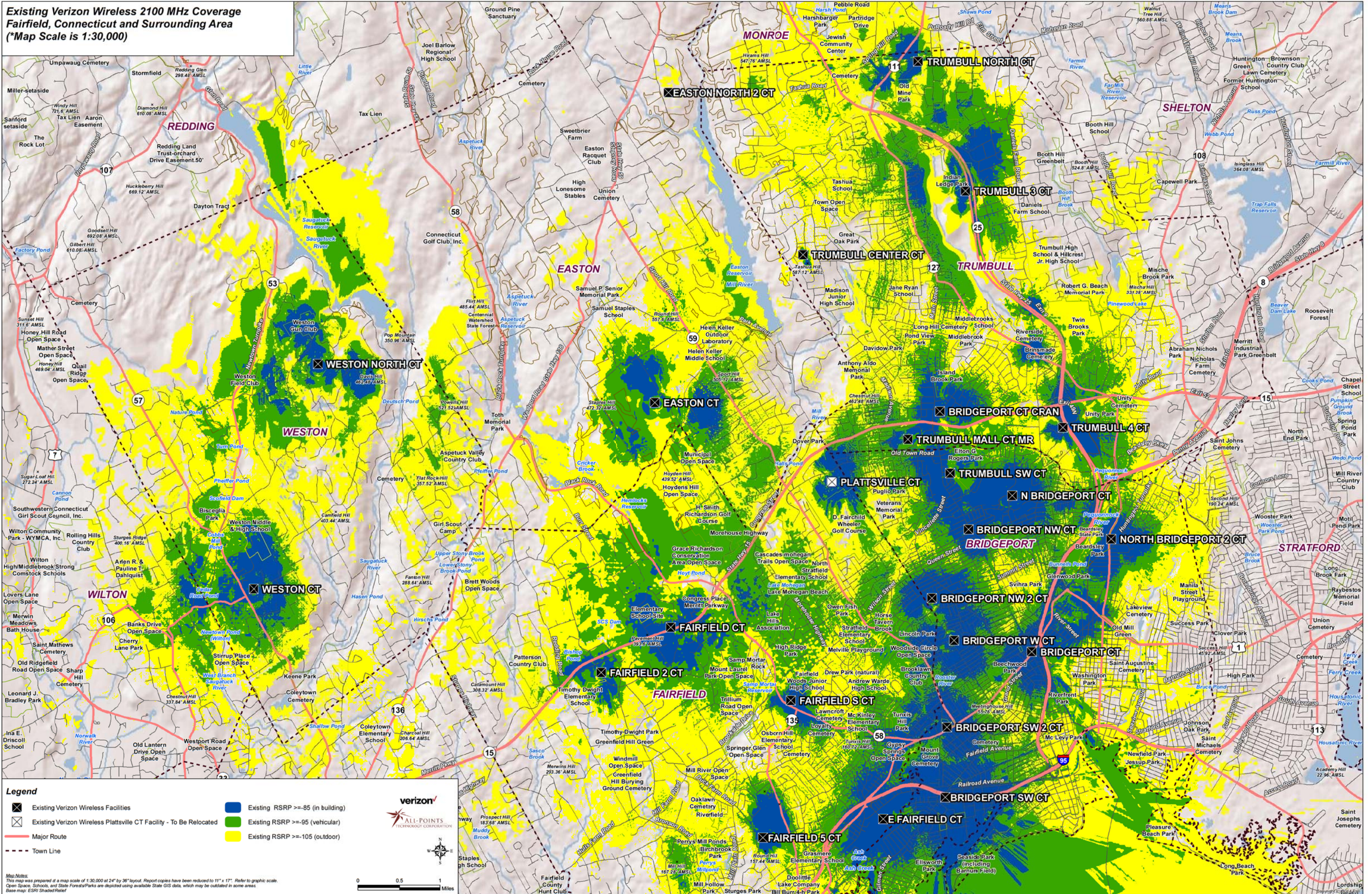
- Legend**
- Proposed Verizon Wireless Facility
 - Existing and Proposed RSRP >= -85 (in building)
 - Existing and Proposed RSRP >= -95 (vehicular)
 - Existing and Proposed RSRP >= -105 (outdoor)
 - Existing Verizon Wireless Facilities
 - Major Route
 - - - Town Line

Map Notes:
This map was prepared at a map scale of 1:30,000 at 24" by 36" layout. Report copies have been reduced to 11" x 17". Refer to graphic scale.
Open Space, Schools, and State Forests/Parks are depicted using available State GIS data, which may be outdated in some areas.
Base map: ESRI Shaded Relief

verizon
ALL-POINTS
TECHNOLOGY CORPORATION

Map Scale: 1:30,000
Date: 12/15/2010

**Existing Verizon Wireless 2100 MHz Coverage
Fairfield, Connecticut and Surrounding Area
(*Map Scale is 1:30,000)**



Legend

- Existing Verizon Wireless Facilities
- Existing Verizon Wireless Plattsville CT Facility - To Be Relocated
- Major Route
- Town Line
- Existing RSRP >= -85 (in building)
- Existing RSRP >= -95 (vehicular)
- Existing RSRP >= -105 (outdoor)

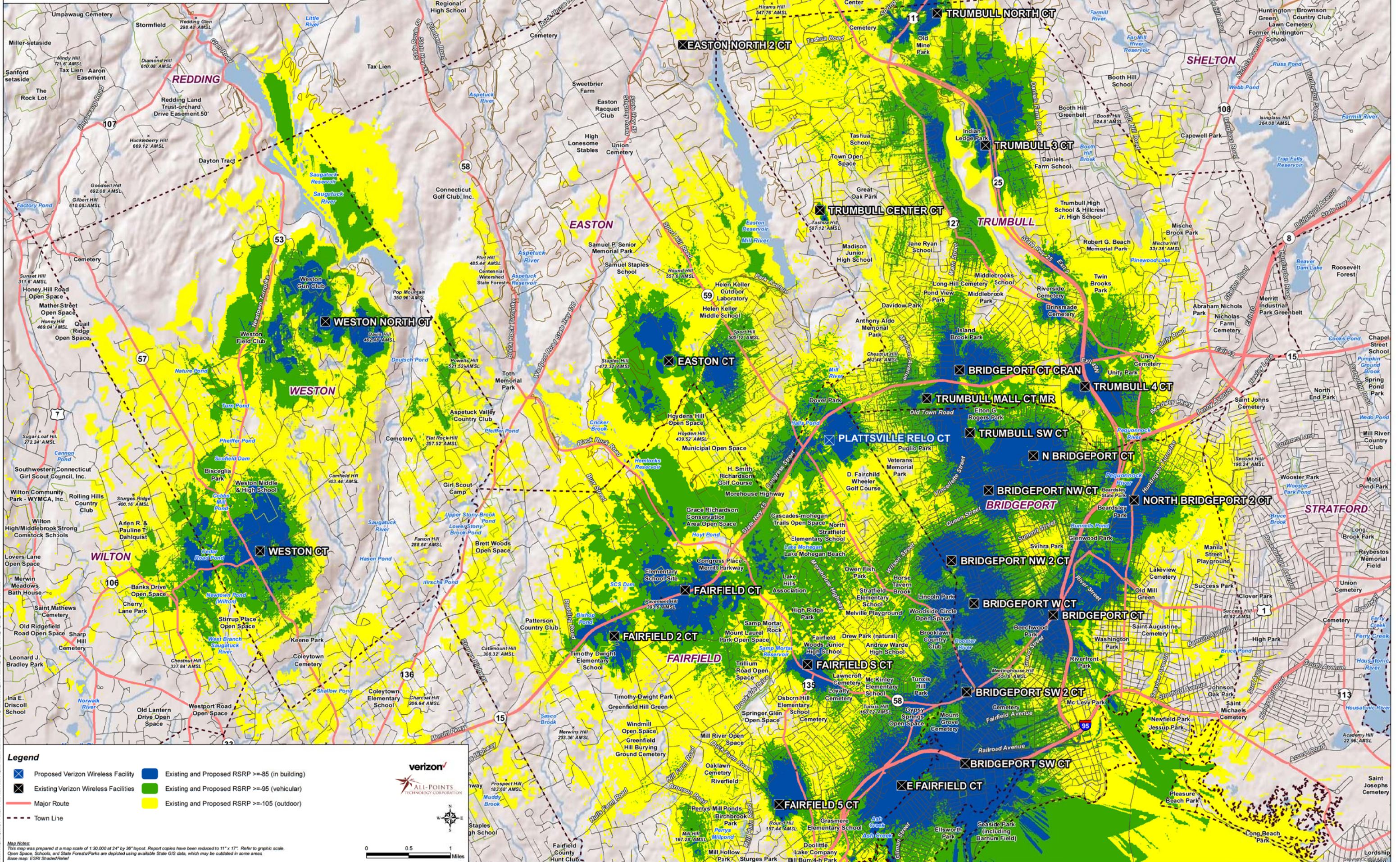
Map Notes:
This map was prepared at a map scale of 1:30,000 at 24" by 36" layout. Report copies have been reduced to 11" x 17". Refer to graphic scale.
Open Space, Schools, and State Forests/Parks are depicted using available State GIS data, which may be outdated in some areas.
Base map: ESRI Shaded Relief

Verizon
ALL-POINTS
TECHNOLOGY CORPORATION

0 0.5 1 Miles

Map Notes:
This map was prepared at a map scale of 1:30,000 at 24" by 36" layout. Report copies have been reduced to 11" x 17". Refer to graphic scale.
Open Space, Schools, and State Forests/Parks are depicted using available State GIS data, which may be outdated in some areas.
Base map: ESRI Shaded Relief

**Existing and Proposed Verizon Wireless 2100 MHz Coverage
Fairfield, Connecticut and Surrounding Area
(*Map Scale is 1:30,000)**



Legend

- Proposed Verizon Wireless Facility
- Existing and Proposed RSRP >=85 (in building)
- Existing Verizon Wireless Facilities
- Existing and Proposed RSRP >=95 (vehicular)
- Major Route
- - - Town Line
- Existing and Proposed RSRP >=105 (outdoor)

Map Notes:
This map was prepared at a map scale of 1:30,000 at 24" by 36" layout. Report copies have been reduced to 11" x 17". Refer to graphic scale.
Open Space, Schools, and State Forests/Parks are depicted using available State GIS data, which may be outdated in some areas.
Base map: ESRI Shaded Relief

verizon
ALL-POINTS
TECHNOLOGY CORPORATION

0 0.5 1 Miles

Connecticut Dept. of Transportation, Fairfield County GIS, ESRI, Verizon Wireless, All-Points Technology Corporation, 2019/06/15, 10:30 AM