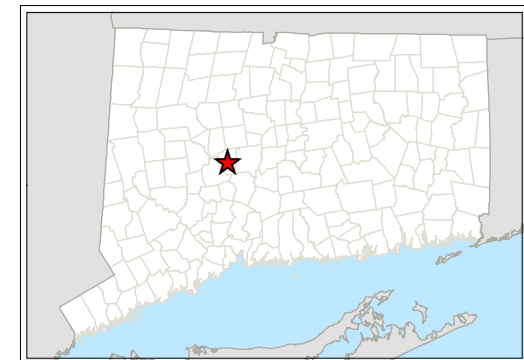
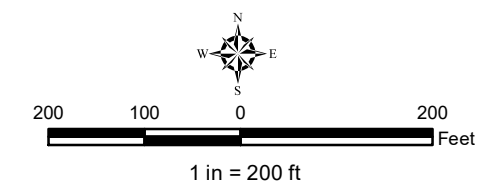
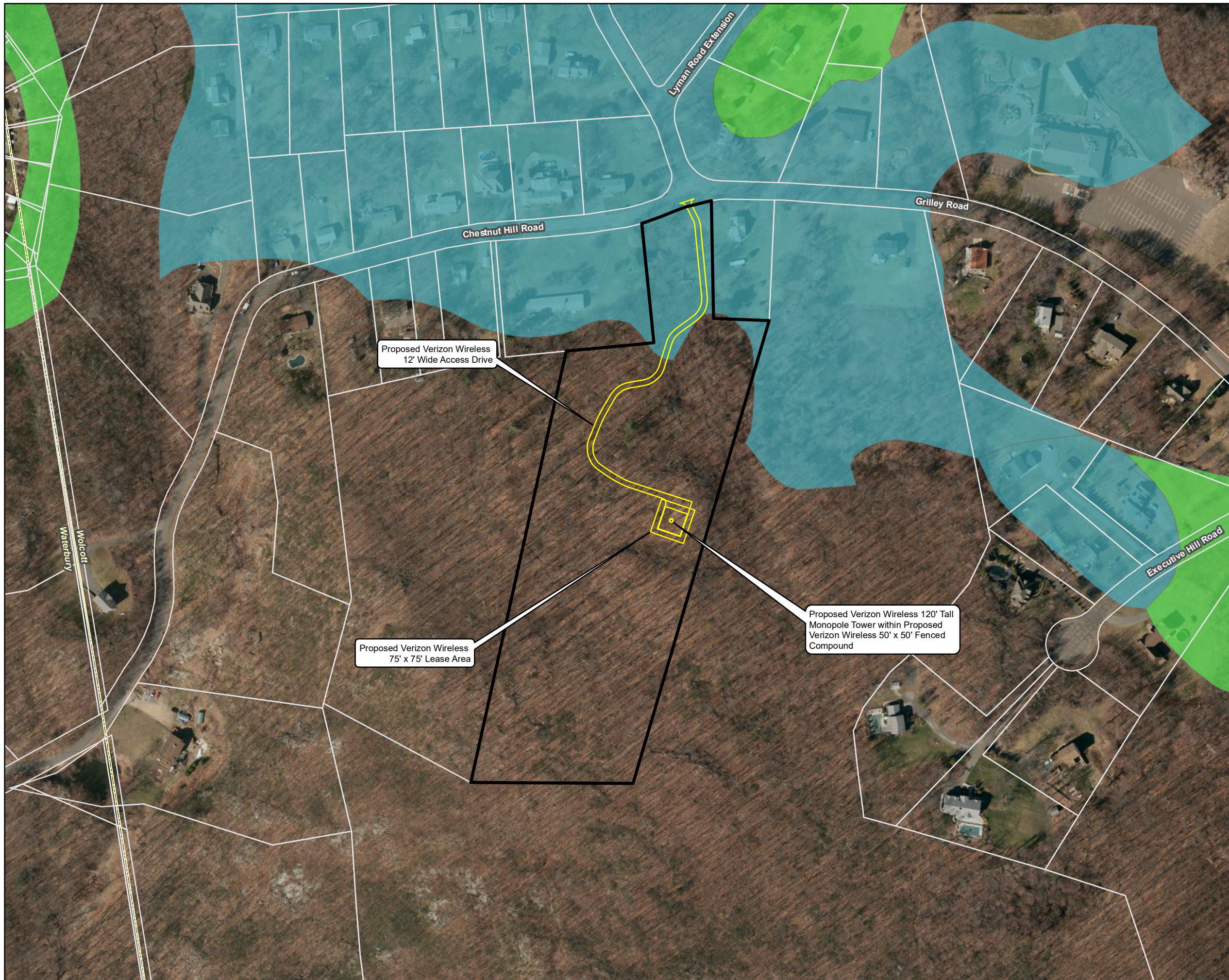


**Farmland Soils**  
**Proposed Wireless Telecommunications Facility**  
**Wolcott South CT**  
**Chestnut Hill Road**  
**Wolcott, Connecticut**



**Legend**

- Proposed Verizon Wireless Monopole Tower
- Proposed Verizon Wireless Site Layout
- Subject Property
- Approximate Parcel Boundary (CTDEEP GIS)
- Prime Farmland Soils
- Statewide Important Farmland Soils



**Map Sources:**

Ortho Base Map: CTECO 2016 Aerial Imagery  
 CTDEEP's data library (<http://www.ct.gov/deep>)  
 Data layers are maintained and updated by CTDEEP and represent the most recent publications.

Map Date: July 2020