



**PRELIMINARY HISTORIC
RESOURCES DETERMINATION**

December 5, 2019

**Verizon Wireless
20 Alexander Drive
Wallingford, Connecticut 06492**

**Re: Proposed Telecommunications Facility
Chestnut Hill Road
Wolcott, Connecticut**

On behalf of Verizon Wireless, All-Points Technology Corporation, P.C. ("APT") performed an evaluation with respect to the proposed Facility's potential impacts on historic resources proximate to the referenced project site.

As part of its obligations for compliance with the National Environmental Policy Act ("NEPA"), Verizon Wireless will be submitting required documentation to the State Historic Preservation Office ("SHPO") for this agency's review and determination. The SHPO submission will be prepared by a qualified architectural historian that meets criteria developed by the Secretary of the Interior. That process has not yet been initiated.

In the meantime, APT completed an independent review of the National Register of Historic Places ("NRHP") and State Historic Preservation Office ("SHPO") files to determine if any listed sites, or sites eligible for listing, are located proximate to the Site. The results of our review revealed that no such resources are located within one-half mile of the site.¹ Further, no state-registered sites are located proximate to the project site. A historic resource screening map is provided as an attachment to this memorandum.

Based on our research, it is APT's opinion that the proposed Facility would have no effect on historic properties listed or eligible for listing on the NRHP.

Sincerely,

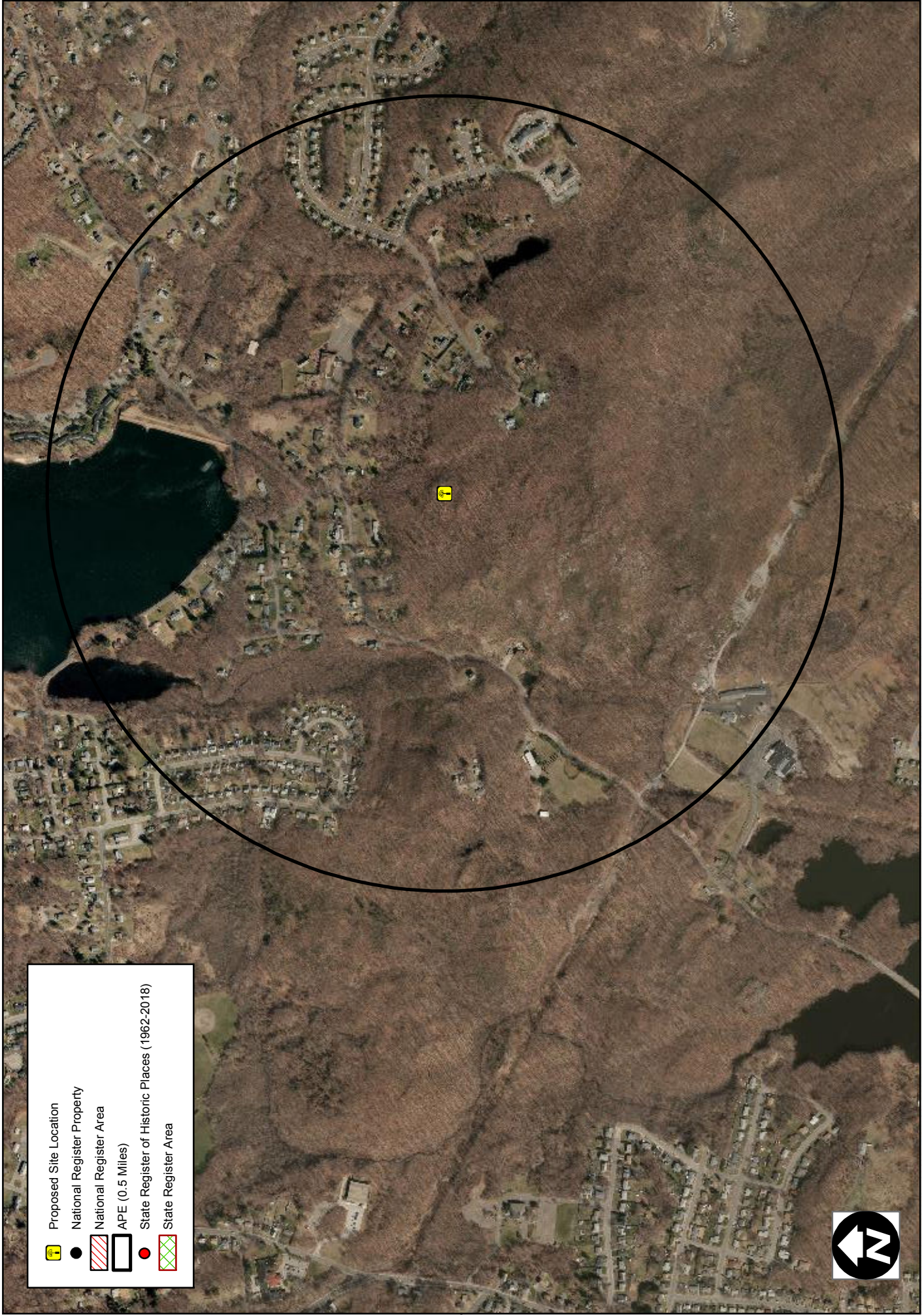
A handwritten signature in cursive script that reads "Michael Libertine".

Michael Libertine,
Director of Siting and Permitting

Attachment

¹ For towers under 200 feet tall, the Area of Potential Effect ("APE") has been established at 0.5 mile. This distance represents the APE established cooperatively by the Federal Communications Commission, Advisory Council on Historic Preservation and the National Conference of State Historic Preservation Officers.

Historic Resource Screening Map



	Proposed Site Location
	National Register Property
	National Register Area
	APE (0.5 Miles)
	State Register of Historic Places (1962-2018)
	State Register Area

