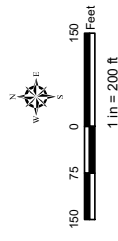
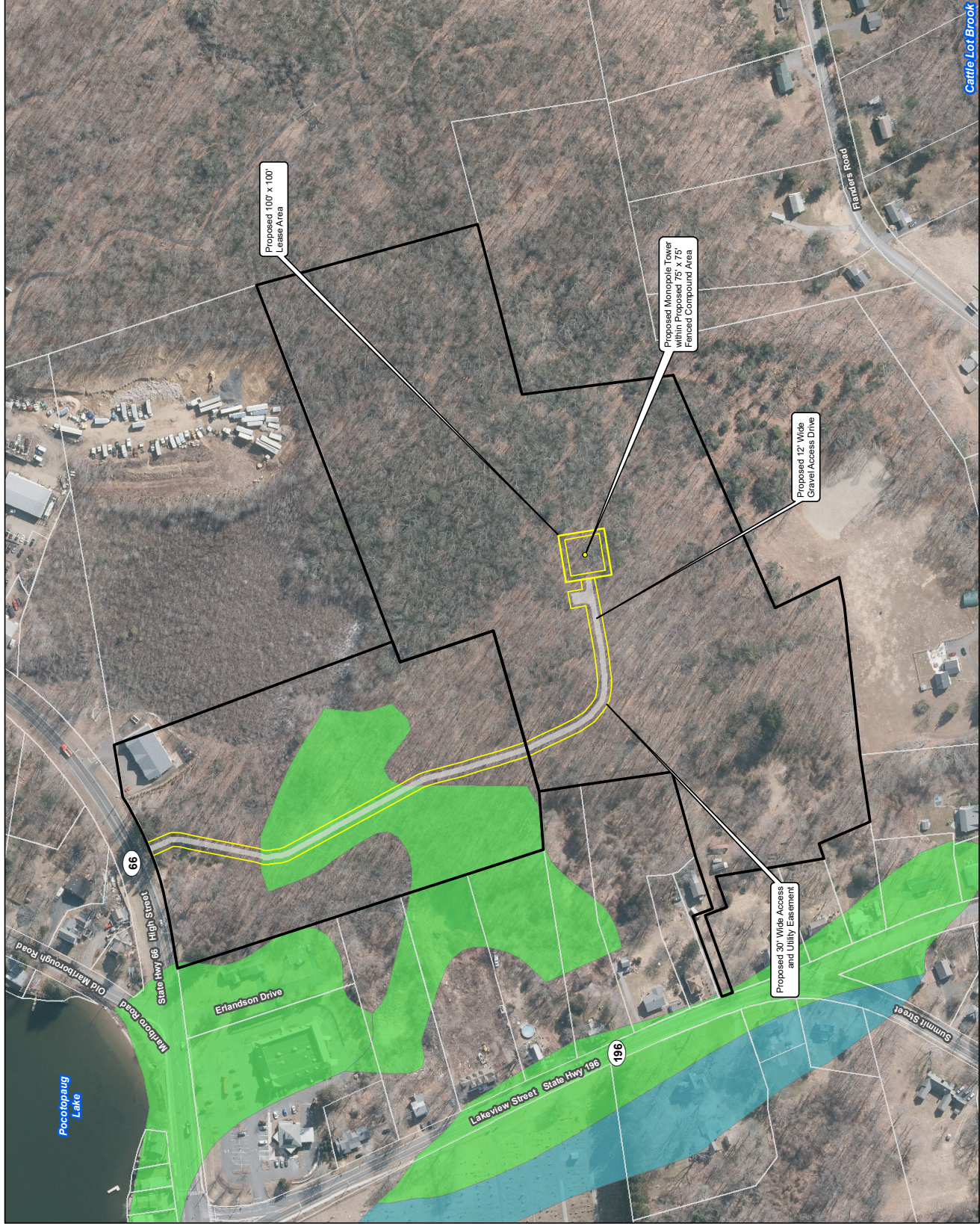


Farmland Soils
Proposed Wireless Telecommunications Facility
Site Number 876352
8 1/2 Lakeview Street
East Hampton, Connecticut

- Legend**
- Proposed Equipment
 - Proposed Site Layout
 - Proposed Gravel Access Drive
 - Subject Property
 - Approximate Parcel Boundary (CTDEEP GIS)
 - Prime Farmland Soils
 - Statewide Important Farmland Soils



Map Sources:
 Ortho Base Map: CTECO 2019 Aerial Imagery
 CTDEEP's data files: <http://www.ct.gov/ctdeep>
 Data have been maintained and updated by CTDEEP and represent the most recent publications.
 Map Date: May 2020



C:\Users\mkrope\Dropbox (APT_GIS)\APT_GIS_Team_Folder\Projects\Robinson and Cole\EastHampton_Crown\mxd\East_Hampton_Barnland_Soils.mxd NCC **Cattle Lot Brook**