



PRELIMINARY HISTORIC RESOURCES DETERMINATION

August 18, 2020

**Crown Castle USA, Inc.
2000 Corporate Drive
Canonsburg, PA 15317**

**Re: Proposed Telecommunications Facility
8 ½ Lakeview Street
East Hampton, Connecticut**

On behalf of Crown Castle, All-Points Technology Corporation, P.C. ("APT") performed an evaluation with respect to the proposed Facility's potential effects on historic resources proximate to the referenced project site.

APT completed an independent review of the National Register of Historic Places ("NRHP") and SHPO files to determine if any listed sites, or sites eligible for listing, are located proximate to the Site. The results of our review revealed that one such resource listed on the NRHP is located within one-half mile of the Site APE¹. A small portion of the Belltown Historic District ("District"), located west of the Site, extends into the APE. The Site and District are depicted on the cultural resource screening map provided as an attachment to this memorandum.

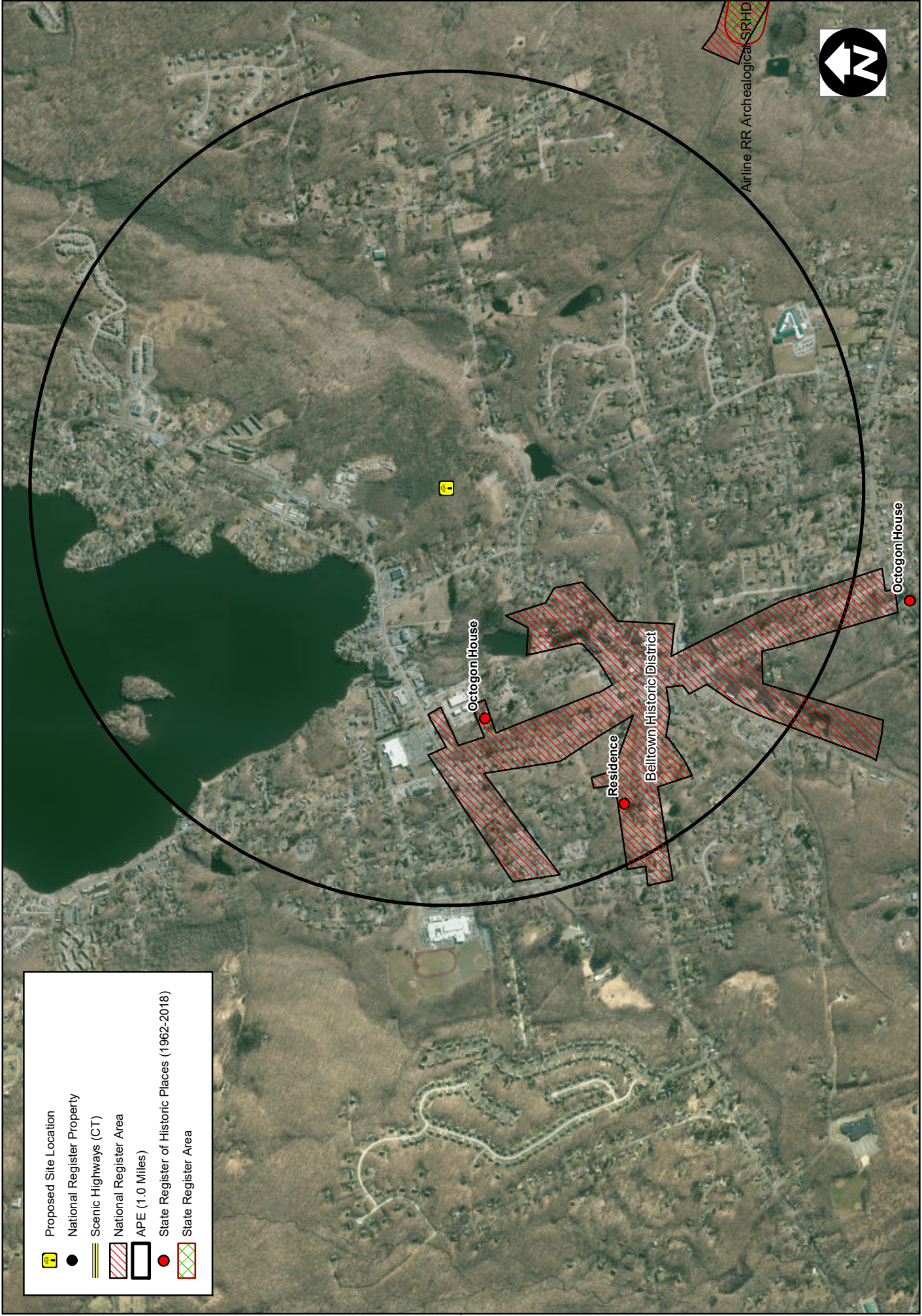
Based on the results of our visual evaluation, no views of the Facility would occur inside that portion of the District physically located within the APE. The Facility would be visible from select, elevated locations within the western portion of the District at distances over 0.75 away.

As part of its obligations for compliance with the National Environmental Policy Act ("NEPA"), Crown Castle will be submitting required documentation to the State Historic Preservation Office ("SHPO") for this agency's review and determination. The SHPO submission will be prepared by a qualified architectural historian that meets criteria developed by the Secretary of the Interior. That process has not yet been initiated.

Attachment

¹ For towers over 200 feet tall, the Area of Potential Effect ("APE") has been established at 1.0 mile. This distance represents the APE established cooperatively by the Federal Communications Commission, Advisory Council on Historic Preservation and the National Conference of State Historic Preservation Officers.

Cultural Resource Screening Map



-  Proposed Site Location
-  National Register Property
-  Scenic Highways (CT)
-  National Register Area
-  APE (1.0 Miles)
-  State Register of Historic Places (1962-2018)
-  State Register Area

Cultural Resources Screen
CT389150 East Hampton - 8 1/2 Lakeview Street, East Hampton, CT
 May 29, 2020 | USGS QUAD: East Hampton



Prepared for All-Points Technology Corp. by Heritage Consultants, 2020