



PHOTOGRAPHED ON 7/24/2020

EXISTING

PHOTO

27

LOCATION

NORTH MAIN STREET AT CHRISTOPHER ROAD

ORIENTATION

SOUTHEAST

DISTANCE TO SITE

+/- 0.96 MILE

VISIBILITY

NOT VISIBLE



PHOTOGRAPHED ON 7/24/2020

EXISTING

PHOTO

28

LOCATION

SEARS PARK

ORIENTATION

SOUTHEAST

DISTANCE TO SITE

+/- 0.91 MILE

VISIBILITY

YEAR ROUND



PROPOSED

PHOTO

28

LOCATION

SEARS PARK

ORIENTATION

SOUTHEAST

DISTANCE TO SITE

+/- 0.91 MILE

VISIBILITY

YEAR ROUND



PHOTOGRAPHED ON 7/24/2020

EXISTING

PHOTO

29

LOCATION

SEARS PARK

ORIENTATION

SOUTHEAST

DISTANCE TO SITE

+/- 0.94 MILE

VISIBILITY

YEAR ROUND



PROPOSED

PHOTO

29

LOCATION

SEARS PARK

ORIENTATION

SOUTHEAST

DISTANCE TO SITE

+/- 0.94 MILE

VISIBILITY

YEAR ROUND



PHOTOGRAPHED ON 7/24/2020
35mm focal length

EXISTING

PHOTO	LOCATION	ORIENTATION	DISTANCE TO SITE	VISIBILITY
30	NORTH MAIN STREET AT SEARS PARK	SOUTHEAST	+/- 1.00 MILE	NOT VISIBLE



EXISTING TOWER TO BE REMOVED

EXISTING

PHOTO

31

LOCATION

NORTH MAIN STREET

ORIENTATION

SOUTHEAST

DISTANCE TO SITE

+/- 1.16 MILES

VISIBILITY

YEAR ROUND



PROPOSED

PHOTO

31

LOCATION

NORTH MAIN STREET

ORIENTATION

SOUTHEAST

DISTANCE TO SITE

+/- 1.16 MILES

VISIBILITY

YEAR ROUND



EXISTING TOWER TO BE REMOVED

EXISTING

PHOTO

32

LOCATION

NORTH MAIN STREET

ORIENTATION

SOUTHEAST

DISTANCE TO SITE

+/- 1.35 MILES

VISIBILITY

YEAR ROUND



PROPOSED

PHOTO	LOCATION	ORIENTATION	DISTANCE TO SITE	VISIBILITY
32	NORTH MAIN STREET	SOUTHEAST	+/- 1.35 MILES	YEAR ROUND



PHOTOGRAPHED ON 7/24/2020

EXISTING

PHOTO

33

LOCATION

SUNRISE LANE

ORIENTATION

SOUTHEAST

DISTANCE TO SITE

+/- 1.66 MILES

VISIBILITY

YEAR ROUND





PROPOSED

PHOTO

33

LOCATION

SUNRISE LANE

ORIENTATION

SOUTHEAST

DISTANCE TO SITE

+/- 1.66 MILES

VISIBILITY

YEAR ROUND



EXISTING TOWER TO BE REMOVED

PHOTOGRAPHED ON 7/24/2020

EXISTING

PHOTO	LOCATION	ORIENTATION	DISTANCE TO SITE	VISIBILITY
34	MOUNTAINVIEW ROAD	SOUTHEAST	+/- 1.46 MILES	YEAR ROUND



PROPOSED

PHOTO

34

LOCATION

MOUNTAINVIEW ROAD

ORIENTATION

SOUTHEAST

DISTANCE TO SITE

+/- 1.46 MILES

VISIBILITY

YEAR ROUND



PHOTOGRAPHED ON 7/24/2020

EXISTING

PHOTO

35

LOCATION

MOUNTAINVIEW ROAD

ORIENTATION

SOUTHEAST

DISTANCE TO SITE

+/- 1.61 MILES

VISIBILITY

NOT VISIBLE



EXISTING TOWER TO BE REMOVED

EXISTING

PHOTO

36

LOCATION

LAKE DRIVE

ORIENTATION

SOUTHEAST

DISTANCE TO SITE

+/- 1.38 MILES

VISIBILITY

YEAR ROUND

PHOTOGRAPHED ON 7/24/2020 35mm focal length



PROPOSED

PHOTO

36

LOCATION

LAKE DRIVE

ORIENTATION

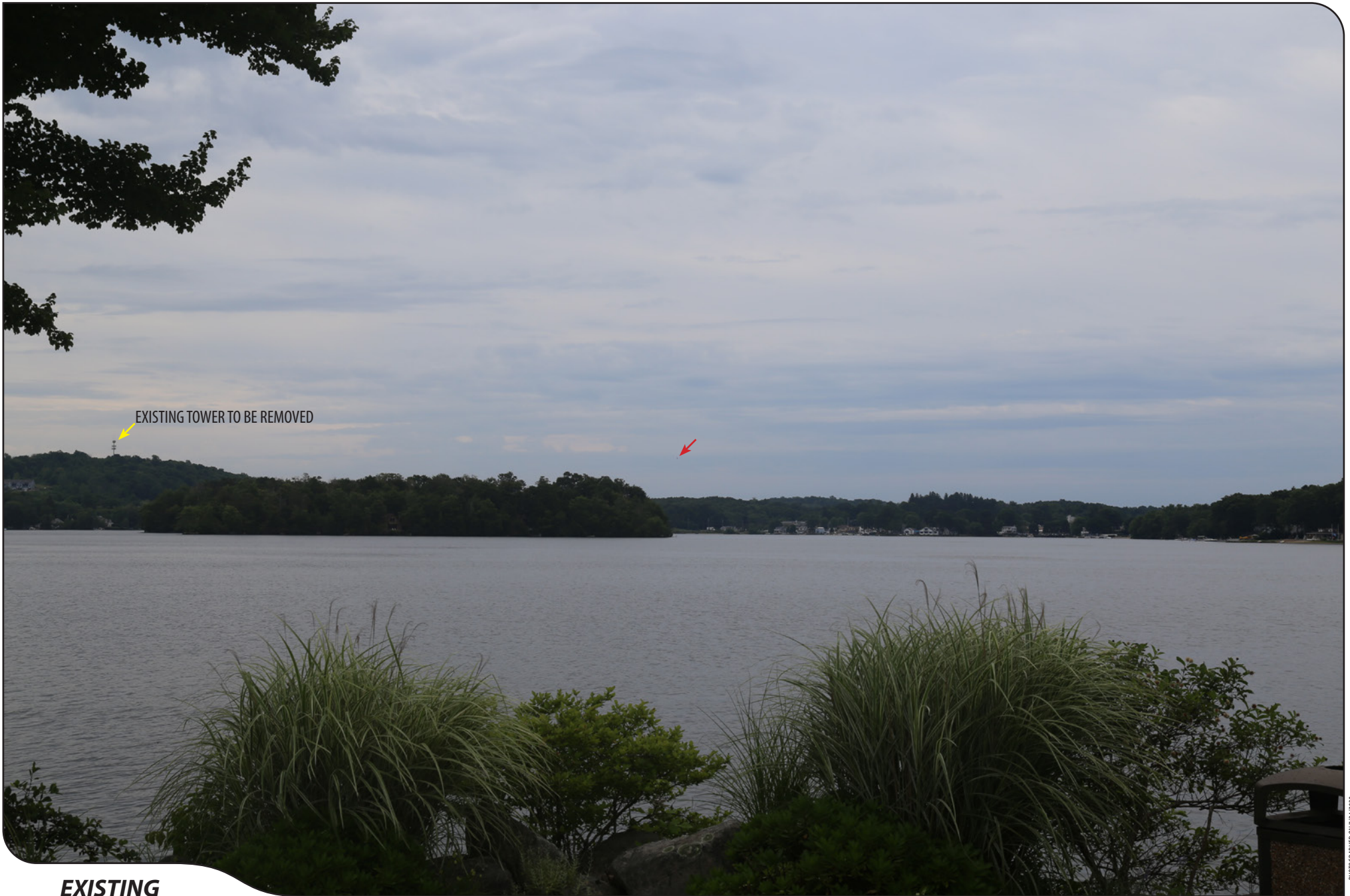
SOUTHEAST

DISTANCE TO SITE

+/- 1.38 MILES

VISIBILITY

YEAR ROUND



PHOTOGRAPHED ON 7/24/2020

EXISTING

PHOTO

37

LOCATION

LAKE DRIVE

ORIENTATION

SOUTHEAST

DISTANCE TO SITE

+/- 1.41 MILES

VISIBILITY

YEAR ROUND





PROPOSED

PHOTO

37

LOCATION

LAKE DRIVE

ORIENTATION

SOUTHEAST

DISTANCE TO SITE

+/- 1.41 MILES

VISIBILITY

YEAR ROUND



35mm focal length
PHOTOGRAPHED ON 7/24/2020

EXISTING

PHOTO

38

LOCATION

LAKE DRIVE

ORIENTATION

SOUTHEAST

DISTANCE TO SITE

+/- 1.51 MILE

VISIBILITY

NOT VISIBLE



PHOTOGRAPHED ON 7/24/2020

EXISTING

PHOTO

39

LOCATION

LAKE DRIVE

ORIENTATION

SOUTHEAST

DISTANCE TO SITE

+/- 1.61 MILES

VISIBILITY

YEAR ROUND



PROPOSED

PHOTO

39

LOCATION

LAKE DRIVE

ORIENTATION

SOUTHEAST

DISTANCE TO SITE

+/- 1.61 MILES

VISIBILITY

YEAR ROUND



EXISTING TOWER TO BE REMOVED

PHOTOGRAPHED ON 7/24/2020

EXISTING

PHOTO	LOCATION	ORIENTATION	DISTANCE TO SITE	VISIBILITY
40	LAKE DRIVE	SOUTHEAST	+/- 1.64 MILES	YEAR ROUND



PROPOSED

PHOTO

40

LOCATION

LAKE DRIVE

ORIENTATION

SOUTHEAST

DISTANCE TO SITE

+/- 1.64 MILES

VISIBILITY

YEAR ROUND



PHOTOGRAPHED ON 7/24/2020

EXISTING

PHOTO

41

LOCATION

MOTT HILL ROAD AT LAKE DRIVE

ORIENTATION

SOUTHEAST

DISTANCE TO SITE

+/- 1.64 MILES

VISIBILITY

NOT VISIBLE



PHOTOGRAPHED ON 7/24/2020

EXISTING

PHOTO

42

LOCATION

LAKE DRIVE

ORIENTATION

SOUTHEAST

DISTANCE TO SITE

+/- 1.60 MILES

VISIBILITY

YEAR ROUND





PROPOSED

PHOTO

42

LOCATION

LAKE DRIVE

ORIENTATION

SOUTHEAST

DISTANCE TO SITE

+/- 1.60 MILES

VISIBILITY

YEAR ROUND



PHOTOGRAPHED ON 7/24/2020

EXISTING

PHOTO

43

LOCATION

CANDLEWOOD DRIVE AT LAKE DRIVE

ORIENTATION

SOUTHEAST

DISTANCE TO SITE

+/- 1.63 MILES

VISIBILITY

NOT VISIBLE



PHOTOGRAPHED ON 7/24/2020

EXISTING

PHOTO	LOCATION	ORIENTATION	DISTANCE TO SITE	VISIBILITY
44	RAYMOND ROAD AT LAKE DRIVE	SOUTHEAST	+/- 1.61 MILES	NOT VISIBLE



PHOTOGRAPHED ON 7/24/2020

EXISTING

PHOTO

45

LOCATION

POCOTOPAUG DRIVE

ORIENTATION

SOUTHEAST

DISTANCE TO SITE

+/- 1.62 MILES

VISIBILITY

NOT VISIBLE



PHOTOGRAPHED ON 7/24/2020

EXISTING

PHOTO

46

LOCATION

AUBURN KNOLL

ORIENTATION

SOUTHEAST

DISTANCE TO SITE

+/- 1.95 MILES

VISIBILITY

NOT VISIBLE



PHOTOGRAPHED ON 7/24/2020

EXISTING

PHOTO

47

LOCATION

BLUE HERON DRIVE

ORIENTATION

SOUTHEAST

DISTANCE TO SITE

+/- 1.88 MILES

VISIBILITY

NOT VISIBLE



PHOTOGRAPHED ON 7/24/2020

EXISTING

PHOTO

48

LOCATION

SPELLMAN POINT ROAD

ORIENTATION

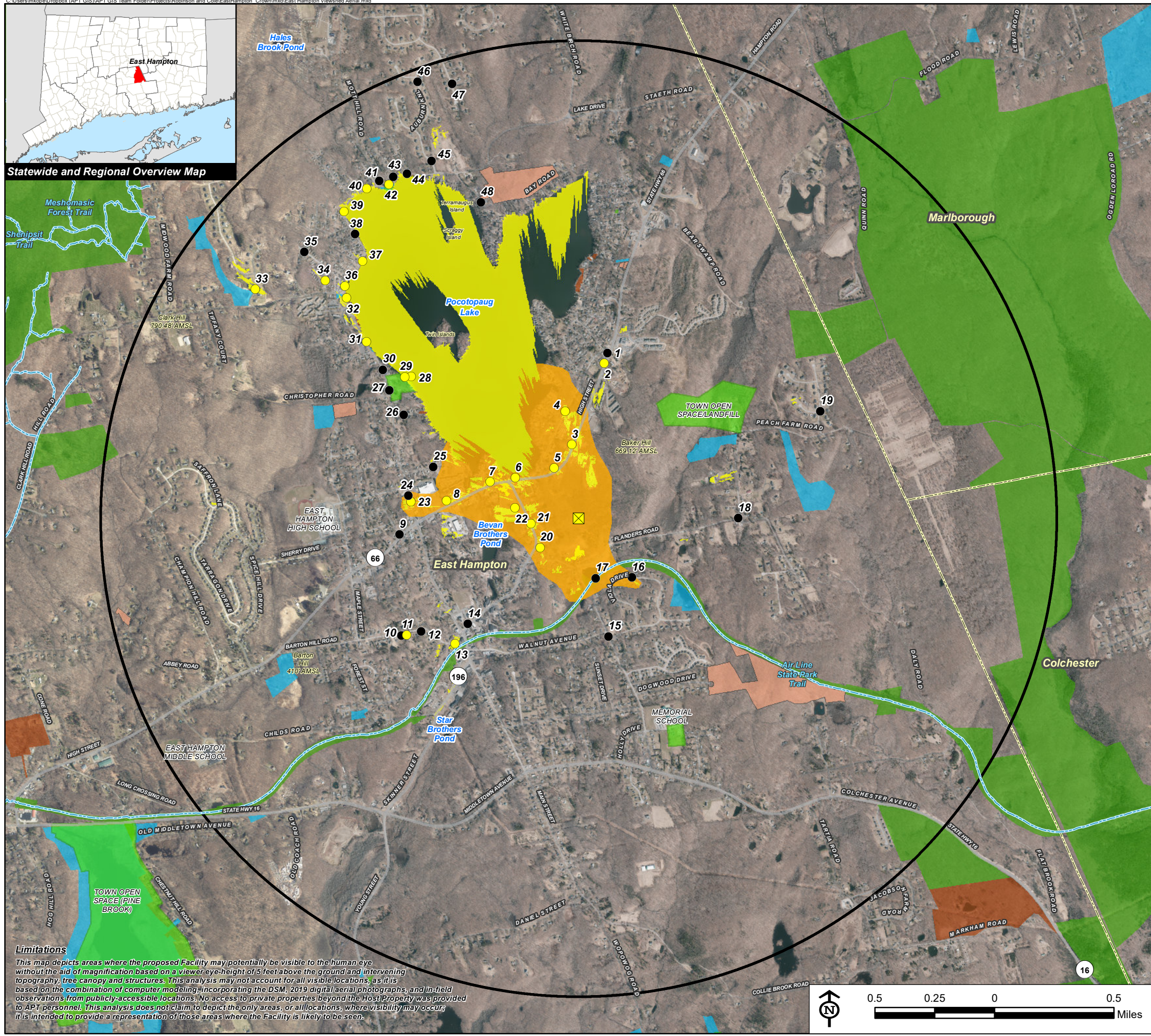
SOUTHEAST

DISTANCE TO SITE

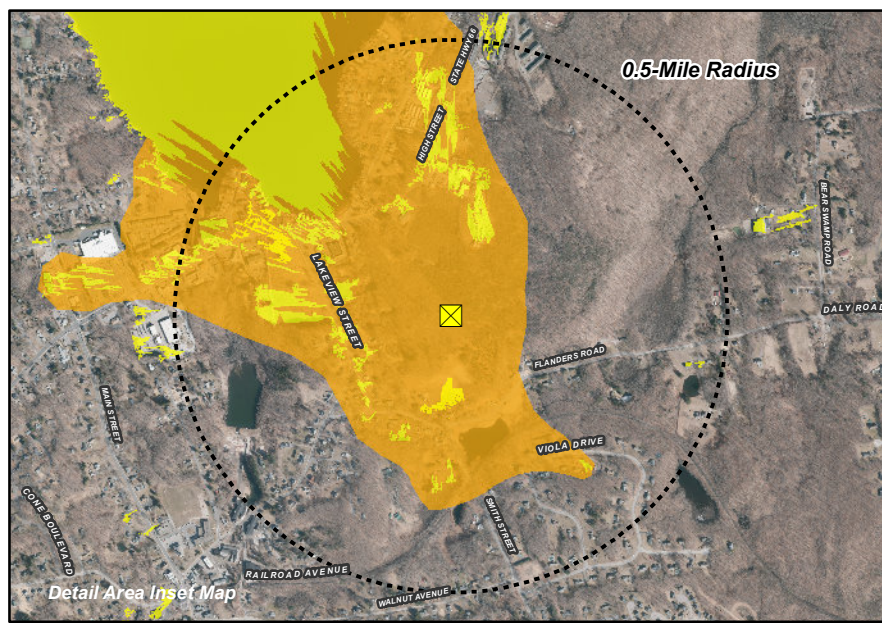
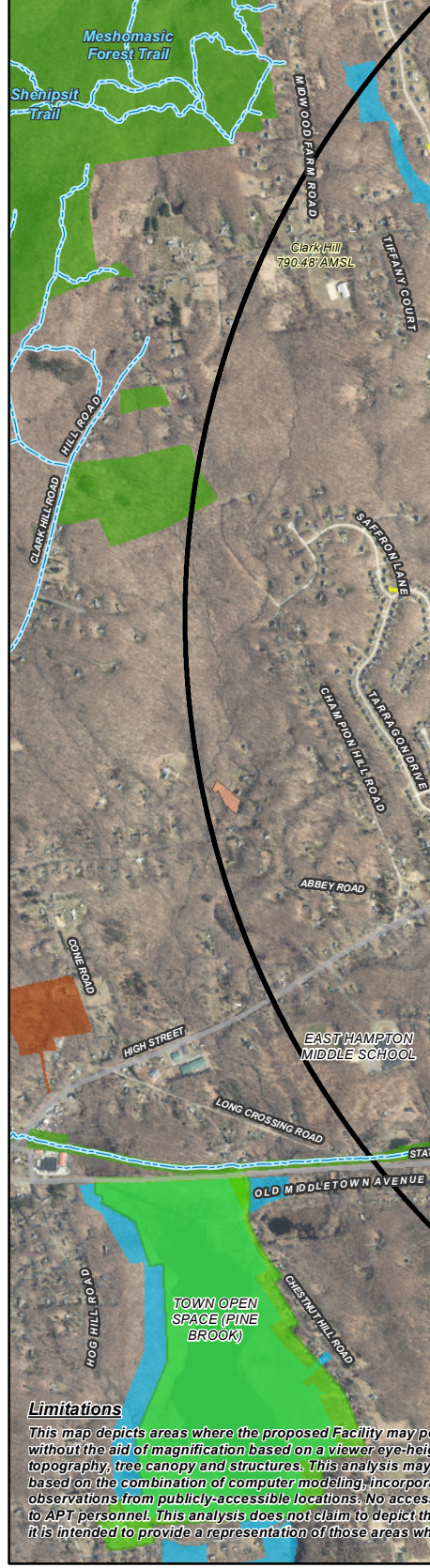
+/- 1.38 MILES

VISIBILITY

NOT VISIBLE



Statewide and Regional Overview Map



Viewshed Analysis Map

Proposed Wireless Telecommunications Facility
 Site Number 876352
 8 1/2 Lakeview Street
 East Hampton, Connecticut

Proposed facility height is 250 feet AGL.
 Forest canopy height is derived from LIDAR data.
 Study area encompasses a two-mile radius and includes 8,042 acres.
 Map information field verified by APT on July 24, 2020
 Base Map Source: 2019 Aerial Photograph (CTECO)
 Map Date: August 2020

Legend

- Proposed Site
- Study Area (2-Mile Radius)
- Predicted Year-Round Visibility (443 Acres; +/- 410 acres occurs over Pocotopaug Lake)
- Areas of Potential Seasonal Visibility (239 Acres)
- Municipal Boundary
- Not Visible
- Year-Round
- Trail
- Scenic Highway
- DEEP Boat Launches
- Municipal and Private Open Space Property
- State Forest/Park
- Protected Open Space Property
- Federal
- Land Trust
- Municipal
- Private
- State

Data Sources:

Physical Geography / Background Data
 A digital surface model (DSM) was created from the State of Connecticut 2016 LiDAR LAS data points. The DSM captures the natural and built features on the Earth's surface.

Municipal Open Space, State Recreation Areas, Trails, County Recreation Areas, and Town Boundary data obtained from CT DEEP. Scenic Roads: CTDOT State Scenic Highways (2015); Municipal Scenic Roads (compiled by APT)

Dedicated Open Space & Recreation Areas
 Connecticut Department of Energy and Environmental Protection (DEEP): DEEP Property (May 2007); Federal Open Space (1997); Municipal and Private Open Space (1997); DEEP Boat Launches (1994)

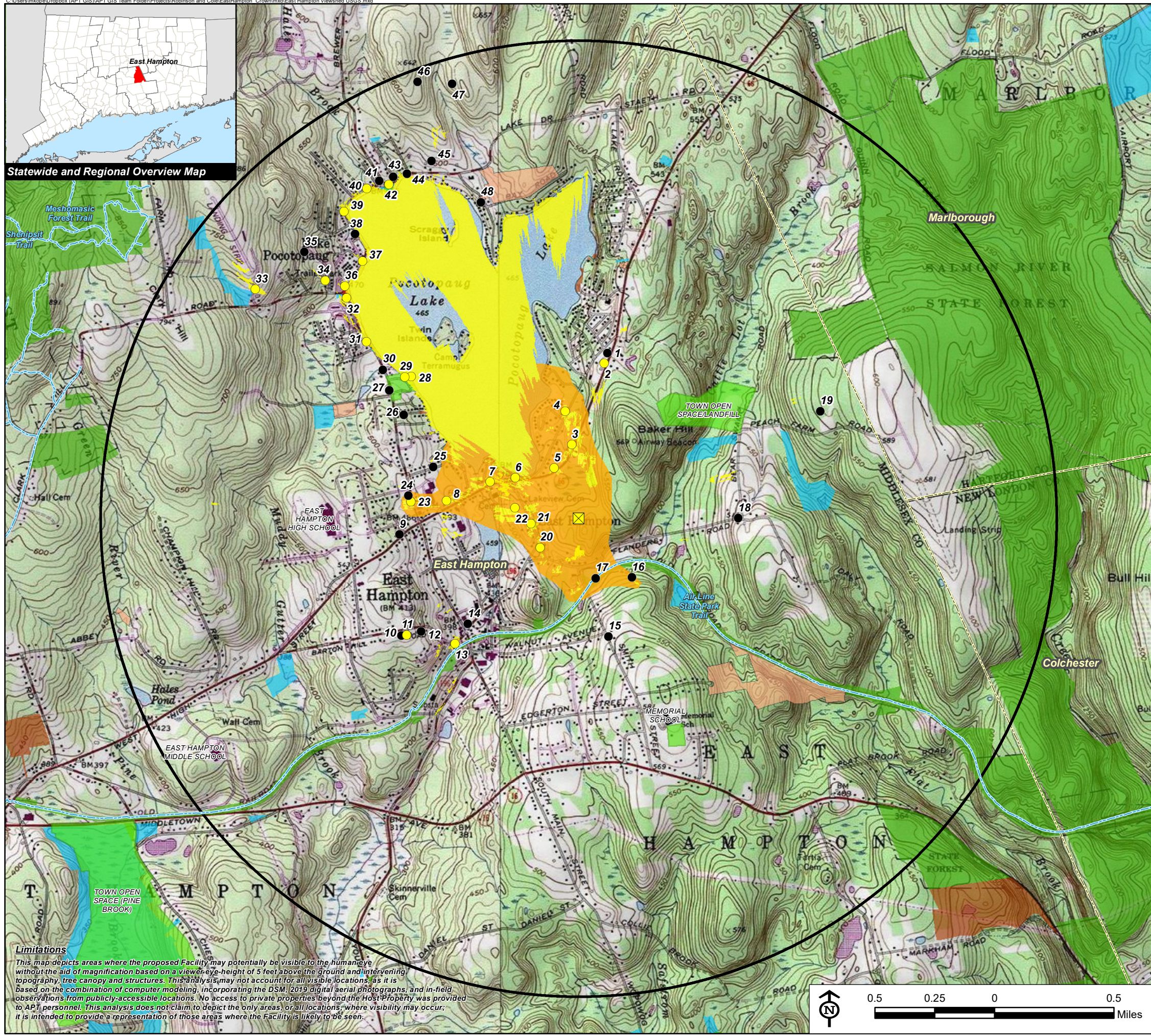
Connecticut Forest & Parks Association, Connecticut Walk Books East & West

Other
 CTDOT Scenic Strips (based on Department of Transportation data)

Notes

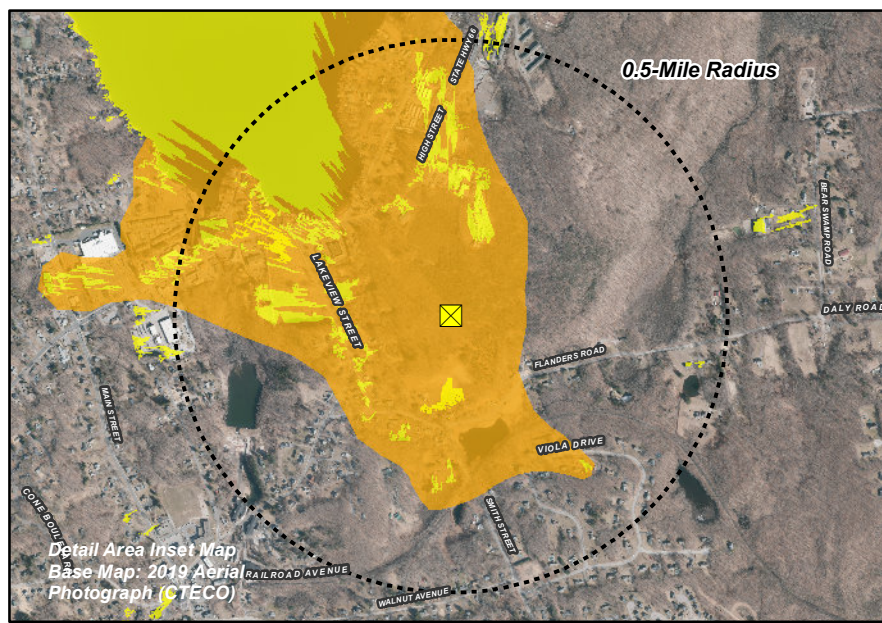
**Not all the sources listed above appear on the Viewshed Maps. Only those features within the scale of the graphic are shown.

Limitations
 This map depicts areas where the proposed Facility may potentially be visible to the human eye without the aid of magnification based on a viewer eye-height of 5 feet above the ground and intervening topography, tree canopy and structures. This analysis may not account for all visible locations, as it is based on the combination of computer modeling incorporating the DSM, 2019 digital aerial photographs, and in-field observations from publicly-accessible locations. No access to private properties beyond the Host Property was provided to APT personnel. This analysis does not claim to depict the only areas, or all locations, where visibility may occur; it is intended to provide a representation of those areas where the Facility is likely to be seen.



Statewide and Regional Overview Map

Limitations
 This map depicts areas where the proposed Facility may potentially be visible to the human eye without the aid of magnification based on a viewer-eye-height of 5 feet above the ground and intervening topography, tree canopy and structures. This analysis may not account for all visible locations, as it is based on the combination of computer modeling, incorporating the DSM, 2019 digital aerial photographs, and in-field observations from publicly-accessible locations. No access to private properties beyond the Host Property was provided to APT personnel. This analysis does not claim to depict the only areas, or all locations, where visibility may occur; it is intended to provide a representation of those areas where the Facility is likely to be seen.



Detail Area Inset Map
 Base Map: 2019 Aerial Photograph (CTECO)

Viewshed Analysis Map

Proposed Wireless Telecommunications Facility
 Site Number 876352
 8 1/2 Lakeview Street
 East Hampton, Connecticut

Proposed facility height is 250 feet AGL.
 Forest canopy height is derived from LIDAR data.
 Study area encompasses a two-mile radius and includes 8,042 acres.
 Map information field verified by APT on July 24, 2020
 Base Map Source: USGS 7.5 Minute Topographic Quadrangle Maps, Middle Haddam, CT (1984) and Moodus, CT (1973)
 Map Date: August 2020

Legend

- Proposed Site
- Study Area (2-Mile Radius)
- Predicted Year-Round Visibility (443 Acres; +/- 410 acres occurs over Pocotopaug Lake)
- Areas of Potential Seasonal Visibility (239 Acres)
- Municipal Boundary
- Photo Locations (July 24, 2020)
 - Not Visible
 - Year-Round
- Trail
- Scenic Highway
- DEEP Boat Launches
- Municipal and Private Open Space Property
- State Forest/Park
- Protected Open Space Property**
 - Federal
 - Land Trust
 - Municipal
 - Private
 - State

Data Sources:

Physical Geography / Background Data
 A digital surface model (DSM) was created from the State of Connecticut 2016 LiDAR LAS data points. The DSM captures the natural and built features on the Earth's surface.

Municipal Open Space, State Recreation Areas, Trails, County Recreation Areas, and Town Boundary data obtained from CT DEEP. Scenic Roads: CTDOT State Scenic Highways (2015); Municipal Scenic Roads (compiled by APT)

Dedicated Open Space & Recreation Areas
 Connecticut Department of Energy and Environmental Protection (DEEP): DEEP Property (May 2007); Federal Open Space (1997); Municipal and Private Open Space (1997); DEEP Boat Launches (1994)

Connecticut Forest & Parks Association, Connecticut Walk Books East & West

Other
 CTDOT Scenic Strips (based on Department of Transportation data)

Notes

**Not all the sources listed above appear on the Viewshed Maps. Only those features within the scale of the graphic are shown.

