

# **EAST HAMPTON RELO**

**Lakeview Street  
East Hampton, Connecticut**

Description of Proposed Cell Site

Global Signal Acquisitions IV LLC and Crown Castle Towers 06-02 LLC  
3 Corporate Park Drive, Suite 101  
Clifton Park, NY 12065

SITE NAME: EAST HAMPTON RELO – LAKEVIEW STREET, EAST HAMPTON CT

GENERAL CELL SITE DESCRIPTION

The proposed East Hampton Relo Facility would be located in the central portion of an approximately 17.37-acre parcel owned by Richard Anderson. The facility would consist of a 250-foot self-supporting monopole telecommunications tower and associated equipment located within a 75' x 75' fenced compound and 100' x 100' leased area.

Antennas and associated wireless equipment will be attached to the tower at the 246-foot level (Sprint); 234-foot level (Verizon); 222-foot level (AT&T); and 210-foot level (T-Mobile). Equipment associated with the Wireless Carriers' antennas will be located on the ground near the base of the tower. Vehicular access to the facility would extend from East High Street over a new gravel access driveway, a distance of approximately 1366 feet. Utility service would also extend from existing service along East High Street.





Copyright © 2013 National Geographic Society, i-cubed

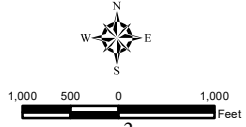
**Legend**

- Site
- Municipal Boundary

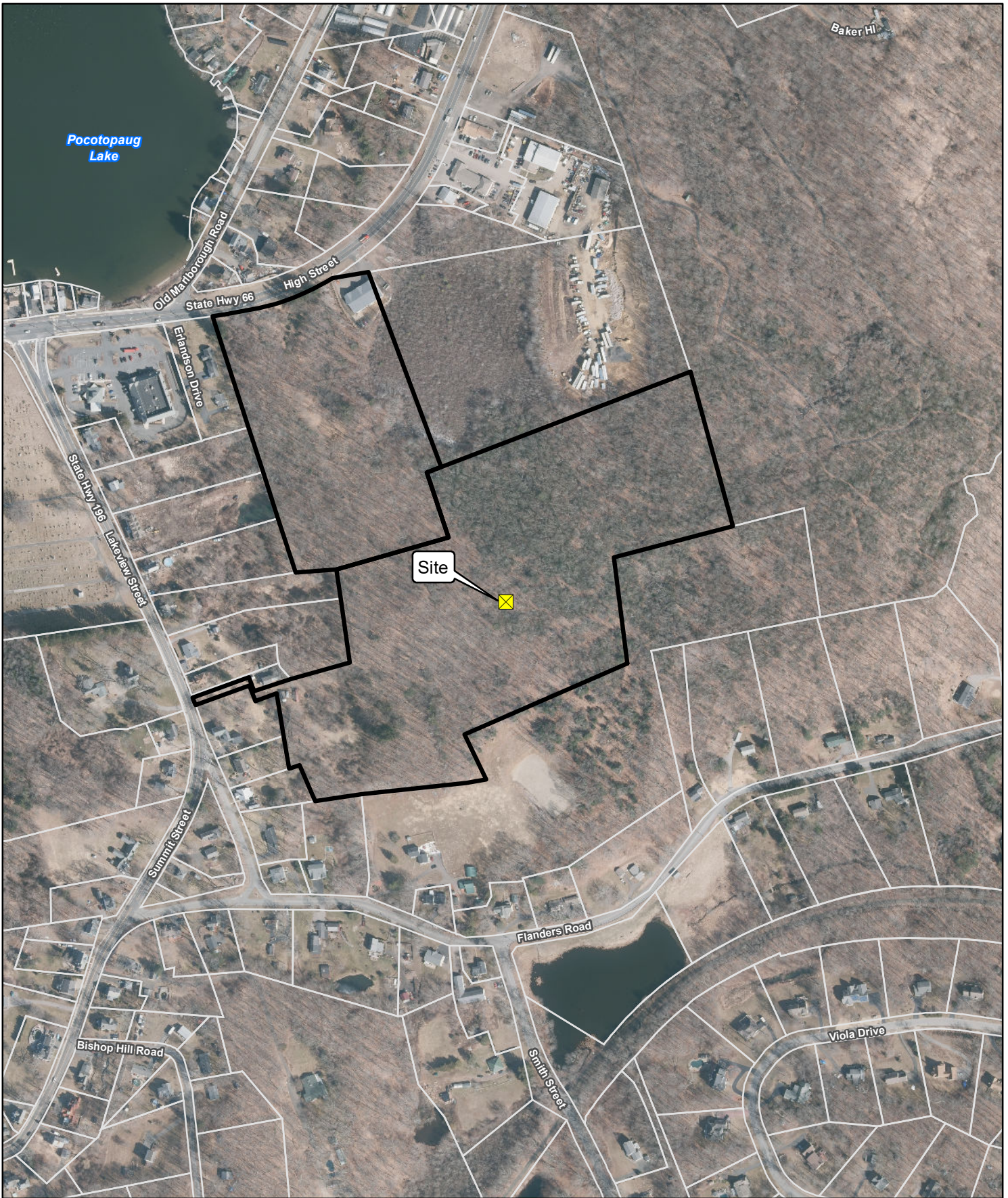
**Site Location Map**

Proposed Wireless  
Telecommunications Facility  
Site Number 876352  
8 1/2 Lakeview Street  
East Hampton, Connecticut




**Map Notes:**  
Base Map Source: USGS 7.5 Minute Topographic  
Quadrangle Maps, Middle Haddam, CT (1984)  
and Moodus, CT (1973)  
Map Date: June 2020



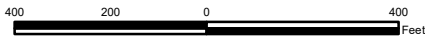




**Legend**

-  Site
-  Subject Property
-  Approximate Parcel Boundary (CTDEEP)

*Map Notes:*  
 Base Map Source: CT ECO 2019 Imagery  
 Map Scale: 1 inch = 400 feet  
 Map Date: June 2020



**Site Location Map**

Proposed Wireless  
 Telecommunications Facility  
 Site Number 876352  
 8 1/2 Lakeview Street  
 East Hampton, Connecticut





## SITE EVALUATION REPORT

SITE NAME: EAST HAMPTON RELO FACILITY – LAKEVIEW STREET, EAST HAMPTON, CONNECTICUT

### I. TOWER LOCATION

- A. COORDINATES: 41°-34'-56.92" N 72°-29'-35.29" W
- B. GROUND ELEVATION: Approximately 523± feet AMSL
- C. U.S.G.S. QUADRANGLE MAP: Middle Haddam, CT
- D. SITE ADDRESS: Lakeview Street, East Hampton, CT 06424
- E. ZONING WITHIN 1/4 MILE OF SITE: Land within ¼ mile of the proposed tower site is in East Hampton's R-4 and R-1 Residential zones.

### II. DESCRIPTION

- A. SITE SIZE: 75' x 75' fenced compound
- B. LESSOR'S PARCEL: Approximately 17.37 acres
- C. TOWER TYPE/HEIGHT: 250' Monopole Tower
- D. SITE TOPOGRAPHY AND SURFACE: Topography in the area slopes down generally from south to north on the Property. Grading required to construct the access drive and tower facility compound will be moderate.
- E. SURROUNDING TERRAIN, VEGETATION, WETLANDS, OR WATER: The tower would be located in the central portion of an approximately 17.37-acre vacant parcel. There are no wetlands or watercourses on the Property that will be directly impacted by development of the access driveway or facility compound. Several mature trees will need to be removed to accommodate the development of the new telecommunications facility.
- F. LAND USE WITHIN 1/4 MILE OF SITE: The 17.37-acre subject parcel is surrounded by forested vacant parcels, commercial uses to the north and west along East High Street and residential uses to the south. (See Site Location Map at p. 3).

III. FACILITIES

- A. POWER COMPANY: Eversource
- B. POWER PROXIMITY TO SITE: Approximately 1366 feet to the north of the facility compound along East High Street.
- C. TELEPHONE/FIBER CONNECTION: TBD
- D. VEHICLE ACCESS TO SITE: Vehicle access to the site would extend from East High Street over a portion of a new gravel driveway, a distance of approximately 1366 feet.
- E. CLEARING AND FILL REQUIRED: The total area of disturbance necessary to construct the proposed telecommunications facility and access driveway is approximately 1.5 acres. Detailed construction plans would be developed if the telecommunications facility is approved by the Siting Council.

IV. LEGAL

- A. OWNER: Richard M. Anderson
- B. OWNER'S ADDRESS: Lakeview Street, East Hampton, CT
- C. DEED ON FILE AT: Town of East Hampton, CT Land Records

FACILITIES AND EQUIPMENT SPECIFICATION  
(NEW TOWER & EQUIPMENT)

SITE NAME: EAST HAMPTON RELO FACILITY – LAKEVIEW STREET, EAST HAMPTON, CONNECTICUT

I. TOWER SPECIFICATIONS:

A. MANUFACTURER: To be determined

B. TYPE: Self-supporting monopole

C. TOWER HEIGHT: 250'

TOWER DIMENSIONS:     Approx. 60" base  
                                  Approx. 24" top

II. ENGINEERING ANALYSIS AND CERTIFICATION:

The towers will be designed in accordance with Electronic Industries Association Standard TIA-222-H and G-2 "Structural Standards for Steel Antenna Towers and Antenna Support Structures." The foundation designs would be based on soil conditions at the site. Details for the towers and foundation designs will be provided as a part of the final D&M Plan.

## ENVIRONMENTAL ASSESSMENT STATEMENT

SITE NAME: EAST HAMPTON RELO FACILITY – LAKEVIEW STREET, EAST HAMPTON, CONNECTICUT

### I. PHYSICAL IMPACT

#### A. WATER FLOW AND QUALITY

No water flow and/or water quality changes are anticipated as a result of the construction or operation of the facility. No direct impacts to any lakes, ponds, rivers, streams, wetlands or other regulated bodies of water are anticipated. Cell site equipment used will not discharge any pollutants to area surface or groundwater systems.

#### B. AIR QUALITY

Under ordinary operating conditions, the wireless equipment at the East Hampton Relo Facility would generate no air emissions. During power outages and periodically for maintenance purposes, the Wireless Carriers may utilize emergency back-up power. Any backup generator will need to be managed to comply with the “permit by rule” criteria established by the Connecticut Department of Energy and Environmental Protection (“DEEP”) Bureau of Air Management, pursuant to R.C.S.A. § 22a-174-3b.

#### C. LAND

Mature trees (greater than 6” diameter at breast height) and ground-level vegetation will need to be cleared and site grading of the tower compound and access drive will be required to accommodate the new telecommunications facility and access driveway.



D. NOISE

The equipment to be in operation at the site after construction would emit no noise of any kind, except for the occasional operation of a backup generator which, if present, would only run when commercial power to the facility is interrupted and periodically for maintenance purposes. Some noise is anticipated during cell site construction.

E. POWER DENSITY

The highest cumulative calculated power density from the East Hampton Relo Facility would be 1.9% of the FCC General Population Maximum Permissible Exposure (MPE) limits. (See Attachment 13).

F. VISIBILITY

See Visibility Report included as Attachment 7.