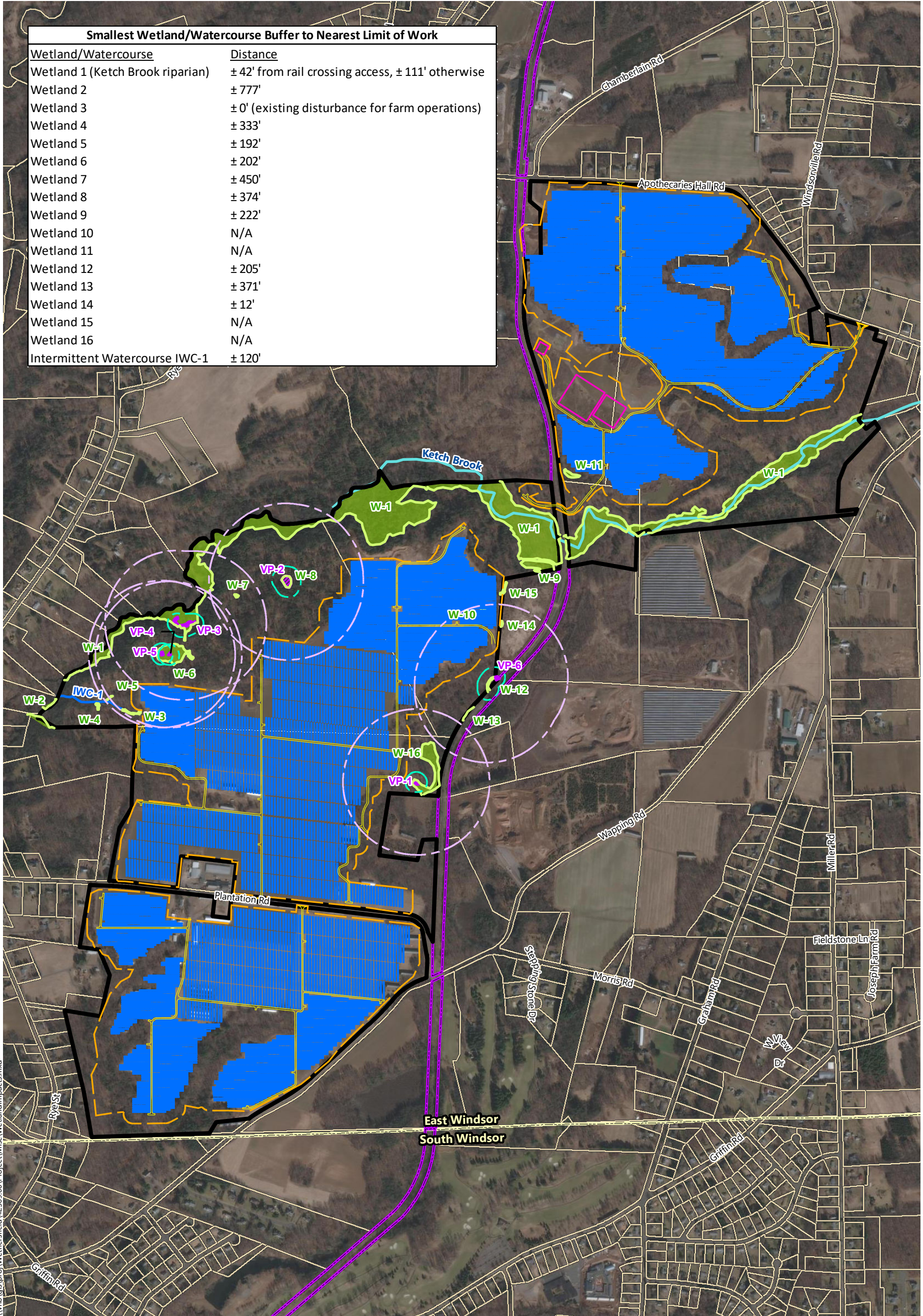


Smallest Wetland/Watercourse Buffer to Nearest Limit of Work	
Wetland/Watercourse	Distance
Wetland 1 (Ketch Brook riparian)	± 42' from rail crossing access, ± 111' otherwise
Wetland 2	± 777'
Wetland 3	± 0' (existing disturbance for farm operations)
Wetland 4	± 333'
Wetland 5	± 192'
Wetland 6	± 202'
Wetland 7	± 450'
Wetland 8	± 374'
Wetland 9	± 222'
Wetland 10	N/A
Wetland 11	N/A
Wetland 12	± 205'
Wetland 13	± 371'
Wetland 14	± 12'
Wetland 15	N/A
Wetland 16	N/A
Intermittent Watercourse IWC-1	± 120'



\\vhb\gis\proj\Wethersfield\42569.00\Project\Misc\WetlandImpacts.mxd



Gravel Pit Solar

East Windsor, Connecticut

- Property Boundary
- Solar Array
- Connecticut Inland Wetlands
- Adjacent Parcels
- Proposed Access Roads
- Delineated Wetland Edge
- Town Boundary
- Proposed Substation
- Vernal Pool
- Approximate Railroad ROW
- Limits of Work
- Stream/River
- 100-Foot Vernal Pool Envelope
- Delineated Intermittent Watercourse
- 750-Foot Critical Terrestrial Habitat

Wetland Impact Map

Source: VHB, CTDEEP, ESRI