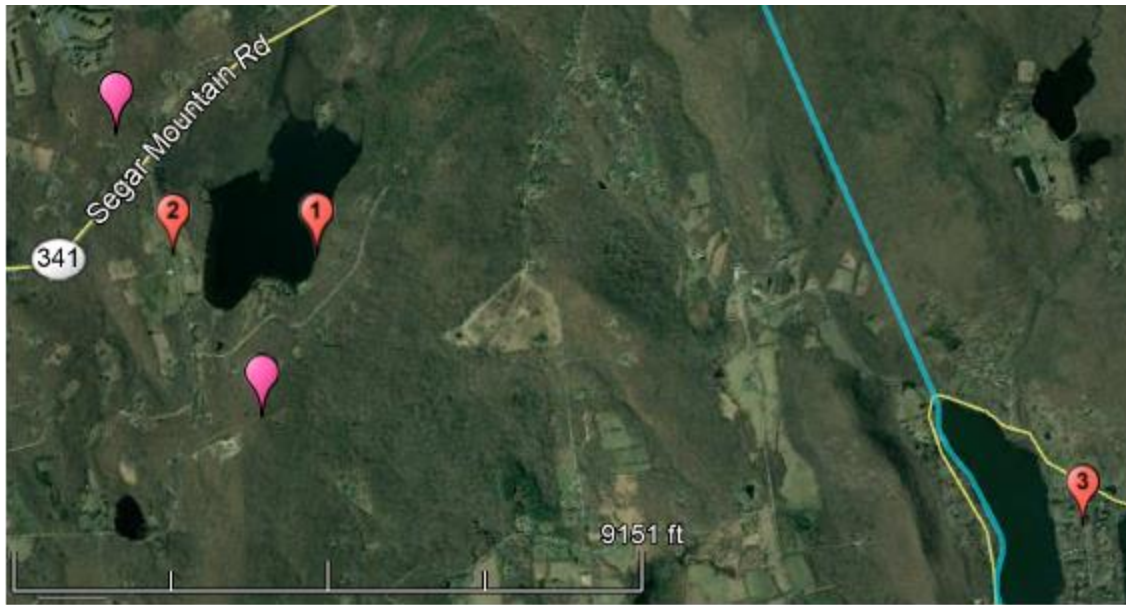


The RR PDA balloon was 466 feet on a bearing of 51.5 degrees true north from the tower location proposed.

At the PDA balloon float location (e.g. 22 Richards Rd or 49 Spectacle Ridge Rd) there is only a 7 degree offset between the balloon location and the proposed tower location from the viewer's point of view.



Here is a close-up of the Richards Rd site with the Homeland Towers (HT) and PDA balloon sites.



Aerial photomap containing the locations of the photographs taken (red markers 1, 2 and 3) .

For the photo taken at location 3 near Lake Waramaug, the point of view offset to Bald Hill tower versus PDA balloon is 0.5 degrees and to the Richards Road tower vs PDA balloon is 1.7 degrees.

Pink markers are PDA balloon sites. Red markers are the three photo sites (49 SRR, 22 RR, 12 AP, numbered respectively)

