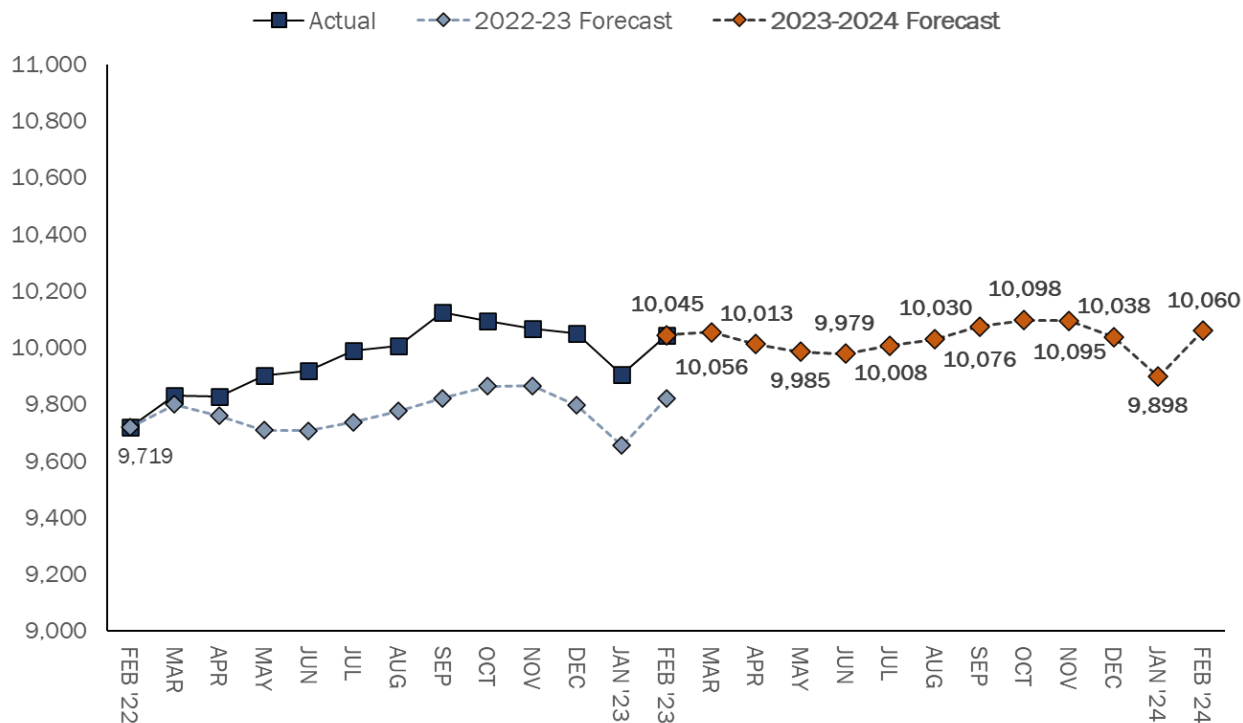


CORRECTIONAL POPULATION

2023-24 FORECAST

Connecticut Correctional Facility Population:
 Actual and Projected, February 2022 to February 2024



Note: The y-axis begins at 9,000 instead of 0 to better show the monthly variation in projected amounts.

Developing the 2023-2024 Forecast

Each February, the Office of Policy and Management Criminal Justice Policy & Planning Division (OPM CJPPD) forecasts the state’s total correctional population over the subsequent 12 months. To develop the 2023-2024 forecast, OPM again utilized an expanded forecasting approach. OPM’s methodology has traditionally included: 1) an analysis of prison-population trend data 2) the use of an input-output model to track operational flows and rates of change in the size and composition of the prison population, and 3) assessments of the impact of proposed legislative and policy changes. In 2022, to better contextualize COVID-19 pandemic disruptions to long term trends in Connecticut’s criminal justice system, OPM augmented its traditional approach with additional time series methodologies. OPM’s current forecast utilized these multiple approaches to generate a variety of forecast estimates, then developed a composite forecast incorporating these results.

The OPM CJPPD forecast aims to aid in setting near-term system expectations. In the upcoming year, OPM CJPPD anticipates the correctional population to remain broadly consistent and return to typical seasonal fluctuations. OPM CJPPD will, however, continue to monitor correctional population changes on a monthly basis over the year ahead.

This brief was produced by the Criminal Justice Policy and Planning Division at:

The Connecticut Office of Policy and Management
 450 Capitol Avenue
 Hartford, CT, 06106

The **2023-2024 Forecast** will be presented to the Criminal Justice Policy Advisory Commission in March 2022.

This report can be found on the OPM CJPPD website:

<https://portal.ct.gov/OPM/CJ-About/CJ-SAC/SAC-Sites/SAC-Homepage>.

