

MONTHLY INDICATORS REPORT

Summary of Connecticut Criminal Justice System Trends

Key Metrics

(Percent change from prior month)

December Monthly Totals

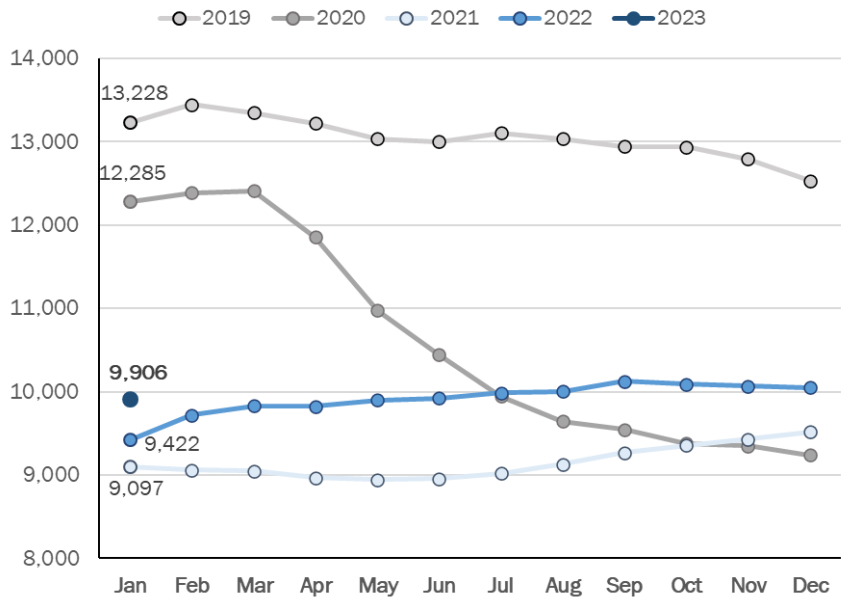
- Criminal Arrests:**
7,510 ↑ (+5.1%)
- Arraignments:**
2,211 ↓ (-3.5%)
- DOC Admissions:**
1,188 ↓ (-4.4%)
- DOC Releases & Discharges:**
742 ↑ (+4.8%)

January 1 Counts

- DOC Facility:**
9,906 ↓ (-1.4%)
- Pretrial:
3,443 ↓ (-2.3%)
- Sentenced:
6,113 ↔ (<1.0%)
- DOC Community Supervision:**
3,059 ↔ (<1.0%)

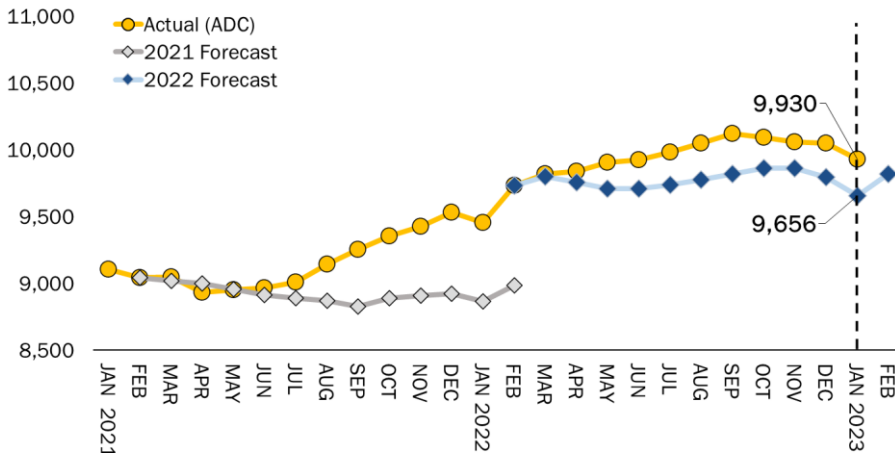
First-of-the-Month DOC Facility Population

A comparison of up to five years shown by month



Correction Population Forecast

Forecast period: March 2022 – February 2023

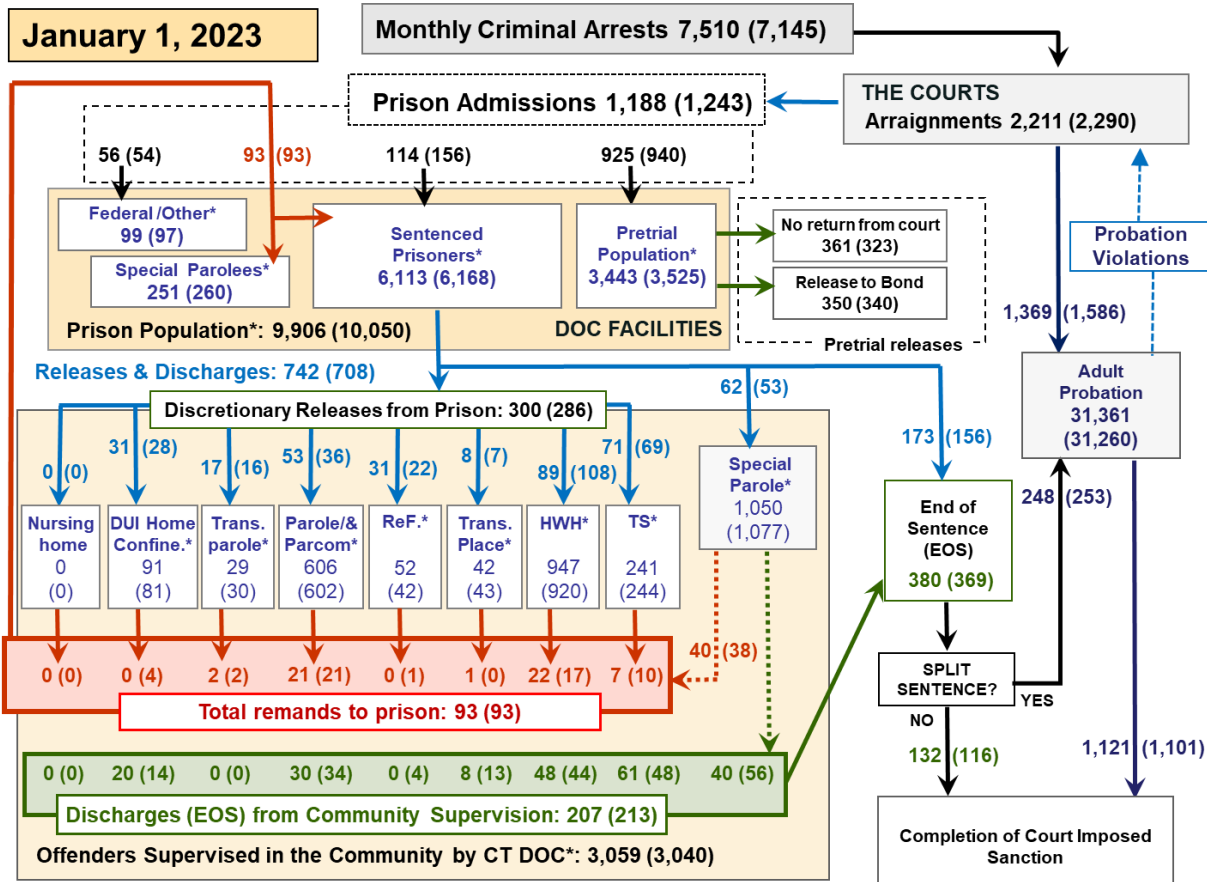


WEEK OF JANUARY 1, 2023

- **DOC Average Facility Count:**
9,930
- **OPM Population Estimate:**
9,656
- **Difference from OPM Forecast:**
274 + 2.6%

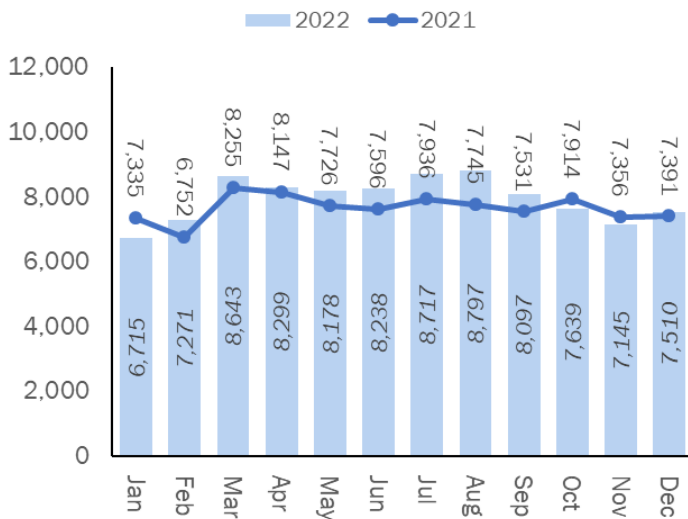


Criminal Justice System Monthly Counts & Flow Chart

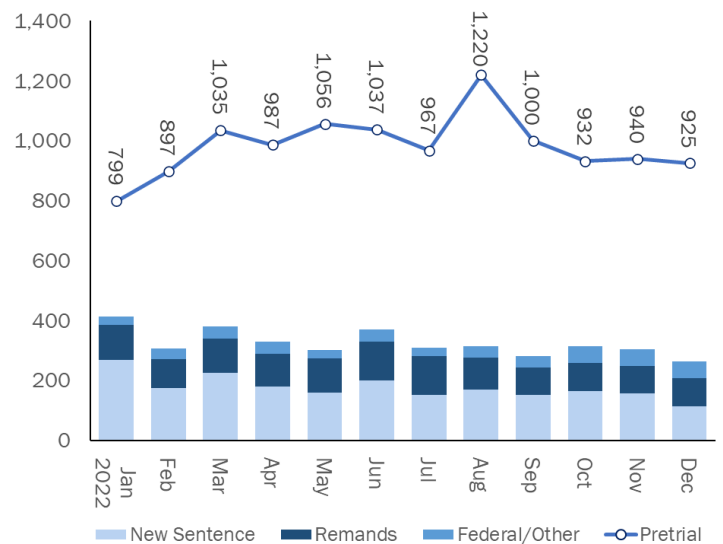


This flowchart contains monthly operations data for December 2022 and daily counts reported on January 1, 2023. Asterisks (*) indicate the daily count on January 1. Figures from last month are enclosed by parentheses.

Statewide Arrests: 2021 & 2022



Monthly DOC Admissions: 2022



Note: Data in the chart above show new case starts in the state Criminal Motor Vehicle System (CRMVS).

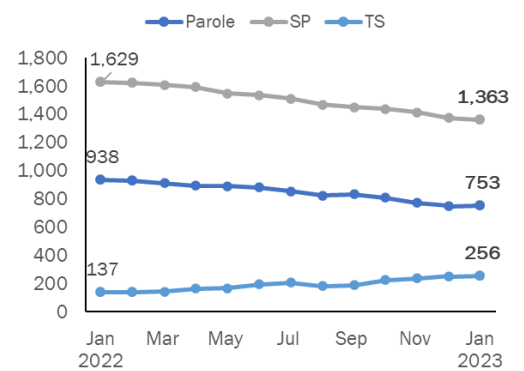


Department of Correction

First-of-the-Month Totals

	2022	2022	2023	2022	% Change	
	Nov. 1	Dec. 1	Jan. 1	Jan. 1	Monthly	Annual
DOC Facilities						
Federal/Other	112	97	99	100	2.1%	-1.0%
Sentenced	6,129	6,168	6,113	5,400	-0.9%	13.2%
Special Parole	268	260	251	332	-3.5%	-24.4%
Pretrial	3,559	3,525	3,443	3,590	-2.3%	-4.1%
Total	10,068	10,050	9,906	9,422	-1.4%	5.1%
DOC Community						
Transfer Parole	27	30	29	56	-3.3%	-48.2%
Parole/ Parcom Total	619	602	606	797	0.7%	-24.0%
Parole	472	459	459	636	0.0%	-27.8%
Parcom @ CT	147	143	147	161	2.8%	-8.7%
Furlough	44	42	52	22	23.8%	136.4%
Trans Placement	47	43	42	42	-2.3%	0.0%
DUI/Home confine.	75	81	91	59	12.3%	54.2%
Halfway House Total	904	920	947	815	2.9%	16.2%
Comm Release	416	448	447	359	-0.2%	24.5%
TS	8	8	15	15	87.5%	0.0%
Parole	154	148	147	141	-0.7%	4.3%
Transfer Parole	17	17	25	20	47.1%	25.0%
Special Parole	309	299	313	280	4.7%	11.8%
TS	230	244	241	122	-1.2%	97.5%
Nursing home	0	0	0	0	-	-
Special Parole	1,105	1,077	1,050	1,349	-2.5%	-22.2%
Total	3,051	3,039	3,059	3,262	0.7%	-6.2%

DOC Community Supervision: First-of-the-Month Totals



Bond Ranges for Pretrial Detainees

Bond amount	Nov. 1, 2022	Dec. 1, 2022	Jan. 1, 2023	Jan. 1, 2022
Less than \$20K	395	415	393	417
\$20K to < \$50K	438	405	385	449
\$50K to < \$100K	483	494	491	591
\$100K or higher	2,387	2,338	2,345	2,371
Persons w/bonds	3,703	3,652	3,614	3,828
Over \$1M	486	490	509	424

Pretrial, Weeks held since admission

Weeks since last DOC admit	Nov. 1, 2022	Dec. 1, 2022	Jan. 1, 2023	Jan. 1, 2022
< 1 week	314	263	293	235
1 to < 3 weeks	256	250	243	216
3 to < 10 weeks	688	688	660	721
10 to < 30 weeks	1,035	1,081	1,010	1,115
30 wks or more	1,413	1,379	1,413	1,542
Pretrial prisoners	3,706	3,661	3,619	3,829

Judicial Branch Court Support Services Division

The Jail Reinterview Program

	Pretrial admissions	Offender interviews	Offenders released	Released last year
OCT	932	991	240	238
NOV	940	919	252	200
DEC	925	926	268	231

Pretrial Bail and Probation Caseloads

	Pretrial bail case starts	Client supv. starts	Split sentence starts	Pretrial bail cases*
OCT	2,305	1,520	235	13,881
NOV	2,263	1,586	253	13,789
DEC '22	2,173	1,369	248	13,555
DEC '21	2,152	1,498	231	13,683

* Reflects open cases as of the first of the month.



Department of Correction

Monthly Totals

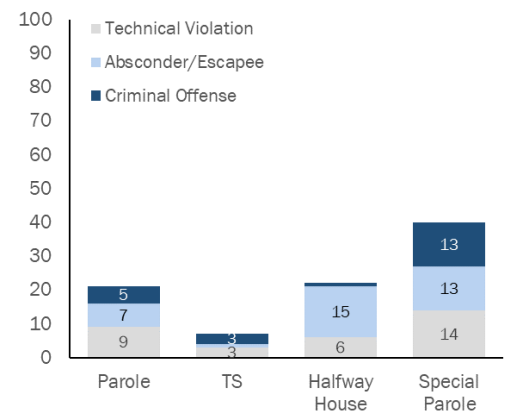
	2022	2022	2022	2021	% Change	
	OCT	NOV	DEC	DEC	Monthly	Annual
Admissions						
Federal/Other	56	54	56	22	3.7%	154.5%
Remands	95	93	93	105	0.0%	-11.4%
DUI	2	4	0	2	-100.0%	-100.0%
Transfer Parole	1	2	2	1	0.0%	100.0%
Parole	18	21	21	23	0.0%	-8.7%
Trans Plac/Furlough	0	1	1	1	0.0%	0.0%
HWH	26	17	22	24	29.4%	-8.3%
TS	8	10	7	4	-30.0%	75.0%
Special Parole	40	38	40	50	5.3%	-20.0%
New Sentence	164	156	114	82	-26.9%	39.0%
VOP	30	37	23	12	-37.8%	91.7%
Pretrial	932	940	925	855	-1.6%	8.2%
Total	1,247	1,243	1,188	1,064	-4.4%	11.7%
Releases and discharges						
Transfer Parole	11	16	17	14	6.3%	21.4%
Parole	36	36	53	53	47.2%	0.0%
Furlough	30	22	31	15	40.9%	106.7%
Trans. Placement	17	7	8	8	14.3%	0.0%
Home Confinement DUI	23	28	31	20	10.7%	55.0%
HWH	125	108	89	87	-17.6%	2.3%
TS	63	69	71	38	2.9%	86.8%
Special Parole	62	53	62	87	17.0%	-28.7%
Nursing home	0	0	0	0	-	-
End of Sentence	381	369	380	334	3.0%	13.8%
Total	748	708	742	656	4.8%	13.1%
Pretrial Releases*						
From Court	334	323	361	239	11.8%	51.0%
Release to Bond	319	340	350	368	2.9%	-4.9%

* Totals reflect events, not individual offenders

Pretrial Admissions, New to DOC:

	OCT 2022	NOV 2022	DEC 2022	DEC 2021
Arraignments	2,282	2,290	2,211	2,018
Pretrial Admits	932	940	925	855
New to DOC	236	239	254	226
% New	25%	25%	27%	26%

Remands from Community Release



Board of Pardons and Paroles

Parole Hearings: New Cases

	Parole hearings	Paroles granted	Grant rate	Granted: prior year	Granted: two years prior
OCT	96	67	70%	49	78
NOV	85	48	56%	47	36
DEC	75	44	59%	51	65

Other BOPP Actions

	Reparole from revocation	Early Termination		Special parole discharges	Transfer parole approvals
		Discretionary parole	Special parole		
OCT	50	13	24	14	25
NOV	32	13	22	10	13
DEC	36	5	16	18	20

DOC: Community Release Unit

Case Reviews and Release Metrics

	Cases reviewed	Approved	Denied	Continued	Approval rate
OCT	502	236	36	137	47%
NOV	479	223	49	129	47%
DEC '22	453	237	44	97	52%
DEC '21	312	138	36	54	44%

Monthly data sources: CRMVS via CJIS (arrests), JB CSSD (court and probation figures), BOPP and the DOC.

This report produced by the [Criminal Justice Policy & Planning Division Research Unit](#) at:

The Connecticut Office of Policy and Management
450 Capitol Avenue, Hartford CT, 06106

