

# MONTHLY INDICATORS REPORT

## Summary of Connecticut Criminal Justice System Trends

### Key Metrics

(Percent change from prior month)

#### July Monthly Totals

**Criminal Arrests:**  
 8,568 ↑ (+6.8%)

**Arraignments:**  
 2,574 ↓ (-3.4%)

**DOC Admissions:**  
 1,420 ↔ (+0.1%)

**DOC Releases & Discharges:**  
 809 ↑ (+10.4%)

#### August 1 Counts

**DOC Facility:**  
 10,212 ↔ (+0.7%)

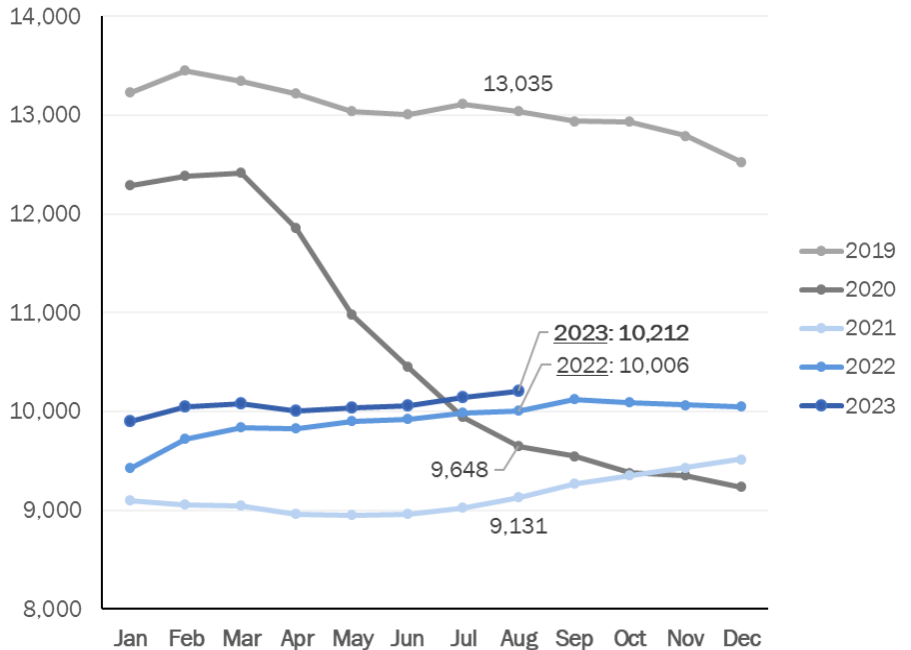
**Pretrial:**  
 3,352 ↔ (+0.8%)

**Sentenced:**  
 6,528 ↑ (+1.0%)

**DOC Community Supervision:**  
 2,971 ↓ (-1.2%)

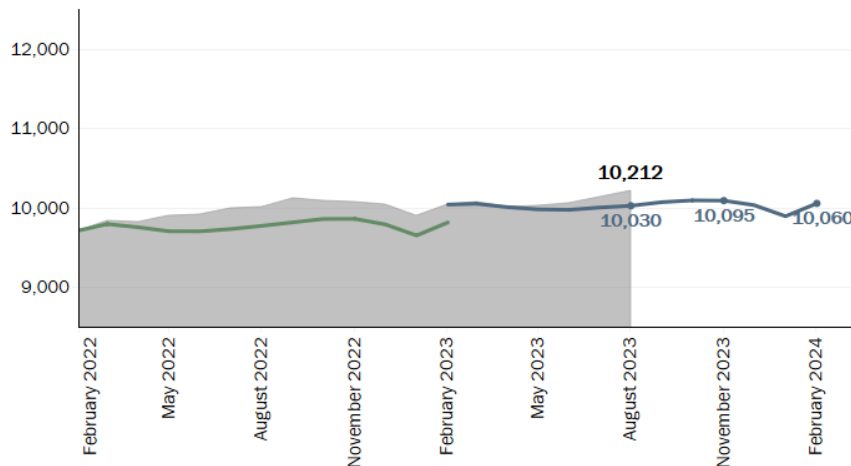
### First-of-the-Month DOC Facility Population

A comparison of up to five years shown by month



### Correction Population Forecast

Forecast period: March 2023 – February 2024



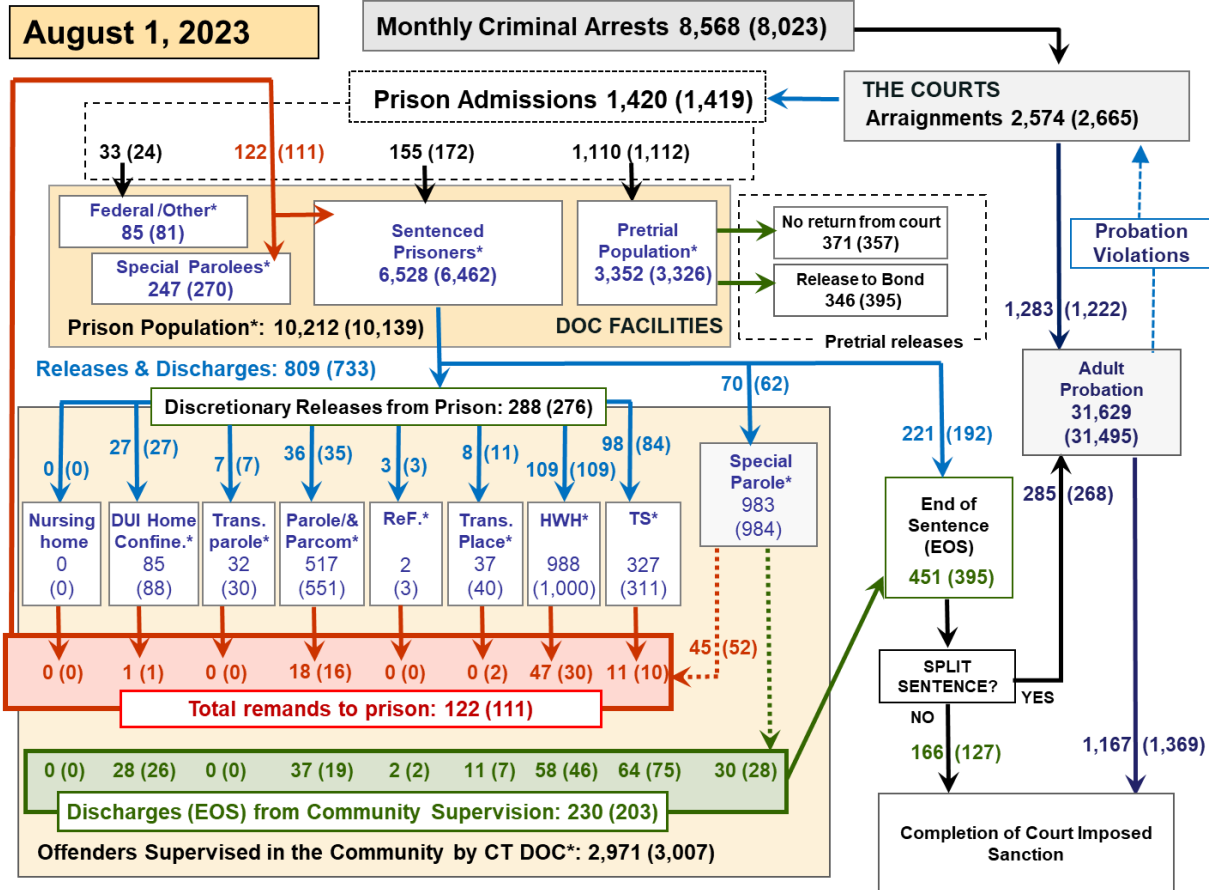
### WEEK OF AUGUST 1, 2023

- **OPM Population Estimate:**  
10,030
- **DOC Facility Count:**  

<b>August 1</b>	10,212
<b>First Week Avg.</b>	10,190
- **Difference from OPM Forecast:**
  - First of the Month  
182      **1.8%**
  - First Week Avg.  
135      **1.6%**

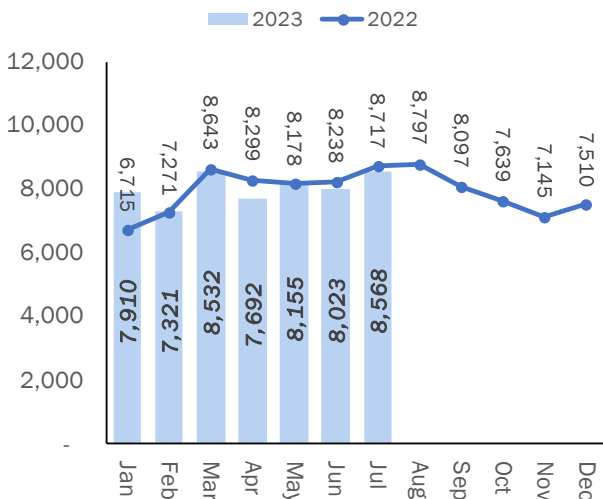


### Criminal Justice System Monthly Counts & Flow Chart

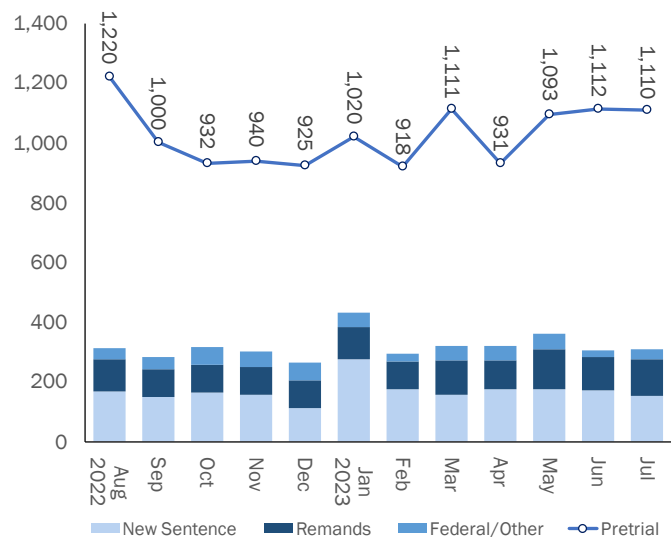


This flowchart contains monthly operations data for July 2023 and daily counts reported on August 1, 2023. Asterisks (\*) indicate the daily count on August 1. Figures from last month are enclosed by parentheses.

#### Statewide Arrests: 2022 & 2023



#### Monthly DOC Admissions: 2022 & 2023



Note: Data in the chart above show new case starts in the state Criminal Motor Vehicle System (CRMVS).

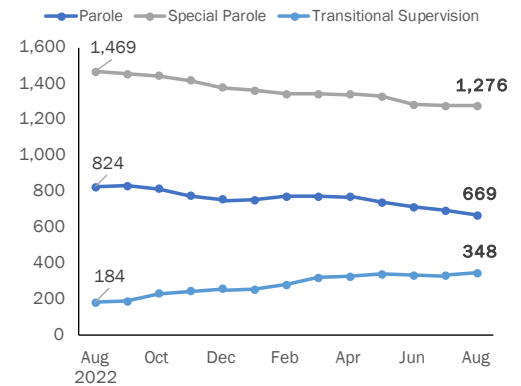


## Department of Correction

### First-of-the-Month Totals

	2023 Jun. 1	2023 Jul. 1	2023 Aug. 1	2022 Aug. 1	% Change	
					Monthly	Annual
<b>DOC Facilities</b>						
Federal/Other	98	81	85	112	4.9%	-24.1%
Sentenced	6,394	6,462	6,528	6,000	1.0%	8.8%
Special Parole	268	270	247	297	-8.5%	-16.8%
Pretrial	3,298	3,326	3,352	3,597	0.8%	-6.8%
<b>Total</b>	<b>10,058</b>	<b>10,139</b>	<b>10,212</b>	<b>10,006</b>	<b>0.7%</b>	<b>2.1%</b>
<b>DOC Community</b>						
Transfer Parole	37	30	32	37	6.7%	-13.5%
Parole/ Parcom Total	557	551	517	665	-6.2%	-22.3%
Parole	420	416	388	520	-6.7%	-25.4%
Parcom @ CT	137	135	129	145	-4.4%	-11.0%
Furlough	3	3	2	42	-33.3%	-95.2%
Trans Placement	40	40	37	34	-7.5%	8.8%
DUI/Home confine.	90	88	85	69	-3.4%	23.2%
Halfway House Total	1,007	1,000	988	828	-1.2%	19.3%
Comm Release	521	523	502	368	-4.0%	36.4%
Transitional Supervision	24	21	21	10	0.0%	110.0%
Parole	157	144	152	159	5.6%	-4.4%
Transfer Parole	19	20	20	18	0.0%	11.1%
Special Parole	286	292	293	273	0.3%	7.3%
Transitional Supervision	311	311	327	174	5.1%	87.9%
Nursing home	0	0	0	1	-	-100.0%
Special Parole	1,000	984	983	1,196	-0.1%	-17.8%
<b>Total</b>	<b>3,045</b>	<b>3,007</b>	<b>2,971</b>	<b>3,046</b>	<b>-1.2%</b>	<b>-2.5%</b>

### DOC Community Supervision: First-of-the-Month Totals



### Bond Ranges for Pretrial Detainees

Bond amount	Jun. 1, 2023	Jul. 1, 2023	Aug. 1, 2023	Aug. 1, 2022
Less than \$20K	371	417	411	428
\$20K to < \$50K	380	371	374	429
\$50K to < \$100K	439	436	424	537
\$100K or higher	2,266	2,243	2,237	2,406
Persons w/bonds	3,456	3,467	3,446	3,800
Over \$1M	530	539	545	461

### Pretrial, Weeks held since admission

Weeks since last DOC admit	Jun. 1, 2023	Jul. 1, 2023	Aug. 1, 2023	Aug. 1, 2022
< 1 week	301	312	314	371
1 to < 3 weeks	263	286	328	279
3 to < 10 weeks	677	696	691	718
10 to < 30 weeks	911	905	880	988
30 wks or more	1,311	1,278	1,239	1,449
Pretrial prisoners	3,463	3,477	3,452	3,805

## Judicial Branch Court Support Services Division

### The Jail Reinterview Program

	Pretrial admissions	Offender interviews	Offenders released	Released last year
MAY	1,093	977	244	259
JUN	1,112	1,038	262	253
JUL	1,110	941	241	258

### Pretrial Bail and Probation Caseloads

	Pretrial bail case starts	Client supv. starts	Split sentence starts	Pretrial bail cases*
MAY	2,602	1,421	311	13,123
JUN	2,534	1,222	268	12,990
JUL '23	2,483	1,283	285	13,006
JUL '22	2,320	1,405	292	14,111

\* Reflects open cases as of the first of the month.



# Department of Correction

## Monthly Totals

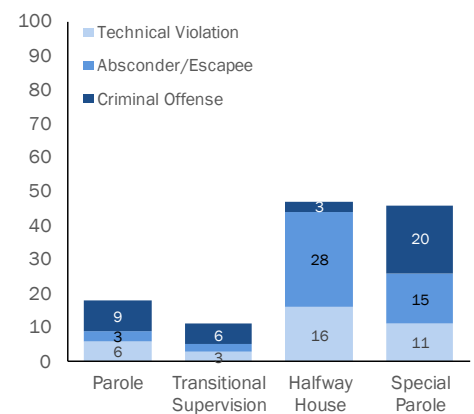
	2023	2023	2023	2022	% Change	
	MAY	JUN	JUL	JUL	Monthly	Annual
<b>Admissions</b>						
Federal/Other	49	24	33	28	37.5%	17.9%
Remands	134	111	122	130	9.9%	-6.2%
DUI	6	1	1	7	0.0%	-85.7%
Transfer Parole	0	0	0	5	-	-100.0%
Parole	17	16	18	17	12.5%	5.9%
Trans Plac/Furlough	0	2	0	2	-100.0%	-100.0%
Halfway House	28	30	47	28	56.7%	67.9%
Transitional Supervision	18	10	11	7	10.0%	57.1%
Special Parole	65	52	45	64	-13.5%	-29.7%
New Sentence	177	172	155	151	-9.9%	2.6%
Violation of Parole	48	36	45	23	25.0%	95.7%
Pretrial	1,093	1,112	1,110	967	-0.2%	14.8%
<b>Total</b>	<b>1,453</b>	<b>1,419</b>	<b>1,420</b>	<b>1,276</b>	<b>0.1%</b>	<b>11.3%</b>
<b>Releases and discharges</b>						
Transfer Parole	12	7	7	12	0.0%	-41.7%
Parole	48	35	36	35	2.9%	2.9%
Furlough	3	3	3	26	0.0%	-88.5%
Trans. Placement	21	11	8	12	-27.3%	-33.3%
Home Confinement DUI	37	27	27	19	0.0%	42.1%
Halfway House	121	109	109	94	0.0%	16.0%
Transitional Supervision	90	84	98	50	16.7%	96.0%
Special Parole	58	62	70	67	12.9%	4.5%
Nursing home	0	0	0	0	-	-
End of Sentence	441	395	451	416	14.2%	8.4%
<b>Total</b>	<b>831</b>	<b>733</b>	<b>809</b>	<b>731</b>	<b>10.4%</b>	<b>10.7%</b>
<b>Pretrial Releases*</b>						
From Court	405	357	371	324	3.9%	14.5%
Release to Bond	364	395	346	340	-12.4%	1.8%

\* Totals reflect events, not individual offenders

## Pretrial Admissions, New to DOC:

	MAY	JUN	JUL	JUL
	2023	2023	2023	2022
Arraignments	2,780	2,665	2,574	2,198
Pretrial Admits	1,093	1,112	1,110	967
New to DOC	264	287	300	231
<b>% New</b>	<b>24%</b>	<b>26%</b>	<b>27%</b>	<b>24%</b>

## Remands from Community Release



## Board of Pardons and Paroles

### Parole Hearings: New Cases

	Parole hearings	Paroles granted	Grant rate	Granted: prior year	Granted: two years prior
MAY	74	38	51%	33	57
JUN	96	51	53%	32	59
JUL	78	43	55%	33	64

### Other BOPP Actions

	Reparole from revocation	Early Termination		Special parole discharges	Transfer parole approvals
		Discretionary parole	Special parole		
MAY	27	3	11	23	8
JUN	33	2	7	16	8
JUL	50	9	9	17	3

## DOC: Community Release Unit

### Case Reviews and Release Metrics

	Cases reviewed	Approved	Denied	Continued	Approval rate
MAY	506	251	44	117	50%
JUN	500	242	47	130	48%
JUL '23	469	249	37	100	53%
JUL '22	410	205	51	96	50%

Monthly data sources: CRMVS via CJIS (arrests), JB CSSD (court and probation figures), BOPP and the DOC.

This report produced by the [Criminal Justice Policy & Planning Division Research Unit](#) at:

The Connecticut Office of Policy and Management  
450 Capitol Avenue, Hartford CT, 06106

