



# OPM - Criminal Justice Policy & Planning Division Monthly Indicators Report

## Highlights

- Connecticut’s correctional facility population totaled 9,921 individuals on June 1, 2022. The DOC facility count increased by only 18 as compared to May 1 (9,903), however, the correctional population has risen 10.7% since June 2021 (refer to Table 2).
- Releases and discharges from the DOC were up 16.8% in May compared to the prior month (from 638 to 745), and up 20.4% from one year ago. End of sentence discharges, in particular, increased 24.4% from May 2021 (see Table 2a).
- The number of individuals starting a term of probation increased from 1,692 in April to 1,777 in May, a 5.0% gain. Compared to 945 in May 2021, probation starts are up 88.0% from one year ago.
- Several metrics demonstrated consistency this May. Arrests, arraignments, and the total adult probation population varied by less than ±2% when juxtaposed against their April counts (see Chart 2).

## Correction Population Forecast

Over the first seven days of June, there was an average of 9,923 people in Connecticut’s jails and prisons. This exceeded OPM’s estimates by 215 individuals (see Table 1), and slightly raised the average daily count’s percent difference from OPM’s forecast to 2.2%. In May the percent difference stood at 2%.

Spring 2022’s correction population growth is atypical compared to historic seasonal patterns. Historically, the facility population peaks in February, then declines modestly until summer, when the population increases into late fall. This historic seasonality is reflected in the 2022-23 correction forecast (see Chart 1). This spring however, the correction population continued growing modestly into June. Instead of exhibiting a February peak followed by decline, as in past years, 2022 has yet to register a month-to-month decline.

TABLE 1 – Correction Population Forecast

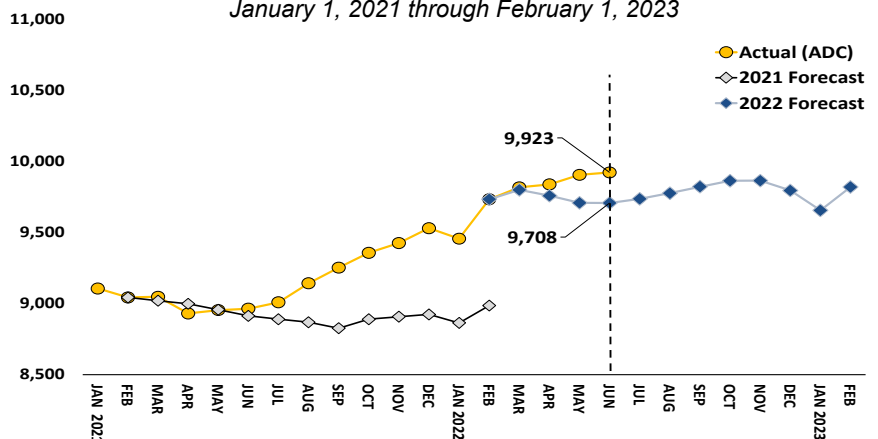
	Avg. Daily OPM 2022 Count	Forecast	Inmate difference
JAN '22	9,456	-	-
FEB	9,734	9,734	-
MAR	9,818	9,800	18
APR	9,838	9,759	79
MAY	9,905	9,709	196
JUN	9,923	9,708	215
JUL		9,737	
AUG		9,777	
SEP		9,822	
OCT		9,864	
NOV		9,865	
DEC		9,796	
JAN '23		9,656	
FEB		9,820	

*Avg. Daily Count (ADC) for 1st week of month*

Aside from a slight decrease in December 2021, the correction population has followed a near linear trend upward since summer 2021. Between the May 1, 2021 low and June 1, 2022, the DOC has added nearly 70 people on average per month. Should this trend hold, OPM estimates the DOC count could reach 10,500 in early 2023, an 8% growth over the year. While higher than OPM’s CJPPD projected estimates, that result still falls well within our forecast’s probable range but warrants continued monitoring.

Chart 1 – Actual Correction Population Against the OPM Forecasts

January 1, 2021 through February 1, 2023



## Chart 2 - Criminal Justice, Monthly Counts and Flows

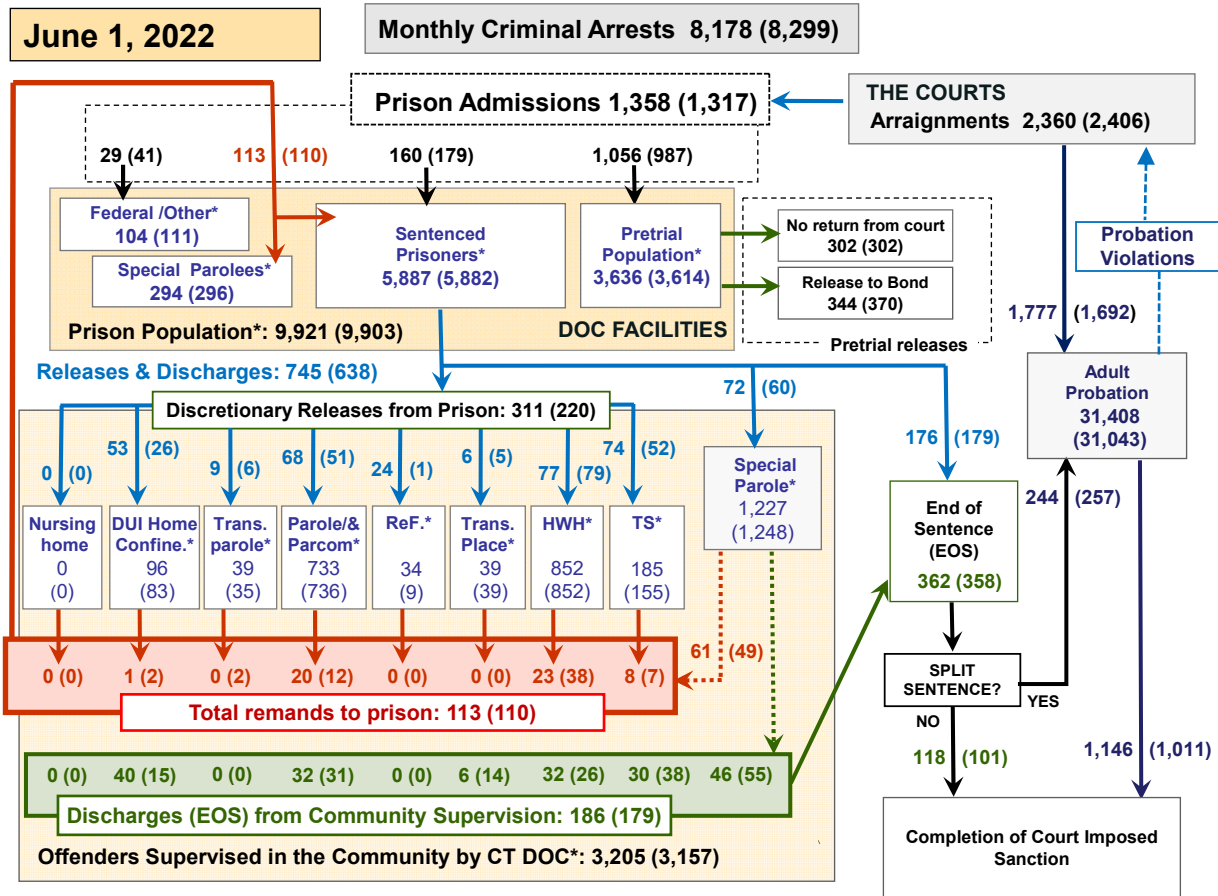
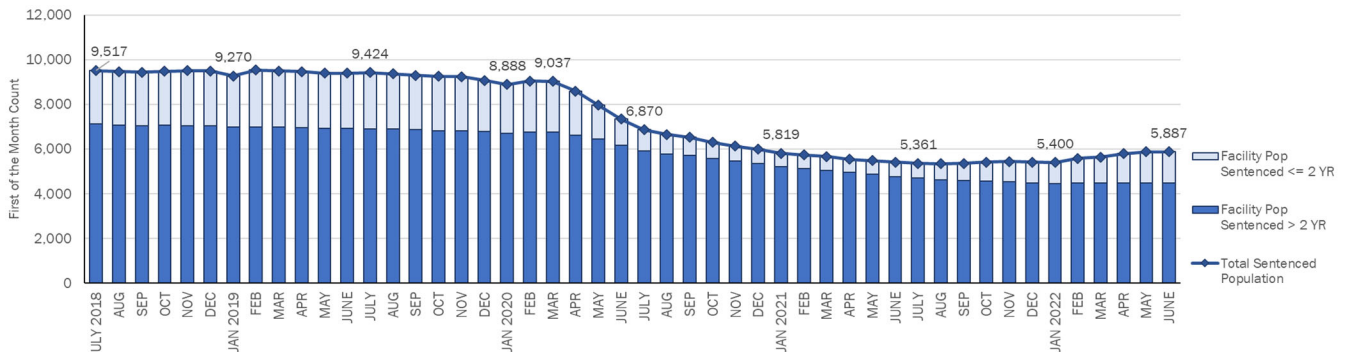


Chart 2 contains monthly operations data for May 2022 and daily counts reported on June 1, 2022. Asterisks (\*) indicate the daily count on June 1st. Figures for last month are enclosed by parentheses. Sources: Arrests – CRMVS, via CJIS, Court and probation data - CSSD, all other data - CT DOC.

## Spotlight: DOC Sentenced Population Changes Over Time



The chart above examines changes in the size of the sentenced population in DOC facilities, divided into two categories based on calculated sentence lengths: (1) people with sentences less than or equal to two years (light-blue columns) and (2) those sentenced longer than two years (dark-blue columns).

Due to criminal justice and greater societal factors, many pandemic-related, the DOC sentenced population has decreased, particularly following March 2020. People serving sentences longer than two years declined steadily between March 2020 and June 2021 before stabilizing and holding steady over the following year.

The number of people with sentences two years or less decreased more sharply after March 2020 before also stabilizing over approximately the same period. Since June 2021, this cohort has gradually increased.

The short-sentence population often fluctuates, as it is more directly impacted by near-term shifts in the justice system. Meanwhile, because of generally longer stays in correction facilities, significant changes in the number of people with longer sentences tend to predict enduring DOC population impacts. Monitoring this longer sentence group helps inform OPM CJPPD's correction population forecast and shape long-term expectations regarding impacts and growth.

**Table 2 - First-of-Month Totals**

	2022	2022	2022	2021	% Change	
	Apr. 1	May 1	Jun. 1	Jun. 1	Monthly	Annual
<b>DOC Facilities</b>						
Federal/Other	105	111	104	93	-6.3%	11.8%
Sentenced	5,798	5,882	5,887	5,424	0.1%	8.5%
Special Parole	295	296	294	356	-0.7%	-17.4%
Pretrial	3,629	3,614	3,636	3,087	0.6%	17.8%
<b>Total</b>	<b>9,827</b>	<b>9,903</b>	<b>9,921</b>	<b>8,960</b>	<b>0.2%</b>	<b>10.7%</b>
<b>DOC Community</b>						
Transfer Parole	43	35	39	75	11.4%	-48.0%
Parole/ Parcom Total	735	736	733	997	-0.4%	-26.5%
Parole	586	584	585	823	0.2%	-28.9%
Parcom @ CT	149	152	148	174	-2.6%	-14.9%
Furlough	11	9	34	22	277.8%	54.5%
Trans Placement	49	39	39	77	0.0%	-49.4%
DUI/Home confine.	74	83	96	29	15.7%	231.0%
Halfway House Total	847	852	852	773	0.0%	10.2%
Comm Release	361	365	360	377	-1.4%	-4.5%
TS	16	12	11	3	-8.3%	266.7%
Parole	159	155	149	131	-3.9%	13.7%
Transfer Parole	19	20	22	18	10.0%	22.2%
Special Parole	292	300	310	244	3.3%	27.0%
TS	149	155	185	188	19.4%	-1.6%
Nursing home	0	0	0	0	-	-
Special Parole	1,301	1,248	1,227	1,736	-1.7%	-29.3%
<b>Total</b>	<b>3,209</b>	<b>3,157</b>	<b>3,205</b>	<b>3,897</b>	<b>1.5%</b>	<b>-17.8%</b>

**Table 2a - Monthly Admissions, Releases, & Discharges**

	2022	2022	2022	2021	% Change	
	MAR	APR	MAY	MAY	Monthly	Annual
<b>Admissions</b>						
Federal/Other	39	41	29	22	-29.3%	31.8%
Remands	114	110	113	95	2.7%	18.9%
DUI	5	2	1	2	-50.0%	-50.0%
Transfer Parole	1	2	0	0	-100.0%	-
Parole	19	12	20	15	66.7%	33.3%
Trans Plac/Furlough	1	0	0	1	-	-100.0%
HWH	33	38	23	16	-39.5%	43.8%
TS	7	7	8	5	14.3%	60.0%
Special Parole	48	49	61	56	24.5%	8.9%
New Sentence	226	179	160	84	-10.6%	90.5%
VOP	39	34	41	17	20.6%	141.2%
Pretrial	1,035	987	1,056	754	7.0%	40.1%
<b>Total</b>	<b>1,414</b>	<b>1,317</b>	<b>1,358</b>	<b>955</b>	<b>3.1%</b>	<b>42.2%</b>
<b>Releases and discharges</b>						
Transfer Parole	19	6	9	24	50.0%	-62.5%
Parole	67	51	68	79	33.3%	-13.9%
Furlough	2	1	24	14	2300.0%	71.4%
Trans. Placement	9	5	6	20	20.0%	-70.0%
Home Confinement DUI	37	26	53	6	103.8%	783.3%
HWH	103	79	77	77	-2.5%	0.0%
TS	69	52	74	29	42.3%	155.2%
Special Parole	77	60	72	79	20.0%	-8.9%
Nursing home	0	0	0	0	-	-
End of Sentence	358	358	362	291	1.1%	24.4%
<b>Total</b>	<b>741</b>	<b>638</b>	<b>745</b>	<b>619</b>	<b>16.8%</b>	<b>20.4%</b>
<b>Pretrial Releases*</b>						
From Court	356	302	302	134	0.0%	125.4%
Release to Bond	386	370	344	314	-7.0%	9.6%

\* Totals reflect events, not individual offenders

**DOC - Community Release Unit (CRU)**

**Table 3 - Case reviews and release metrics**

	Cases				Approval Rate
	Reviewed	Approved	Denied	Continued	
MAR	492	222	69	105	45%
APR	415	189	32	102	46%
MAY 22	414	205	40	89	50%
MAY 21	232	104	39	25	45%

Note: Figures published here are based on the operational data available at the time of publication. Data in subsequent issues may not agree.

**Board of Pardons and Paroles**

**Table 4 - Parole hearings, new cases**

	Parole Hearings	Paroles granted	Grant rate	Granted: Prior Year	Granted: Two Years Prior
MAR	68	49	72%	58	70
APR	82	59	72%	74	77
MAY	52	33	63%	57	86

**Table 4a - Other BOPP actions**

	Reparole from revocation	Reparole from rescission	Closed interest cases	Special parole cases	Transfer parole cases
MAR	45	0	16	3	14
APR	42	0	13	12	13
MAY 2022	38	0	13	7	13
MAY 2021	11	0	9	23	13

**The Pretrial Population**

**Table 5 - Bond ranges for pretrial detainees**

	Apr. 1, 2022	May 1, 2022	Jun. 1, 2022	Jun. 1, 2021
Bond amount				
Less than \$20K	423	400	424	366
\$20K to <\$50K	423	444	440	370
\$50K to <\$100K	561	557	544	498
\$100K or higher	2,373	2,355	2,374	2,076
Persons w/bonds	3,780	3,756	3,782	3,310
Over \$1M	434	439	439	348

**Table 5a - Pretrial, weeks since admission**

Weeks since last DOC admit	Apr. 1, 2022	May 1, 2022	Jun. 1, 2022	Jun. 1, 2021
< 1 week	285	350	344	226
1 to < 3 weeks	270	214	266	200
3 to < 10 weeks	679	706	708	584
10 to < 30 weeks	1,023	994	975	849
30 wks or more	1,534	1,493	1,509	1,454
Pretrial prisoners	3,791	3,757	3,802	3,313

**Table 5b - Pretrial admits, new offenders**

	MAR 2022	APR 2022	MAY 2022	MAY 2021
Arraignments	2,547	2,406	2,360	1,633
Pretrial Admits	1,035	987	1,056	754
New to DOC	250	244	272	194
% New	24%	25%	26%	26%

**Court Support Services Division**

**Table 6 - The jail reinterview program**

	Pretrial admissions	Offender interviews	Offenders released	Released last year
MAR	1,035	1,013	255	225
APR	987	941	217	166
MAY	1,056	870	259	174

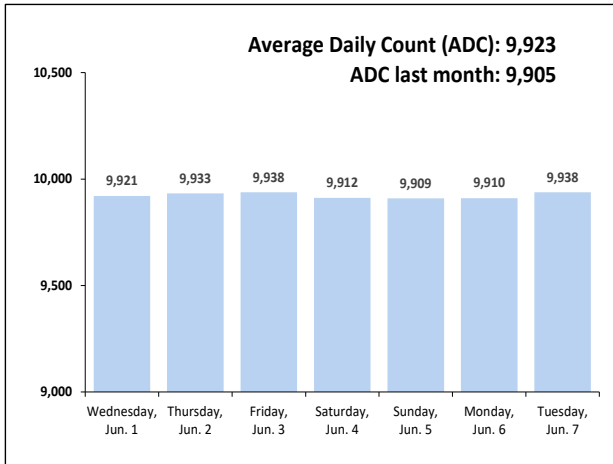
**Table 6a - Pretrial bail and probation caseloads**

	Pretrial Bail Case Starts	Client Supv. Starts	Split Sentence Starts	Pretrial bail cases
MAR	2,050*	1,963	235	12,665*
APR	2,050*	1,692	257	12,665*
MAY	2,050*	1,777	244	12,665*
MAY '21	2,050*	945	171	12,665*

\* CSSD estimates

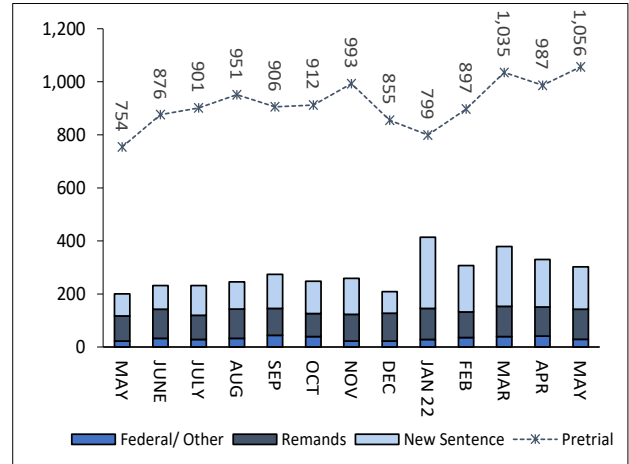
### Chart 3 – Prison Population

First week of the month, avg. daily count (ADC)



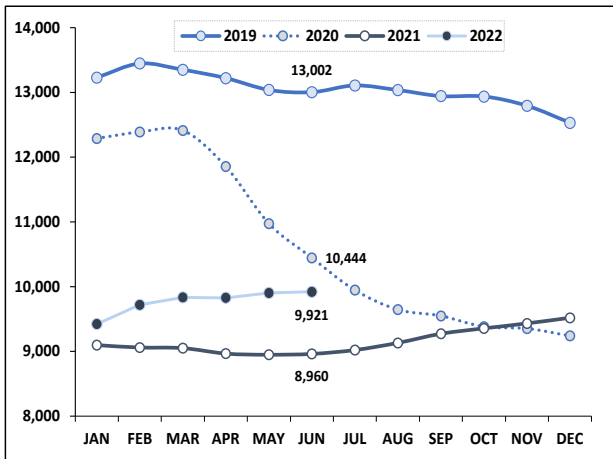
### Chart 6 – Monthly DOC Admissions

May 2021 through May 2022



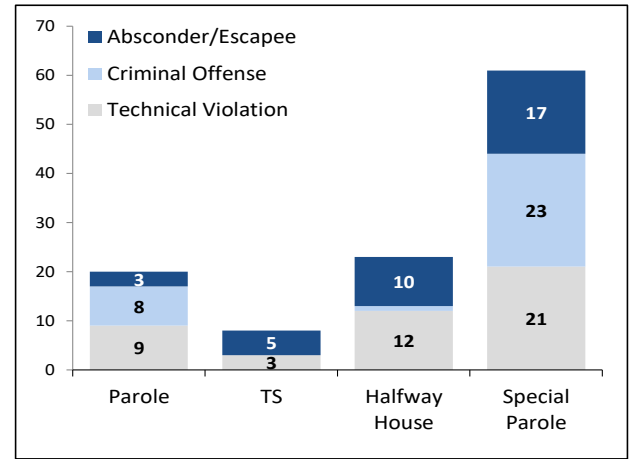
### Chart 4 – Prison Population, First-of-Month

2019, 2020, 2021, and 2022



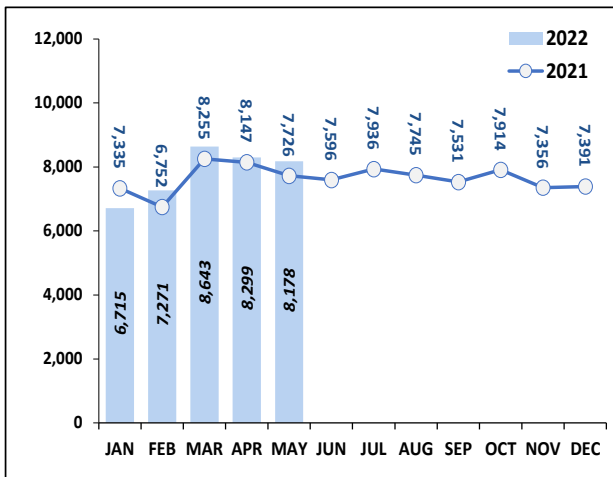
### Chart 7– Remands From Community Release

May 2022



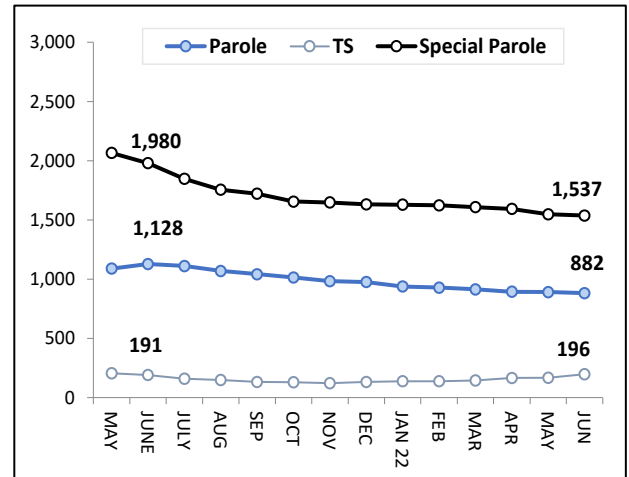
### Chart 5 – Statewide Arrests

2021 and 2022



### Chart 8 – DOC Community Supervision

May 1, 2021 through Jun. 1, 2022



Note: Data for all charts, except for Chart 5, was supplied by CT DOC. Data for Chart 5 are for new case starts in the state Criminal Motor Vehicle System (CRMVS). Chart 8 includes offenders in halfway houses.