



OPM - Criminal Justice Policy & Planning Division Monthly Indicators Report

Highlights

- On November 1, 2022 Connecticut jails and prisons held 10,068 people, a decrease of just 26 (0.3%) since October 1.
- Front-end activity also continued to slow in the past month.
 - Cumulative arrests fell 5.7% in October compared to the month prior and by 13.2% from August, the 2022 peak (Chart 5).
 - Arraignments in October declined by 4.2% (-99) to 2,282.
 - Pretrial admissions fell by 68 (-6.8%) to 932.
- End of sentence discharges rose 6.4% (+23) in October to 381, while discretionary releases to community supervision increased by a slightly larger percentage (8.5%), to 305.
- On November 1, the number of individuals on Transitional Supervision stood at 230, up 8.0% from the month prior and a 109.1% increase over November 2021's count, the lowest observed over ten years. For more, see this month's *Spotlight*, which takes a historical look at monthly releases to Transitional Supervision.

Correction Population Forecast

Over the first seven days of November, the number of people held in Connecticut's DOC facilities averaged 10,061 daily (see Table 1). Compared to the first week of October, the correctional population declined negligibly (<1.0%), though the facility population continues to ebb lower from its September 2022 peak. The November population varies by 2.0% from OPM CJPPD's forecast, which estimated 9,865 people held in DOC facilities to start the month.

OPM CJPPD forecast the facility population to peak in November for 2022, before shrinking 2.1% by the beginning of 2023. While the actual correction population appears to have peaked in September, subsequent declines have been modest. November's count is only -0.01% below September's. However, the highlighted October slowdown of front-end metrics, including arrests, arraignments and pretrial admissions, suggests that we should anticipate further decreases in the DOC facility population next month.

TABLE 1 – Correction Population Forecast

	Avg. Daily Count	OPM 2022 Forecast	Inmate difference
JAN '22	9,456	-	-
FEB	9,734	9,734	-
MAR	9,818	9,800	18
APR	9,838	9,759	79
MAY	9,905	9,709	196
JUN	9,923	9,708	215
JUL	9,981	9,737	244
AUG	10,048	9,777	271
SEP	10,122	9,822	300
OCT	10,093	9,864	229
NOV	10,061	9,865	196
DEC		9,796	
JAN '23		9,656	
FEB		9,820	

Avg. Daily Count (ADC) for 1st week of month

Again, the extent to which seasonal decreases manifest merits close watching. If the correctional population contracts proportionally to OPM's forecast, we might see approximately 9,900 people held in DOC facilities to begin 2023. Should population counts remain relatively steady, however, DOC facility counts may consistently hover above 10,000 to start the year.

Chart 1 – Actual Correction Population Against the OPM Forecasts

January 1, 2021 through February 1, 2023

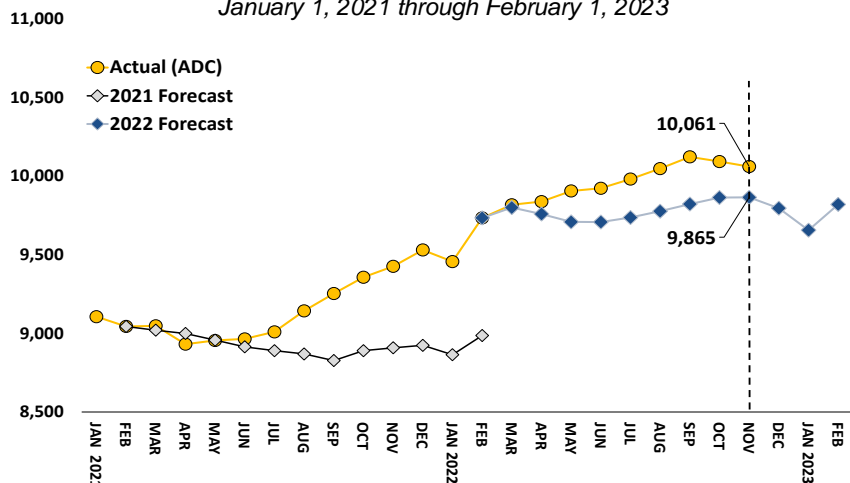


Chart 2 - Criminal Justice, Monthly Counts and Flows

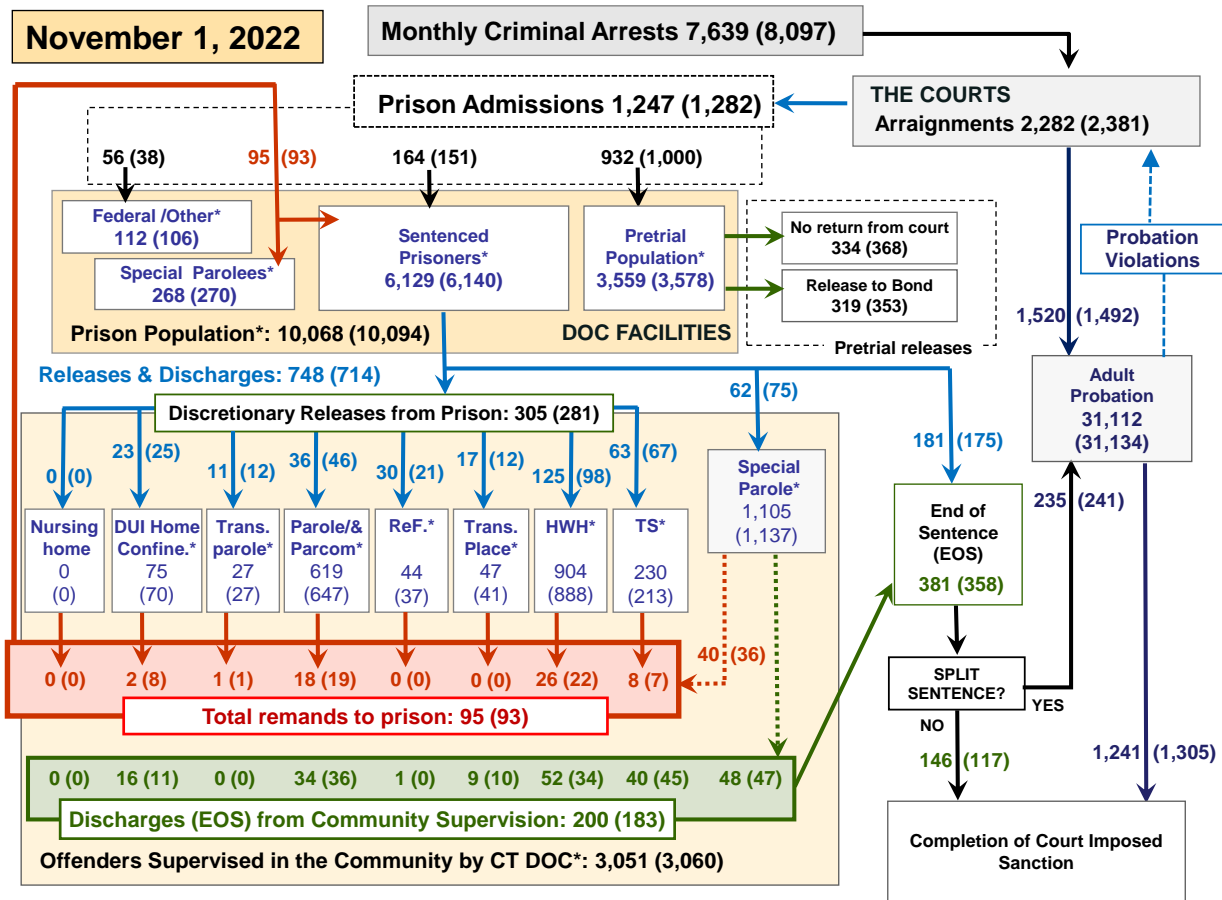
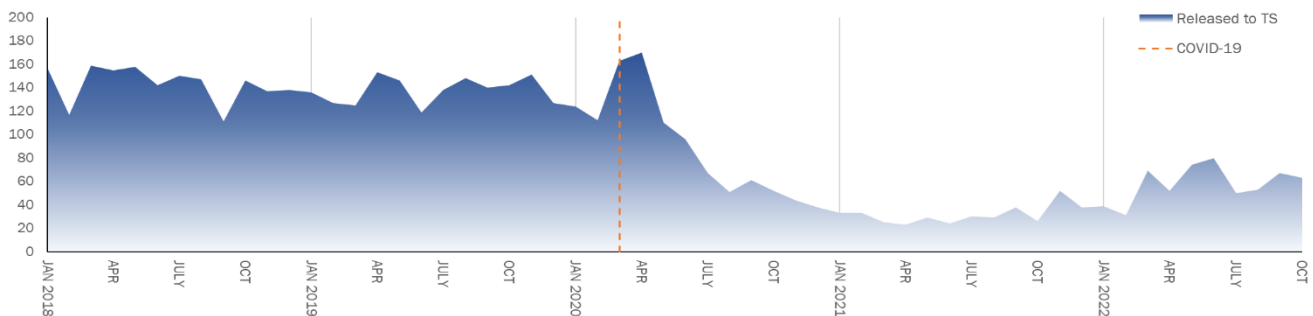


Chart 2 contains monthly operations data for October 2022 and daily counts reported on November 1, 2022. Asterisks (*) indicate the daily count on November 1st. Figures for last month are enclosed by parentheses. Sources: Arrests - CRMVS, via CJIS, Court and probation data - CSSD, all other data - CT DOC.

Spotlight: Releases to Transitional Supervision, 2018–2022



The COVID-19 pandemic has had considerable impacts across many of the metrics tracked in our *Monthly*. Discretionary releases to Transitional Supervision (TS), the subject of this month's *Spotlight*, is one measure where trends following the pandemic's onset have yet to return to pre-pandemic ranges. The chart above presents these monthly releases from DOC facilities (shaded blue area) between January 2018 and October 2022. The pandemic's onset is noted by a dashed orange line in March 2020.

Individuals who have served more than 50% of a two-year or less incarceration sentence become eligible for TS release into DOC community programming. Prior to COVID, TS releases consistently ranged from 110 to 160 each

month, averaging 139 between January 2018 and March 2020. After a brief rise immediately following the pandemic's onset, TS releases fell significantly into the spring of 2021. While TS releases increased notably in the past year, October 2022's volume remains roughly half of the pre-pandemic average.

The reduction in TS releases in the pandemic's wake stems from a decline in the TS-eligible population. With the pandemic's impact on disposing cases, the number of individuals in the DOC serving sentences two years or less dwindled. OPM CJPPD anticipates TS releases will continue to rise in 2023 but will be tracking whether they rebound to pre-pandemic levels.

Table 2 - First-of-Month Totals

	2022			2021	% Change	
	Sep. 1	Oct. 1	Nov. 1	Nov. 1	Monthly	Annual
DOC Facilities						
Federal/Other	108	106	112	95	5.7%	17.9%
Sentenced	6,071	6,140	6,129	5,452	-0.2%	12.4%
Special Parole	285	270	268	355	-0.7%	-24.5%
Pretrial	3,661	3,578	3,559	3,529	-0.5%	0.9%
Total	10,125	10,094	10,068	9,431	-0.3%	6.8%
DOC Community						
Transfer Parole	32	27	27	55	0.0%	-50.9%
Parole/ Parcom Total	669	647	619	851	-4.3%	-27.3%
Parole	521	498	472	686	-5.2%	-31.2%
Parcom @ CT	148	149	147	165	-1.3%	-10.9%
Furlough	47	37	44	22	18.9%	100.0%
Trans. Placement	39	41	47	57	14.6%	-17.5%
DUI/Home confine.	68	70	75	54	7.1%	38.9%
Halfway House Total	847	888	904	746	1.8%	21.2%
Comm Release	382	402	416	342	3.5%	21.6%
TS	10	11	8	11	-27.3%	-27.3%
Parole	164	161	154	132	-4.3%	16.7%
Transfer Parole	16	13	17	14	30.8%	21.4%
Special Parole	275	301	309	247	2.7%	25.1%
TS	180	213	230	110	8.0%	109.1%
Nursing home	0	0	0	0	-	-
Special Parole	1,177	1,137	1,105	1,401	-2.8%	-21.1%
Total	3,059	3,060	3,051	3,296	-0.3%	-7.4%

Table 2a - Monthly Admissions, Releases, & Discharges

	2022			2021	% Change	
	AUG	SEP	OCT	OCT	Monthly	Annual
Admissions						
Federal/Other	39	38	56	39	47.4%	43.6%
Remands	106	93	95	87	2.2%	9.2%
DUI	1	8	2	0	-75.0%	-
Transfer Parole	0	1	1	1	0.0%	0.0%
Parole	12	19	18	16	-5.3%	12.5%
Trans Plac/Furlough	1	0	0	0	-	-
HWH	32	22	26	27	18.2%	-3.7%
TS	10	7	8	1	14.3%	700.0%
Special Parole	50	36	40	42	11.1%	-4.8%
New Sentence	169	151	164	122	8.6%	34.4%
VOP	29	30	30	25	0.0%	20.0%
Pretrial	1,220	1,000	932	912	-6.8%	2.2%
Total	1,534	1,282	1,247	1,160	-2.7%	7.5%
Releases and discharges						
Transfer Parole	6	12	11	16	-8.3%	-31.3%
Parole	55	46	36	61	-21.7%	-41.0%
Furlough	18	21	30	15	42.9%	100.0%
Trans. Placement	12	12	17	10	41.7%	70.0%
Home Confinement DUI	21	25	23	16	-8.0%	43.8%
HWH	112	98	125	53	27.6%	135.8%
TS	53	67	63	26	-6.0%	142.3%
Special Parole	65	75	62	90	-17.3%	-31.1%
Nursing home	0	0	0	0	-	-
End of Sentence	379	358	381	305	6.4%	24.9%
Total	721	714	748	592	4.8%	26.4%
Pretrial Releases*						
From Court	409	368	334	252	-9.2%	32.5%
Release to Bond	394	353	319	320	-9.6%	-0.3%

* Totals reflect events, not individual offenders

DOC - Community Release Unit (CRU)

Table 3 - Case reviews and release metrics

	Cases reviewed	Approved	Denied	Continued	Approval rate
AUG	418	201	39	109	48%
SEP	429	209	43	99	49%
OCT '22	502	236	36	137	47%
OCT '21	301	137	38	54	46%

Note: Figures published here are based on the operational data available at the time of publication. Data in subsequent issues may not agree.

Board of Pardons and Paroles

Table 4 - Parole hearings, new cases

	Parole hearings	Paroles granted	Grant rate	Granted: prior year	Granted: two years prior
AUG	73	50	68%	57	68
SEP	42	27	64%	52	102
OCT	96	67	70%	49	78

Table 4a - Other BOPP actions

	Reparole from revocation	Early Termination		Special parole discharges	Transfer parole approvals
		Discretionary parole	Special parole		
AUG	37	6	24	10	15
SEP	33	15	17	11	8
OCT	50	13	24	14	25

The Pretrial Population

Table 5 - Bond ranges for pretrial detainees

Bond amount	Sep. 1, 2022	Oct. 1, 2022	Nov. 1, 2022	Nov. 1, 2021
Less than \$20K	418	390	395	374
\$20K to < \$50K	459	455	438	432
\$50K to <\$100K	536	502	483	584
\$100K or higher	2,414	2,341	2,387	2,331
Persons w/bonds	3,827	3,688	3,703	3,721
Over \$1M	480	471	486	398

Table 5a - Pretrial, weeks since admission

Weeks since last DOC admit	Sep. 1, 2022	Oct. 1, 2022	Nov. 1, 2022	Nov. 1, 2021
< 1 week	333	293	314	317
1 to < 3 weeks	271	271	256	258
3 to < 10 weeks	757	723	688	658
10 to < 30 weeks	1,039	1,010	1,035	1,020
30 wks or more	1,440	1,400	1,413	1,471
Pretrial prisoners	3,840	3,697	3,706	3,724

Table 5b - Pretrial admits, new offenders

	AUG 2022	SEP 2022	OCT 2022	OCT 2021
Arraignments	2,817	2,381	2,282	2,029
Pretrial Admits	1,220	1,000	932	912
New to DOC	305	206	236	239
% New	25%	21%	25%	26%

Court Support Services Division

Table 6 - The jail reinterview program

	Pretrial admissions	Offender interviews	Offenders released	Released last year
AUG	1,220	987	290	180
SEP	1,000	980	269	245
OCT	932	991	240	238

Table 6a - Pretrial bail and probation caseloads

	Pretrial bail case starts	Client supv. starts	Split sentence starts	Pretrial bail cases*
AUG	2,620	1,530	242	14,165
SEP	2,361	1,492	241	14,042
OCT '22	2,305	1,520	235	13,881
OCT '21	2,397	1,646	197	13,096

* reflects open cases as of the first of the month

Chart 3 – Prison Population

First week of the month, avg. daily count (ADC)

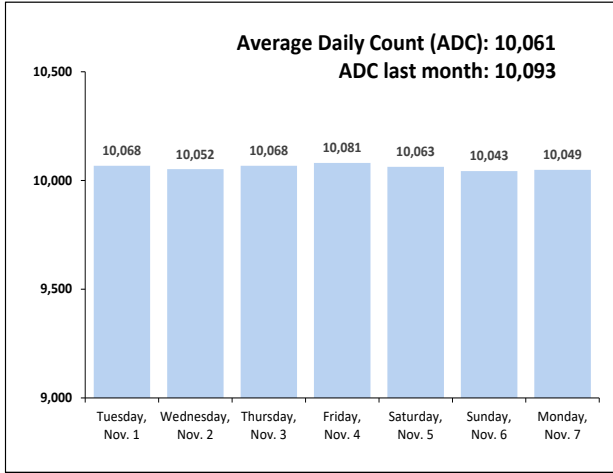


Chart 6 – Monthly DOC Admissions

October 2021 through October 2022

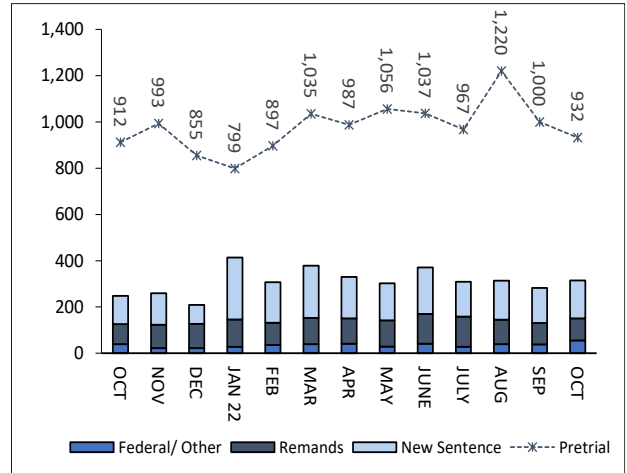


Chart 4 – Prison Population, First-of-Month

2019, 2020, 2021, and 2022

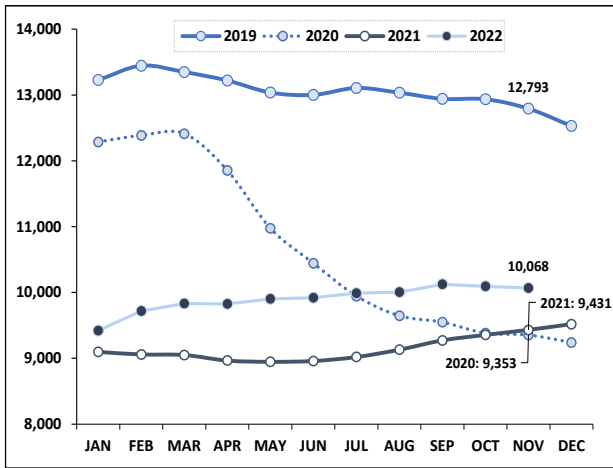


Chart 7– Remands from Community Release

October 2022

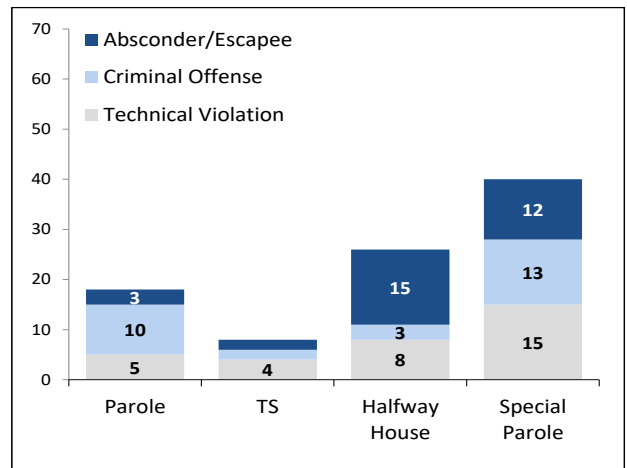


Chart 5 – Statewide Arrests

2021 and 2022

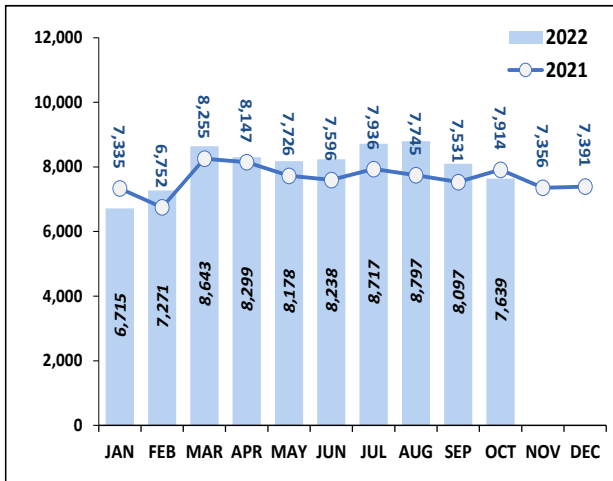
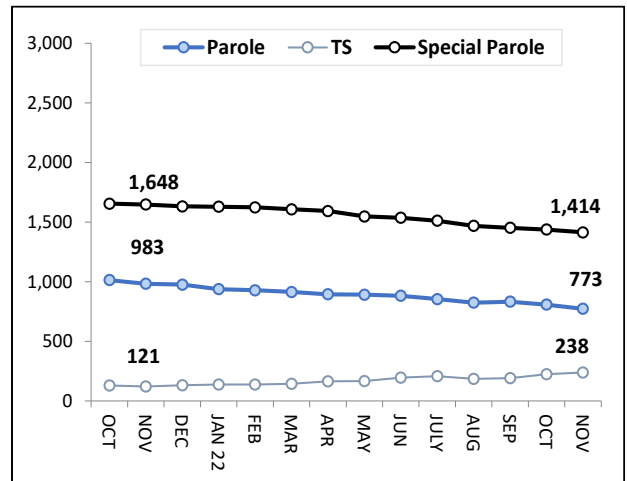


Chart 8 – DOC Community Supervision

October 1, 2021 through November 1, 2022



Note: Data for all charts, except for Chart 5, was supplied by CT DOC. Data for Chart 5 are for new case starts in the state Criminal Motor Vehicle System (CRMVS). Chart 8 includes offenders in halfway houses.