

OPM - Criminal Justice Policy & Planning Division

Monthly Indicators Report

Highlights

- The state’s prisons and jails held 9,097 inmates on January 1, 2021 - down 143 prisoners since December 1st and 3,188 from January 1, 2020.
- Both lock-up arraignments and pretrial admits increased modestly over the last month, with 1,526 arraignments and 670 pretrial admits in December. These amounts surpassed November’s 1,490 arraignments and 637 pretrial admits, but remained significantly below the amounts observed in 2019, shown in Table 5b.
- The annual total of admissions to the DOC fell by approximately 46% in 2020 compared to 2019. On a monthly basis, December 2020’s 815 admissions were 41% lower than December 2019, however only down slightly from November’s 821 admissions.
- The sentenced population ebbed lower by 3%, with 5,819 sentenced offenders in DOC facilities as of January 1st. The 674 releases in December, a difference of +22 from November, remained far below 1,044 releases in December 2019. Taken together, these trends suggest that the reduction in admissions in 2020, highlighted above, continues to drive the decline observed in the DOC sentenced population.
- Reflecting the prison population, the number of adults on probation in CT has fallen to a historical low. On January 1st adult probationers numbered less than 32,000. Putting that figure into perspective, in 2008 there were more than 55,000 probationers

Prison Population Forecast

The yawning gap between OPM’s forecast and the DOC population in Chart 1 highlights the disruption caused to the criminal justice system in 2020. From April to August 2020, responses to a global pandemic accelerated anticipated declines in the prison population. Since August, the decreases have attenuated, suggesting a return to typical patterns. OPM remains eager to see whether this January, as has been the case most years, the population ticks up with a boost of newly sentenced offenders, a phenomenon we call the “January bump.”

Table 1 shows the prison count hit its annual low point the first week of January 2021. With comprehensive disruptions to justice operations during the pandemic, and COVID’s persistence into 2021, a January bump is not certain. Still, as previous months suggest a return to “normal” operations, OPM’s 2020 forecast expects a 2021 bump.

At the time of publication, the daily DOC population has risen from Jan 1st as expected. However, in first two weeks, the DOC has ticked up by only 15 offenders. Five years ago we noted that 221 offenders, two-thirds newly sentenced, were added over January’s first two-weeks. 2021 stands in marked contrast, where the sentenced total has dropped since the 1st. Early notice perhaps that 2021 may not exhibit the anticipated patterns.

TABLE 1 – Prison Population Forecast

	Avg. Daily Count	OPM 2020 Forecast	Inmate difference
JAN '20	12,315	-	-
FEB	12,413	12,413	-
MAR	12,382	12,293	-89
APR	11,751	12,234	483
MAY	10,903	12,163	1,260
JUN	10,375	12,120	1,745
JUL	9,907	12,072	2,165
AUG	9,644	12,074	2,430
SEP	9,521	12,044	2,523
OCT	9,357	12,046	2,689
NOV	9,342	12,015	2,674
DEC	9,246	11,922	2,676
JAN '21	9,106	11,722	2,616
FEB		11,867	-

Avg. Daily Count (ADC) for 1st week of month

Chart 1 – Actual prison population against the OPM forecasts

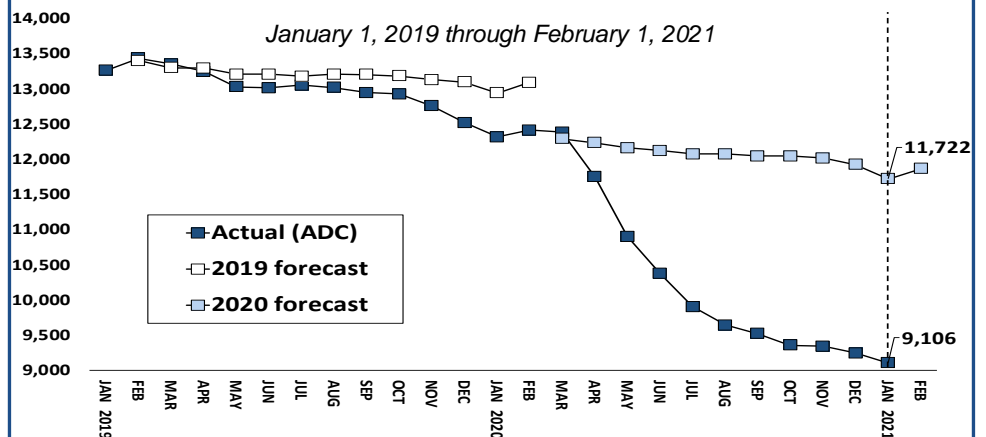


Chart 2 - Criminal justice, monthly counts and flows

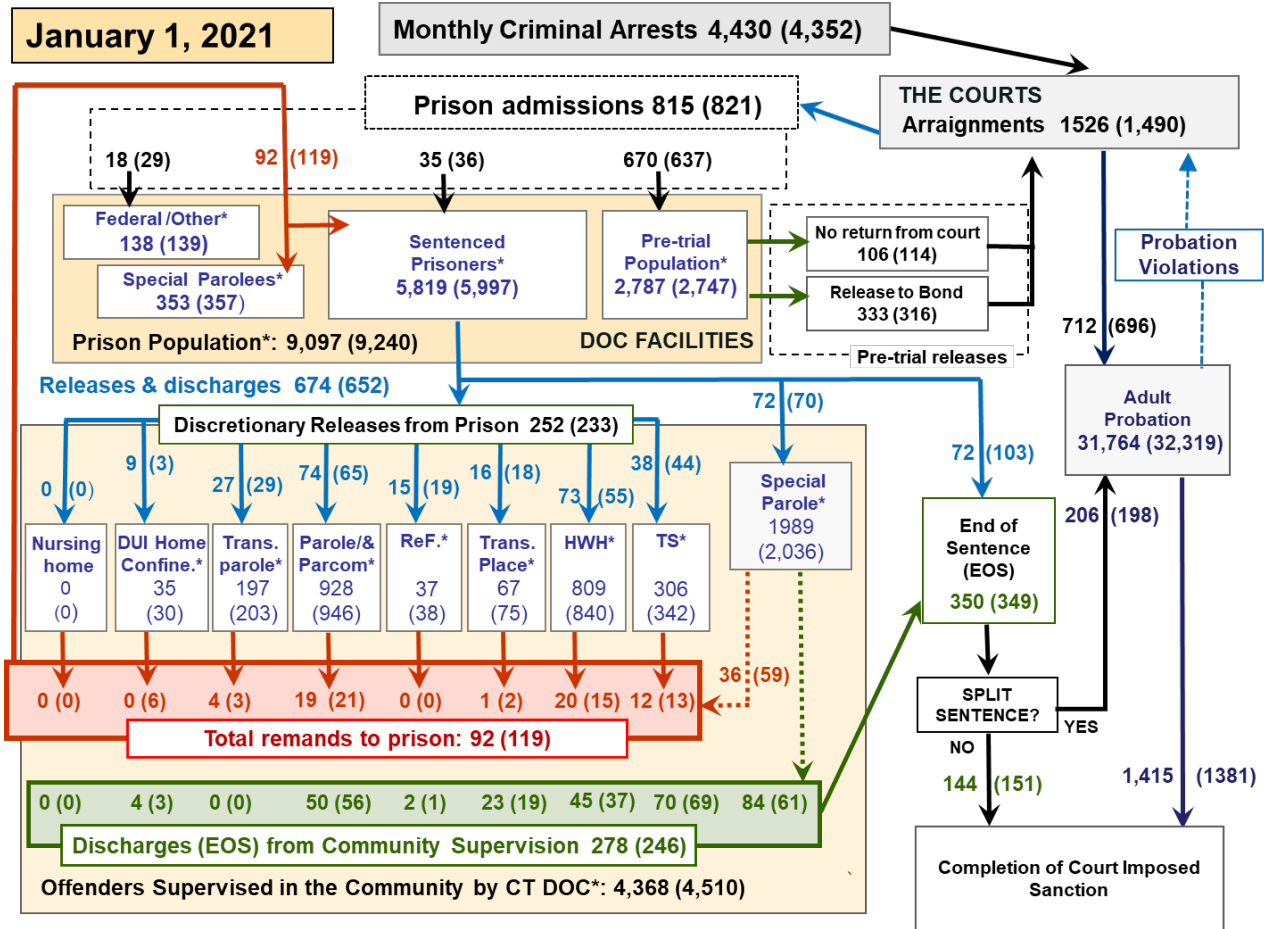
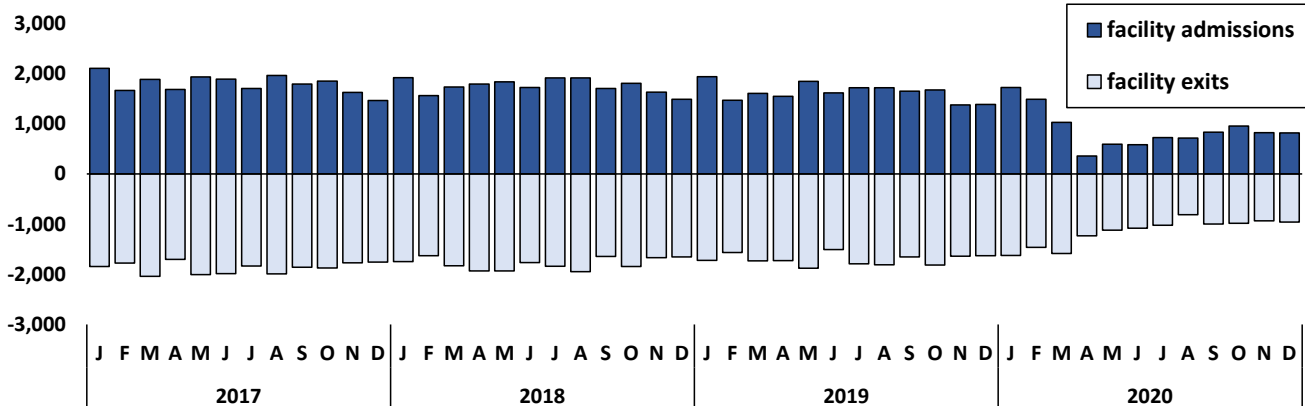


Chart 2 contains monthly operations data for December 2020 and daily counts reported on January 1, 2021. Asterisks (*) indicate the daily count on January 1st. Figures for last month are enclosed by parentheses. Sources: Arrests – CRMVS, via CJIS, Court and probation data - CSSD, all other data - CT DOC.

Chart 2a – COVID-19’s disruption of prisoner flows



In the chart above, the bars above the horizontal line represent all DOC admission events. Below the baseline, the bars depict all facility release events. The timeline begins with January 2017 and continues through December 2020. Month-over-month, release events mirror admissions resulting in modest change to the count of incarcerated individuals at any one time. The disruptive force of COVID-19 is evident in March and April 2020 when the careful balance was interrupted. Through July 2020, release events outpaced admissions resulting in substantial decreases to the CT DOC inmate population.

Beginning in August, the system, as has been the case in the past, found stability. Once again admissions and release events began to mirror one another. As a consequence, counts of incarcerated inmates fell by much smaller margins.

Effectively, the “churn” of people entering and exiting CT’s prisons and jails slowed. Between 2017 and 2019, on average, about 13% of the prison system turned over each month. By the end of 2020 that metric dipped to about 8%.

Table 2 - First-of-month totals

	2020	2020	2021	2020	% Change	
	Nov. 1	Dec. 1	Jan. 1	Jan. 1	Monthly	Annual
DOC Facilities						
Federal/Other	132	139	138	130	-0.7%	6.2%
Sentenced	6,143	5,997	5,819	8,888	-3.0%	-34.5%
Special Parole	328	357	353	345	-1.1%	2.3%
Pre-trial	2,750	2,747	2,787	2,922	1.5%	-4.6%
Total	9,353	9,240	9,097	12,285	-1.5%	-26.0%
DOC Community						
Transfer Parole	203	203	197	66	-3.0%	198.5%
Parole/ Parcom Total	954	946	928	927	-1.9%	0.1%
Parole	774	763	750	772	-1.7%	-2.8%
Parcom @ CT	180	183	178	155	-2.7%	14.8%
Furlough	43	38	37	19	-2.6%	94.7%
Trans Placement	77	75	67	42	-10.7%	59.5%
DUI/Home confine.	36	30	35	90	16.7%	-61.1%
Halfway House Total	867	840	809	1,017	-3.7%	-20.5%
Comm Release	452	417	391	528	-6.2%	-25.9%
TS	25	20	12	23	-40.0%	-47.8%
Parole	111	105	119	134	13.3%	-11.2%
Transfer Parole	29	32	36	9	12.5%	300.0%
Special Parole	250	266	251	323	-5.6%	-22.3%
TS	357	342	306	433	-10.5%	-29.3%
Nursing home	0	0	0	4	-	-100.0%
Special Parole	2,092	2,036	1,989	2,143	-2.3%	-7.2%
Total	4,629	4,510	4,368	4,741	-3.1%	-7.9%

Table 2a - Monthly admissions, releases & discharges

	2020	2020	2020	2019	% Change	
	OCT	NOV	DEC	DEC	Monthly	Annual
Admissions						
Federal/Other	22	29	18	69	-37.9%	-73.9%
Remands	115	119	92	129	-22.7%	-28.7%
DUI	6	9	4	3	-	-
Parole	14	21	19	18	-9.5%	5.6%
Trans Plac/Furlough	3	2	1	0	-	-
HWH	19	15	20	36	33.3%	-44.4%
TS	11	13	12	16	-7.7%	-25.0%
Special Parole	62	59	36	56	-39.0%	-35.7%
New Sentence	59	36	35	132	-2.8%	-73.5%
VOP	17	7	5	45	-	-
Pre-trial	757	637	670	1,054	5.2%	-36.4%
Total	953	821	815	1,384	-0.7%	-41.1%
Releases and discharges						
Transfer Parole	39	29	27	15	-6.9%	80.0%
Parole	63	65	74	54	13.8%	37.0%
Furlough	21	19	15	10	-21.1%	50.0%
Trans. Placement	18	18	16	13	-11.1%	23.1%
Home Confinement DUI	2	3	9	40	200.0%	-77.5%
HWH	91	55	73	144	32.7%	-49.3%
TS	52	44	38	127	-13.6%	-70.1%
Special Parole	60	70	72	85	2.9%	-15.3%
Nursing home	0	0	0	0	-	-
End of Sentence	357	349	350	556	0.3%	-37.1%
Total	703	652	674	1,044	3.4%	-35.4%
Pre-trial Releases*						
From Court	116	114	106	420	-7.0%	-74.8%
Release to Bond	333	316	333	350	5.4%	-4.9%

* Totals reflect events, not individual offenders

DOC - Community Release Unit (CRU)

Table 3 - Case reviews and release metrics

	Cases				Approval Rate
	Reviewed	Approved	Denied	Continued	
OCT	302	119	47	38	39%
NOV	223	110	43	25	49%
DEC 20	245	109	40	27	44%
DEC 19	602	269	78	96	45%

Note: Figures published here are based on the operational data available at the time of publication. Data in subsequent issues may not agree.

Board of Pardons and Paroles

Table 4 - Parole hearings, new cases

	Parole Hearings	Paroles granted	Grant rate	Paroles granted, 2019	Paroles granted, 2018
OCT	133	78	59%	72	52
NOV	71	36	51%	67	74
DEC	106	65	61%	68	74

Table 4a - Other BOPP actions

	Reparole from revocation	Reparole from rescission	Closed interest cases	Special parole cases	Transfer parole cases
OCT	19	0	19	15	36
NOV	15	1	8	11	14
DEC 2020	22	1	17	15	28
DEC 2019	44	1	29	26	11

The pre-trial population

Table 5 - Bond ranges for pre-trial detainees

Bond amount	Nov. 1, 2020	Dec. 1, 2020	Jan. 1, 2021	Jan. 1, 2020
Less than \$20K	359	354	347	421
\$20K to < \$50K	386	368	369	437
\$50K to < \$100K	454	451	455	534
\$100K or higher	1,734	1,772	1,830	1,678
Persons w/bonds	2,933	2,945	3,001	3,070
Over \$1M	273	279	291	208

Table 5a - Pre-trial, weeks since admission

Weeks since last DOC admit	Nov. 1, 2020	Dec. 1, 2020	Jan. 1, 2021	Jan. 1, 2020
< 1 week	220	181	189	277
1 to < 3 weeks	202	157	173	287
3 to < 10 weeks	480	535	502	688
10 to < 30 weeks	647	720	793	888
30 wks or more	1,387	1,353	1,346	945
Pre-trial prisoners	2,936	2,946	3,003	3,085

Table 5b - Pre-trial admits, new offenders

	OCT 2020	NOV 2020	DEC 2020	DEC 2019
Arraignments	1,696	1,490	1,526	2,521
Pre-trial Admits	757	637	670	1,054
New to DOC	188	149	160	277
% New	25%	23%	24%	26%

Court Support Services Division

Table 6 - The Jail Reinterview Program

	Pretrial admissions	Offender interviews	Offenders released	Released last year
OCT	757	656	148	342
NOV	637	554	180	293
DEC	670	614	164	260

Table 6a - Pre-trial bail and probation caseloads

	Pretrial Bail Case Starts	Client Supv. Starts	Split Sentence Starts	Pretrial bail cases
OCT	2,050*	666	230	12,665*
NOV	2,050*	696	198	12,665*
DEC	2,050*	712	206	12,665*
DEC '19	2,050*	1,610	323	12,665*

* CSSD estimates

Chart 3 – Prison population

First week of the month, avg. daily count (ADC)

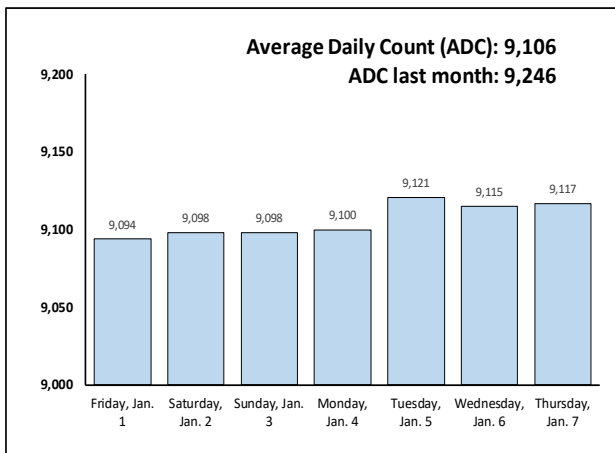


Chart 6 – Monthly DOC Admissions

December 2019 through December 2020

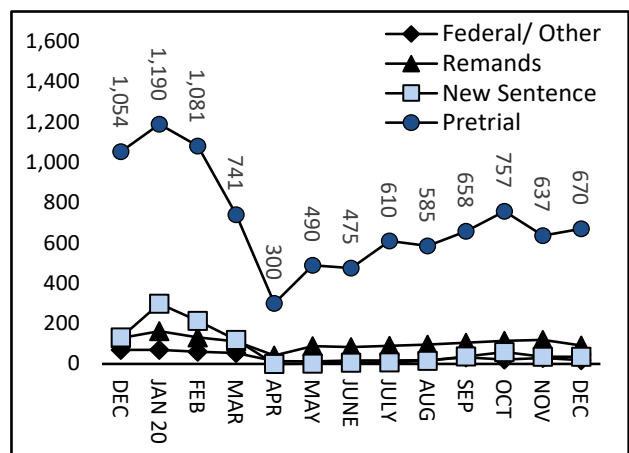


Chart 4 – Prison population, first-of-month

2018, 2019, 2020 and 2021

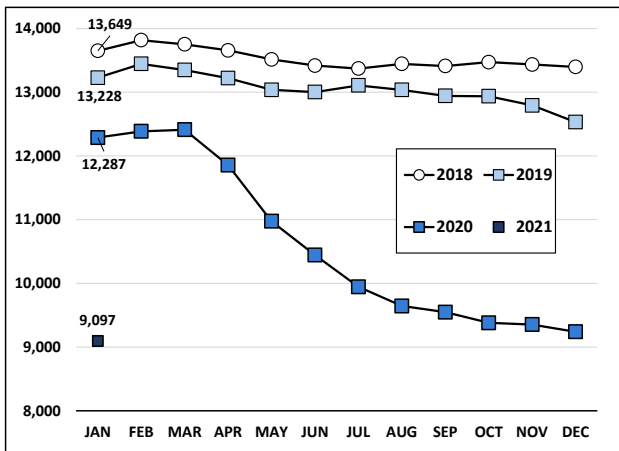


Chart 7 – Remands from community release

December 2020

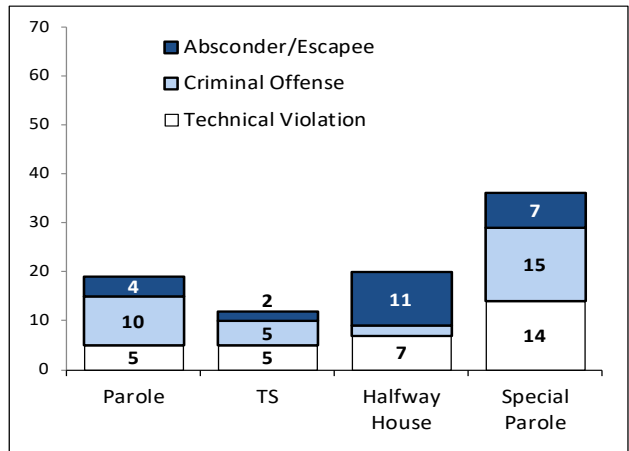


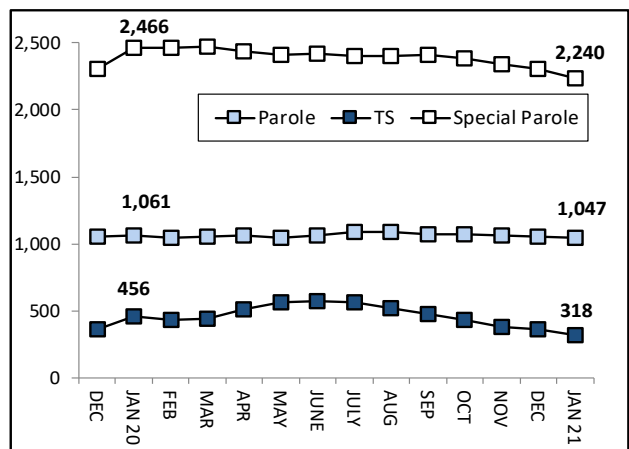
Chart 5 – Statewide Arrests

2020 and 2021

OPM CJPPD is working with its partners to solidify a new logic to report current and historical arrest information. Readers can expect this chart to be revised and updated in subsequent editions of the *Monthly Indicators Report*.

Chart 8 – DOC community supervision

Dec. 1, 2019 through Jan. 1, 2021



Note: Data for all charts, except for Chart 5, was supplied by CT DOC. Data for Chart 5 are for new case starts in the state Criminal Motor Vehicle System (CRMVS). Chart 8 includes offenders in halfway houses.