

OPM - Criminal Justice Policy & Planning Division

Monthly Indicators Report

Highlights

- As covered in recent *Monthly Indicators Reports*, there has been a gradual, steady rise in the correction population over the summer months. Between May and August, the population increased 2%, from 8,946 to 9,131 people. Despite the recent growth, the number of incarcerated people is still 5% below the August 2020 level (9,648 people).
- In July 2021, 1,239 individuals began a probation term, a three-fold increase compared to the same time last year (403 people), providing another signal of increased criminal justice system activity. The increase was driven by people starting new probation terms following a court sentence. By contrast, split sentence probation starts, which occur following an incarceration term, declined slightly from a year ago (190 in July 2021, 243 in July 2020). While the increase in new probation starts corresponds with more current sentencing activity, split sentence probation starts are delayed because they follow an incarceration term.
- The tally of people supervised in community settings by the Department of Correction (DOC) has reached the lowest mark in a decade. The current level—3,565 people—surpasses the decade's previous low of 3,805 people in March 2015. While the parole population has been stable over the past year, both the Special Parole and Transitional Supervision populations shrank by 27% and 72% respectively (see Chart 8).

Prison Population Forecast

There is a modest but widening divergence between OPM's forecast and the actual correction population (i.e., the average daily count). In August, the actual population was 3% higher than the forecast (9,143 compared to 8,869). OPM's estimate differed from the prison population by 274 individuals in August, a 155-person difference over the prior month. This faster-than-anticipated correction population growth is partially attributable to a growing pretrial population as the sentenced population is relatively flat.

Pretrial admissions, which are the inputs into the unsentenced population, are still operating at approximately 75% of pre-pandemic levels. However, "releases from court," a key means of egress from the unsentenced population, is generally operating at less than half of pre-pandemic levels. Thus, while pretrial admissions remain below pre-pandemic levels, the pretrial population has grown due to reductions in exits via releases from court.

TABLE 1 – Prison Population Forecast

	Avg. Daily OPM 2021	Inmate
	Count	Forecast difference
JAN '21	9,106	-
FEB	9,044	9,044
MAR	9,048	9,020
APR	8,931	8,999
MAY	8,955	8,957
JUN	8,965	8,914
JUL	9,009	8,890
AUG	9,143	8,869
SEP		8,827
OCT		8,890
NOV		8,908
DEC		8,924
JAN '22		8,864
FEB		8,986

Avg. Daily Count (ADC) for 1st week of month

Especially since the onset of the pandemic, OPM has scanned criminal justice system indicators to identify or anticipate the emergence of patterns of trends affecting key components. This month's observation, about a growing pretrial population apparently driven by a reduction in egresses than an increase in inputs, caught our attention. Whether this growth is a passing indicator, soon tempered by increases in outflow as court operations further adapt and normalize, is an indicator OPM will continue to observe.

Chart 1 – Actual Prison Population Against the OPM Forecasts

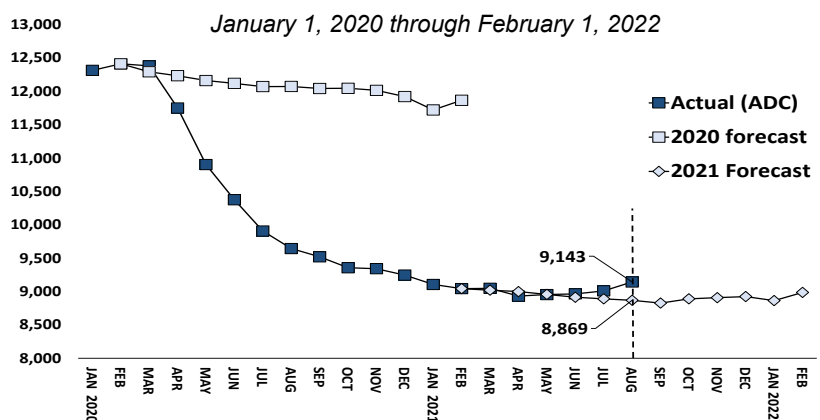


Chart 2 - Criminal Justice, Monthly Counts and Flows

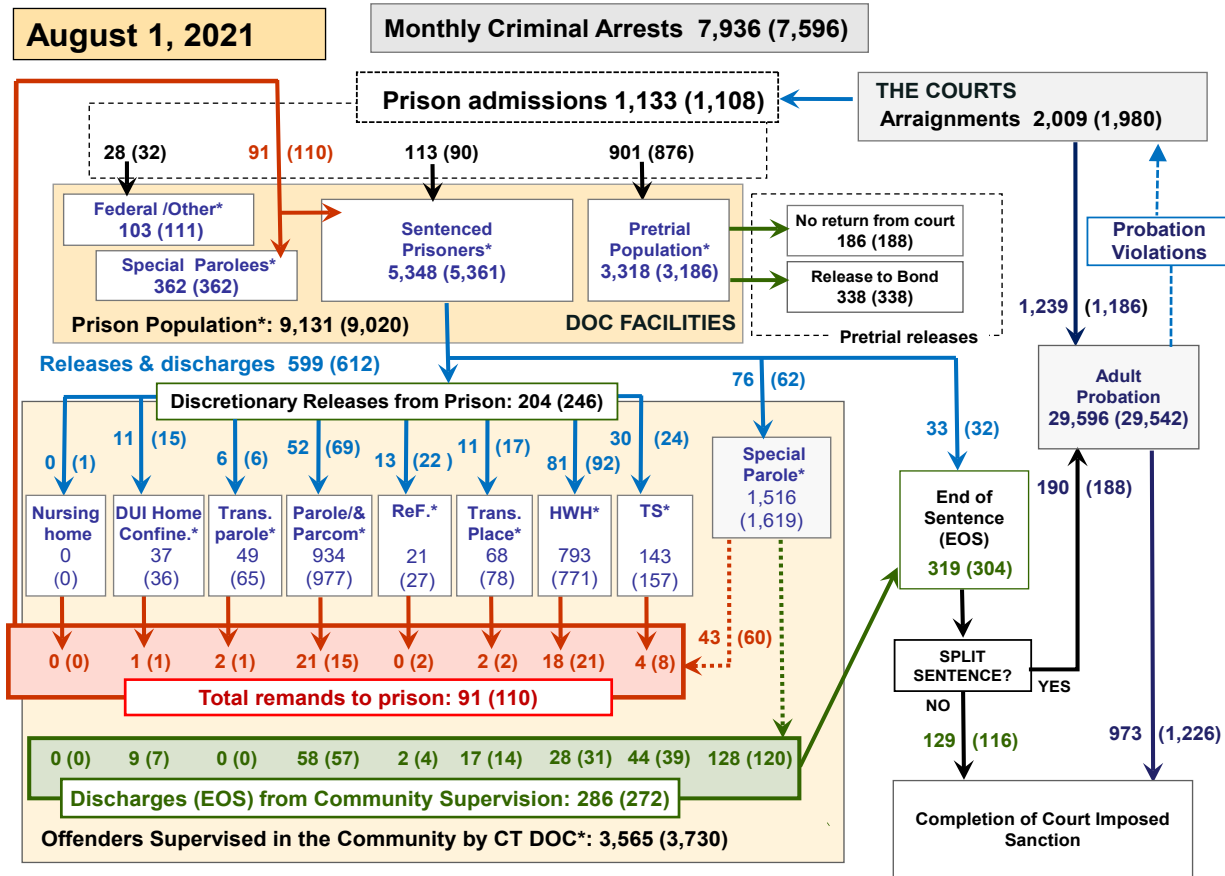


Chart 2 contains monthly operations data for July 2021 and daily counts reported on August 1, 2021. Asterisks (*) indicate the daily count on August 1st. Figures for last month are enclosed by parentheses. Sources: Arrests – CRMVS, via CJIS, Court and probation data - CSSD, all other data - CT DOC.

Chart 2a – Probation Starts and New Sentences Over Time

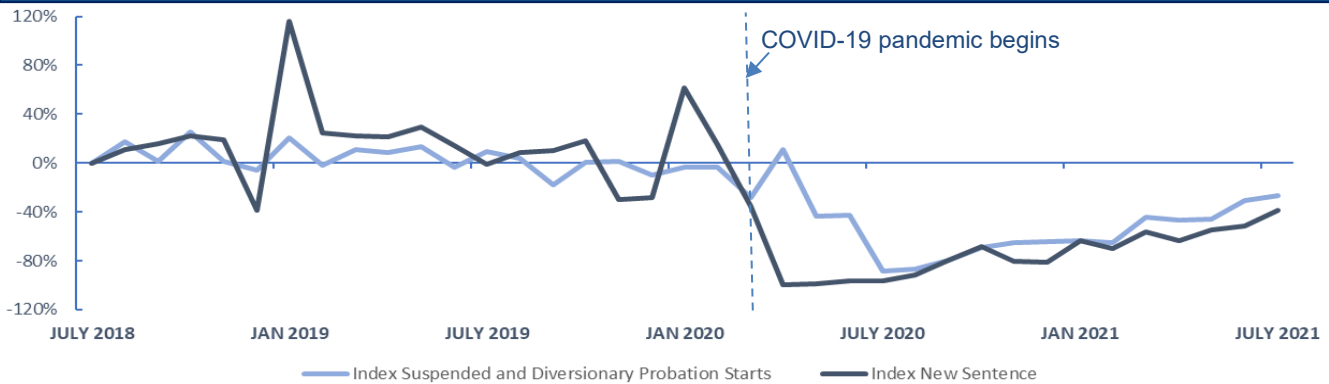


Chart 2a illustrates the relationship between new sentences and new probation terms (either for suspended or diversionary probation). We would assume these metrics will correspond relatively well because probation starts are a function of a newly imposed sentence.

Chart 2a indexes these metrics from July 2018 and graphs their percent change to the present. Pre-pandemic, probation starts followed a similar pattern as new sentences, albeit at lower magnitudes, as probation terms are but one of several sentencing possibilities, such as terms of incarceration, fines, and restitution.

With COVID-19's arrival in 2020, these indices diverged: new sentences decreased drastically while probation starts avoided the same steep drop. This separation likely is partially attributable to court processes, with decisions to place people on probation being made prior to necessary court adaptations to pandemic-related public health guidance.

Chart 2a captures the resiliency that began in July 2020, with both metrics re-coupling and gradually regressing toward pre-pandemic levels. Indeed, late 2020 and 2021 trends, whereby new sentence and probation starts follow a similar trajectory, demonstrate the continued adaptation of court operations to ongoing pandemic protocols.

Table 2 - First-of-Month Totals

	2021		2020		% Change	
	June 1	July 1	Aug. 1	Aug. 1	Monthly	Annual
DOC Facilities						
Federal/Other	93	111	103	127	-7.2%	-18.9%
Sentenced	5,424	5,361	5,348	6,660	-0.2%	-19.7%
Special Parole	356	362	362	308	0.0%	17.5%
Pretrial	3,087	3,186	3,318	2,553	4.1%	30.0%
Total	8,960	9,020	9,131	9,648	1.2%	-5.4%
DOC Community						
Transfer Parole	75	65	49	169	-24.6%	-71.0%
Parole/ Parcom Total	997	977	934	962	-4.4%	-2.9%
Parole	823	798	756	789	-5.3%	-4.2%
Parcom @ CT	174	179	178	173	-0.6%	2.9%
Furlough	22	27	21	91	-22.2%	-76.9%
Trans Placement	77	78	68	91	-12.8%	-25.3%
DUI/Home confine.	29	36	37	67	2.8%	-44.8%
Halfway House Total	773	771	793	872	2.9%	-9.1%
Comm Release	377	399	407	428	2.0%	-4.9%
TS	3	3	5	21	66.7%	-76.2%
Parole	131	134	135	131	0.7%	3.1%
Transfer Parole	18	7	7	28	0.0%	-75.0%
Special Parole	244	228	239	264	4.8%	-9.5%
TS	188	157	143	501	-8.9%	-71.5%
Nursing home	0	0	0	4	-	-100.0%
Special Parole	1,736	1,619	1,516	2,142	-6.4%	-29.2%
Total	3,897	3,730	3,565	4,899	-4.4%	-27.2%

Table 2a - Monthly Admissions, Releases & Discharges

	2021		2020		% Change	
	MAY	JUNE	JULY	JULY	Monthly	Annual
Admissions						
Federal/Other	22	32	28	17	-12.5%	64.7%
Remands	95	110	91	90	-17.3%	1.1%
DUI	2	1	1	0	0.0%	-
Transfer Parole	0	1	2	0	100.0%	-
Parole	15	15	21	15	40.0%	40.0%
Trans Plac/Furlough	1	4	2	0	-50.0%	-
HWH	16	21	18	16	-14.3%	12.5%
TS	5	8	4	11	-50.0%	-63.6%
Special Parole	56	60	43	43	-28.3%	0.0%
New Sentence	84	90	113	7	25.6%	1514.3%
VOP	17	22	23	0	4.5%	-
Pretrial	754	876	901	610	2.9%	47.7%
Total	955	1,108	1,133	724	2.3%	56.5%
Releases and discharges						
Transfer Parole	24	6	6	24	0.0%	-75.0%
Parole	79	69	52	66	-24.6%	-21.2%
Furlough	14	22	13	45	-40.9%	-71.1%
Trans. Placement	20	17	11	21	-35.3%	-47.6%
Home Confinement DUI	6	15	11	4	-26.7%	175.0%
HWH	77	92	81	97	-12.0%	-16.5%
TS	29	24	30	67	25.0%	-55.2%
Special Parole	79	62	76	83	22.6%	-8.4%
Nursing home	0	1	0	0	-	-
End of Sentence	291	304	319	414	4.9%	-22.9%
Total	619	612	599	821	-2.1%	-27.0%
Pretrial Releases*						
From Court	134	188	186	71	-1.1%	162.0%
Release to Bond	314	338	338	356	0.0%	-5.1%

* Totals reflect events, not individual offenders

DOC - Community Release Unit (CRU)

Table 3 - Case reviews and release metrics

	Cases				Approval Rate
	Reviewed	Approved	Denied	Continued	
MAY	232	104	39	25	45%
JUNE	289	133	45	40	46%
JULY 21	285	124	39	37	44%
JULY 20	310	153	57	30	49%

Note: Figures published here are based on the operational data available at the time of publication. Data in subsequent issues may not agree.

Board of Pardons and Paroles

Table 4 - Parole hearings, new cases

	Parole Hearings	Paroles granted	Grant rate	Granted: Prior Year	Granted: Two Years Prior
MAY	94	57	61%	86	78
JUNE	91	59	65%	77	74
JULY	91	64	70%	79	62

Table 4a - Other BOPP actions

	Reparole from revocation	Reparole from rescission	Closed interest cases	Special parole cases	Transfer parole cases
MAY	11	0	9	23	13
JUNE	25	0	13	18	15
JULY 2021	6	1	12	9	25
JULY 2020	10	0	22	14	34

The Pretrial Population

Table 5 - Bond ranges for pretrial detainees

Bond amount	June 1, 2021	July 1, 2021	Aug. 1, 2021	Aug. 1, 2020
Less than \$20K	366	346	364	279
\$20K to <\$50K	370	421	439	325
\$50K to <\$100K	498	504	543	433
\$100K or higher	2,076	2,151	2,203	1,644
Persons w/bonds	3,310	3,422	3,549	2,693
Over \$1M	348	349	373	250

Table 5a - Pretrial, weeks since admission

Weeks since last DOC admit	June 1, 2021	July 1, 2021	Aug. 1, 2021	Aug. 1, 2020
< 1 week	226	242	300	165
1 to < 3 weeks	200	212	236	157
3 to < 10 weeks	584	599	611	318
10 to < 30 weeks	849	892	938	763
30 wks or more	1,454	1,486	1,466	1,290
Pretrial prisoners	3,313	3,431	3,551	2,693

Table 5b - Pretrial admits, new offenders

	MAY 2021	JUNE 2021	JULY 2021	JULY 2020
Arraignments	1,633	1,980	2,009	1,321
Pretrial Admits	754	876	901	610
New to DOC	194	209	214	141
% New	26%	24%	24%	23%

Court Support Services Division

Table 6 - The jail reinterview program

	Pretrial admissions	Offender interviews	Offenders released	Released last year
MAY	754	597	174	189
JUNE	876	809	192	165
JULY	901	776	213	184

Table 6a - Pretrial bail and probation caseloads

	Pretrial Bail Case Starts	Client Supv. Starts	Split Sentence Starts	Pretrial bail cases
MAY	2,050*	945	171	12,665*
JUNE	2,050*	1,186	188	12,665*
JULY	2,050*	1,239	190	12,665*
JULY '20	2,050*	403	243	12,665*

* CSSD estimates

Chart 3 – Prison Population

First week of the month, avg. daily count (ADC)

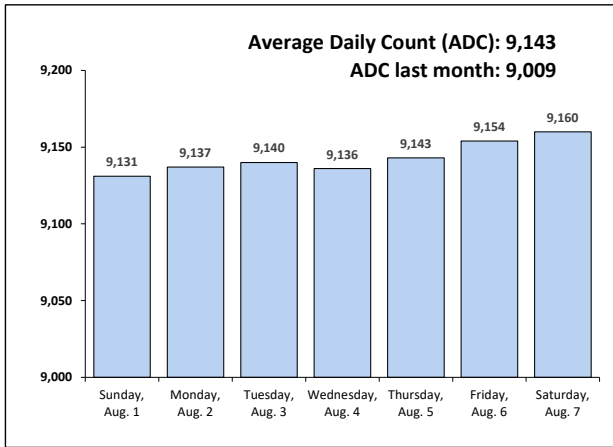


Chart 6 – Monthly DOC Admissions

July 2020 through July 2021

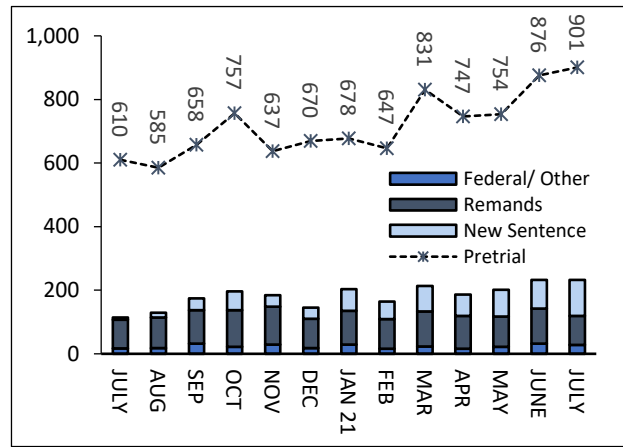


Chart 4 – Prison Population, First-of-Month

2018, 2019, 2020 and 2021

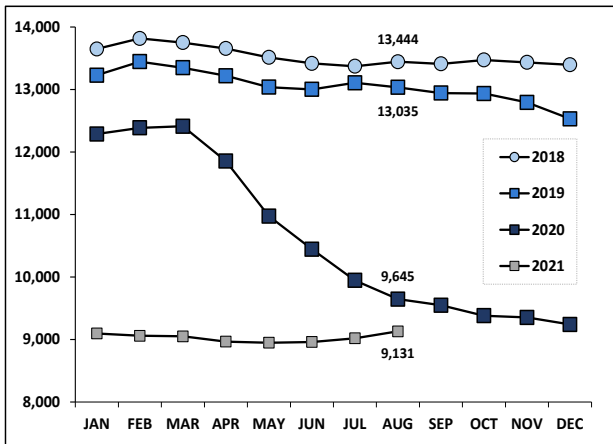


Chart 7– Remands from Community Release

July 2021

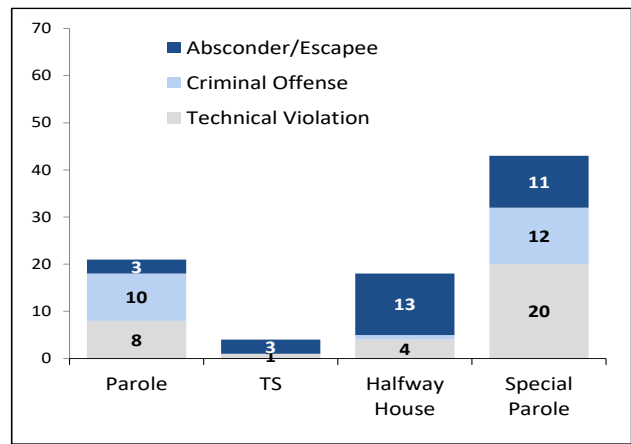


Chart 5 – Statewide Arrests

2020 and 2021

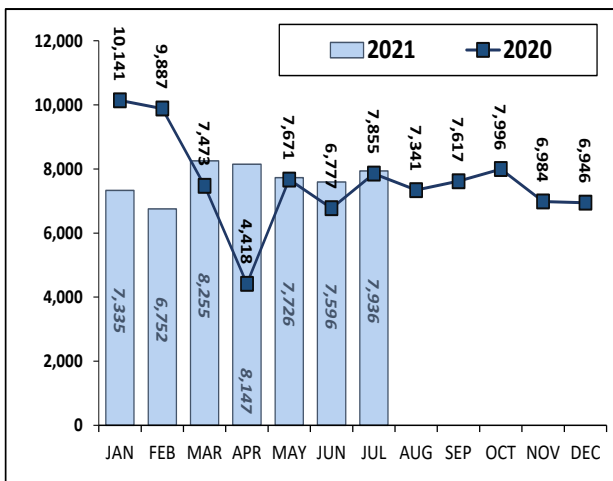
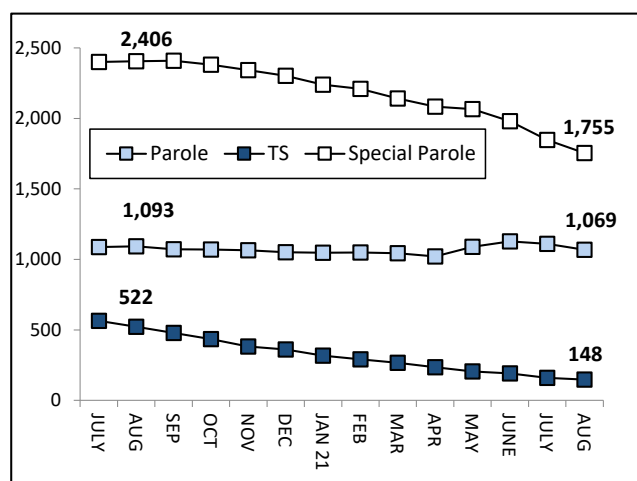


Chart 8 – DOC Community Supervision

July 1, 2020 through Aug. 1, 2021



Note: Data for all charts, except for Chart 5, was supplied by CT DOC. Data for Chart 5 are for new case starts in the state Criminal Motor Vehicle System (CRMVS). Chart 8 includes offenders in halfway houses.