

OPM - Criminal Justice Policy & Planning Division

Monthly Indicators Report

Highlights

- On May 1, 2018 - 13,514 people were incarcerated in Connecticut's prisons and jails, 146 fewer than the figure for April 1st. Last year, on May 1st the count was 14,502.
- The CT DOC, joining a growing number of states, expects to introduce electronic tablets to inmates in the coming months. Taking security concerns into consideration, the tablets are intended to help offenders develop life skills, stay connected with loved ones and reduce incidents in facilities.
- Under his discretion, the CT DOC Commissioner has authorized the award of the balance of RREC credits, up to a maximum of 5 days per month to inmates who have demonstrated positive behaviors and complied with treatment over the past two years. The impact this will have on the population is unknown, but it will likely contribute, albeit in a small way, to the ongoing reduction of the sentenced population.
- Over the past ten years, the prison population on the whole has been in steady decline; one segment, the women held pretrial has not followed the overall pattern. (see chart 2a)
- The size of the special parole population continues to be of concern. As it stands now, special parolees account for 42% of offenders under DOC community supervision. In an effort to curb future use of special parole, the CT legislature passed, unanimously in both chambers, Senate Bill 14, which among other things, prohibits its use unless necessary for public safety.

Prison Population Forecast

The prison population is tracking along the path that OPM predicted in February. That said, the months of April and May are generally less volatile in terms of wide swings in the prison population.

The sentenced population continues to see the largest declines. Down over 9% since May 2017, the drawdown of the sentenced population has been caused by a number of factors. Over the last two years, this paper has documented how improvements to the community release system at the DOC have enhanced efficiencies on the back end of the system, getting more eligible and suitable inmates out to community supervision ahead of their end of sentence dates.

At the same time, the number of newly sentenced offenders has declined in a subtle but sizeable way. The number of offenders entering prison on sentenced status has declined.

In addition, there is some evidence, in Table 5a, that a backup is developing in the pretrial population. Taken on a whole, the number of pretrial offenders has been relatively flat, but those offenders held for long periods on pretrial status has increased. One year ago, 1350 offenders had been held on pretrial status for over 10 weeks, today it's 1580. A large portion of these offenders are likely to pick up a sentence, but in the interim they are being counted and treated otherwise.

TABLE 1 – Prison Population Forecast

	Avg. Daily Count	OPM 2018 Forecast	Inmate difference
JAN '18	13,688	-	-
FEB	13,819	13,819	-
MAR	13,753	13,701	-52
APR	13,652	13,607	-45
MAY	13,499	13,550	51
JUN	-	13,465	-
JUL	-	13,433	-
AUG	-	13,320	-
SEP	-	13,265	-
OCT	-	13,259	-
NOV	-	13,230	-
DEC	-	13,103	-
JAN '19	-	12,901	-
FEB	-	13,093	-

Avg. Daily Count (ADC) for 1st week of month

Chart 1 – Actual prison population against the OPM forecasts

January 1, 2017 through February 1, 2019

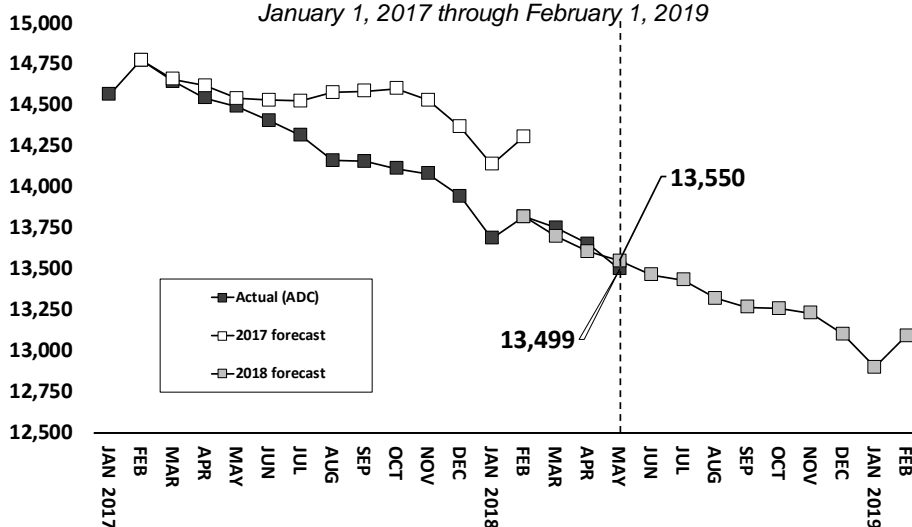


Chart 2 - Criminal justice, monthly counts and flows

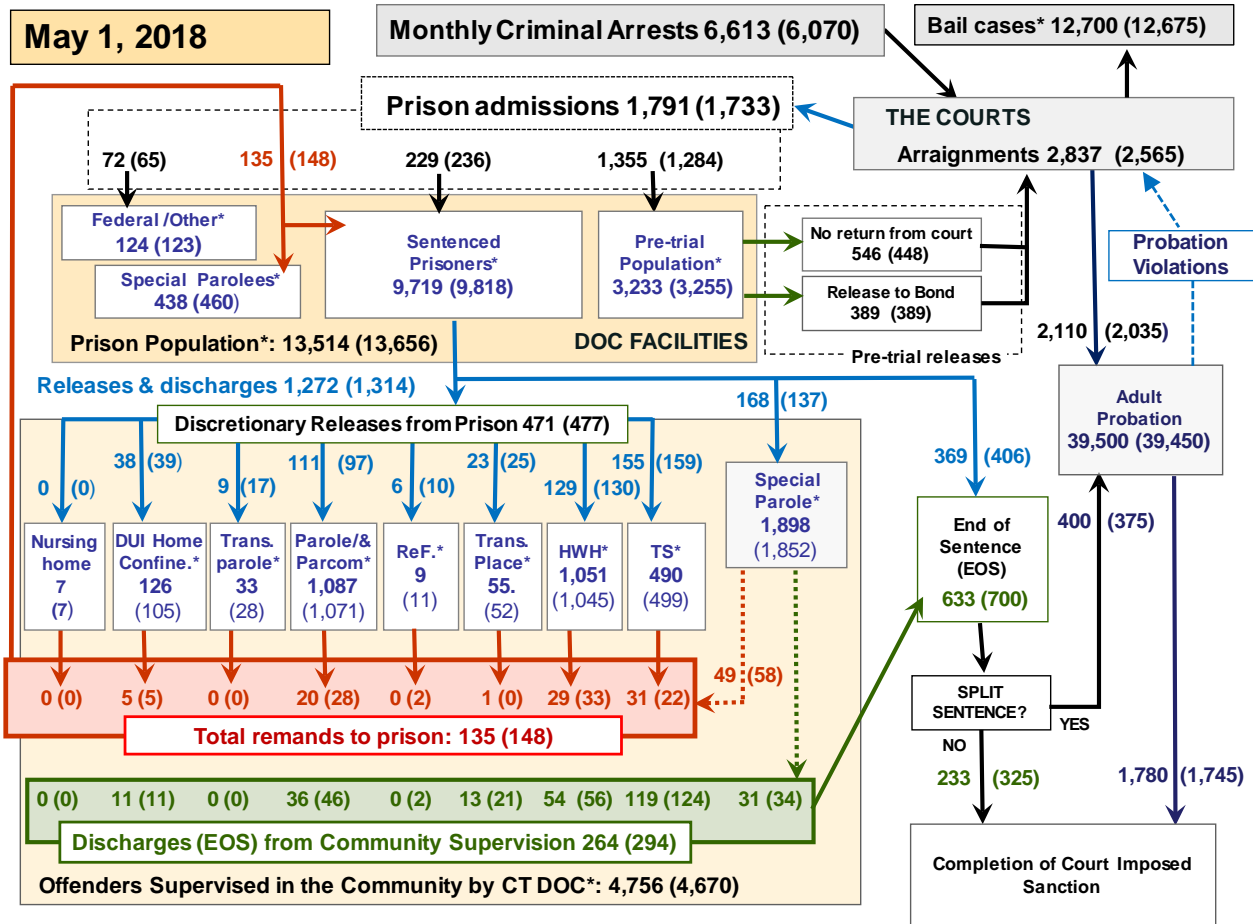
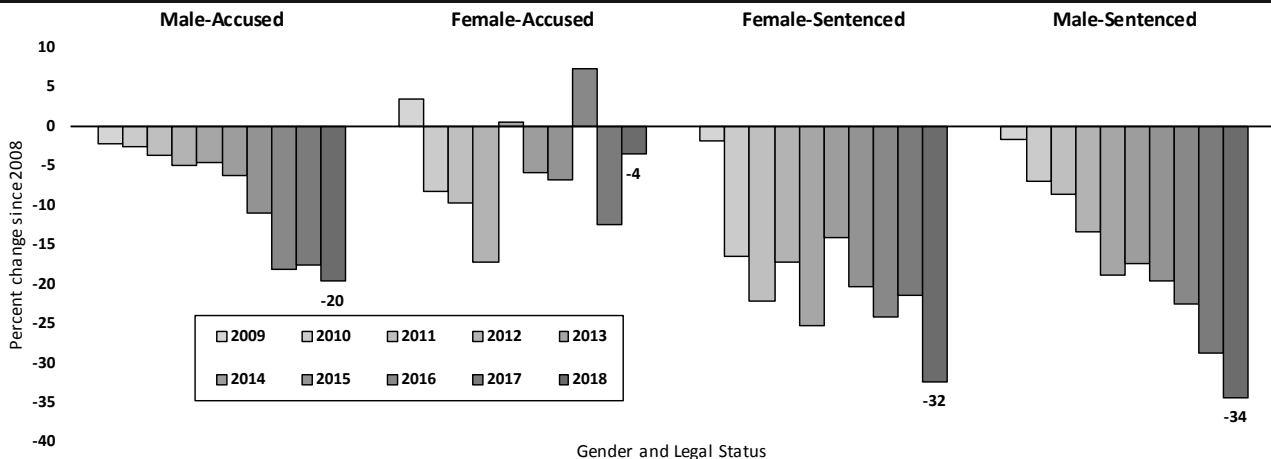


Chart 2 contains monthly operations data for April 2018 and daily counts reported on May 1, 2018. Asterisks (*) indicate the daily count on May 1st. Figures for last month are enclosed by parentheses. Sources: Arrests - OBTS, Court and probation data - CSSD, all other data - CT DOC. Note: Judicial Branch data this month is estimated.

Chart 2a – Changes in the women’s pretrial population



Between January 2008 and January 2018, the number of male sentenced prisoners – the largest component of state’s incarcerated population - declined by 34%, from 14,098 to 9,262. The number of sentenced women dropped by 32% (900 to 609) during the same period. Among the state’s pretrial population, i.e., persons awaiting trial, the declines were much less impressive.

Between 2008 and 2018, the male pre-trial population declined by 20%, 3,514 to 2,826. In stark contrast, the female pre-trial population declined by only 4% over the course of the decade, dropping from 339 to 327.

This begs the question, why have substantial reductions in the size of the state’s prison population had so little effect on the number of women held on pre-trial status in the state?

Table 2 - First-of-month totals

	2018	2018	2018	2017	% Change	
	Mar. 1	Apr. 1	May 1	May 1	Monthly	Annual
DOC Facilities						
Federal/Other	137	123	124	129	0.8%	-3.9%
Sentenced	9,968	9,818	9,719	10,739	-1.0%	-9.5%
Special Parole	469	460	438	458	-4.8%	-4.4%
Pre-trial	3,177	3,255	3,233	3,176	-0.7%	1.8%
Total	13,751	13,656	13,514	14,502	-1.0%	-6.8%
DOC Community						
Transfer Parole	20	28	33	10	-	-
Parole/ Parcom Total	1,088	1,071	1,087	1,149	1.5%	-5.4%
Parole	927	904	919	986	1.7%	-6.8%
Parcom @ CT	161	167	168	163	0.6%	3.1%
Furlough	9	11	9	47	-	-
Trans Placement	58	52	55	54	5.8%	1.9%
DUI/Home confine.	86	105	126	115	20.0%	9.6%
Halfway House Total	1,062	1,045	1,051	971	0.6%	8.2%
Comm Release	527	517	508	490	-1.7%	3.7%
TS	54	42	45	58	7.1%	-22.4%
Parole	151	154	161	124	4.5%	29.8%
Transfer Parole	1	2	1	0	-	-
Special Parole	329	330	336	299	1.8%	12.4%
TS	493	499	490	587	-1.8%	-16.5%
Nursing home	7	7	7	7	-	-
Special Parole	1,824	1,852	1,898	1,714	2.5%	10.7%
Total	4,650	4,670	4,756	4,654	1.8%	2.2%

Table 2a - Admissions, releases & discharges

	2017	2018	2018	2017	% Change	
	Feb.	Mar.	April	April	Monthly	Annual
Admissions						
Federal/Other	56	65	72	60	10.8%	20.0%
Remands	132	148	135	128	-8.8%	5.5%
DUI	5	5	5	7	-	-
Parole	23	28	20	24	-28.6%	-16.7%
Trans Plac/Furlough	0	2	1	3	-	-
HWH	25	33	29	24	-12.1%	20.8%
TS	23	22	31	22	40.9%	40.9%
Special Parole	56	58	49	48	-15.5%	2.1%
New Sentence	232	236	229	225	-3.0%	1.8%
VOP	76	72	58	57	-19.4%	1.8%
Pre-trial	1,143	1,284	1,355	1,271	5.5%	6.6%
Total	1,563	1,733	1,791	1,684	3.3%	6.4%
Releases and discharges						
Transfer Parole	12	17	9	5	-	-
Parole	77	97	111	84	14.4%	32.1%
Furlough	9	10	6	36	-40.0%	-83.3%
Trans. Placement	27	25	23	23	-8.0%	0.0%
Home Confinement DU	29	39	38	29	-2.6%	31.0%
HWH	106	130	129	138	-0.8%	-6.5%
TS	117	159	155	170	-2.5%	-8.8%
Special Parole	124	137	168	108	22.6%	55.6%
Nursing home	1	0	0	1	-	-
End of Sentence	572	700	633	619	-9.6%	2.3%
Total	1,074	1,314	1,272	1,213	-3.2%	4.9%
Pre-trial Releases*						
From Court	441	448	546	445	21.9%	22.7%
Release to Bond	376	389	389	371	0.0%	4.9%

* Totals reflect events, not individual offenders

DOC - Community Release Unit (CRU)

Table 3 - Case reviews and release metrics

	Cases				Approval
	Reviewed	Approved	Denied	Continued	Rate
Feb.	634	304	114	78	48%
March	713	344	101	107	48%
Apr.	741	365	108	105	49%
April '17	739	357	117	95	48%

Board of Pardons and Paroles

Table 4 - Parole hearings, new cases

	Parole Hearings	Paroles granted	Grant rate	Paroles granted, 2016	Paroles granted, 2015
Feb.	139	77	55%	100	75
Mar.	166	91	55%	95	93
Apr.	185	90	49%	102	101

Table 4a - Other BOPP actions

	Reparole from revocation	Reparole from rescission	Closed interest cases	Special parole cases	Transfer parole cases
Feb.	41	3	13	24	11
Mar.	43	4	26	34	11
Apr.	46	0	24	49	12
Apr. '17	34	4	34	44	15

The pre-trial population

Table 5 - Bond ranges for pre-trial detainees

Bond amount	Mar. 1, 2018	Apr. 1, 2018	May 1, 2018	May 1, 2017
Less than \$20K	507	468	468	532
\$20K to < \$50K	467	475	468	523
\$50K to <\$100K	678	705	702	721
\$100K or higher	1,676	1,699	1,692	1,420
Persons w/bonds	3,322	3,347	3,335	3,244
Over \$1M	188	192	195	150

Table 5a - Pre-trial, weeks since admission

Weeks since last DOC admit	Mar. 1, 2017	Apr. 1, 2018	May 1, 2018	May 1, 2017
< 1 week	416	448	389	454
1 to < 3 weeks	274	313	326	351
3 to < 10 weeks	1,021	988	1,042	1,082
10 to < 30 weeks	742	680	661	605
30 wks or more	870	918	919	755
Pre-trial prisoners	3,323	3,347	3,337	3,247

Table 5b - Pre-trial admits, new offenders

	Feb. 2018	Mar. 2018	Apr. 2018	Apr. 2017
Arraignments	2,446	2,565	2,837	2,591
Pre-trial Admits	1,143	1,284	1,355	1,271
New to DOC	298	345	338	335
% New	26%	27%	25%	26%

Court Support Services Division

Table 6 - The Jail Re-interview Program

	Pre-trial admissions	Offender interviews	Offenders released	Released last year
Feb.	1,143	805	311	390
Mar.	1,284	833	333	481
Apr.	1,355	937	335	417

Table 6a - Pre-trial bail and probation caseloads

	Pre-trial Bail Case Starts	Client Supv. Starts	Split Sentence Starts	Pre-trial bail cases
Feb.	2,080*	2,040*	370*	12,670*
Mar.	2,085*	2,035*	375*	12,675*
Apr.	2,070*	2,110*	400*	12,700*
Apr. '17	2,075	1,980	345	12,737

Note: Figures published here are based on the operational data available at the time of publication. Data in subsequent issues may not agree.

Chart 3 – Prison population

First week of the month, avg. daily count (ADC)

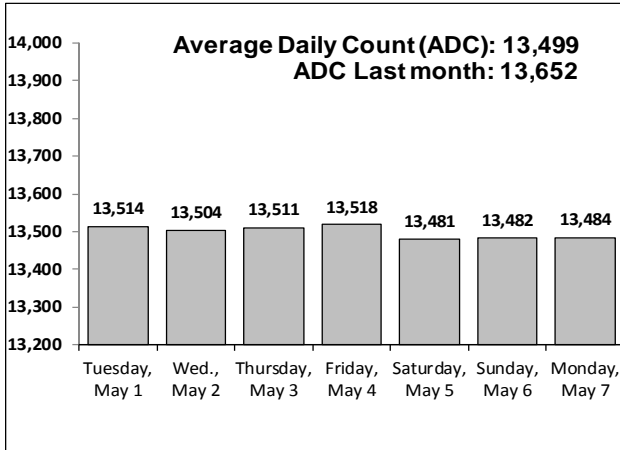


Chart 6 – Monthly DOC Admissions

Mar. 2017 through Apr. 2018

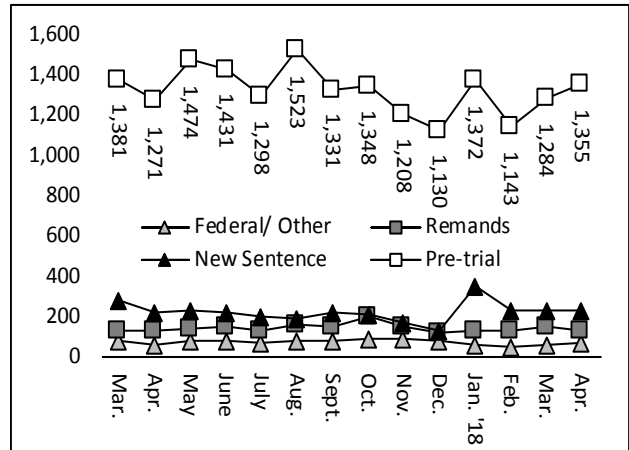


Chart 4 – Prison population, first-of-month

2015, 2016, 2017 and 2018

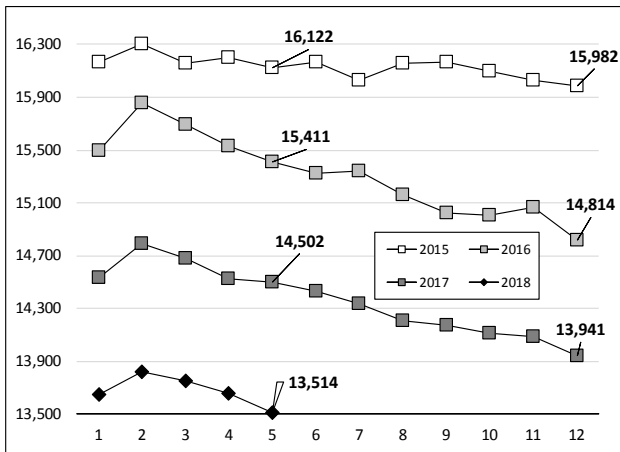


Chart 7 – Remands from community release

April 2018

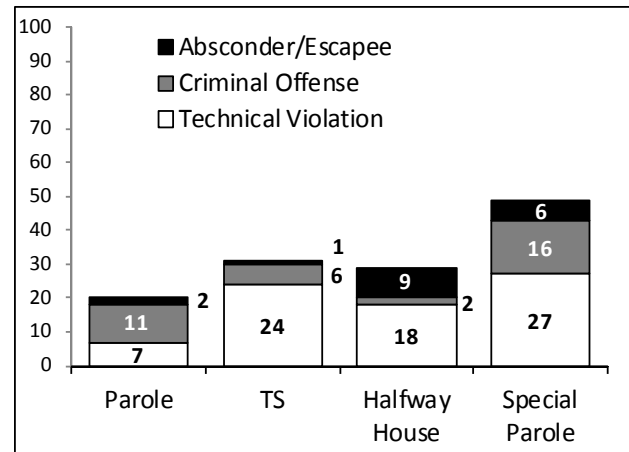


Chart 5 – Statewide criminal arrests

2017 and 2018

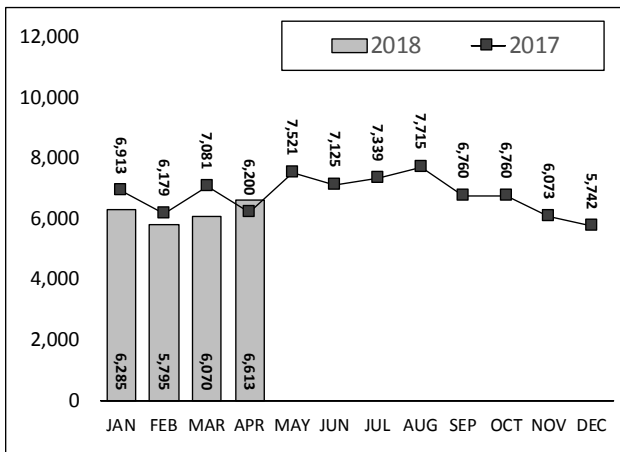
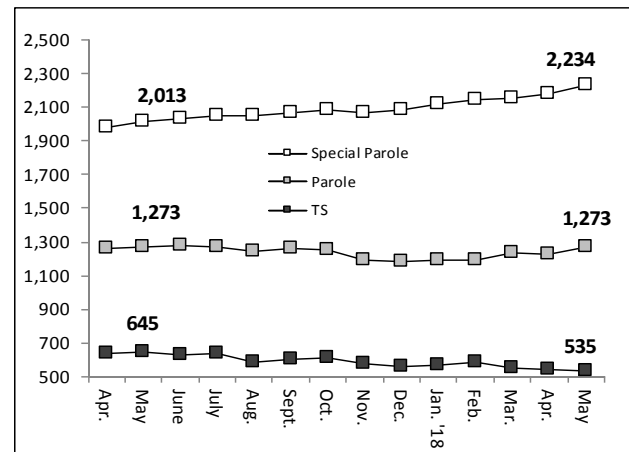


Chart 8 – DOC community supervision

March 1, 2017 through April 1, 2018



Note: Data for all charts, with the exception of Chart 5, was supplied by CT DOC. Data for Chart 5 are for new case starts in the state Offender-Based Tracking System (OBTS). Chart 8 includes offenders in halfway houses.