

OPM - Criminal Justice Policy & Planning Division

Monthly Indicators Report

Highlights

- On September 1, 2015, 16,168 people were incarcerated in Connecticut prisons. Since last September, the prison population shrank by over 400 prisoners.
- According to data from the state's Offender Based Tracking System (OBTS), arrests in August were up by 11% compared to July (see chart 5). Oddly, the number of arraignments were down 7%, from 3,294 in July to 3,069 in August. Pre-trial admissions to prison also fell from 1,611 in July to 1,570 last month. In a typical month, these three numbers generally rise and fall in rough harmony.
- The number of parole hearings appears to be ramping up. The 196 hearings held in August were the most since September 2014 when 210 case were reviewed. The number of offenders on parole status also appeared to be edging up gradually (see chart 8).
- In the jails, the number of offenders held on bonds of less than \$50K is down from 1,345 to 1,201, or 11%, compared to last year (see Table 5). The number of pre-trial detainees held for less than 3 weeks also dropped by 10% in the same period (Table 5a).
- Total remands in August were down 26.7% compared to July, and 20.3% compared to last year (see table 3). Remands were down across the board, for parolees, special parolees, offenders in half-way houses and persons on transitional supervision (TS)

To have the Monthly Indicators Report emailed to you each month. Please email: opm.mir@ct.gov In the subject line write: Send Monthly

Prison Population Forecast

The state's prison population has been trending within a percentage point's difference of the course projected by OPM in February. Ten years ago, it was assumed that the prison population would expand by 300 to 500 prisoners during the summer and early fall. More recently, during the last two years, this has not happened and the prison population has remained essentially flat from March through September.

It is not clear why the summer bulge has evaporated, but some data suggests that the prison system appears to be working more efficiently. Although performance can still be spotty, the current Commissioner appears to have broad support within the DOC for his four pillars and considerable progress has been made in bolstering and improving the DOC's re-entry efforts.

On the front end of the system, the Jail Re-interview Program is very effective. Its penetration into the jails is reducing significant back-logs in the pre-trial population. On the back end, the DOC's Community Release Unit is developing a uniform statewide process to review the cases of all eligible offenders prior to possible community release. Finally, the Parole Board, a critical component in the state's re-entry system, is upping the of number parole hearings and the agency appears to be returning to operational levels not seen in years.

TABLE 1 – Prison Population Forecast

	Avg. Daily Count	OPM 2015 Forecast	Inmate difference
JAN '15	16,204	-	-
FEB	16,302	16,343	41
MAR	16,124	16,136	12
APR	16,161	16,079	(82)
MAY	16,093	16,052	(41)
JUN	16,121	16,039	(82)
JUL	16,006	16,061	55
AUG	16,160	16,078	(82)
SEP	16,143	16,085	(58)
OCT	-	16,117	-
NOV	-	16,112	-
DEC	-	15,948	-
JAN '16	-	15,686	-
FEB	-	15,917	-

Avg. Daily Count (ADC) for 1st week of month

Chart 1 – Actual prison population against the OPM forecasts
January 1, 2014 through February 1, 2016

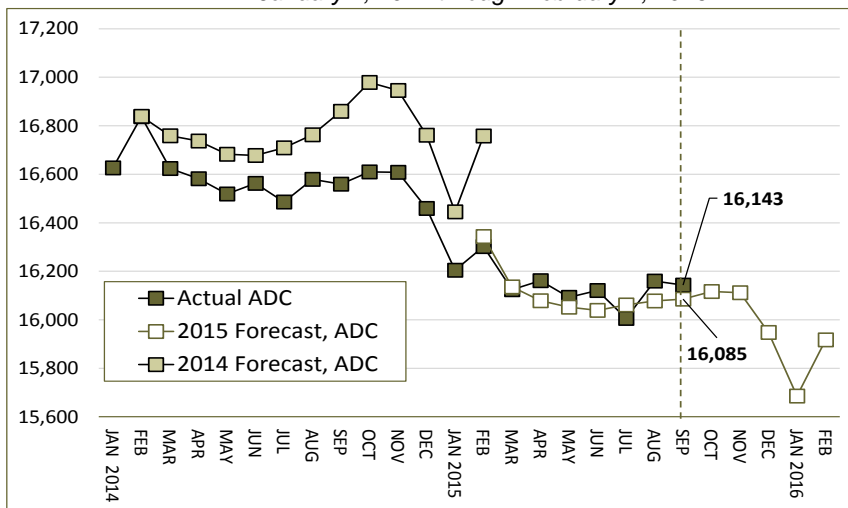
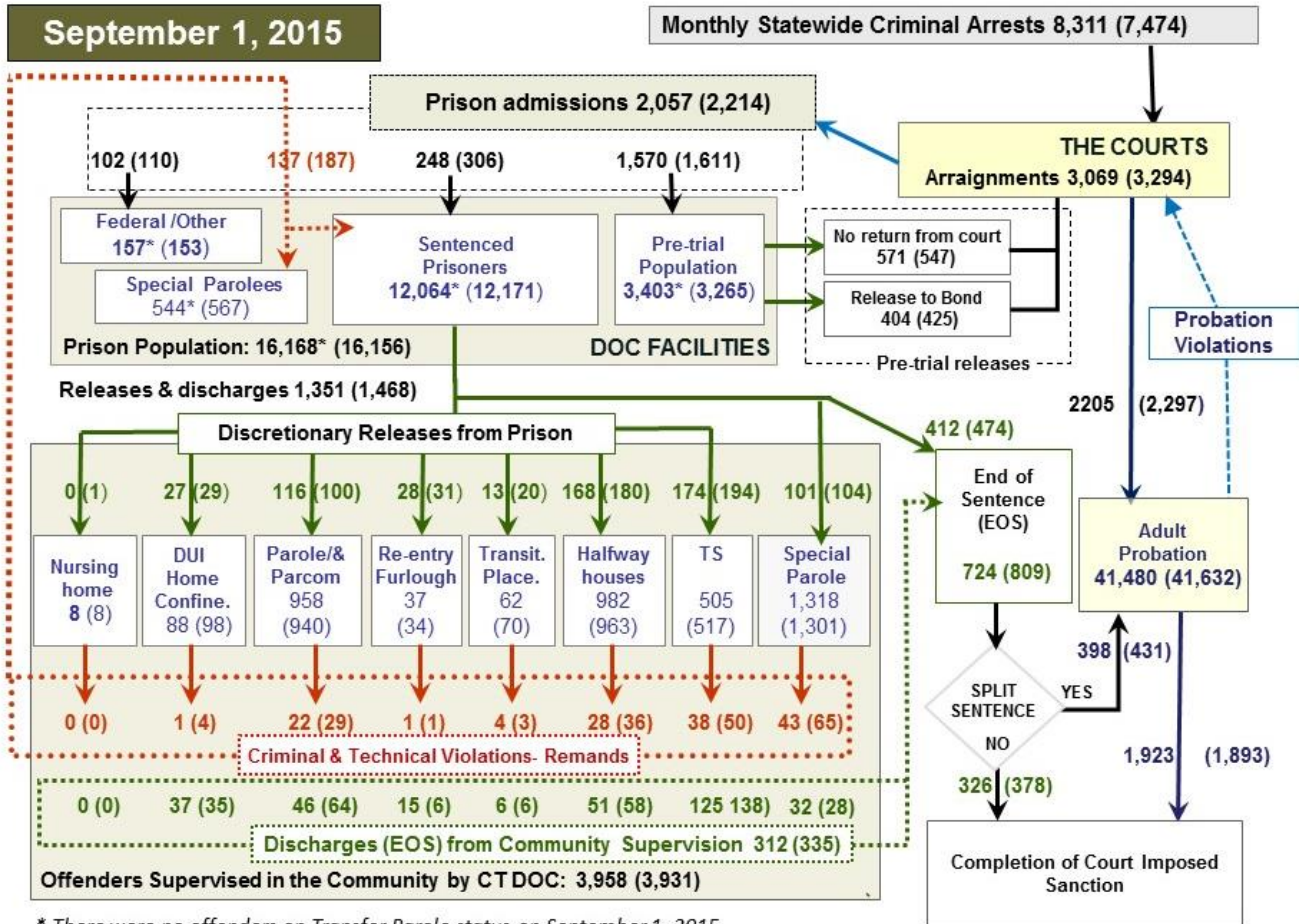


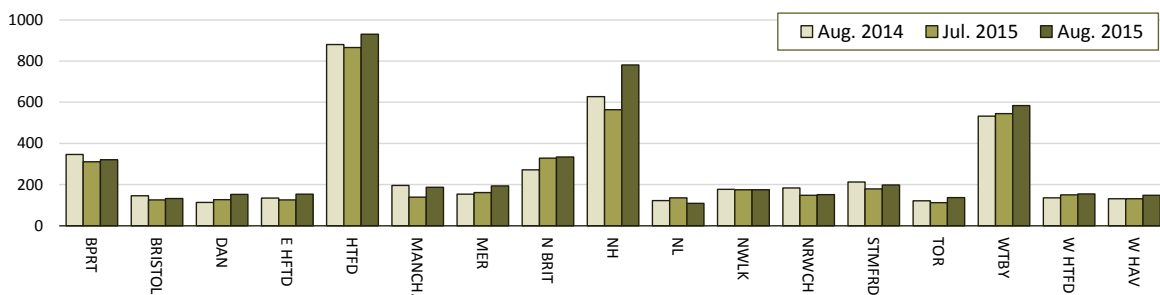
Chart 2 - Criminal justice, monthly counts and flows



* There were no offenders on Transfer Parole status on September 1, 2015.

Chart 2 contains monthly, operations data for the month of August 2015 and daily counts reported on September 1, 2015. Figures followed by asterisks (*) indicate the daily count on September 1st. Last month's figures are enclosed by parentheses. Sources: Arrests - OBTS, Court and probation data - CSSD, all other data - CT DOC.

Chart 2a – Monthly arrest patterns



As noted on page 1, the number of arrests jumped by 11% between July and August. At present, this is not a cause for concern because the number of statewide arraignments declined during the same period. This suggests either a glitch in the arrest data, or that these added arrests were not considered serious enough by the courts to be continued past presentment.

Chart 2a contains monthly arrest data for the 17 municipal police departments that regularly report over 100 arrests per month. Not surprisingly, Hartford, New Haven and Waterbury have very high levels of arrests relative to their populations.

The New Britain police report as many arrests as Bridgeport and many more than Stamford, despite the fact both Bridgeport and Stamford are considerably larger. The data indicates that arrests in Hartford, New Haven and Waterbury all increased between July and August.

Statewide, there were 837 more arrests reported in August than in July. These 17 police departments accounted for 520, or 62%, of these increased arrests. The jump in New Haven alone accounted for roughly a quarter of the statewide entire increase.

Table 2 – The first-of-the-month totals

	2015 July 1	2015 Aug.1	2015 Sept. 1	2014 Sept. 1	% Change	
	Monthly	Monthly	Monthly	Monthly	Monthly	Annual
DOC Facilities						
Federal/Other	147	153	157	220	2.6%	-28.6%
Sentenced	12,166	12,171	12,064	12,364	-0.9%	-2.4%
Special Parole	562	567	544	430	-4.1%	26.5%
Pre-trial	3,150	3,265	3,403	3,563	4.2%	-4.5%
Total	16,025	16,156	16,168	16,577	0.1%	-2.5%
DOC Community						
Transfer Parole	0	0	0	0	-	-
Parole/ Parcom Total	938	940	958	946	1.9%	1.3%
Parole	768	768	786	785	2.3%	0.1%
Parcom @ CT	170	172	172	161	0.0%	6.8%
Furlough	31	34	37	9	-	-
Trans Placement	73	70	62	111	-11.4%	-44.1%
DUI/Home confine.	118	98	88	84	-10.2%	4.8%
Halfway House Total	967	963	982	940	2.0%	4.5%
Comm Release	618	613	603	706	-1.6%	-14.6%
TS	50	55	65	31	18.2%	109.7%
Parole	103	104	121	53	16.3%	128.3%
Transfer Parole	0	0	0	0	-	-
Special Parole	196	191	103	150	-46.1%	-31.3%
TS Total	531	517	505	624	-2.3%	-19.1%
Nursing home	7	8	8	8	-	-
Special Parole	1,290	1,301	1,318	1,209	1.3%	9.0%
Total	3,955	3,931	3,958	3,931	0.7%	0.7%

Table 3 – Admissions, releases & discharges*

	2015 June	2015 July	2015 August	2014 August	% Change	
	Monthly	Monthly	Monthly	Monthly	Monthly	Annual
Admissions						
Federal/Other	99	110	102	107	-7.3%	-4.7%
Remands	159	187	137	172	-26.7%	-20.3%
DUI	6	4	1	5	-	-
Parole	24	29	22	32	-24.1%	-31.3%
Trans Plac/Furlough	1	3	5	5	-	-
HWH	27	36	28	34	-22.2%	-17.6%
TS	40	50	38	40	-24.0%	-5.0%
Special Parole	61	65	43	56	-33.8%	-23.2%
New Sentence	307	306	248	260	-19.0%	-4.6%
VOP	92	106	85	69	-19.8%	23.2%
Pre-trial	1,404	1,611	1,570	1,611	-2.5%	-2.5%
Total	1,969	2,214	2,057	2,150	-7.1%	-4.3%

Releases and discharges						
Transfer Parole	0	0	0	0	-	-
Parole	117	100	116	80	16.0%	45.0%
Furlough	31	31	28	9	-9.7%	211.1%
Trans. Placement	23	20	13	30	-35.0%	-56.7%
Home Confinement DUI	53	29	27	20	-6.9%	35.0%
HWH	153	180	168	183	-6.7%	-8.2%
TS	221	194	174	162	-10.3%	7.4%
Special Parole	109	104	101	90	-2.9%	12.2%
Nursing home	0	1	0	1	-	-
End of Sentence	747	809	724	744	-10.5%	-2.7%
Total	1,454	1,468	1,351	1,319	-8.0%	2.4%

Pre-trial Releases*						
No return from Court	530	547	571	571	4.4%	0.0%
Release to Bond	378	425	404	500	-4.9%	-19.2%

* Totals reflect events, not individual offenders

Table 3a – Community Release Unit metrics

	Reviewed	Approved	Denied	Continued	Approval Rate
June	892	439	203	157	49%
July	829	381	152	136	46%
Aug.	770	402	134	97	52%

Board of Pardons & Paroles

Table 4 – Parole hearings, new cases

	Parole Hearings	Paroles granted	Grant rate	Paroles granted, 2014	Paroles granted, 2013
June	145	70	48%	98	133
July	153	84	55%	125	106
Aug.	196	123	63%	141	124

Table 4a – Other parole actions

	Reparole from revocation	Reparole from rescission	Closed interest cases	Special parole cases
June	46	5	20	53
July	46	8	56	41
Aug.	47	3	18	37

The pre-trial population

Table 5 – Bond ranges for pre-trial detainees

Bond amount	July 1, 2015	Aug. 1, 2015	Sept. 1, 2015	Sept. 1, 2014
Less than \$20K	558	651	624	687
\$20K to < \$50K	517	535	577	658
\$50K to < \$100K	721	724	710	729
\$100K or higher	1,458	1,460	1,444	1,511
Over \$1M	175	180	173	188
Offenders w/bonds	3,254	3,370	3,355	3,585

Table 5a – Pre-trial, weeks since admission

Weeks since last DOC admit	July 1, 2015	Aug. 1, 2015	Sept. 1, 2014	Sept. 1, 2014
< 1 week	469	511	461	511
1 to < 3 weeks	346	417	369	412
3 to < 10 weeks	882	877	961	1,005
10 to < 30 weeks	823	826	867	953
30 wks or more	735	742	704	707
Pre-trial prisoners	3,255	3,373	3,362	3,588

Table 5b – Pre-trial admits, new offenders

	May 2015	June 2015	July 2015	August 2015
Arraignments	2,903	2,966	3,294	3,069
Pre-trial Admits	1,397	1,404	1,611	1,570
New to DOC	357	353	415	409
% New	26%	25%	26%	26%

Court Support Services Division

Table 6 – The Jail Re-interview Program

	Pre-trial admissions	Offender interviews	Offenders released	Releases last year
June	1,404	1,751	778	841
July	1,611	1,893	873	837
August	1,570	1,953	887	834

Table 6a – Pre-Trial & split-sentence starts

	Pre-trial Bail Case Starts	Client Supv. Starts	Split Sentence Starts
June	2,419	2,090	400
July	2,518	2,297	431
Aug.	2,440	2,205	398

Note: Figures published here are based on operational data available at publication. Data in subsequent issues may not agree.

Chart 3 – Prison population

First week of the month, and ADC

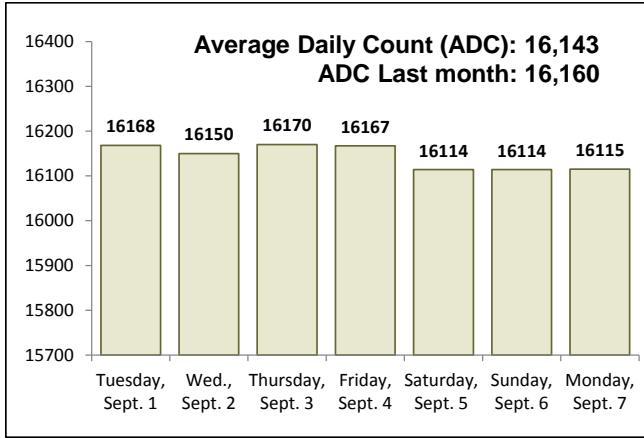


Chart 6 – Monthly DOC Admissions

June 2014 through August 2015

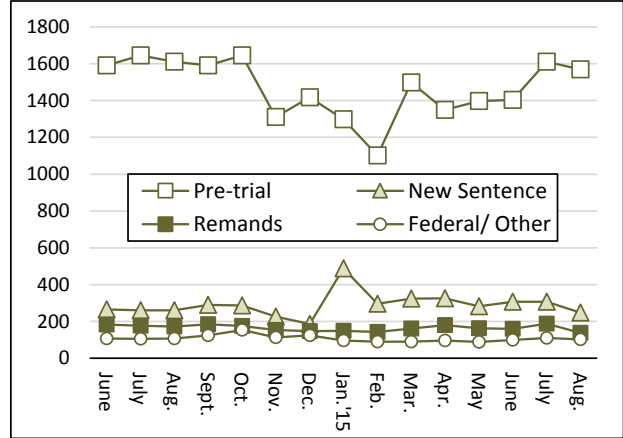


Chart 4 – Prison population, first-of-month

2013, 2014 and 2015

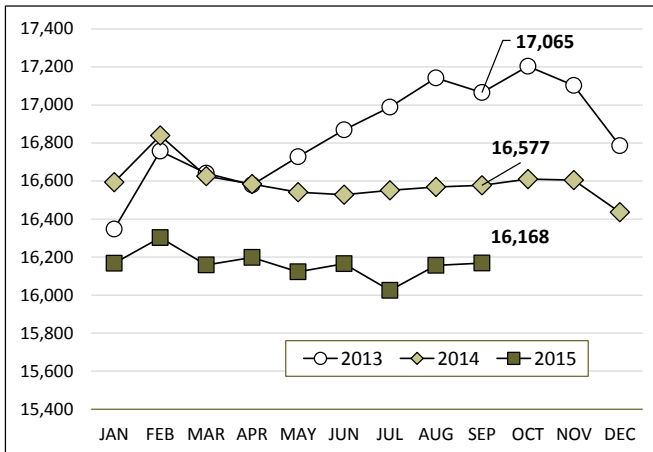


Chart 7 – Remands from community release

August 2015

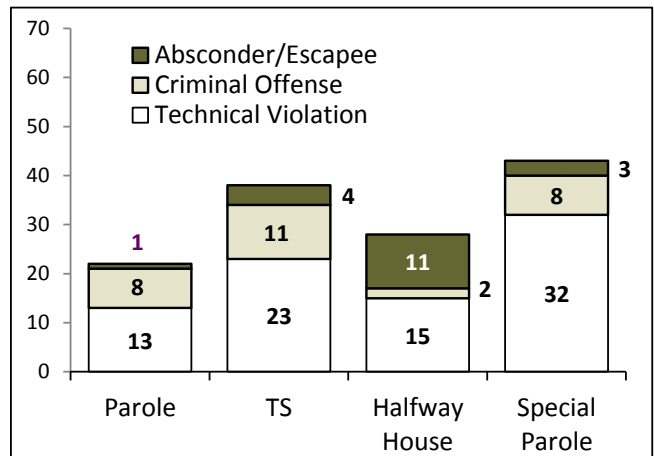


Chart 5 – Statewide criminal arrests

2014 and 2015

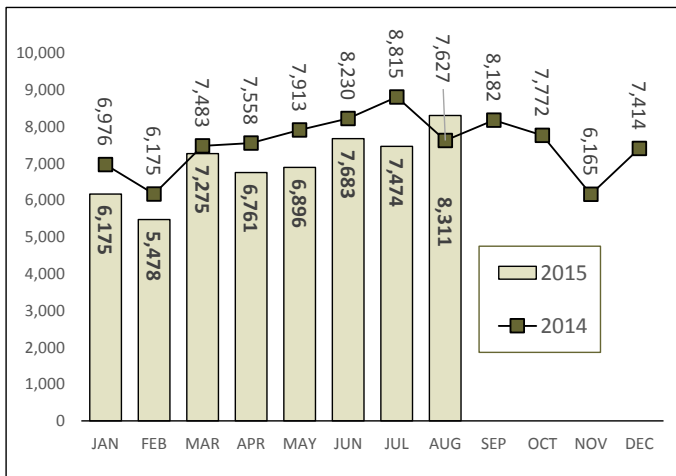
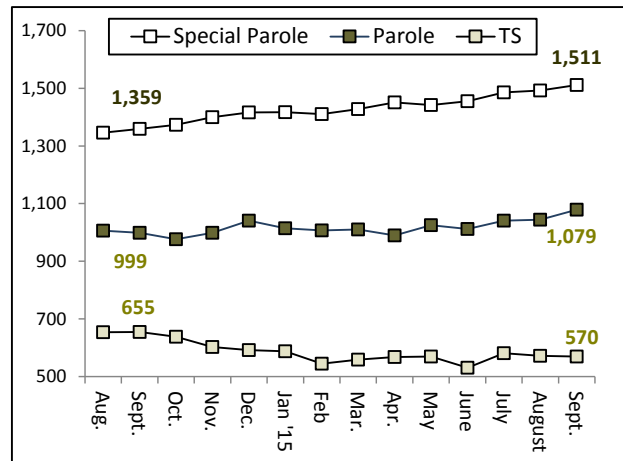


Chart 8 – DOC community supervision

August 1, 2014 through September 1, 2015



Note: Data for all charts, with the exception of Chart 5, was supplied by CT DOC. Data for Chart 5 is based on new case starts in the state Offender-Based Tracking System (OBTS). Chart 8 includes offenders in halfway houses.