

OPM - Criminal Justice Policy & Planning Division

Monthly Indicators Report

Highlights

- In June, the prison population grew by 119. On July 1st, 16,988 people were incarcerated. Last year, on the same date, there were 16,591 inmates in state prison facilities (see chart 4).
- As recently as a year ago, it would have been reasonable to project that the state's prison population could dip into the 15,000's within the next few years. Several years ago, very few people believed that the prison population would, or could, drop below 17,000. Given current trends, it is hard to visualize a scenario where the prison population would fall below 16,000 any time soon.
- Increases in the prison population are especially surprising given that the vast majority of sentenced offenders continue to earn five days off their sentences for each month they serve. Without these reductions, through RREC, the prison population would be significantly higher.
- Legislative changes (Public Act No. 13-3) will affect approximately 4,200 offenders who are currently eligible for parole after completing 85% of their sentences. These changes will almost certainly result in increased demand on the DOC's existing prison-bed capacity.
- The Board of Pardons and Parole has also been given added powers to close interest on parole cases. Although one is expected, it is not clear how much this change will impact the prisons.

Prison Population Forecast

The prison population continues to rise. During the first week of July, the number of people incarcerated in the state exceeded OPM's February 2013 estimate by 486.

The current increase in the prison population are not the product of increased crime or a spike in the number of arrests (see chart 5) or prison admissions. In fact, prison admissions are down this year compared to 2012, when the prison population fell from 17,090 to 16,586 between January and July (see chart 2a).

The state's prison-release system is complicated, confusing and difficult to manage (see chart 2). At the present time, sentenced offenders can leave prison through one of seven separate, discretionary release programs. The largest re-entry programs are parole, community release, and transitional supervision (TS). In addition, offenders are released through furloughs, transitional placement, transfer parole or DUI/home confinement. These seven programs are intended to accomplish two things 1) protect the public and 2) provide offenders with programming and an appropriate level of supervision as they reintegrate into society.

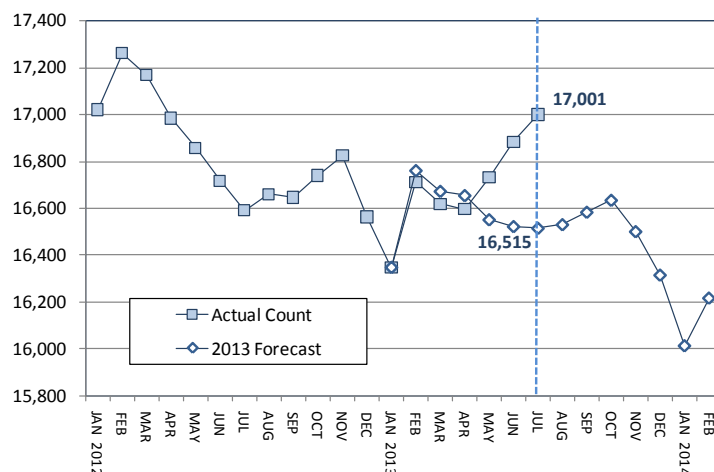
State criminal justice agencies are involved in on-going efforts to improve prisoner re-entry efforts.

TABLE 1 – Prison Population Forecast

	Avg. Daily Count, Actual	OPM 2012 Forecast	Diff. %
JAN 2013	16,347	16,347	-
FEB	16,712	16,763	0.3%
MAR	16,619	16,673	0.3%
APR	16,597	16,655	0.4%
MAY	16,731	16,551	-1.1%
JUN	16,884	16,522	-2.1%
JUL	17,001	16,515	-2.9%
AUG		16,530	-
SEP		16,584	-
OCT		16,635	-
NOV		16,500	-
DEC		16,314	-
JAN 2014		16,010	-
FEB		16,215	-

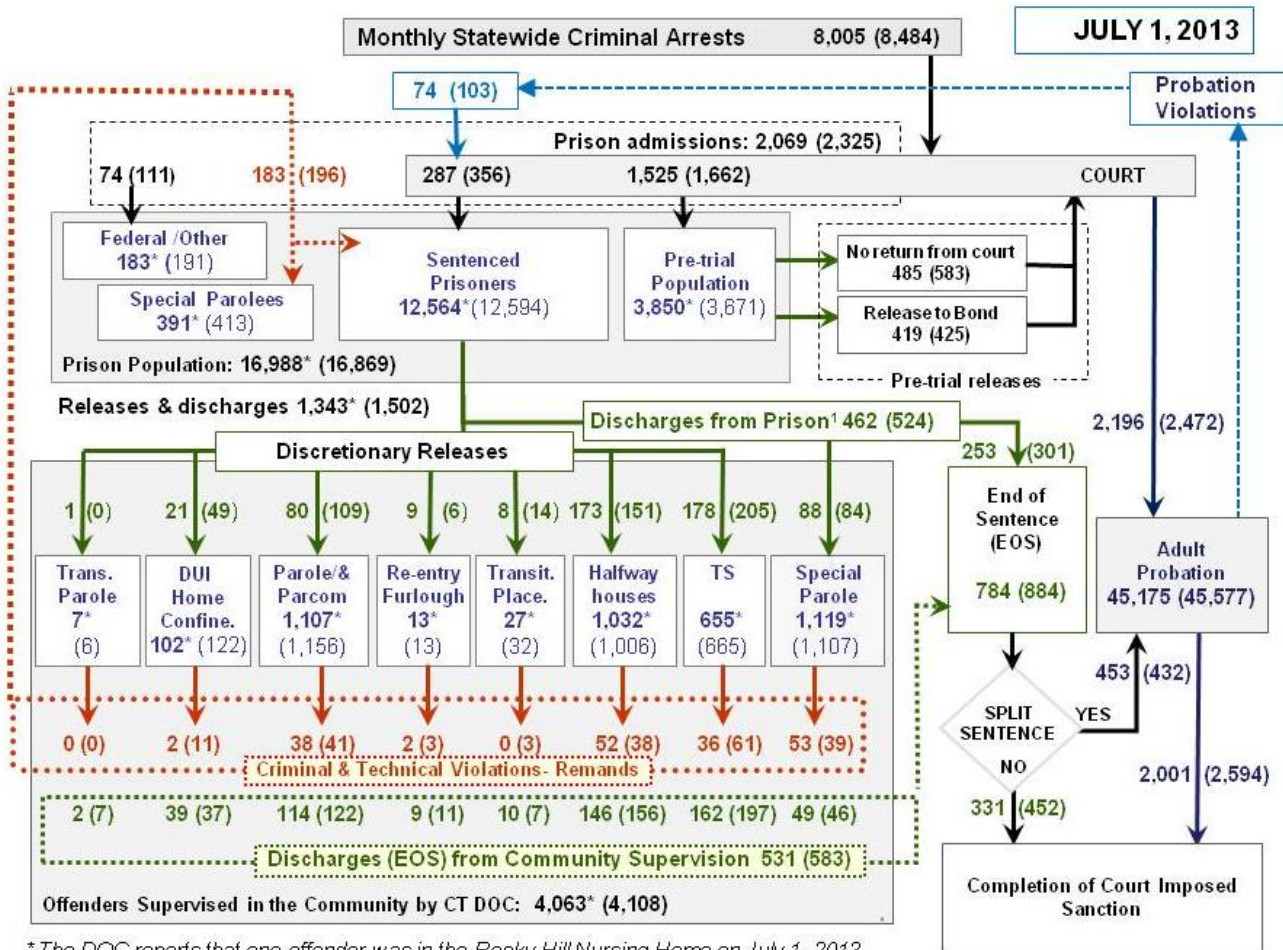
Avg. Daily Count (ADC) for first week of month

Chart 1 – Actual ADC of the prison population against the OPM forecast January 1, 2012 through February 1, 2014



Contact this paper at:
opm.mir@ct.gov

Chart 2 - Criminal justice, monthly flows



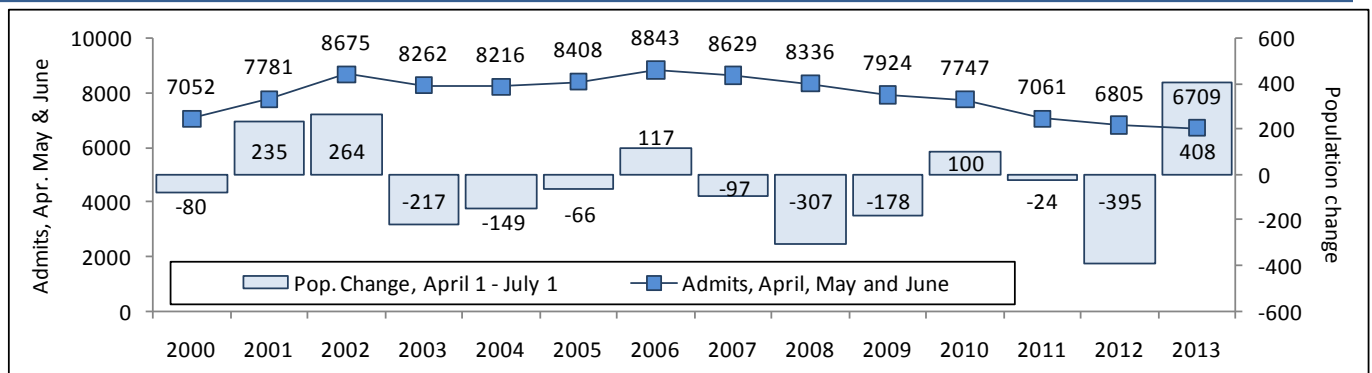
*The DOC reports that one offender was in the Rocky Hill Nursing Home on July 1, 2013.

This chart contains monthly operational data for June 2013 and daily counts reported on July 1, 2013. Asterisks (*) indicate the daily count on July 1st. Figures for the previous month are enclosed by parentheses.

¹DOC facility reports indicate that 462 sentenced offenders discharged (EOS) from DOC facilities during the month.

Sources of the data: Arrests - OBTS, Court and probation data - CSSD, all other data - CT DOC

Chart 2a – DOC admits and prison population growth, April 1 through July 1



The prison population grew by 408 offenders between April 1 and July 1, growth that is atypical for this time of the year. The prison system has expanded only three times in the last eleven years during these months. In both 2006 and 2010, the increases in population were much smaller than we are currently witnessing.

The recent increase in the prison population has not been accompanied by an increase in prison admissions. Admissions – which include all pre-trial admits, sentenced admissions, remands and admissions from federal agencies (see chart 2) - have been declining steadily since 2006.

Table 2 – The first-of-month population count

	2013	2013	2013	2012	% Change	
	May 1	June 1	July 1	July 1	Monthly	Annual
DOC Facilities						
Federal/Other	190	191	183	136	-4.2%	34.6%
Sentenced	12,490	12,594	12,564	12,483	-0.2%	0.6%
Special Parole	431	413	391	344	-5.3%	13.7%
Pre-trial	3,617	3,671	3,850	3,628	4.9%	6.1%
Total	16,728	16,869	16,988	16,591	0.7%	2.4%
DOC Community						
Transfer Parole	7	6	7	6	-	-
Parole/ Parcom Total	1,191	1,156	1,107	1,336	-4.2%	-17.1%
Parole	1,026	992	940	1,166	-5.2%	-19.4%
Parcom @ CT	165	164	167	170	1.8%	-1.8%
Furlough	25	13	13	29	0.0%	-55.2%
Trans Placement	28	32	27	22	-15.6%	22.7%
DUI/Home confine.	121	122	102	119	-16.4%	-14.3%
Halfway House Total	991	1,006	1,032	1,017	2.6%	1.5%
Comm Release	770	753	771	828	2.4%	-6.9%
TS	12	12	15	10	25.0%	50.0%
Parole	76	87	84	70	-3.4%	20.0%
Transfer Parole	0	0	0	0	-	-
Special Parole	133	154	162	109	5.2%	48.6%
TS Total	706	665	655	785	-1.5%	-16.6%
Nursing home	0	1	1	0	-	-
Special Parole	1,113	1,107	1,119	1,130	1.1%	-1.0%
Total	4,182	4,107	4,063	4,444	-1.1%	-8.6%

Table 3 – Monthly admissions, releases and discharges*

	2013	2013	2013	2012	% Change	
	Apr.	May	June	June	Monthly	Annual
Admissions						
Federal/Other	107	111	74	79	-33.3%	-6.3%
Returns	216	196	183	187	-6.6%	-2.1%
Trans.Parole / DUI	3	11	2	5	-	-
Parole	52	41	38	35	-7.3%	8.6%
Trans Plac/Furlough	0	6	2	2	-	-
HWH	45	38	52	39	36.8%	33.3%
TS	60	61	36	59	-41.0%	-39.0%
Special Parole	56	39	53	47	35.9%	12.8%
New Sentence	322	356	287	320	-19.4%	-10.3%
VOP	92	103	74	69	-28.2%	7.2%
Pre-trial	1,670	1,662	1,525	1,676	-8.2%	-9.0%
Total	2,315	2,325	2,069	2,262	-11.0%	-8.5%
Releases						
Transfer Parole	1	0	1	2	-	-
Parole	108	109	80	174	-26.6%	-54.0%
Furlough	22	6	9	28	50.0%	-67.9%
Transfer Placement	10	14	8	10	-42.9%	-20.0%
Home Confinement DUI	44	49	21	61	-57.1%	-65.6%
HWH	171	151	173	164	14.6%	5.5%
TS	226	205	178	286	-13.2%	-37.8%
Special Parole	75	84	88	84	4.8%	4.8%
Nursing home	0	0	1	0	-	-
End of Sentence	782	884	784	978	-11.3%	-19.8%
Total	1,439	1,502	1,343	1,787	-10.6%	-24.8%
Pre-trial Releases*						
Did not return from Court	597	583	485	581	-16.8%	-16.5%
Release to Bond	437	425	419	483	-1.4%	-13.3%

* Totals reflect events not individuals.

Board of Pardons and Paroles

Table 4a – Inmates with sentences greater than 24 months

	Parole eligible	Not eligible
May	8,383	853
June	8,440	860
July	8,465	861

Table 4b – Parole hearings

	Hearings	Granted	Rate
Apr.	171	113	66%
May	186	149	80%
June	166	133	80%

Pre-trial detainees

Table 5 – Bond ranges, pre-trial prisoners

Bond amount	May 1, 2013	June 1, 2013	July 1, 2013
Less than \$20K	16.5%	15.5%	16.9%
\$20K to < \$50K	16.5%	17.9%	17.3%
\$50K to < \$100K	20.5%	21.0%	20.9%
\$100K or higher	46.4%	45.6%	44.9%
Over \$1M	6.3%	6.1%	5.7%

Table 5a – Pre-trial inmates, length-of-stay

Weeks since last DOC admit	May 1, 2013	June 1, 2013	July 1, 2013
< 1 week	14.0%	13.6%	13.8%
1 to < 3 weeks	11.6%	11.4%	11.8%
3 to < 10 weeks	24.7%	27.2%	27.1%
10 to < 30 weeks	27.8%	25.6%	27.2%
30 wks or more	22.0%	22.1%	20.0%
	100%	100%	100%

Court Support Services Division

Table 6 – The Jail Re-interview Program

	Offenders interviewed	Offenders released	Releases last year
Apr.	1,655	970	660
May	1,839	942	733
June	1,641	848	751

Table 7 – Pre-Trial & split-sentence starts

	Pre-trial Bail Case Starts	Client Supv. Starts	Split Sentence Starts
Apr.	2,612	2,441	381
May	2,488	2,472	432
June	2,440	2,196	453

DUI – Home confinement

Table 8 – Releases, count and discharges

	Monthly releases to	On home confinement, 1st of month	Monthly discharges from
May	49	121	37
June	21	122	39
July	-	102	-

Note: Figures published here are based on operational data available at the time of publication. Data in subsequent issues may not agree.

Chart 3 – Prison Population
July 1, 2013 to July 7, 2013

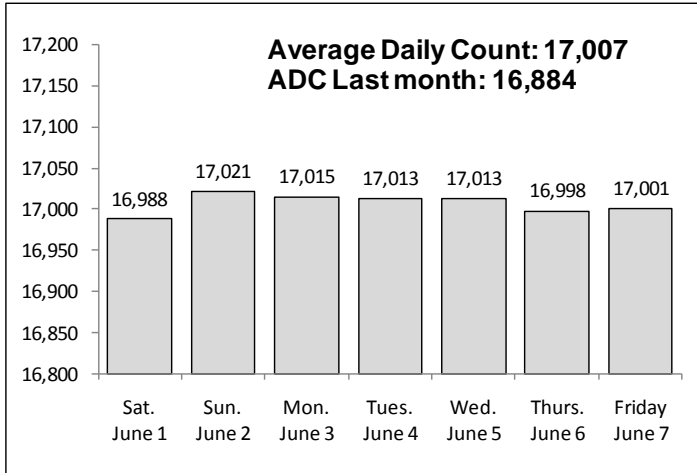


Chart 6 – Monthly DOC Admissions
May 2012 through June 2013

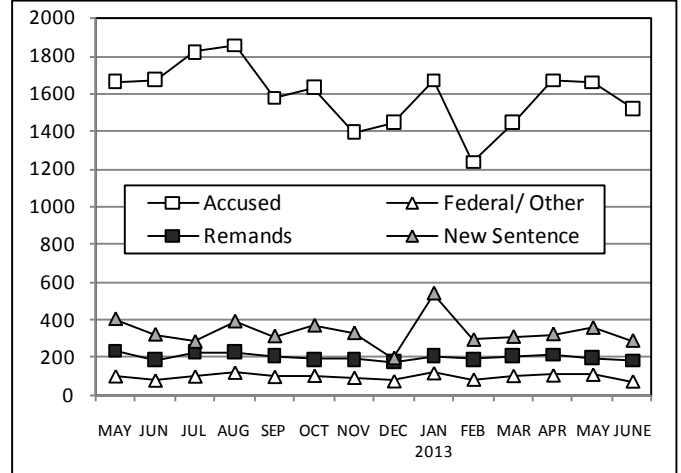


Chart 4 – Prison Population, first-of-month
2011 through 2013

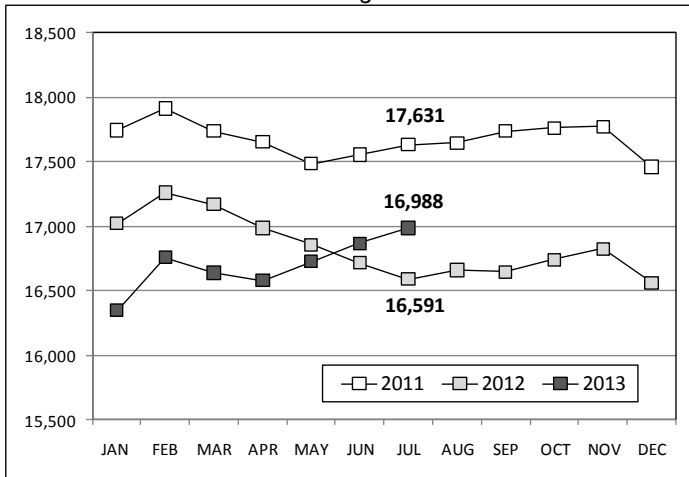


Chart 7 – Remands from Community Release
June 2013

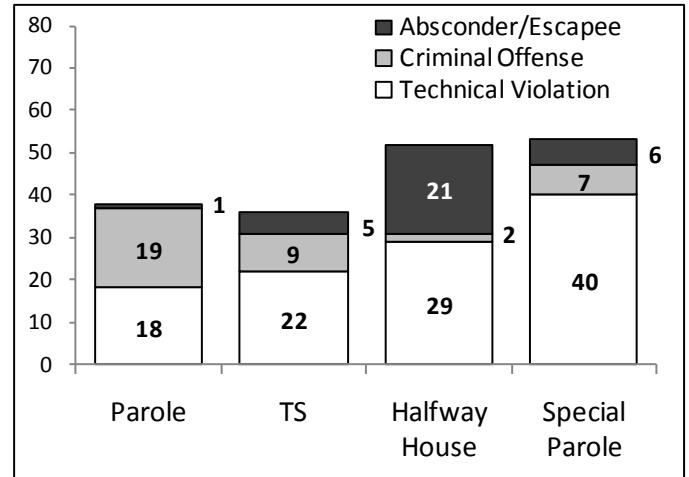


Chart 5 – Monthly Statewide Criminal Arrests
2012 versus 2013

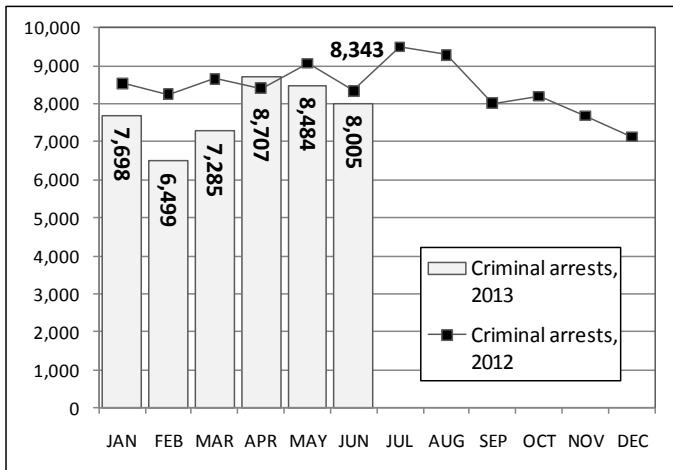
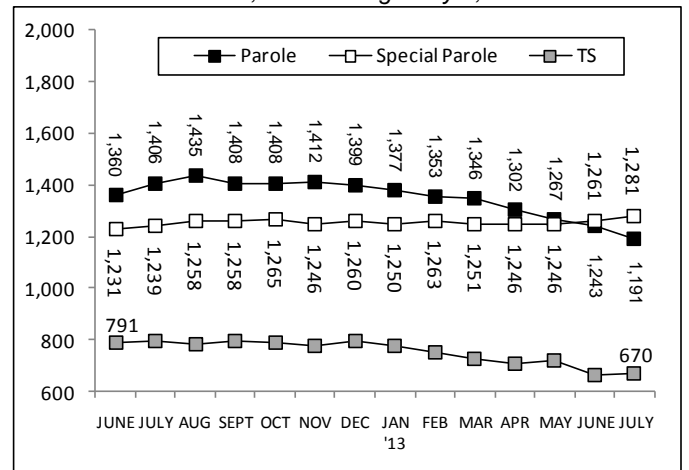


Chart 8 – Parole, TS and Special Parole, supervised cases
June 1, 2012 through July 1, 2013



Note: Data for all charts, with the exception of Chart 5, was supplied by CT DOC. Data for Chart 5 is based on new case starts in the state Offender-Based Tracking System (OBTS).