

OPM - Criminal Justice Policy & Planning Division Monthly Indicators Report



Highlights

- 16,646 people were incarcerated in state prison facilities at the start of the month. September marks the second month in which the prison population has increased. The last time it grew in two consecutive months was in September and October 2011.
- During August, 550 offenders discharged from prison. Of these, 462 were discharged with at least one day of Risk Reduction Earned Credit (RREC). The average offender received 49.3 days off their sentence. Last August, 535 offenders discharged from prison.
- 412 offenders, who had already been released to a community supervision program, also received RREC last month. Among this group, the average offender earned 89.5 days of credit.
- The RREC program has contributed, along with the DUI home confinement program, to the decline in the recent sentenced prison population. RREC did so by reducing the mean-length-of-incarceration for thousands of inmates. RREC did not, however, significantly increase the number of prisoners released or discharged from prison compared to releases in recent years (see Chart 2A).
- The average number of offenders sentenced to prison had declined considerably in recent years (see Chart 2A).

The Monthly Indicators Report has an email address. Please direct any comments, questions or suggestions to:
opm.mir@ct.gov

Prison Population Forecast

Contraction of the state's prison population appears to have stalled in July and August at around 16,600. Even with a small uptick in the prison population during the last two months, the number of inmates is 3.4% lower than OPM estimated in February.

The size of the prison population is mainly dependent on three factors 1) the number of offenders admitted during a given period of time 2) the number of offenders released or discharged during the same period, and 3) the mean length of incarceration for the entire inmate population.

The first two factors – admits and releases – are easy to model. In contrast, the third factor, the mean length of incarceration, is currently very difficult to quantify. In fact, the current difficulties in calculating the mean length of stay for the prison population, in a manner that would allow planners and administrators to produce accurate projections of future prison occupancy, is a major reason why OPM's prison projection has veered off, as it has, over the last eight months. OPM is currently working with staff at the MIS unit of DOC to develop mean-lengths of stay on an on-going basis.

TABLE 1 –Prison Population Forecast

	Actual (*Avg Daily Count)	OPM 2011 Forecast	Diff. %
FEB '12	17,224*	17,224	
MAR	17,117*	17,171	-0.3%
APR	16,973*	17,172	-1.2%
MAY	16,829*	17,100	-1.6%
JUN	16,698*	17,143	-2.6%
JUL	16,586*	17,213	-3.6%
AUG	16,603*	17,238	-3.7%
SEP	16,677*	17,263	-3.4%
OCT	-	17,238	
NOV	-	17,121	
DEC	-	17,013	
JAN '13	-	16,587	
FEB	-	16,756	

* Average Daily Count, first week of month

CHART 1 – Actual ADC of the prison population against the OPM forecast
January 1, 2011 through February 1, 2013

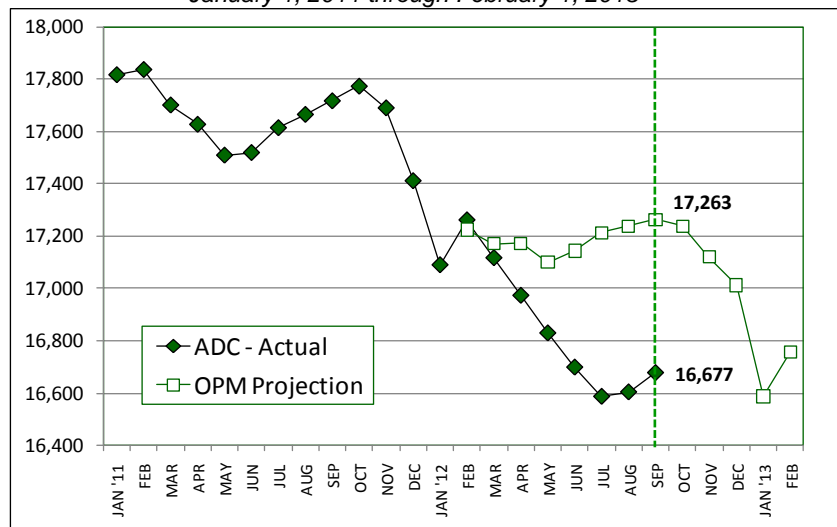
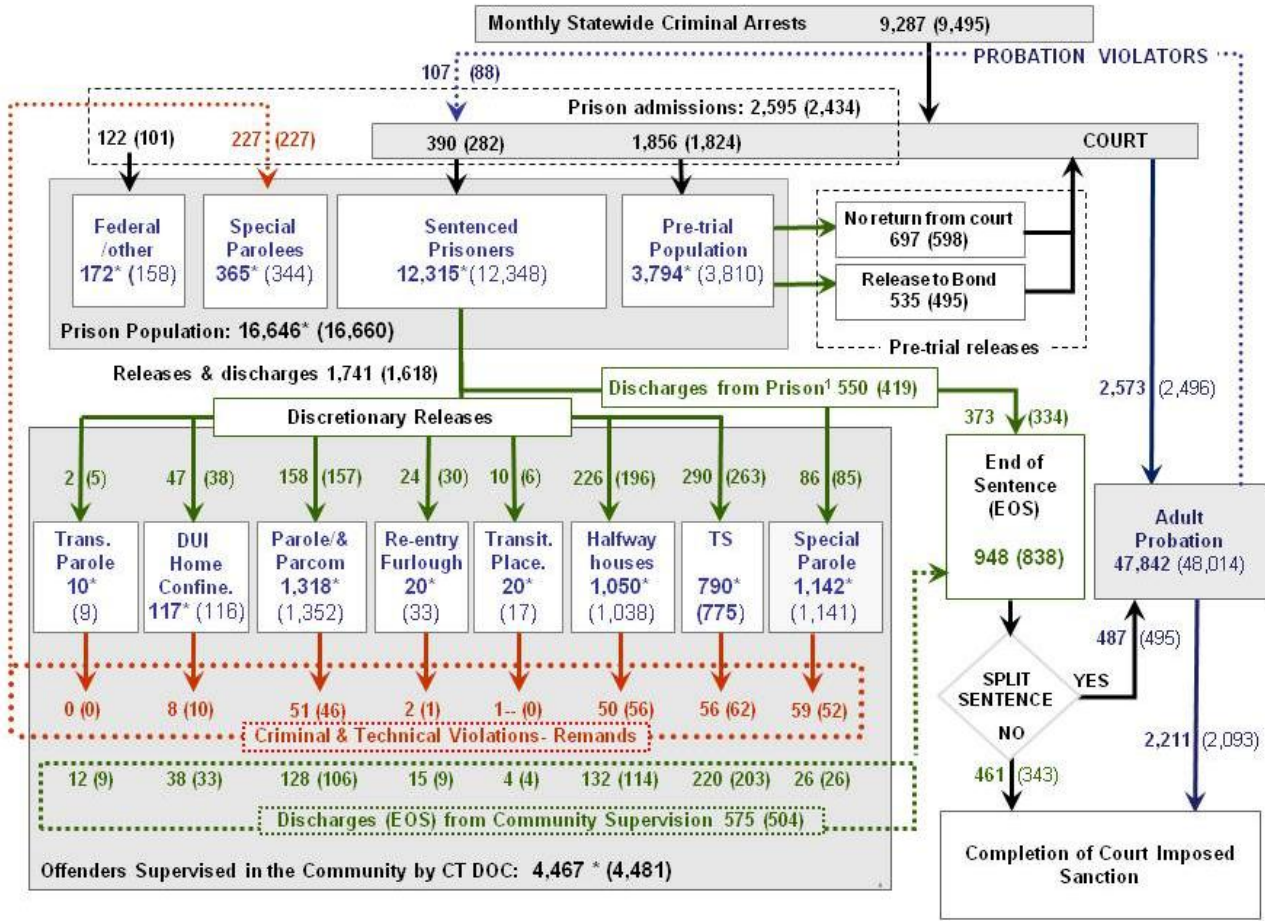


CHART 2 – Connecticut Criminal Justice System – Monthly Overview



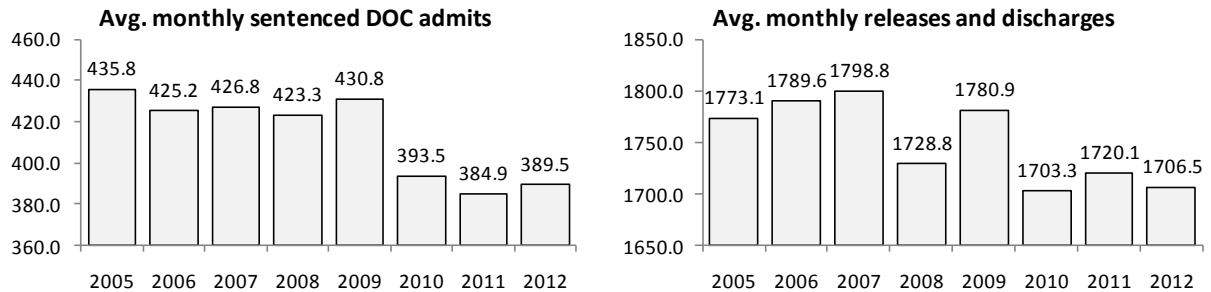
This chart contains monthly operational data for August 2012 and daily counts reported on September 1, 2012.

Asterisks (*) indicate September 1 figures. Numbers enclosed by parenthesis are for the previous month.

¹ The DOC reports that 550 offenders discharged (EOS) from DOC facilities during August.

Data sources include: Arrests-OBTS, Court and probation data: CSSD, all other data CT DOC

CHART 2A – Average monthly admissions, releases and discharges, 2005 - 2012



2012 averages were computed for the months of January through August.

CHART 2B – Monthly criminal arrests, Public Defender cases opened, and pre-trial prison admits

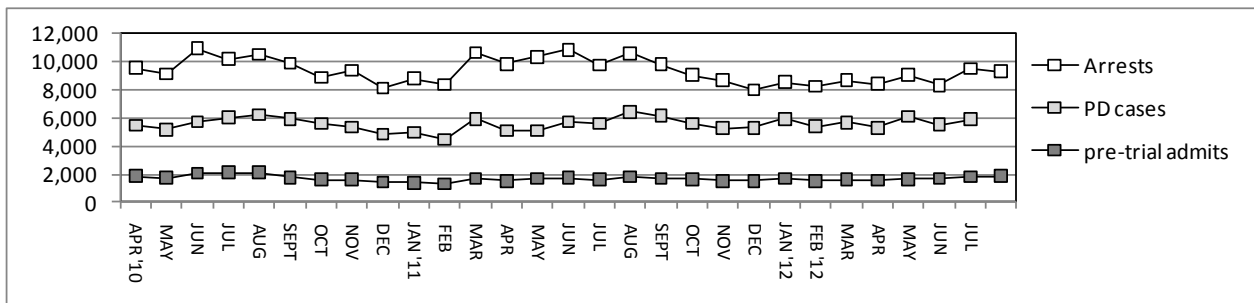


TABLE 2 – DOC Population Counts, First of the Month

	2012	2012	2012	2011	% Change	
	July 1	Aug. 1	Sept. 1	Sept. 1	Monthly	Annual
DOC Facilities						
Federal/Other	136	158	172	136	8.9%	26.5%
Sentenced	12,483	12,348	12,315	13,482	-0.3%	-8.7%
Special Parole	344	344	365	322	6.1%	13.4%
Pre-trial	3,628	3,810	3,794	3,799	-0.4%	-0.1%
Total	16,591	16,660	16,646	17,739	-0.1%	-6.2%
DOC Community						
Transfer Parole	6	9	10	26	11.1%	-61.5%
Parole/ Parcom Total	1,336	1,352	1,318	1,756	-2.5%	-24.9%
Parole	1,166	1,181	1,152	1,579	-2.5%	-27.0%
Parcom @ CT	170	171	166	177	-2.9%	-6.2%
Furlough	29	33	20	11	-39.4%	81.8%
Trans Placement	22	17	20	11	17.6%	81.8%
Home confinement/DUI	119	116	117	0	0.9%	-
Halfway House Total	1,017	1,038	1,050	1,124	1.2%	-6.6%
Comm Release	828	831	855	908	2.9%	-5.8%
TS	10	7	9	19	28.6%	-52.6%
Parole	70	83	80	105	-3.6%	-23.8%
Transfer Parole	0	0	0	1	-	-
Special Parole	109	117	106	91	-9.4%	16.5%
TS Total	785	775	790	948	1.9%	-16.7%
Special Parole	1,130	1,141	1,142	958	0.1%	19.2%
Total	4,444	4,481	4,467	4,834	-0.3%	-7.6%

TABLE 3 – DOC Admissions and Releases, Monthly Totals*

	2012	2012	2012	2011	% Change	
	June	July	Aug.	Aug.	Monthly	Annual
Admissions						
Federal/Other	79	101	122	104	20.8%	17.3%
Returns	187	227	227	248	0.0%	-8.5%
Transfer Parole	5	10	8	1	-	-
Parole	35	46	51	73	10.9%	-30.1%
Trans Plac/Furlough	2	1	3	3	-	-
HWH	39	56	50	49	-10.7%	2.0%
TS	59	62	56	72	-9.7%	-22.2%
Special Parole	47	52	59	50	13.5%	18.0%
New Sentence	320	282	390	313	38.3%	24.6%
VOP	69	88	107	89	21.6%	20.2%
Pre-trial	1,676	1,824	1,856	1828	1.8%	1.5%
Total	2,262	2,434	2,595	2,493	6.6%	4.1%
Releases						
Transfer Parole	2	5	2	17	-	-88.2%
Parole	174	157	158	176	0.6%	-10.2%
Furlough	28	30	24	12	-20.0%	100.0%
Transfer Placement	10	6	10	10	66.7%	0.0%
Home Confinement DUI	61	38	47	0	23.7%	-
HWH	164	196	226	208	15.3%	8.7%
TS	286	263	290	256	10.3%	13.3%
Special Parole	84	85	86	79	1.2%	8.9%
End of Sentence	978	838	948	864	13.1%	9.7%
Total	1,787	1,618	1,791	1,622	10.7%	10.4%
Pre-trial Releases*						
Did not return from Court	581	598	697	548	16.6%	27.2%
Release to Bond	483	495	535	528	8.1%	1.3%

*Monthly totals count occurrences, not individuals.

Board of Pardons and Parole

TABLE 4 – Inmates with sentences greater than 24 months

	Parole eligible	Not eligible
JULY	8,384	838
AUG	8,338	840
SEPT	8,326	841

TABLE 4A – Parole hearings

	Hearings	Granted	Rate
JUNE	191	155	81%
JULY	197	149	76%
AUG	211	151	72%

TABLE 4B – Other Parole Hearings

	Revocations		Rescissions	
	Reparoled	Denied	Reparoled	Denied
JUN	37	20	14	11
JUL	41	21	9	9
AUG	63	33	23	14

Public Defender Services

TABLE 5 – Public Defender Cases

	Cases appointed		Cases disposed	
	GA	JD	GA	JD
MAY	6,112	322	4,556	183
JUN	5,509	206	3,842	133
JUL	5,900	234	3,810	129

CSSD – Adult Probation

TABLE 6 – Pre-trial and split sentence starts

	Pre-trial Bail Case Starts	Client Supv. Starts	Split Sentence Starts
	JUN	2,464	2,269
JULY	2,485	2,496	495
AUG	2,660	2,573	487

Pre-trial Diversion and Supervision

TABLE 7 – The Jail Re-interview Program

	Offenders interviewed	Offenders released	Releases last year
JUNE	1,240	751	725
JULY	1,284	709	713
AUG	1315	817	716

Data Notes: Figures are based on operational data available at the time of this report. Data in subsequent issues may not agree.

DUI home confinement

TABLE 8 – Releases and discharges

	Monthly releases to...	On home confinement, 1st of month	Monthly discharges from ...
FEB	2	-	-
MAR	26	2	1
APR	55	31	3
MAY	52	81	25
JUN	61	103	39
JUL	38	119	33
AUG	47	116	38
SEP	-	117	-

Source: CT DOC

CHART 3 – Prison Population
August 1, 2012 to August 7, 2012

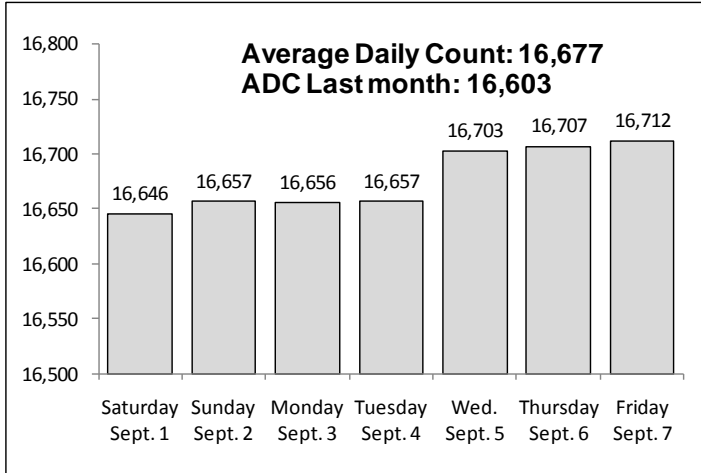


CHART 6 – Monthly DOC Admissions by Type
July 2011 through August 2012

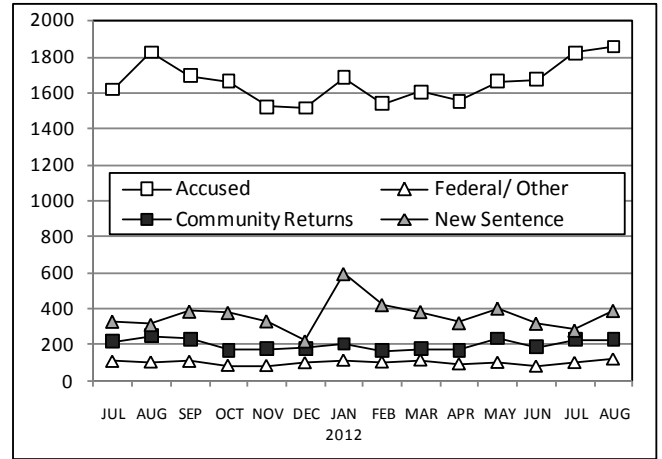


CHART 4 – Prison Population, first-of-month
January 1 through December 1

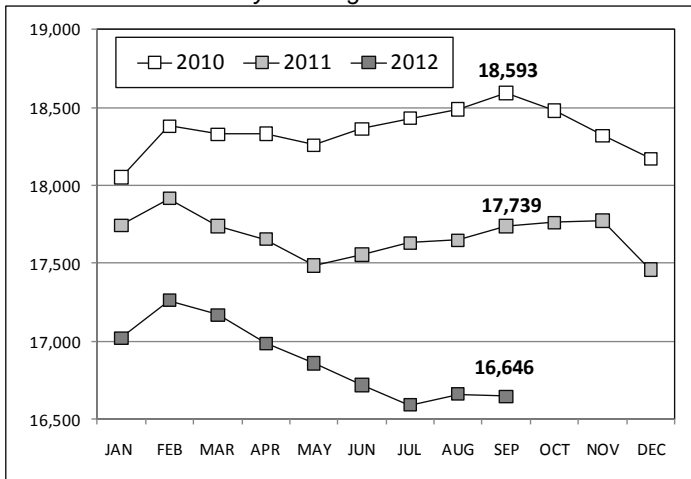


CHART 7 – Readmissions from Community Release
August 2012

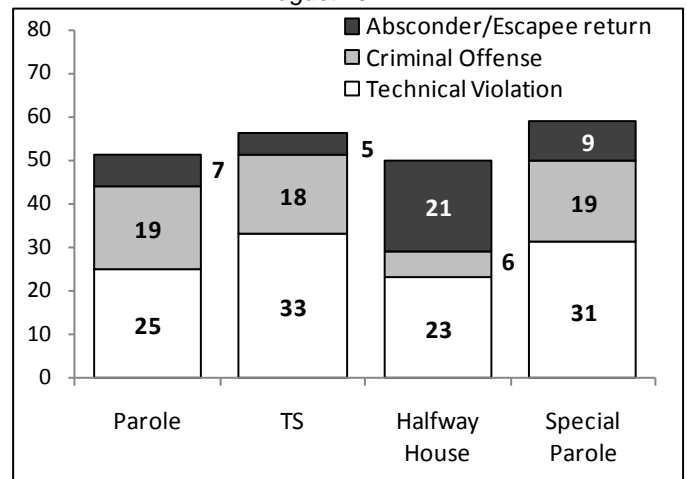


CHART 5 – Monthly Statewide Criminal Arrests
2011 versus 2012

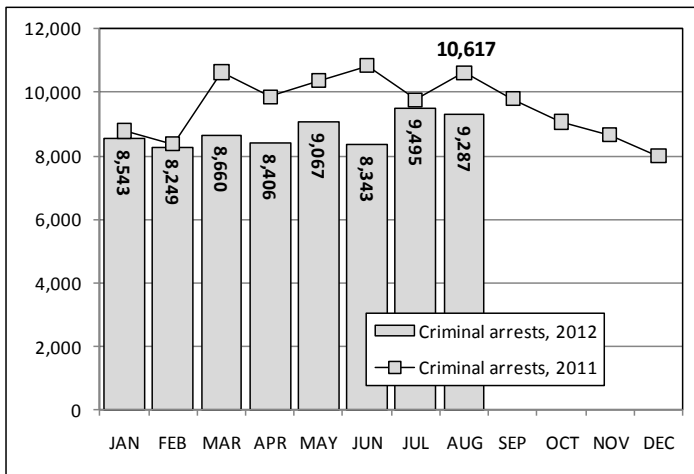
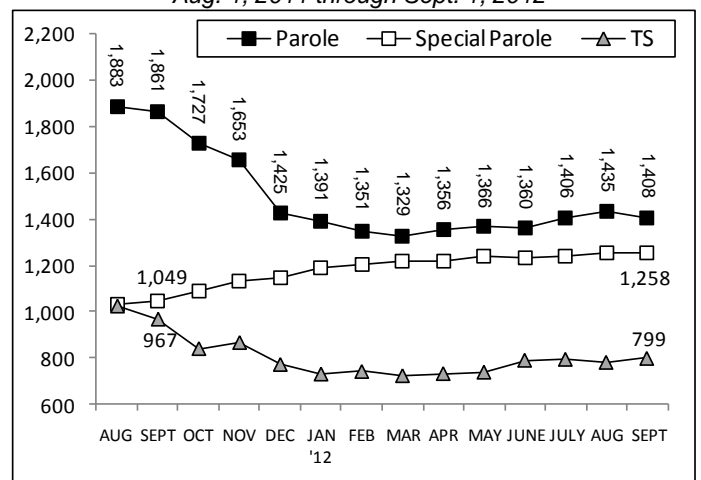


CHART 8 – Parole, TS and Special Parole, supervised cases
Aug. 1, 2011 through Sept. 1, 2012



Note: Data for all charts, with the exception of Chart 5, was supplied by CT DOC. Data for Chart 5 is based on new case starts in the state Offender-Based Tracking System (OBTS).