

OPM - Criminal Justice Policy & Planning Division

Monthly Indicators Report



Published by the Connecticut Statistical Analysis Center at the Connecticut Office of Policy & Management

Highlights

- On May 1, 16,858 people were incarcerated in state prison facilities. A year earlier, 17,486 offenders were incarcerated (see chart 4). Compared to May 2011, the pre-trial population was up by 284 inmates; the sentenced population was down by 920.
- In March, 897 offenders ended their prison sentences early due to the Risk Reduction Earned Credit (RREC) program. In April that figure dropped to 776. Most offenders (437), who completed their sentences early in April, discharged from prison facilities. The remaining 339 offenders discharged from community supervision. The average offender discharging from prison earned 45.8 days of credit. For offenders discharging from community supervision, the average was 89.9 days.
- The home confinement program for DUI and drug offenders continued to ramp up over the past month. On April 1, 31 offenders were on home confinement. By May 1st that number had jumped to 81 (see table 2).

OPM is currently working towards a revision to page 2. Chart 2 will be replaced by two charts that will contain the much of the same information in a more reader-friendly form.

OPM had secured a new source for monthly criminal arrest data. The arrest count will be extracted from the state's Offender Based Tracking System (OBTS). In the past, the information was provided by Court Operations.

Prison Population Forecast

The prison population continues to shrink at a faster rate than OPM had projected in February 2012. The Average Daily Count for the first week in May was 271 offenders less than forecast.

Between October 1, 2011 and May 1, 2012, the inmate count declined by 906, or 5.1%. Over the last 20 years, the number of inmates shed in the same period was only surpassed decline once. The prison population between October 2010 and May 2011, declined by 995, or 5.4%.

Although the prisoner population decline was similar between Oct. to May in both 2010-2011 and 2011-2012, the causes were markedly different. In 2010-2011, most of the drop in the prison population resulted from decreases in the size of the pre-trial prison population. In fact, in 2010-2011, pre-trial detainees accounted for 80% of the entire drop in the prison population. This year, the Risk Reduction Earned Credit Program (RREC) moved prison-release dates up for thousands of prisoners, essentially accomplishing a year's worth of releases into eight months. In the two months, over 80 prisoners also left prison because of the Home Confinement Program.

TABLE 1 –Prison Population Forecast

	Actual (*Avg Daily Count)	OPM 2011 Forecast	Diff. %
FEB '12	17,224*	17,224	
MAR	17,117*	17,171	-0.3%
APR	16,973*	17,172	-1.2%
MAY	16,829*	17,100	-1.6%
JUN	-	17,143	
JUL	-	17,213	
AUG	-	17,238	
SEP	-	17,263	
OCT	-	17,238	
NOV	-	17,121	
DEC	-	17,013	
JAN '13	-	16,587	
FEB	-	16,756	

* Average Daily Count, first week of month

CHART 1 – Average Daily Inmate Count for the First Week of the Month
January 1, 2010 through February 1, 2012

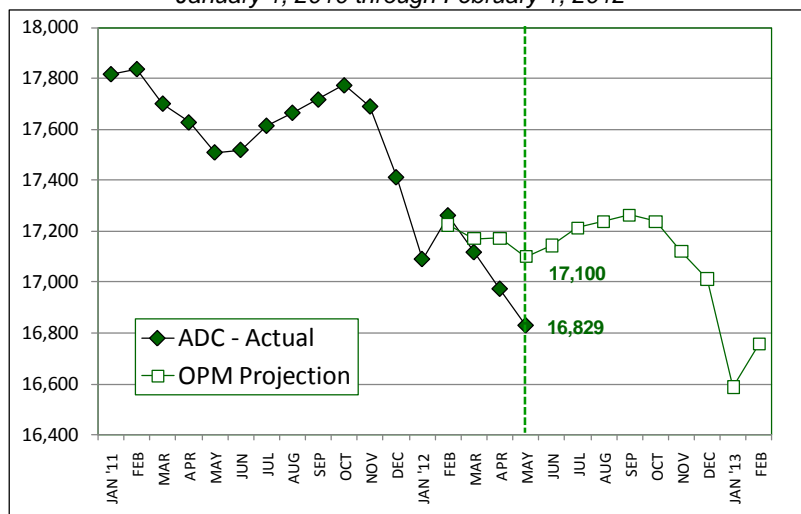
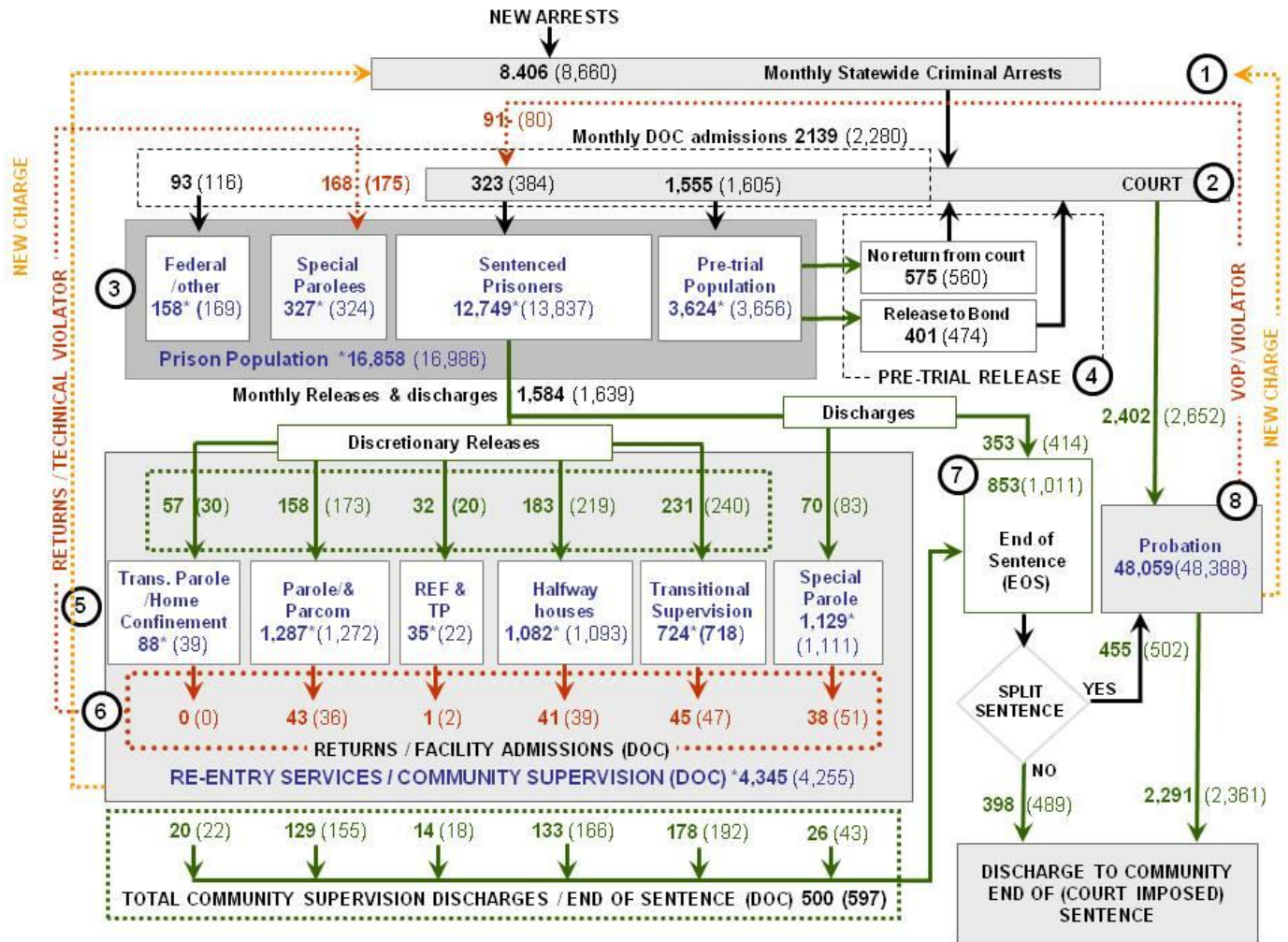


CHART 2 – Connecticut Criminal Justice System – Monthly Overview



Asterisks (*) indicate the population count on May 1, 2012. Figures enclosed by parenthesis are for the previous month. Other figures are monthly admit, release and caseload totals. Sources: Arrests-OBTS, Court and probation data: CSSD, other data DOC, MIS

Unlike states that have county governments, the majority of agencies within Connecticut's criminal justice system are State agencies. The one exception is law enforcement, where there are over 90 local police departments and the Connecticut State Police.

- 1) Arrest:** An individual enters into the criminal justice system at the time of arrest.
- 2) Court:** At arraignment, judges review the charges filed against the accused and set a bail amount. Individuals who cannot meet bail conditions are incarcerated in DOC facilities to await trial. If the defendant is convicted, they may be sentenced to a range of sanctions including a fine, probation, or a term of incarceration.
- 3) DOC Facilities:** Total facility population at DOC contains the unsentenced population, which is awaiting trial, the sentenced population, inmates who have returned from special parole, and offenders charged in federal cases or non-state cases.
- 4) Pre-Trial Release:** Some defendants who are incarcerated pending the disposition of their cases may be eligible for a bond reduction or placement into pre-trial diversionary programs or treatment programs. These programs feature close coordination and cooperation between DOC, CSSD and the Department of Mental Health and Addiction Services (DMHAS).
- 5) Re-Entry Services:** Depending on several factors, an inmate may be eligible to complete a portion of his/her prison sentence under supervision of the DOC's Parole and Community Services Unit. Non-violent Inmates with sentences shorter than two years are eligible for Transitional Supervision after serving 50% of their sentences. Inmates serving sentences longer than two years may be eligible for parole.
- 6) Returns:** Offenders who violate the conditions of their community release may be returned to prison to complete the remainder of their sentences.
- 7) End of Sentence (EOS):** At the end of their sentences some offenders are required to complete a period of post-release supervision. Split-sentence offenders are supervised by the Judicial Branch's Office of Adult Probation. Offenders sentenced to special parole remain under DOC supervision.
- 8) Violation of Probation:** If an individual violates the terms of their probation, an arrest warrant must be issued, and the violator's case is returned to court.

TABLE 2 – DOC Population Counts, First of the Month

	2011	2011	2012	2011	% Change	
	Mar. 1st	Apr. 1st	May 1st	May 1st	Monthly	Annual
DOC Facility						
Federal/Other	172	169	158	149	-6.5%	6.0%
Sentenced	13,051	12,837	12,749	13,669	-0.7%	-6.7%
Special Parole	313	324	327	292	0.9%	12.0%
Pre-trial	3,633	3,656	3,624	3,376	-0.9%	7.3%
Total	17,169	16,986	16,858	17,486	-0.8%	-3.6%
DOC Community						
Transfer Parole	8	8	7	29	-12.5%	-
Parole/ Parcom Total	1,237	1,272	1,287	1,763	1.2%	-27.0%
Parole	1,069	1,098	1,114	1,592	1.5%	-30.0%
Parcom @ CT	168	174	173	171	-0.6%	1.2%
Furlough	17	13	24	5	84.6%	380.0%
Trans Placement	13	9	11	16	22.2%	-31.3%
Home confinement/DUI	2	31	81	0	-	-
Halfway House Total	1,101	1,093	1,082	1,077	-1.0%	0.5%
Comm Release	868	883	875	859	-0.9%	1.9%
TS	15	16	16	16	0.0%	0.0%
Parole	92	84	79	90	-6.0%	-12.2%
Transfer Parole	0	1	0	3	-	-100.0%
Special Parole	124	109	112	109	2.8%	2.8%
TS Total	710	718	724	1,006	0.8%	-28.0%
Special Parole	1,092	1,111	1,129	915	1.6%	23.4%
Total	4,180	4,255	4,345	4,811	2.1%	-9.7%

TABLE 3 – DOC Admissions and Releases, Monthly Totals*

	2011	2011	2012	2011	% Change	
	Feb	Mar.	Apr.	Apr.	Monthly	Annual
Admissions						
Federal/Other	104	116	93	115	-19.8%	-19.1%
Returns	165	175	168	193	-4.0%	-13.0%
Transfer Parole	0	0	0	0	-	-
Parole	27	36	43	60	19.4%	-28.3%
Trans Plac/Furlough	0	2	1	2	-	-
HWH	31	39	41	37	5.1%	10.8%
TS	46	47	45	57	-4.3%	-21.1%
Special Parole	61	51	38	37	-25.5%	2.7%
New Sentence	422	384	323	383	-15.9%	-15.7%
VOP	109	80	91	102	13.8%	-10.8%
Pre-trial	1,542	1,605	1,555	1539	-3.1%	1.0%
Total	2,233	2,280	2,139	2,230	-6.2%	-4.1%
Releases						
Transfer Parole	7	4	2	36	-50.0%	-94.4%
Parole	127	173	158	182	-8.7%	-13.2%
Trans Plac/Furlough	25	20	32	8	60.0%	300.0%
Home Confinement DUI	2	26	55	0	111.5%	-
HWH	188	219	183	182	-16.4%	0.5%
TS	210	240	231	323	-3.8%	-28.5%
Special Parole	84	83	70	81	-15.7%	-13.6%
End of Sentence	996	1,011	853	915	-15.6%	-6.8%
Total	1,639	1,776	1,584	1,727	-10.8%	-8.3%
Pre-trial Releases*						
Did not return from Court	550	560	575	567	2.7%	1.4%
Release to Bond	453	474	401	456	-15.4%	-12.1%

*Monthly totals are measured by occurrence, not by individual.

Board of Pardons and Parole
Prisoners eligible for parole with sentences greater than 24 months:
 Eligible: 8,529, Non-eligible: 834

TABLE 4A – Paroles Granted, New cases

	Hearings	Granted	Rate
FEB	207	177	86%
MAR	183	149	81%
APR	213	162	76%

TABLE 4B – Other Parole Hearings

	Revocations		Rescissions	
	Reparoled	Denied	Reparoled	Denied
FEB	31	31	12	13
MAR	45	31	18	12
APR	34	24	15	13

Public Defender Services

TABLE 5 – Public Defender Cases, Volume

	Cases appointed		Cases disposed	
	GA	JD	GA	JD
NOV	5,262	231	4,044	121
DEC	5,295	221	3,875	148
JAN '12	5,941	204	4,494	182
FEB	5,402	247	3,874	179
MAR	5,671	225	4,245	161

CSSD – Adult Probation

Court Support Services Division: Probation clients in April 2012: 48,059. A year ago, in April 2011, caseload totals were 50,938, a 6% drop.

TABLE 6 – Monthly CSSD Direct Sentenced & Probationer Community Placements

	Community Based	Out-patient	Inpatient/ Resident	Total
	JAN '12	900	1,318	28
FEB	787	1,223	22*	2,032
MAR	1,263	809	31	2,103

*Inpatient residential figure for February reflects a counting change by CSSD.

Pre-trial Diversion and Supervision

TABLE 7 – Pre-trial and split sentence starts

	Pre-trial Case Starts	Bail Starts	Client Supv. Starts	Split Sentence Starts
FEB '12	2,267	2,419	482	
MAR	2,687	2,652	502	
APR	2,389	2,402	455	

TABLE 8 – The Jail Re-interview Program

	Offenders interviewed	Offenders released	Releases last year
JAN '12	1,256	670	542
FEB	1,061	689	589
MAR	1,258	702	819
APR	1,048	660	673

Data Notes: Figures are based on operational data available at the time of this report. Data in subsequent issues may not agree.

CHART 3 – Total Facility Population
May 1, 2012 to May 7, 2012

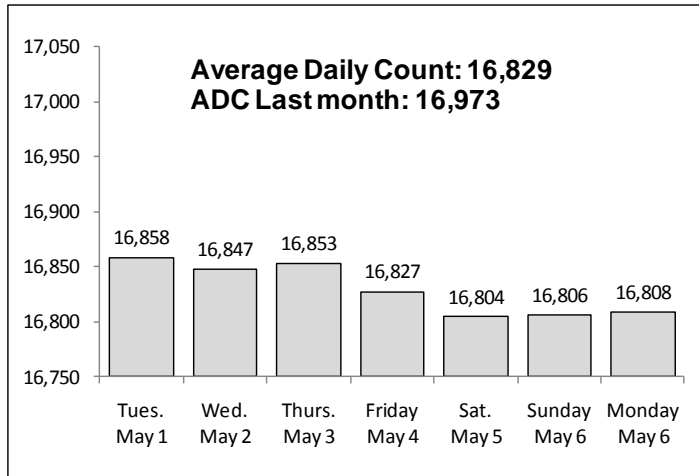


CHART 6 – Monthly DOC Admissions by Type
Mar. 2011 through Apr. 2012

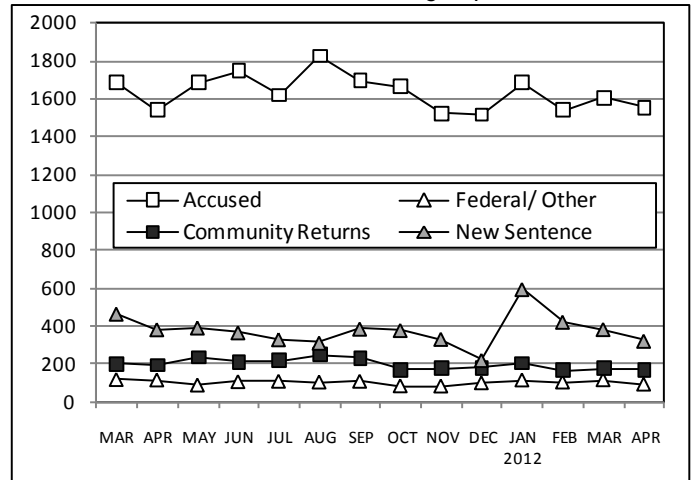


CHART 4 – Prison Population, first-of-month
January 1 through December 1

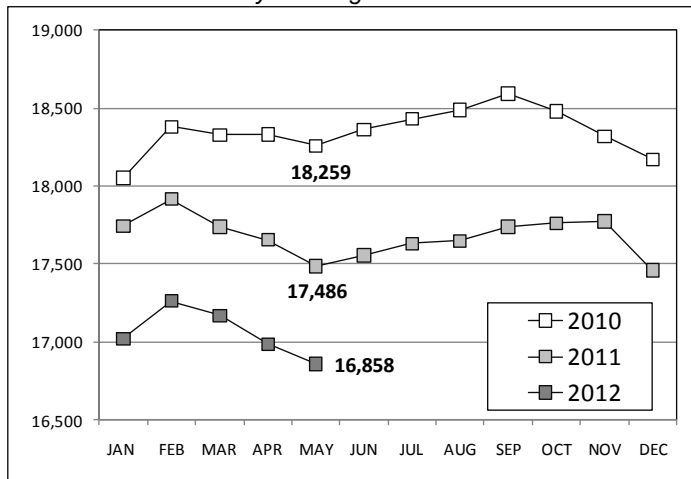


CHART 7 – Readmissions from Community Release
April 2012

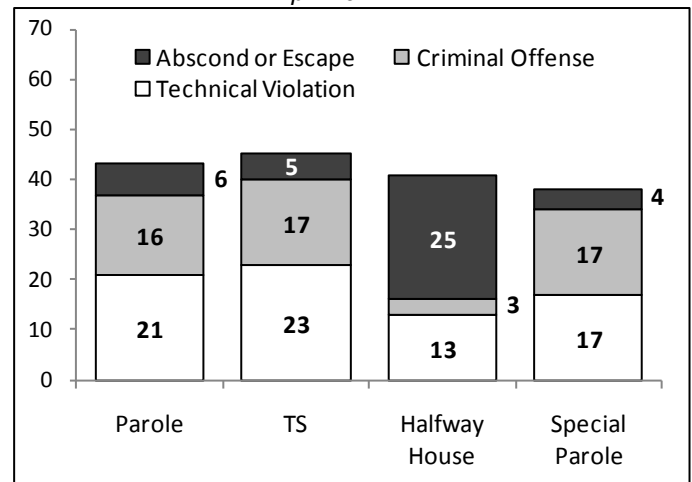


CHART 5 – Statwide criminal arrests
2012 versus previous year*

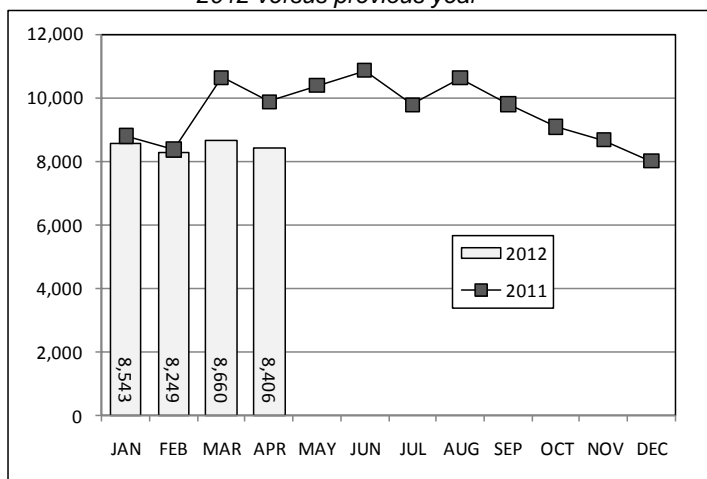
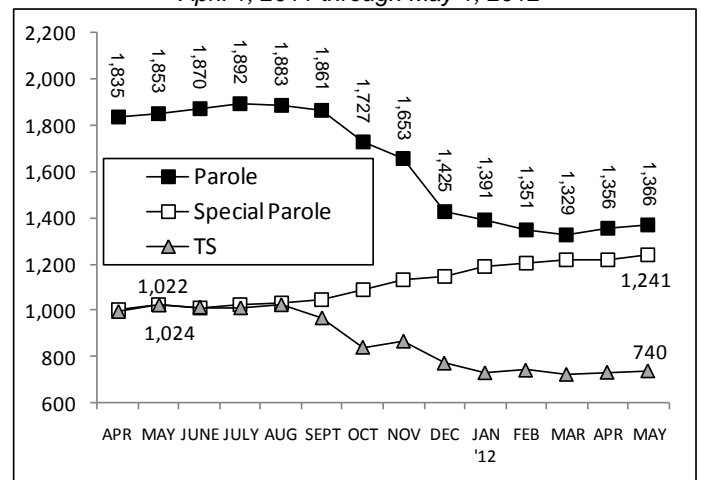


CHART 8 – Parole, TS and Special Parole, supervised cases
April 1, 2011 through May 1, 2012



Note: Data for all charts, with the exception of Chart 5, was supplied by CT DOC. Data for Chart 5 is based on new case starts in the state Offender-Based Tracking System (OBTS). Until last month we received arrest data from Court Operations in the Judicial Branch. Data in Chart 8 includes all offenders under parole jurisdiction.