

OPM - Criminal Justice Policy & Planning Division Monthly Indicators Report



Published by the Connecticut Statistical Analysis Center at the Connecticut Office of Policy & Management

Highlights

- On June 1, 16,718 people were incarcerated in state prison facilities. The last time this figure was lower was in June 1999.
- In April, 776 offenders who completed their prison sentences received at least one day of Risk Reduction Earned Credit (RREC). In May, 802 offenders benefitted from RREC credits. The 313 of these offenders discharged early from community supervision; 489 were released directly from prison. The average offender discharging from prison earned 49.9 days of credit. For offenders discharging from community supervision, the average was 92.6 days.
- The number of offenders on home confinement for DUI and drug offenses continued to ramp up during May. On June 1, there were 103 offenders on home confinement (see table 2). Last month there were 81 offenders on home confinement.
- Although the numbers of offenders on parole and transitional supervision are down compared to last year (see chart 8), the percentage of offenders in DOC custody who are supervised in the community has remained relatively stable at about 20%. The reason, RREC has dramatically reduced the size of the sentenced prison population. Since last October, the sentenced prison population has fallen by 7.3%.

Observation: For every 1000 offenders admitted as pre-trial detainees each month, about 540 are released within 30 days. After 90 days, about 390 remain incarcerated.

Prison Population Forecast

2012 is shaping up to be an anomalous year with respect to historic trends of the prison population. Typically, the inmate population begins to creep up in late spring due to an increase in the level of street arrests. This year, the prison population has defied this expected seasonal rise. Since February the prison system had shed over 500 prisoners. The rate of decline has been generally constant.

Although the Risk Reduction Earned Credit Program (RREC) has been a central factor in the recent drop in the state's prison population, there are other contributing factors including lower monthly arrest volumes, the introduction of home the confinement program for DUI offenders, and changes to the bond process that appear to be reducing the aggregate number of bed days that are used by the pre-trial population.

OPM is currently involved in a study to determine churn rates and the mean length of stay for pre-trial detainees entering the system. The year-on-year data in Tables 2 and 3 illustrate how much flux we are currently experiencing in the prison population.

TABLE 1 –Prison Population Forecast

	Actual (*Avg Daily Count)	OPM 2011 Forecast	Diff. %
FEB '12	17,224*	17,224	
MAR	17,117*	17,171	-0.3%
APR	16,973*	17,172	-1.2%
MAY	16,829*	17,100	-1.6%
JUN	16,698*	17,143	-2.6%
JUL	-	17,213	
AUG	-	17,238	
SEP	-	17,263	
OCT	-	17,238	
NOV	-	17,121	
DEC	-	17,013	
JAN '13	-	16,587	
FEB	-	16,756	

* Average Daily Count, first week of month

CHART 1 – Actual ADC of the prison population against the OPM forecast
January 1, 2011 through February 1, 2013

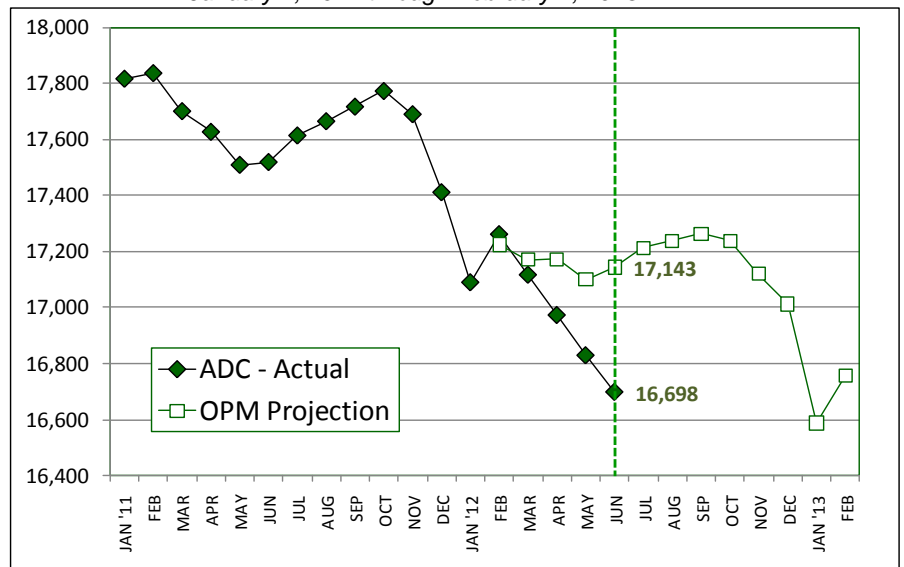
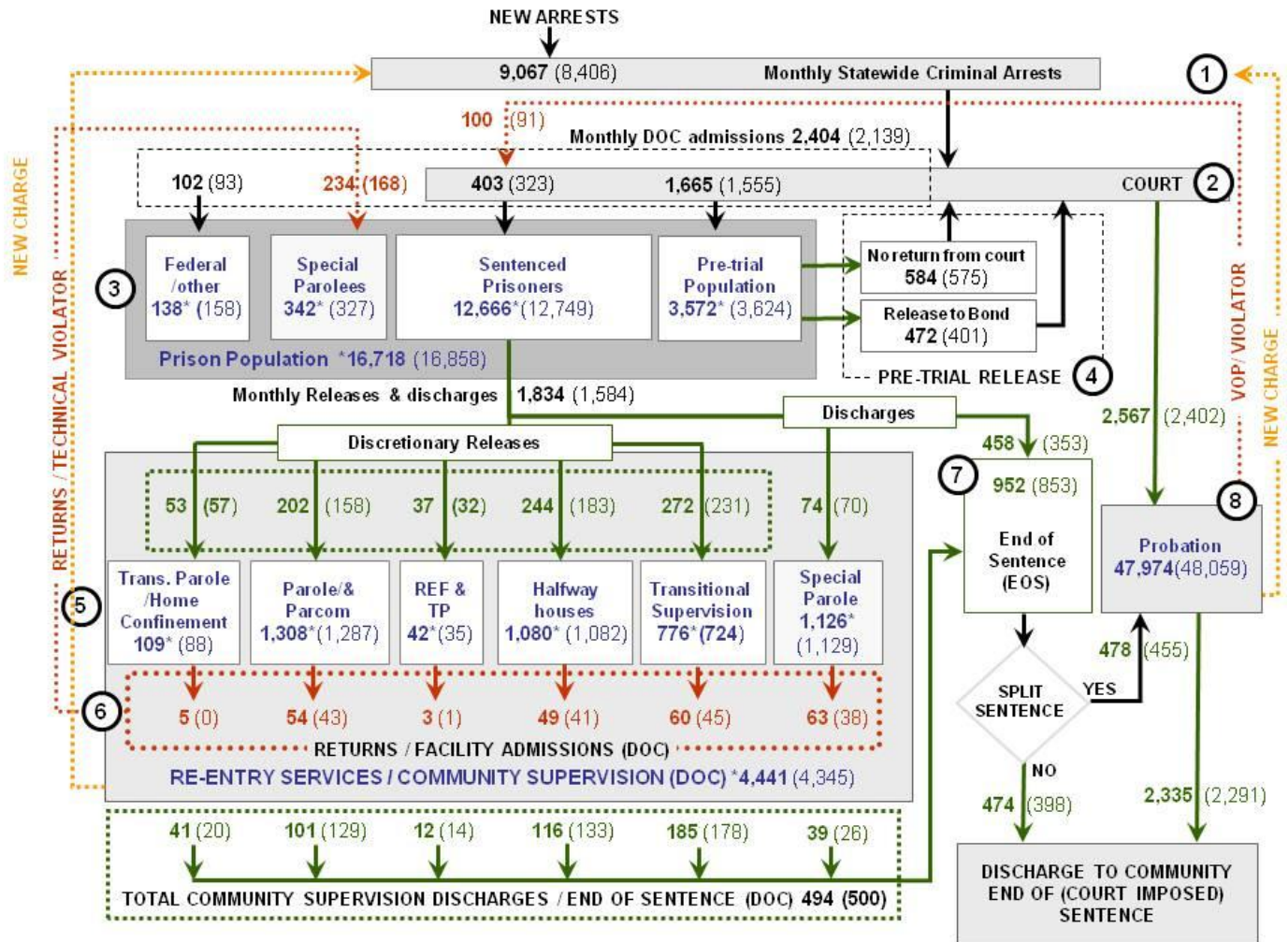


CHART 2 – Connecticut Criminal Justice System – Monthly Overview



Asterisks (*) indicate the population count on June 1, 2012. Figures enclosed by parenthesis are for the previous month. Other figures are monthly admit, release and caseload totals. Sources: Arrests-OBTS, Court and probation data: CSSD, other data DOC, MIS

Unlike states that have county governments, the majority of agencies within Connecticut's criminal justice system are State agencies. The one exception is law enforcement, where there are over 90 local police departments and the Connecticut State Police.

- 1) Arrest:** An individual enters into the criminal justice system at the time of arrest.
- 2) Court:** At arraignment, judges review the charges filed against the accused and set a bail amount. Individuals who cannot meet bail conditions are incarcerated in DOC facilities to await trial. If the defendant is convicted, they may be sentenced to a range of sanctions including a fine, probation, or a term of incarceration.
- 3) DOC Facilities:** Total facility population at DOC contains the unsentenced population, which is awaiting trial, the sentenced population, inmates who have returned from special parole, and offenders charged in federal cases or non-state cases.
- 4) Pre-Trial Release:** Some defendants who are incarcerated pending the disposition of their cases may be eligible for a bond reduction or placement into pre-trial diversionary programs or treatment programs. These programs feature close coordination and cooperation between DOC, CSSD and the Department of Mental Health and Addiction Services (DMHAS).
- 5) Re-Entry Services:** Depending on several factors, an inmate may be eligible to complete a portion of his/her prison sentence under supervision of the DOC's Parole and Community Services Unit. Non-violent Inmates with sentences shorter than two years are eligible for Transitional Supervision after serving 50% of their sentences. Inmates serving sentences longer than two years may be eligible for parole.
- 6) Returns:** Offenders who violate the conditions of their community release may be returned to prison to complete the remainder of their sentences.
- 7) End of Sentence (EOS):** At the end of their sentences some offenders are required to complete a period of post-release supervision. Split-sentence offenders are supervised by the Judicial Branch's Office of Adult Probation. Offenders sentenced to special parole remain under DOC supervision.
- 8) Violation of Probation:** If an individual violates the terms of their probation, an arrest warrant must be issued, and the violator's case is returned to court.

TABLE 2 – DOC Population Counts, First of the Month

	2011		2012	2011		% Change	
	Apr. 1st	May 1st	June 1	June 1	Monthly	Annual	
DOC Facility							
Federal/Other	169	158	138	132	-12.7%	4.5%	
Sentenced	12,837	12,749	12,666	13,613	-0.7%	-7.0%	
Special Parole	324	327	342	319	4.6%	7.2%	
Pre-trial	3,656	3,624	3,572	3,491	-1.4%	2.3%	
Total	16,986	16,858	16,718	17,555	-0.8%	-4.8%	
DOC Community							
Transfer Parole	8	7	6	30	-14.3%	-80.0%	
Parole/ Parcom Total	1,272	1,287	1,308	1,775	1.6%	-26.3%	
Parole	1,098	1,114	1,133	1,599	1.7%	-29.1%	
Parcom @ CT	174	173	175	176	1.2%	-0.6%	
Furlough	13	24	25	5	4.2%	400.0%	
Trans Placement	9	11	17	18	54.5%	-5.6%	
Home confinement/DUI	31	81	103	0	27.2%	-	
Halfway House Total	1,093	1,082	1,080	1,092	-0.2%	-1.1%	
Comm Release	883	875	879	880	0.5%	-0.1%	
TS	16	16	15	10	-6.3%	50.0%	
Parole	84	79	81	95	2.5%	-14.7%	
Transfer Parole	1	0	0	2	-	-100.0%	
Special Parole	109	112	105	105	-6.3%	0.0%	
TS Total	718	724	776	1,003	7.2%	-22.6%	
Special Parole	1,111	1,129	1,126	907	-0.3%	24.1%	
Total	4,255	4,345	4,441	4,830	2.2%	-8.1%	

TABLE 3 – DOC Admissions and Releases, Monthly Totals*

	2011		2012	2011		% Change	
	Mar.	Apr.	May	May	Monthly	Annual	
Admissions							
Federal/Other	116	93	102	88	9.7%	15.9%	
Returns	175	168	234	234	39.3%	0.0%	
Transfer Parole	0	0	5	2	-	-	
Parole	36	43	54	71	25.6%	-23.9%	
Trans Plac/Furlough	2	1	3	0	-	-	
HWH	39	41	49	26	19.5%	88.5%	
TS	47	45	60	85	33.3%	-29.4%	
Special Parole	51	38	63	50	65.8%	26.0%	
New Sentence	384	323	403	392	24.8%	2.8%	
VOP	80	91	100	99	9.9%	1.0%	
Pre-trial	1,605	1,555	1,665	1,684	7.1%	-1.1%	
Total	2,280	2,139	2,404	2,398	12.4%	0.3%	
Releases							
Transfer Parole	4	2	1	26	-50.0%	-96.2%	
Parole	173	158	202	174	27.8%	16.1%	
Trans Plac/Furlough	20	32	37	11	15.6%	236.4%	
Home Confinement DUI	26	55	52	0	-5.5%	-	
HWH	219	183	244	228	33.3%	7.0%	
TS	240	231	272	268	17.7%	1.5%	
Special Parole	83	70	74	59	5.7%	25.4%	
End of Sentence	1,011	853	952	889	11.6%	7.1%	
Total	1,776	1,584	1,834	1,655	15.8%	10.8%	
Pre-trial Releases*							
Did not return from Court	560	575	584	570	1.6%	2.5%	
Release to Bond	474	401	472	459	17.7%	2.8%	

*Monthly totals are measured by occurrence, not by individual.

Board of Pardons and Parole

TABLE 4 - Prisoners with sentences greater than in June 2012

	Parole eligible	Not eligible
APR	8,598	834
MAY	8,529	831
JUNE	8,456	835

TABLE 4A – Paroles Granted, New cases

	Hearings	Granted	Rate
MAR	183	149	81%
APR	213	162	76%
MAY	200	150	75%

TABLE 4B – Other Parole Hearings

	Revocations		Rescissions	
	Reparoled	Denied	Reparoled	Denied
MAR	45	31	18	12
APR	34	24	15	13
MAY	63	32	14	16

Public Defender Services

TABLE 5 – Public Defender Cases

	Cases appointed		Cases disposed	
	GA	JD	GA	JD
FEB	5,402	247	3,874	179
MAR	5,671	225	4,245	161
APR	5,292	208	4,141	171

CSSD – Adult Probation

TABLE 6 – Monthly CSSD Direct Sentenced & Probationer Community Placements

	Community Based	Out-patient	Inpatient/ Resident	Total
FEB	787	1,223	22*	2,032
MAR	1,263	809	31	2,103
APR	1,118	823	22	1,963

*Inpatient residential figure for February reflects a counting change by CSSD.

Pre-trial Diversion and Supervision

TABLE 7 –Pre-trial and split sentence starts

	Pre-trial Case Starts	Bail Starts	Client Supv. Starts	Split Sentence Starts
MAR	2,687	2,652	502	
APR	2,389	2,402	455	
MAY	2,588	2,567	478	

TABLE 8 – The Jail Re-interview Program

	Offenders interviewed	Offenders released	Releases last year
MAR	1,258	702	819
APR	1,048	660	673
MAY	1,358	733	719

Data Notes: Figures are based on operational data available at the time of this report. Data in subsequent issues may not agree.

CHART 3 – Total Prison Population
June 1, 2012 to June 7, 2012

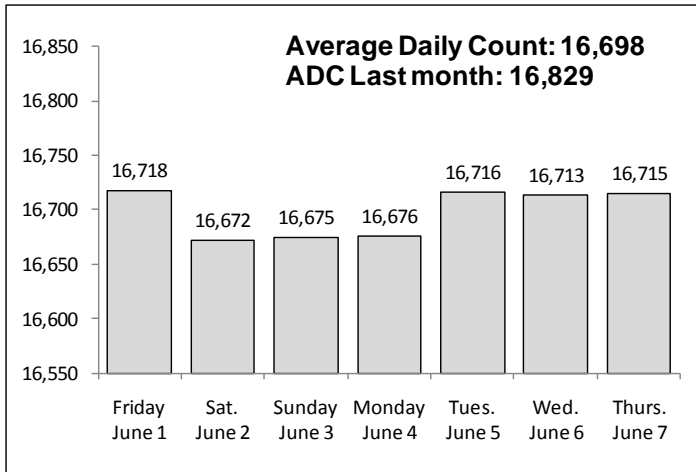


CHART 6 – Monthly DOC Admissions by Type
April 2011 through May 2012

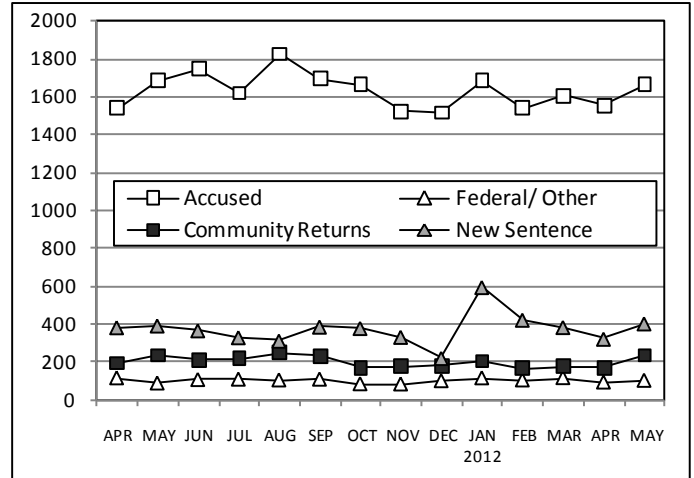


CHART 4 – Prison Population, first-of-month
January 1 through December 1

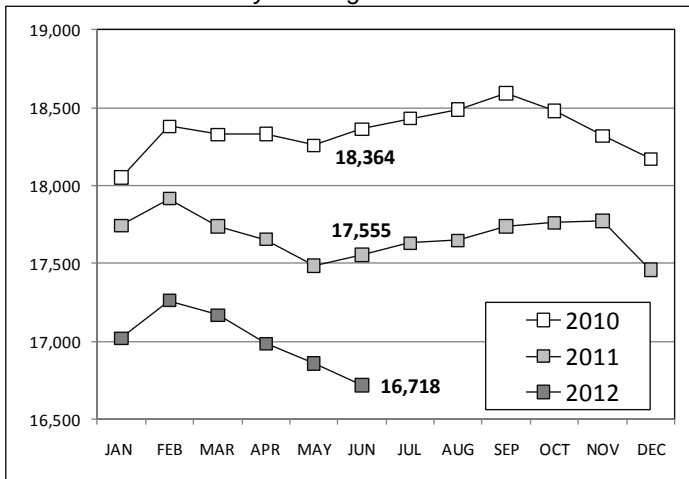


CHART 7 – Readmissions from Community Release
May 2012

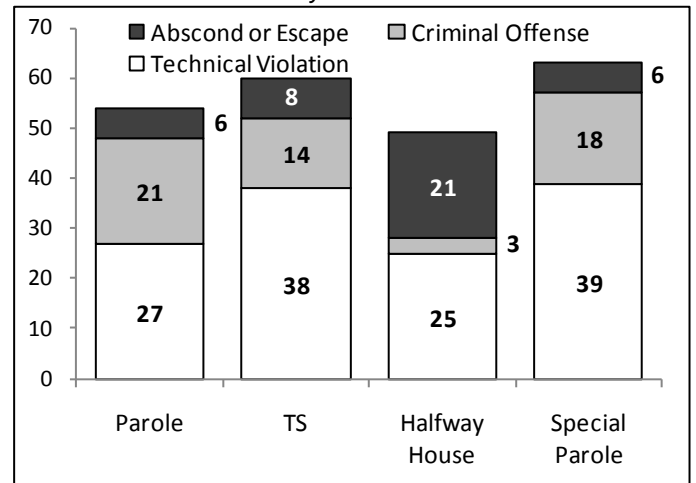


CHART 5 – Monthly Statewide Criminal Arrests
2011 versus 2012

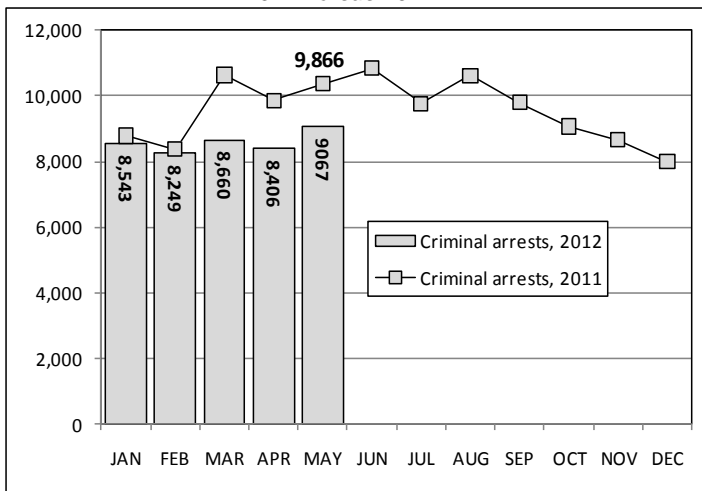
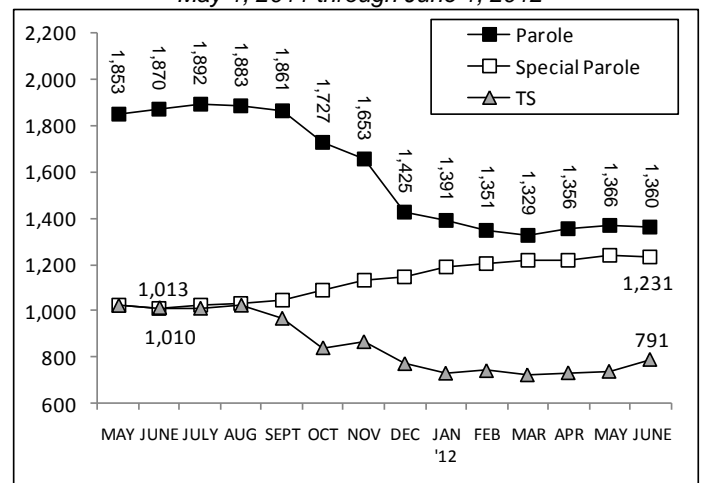


CHART 8 – Parole, TS and Special Parole, supervised cases
May 1, 2011 through June 1, 2012



Note: Data for all charts, with the exception of Chart 5, was supplied by CT DOC. Data for Chart 5 is based on new case starts in the state Offender-Based Tracking System (OBTS).