

Criminal Justice Policy & Planning Division Monthly Indicators Report



Monthly Indicators are available online at: www.ct.gov/OPM/CriminalJustice/Research

Highlights

- The prison population increased by 91 offenders last month. On September 1st, 2011, 17,739 people were incarcerated in the state's prisons and jails.
- This past month several news outlets featured stories on prisoner overcrowding at state correctional facilities in the wake of the closure of Bergin CI and Gate CI. Although the prison population is not abnormally high, given the season, several hundred prisoners are temporarily housed in non-conventional residential areas in some prisons and jails.
- With Bergin CI closed, more short-term, sentenced prisoners are completing their sentences at facilities that traditionally have been used for pre-trial detainees. Last year, on September 1st, Hartford CC held 147 sentenced prisoners. This year there were 381 sentenced inmates at the Hartford jail. At the New Haven jail, the sentenced population grew from 104, in 2010, to 260 this year.
- In a revote, the state's unionized workforce ratified contract concessions with the Malloy administration. As a result, a majority of announced lay-offs were rescinded. Although unions representing correction workers have sued to reopen Bergin CI, in Mansfield, the administration has decided that the facility will remain shuttered.

OPM is currently beginning an analysis of recidivism among sex offenders in the state. For information, please contact OPM's Criminal Justice Division at (860) 418-6238.

Prison Population Forecast

The state's prison population increased in each of the last four months. On May 1st 2011, the state's prisons and jails held 17,486 people. On the first of September, 17,739 prisoners – 253 more – were incarcerated. Last year, during the same period, the prison population grew by 334.

Fluctuations in the state's prison population are largely driven by several factors. The difference between prison-wide admits and releases is simple to visualize.

The impact of changes in the mean-length-of-stay for the average prisoner - is more difficult to conceptualize and quantify. The mean-length-of-stay affects the demand on future prison-bed capacity. As a result, if mean-lengths of stay increase, the prison population can still grow despite the fact that the volume of prisoner releases is far outpacing prisoner admissions.

TABLE 1 –Prison Population Forecast

	Actual (*Avg Daily Count)	OPM 2011 Forecast	Diff. %
FEB '11	17,838*	-	-
MAR	17,702*	17,960	-1.4%
APR	17,628*	17,910	-1.6%
MAY	17,510*	17,792	-1.6%
JUN	17,520*	17,787	-1.5%
JUL	17,615*	17,786	-1.0%
AUG	17,666*	17,810	-0.8%
SEP	17,718*	17,950	-1.3%
OCT	-	18,035	-
NOV	-	17,931	-
DEC	-	17,758	-
JAN '12	-	17,375	-
FEB	-	17,640	-

* Average Daily Count, first week of month

CHART 1 – Total DOC Facility Population, Actual and Projected
January 1, 2010 through February 1, 2012

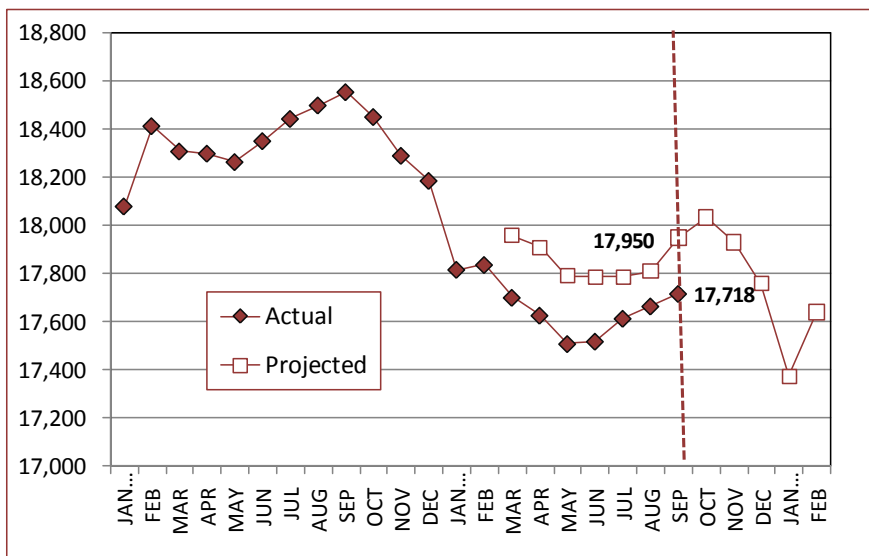
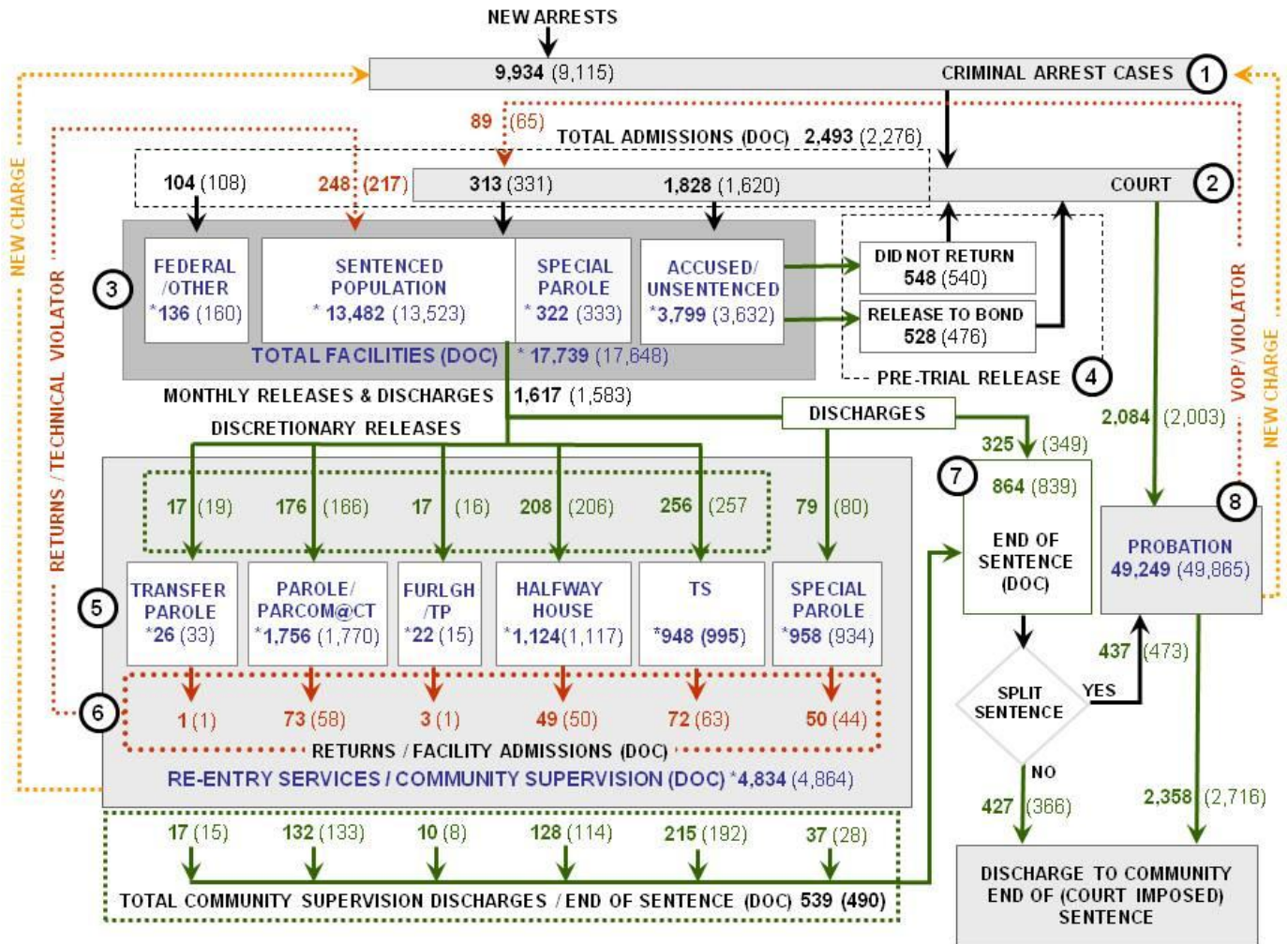


CHART 2 – Connecticut Criminal Justice System – Monthly Overview



Asterisks (*) indicate the population count on September 1, 2011.
 Parentheses enclose figures for the previous month.

Sources: Arrest-Judicial/Court Operations; Court-Judicial/CSSD; Facility/Community Supervision-DOC

Unlike states that have county governments, the majority of agencies within Connecticut's criminal justice system are State agencies. The one exception is law enforcement, where there are over 90 local police departments and the Connecticut State Police.

- 1) Arrest:** An individual enters into the criminal justice system at the time of arrest.
- 2) Court:** At arraignment, judges review the charges filed against the accused and set a bail amount. Individuals who cannot meet bail conditions are incarcerated in DOC facilities to await trial. If the defendant is convicted, they may be sentenced to a range of sanctions including a fine, probation, or a term of incarceration.
- 3) DOC Facilities:** Total facility population at DOC contains the unsentenced population, which is awaiting trial, the sentenced population, inmates who have returned from special parole, and offenders charged in federal cases or non-state cases.
- 4) Pre-Trial Release:** Some defendants who are incarcerated pending the disposition of their cases may be eligible for a bond reduction or placement into pre-trial diversionary programs or treatment programs. These programs feature close coordination and cooperation between DOC, CSSD and the Department of Mental Health and Addiction Services (DMHAS).
- 5) Re-Entry Services:** Depending on several factors, an inmate may be eligible to complete a portion of his/her prison sentence under supervision of the DOC's Parole and Community Services Unit. Non-violent Inmates with sentences shorter than two years are eligible for Transitional Supervision after serving 50% of their sentences. Inmates serving sentences longer than two years may be eligible for parole.
- 6) Returns:** Offenders who violate the conditions of their community release may be returned to prison to complete the remainder of their sentences.
- 7) End of Sentence (EOS):** At the end of their sentences some offenders are required to complete a period of post-release supervision. Split-sentence offenders are supervised by the Judicial Branch's Office of Adult Probation. Offenders sentenced to special parole remain under DOC supervision.
- 8) Violation of Probation:** If an individual violates the terms of their probation, an arrest warrant must be issued, and the violator's case is returned to court.

TABLE 2 – DOC Population Counts, First of the Month

	2010	2011	2011	2010	% Change	
	July 1	Aug. 1st	Sept. 1st	Sept. 1st	Monthly	Annual
DOC Facility						
Federal/Other	139	160	136	138	-17.6%	-1.4%
Sentenced	13,590	13,523	13,482	13,855	-0.3%	-2.7%
Special Parole	322	333	322	344	-3.4%	-6.4%
Accused/Unsentenced	3,580	3,632	3,799	4,256	4.4%	-10.7%
Total	17,631	17,648	17,739	18,593	0.5%	-4.6%
DOC Community						
Transfer Parole	30	33	26	55	-26.9%	-52.7%
Parole/ Parcom Total	1,789	1,770	1,756	1,774	-0.8%	-1.0%
Parole	1,613	1,594	1,579	1,603	-0.9%	-1.5%
Parcom @ CT	176	176	177	171	0.6%	3.5%
Furlgh/Trans Place Total	15	15	22	25	31.8%	-12.0%
Furlough	2	7	11	6	36.4%	83.3%
Trans Placement	13	8	11	19	27.3%	-42.1%
Halfway House Total	1,105	1,117	1,124	1,060	0.6%	6.0%
Comm Release	878	889	908	883	2.1%	2.8%
TS	14	18	19	13	5.3%	46.2%
Parole	103	113	105	85	-7.6%	23.5%
Transfer Parole	0	0	1	2	-	-
Special Parole	109	97	91	77	-6.6%	18.2%
TS Total	996	995	948	1,010	-5.0%	-6.1%
Special Parole	914	934	958	840	2.5%	14.0%
Total	4,849	4,864	4,834	4,764	-0.6%	1.5%

TABLE 3 – DOC Admissions and Releases, Monthly Totals

	2010	2010	2011	2010	% Change	
	June	July	Aug.	Aug.	Monthly	Annual
Admissions						
Federal/Other	106	108	104	84	-3.7%	23.8%
Returns	212	217	248	245	14.3%	1.2%
Transfer Parole	0	1	1	2	-	-
Parole	58	58	73	88	25.9%	-17.0%
Trans Plac/Furlough	5	1	3	1	-	-
HWH	32	50	49	35	-2.0%	40.0%
TS	74	63	72	59	14.3%	22.0%
Special Parole	43	44	50	60	13.6%	-16.7%
New Sentence	367	331	313	403	-5.4%	-22.3%
VOP	100	65	89	85	36.9%	4.7%
Accused	1,748	1,620	1,828	2098	12.8%	-12.9%
Total	2,433	2,276	2,493	2,830	9.5%	-11.9%
Releases						
Transfer Parole	18	19	17	40	-10.5%	-57.5%
Parole	187	166	176	213	6.0%	-17.4%
Trans Plac/Furlough	7	16	17	16	6.3%	6.3%
HWH	182	206	208	200	1.0%	4.0%
TS	294	257	256	298	-0.4%	-14.1%
Special Parole	75	80	79	76	-1.3%	3.9%
End of Sentence	870	839	864	885	3.0%	-2.4%
Total	1,633	1,583	1,617	1,728	2.1%	-6.4%
Pre-trial Releases*						
Did not return from Court	560	540	548	698	1.5%	-21.5%
Release to Bond	523	476	528	674	10.9%	-21.7%

*Monthly totals are measured by occurrence, not by individual.

Board of Pardons and Parole

Parole hearing

The Board considered 181 new parole cases at full panel hearings in August. In addition, another 90 parole violation cases were reviewed. Sixty-eight (68) of these cases resulted in offenders being reparaoled. Out of 68, 55 cases had been for parole revocations; 13 were for rescissions.

TABLE 4 – Paroles Granted, Monthly

	Hearings	Granted	Rate
JUN	198	160	81%
JUL	197	149	76%
AUG	181	143	79%

The Board considered one case for Transfer Parole this month.

Full data on transfer paroles will be published once the Board completes its program evaluation.

Public Defender Services

Public Defender services are provided to "indigent" adults and juveniles at 37 field offices and by six specialized units around the state.

TABLE 5 – PD Cases, Appointed & Disposed

	Cases appointed		Cases disposed	
	GA	JD	GA	JD
MAY	5,444	272	4,231	148
JUN	5,725	207	4,011	181
JUL	5,604	260	3,821	157

Data Notes: Figures are based on the data available at the time of this report. Data in subsequent issues may not agree.

CSSD – Adult Probation

Court Support Services Division: total client caseload for August 2011: 49,249. In July, there were 49,865 adult probation cases.

TABLE 6 – Monthly CSSD Direct Sentenced & Probationer Community Placements

	Community Based	Out-patient	Inpatient/Resident	Total
MAY	987	969	22	1,982
JUN	1,475	974	38	2,487
JULY	984	1,263	34	2,281

Pre-trial Diversion and Supervision

TABLE 7 – Pre-trial Diversion & Supervision

	Pre-trial Bail Case Starts	Client Supv. Starts
JUNE	2,418	2,190
JULY	2,365	2,003
AUG	2,657	2,084

TABLE 8 – The Jail Re-interview Program

	Interviews 2011	Releases 2011	Releases 2010
JUNE	1,425	725	742
JULY	1,335	713	722
AUG	1,349	716	712

Data Notes: Figures are based on the data available at the time of this report. Data in subsequent issues may not agree.

CHART 3 – Daily Facility Population
September 1, 2011 to September 7, 2011

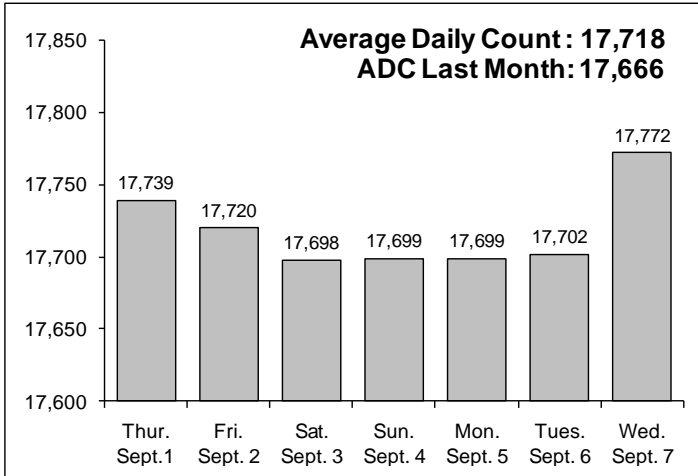


CHART 6 – Monthly DOC Admissions by Type
July 2010 through August 2011

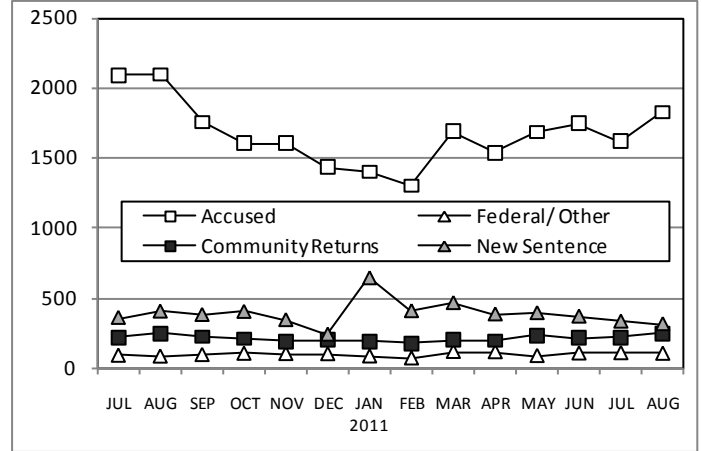


CHART 4 – Prison Population, first-of-month
January 1 through December 1

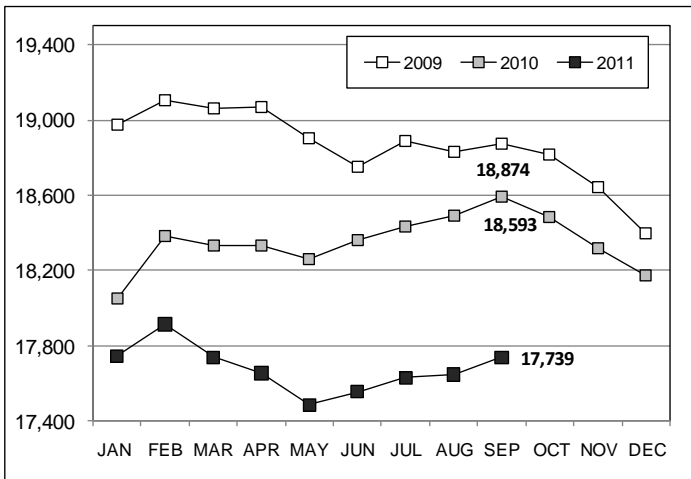


CHART 7 – Readmissions from Community Release
August 2011

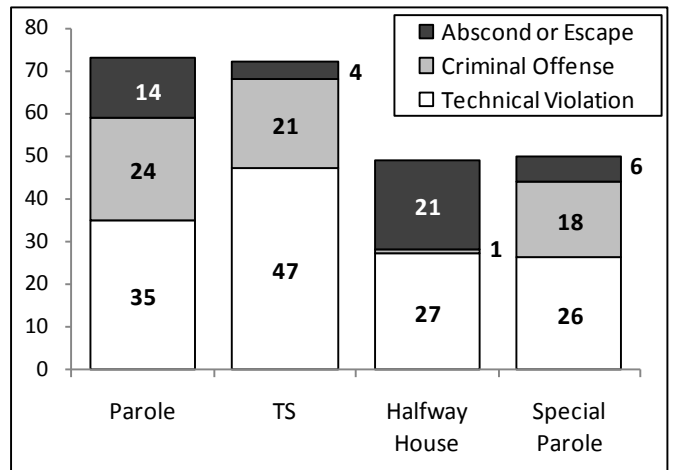


CHART 5 – Monthly, Statewide Criminal Arrests
2011 against the 3-year average

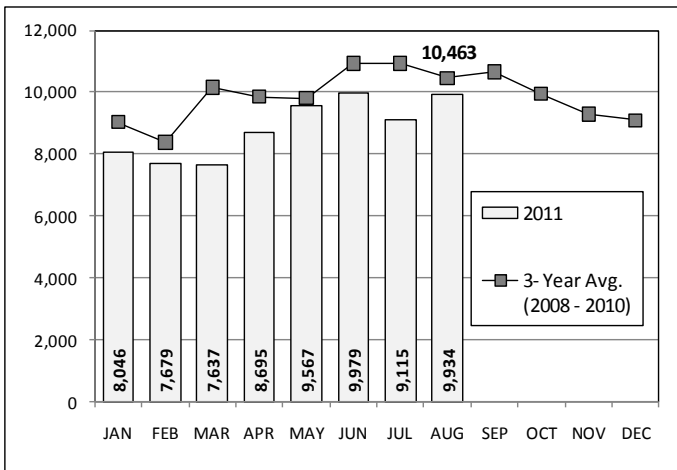
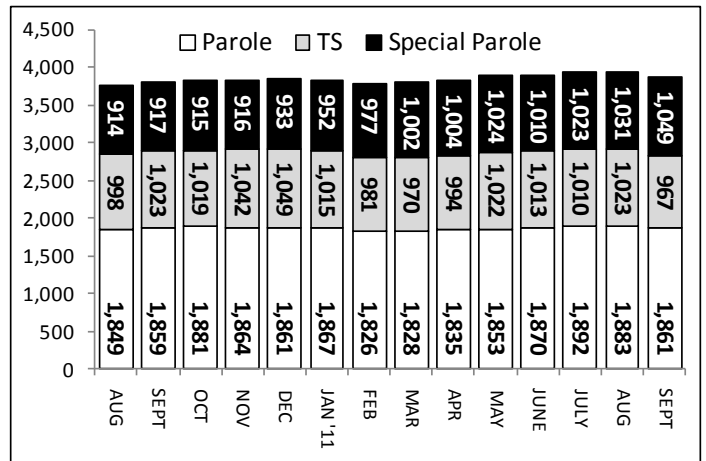


CHART 8 – Parole, TS and Special Parole, supervised cases
August 1, 2010 through September 1, 2011



Note: Data for all charts, with the exception of Chart 5, was supplied by CT DOC. Data for Chart 5 was provided by Court Operations. Data in Chart 8 includes all offenders under parole jurisdiction.