

Criminal Justice Policy & Planning Division Monthly Indicators Report



Monthly Indicators are available online at: www.ct.gov/OPM/CriminalJustice/Research

Highlights

- The prison population rose at a very slow rate last month. On September 1st, 2011, 17,739 people were incarcerated in the state. On October 1st, the figure was 17,762.
- The DOC rolled out its Risk Reduction Earned Credits (RREC), program in September. During the first month, credits were only applied to offenders who were already out of prison on some type of community supervision.
- Some indication of how many offenders are affected by RREC can be gleaned from Chart 2. In August, 539 offenders on some form of community release discharged from their sentences. Last month, in September, 971 offenders completed their sentences.
- Since the number of offenders leaving prison for community programs did not increase significantly during the month, the system experienced a temporary drop in parole and TS caseloads.
- Recently enacted legislation allows the state's DOC Commissioner to impose house arrest on offenders convicted of DUI or minor drug offenses. OPM does not anticipate that this legislation will have an immediate impact on the size of the state's prison population.

More information on Risk Reduction Earned Credits and home arrest for DUI offenders is available on the DOC website at:
<http://www.ct.gov/doc/cwp/view.asp?a=1502&Q=4818>

Prison Population Forecast

Although the state's prison population has increased in each of the last five months, OPM expects it to decline during the month of October as Risk Reduction Earned Credits are applied to the sentenced prison population and season factors begin to assert themselves.

In recent years, October has been the month in which the prison population typically begins its annual contraction through the remainder of the year.

As RREC beings to be applied to the incarcerated population we should see prison population numbers drop off at a slightly faster rate than anticipated. The DOC is currently compiling data on the number offenders have been released as a result of RREC and how much credit they have earned.

The DOC's Administrative Directive 4.2A, available on-line, explains the guidelines governing Risk Reduction Earned Credits.

TABLE 1 –Prison Population Forecast

	Actual (*Avg Daily Count)	OPM 2011 Forecast	Diff. %
FEB '11	17,838*	-	-
MAR	17,702*	17,960	-1.4%
APR	17,628*	17,910	-1.6%
MAY	17,510*	17,792	-1.6%
JUN	17,520*	17,787	-1.5%
JUL	17,615*	17,786	-1.0%
AUG	17,666*	17,810	-0.8%
SEP	17,718*	17,950	-1.3%
OCT	17774*	18,035	-1.4%
NOV	-	17,931	-
DEC	-	17,758	-
JAN '12	-	17,375	-
FEB	-	17,640	-

* Average Daily Count, first week of month

CHART 1 – Total DOC Facility Population, Actual and Projected
January 1, 2010 through February 1, 2012

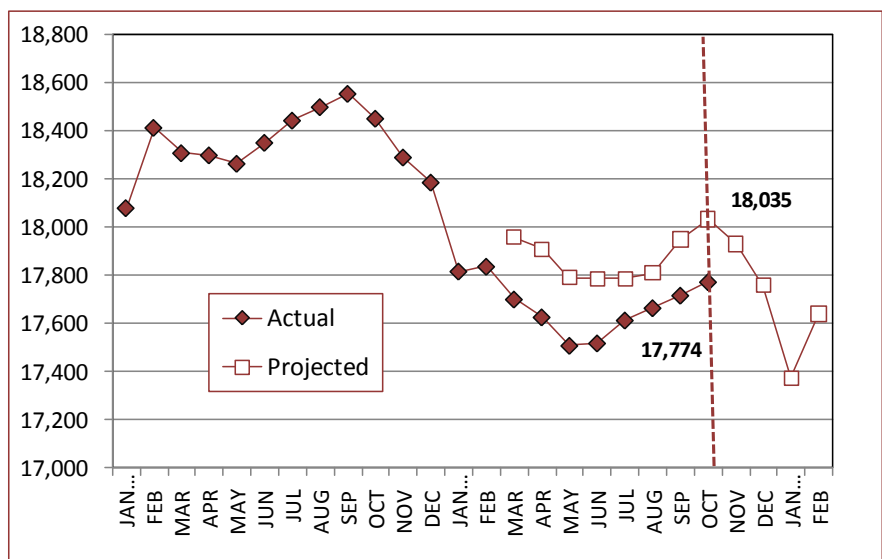
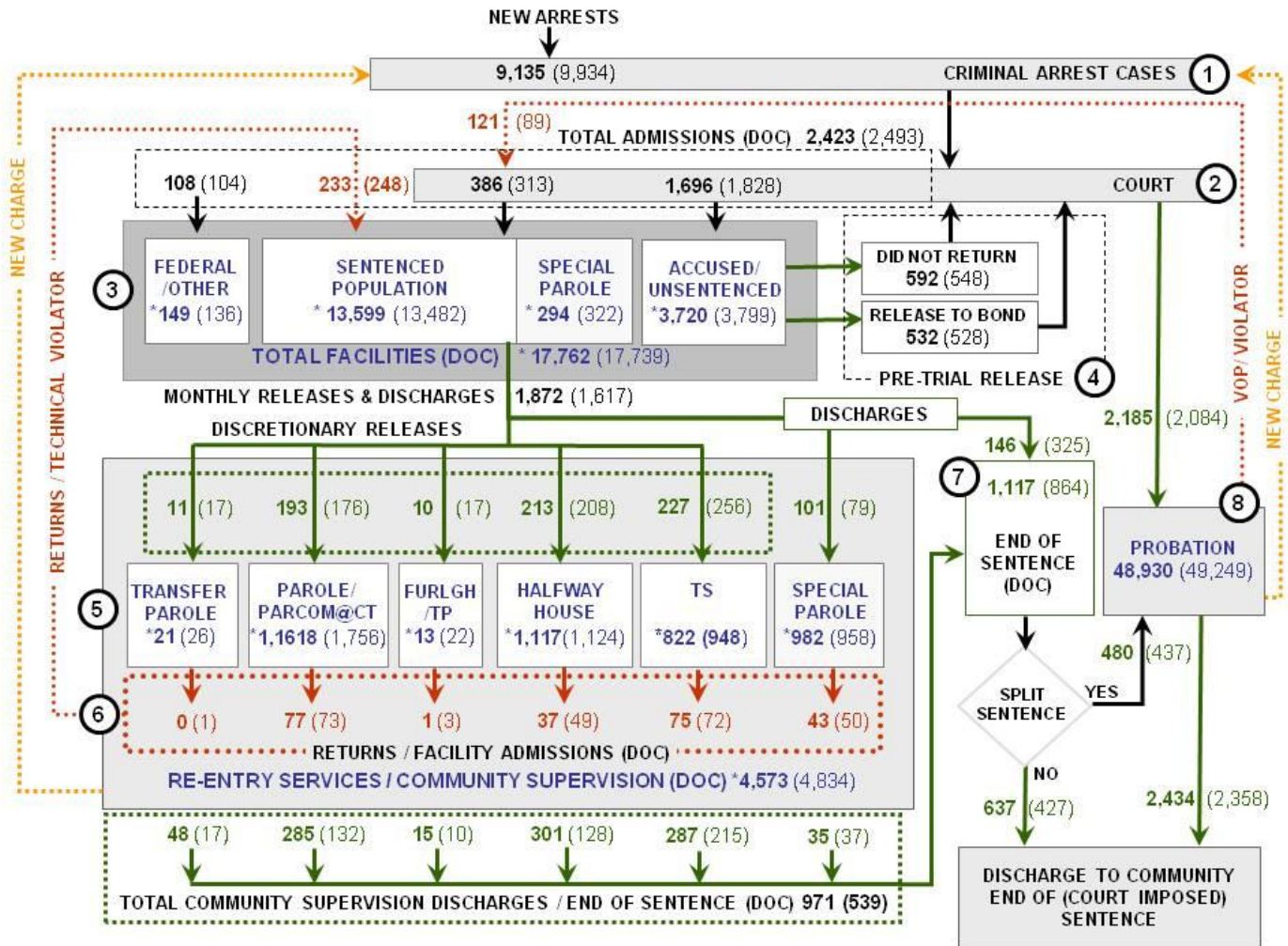


CHART 2 – Connecticut Criminal Justice System – Monthly Overview – Sept. 1, 2011 to Oct. 1, 2011



Asterisks (*) indicate the population count on October 1, 2011.
 Parentheses enclose figures for the previous month.

Sources: Arrest-Judicial/Court Operations; Court-Judicial/CSSD; Facility/Community Supervision-DOC

Unlike states that have county governments, the majority of agencies within Connecticut's criminal justice system are State agencies. The one exception is law enforcement, where there are over 90 local police departments and the Connecticut State Police.

- 1) Arrest:** An individual enters into the criminal justice system at the time of arrest.
- 2) Court:** At arraignment, judges review the charges filed against the accused and set a bail amount. Individuals who cannot meet bail conditions are incarcerated in DOC facilities to await trial. If the defendant is convicted, they may be sentenced to a range of sanctions including a fine, probation, or a term of incarceration.
- 3) DOC Facilities:** Total facility population at DOC contains the unsentenced population, which is awaiting trial, the sentenced population, inmates who have returned from special parole, and offenders charged in federal cases or non-state cases.
- 4) Pre-Trial Release:** Some defendants who are incarcerated pending the disposition of their cases may be eligible for a bond reduction or placement into pre-trial diversionary programs or treatment programs. These programs feature close coordination and cooperation between DOC, CSSD and the Department of Mental Health and Addiction Services (DMHAS).
- 5) Re-Entry Services:** Depending on several factors, an inmate may be eligible to complete a portion of his/her prison sentence under supervision of the DOC's Parole and Community Services Unit. Non-violent Inmates with sentences shorter than two years are eligible for Transitional Supervision after serving 50% of their sentences. Inmates serving sentences longer than two years may be eligible for parole.
- 6) Returns:** Offenders who violate the conditions of their community release may be returned to prison to complete the remainder of their sentences.
- 7) End of Sentence (EOS):** At the end of their sentences some offenders are required to complete a period of post-release supervision. Split-sentence offenders are supervised by the Judicial Branch's Office of Adult Probation. Offenders sentenced to special parole remain under DOC supervision.
- 8) Violation of Probation:** If an individual violates the terms of their probation, an arrest warrant must be issued, and the violator's case is returned to court.

TABLE 2 – DOC Population Counts, First of the Month

	2010	2011	2011	2010	% Change	
	Aug. 1st	Sept. 1st	Oct. 1st	Oct. 1st	Monthly	Annual
DOC Facility						
Federal/Other	160	136	149	145	8.7%	2.8%
Sentenced	13,523	13,482	13,599	13,780	0.9%	-1.3%
Special Parole	333	322	294	354	-9.5%	-16.9%
Accused/Unsentenced	3,632	3,799	3,720	4,202	-2.1%	-11.5%
Total	17,648	17,739	17,762	18,481	0.1%	-3.9%
DOC Community						
Transfer Parole	33	26	21	37	-23.8%	-43.2%
Parole/ Parcom Total	1,770	1,756	1,618	1,798	-8.5%	-10.0%
Parole	1,594	1,579	1,443	1,625	-9.4%	-11.2%
Parcom @ CT	176	177	175	173	-1.1%	1.2%
Furlgh/Trans Place Total	15	22	13	27	-69.2%	-51.9%
Furlough	7	11	6	5	-83.3%	20.0%
Trans Placement	8	11	7	22	-57.1%	-68.2%
Halfway House Total	1,117	1,124	1,117	1,083	-0.6%	3.1%
Comm Release	889	908	881	905	-3.1%	-2.7%
TS	18	19	19	10	0.0%	90.0%
Parole	113	105	109	83	3.7%	31.3%
Transfer Parole	0	1	1	2	-	-
Special Parole	97	91	107	83	15.0%	28.9%
TS Total	995	948	822	1,009	-15.3%	-18.5%
Special Parole	934	958	982	832	2.4%	18.0%
Total	4,864	4,834	4,573	4,786	-5.7%	-4.5%

TABLE 3 – DOC Admissions and Releases, Monthly Totals

	2010	2010	2011	2010	% Change	
	July	Aug.	Sept.	Sept.	Monthly	Annual
Admissions						
Federal/Other	108	104	108	95	3.8%	13.7%
Returns	217	248	233	224	-6.0%	4.0%
Transfer Parole	1	1	0	0	-	-
Parole	58	73	77	71	5.5%	8.5%
Trans Plac/Furlough	1	3	1	0	-	-
HWH	50	49	37	38	-24.5%	-2.6%
TS	63	72	75	67	4.2%	11.9%
Special Parole	44	50	43	48	-14.0%	-10.4%
New Sentence	331	313	386	379	23.3%	1.8%
VOP	65	89	121	86	36.0%	40.7%
Accused	1,620	1,828	1,696	1755	-7.2%	-3.4%
Total	2,276	2,493	2,423	2,453	-2.8%	-1.2%
Releases						
Transfer Parole	19	17	11	30	-35.3%	-63.3%
Parole	166	176	193	214	9.7%	-9.8%
Trans Plac/Furlough	16	17	10	10	-41.2%	0.0%
HWH	206	208	213	208	2.4%	2.4%
TS	257	256	227	285	-11.3%	-20.4%
Special Parole	80	79	101	73	27.8%	38.4%
End of Sentence	839	864	1,117	930	29.3%	20.1%
Total	1,583	1,617	1,872	1,750	15.8%	7.0%
Pre-trial Releases*						
Did not return from Court	540	548	592	638	8.0%	-7.2%
Release to Bond	476	528	532	571	0.8%	-6.8%

*Monthly totals are measured by occurrence, not by individual.

Board of Pardons and Parole

Parole hearing

The Board considered 225 new parole cases at full panel hearings in September. In addition, another 126 parole violation cases were reviewed. Eighty-seven (87) of these cases resulted in offenders being reparaoled. Of these, 67 cases had been for parole revocations; 20 were for parole rescissions.

TABLE 4 – Paroles Granted, Monthly

	Hearings	Granted	Rate
JUL	197	149	76%
AUG	181	143	79%
SEP	225	180	80%

The Board considered one case for Transfer Parole this month.

Public Defender Services

Public Defender services are provided to "indigent" adults and juveniles at 37 field offices and by six specialized units around the state.

TABLE 5 – PD Cases, Appointed & Disposed

	Cases appointed		Cases disposed	
	GA	JD	GA	JD
JUN	5,725	207	4,011	181
JUL	5,604	260	3,821	157
AUG	6,462	255	4,205	150

Data Notes: Figures are based on the data available at the time of this report. Data in subsequent issues may not agree.

CSSD – Adult Probation

Court Support Services Division: total client caseload for September 2011: 48,930. In July, there were 49,249 adult probation cases.

TABLE 6 – Monthly CSSD Direct Sentenced & Probationer Community Placements

	Community Based	Out-patient	Inpatient/ Resident	Total
JUN	1,475	974	38	2,487
JULY	984	1,263	34	2,281
AUG	713	994	24	1,731

Pre-trial Diversion and Supervision

TABLE 7 – Pre-trial Diversion & Supervision

	Pre-trial Bail Client Supv.	
	Case Starts	Starts
JULY	2,365	2,003
AUG	2,657	2,084
SEPT	2,301	2,185

TABLE 8 – The Jail Re-interview Program

	Interviews	Releases	Releases
	2011	2011	2010
JULY	1,335	713	722
AUG	1,349	716	712
SEPT	1,377	807	694

Data Notes: Figures are based on the data available at the time of this report. Data in subsequent issues may not agree.

CHART 3 – Daily Facility Population
October 1, 2011 to October 7, 2011

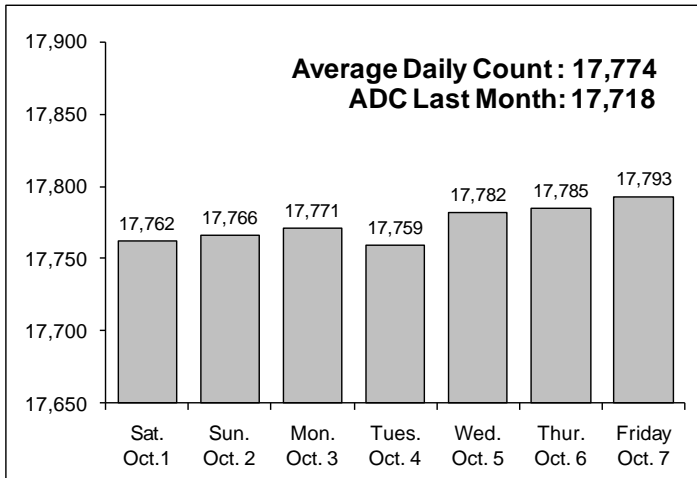


CHART 6 – Monthly DOC Admissions by Type
Aug. 2010 through Sept. 2011

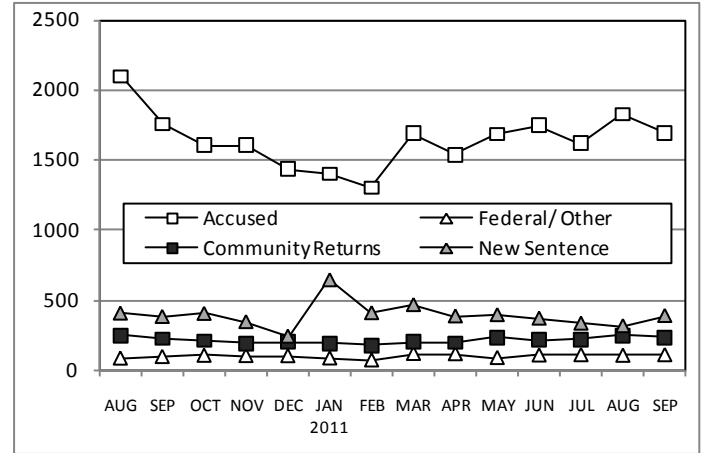


CHART 4 – Prison Population, first-of-month
January 1 through December 1

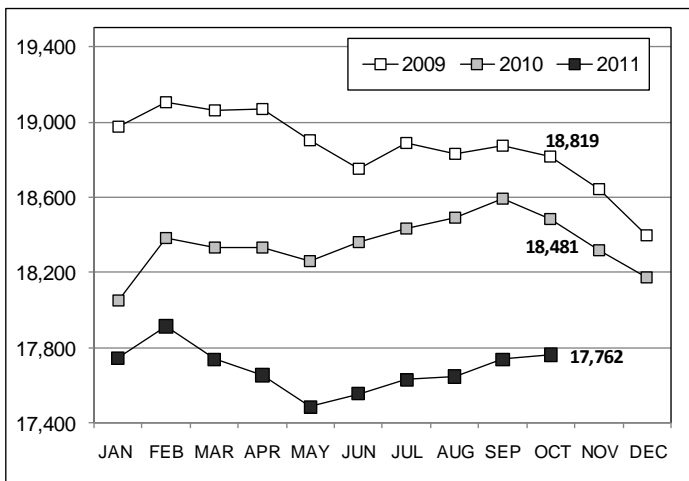


CHART 7 – Readmissions from Community Release
September 2011

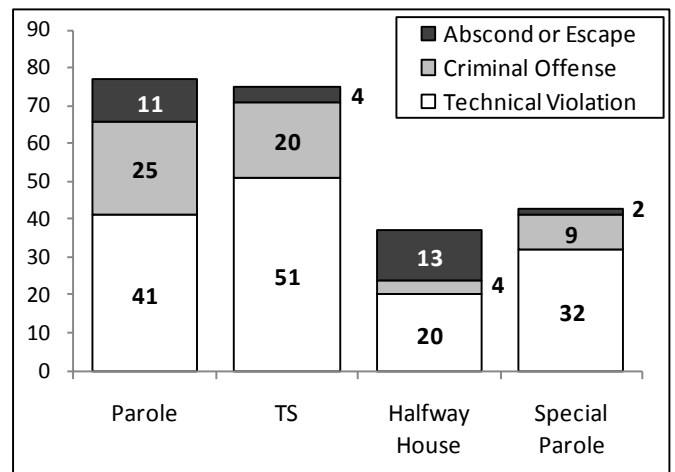


CHART 5 – Monthly, Statewide Criminal Arrests
2011 against the 3-year average

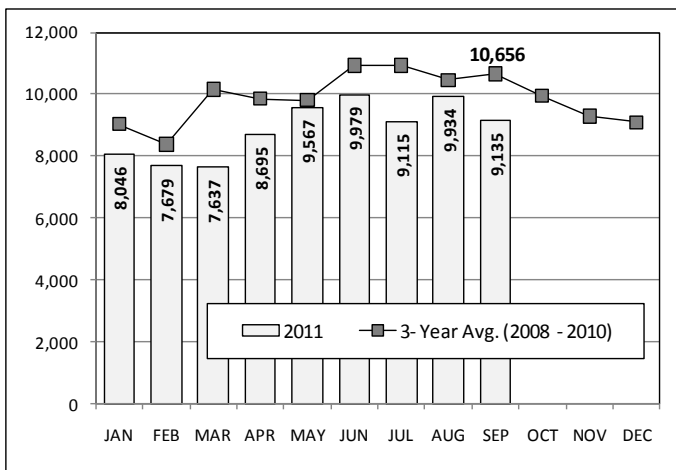
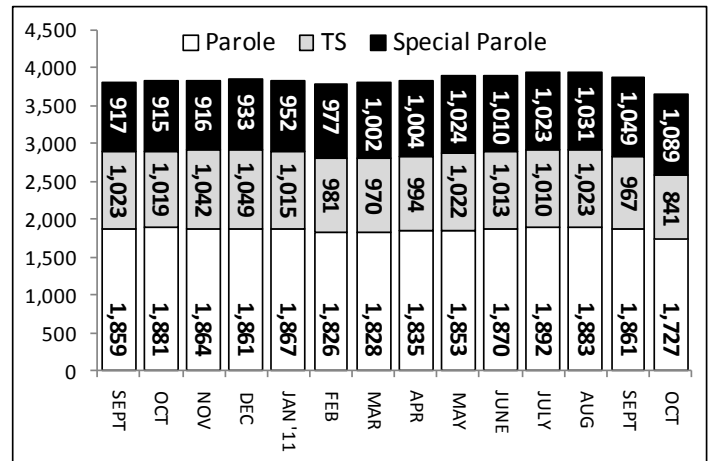


CHART 8 – Parole, TS and Special Parole, supervised cases
September 1, 2010 through October 1, 2011



Note: Data for all charts, with the exception of Chart 5, was supplied by CT DOC. Data for Chart 5 was provided by Court Operations. Data in Chart 8 includes all offenders under parole jurisdiction.