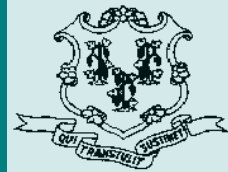


Criminal Justice Policy & Planning Division Monthly Indicators Report



RESEARCH, ANALYSIS & EVALUATION — WWW.CT.GOV/OPM/CriminalJustice/Research

Highlights

- Between March 1st, and April 1st the prison population grew by one inmate from 18,330 to 18,331. The sentenced population was also stable, gaining only 3 offenders during the month of March (See Chart 2).
- Although the total facility population remained stable, the DOC reported 400 more admits of accused offenders in March than it did in February. The increased volume of unsentenced admits was almost certainly related to the increase in statewide criminal arrests that jumped from 8,143 in February to 10,493 in March.
- The number of statewide criminal arrests rose by almost 29% between February 1st and March 1st. An increase of this size is not unprecedented. In 2009, the number of criminal arrests increased by 27% during the same period (See Chart 5).
- In recent months, the number of offenders on Transitional Supervision has been declining (See Chart 8). This trend appears related to several factors including a) a shrinking pool of TS-eligible offenders b) obstacles in releasing offenders who lack appropriate sponsors, and c) the adequacy of the DOC's network of community-bed providers.

The CJPAC Research Workgroup is expanding. During April, the Workgroup, which includes representatives from DOC, DPS, BOPP, CSSD, DMHAS and OPM, will welcome a new partner agency, The Division of Public Defender Services.

Prison Population Forecast

The state's prison population remained relatively stable during March. The average daily count of the prison population during the first week of March was 18,300, nine fewer than in February.

OPM anticipates that the prison population will fall below 18,200 during the month of April. It should remain at that approximate level until midsummer.

Since OPM produced its latest prison population forecast in February 2010, the actual inmate count has tracked closely to the population estimates. The true accuracy of OPM's projection will be tested over the next four months.

As warmer weather arrives, the volume of criminal arrests typically increases. These increases generally result in an increase in the number of monthly unsentenced admits to DOC facilities. In recent years, these numbers have fluctuated considerably.

TABLE 1 –Prison Population Forecast

	Actual (* Avg Daily)	OPM 2010 Forecast
FEB '10	18,414*	-
MAR	18,309*	18,332
APR	18,300*	18,281
MAY	-	18,161
JUN	-	18,156
JUL	-	18,155
AUG	-	18,180
SEP	-	18,323
OCT	-	18,411
NOV	-	18,305
DEC	-	18,129
JAN '11	-	17,738
FEB	-	18,009

* Average Daily Count, first week of month

CHART 1 – Total DOC Facility Population, Actual and Projected
January 1, 2009 through February 1, 2010

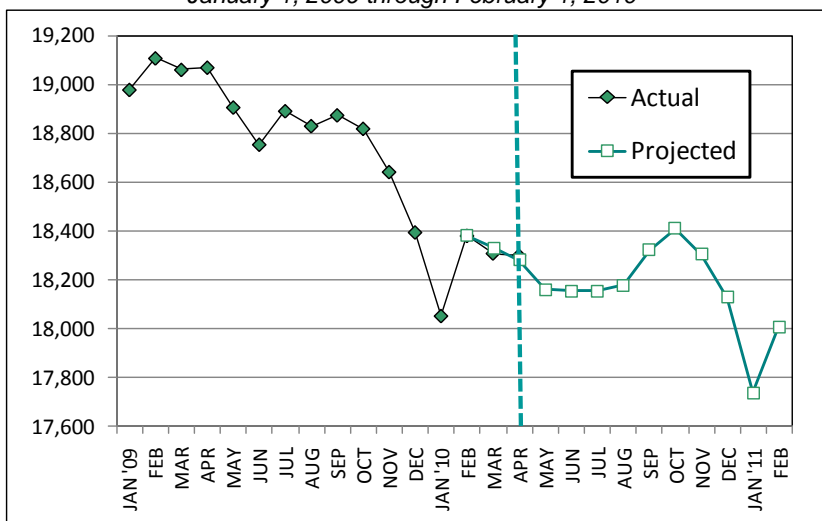
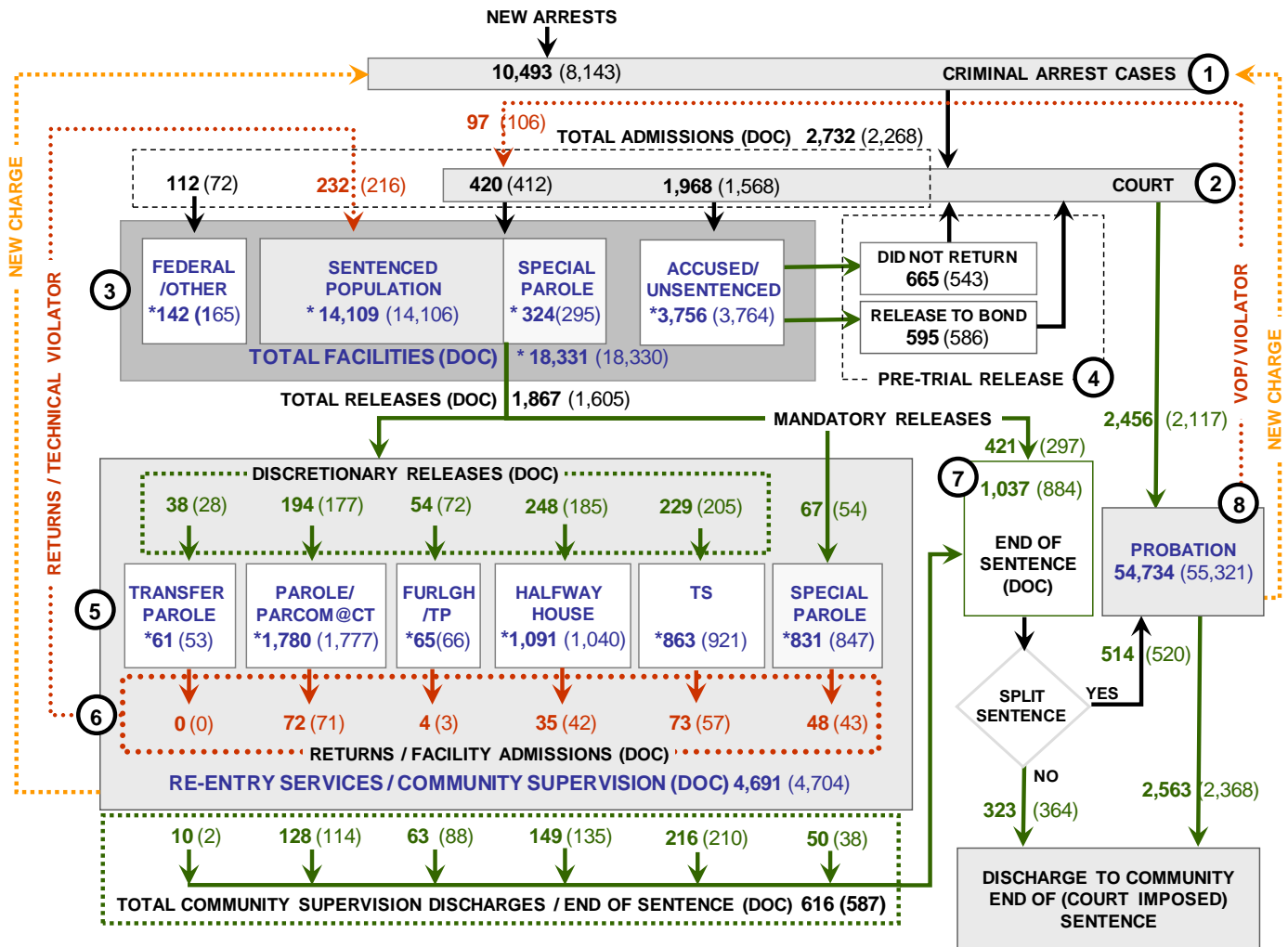


CHART 2 – Connecticut Criminal Justice System – Monthly Overview



Asterisks (*) indicate the single-day population count on April 1, 2010.
 Numbers enclosed by parentheses contain the figure for the previous month.
 Data shown for New Split Sentence Probationers is only approximate due to data reconciliation difficulties.
 Sources: Arrest-Judicial/Court Operations; Court-Judicial/CSSD; Facility/Community Supervision-DOC

Unlike states that have county governments, the majority of agencies within Connecticut's criminal justice system are State agencies. The one exception is law enforcement, where there are over 90 local police departments and the Connecticut State Police.

- 1) Arrest:** An individual enters into the criminal justice system at the time of arrest.
- 2) Court:** At arraignment, judges review the charges filed against the accused and set a bail amount. Individuals who cannot meet bail conditions are incarcerated in DOC facilities to await trial. If the defendant is convicted, they may be sentenced to a range of sanctions including a fine, probation, or a term of incarceration.
- 3) DOC Facilities:** Total facility population at DOC contains the unsentenced population, which is awaiting trial, the sentenced population, inmates who have returned from special parole, and offenders charged in federal cases or non-state cases.
- 4) Pre-Trial Release:** Some defendants who are incarcerated pending the disposition of their cases may be eligible for a bond reduction or placement into pre-trial diversionary programs or treatment programs. These programs feature close coordination and cooperation between DOC, CSSD and the Department of Mental Health and Addiction Services (DMHAS).
- 5) Re-Entry Services:** Depending on several factors, an inmate may be eligible to complete a portion of his/her prison sentence under supervision of the DOC's Parole and Community Services Unit. Non-violent Inmates with sentences shorter than two years are eligible for Transitional Supervision after serving 50% of their sentences. Inmates serving sentences longer than two years may be eligible for parole.
- 6) Returns:** Offenders who violate the conditions of their community release may be returned to prison to complete the remainder of their sentences.
- 7) End of Sentence (EOS):** At the end of their sentences some offenders are required to complete a period of post-release supervision. Split-sentence offenders are supervised by the Judicial Branch's Office of Adult Probation. Offenders sentenced to special parole remain under DOC supervision.
- 8) Violation of Probation:** If an individual violates the terms of their probation, an arrest warrant must be issued, and the violator's case is returned to court.

TABLE 2 –DOC Population Counts, First of the Month

	2010			2009	% Change	
	Feb. 1st	Mar. 1st	Apr. 1st	Apr. 1st	Monthly	Annual
DOC Facility						
Federal/Other	162	165	142	138	-16.2%	2.9%
Sentenced	14,105	14,106	14109	14,914	0.0%	-5.4%
Special Parole	294	295	324	279	9.0%	16.1%
Accused/Unsentenced	3,822	3,764	3756	3,738	-0.2%	0.5%
Total	18,383	18,330	18,331	19,069	0.0%	-3.9%
DOC Community						
Transfer Parole	47	53	61	70	13.1%	-12.9%
Parole/ Parcom Total	1,780	1,777	1,780	1,427	0.2%	24.7%
Parole	1,637	1,628	1,628	1,273	0.0%	27.9%
Parcom @ CT	143	149	152	154	2.0%	-1.3%
Furlgh/Trans Place Total	78	66	65	33	-1.5%	97.0%
Furlough	54	41	43	0	4.7%	-
Trans Placement	24	25	22	33	-13.6%	-33.3%
Halfway House Total	1,029	1,040	1,091	1,202	4.7%	-9.2%
Comm Release	873	864	905	908	4.5%	-0.3%
TS	20	23	21	159	-9.5%	-86.8%
Parole	69	87	98	79	11.2%	24.1%
Transfer Placement	0	0	0	0	-	-
Special Parole	67	66	67	56	1.5%	19.6%
TS Total	972	921	863	928	-6.7%	-7.0%
Special Parole	859	847	831	803	-1.9%	3.5%
Total	4,765	4,704	4,691	4,463	-0.3%	5.1%

TABLE 3 – DOC Admissions and Releases, Monthly Totals

	2010			2009	% Change	
	Jan.	Feb.	Mar.	Mar.	Monthly	Annual
Admissions						
Federal/Other	100	72	112	130	55.6%	-13.8%
Returns	218	216	232	258	7.4%	-10.1%
Transfer Parole	2	0	0	2	-	-
Parole	76	71	72	61	1.4%	18.0%
Trans Plac/Furlough	5	3	4	7	33.3%	-
HWH	37	42	35	47	-16.7%	-25.5%
TS	54	57	73	87	28.1%	-16.1%
Special Parole	44	43	48	54	11.6%	-11.1%
New Sentence	626	412	420	476	1.9%	-11.8%
VOP	146	106	97	138	-8.5%	-29.7%
Accused	1,774	1,568	1,968	2,061	25.5%	-4.5%
Total	2,718	2,268	2,732	2,925	20.5%	-6.6%
Releases						
Transfer Parole	34	28	38	21	35.7%	81.0%
Parole	198	177	194	183	9.6%	6.0%
Trans Plac/Furlough	58	72	54	12	-25.0%	350.0%
HWH	219	185	248	227	34.1%	9.3%
TS	227	205	229	360	11.7%	-36.4%
Special Parole	75	54	67	64	24.1%	4.7%
End of Sentence	878	884	1,037	1,027	17.3%	1.0%
Total	1,689	1,605	1,867	1,894	16.3%	-1.4%
Pre-trial Releases*						
Did not return from Court	595	543	665	667	22.5%	-0.3%
Release to Bond	529	586	595	617	1.5%	-3.6%

*Measured by occurrence, not by individual.

Parole

Paroles Granted During December: 197

The Board considered 271 parole cases at full panel hearings during March. In 197 cases, offenders were granted parole dates; in 74 cases, parole was denied. In addition there were 75 parole violation hearings, resulting in 49 re-paroles (35 revocations and 14 rescissions).

TABLE 4A –Paroles Granted, March 2010

	Hearings	Granted	Rate
JAN 2010	209	143	68%
FEB	249	187	75%
MAR	271	197	73%

Data Notes: Figures are based on the data available at the time of this report. Data in subsequent issues may not agree.

The Board is moving towards scheduling dates for parole hearing up to 18 months before an offender's eligibility date. This should allow the Board to have a greater effect on offender programming while the offender remains incarcerated. It should also provide DOC with more time to develop a successful reintegration plan for each offender. If properly implemented, this change should reduce the number of offenders that are incarcerated beyond their parole eligibility dates.

Transfer Parole Approval Rate: 25%.

TABLE 4B –Transfer Paroles, March 2010

	Reviewed	Granted	Denied	Continued	Rate
JAN '10	180	32	81	67	18%
FEB	275	73	135	67	27%
MAR	283	72	146	65	25%

Probation

Total Court Support Services Division caseload for March 2010: 54,734

TABLE 5 – Monthly CSSD Direct Sentenced & Probationer Community Placements

	Community Based	Out-patient	Inpatient/Resident	Total
DEC	1,458	1,026	32	2,516
JAN '10	1,447	1,043	15	2,505
FEB	1232	984	22	2,238

Data Notes: Figures are based on the latest data available at publication time. Figures in subsequent issues may not agree with those published here.

Pre-trial Diversion and Supervision

TABLE 6 – Pre-trial Diversion & Supervision

	Pre-trial Bail Case Starts	Client Supv. Starts
JAN '10	2,600	2,424
FEB	2,273	2,117
MAR	2,997	2,456

CHART 3 – Snapshot Daily DOC Facility Population
April 1, 2010 to April 7, 2010

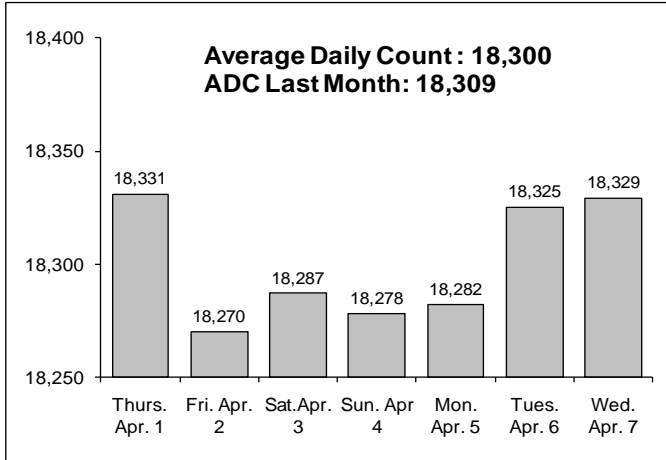


CHART 6 – Monthly DOC Admissions by Type
March 2009 to March 2010

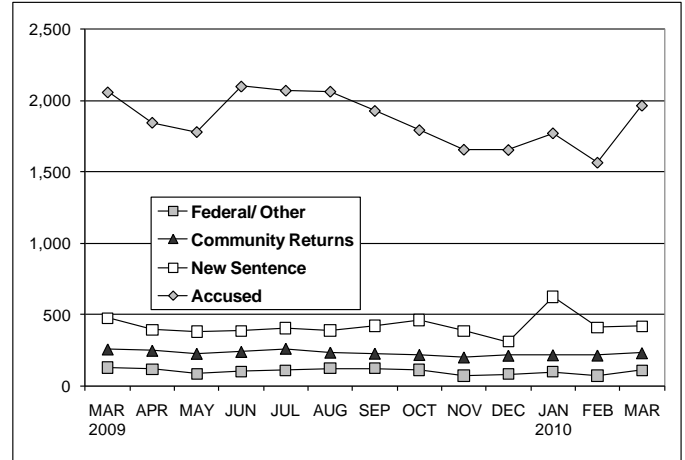


CHART 4 – Monthly Prison Population
January 1 through December 1, Calendar Year

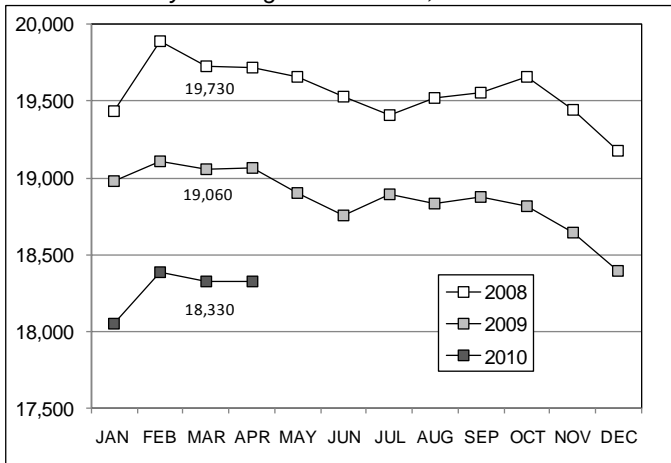


CHART 7 – Readmissions from Community Release
March 2010

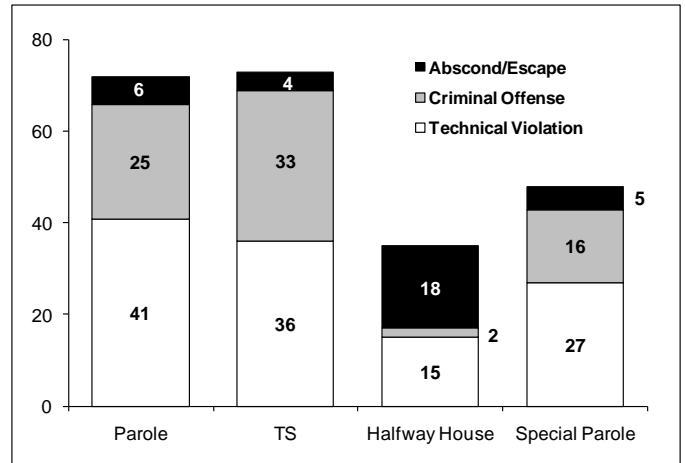


CHART 5 – Monthly criminal arrests, statewide
January 2009 to March 2010

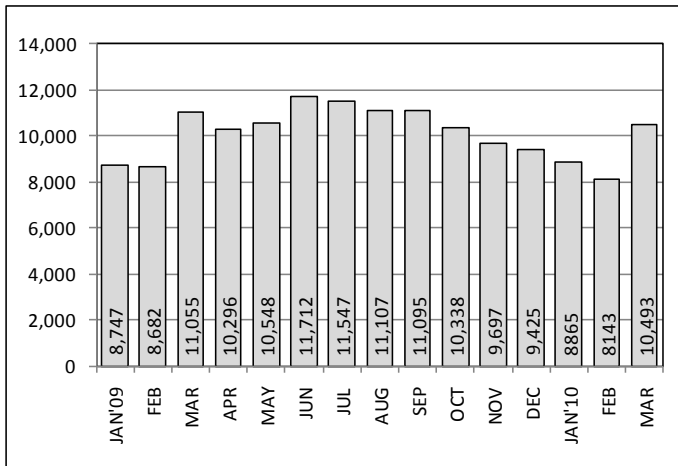
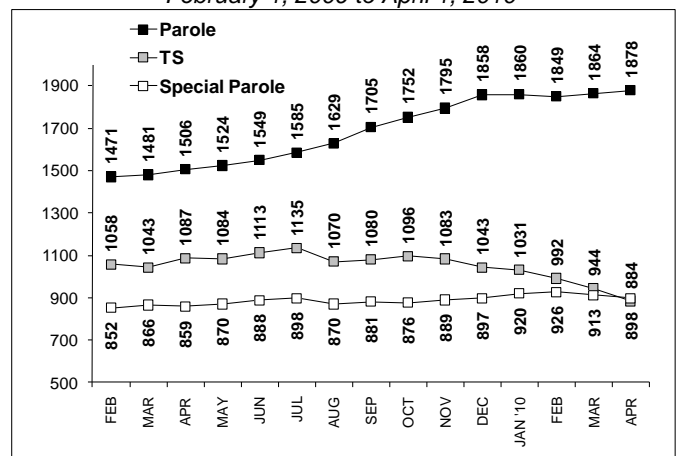


CHART 8 – Parole, TS and Special Parole, supervised cases
February 1, 2009 to April 1, 2010



* Data for all charts except Chart 5 was supplied by CT DOC
Data for Chart 5 was provided by Court operations at the Judicial Branch
**Data in Chart 8 include all offenders under parole jurisdiction