



Criminal Justice Policy & Planning Division

Monthly Indicators Report

RESEARCH, ANALYSIS & EVALUATION — WWW.CT.GOV/OPM/CriminalJustice/Research

Highlights

- The DOC facility population on March 1, 2009 was 19,060. At the same time last year, the facility population was 19,730.
- In a typical year, the Connecticut prison population shows a moderate decrease during the month of February and this year was no exception. Between February 1 and March 1, the prison population declined by 47 inmates.
- In February, OPM estimated that the prison population for March would be 19,095. The average prison population for the first week in March was **19,053***. This is the 5th straight month in which the actual prison population fell below forecast figures.
- In the February 2009 issue of the *Monthly Indicators Report*, CJPPD estimated that the DOC facility population over the next 12 months is expected to fluctuate between 18,600 and 19,200. In coming issues, we will continue to compare these estimates against the actual figures in CHART 1.
- The number of parole cases heard by the Board of Pardons and Parole in February jumped by 20% over the January figure. (See Table 4A)

Last month, CJPPD published its *2009 Connecticut Recidivism Study*. The study followed 16,486 sentenced offenders released or discharged from a DOC facility in 2004. The study tracked four measures of recidivism during the three year period following an offender's release from prison consistent with U.S. Department of Justice, Bureau of Justice Statistics methodology. These four measures include: 1) new arrests 2) new convictions 3) any incidence of reincarceration, and 4) returns to prison with a new sentence. In addition, a detailed analysis of recidivism rates for select groups is provided. The report is available on the CJPPD Research website listed above.

Six Month Prison Population

OPM's Criminal Justice Policy and Planning Division (CJPPD) currently projects that the state's inmate population will remain relatively stable over the next six-months. It is anticipated that the prison population will dip below 19,000 in May before gradually rebounding in the late-summer as the number of criminal arrests tends to increase.

TABLE 1 – 6-Month Prison Population Forecast

	2009 Actual (*Avg Daily)	6 Month Population Forecast	Difference Actual vs. Projected	% Diff
MAR	19,053*	19,095	-42	-0.2%
APR	-	19,023	-	-
MAY	-	18,849	-	-
JUN	-	18,866	-	-
JUL	-	18,913	-	-
AUG	-	18,937	-	-
SEP	-	19,070	-	-

Several factors may impact the monthly projection.

The legislature is currently reviewing legislation that could re-instate the re-entry furlough program and reinstitute some form of discretionary "good-time" credit. Either of these changes could result in a reduction of the prison population by several hundred inmates.

Over the past few months, the Board of Pardons and Paroles has increased the number of parole hearings that are held around the state. As a result, the number of offenders released to parole, on a monthly basis, has also gradually increased. If current trends continue, the size of the parole-eligible population that is currently incarcerated should show modest declines.

Finally, as the economy worsens, it is possible that fewer accused offenders may be able to meet their bail requirements. If this happen, more pressure will certainly be placed on existing prison-diversion programs. If these programs are unable to adjust to the increased demand, the accused population in the state prisons may increase.

CHART 1 – Total DOC Facility Population, Actual and Projected
March 1, 2007 to February 1, 2010

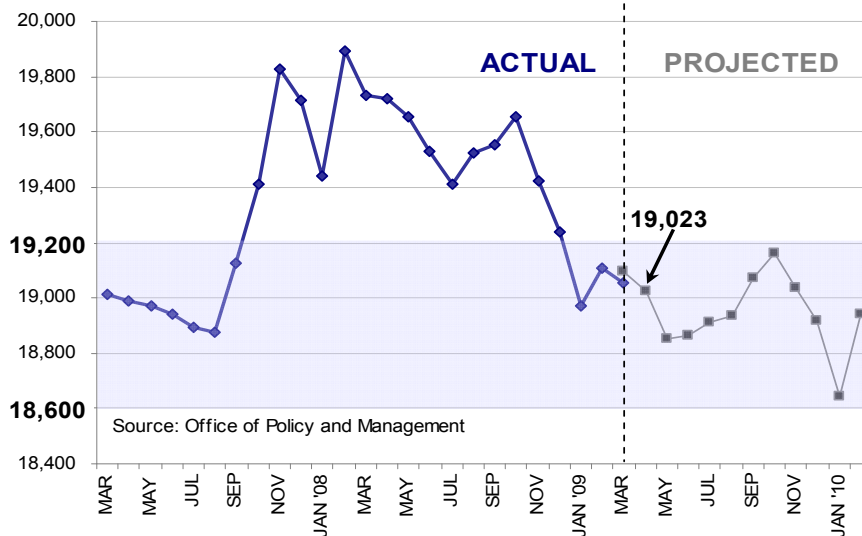
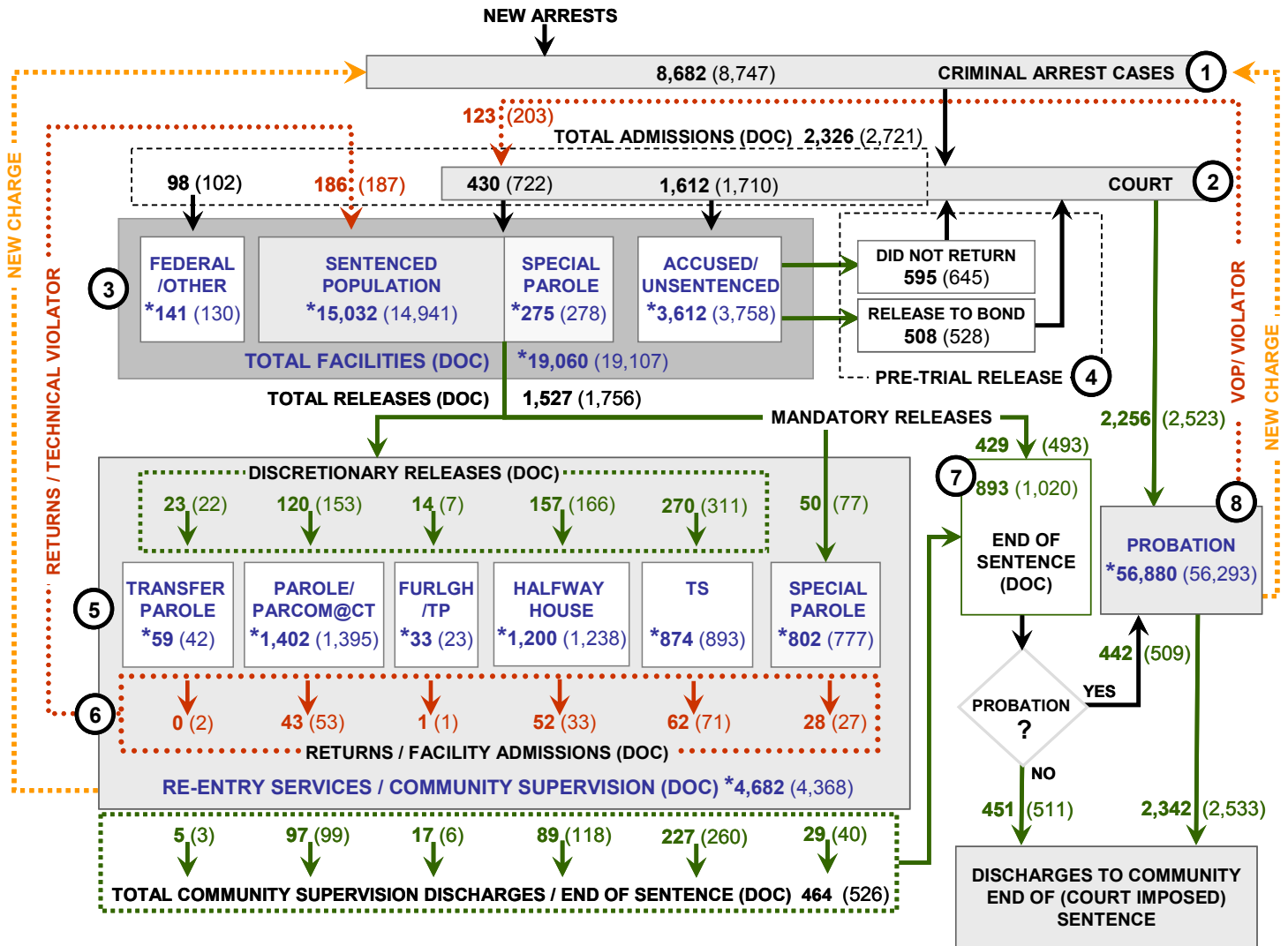


CHART 2 – Connecticut Criminal Justice System Overview



Asterisks (*) indicate single-day, snapshots of population count on March 1, 2009.
 Numbers enclosed by parentheses contain figures for the previous month.
 Data shown for New Split Sentence Probationer is only approximate due to processing difficulties.
 Sources: Arrest-Judicial/Court Operations; Court-Judicial/CSSD; Facility/Community Supervision-DOC

Unlike states that have county governments, the majority of agencies within Connecticut's criminal justice system are State agencies. The one exception is law enforcement, where there are over 90 local police departments and the Connecticut State Police.

- 1) Arrest:** An individual enters into the criminal justice system at the time of arrest.
- 2) Court:** During arraignment, judges review the charges filed against the accused and set a bail amount. Individuals who cannot meet the conditions of bail are placed in DOC facilities to await trial. If the defendant is convicted they may be sentenced to serve a period of probation, a term of incarceration or some other sanction.
- 3) DOC Facilities:** Total facility population at DOC contains the unsentenced population, which is awaiting trial, the sentenced population, inmates on special parole, and individuals charged in federal cases or non-state cases.
- 4) Pre-Trial Release:** Some defendants who are incarcerated pending the disposition of their cases may be eligible for a bond reduction or placement into pre-trial diversionary programs or treatment programs. These programs feature close coordination and cooperation between DOC, CSSD and the Department of Mental Health and Addiction Services (DMHAS).
- 5) Re-Entry Services:** Depending on several factors, an inmate may be eligible to complete a portion of his/her prison sentences under supervision of the DOC's Parole and Community Services Unit. Non-violent Inmates with sentences shorter than two years are eligible for Transitional Supervision after serving 50% of their sentences. Inmates serving sentences longer than two years may be eligible for parole.
- 6) Returns:** Offenders who violate the conditions of their community release may be returned to prison to serve out the remainder of their sentences.
- 7) End of Sentence:** At the end of their sentences some offenders are required to complete a period of post-release supervision. Split-sentence offenders enter probation where they are monitored by CSSD personnel. Offenders sentenced to special parole remain under DOC supervision.
- 8) Violation of Probation:** If an individual violates the terms of their probation, an arrest warrant is issued and the violator is returned to court.

TABLE 2 – Snapshot of Month DOC Population Counts

	2009			2008	% Change	
	Jan 1st	Feb 1st	Mar 1st	Mar 1st	Monthly	Annual
DOC Facility						
Federal/Other	135	130	141	171	8.5%	-17.5%
Sentenced	14,745	14,941	15,032	15,408	0.6%	-2.4%
Special Parole	310	278	275	404	-1.1%	-31.9%
Accused/Unsentenced	3,788	3,758	3,612	3,747	-3.9%	-3.6%
Total	18,978	19,107	19,060	19,730	-0.2%	-3.4%
DOC Community						
Transfer Parole	37	42	59	30	40.5%	96.7%
Parole/ Parcom Total	1,361	1,395	1,402	1,288	0.5%	8.9%
Parole	1,197	1,232	1,237	1,132	0.4%	9.3%
Parcom @ CT	164	163	165	156	1.2%	5.8%
Furlgh/Trans Place Total	19	23	33	0	43.5%	
Furlough	0	0	0	0		
Trans Placement	19	23	33	0	43.5%	
Halfway House Total	1,227	1,238	1,200	1,118	-3.1%	7.3%
Comm Release	927	924	888	901	-3.9%	-1.4%
TS	165	161	169	118	5.0%	43.2%
Parole	79	78	77	57	-1.3%	35.1%
Transfer Parole	0	0	0	3		-100.0%
Special Parole	56	75	64	39	-14.7%	64.1%
TS Total	900	893	874	939	-2.1%	-6.9%
Special Parole	759	777	802	665	3.2%	20.6%
Total	4,303	4,368	4,370	3,884	0.0%	12.5%

TABLE 3 – Total DOC Admissions and Releases by Month

	2009			2008	% Change	
	Dec	Jan	Feb	Feb	Monthly	Annual
Admissions						
Federal/Other	104	102	98	113	-3.9%	-13.3%
Returns	206	187	186	181	-0.5%	2.8%
Transfer Parole	1	2	-	2	-100.0%	-100.0%
Parole	64	53	43	41	-18.9%	4.9%
Trans Plac/Furlough	-	1	1	3	0.0%	-66.7%
HWH	35	33	52	45	57.6%	15.6%
TS	82	71	62	61	-12.7%	1.6%
Special Parole	24	27	28	32	3.7%	-12.5%
New Sentence	287	722	430	431	-40.4%	-0.2%
VOP	81	203	123	87	-39.4%	41.4%
Accused	1,891	1,710	1,612	1,660	-5.7%	-2.9%
Total	2,488	2,721	2,326	2,385	-14.5%	-2.5%
Releases						
Transfer Parole	13	22	23	2	4.5%	1050.0%
Parole	131	153	120	124	-21.6%	-3.2%
Trans Plac/Furlough	13	7	14	-	100.0%	
HWH	175	166	157	155	-5.4%	1.3%
TS	324	311	270	335	-13.2%	-19.4%
Special Parole	47	77	50	61	-35.1%	-18.0%
End of Sentence	1,034	1,020	893	940	-12.5%	-5.0%
Total	1,737	1,756	1,738	1,617	-1.0%	7.5%
Pre-trial Releases*						
Release to Bond	587	528	508	-	-10.1%	-
Did not return from Court	662	645	595	-	-2.6%	-

*Measured on incidents and not by individuals.

Parole

Paroles Granted During February 2009:

During February 2009, the Board conducted 22 full-panel hearings to consider 282 parole applicants; 237 were granted parole dates and 45 were denied. In addition, 4 hearings were conducted for 75 cases involving violations of which 59 cases were granted a new parole date.

TABLE 4A – Monthly Parole Granting Rate

	Hearings	Granted	Rate
DEC	272	230	85%
JAN	234	211	90%
FEB	282	237	84%

Data Notes: Figures are based on actual data available at the time of this report. Subsequent reports may not agree.

Parole hearings are typically held six months prior to an offender's parole eligibility date. An offender may be released to parole on their first eligibility date or a later date. As a result, the time between parole being granted and the offender being released may take much longer than six months.

Transfer Parole Rates: In February, 153 cases were reviewed for transfer parole. Of these cases 30 were approved, 77 were denied, and 46 were continued.

TABLE 4B – Monthly Transfer Paroles Granted

	Reviewed	Granted	Denied	Continued	Rate
DEC	160	32	70	58	20.0%
JAN	199	47	60	92	23.6%
FEB	153	30	77	46	19.6%

Probation

Total number sentenced offenders placed on probation in January was 2,256 (See Chart 2).

TABLE 5 – Monthly CSSD Direct Sentenced & Probationer Community Placements

	Community Based	Out-Patient	Inpatient/ Resident	Total
NOV	1,093	713	32	1,838
DEC	1,031	742	29	1,802
JAN	1,046	843	35	1,924

Data Notes: February 2009 data for Community Placements was not available at the time of this report. Figures are based on data available at the time of this report. Subsequent reports of actual figures may not agree.

Pre-trial Diversion Supervision

Total number of offenders released to Pre-trial Diversion/Supervision: 2,494 inmates were released to pre-trial diversion in February. This figure includes offenders who were released from DOC facilities.

TABLE 6 – Pre-trial Diversion/Supervision

DEC	2,697
JAN	2,598
FEB	2,494

CHART 3 – Snapshot Daily DOC Facility Population
 March 1, 2009 to March 7, 2009

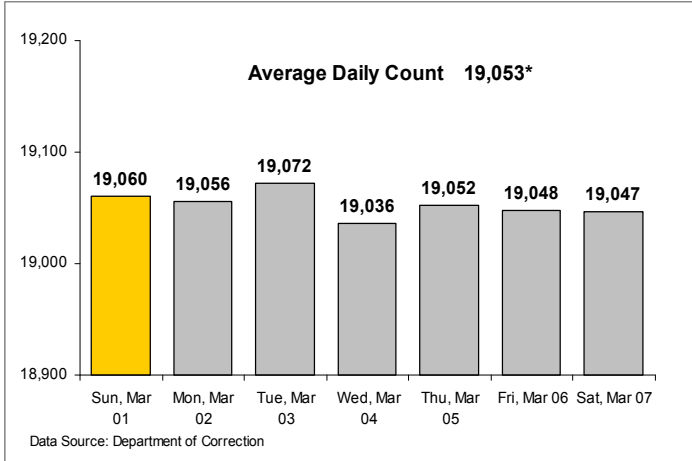


CHART 6 – Monthly DOC Admissions by Type
 March 2008 to February 2009

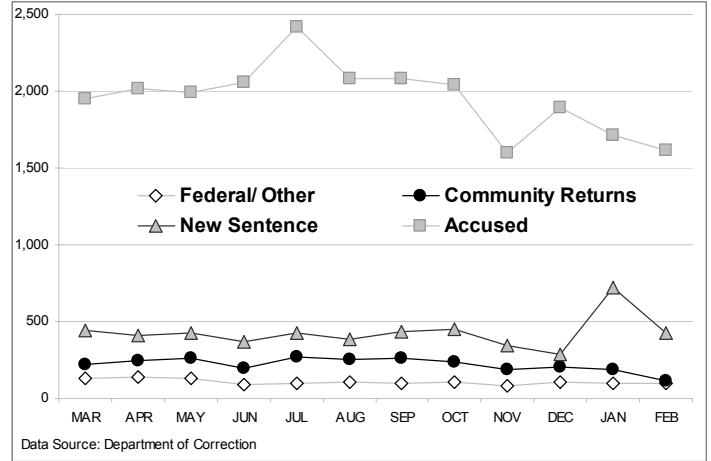


CHART 4 – Snapshot Monthly DOC Prison Population
 March 1, 2007 to March 1, 2009

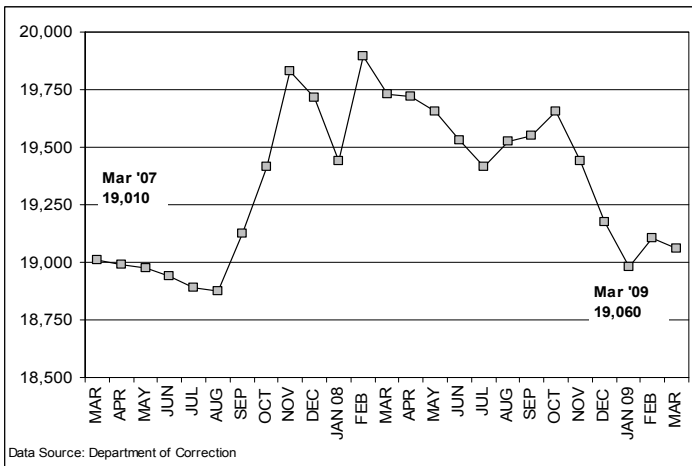


CHART 7 – Community Release Readmission Reasons
 February 2009

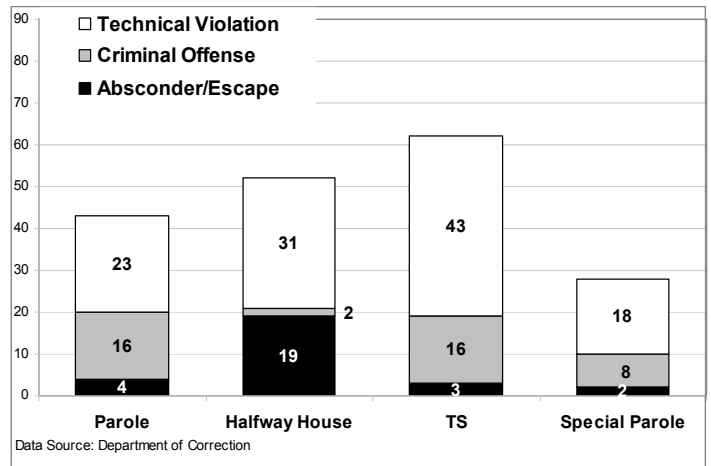


CHART 5 – Snapshot Prison Population, Percent Change
 From Prior Month (February/March) 1990 to 2009

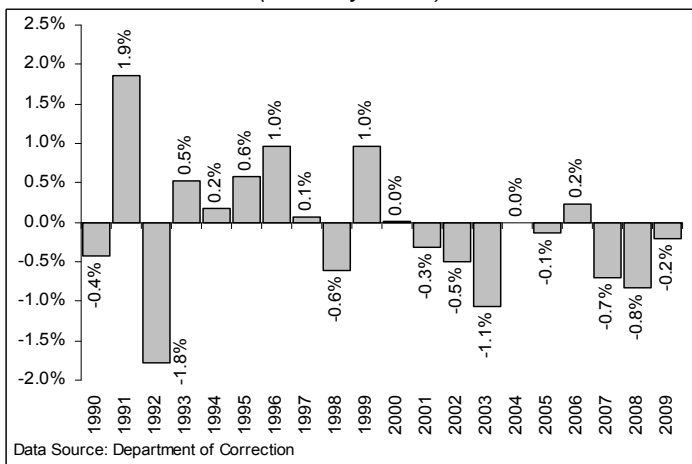


CHART 8 – Snapshot Monthly Parole, TS and Special Parole
 July 2007 to March 2009

