

Criminal Justice Policy & Planning Division Monthly Indicators Report



RESEARCH, ANALYSIS & EVALUATION — WWW.CT.GOV/OPM/CriminalJustice/Research

Special thanks to our Criminal Justice partners for their contributions and without whom we could not produce these timely *Monthly Indicators Reports* each month.

- On January 1, 2009, the state's prison population fell well below last year's figures. At its peak on February 1st 2008, 19,894 people were incarcerated in Connecticut. (See Chart 4) By January 1, 2009, that figure had fallen to 18,978. As a result, inmate overflow areas at three DOC facilities have been closed.
- The state's prison population fluctuates on a daily basis over the course of each week reflecting changes in offender flows throughout the criminal justice system. During the first week of January, the daily prison population ranged from 18,917 to 19,073. The average daily count for the first week of January was 18,971* (See Chart 3).
- The prison population shrank by 198 inmates between December 1 and January 1. Although inmate admits increased by 270 over the month, an increase in releases and in the number of offenders moved into pre-trial, diversion programs lowered the overall population.
- The prison population in early January is at its lowest point since August 2007. Chart 4 illustrates how the prison population rose in the aftermath of the tragic events in Cheshire.
- The number of offenders released to parole increased this month, rising from 119 in November, to 131 in December. Given the days lost to holidays during December, the increase may reflect greater efficiency in moving offenders through the parole process.
- 206 offenders were returned to prison from community supervision programs during the month of December. Technical violations were the primary reason for the majority of these returns.

Six Month Prison Population

In October, OPM's Criminal Justice Policy & Planning Division produced two prison population projections. The first projection was based on historical trends and an input-output model of the state's prison population. The second projection adjusted OPM's initial population projection downwards to include an anticipated decrease in the prison population based on the BOPP's ability to reduce an almost year-long backlog of inmates awaiting parole.

According to DOC population figures, the number of inmates exiting DOC facilities for parole did not change substantially during the month of December. Nevertheless, the actual prison population has declined much further than originally projected. Over the next two months, the prison population will grow somewhat reflecting historical patterns. This rise will result in a prison population that is significantly lower than January and February figures for 2008.

CHART 1 – Prison Population Forecast, October 2008

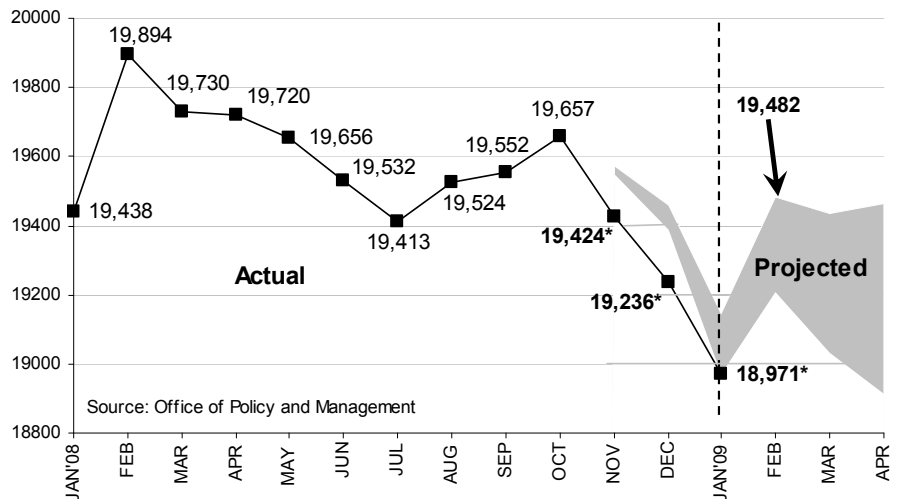
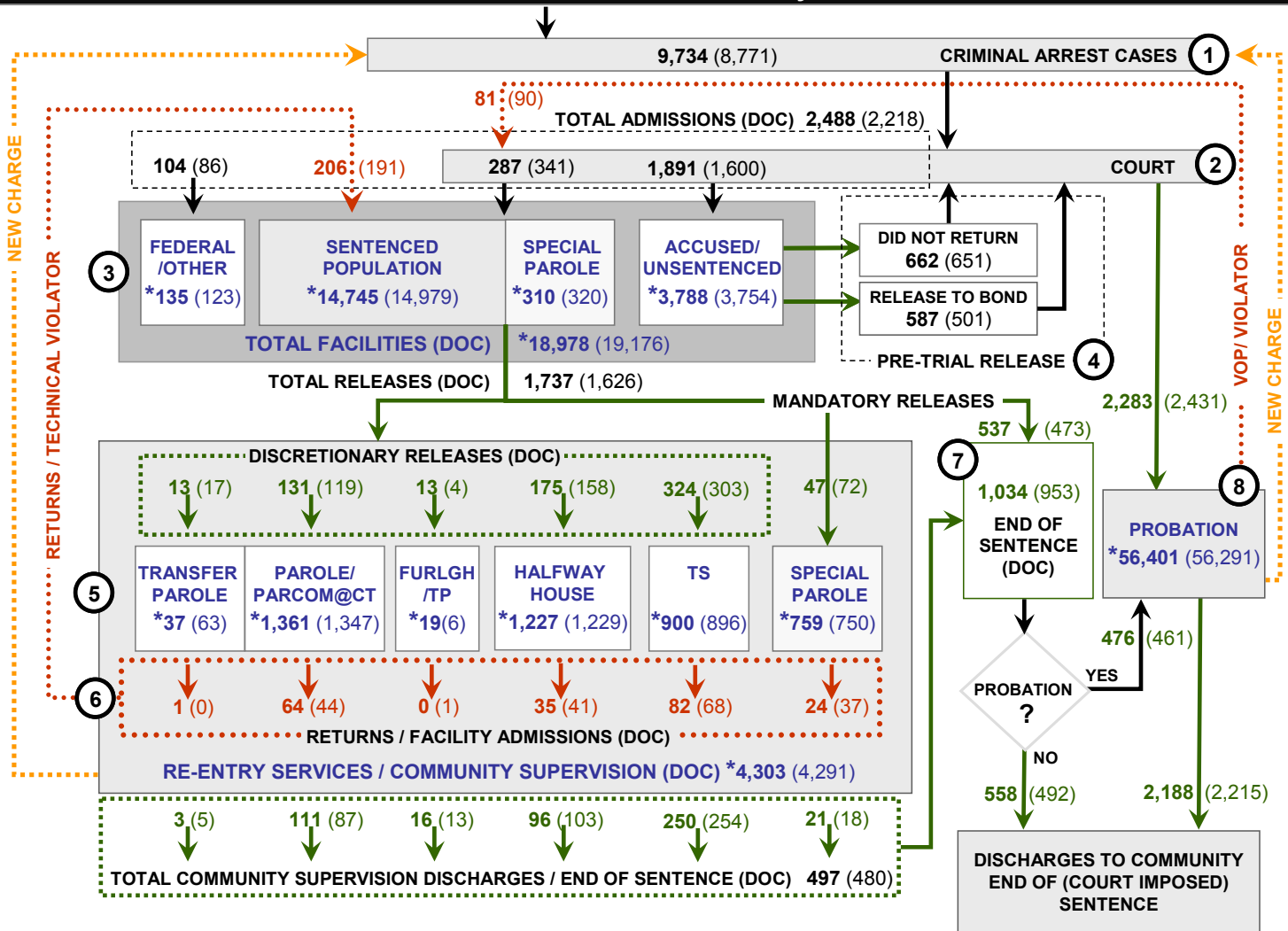


TABLE 1 – Prison Population Forecast

	2008 Actual (*Avg Daily)	6 Month Population Forecast	Potential Parole Releases	Forecast with Parole Releases	Difference Actual vs. Projected	% Diff
AUG	19,524	-	-	-		
SEP	19,552	-	-	-		
OCT	19,657	-	-	-		
NOV	19,424*	19,575	25	19,550	-151	-0.8%
DEC	19,236*	19,461	75	19,386	-225	-1.2%
JAN'09	18,971*	19,148	175	18,973	-177	-0.9%
FEB	-	19,482	275	19,207		
MAR	-	19,434	400	19,034		
APR	-	19,465	550	18,915		

NOTE: From this point forward, rather than adjusting our forecast each month to reflect the most recent actual prison population, we will prepare two six month forecasts based on system inputs/outputs and data provided by agency partners. Also, we are now calculating an average daily population count from the first 7 calendar days of the month to begin the forecast so as to take into account potentially significant day-of-the-week variations in admission and releases.

CHART 2 – Connecticut Criminal Justice System Overview



Asterisks (*) indicate single-day, snapshots of population count on January 1, 2009. Numbers enclosed by parentheses contain figures for the previous month. Data shown for New Split Sentence Probationer is only approximate due to processing difficulties. Sources: Arrest-Judicial/Court Operations; Court-Judicial/CSSD; Facility/Community Supervision-DOC

Unlike states that have county governments, the majority of agencies within Connecticut's criminal justice system are State agencies. The one exception is law enforcement, where there are over 90 local police departments and the Connecticut State Police.

- 1) Arrest:** An individual enters into the criminal justice system at the time of arrest.
- 2) Court:** During arraignment, judges review the charges filed against the accused and set a bail amount. Individuals who cannot meet the conditions of bail are placed in DOC facilities to await trial. If the defendant is convicted they may be sentenced to serve a period of probation, a term of incarceration or some other sanction.
- 3) DOC Facilities:** Total facility population at DOC contains the unsentenced population, which is awaiting trial, the sentenced population, inmates on special parole, and individuals charged in federal cases or non-state cases.
- 4) Pre-Trial Release:** Some defendants who are incarcerated pending the disposition of their cases may be eligible for a bond reduction or placement into pre-trial diversionary programs or treatment programs. These programs feature close coordination and cooperation between DOC, CSSD and the Department of Mental Health and Addiction Services (DMHAS).
- 5) Re-Entry Services:** Depending on several factors, an inmate may be eligible to complete a portion of his/her prison sentences under supervision of the DOC's Parole and Community Services Unit. Non-violent Inmates with sentences shorter than two years are eligible for Transitional Supervision after serving 50% of their sentences. Inmates serving sentences longer than two years may be eligible for parole.
- 6) Returns:** Offenders who violate the conditions of their community release may be returned to prison to serve out the remainder of their sentences.
- 7) End of Sentence:** At the end of their sentences some offenders are required to complete a period of post-release supervision. Split-sentence offenders enter probation where they are monitored by CSSD personnel. Offenders sentenced to special parole remain under DOC supervision.
- 8) Violation of Probation:** If an individual violates the terms of their probation, an arrest warrant is issued and the violator is returned to court.

TABLE 2 – Snapshot of Month DOC Population Counts

	2009			2008	% Change	
	Nov 1st	Dec 1st	Jan 1st	Jan 1st	Monthly	Annual
DOC Facility						
Federal/Other	134	123	135	199	9.8%	-32.2%
Sentenced	15,042	14,979	14,745	14,998	-1.6%	-1.7%
Special Parole	341	320	310	388	-3.1%	-20.1%
Accused/Unsentenced	3,924	3,754	3,788	3,853	0.9%	-1.7%
Total	19,441	19,176	18,978	19,438	-1.0%	-2.4%
DOC Community						
Transfer Parole	65	63	37	33	-41.3%	12.1%
Parole/ Parcom Total	1,344	1,347	1361	1,311	1.0%	3.8%
Parole	1,182	1,184	1197	1,153	1.1%	3.8%
Parcom @ CT	162	163	164	158	0.6%	3.8%
Furlgh/Trans Place Total	1	6	19	97	N/A	-80.4%
Furlough	-	-	-	97	-	N/A
Trans Placement	1	6	19	-	N/A	N/A
Halfway House Total	1,228	1,229	1227	1,086	-0.2%	13.0%
Comm Release	944	928	927	887	-0.1%	4.5%
TS	159	168	165	88	-1.8%	87.5%
Parole	74	77	79	67	2.6%	17.9%
Transfer Parole	1	1	0	3	N/A	N/A
Special Parole	50	55	56	41	1.8%	36.6%
TS Total	903	896	900	871	0.4%	3.3%
Special Parole	723	750	759	635	1.2%	19.5%
Total	4,264	4,291	4,303	4,033	0.3%	6.7%

TABLE 3 – Total DOC Admissions and Releases by Month

	2008			2007	% Change	
	Oct	Nov	Dec	Dec	Monthly	Annual
Admissions						
Federal/Other	106	86	104	129	20.9%	-19.4%
Returns	239	191	206	186	7.9%	10.8%
Transfer Parole	-	-	1	-	N/A	N/A
Parole	51	44	64	45	45.5%	42.2%
Trans Plac/Furlough	-	1	-	3	-	N/A
HWH	52	41	35	33	-14.6%	6.1%
TS	94	68	82	82	20.6%	0.0%
Special Parole	42	37	24	23	-35.1%	4.3%
New Sentence	449	341	287	221	-15.8%	29.9%
VOP	133	90	81	48	-10.0%	68.8%
Accused	2,041	1,600	1,891	1,635	18.2%	15.7%
Total	2,835	2,218	2,488	2,171	12.2%	14.6%
Releases						
Transfer Parole	8	17	13	9	-23.5%	44.4%
Parole	136	119	131	67	10.1%	95.5%
Trans Plac/Furlough	1	4	13	157	225.0%	-91.7%
HWH	188	158	175	107	10.8%	63.6%
TS	349	303	324	171	6.9%	89.5%
Special Parole	68	72	47	42	-34.7%	11.9%
End of Sentence	1,128	953	1,034	944	8.5%	9.5%
Total	1,878	1,626	1,737	1,497	6.8%	16.0%
Pre-trial Releases*						
Release to Bond	645	501	587	-	17.2%	-
Did not return from Court	842	651	662	-	1.7%	-

*Measured on incidents and not by individuals.

Parole

Paroles Granted During December 2008: During December 2008, the Board conducted 272 full-panel hearings in which 230 applicants were granted parole. In addition, the Board heard 98 cases involving violations. In 73 cases, offenders were re-paroled.

TABLE 4A – Monthly Parole Granting Rate

	Hearings	Granted	Rate
OCT	262	218	83%
NOV	255	217	85%
DEC	272	230	85%

Parole hearings are typically held six months prior to an offender's parole eligibility date. An offender may be released to parole on their first eligibility date or a later date. As a result, the time between parole being granted and the offender being released may take much longer than six months.

Transfer Parole Rates: In December, 160 cases were reviewed for transfer parole. Of these cases 32 were approved, 70 were denied, and 58 were continued.

TABLE 4B – Monthly Transfer Paroles Granted

	Reviewed	Granted	Denied	Continued	Rate
OCT	135	25	74	36	18.5%
NOV	177	44	67	66	24.9%
DEC	160	32	70	58	20.0%

Probation

Total number of sentenced offenders placed on probation in December was 2,283 (See Chart 2).

TABLE 5 – Monthly CSSD Direct Sentenced & Probationer Community Placements

	Community Based	Out-patient	Inpatient/ Resident	Total
SEP	1077	802	43	1922
OCT	1089	754	30	1873
NOV	1093	713	32	1838

Data Notes: December 2008 data for Community Placements was not available at the time of this report. Figures are based on data available at the time of this report. Subsequent reports of actual figures may not agree.

Pre-trial Diversion Supervision

Total number of offenders released to Pre-trial Diversion/Supervision: 2,697 inmates were released to pre-trial diversion in December. This figure includes offenders who were released from DOC facilities.

TABLE 6 – Pre-trial Diversion/Supervision

OCT	2855
NOV	2377
DEC	2697

CHART 3 – Daily DOC Facility Population
January 1, 2009 to January 7, 2009

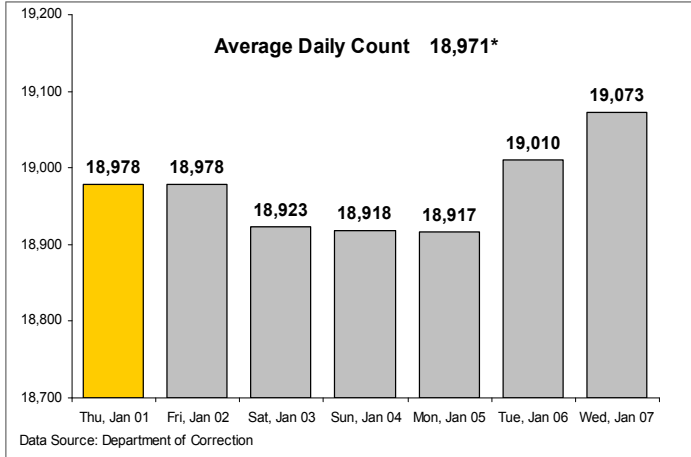


CHART 6 – Monthly DOC Admissions by Type
January 2008 to December 2008

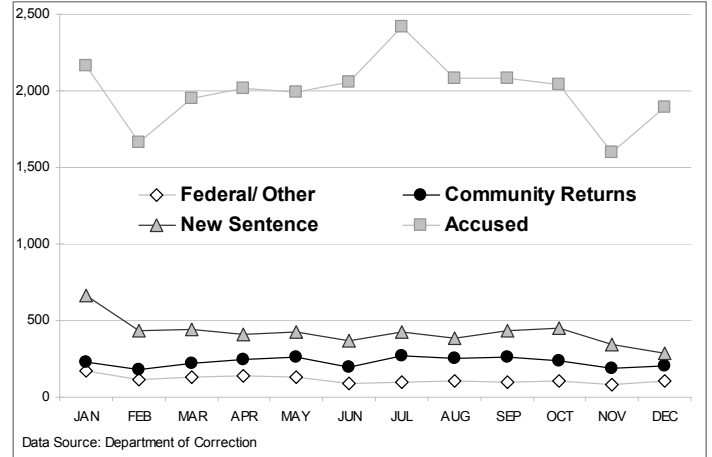


CHART 4 – Monthly DOC Prison Population
January 2007 to January 2009

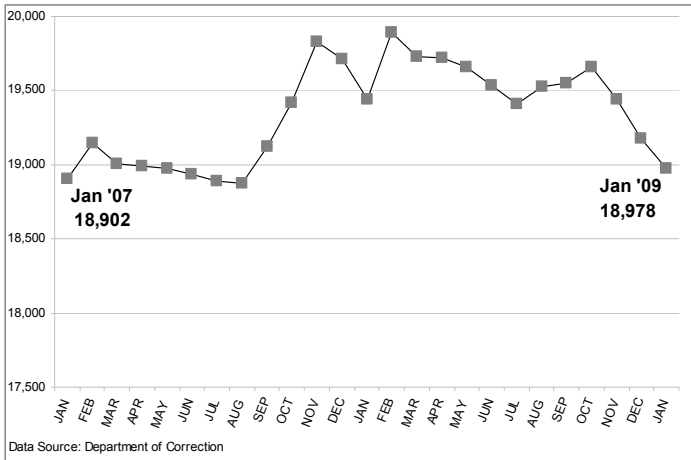


CHART 7 – Community Release Readmission Reasons
December 2008

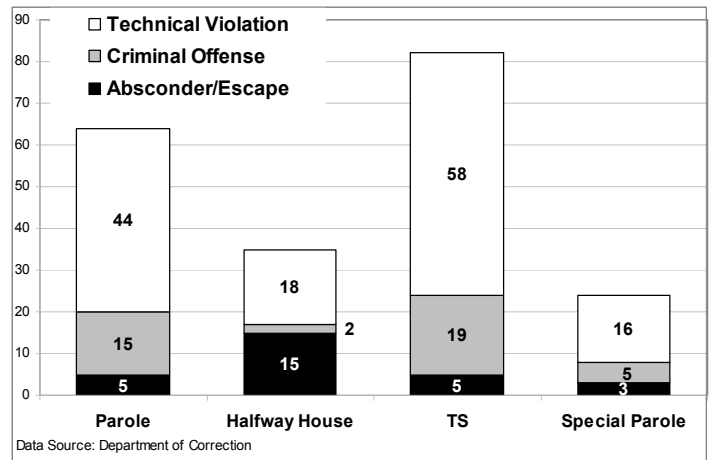


CHART 5 – New Sentence Admissions by Crime Type
December 2008

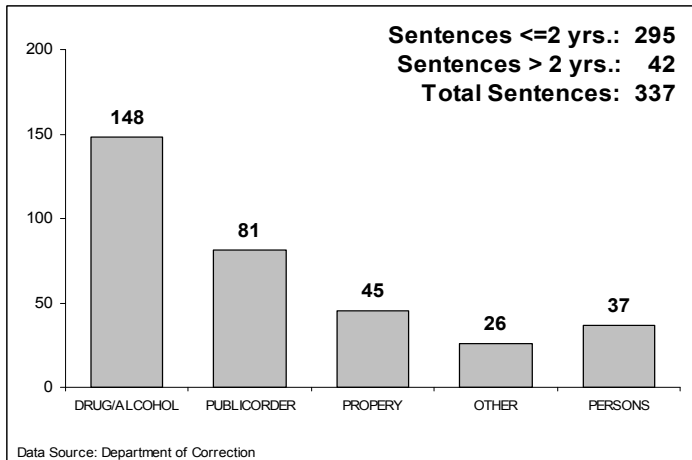


CHART 8 – Monthly Parole, TS and Special Parole
June 2007 to January 2009

