

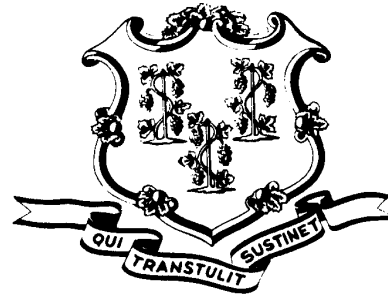
OFFICE OF POLICY & MANAGEMENT

Criminal Justice

Policy & Planning Division



2018 Prison population forecast and Annual recidivism report 2014 cohort

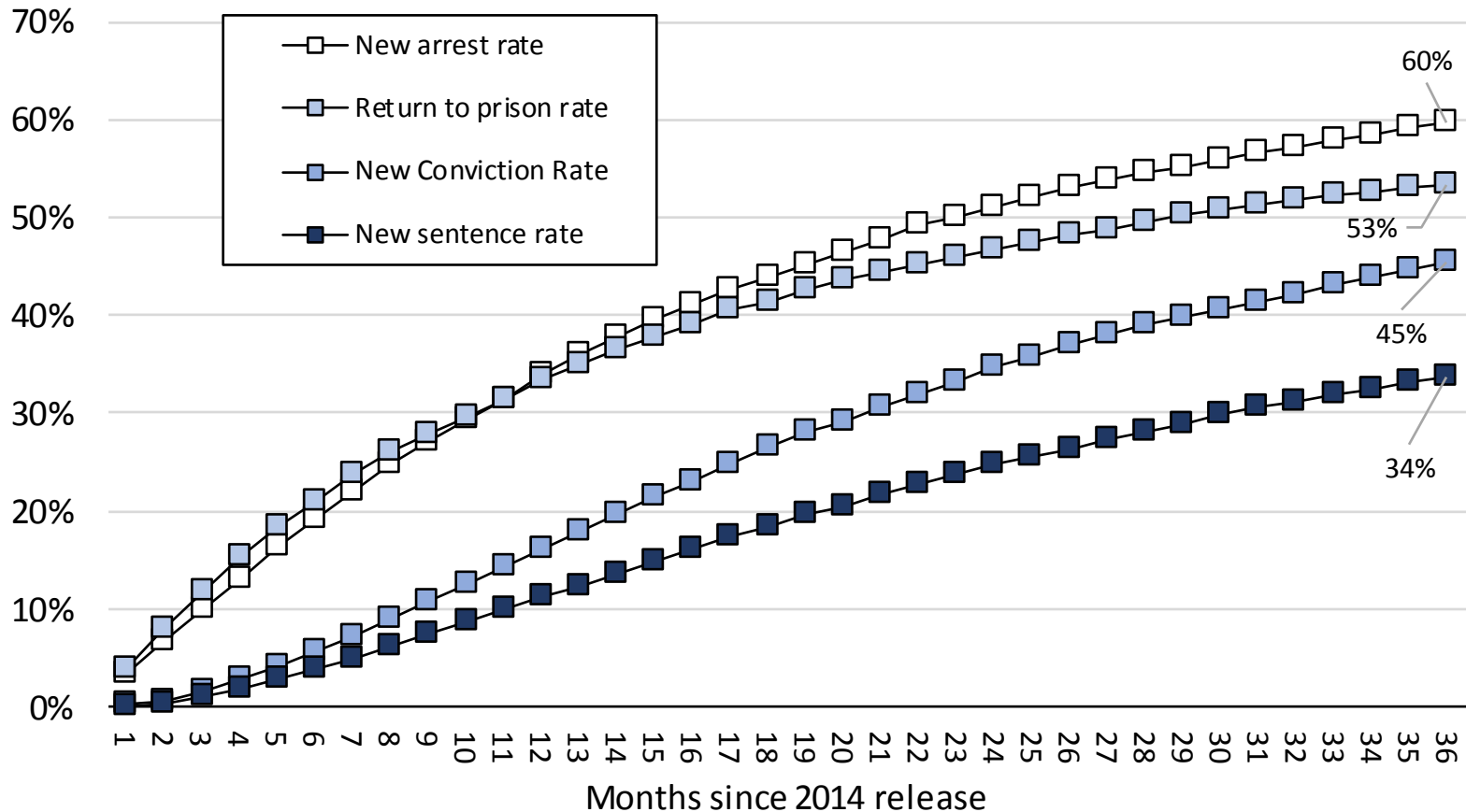


Presented

February 2018

Recidivism rates

3-year recidivism rates for offenders leaving prison in 2014



OPM tracked 11,245 sentenced offenders who were released or discharged in 2014.

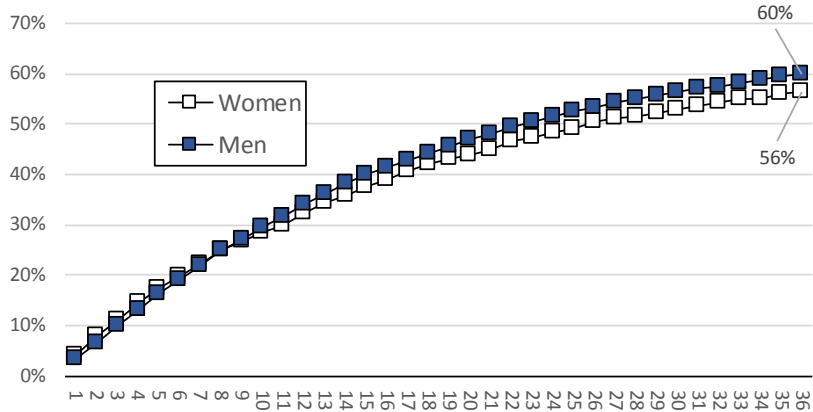
Recidivism rates

	New arrest rate	New conviction rate	Return-to-prison rate	New sentence rate
6 months	19%	6%	21%	4%
12 months	34%	16%	33%	11%
24 months	51%	35%	47%	25%
36 months	60%	45%	53%	34%

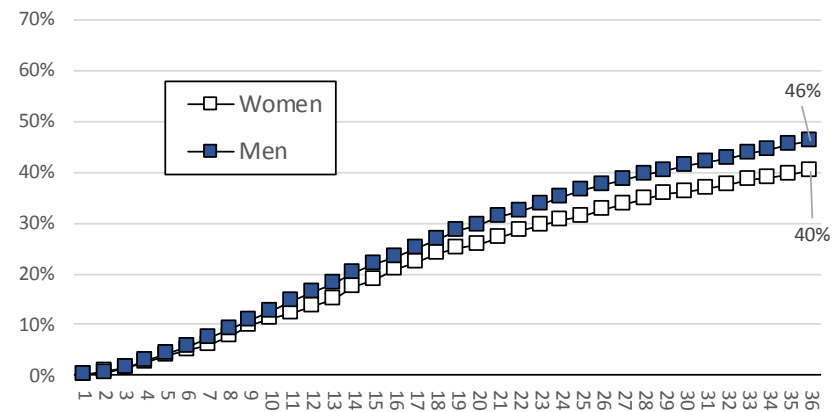
- **Offenders were tracked from their first release or discharge in 2014.**
- **Data was supplied by the Court Support Services Division, at Judicial and by CT DOC MIS Unit.**
- **Because the population of sentenced prisoners is non-homogenous, these overall rates provide only a limited perspective on recidivism rates among specific sub-groups of the population**

Recidivism rates and gender

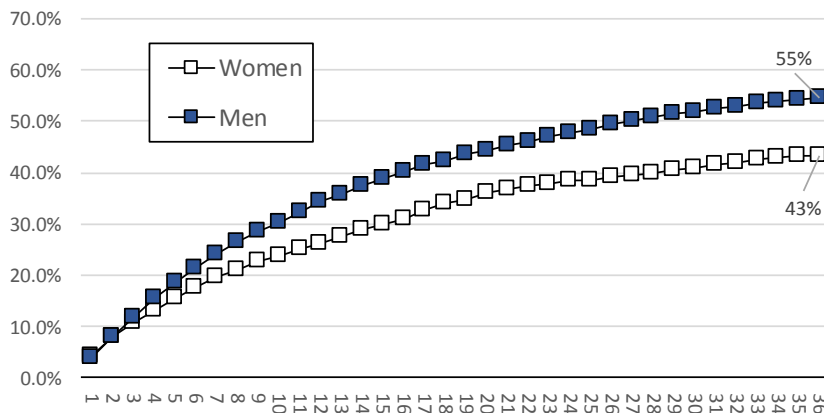
Recidivism, new arrests



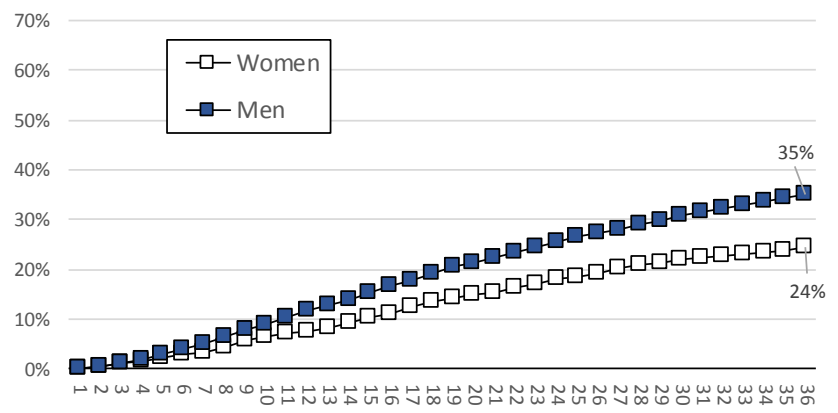
Recidivism, new conviction rates



Recidivism, return-to-prison



Recidivism - new sentence



Across all recidivism categories, male offenders performed worse than female offenders.

Recidivism rates, gender and age

Quintile	Male	New convictions	Conviction rate	New arrests	New arrest rate	RTP	RTP rate	New sentence	New sentence rate
Youngest	2058	1157	56.2%	1498	72.8%	1316	63.9%	896	43.5%
2nd Youngest	1841	919	49.9%	1184	64.3%	1054	57.3%	683	37.1%
Middle	2105	965	45.8%	1283	61.0%	1196	56.8%	741	35.2%
2nd oldest	1979	826	41.7%	1087	54.9%	1011	51.1%	617	31.2%
Oldest	1965	709	36.1%	918	46.7%	864	44.0%	534	27.2%
All men	9948	4576	46.0%	5970	60.0%	5441	54.7%	3471	34.9%
Quintile	Female	New convictions	Conviction rate	New arrests	New arrest rate	RTP	RTP rate	New sentence	New sentence rate
Youngest	268	124	46.3%	170	63.4%	132	49.3%	80	29.9%
2nd Youngest	240	121	50.4%	154	64.2%	117	48.8%	77	32.1%
Middle	274	108	39.4%	163	59.5%	132	48.2%	58	21.2%
2nd oldest	271	93	34.3%	136	50.2%	102	37.6%	55	20.3%
Oldest	244	76	31.1%	108	44.3%	80	32.8%	47	19.3%
All women	1297	522	40.2%	731	56.4%	563	43.4%	317	24.4%

- **Males recidivated at higher rates than females**

Recidivism rates, gender and age

Quintile	Male	New convictions	Conviction rate	New arrests	New arrest rate	RTP	RTP rate	New sentence	New sentence rate
Youngest	2058	1157	56.2%	1498	72.8%	1316	63.9%	896	43.5%
2nd Youngest	1841	919	49.9%	1184	64.3%	1054	57.3%	683	37.1%
Middle	2105	965	45.8%	1283	61.0%	1196	56.8%	741	35.2%
2nd oldest	1979	826	41.7%	1087	54.9%	1011	51.1%	617	31.2%
Oldest	1965	709	36.1%	918	46.7%	864	44.0%	534	27.2%
All men	9948	4576	46.0%	5970	60.0%	5441	54.7%	3471	34.9%
Quintile	Female	New convictions	Conviction rate	New arrests	New arrest rate	RTP	RTP rate	New sentence	New sentence rate
Youngest	268	124	46.3%	170	63.4%	132	49.3%	80	29.9%
2nd Youngest	240	121	50.4%	154	64.2%	117	48.8%	77	32.1%
Middle	274	108	39.4%	163	59.5%	132	48.2%	58	21.2%
2nd oldest	271	93	34.3%	136	50.2%	102	37.6%	55	20.3%
Oldest	244	76	31.1%	108	44.3%	80	32.8%	47	19.3%
All women	1297	522	40.2%	731	56.4%	563	43.4%	317	24.4%

- Among men, younger offenders recidivated at higher rates than older offenders

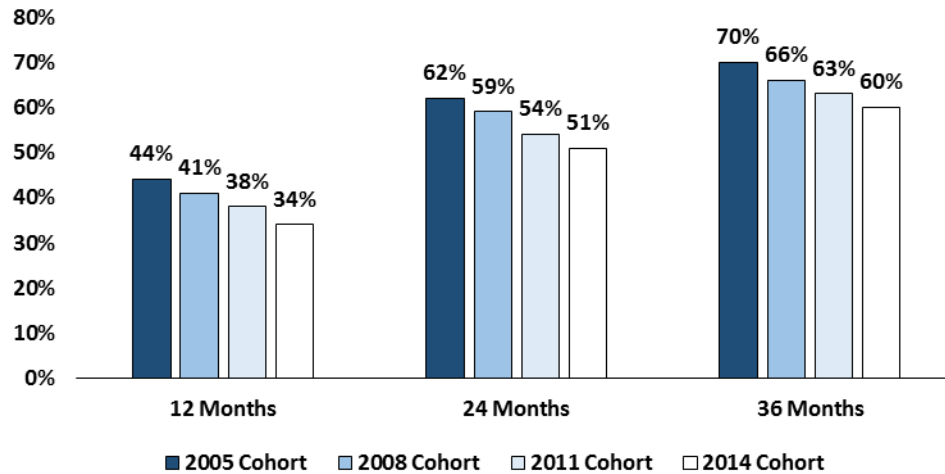
Recidivism rates, gender and age

Quintile	Male	New convictions	Conviction rate	New arrests	New arrest rate	RTP	RTP rate	New sentence	New sentence rate
Youngest	2058	1157	56.2%	1498	72.8%	1316	63.9%	896	43.5%
2nd Youngest	1841	919	49.9%	1184	64.3%	1054	57.3%	683	37.1%
Middle	2105	965	45.8%	1283	61.0%	1196	56.8%	741	35.2%
2nd oldest	1979	826	41.7%	1087	54.9%	1011	51.1%	617	31.2%
Oldest	1965	709	36.1%	918	46.7%	864	44.0%	534	27.2%
All men	9948	4576	46.0%	5970	60.0%	5441	54.7%	3471	34.9%
Quintile	Female	New convictions	Conviction rate	New arrests	New arrest rate	RTP	RTP rate	New sentence	New sentence rate
Youngest	268	124	46.3%	170	63.4%	132	49.3%	80	29.9%
2nd Youngest	240	121	50.4%	154	64.2%	117	48.8%	77	32.1%
Middle	274	108	39.4%	163	59.5%	132	48.2%	58	21.2%
2nd oldest	271	93	34.3%	136	50.2%	102	37.6%	55	20.3%
Oldest	244	76	31.1%	108	44.3%	80	32.8%	47	19.3%
All women	1297	522	40.2%	731	56.4%	563	43.4%	317	24.4%

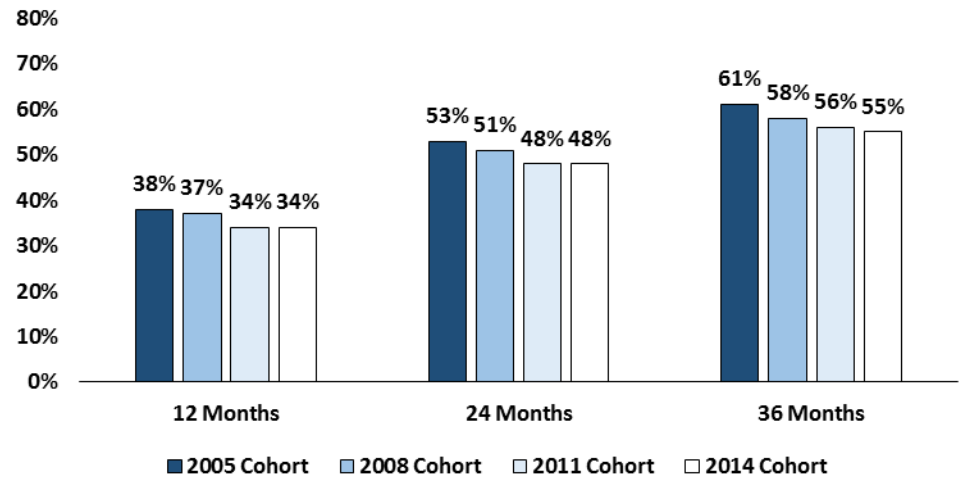
- Among women, younger offenders also recidivated at higher rates than older offenders

Recidivism rates, over time

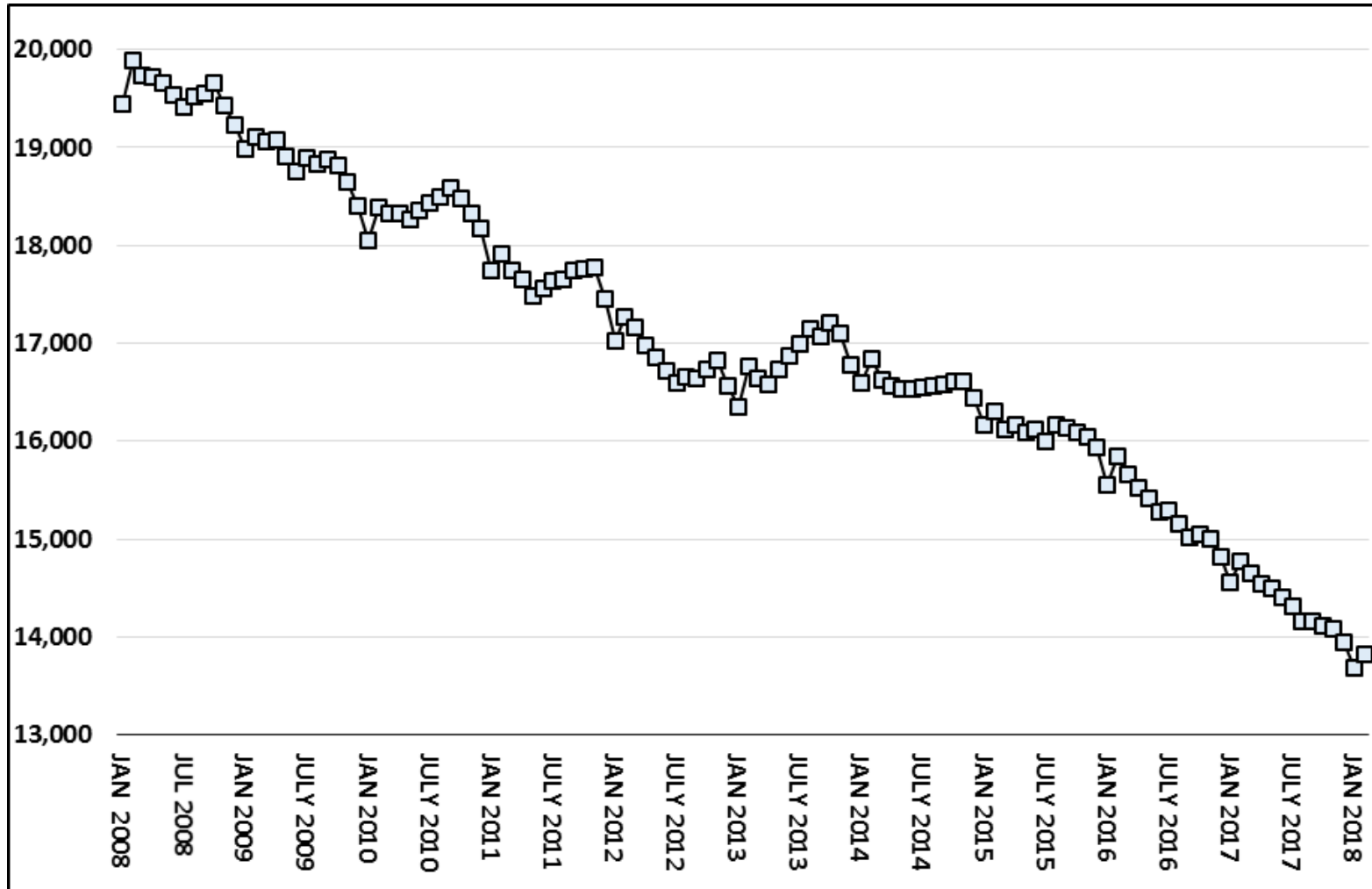
Recidivism rates, new arrests



Recidivism rates, return to prison

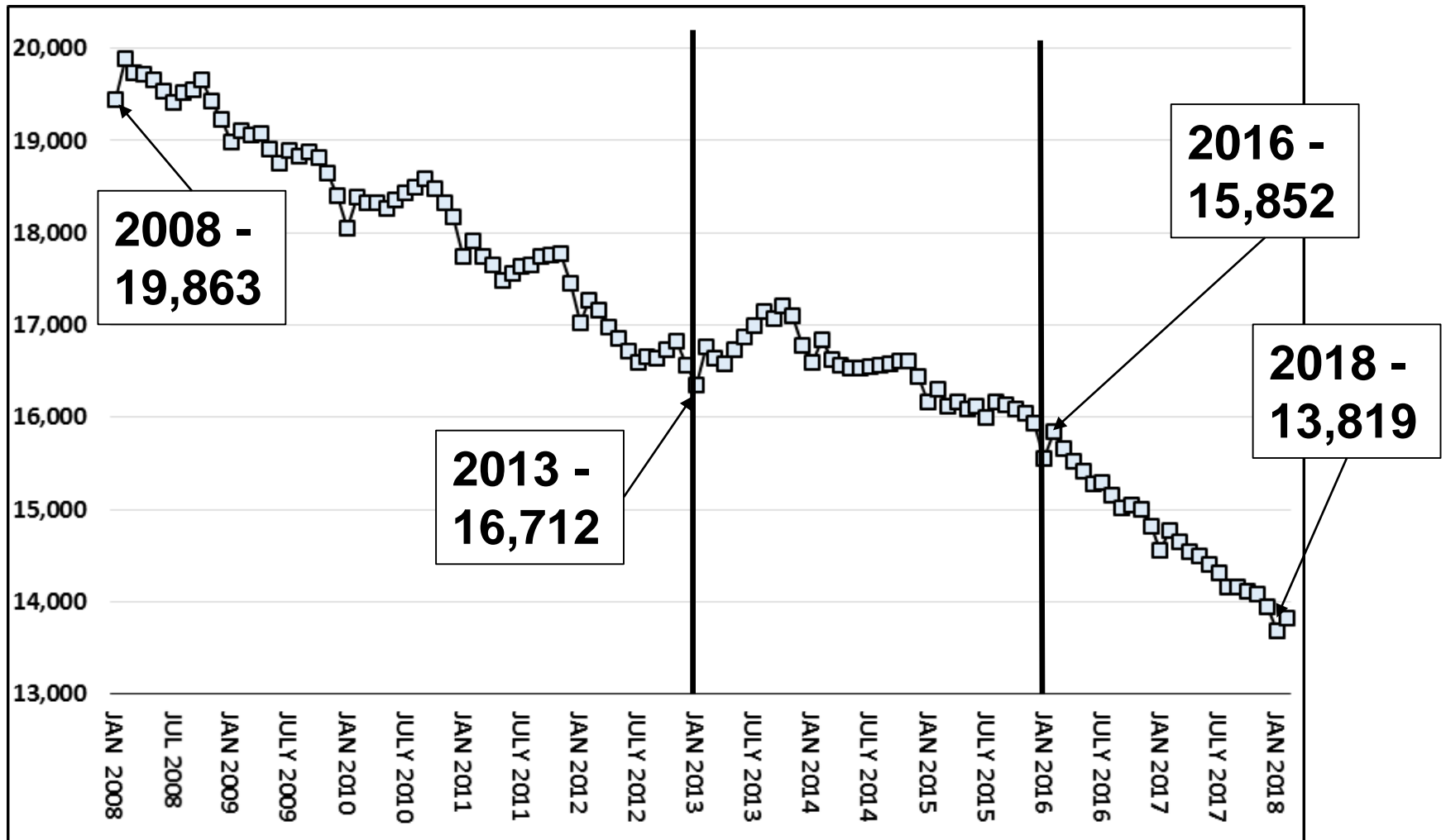


Prison Population, 2008 to 2018



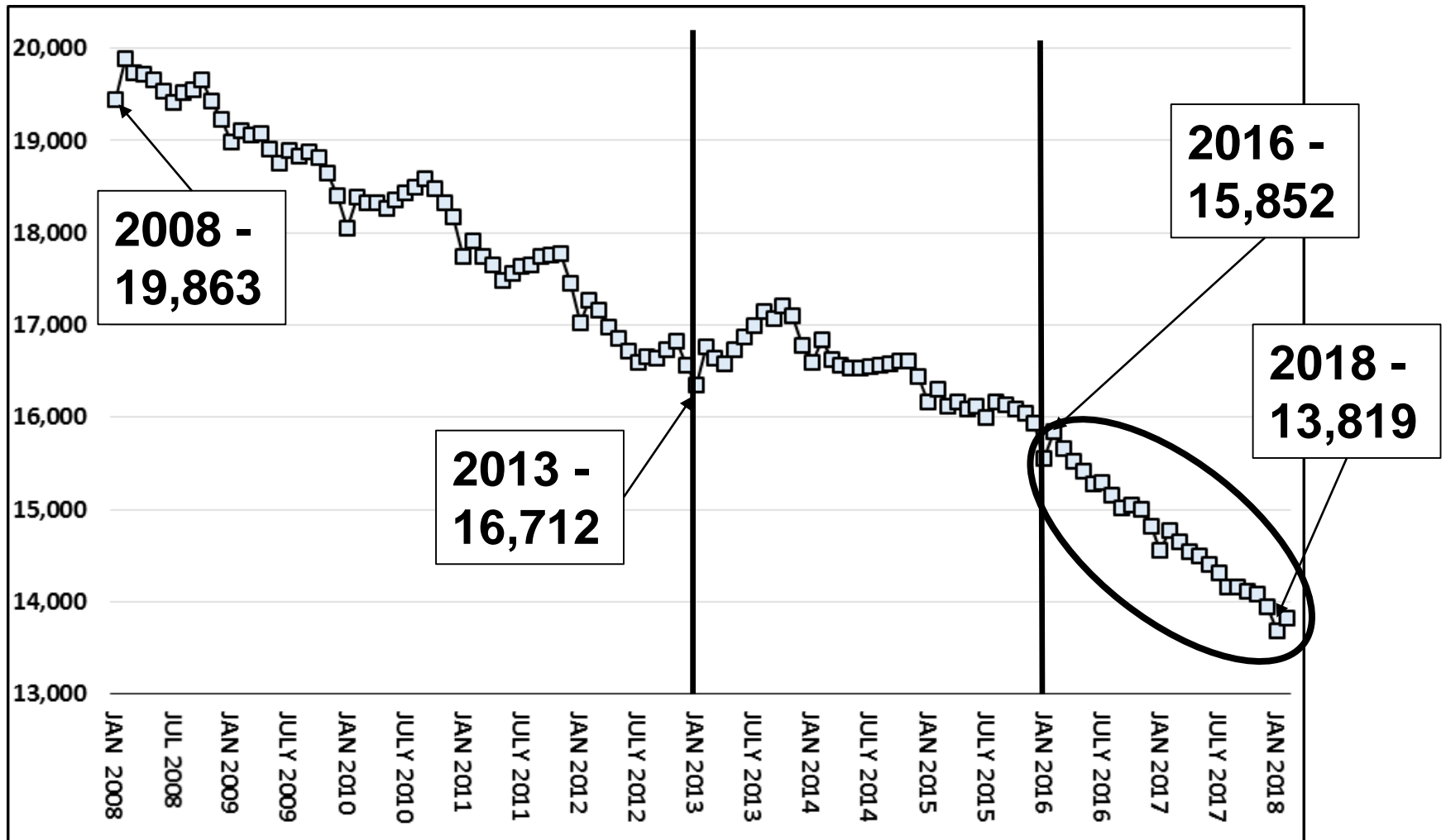
- **Clear trend of decline since historic peak in 2008**

Prison Population, 2008 to 2018



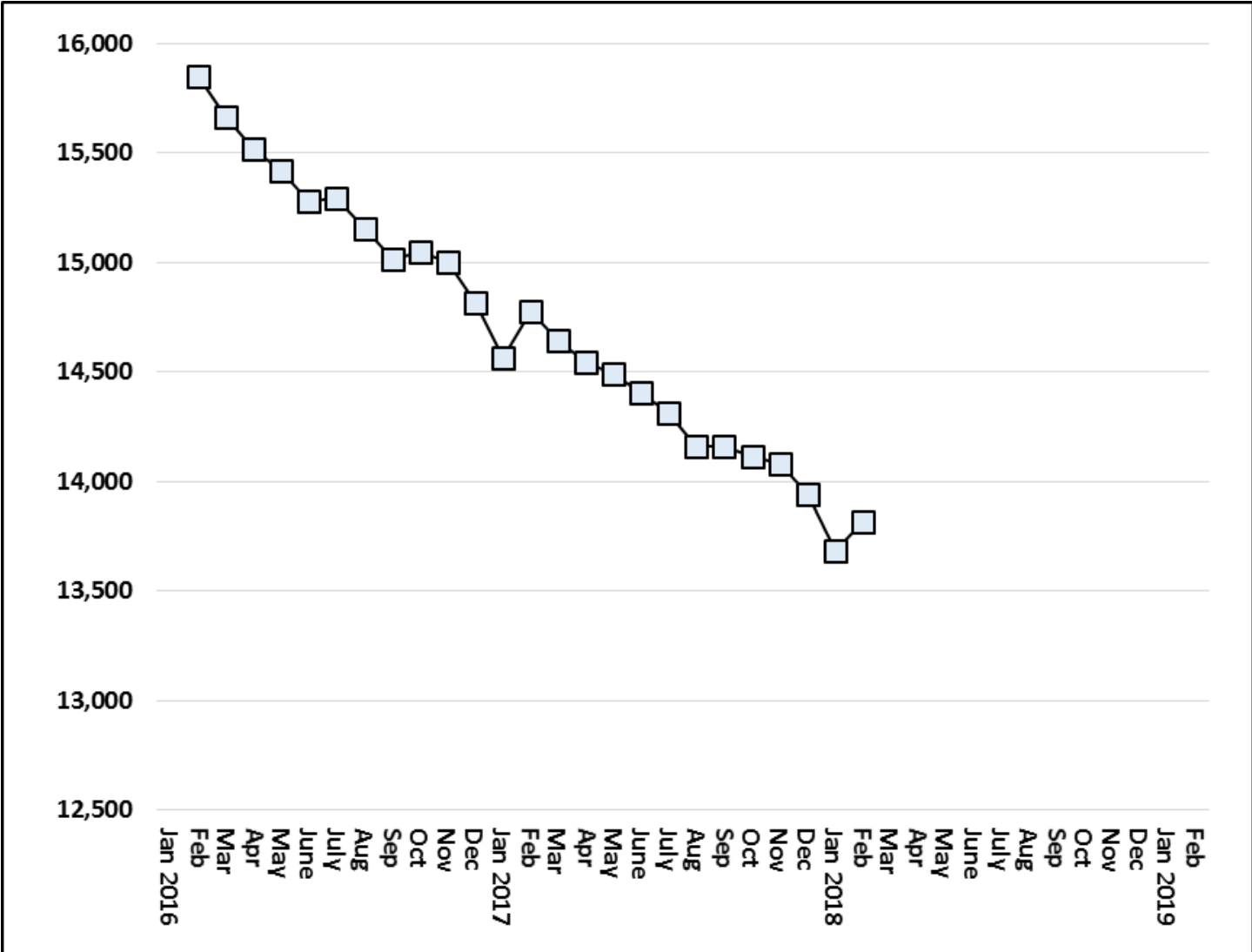
- Since 2008, the prison population has gone through three distinct periods

Prison Population, 2008 to 2018



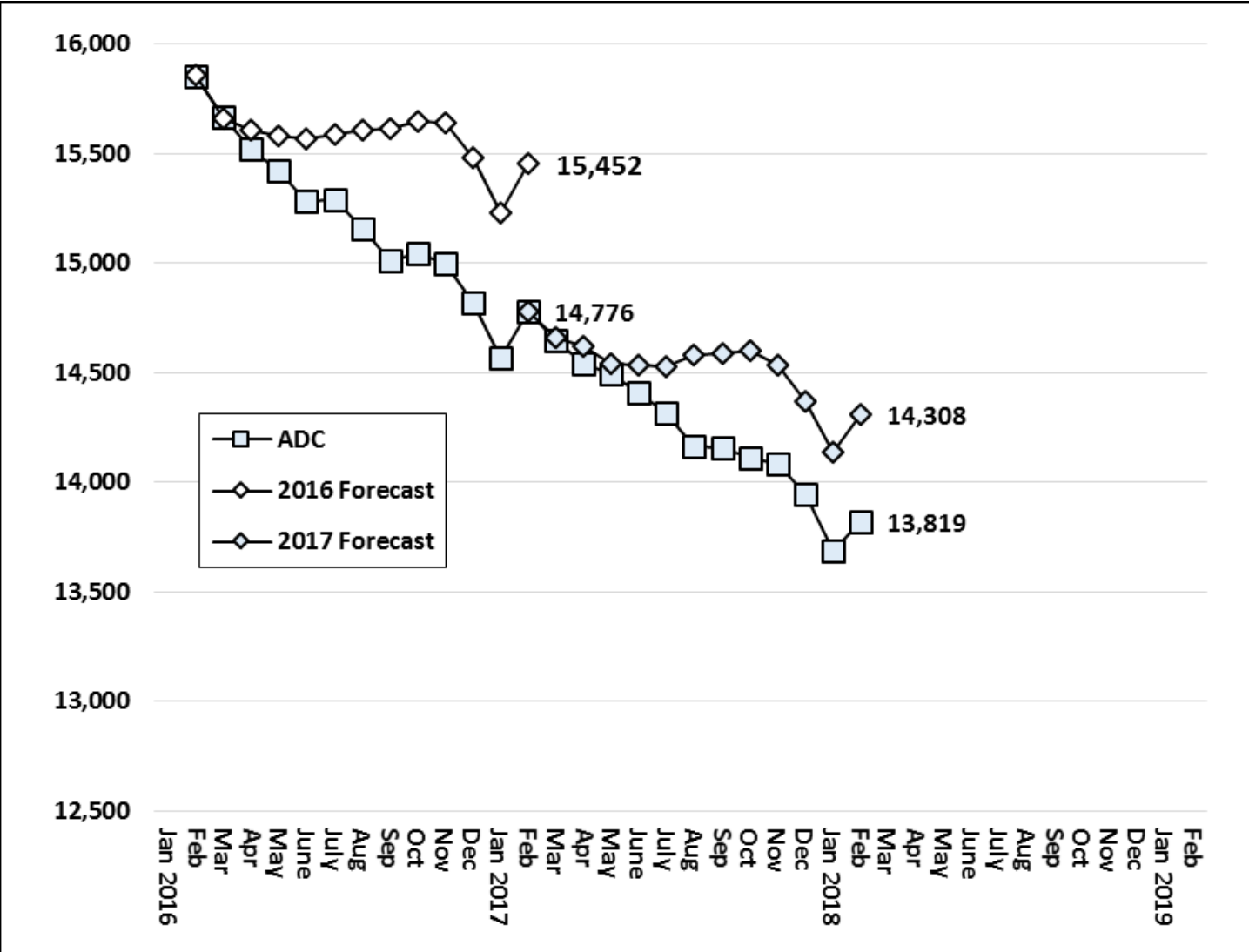
- 2018 projection, emphasis on last two years

Recent Trends



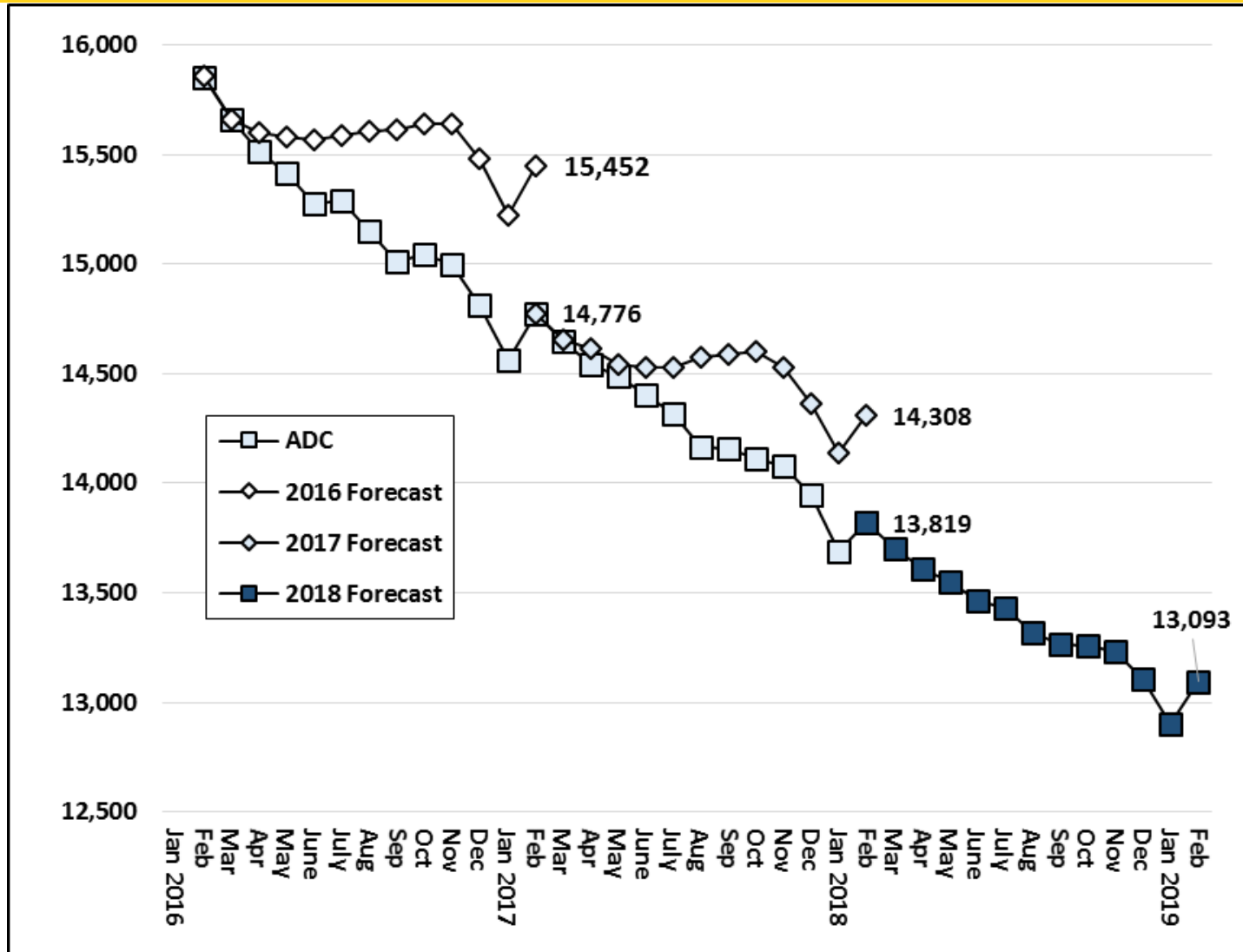
- **2016 and 2017 – clear trend**

Forecasts 2016 & 2017 vs actual



- **2016 and 2017 were too conservative**

2018 Forecast



- **Expectation is that 2018 will trend like 2016 and 2017**

OFFICE OF POLICY & MANAGEMENT

Criminal Justice

Policy & Planning Division



www.ct.gov/opm/CriminalJustice/Research