

OPM - Criminal Justice Policy & Planning Division Monthly Indicators Report

Highlights

- On November 1, 2021, Connecticut's prisons and jails held 9,431 people, up just 76 individuals from the first of October. Comparisons over the last year, between November 2020 and 2021, show marginal growth of only 0.8% (from 9,353 to 9,431 individuals).
- For all the differences between 2020 and 2021 with respect to the effect of the COVID-19 pandemic on the resident population, total May to October arrest volumes were remarkably similar albeit with variation within certain months over that six-month period. There were just 3% more arrests over this period in 2021 than 2020. (Chart 5). With greater state resident movement and activity during this period in 2021 compared to 2020, one might anticipate more arrests and thus a bigger difference between the two years. June, which had 12% more arrests in 2021 than 2020, was the only major exception in these six-month periods, however.
- The transitional supervision population reached its lowest level in a decade. On November 1, 2021, there were only 110 individuals on this type of supervision. Although these declines began pre-pandemic, the reduction became more pronounced over the last year, with the population contracting 69.2% between this November and one year prior (from 357 to 110 people).

Correction Population Forecast

The number of people held in Connecticut jails and prisons in the first week of November continues to outpace OPM's forecast. The average daily count of 9,426 surpassed OPM's estimate by 518 individuals and the average daily count's percent difference from OPM's forecast in November rose to 5.8% from October's 5.3% difference. Despite the growing divergence between the forecasted and actual populations, correction population growth remains small: the correction population differs by less than 1% from a year ago.

The pretrial and sentenced populations increased slightly this past month. The pretrial rose 1.8% between October and November while the sentenced population grew by less than 1%. October admissions, including those for pretrial and new sentences, mirrored last month's amounts. Pretrial releases from court rose modestly (3.7%), but sentenced releases and discharges held steady. Total discharges and releases were 15% lower than a year ago, and well below pre-pandemic levels.

TABLE 1 – Correction Population Forecast

	Avg. Daily Count	OPM 2021 Forecast	Inmate difference
JAN '21	9,106	-	-
FEB	9,044	9,044	-
MAR	9,048	9,020	-28
APR	8,931	8,999	68
MAY	8,955	8,957	2
JUN	8,965	8,914	-51
JUL	9,009	8,890	-119
AUG	9,143	8,869	-274
SEP	9,253	8,827	-426
OCT	9,357	8,890	-467
NOV	9,426	8,908	-518
DEC		8,924	-
JAN '22		8,864	-
FEB		8,986	-

Avg. Daily Count (ADC) for 1st week of month

We expect the growth observed this fall will taper, as each November and December seasonal drops emerge in both pretrial admissions and the correction population. OPM will continue to monitor these indicators for a seasonal contraction, as well as facility exits, to better anticipate where the correction population may be headed in 2022.

Chart 1 – Actual Correction Population Against the OPM Forecasts
January 1, 2020 through February 1, 2022

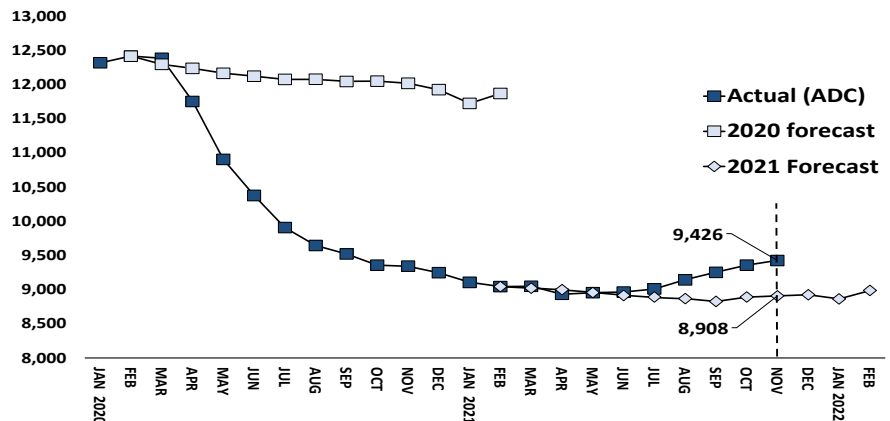


Chart 2 - Criminal Justice, Monthly Counts and Flows

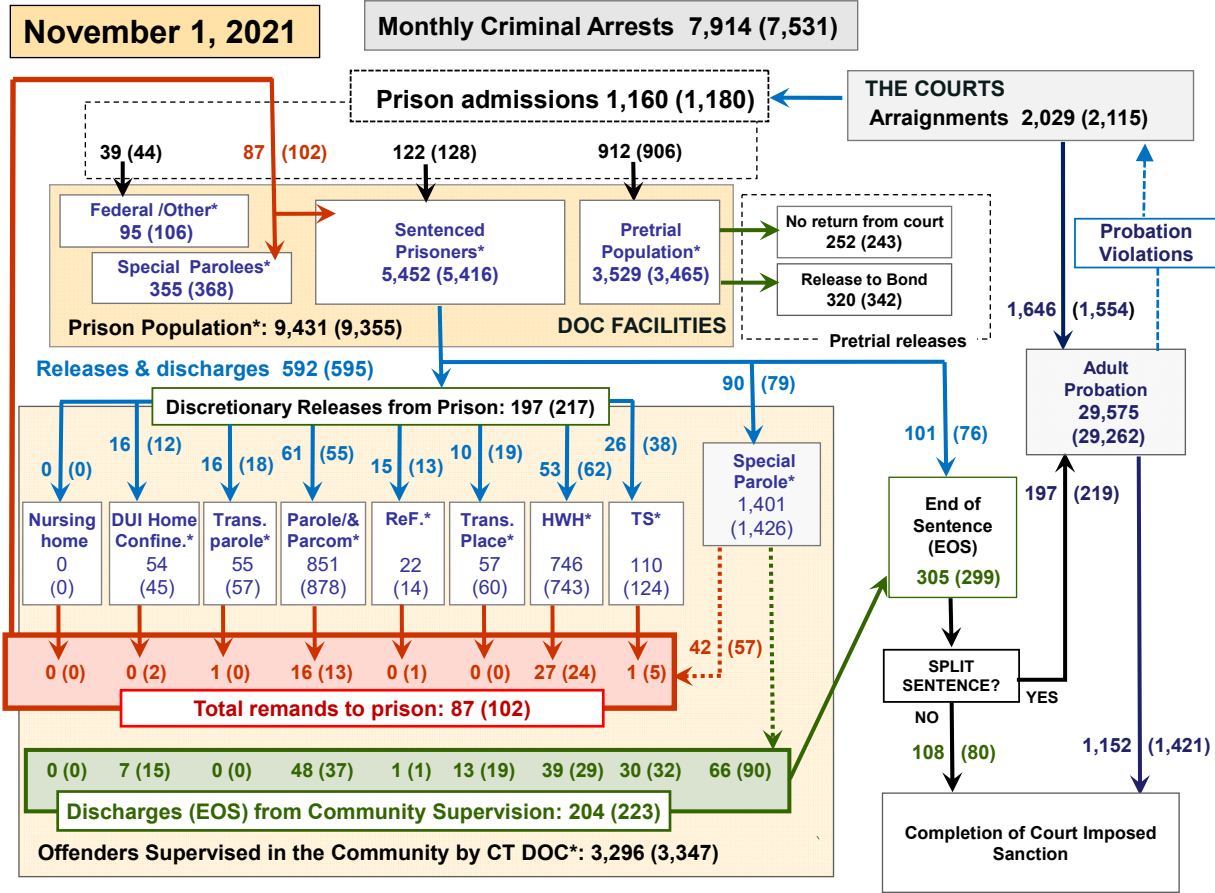
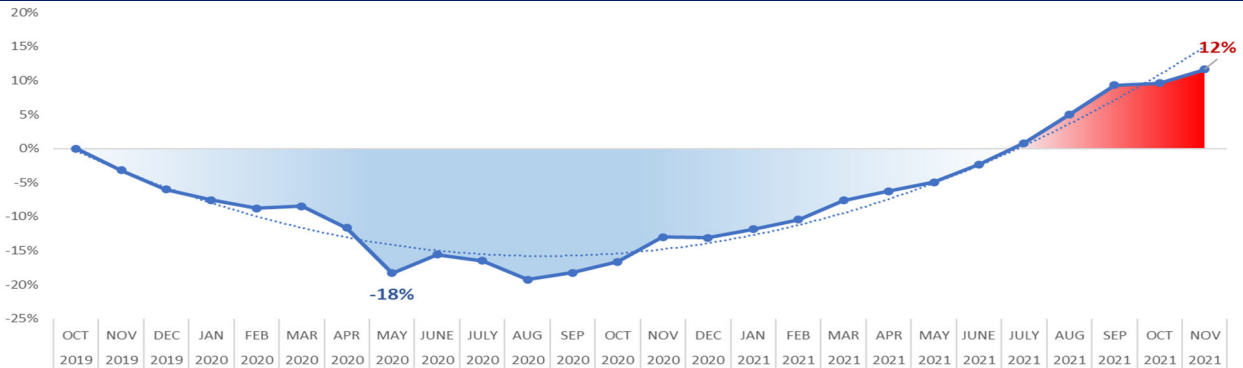


Chart 2 contains monthly operations data for October 2021 and daily counts reported on November 1, 2021. Asterisks (*) indicate the daily count on November 1st. Figures for last month are enclosed by parentheses. Sources: Arrests – CRMVS, via CJIS, Court and probation data - CSSD, all other data - CT DOC.

Spotlight: Pretrial Population Changes During the Pandemic



In recent *Monthly* reports, OPM has noted the growth in the pretrial population. This month, to better assess observed trends, we compare the pretrial population growth against historic fluctuations. With the onset of the COVID-19 pandemic in 2020 and its system-wide disruptions to trends, we wanted to directly examine pandemic pretrial population changes in comparison to pre-pandemic levels.

The chart above displays the first-of-the-month pretrial population changes from fall 2019 onward. Typically, the correctional pretrial population peaks late-summer into fall, in keeping with seasonal late-summer increases in arrests. Setting the October 1, 2019 pretrial population as the benchmark, when the population last peaked prior to

the pandemic's onset, the chart tracks the percentage change each month from that amount.

The chart demonstrates a remarkably U-shaped trend, where the correctional pretrial population falls nearly 20% below the benchmark during the pandemic summer of 2020, before increasing steadily into 2021. By July 1, 2021 the correctional pretrial population exceeds the benchmark, and by November 1, 2021, the population is 12% larger than on October 1, 2019. The correctional pretrial population's November 1 count of 3,529 is the largest since fall 2014. OPM will monitor trends in months ahead to see whether inter-branch and agency innovations to dispose cases helps return this population to pre-pandemic ranges.

Table 2 - First-of-Month Totals

	2021	2021	2021	2020	% Change	
	Sep. 1	Oct. 1	Nov. 1	Nov. 1	Monthly	Annual
DOC Facilities						
Federal/Other	91	106	95	132	-10.4%	-28.0%
Sentenced	5,367	5,416	5,452	6,143	0.7%	-11.2%
Special Parole	358	368	355	328	-3.5%	8.2%
Pretrial	3,456	3,465	3,529	2,750	1.8%	28.3%
Total	9,272	9,355	9,431	9,353	0.8%	0.8%
DOC Community						
Transfer Parole	59	57	55	203	-3.5%	-72.9%
Parole/ Parcom Total	904	878	851	954	-3.1%	-10.8%
Parole	723	707	686	774	-3.0%	-11.4%
Parcom @ CT	181	171	165	180	-3.5%	-8.3%
Furlough	19	14	22	43	57.1%	-48.8%
Trans Placement	60	60	57	77	-5.0%	-26.0%
DUI/Home confine.	51	45	54	36	20.0%	50.0%
Halfway House Total	784	743	746	867	0.4%	-14.0%
Comm Release	390	362	342	452	-5.5%	-24.3%
TS	8	6	11	25	83.3%	-56.0%
Parole	138	136	132	111	-2.9%	18.9%
Transfer Parole	7	10	14	29	40.0%	-51.7%
Special Parole	241	229	247	250	7.9%	-1.2%
TS	123	124	110	357	-11.3%	-69.2%
Nursing home	0	0	0	0	-	-
Special Parole	1,480	1,426	1,401	2,092	-1.8%	-33.0%
Total	3,481	3,347	3,296	4,629	-1.5%	-28.8%

Table 2a - Monthly Admissions, Releases, & Discharges

	2021	2021	2021	2020	% Change	
	AUG	SEP	OCT	OCT	Monthly	Annual
Admissions						
Federal/Other	32	44	39	22	-11.4%	77.3%
Remands	111	102	87	115	-14.7%	-24.3%
DUI	4	2	0	0	-100.0%	-
Transfer Parole	2	0	1	0	-	-
Parole	25	13	16	14	23.1%	14.3%
Trans Plac/Furlough	2	1	0	3	-100.0%	-100.0%
HWH	18	24	27	19	12.5%	42.1%
TS	3	5	1	11	-80.0%	-90.9%
Special Parole	57	57	42	62	-26.3%	-32.3%
New Sentence	102	128	122	59	-4.7%	106.8%
VOP	25	39	25	17	-35.9%	47.1%
Pretrial	951	906	912	757	0.7%	20.5%
Total	1,196	1,180	1,160	953	-1.7%	21.7%
Releases and discharges						
Transfer Parole	18	18	16	39	-11.1%	-59.0%
Parole	59	55	61	63	10.9%	-3.2%
Furlough	14	13	15	21	15.4%	-28.6%
Trans. Placement	11	19	10	18	-47.4%	-44.4%
Home Confinement DUI	24	12	16	2	33.3%	700.0%
HWH	50	62	53	91	-14.5%	-41.8%
TS	29	38	26	52	-31.6%	-50.0%
Special Parole	77	79	90	60	13.9%	50.0%
Nursing home	0	0	0	0	-	-
End of Sentence	298	299	305	357	2.0%	-14.6%
Total	580	595	592	703	-0.5%	-15.8%
Pretrial Releases*						
From Court	219	243	252	116	3.7%	117.2%
Release to Bond	349	342	320	333	-6.4%	-3.9%

* Totals reflect events, not individual offenders

DOC - Community Release Unit (CRU)

Table 3 - Case reviews and release metrics

	Cases				Approval Rate
	Reviewed	Approved	Denied	Continued	
AUG	304	134	46	43	44%
SEP	302	137	35	47	45%
OCT 21	301	137	38	54	46%
OCT 20	302	119	47	38	39%

Note: Figures published here are based on the operational data available at the time of publication. Data in subsequent issues may not agree.

Board of Pardons and Paroles

Table 4 - Parole hearings, new cases

	Parole Hearings	Paroles granted	Grant rate	Granted: Prior Year	Granted: Two Years Prior
AUG	81	57	70%	68	68
SEP	74	52	70%	102	66
OCT	80	49	61%	78	72

Table 4a - Other BOPP actions

	Reparole from revocation	Reparole from rescission	Closed interest cases	Special parole cases	Transfer parole cases
AUG	23	1	10	8	17
SEP	12	0	12	12	18
OCT 2021	30	0	14	18	19
OCT 2020	19	0	19	15	36

The Pretrial Population

Table 5 - Bond ranges for pretrial detainees

Bond amount	Sep. 1, 2021	Oct. 1, 2021	Nov. 1, 2021	Nov. 1, 2020
Less than \$20K	398	379	374	359
\$20K to <\$50K	423	450	432	386
\$50K to <\$100K	571	588	584	454
\$100K or higher	2,237	2,271	2,331	1,734
Persons w/bonds	3,629	3,688	3,721	2,933
Over \$1M	383	391	398	273

Table 5a - Pretrial, weeks since admission

Weeks since last DOC admit	Sep. 1, 2021	Oct. 1, 2021	Nov. 1, 2021	Nov. 1, 2020
< 1 week	221	290	317	220
1 to < 3 weeks	246	263	258	202
3 to < 10 weeks	700	644	658	480
10 to < 30 weeks	989	1,004	1,020	647
30 wks or more	1,484	1,490	1,471	1,387
Pretrial prisoners	3,640	3,691	3,724	2,936

Table 5b - Pretrial admits, new offenders

	AUG 2021	SEP 2021	OCT 2021	OCT 2020
Arraignments	2,115	2,115	2,029	1,696
Pretrial Admits	951	906	912	757
New to DOC	217	234	239	188
% New	23%	26%	26%	25%

Court Support Services Division

Table 6 - The jail reinterview program

	Pretrial admissions	Offender interviews	Offenders released	Released last year
AUG	951	795	180	139
SEP	906	860	245	156
OCT	912	812	238	148

Table 6a - Pretrial bail and probation caseloads

	Pretrial Bail Case Starts	Client Supv. Starts	Split Sentence Starts	Pretrial bail cases
AUG	2,050*	1,411	204	12,665*
SEP	2,050*	1,554	219	12,665*
OCT	2,050*	1,646	197	12,665*
OCT '20	2,050*	666	230	12,665*

* CSSD estimates

Chart 3 – Prison Population

First week of the month, avg. daily count (ADC)

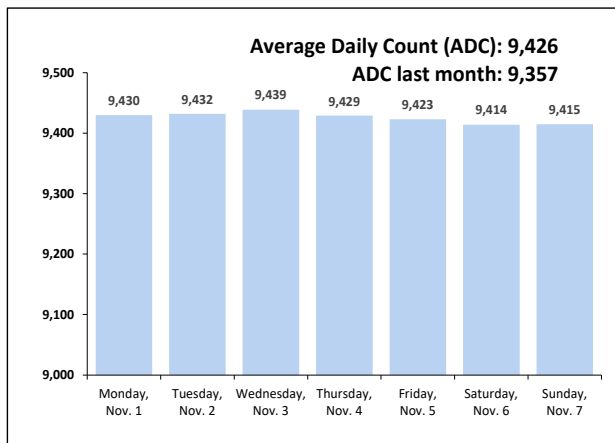


Chart 6 – Monthly DOC Admissions

October 2020 through October 2021

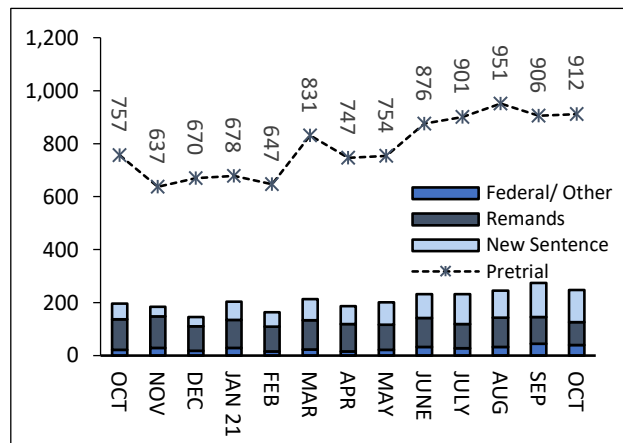


Chart 4 – Prison Population, First-of-Month

2018, 2019, 2020, and 2021

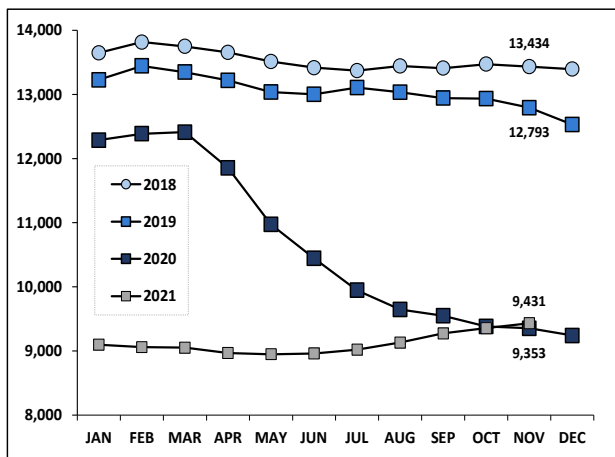


Chart 7– Remands From Community Release

October 2021

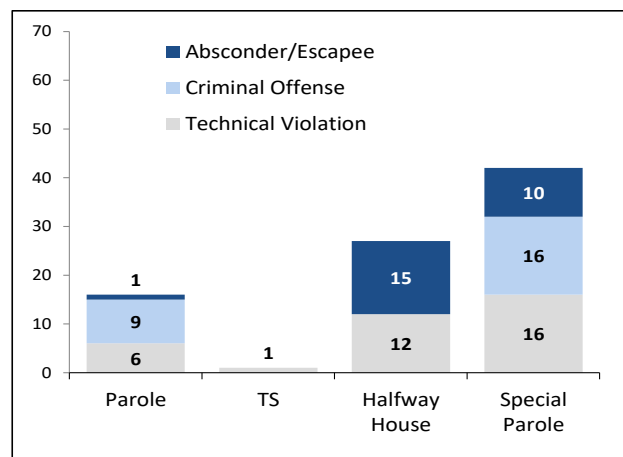


Chart 5 – Statewide Arrests

2020 and 2021

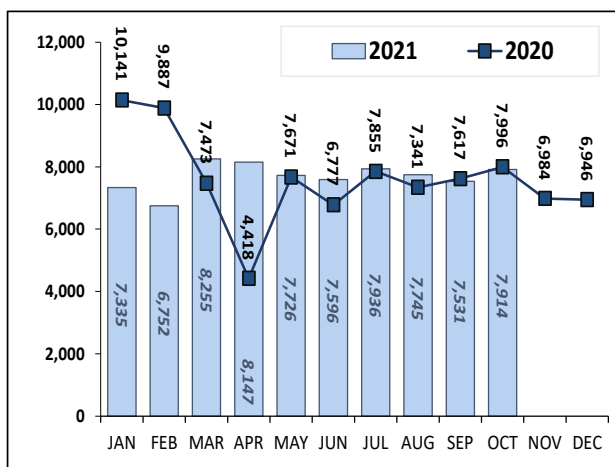
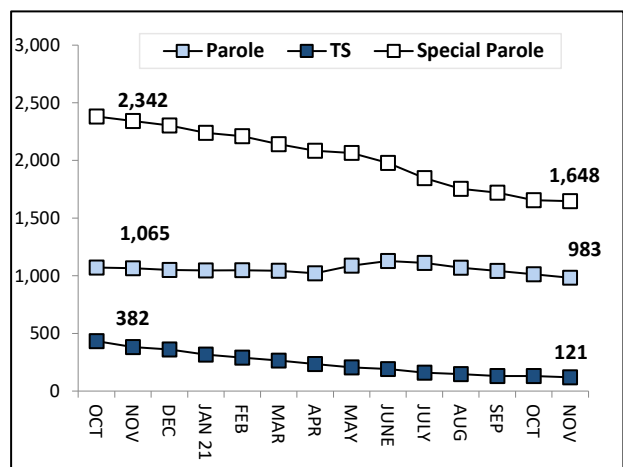


Chart 8 – DOC Community Supervision

Oct. 1, 2020 through Nov. 1, 2021



Note: Data for all charts, except for Chart 5, was supplied by CT DOC. Data for Chart 5 are for new case starts in the state Criminal Motor Vehicle System (CRMVS). Chart 8 includes offenders in halfway houses.