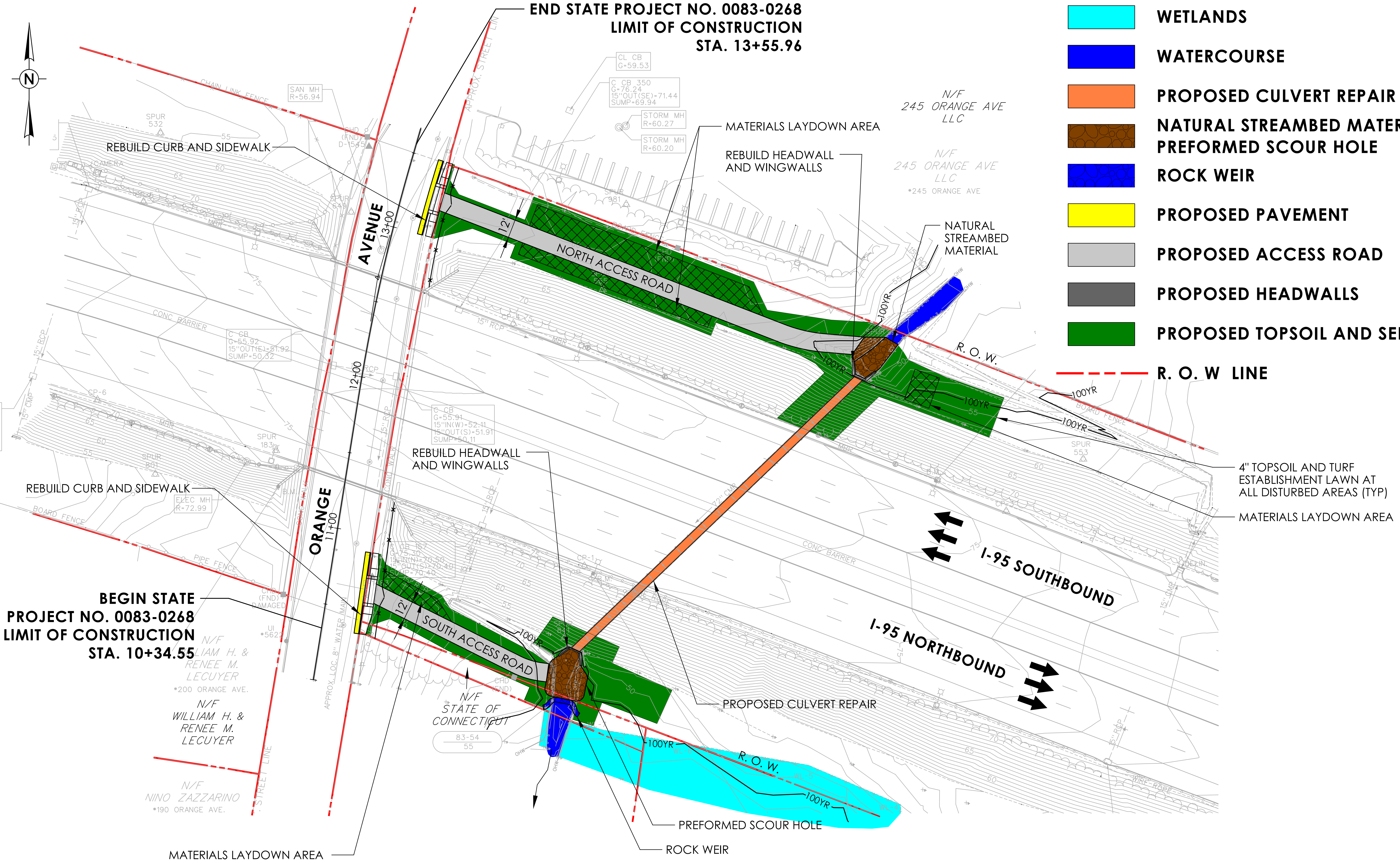


LEGEND

- WETLANDS**
- WATERCOURSE**
- PROPOSED CULVERT REPAIR**
- NATURAL STREAMBED MATERIAL/
PREFORMED SCOUR HOLE**
- ROCK WEIR**
- PROPOSED PAVEMENT**
- PROPOSED ACCESS ROAD**
- PROPOSED HEADWALLS**
- PROPOSED TOPSOIL AND SEED**

R. O. W. LINE



REV.	DATE	REVISION DESCRIPTION

DESIGNER/DRAFTER: DTK CHECKED BY: MDG

HORIZONTAL SCALE 1"=30'

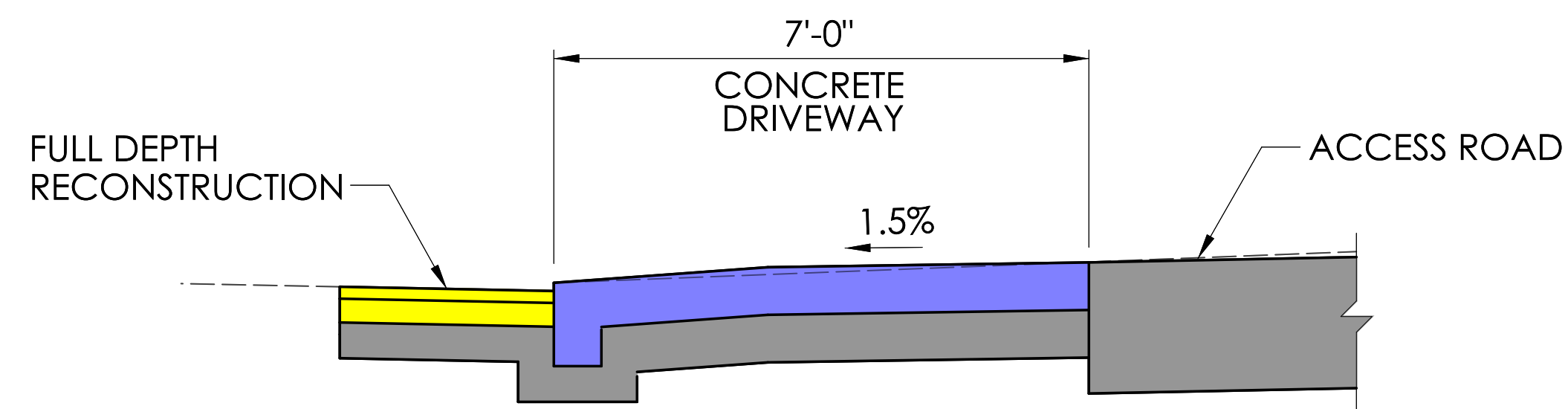
SIGNATURE/BLOCK: _____

M M
MOTT MACDONALD
 101 STATION DRIVE
 SUITE 130
 WESTWOOD, MA. 02090

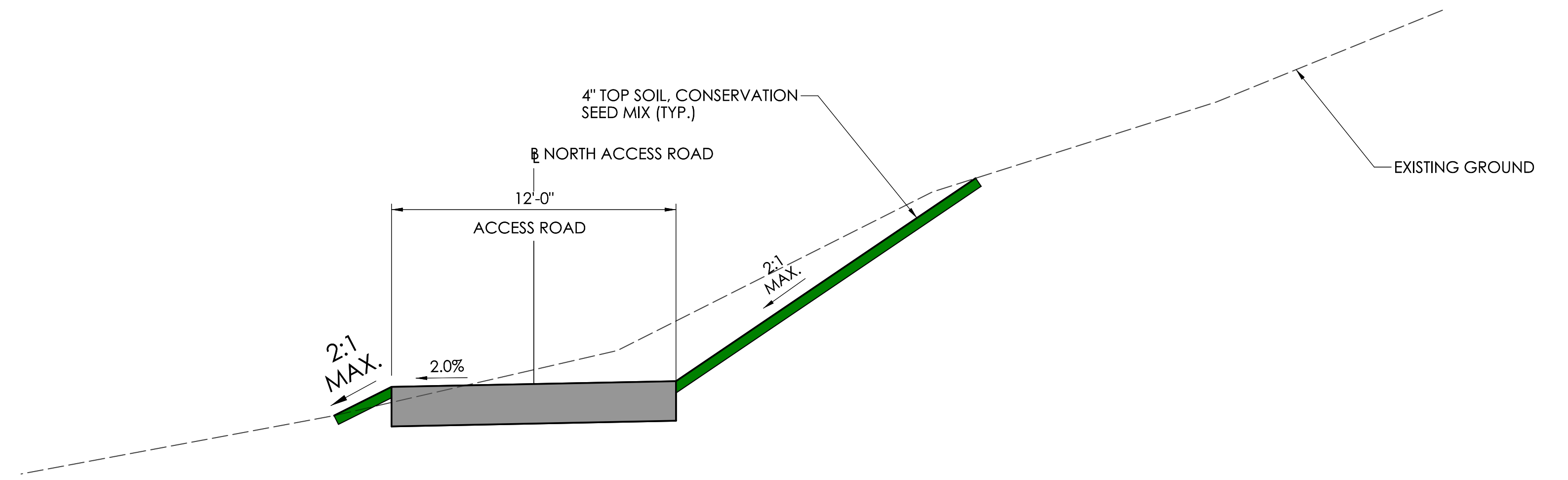
STATE OF CONNECTICUT
DEPARTMENT OF TRANSPORTATION

PROJECT NUMBER: 0083-0268
 PROJECT DESCRIPTION: REHABILITATION OF BRIDGE NO. 06798
 TOWN(S): CITY OF MILFORD
 DRAWING TITLE: ROADWAY PLAN

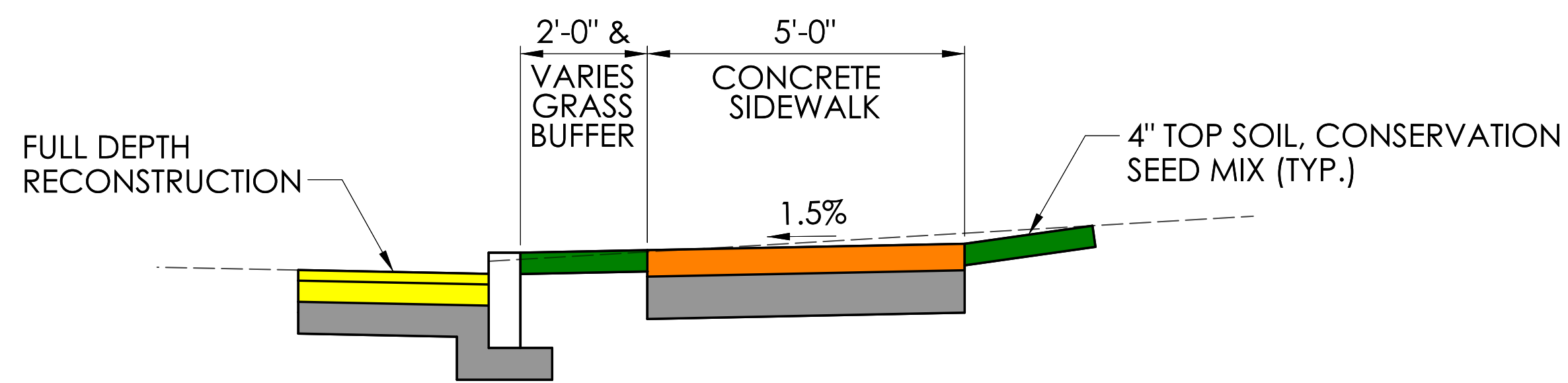
DRAWING NO. HWY-02
 SHEET NO. _____



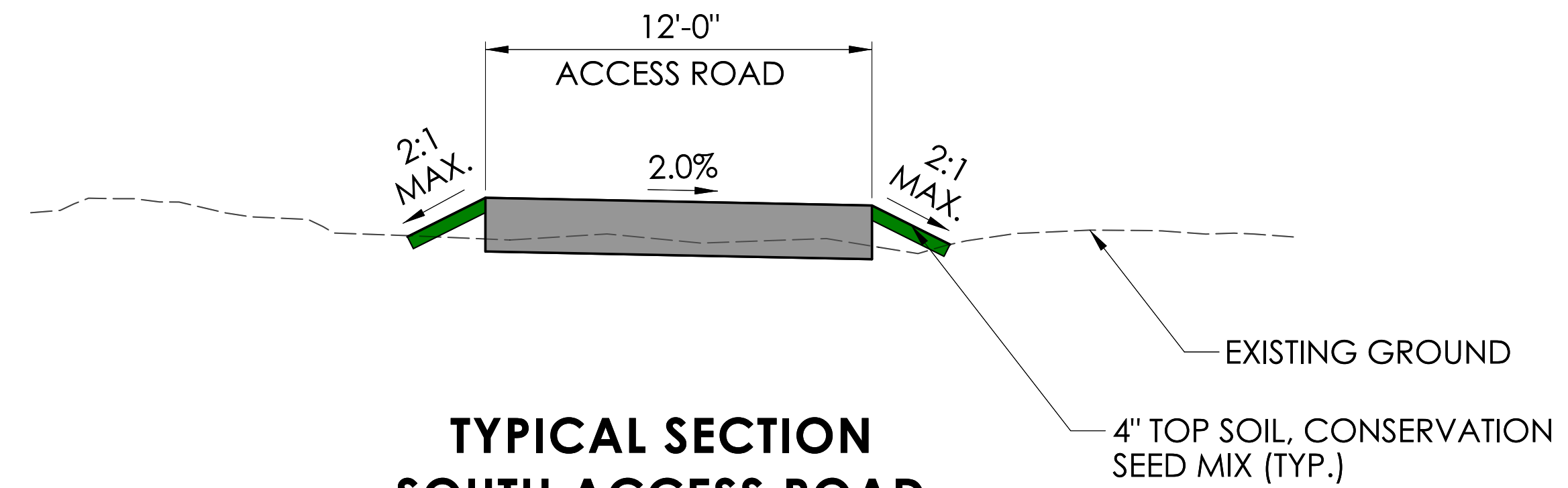
**PAVEMENT AND DRIVEWAY DETAIL
AT ACCESS ROADS**



**TYPICAL SECTION
NORTH ACCESS ROAD
1" = 4'**








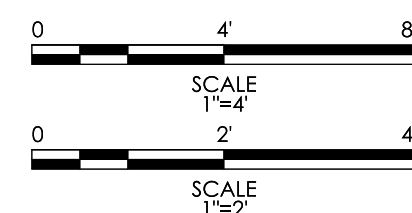
**PAVEMENT AND CURB REPAIR DETAIL
AT SIDEWALK**



**TYPICAL SECTION
SOUTH ACCESS ROAD
1" = 4'**

LEGEND

-  **PROPOSED PAVEMENT**
-  **PROPOSED PROCESSED AGGREGATE**
-  **PROPOSED TOPSOIL AND SEED**
-  **PROPOSED CONCRETE DRIVEWAY**
-  **PROPOSED CONCRETE SIDEWALK**



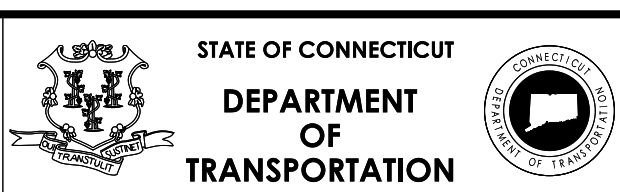
REV.	DATE	REVISION DESCRIPTION

DESIGNER/DRAFTER: DTK CHECKED BY: MDG

SCALE AS NOTED

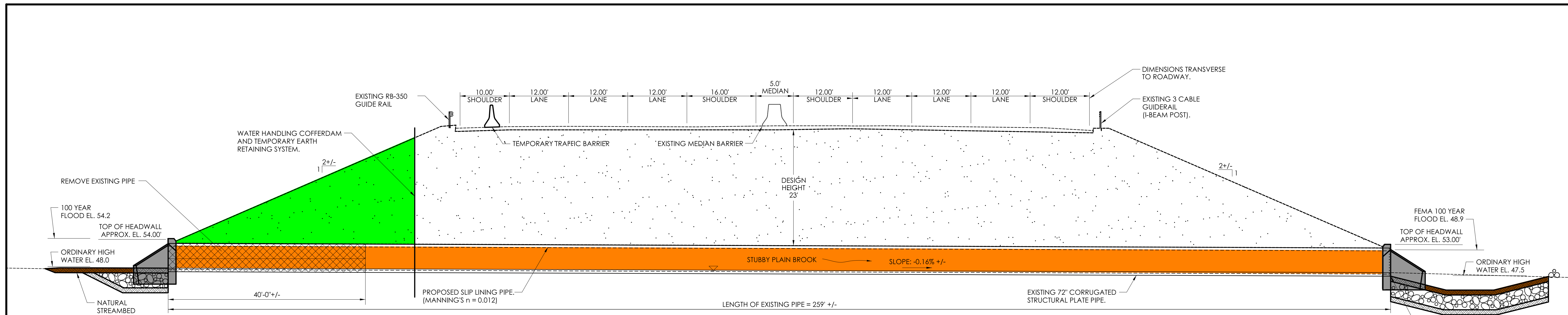
SIGNATURE/
BLOCK:

M M
MOTT MACDONALD
101 STATION DRIVE
SUITE 130
WESTWOOD, MA. 02090



PROJECT NUMBER: 0083-0268
PROJECT DESCRIPTION: REHABILITATION OF BRIDGE NO. 06798
TOWN(S): CITY OF MILFORD
DRAWING TITLE: TYPICAL SECTIONS

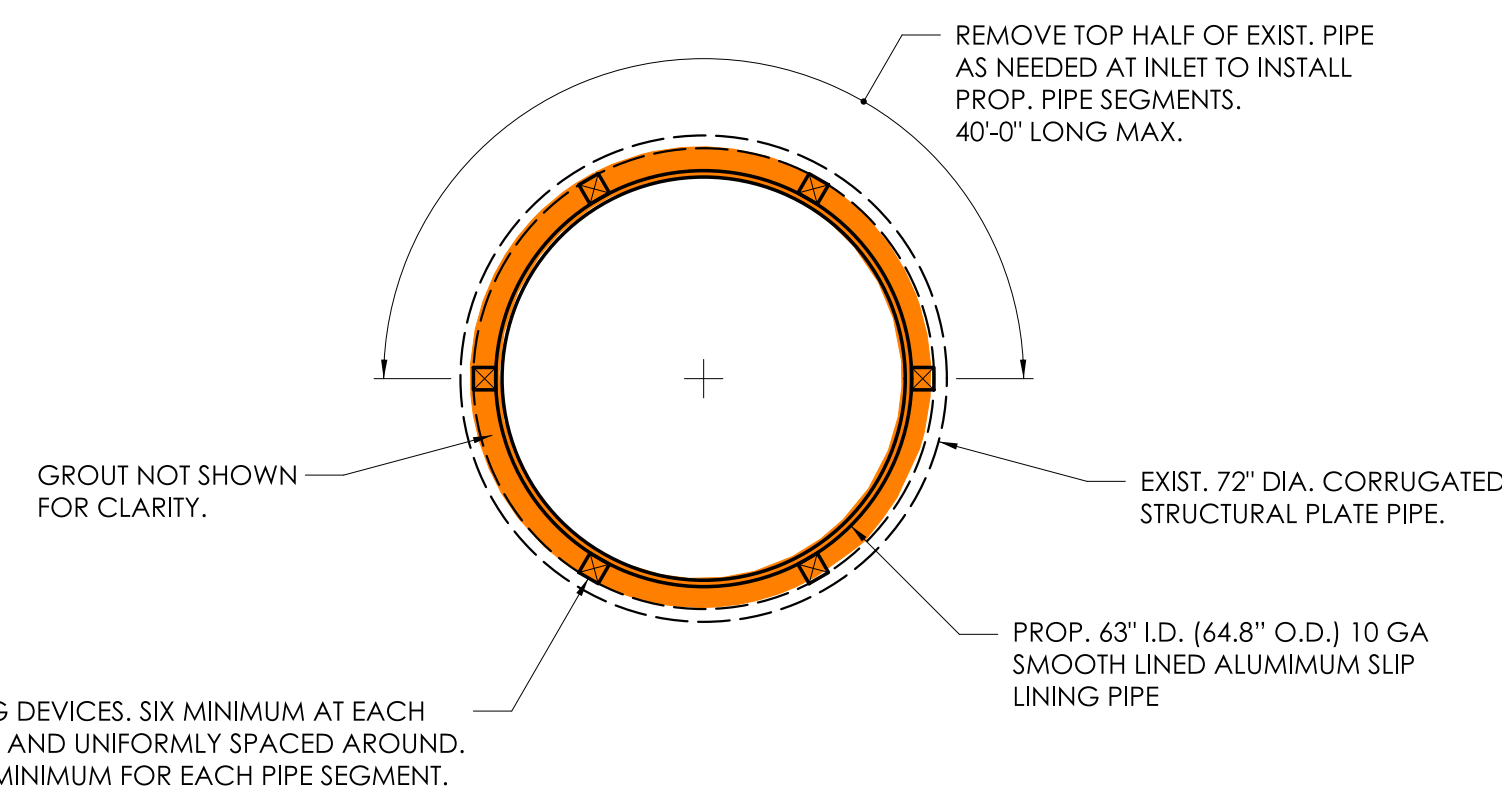
DRAWING NO.
HWY-01
SHEET NO.



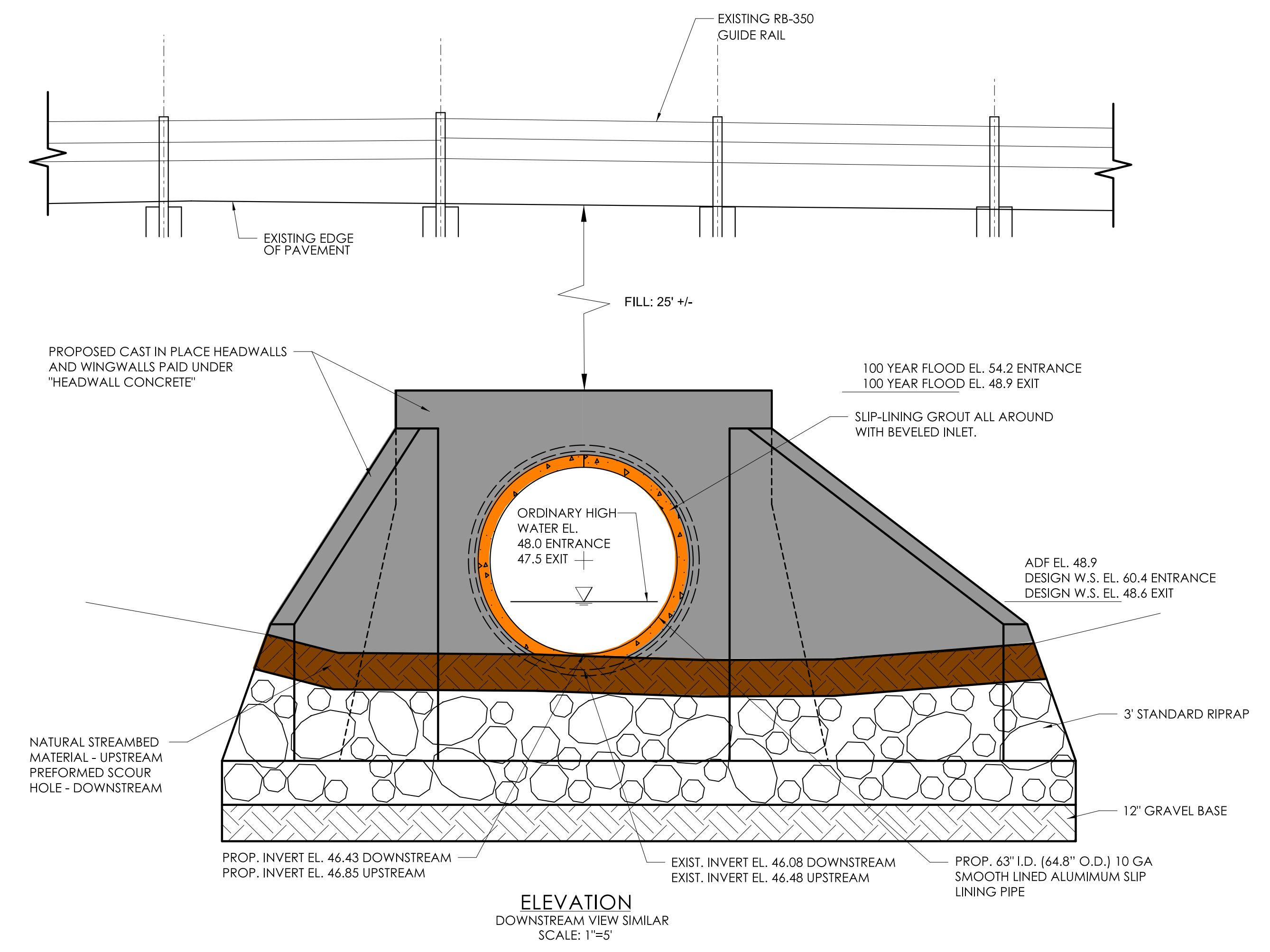
LONGITUDINAL SECTION (LOOKING EAST)
SCALE 1"=20'

LEGEND

- PROPOSED CULVERT
- PROPOSED HEADWALL AND WINGWALL
- PROPOSED EARTHWORK
- NATURAL STREAMBED MATERIAL/PREFORMED SCOUR HOLE

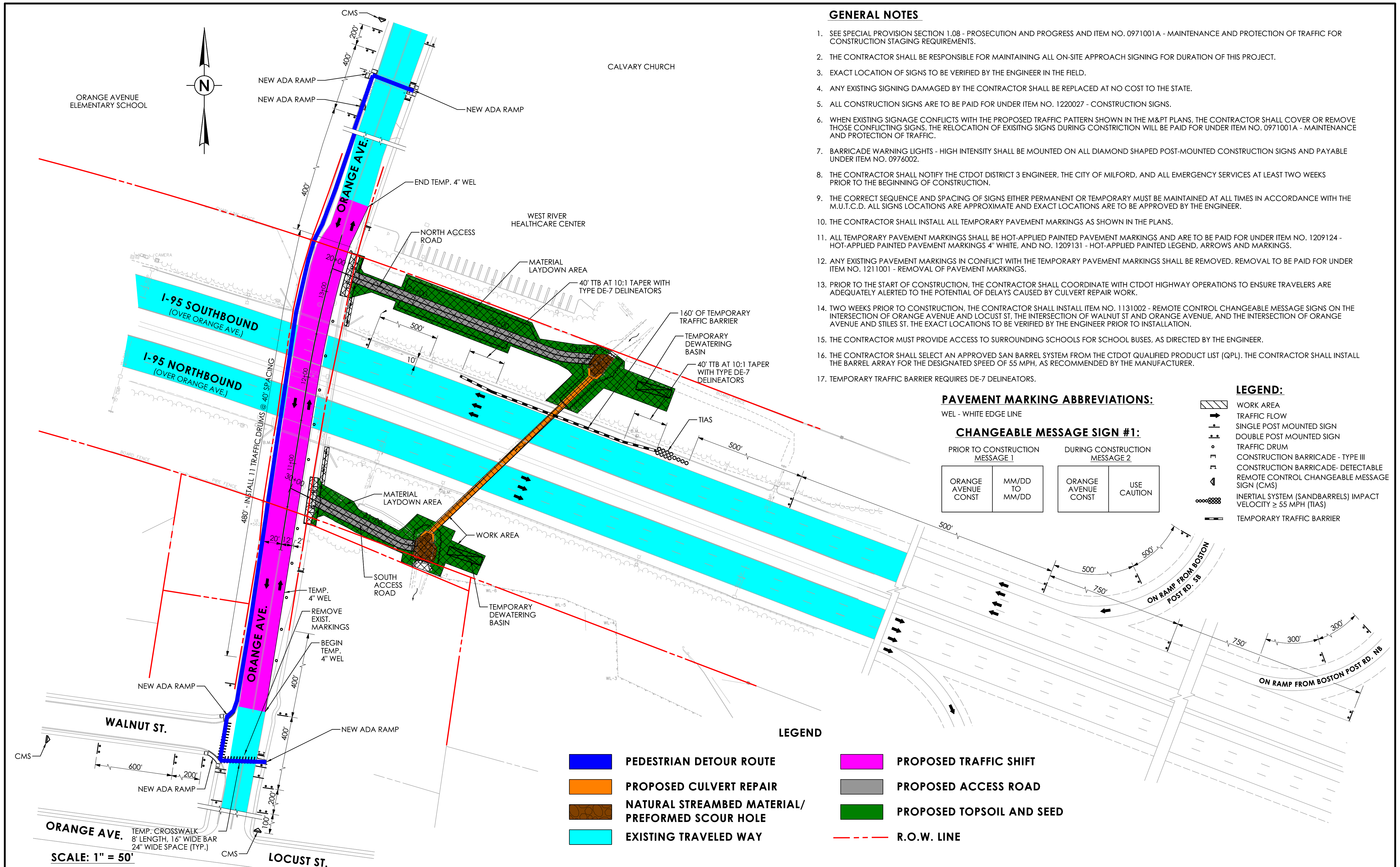


TRANSVERSE SECTION (LOOKING SOUTH)
SCALE: 1"=5'



ELEVATION
DOWNSTREAM VIEW SIMILAR
SCALE: 1"=5'

REV.	DATE	REVISION DESCRIPTION



GENERAL NOTES

- SEE SPECIAL PROVISION SECTION 1.08 - PROSECUTION AND PROGRESS AND ITEM NO. 0971001A - MAINTENANCE AND PROTECTION OF TRAFFIC FOR CONSTRUCTION STAGING REQUIREMENTS.
- THE CONTRACTOR SHALL BE RESPONSIBLE FOR MAINTAINING ALL ON-SITE APPROACH SIGNING FOR DURATION OF THIS PROJECT.
- EXACT LOCATION OF SIGNS TO BE VERIFIED BY THE ENGINEER IN THE FIELD.
- ANY EXISTING SIGNING DAMAGED BY THE CONTRACTOR SHALL BE REPLACED AT NO COST TO THE STATE.
- ALL CONSTRUCTION SIGNS ARE TO BE PAID FOR UNDER ITEM NO. 1220027 - CONSTRUCTION SIGNS.
- WHEN EXISTING SIGNAGE CONFLICTS WITH THE PROPOSED TRAFFIC PATTERN SHOWN IN THE M&PT PLANS, THE CONTRACTOR SHALL COVER OR REMOVE THOSE CONFLICTING SIGNS. THE RELOCATION OF EXISTING SIGNS DURING CONSTRUCTION WILL BE PAID FOR UNDER ITEM NO. 0971001A - MAINTENANCE AND PROTECTION OF TRAFFIC.
- BARRICADE WARNING LIGHTS - HIGH INTENSITY SHALL BE MOUNTED ON ALL DIAMOND SHAPED POST-MOUNTED CONSTRUCTION SIGNS AND PAYABLE UNDER ITEM NO. 0976002.
- THE CONTRACTOR SHALL NOTIFY THE CTDOT DISTRICT 3 ENGINEER, THE CITY OF MILFORD, AND ALL EMERGENCY SERVICES AT LEAST TWO WEEKS PRIOR TO THE BEGINNING OF CONSTRUCTION.
- THE CORRECT SEQUENCE AND SPACING OF SIGNS EITHER PERMANENT OR TEMPORARY MUST BE MAINTAINED AT ALL TIMES IN ACCORDANCE WITH THE M.U.T.C.D. ALL SIGNS LOCATIONS ARE APPROXIMATE AND EXACT LOCATIONS ARE TO BE APPROVED BY THE ENGINEER.
- THE CONTRACTOR SHALL INSTALL ALL TEMPORARY PAVEMENT MARKINGS AS SHOWN IN THE PLANS.
- ALL TEMPORARY PAVEMENT MARKINGS SHALL BE HOT-APPLIED PAINTED PAVEMENT MARKINGS AND ARE TO BE PAID FOR UNDER ITEM NO. 1209124 - HOT-APPLIED PAINTED PAVEMENT MARKINGS 4" WHITE, AND NO. 1209131 - HOT-APPLIED PAINTED LEGEND, ARROWS AND MARKINGS.
- ANY EXISTING PAVEMENT MARKINGS IN CONFLICT WITH THE TEMPORARY PAVEMENT MARKINGS SHALL BE REMOVED. REMOVAL TO BE PAID FOR UNDER ITEM NO. 1211001 - REMOVAL OF PAVEMENT MARKINGS.
- PRIOR TO THE START OF CONSTRUCTION, THE CONTRACTOR SHALL COORDINATE WITH CTDOT HIGHWAY OPERATIONS TO ENSURE TRAVELERS ARE ADEQUATELY ALERTED TO THE POTENTIAL OF DELAYS CAUSED BY CULVERT REPAIR WORK.
- TWO WEEKS PRIOR TO CONSTRUCTION, THE CONTRACTOR SHALL INSTALL ITEM NO. 1131002 - REMOTE CONTROL CHANGEABLE MESSAGE SIGNS ON THE INTERSECTION OF ORANGE AVENUE AND LOCUST ST, THE INTERSECTION OF WALNUT ST AND ORANGE AVENUE, AND THE INTERSECTION OF ORANGE AVENUE AND STILES ST. THE EXACT LOCATIONS TO BE VERIFIED BY THE ENGINEER PRIOR TO INSTALLATION.
- THE CONTRACTOR MUST PROVIDE ACCESS TO SURROUNDING SCHOOLS FOR SCHOOL BUSES, AS DIRECTED BY THE ENGINEER.
- THE CONTRACTOR SHALL SELECT AN APPROVED SAN BARREL SYSTEM FROM THE CTDOT QUALIFIED PRODUCT LIST (QPL). THE CONTRACTOR SHALL INSTALL THE BARREL ARRAY FOR THE DESIGNATED SPEED OF 55 MPH, AS RECOMMENDED BY THE MANUFACTURER.
- TEMPORARY TRAFFIC BARRIER REQUIRES DE-7 DELINEATORS.

PAVEMENT MARKING ABBREVIATIONS:

WEL - WHITE EDGE LINE

CHANGEABLE MESSAGE SIGN #1:

PRIOR TO CONSTRUCTION MESSAGE 1		DURING CONSTRUCTION MESSAGE 2	
ORANGE AVENUE CONST	MM/DD TO MM/DD	ORANGE AVENUE CONST	USE CAUTION

LEGEND:

- WORK AREA
- TRAFFIC FLOW
- SINGLE POST MOUNTED SIGN
- DOUBLE POST MOUNTED SIGN
- TRAFFIC DRUM
- CONSTRUCTION BARRICADE - TYPE III
- CONSTRUCTION BARRICADE - DETECTABLE
- REMOTE CONTROL CHANGEABLE MESSAGE SIGN (CMS)
- INERTIAL SYSTEM (SANDBARRELS) IMPACT VELOCITY ≥ 55 MPH (TIAS)
- TEMPORARY TRAFFIC BARRIER

LEGEND

- PEDESTRIAN DETOUR ROUTE
- PROPOSED CULVERT REPAIR
- NATURAL STREAMBED MATERIAL/PREFORMED SCOUR HOLE
- EXISTING TRAVELED WAY
- PROPOSED TRAFFIC SHIFT
- PROPOSED ACCESS ROAD
- PROPOSED TOPSOIL AND SEED
- R.O.W. LINE

REV.	DATE	REVISION DESCRIPTION