

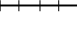






**Legend**

-  Spanish 1000+
-  Spanish 5%+
-  Russian/Polish/Slavic 5%+
-  Other Indo European 5%+
-  CTfastrak Bus Service Area
-  Passenger Rail Lines
-  Colleges/Universities
-  Hospitals
-  Major Employers
-  Shopping Malls
-  Transit Facilities
-  Town Boundaries

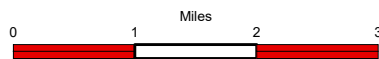
**References**

Bus Service Area: The area contained by a 1/4 mile buffer applied to the bus routes.

Data Source: CTDOT Travel Demand & Air Quality Modeling Unit

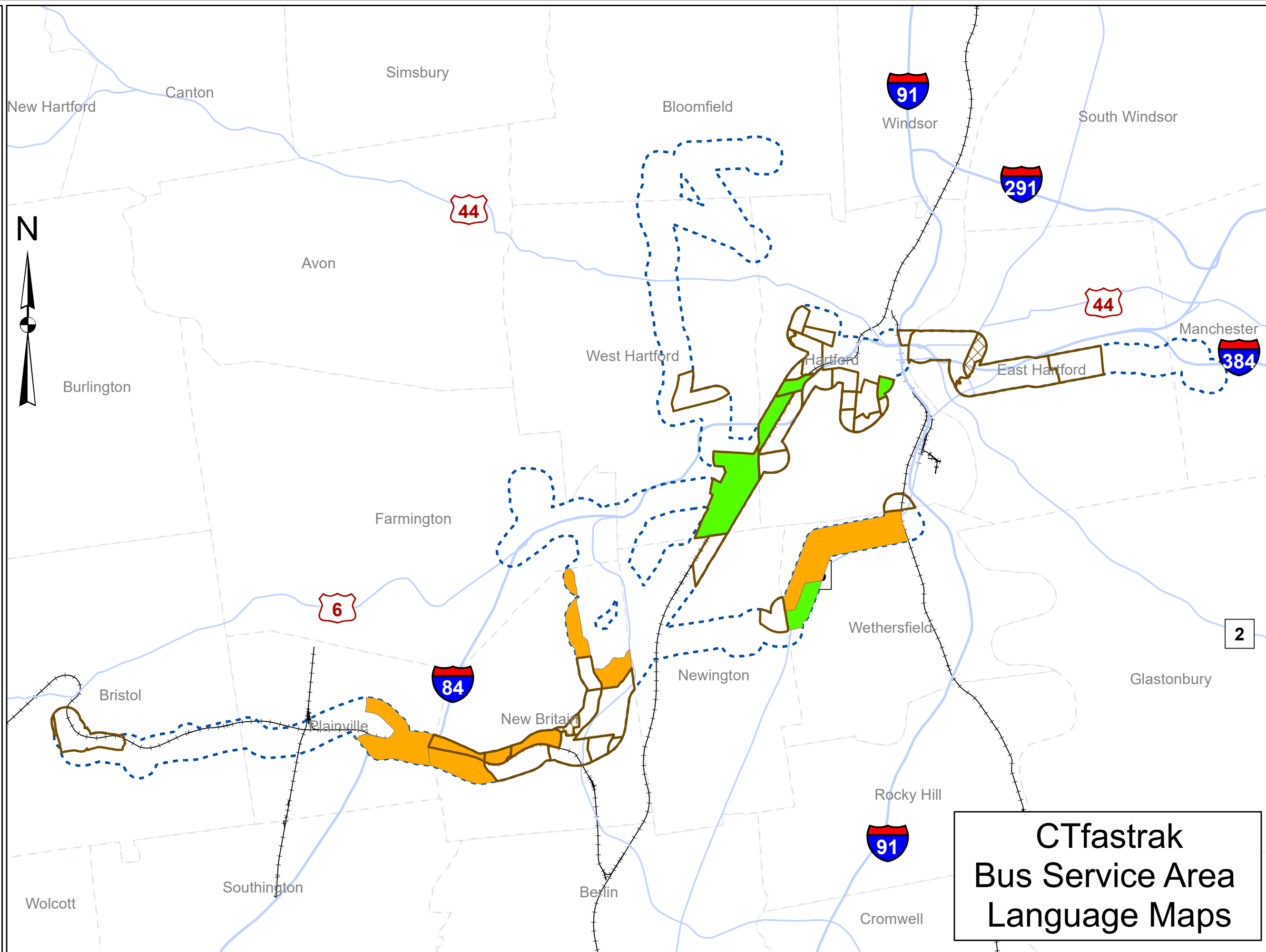
The LEP data is based on the 2013 - 2017 American Community Survey (ACS) 5-year Estimates, Table C16001, 5 years and older.

**Map Scale**



Developed July 2020

This map, developed for internal ConnDOT use, is a cartographic rendering of DOT roadway records. It should not be referenced or incorporated in any manner in legal documents or proceedings



**CTfastrak  
Bus Service Area  
Language Maps**