



CONNECTICUT DEPARTMENT OF PUBLIC HEALTH



CT School Immunization Survey and Exemption Data

Patricia Firmender, MPH

Epidemiologist, Vaccine Preventable Disease Surveillance
Coordinator

Overview

- Data Collection and Limitations
- School Survey Data
- Exemption Portal Data



Data Collection and Limitations

School Survey Data Collection

- All schools are required to complete an annual school immunization survey
 - Enrollment, religious, and medical exemption data reported for all grades Pre-k through 12.
 - Vaccine completion data reported for Pre-k, K, and 7th grade only.
- Data is self-reported by school nurses or school nurse supervisors into a web platform with programmed data checks
 - Instructions and guidance on what constitutes a medical exemption are provided with the survey
- All data reported was to be assessed as of October 1, 2022.

School Survey Data Limitations

- Medical and religious exemptions are not reported by vaccine type on the school survey.
 - Historic legislation prevented more finite data collection; the legislation change may allow us to collect more specific data in future.
- Data is self-reported by school nurses or school nurse supervisors
 - While instruction is provided, there is still the potential for reporting error.

School Survey Data Reporting

Data from the immunization survey are published on the [CT Open Data Portal](#) as they are reported in the survey.

Highlights for 2020-2021 School Year

The COVID-19 pandemic began in the last quarter of 2019 and continued into the 2020-2021 school year. Many schools in Connecticut were operating as either partially or fully remote at the start of the school year and for the months following. The 2020-2021 school immunization survey data was collected during this time.

The percentage of Connecticut kindergarten students receiving required MMR vaccines in the 2020-2021 school year is 95.3%. This is a decrease of 0.9% from the previous year and a drop of 1.8% since 2012-2013. For public schools, the MMR rate is 95.4% and for private schools it is 93.2%. To achieve herd immunity for measles, 95% of the population must be vaccinated or have had the disease.*** Of the schools with more than 30 kindergarten students, 146 schools have MMR rates below 95%, 53 of which have MMR rates below 90%.

Percentage of Vaccinated Kindergarteners, Connecticut, 2012-2021

As reported to CT Department of Public Health annual school immunization survey.

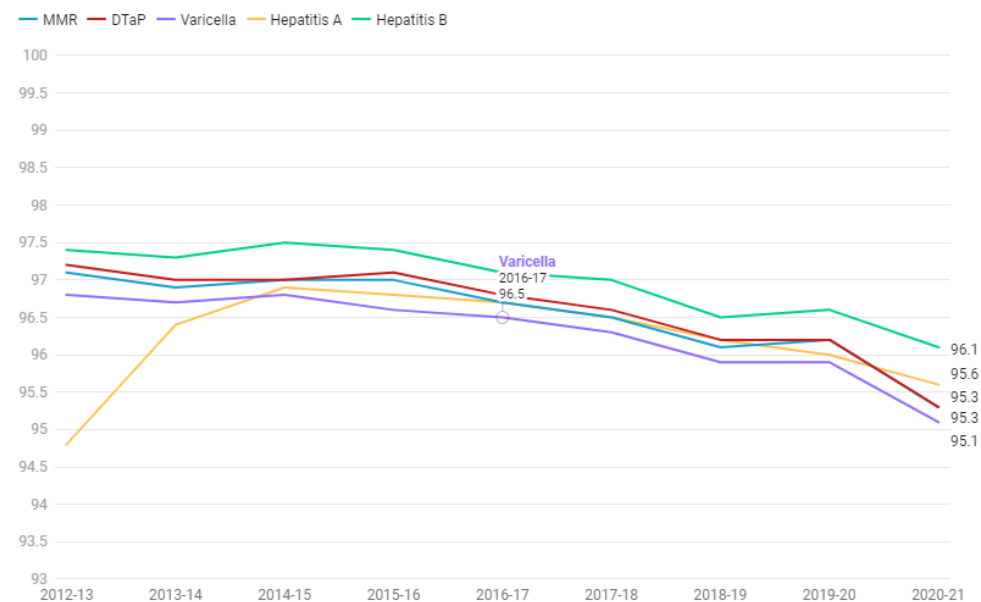


Chart: Version 5.6.22 - Source: CT Department of Public Health - Embed - Download image - Created with Datawrapper

School Immunization Survey Data for 2022- 2023 School Year



Immunization Survey Summary Data for Connecticut Schools 2022-2023

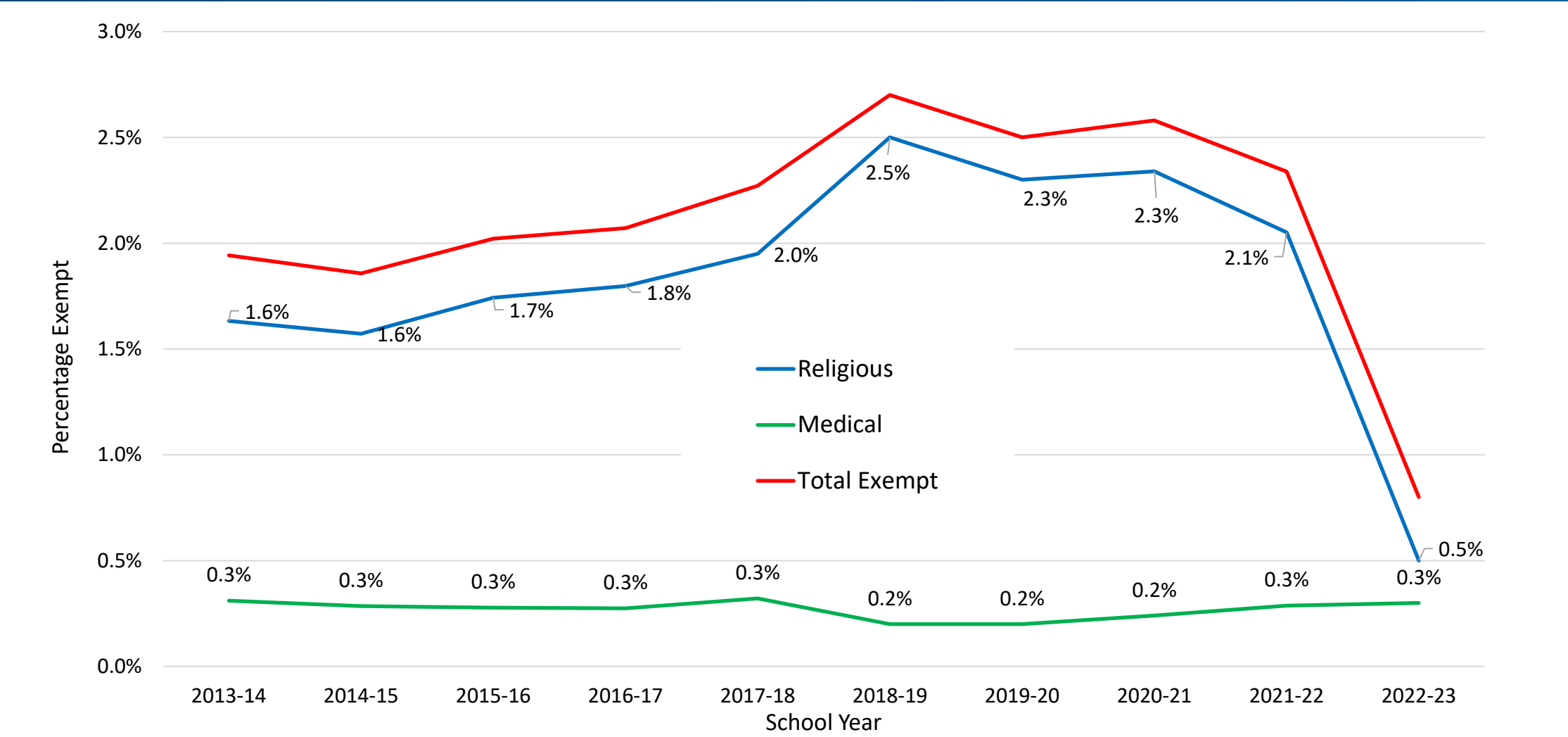
All Grades			
	<u>Public</u>	<u>Private</u>	<u>Total</u>
# of schools	984	207	1,191
# of schools ≥ 30 students	974	184	1,158
Kindergarten (K)			
	<u>Public</u>	<u>Private</u>	<u>Total</u>
# of schools	541	109	650
# of schools ≥ 30 K students	492	18	510
Seventh Grade			
	<u>Public</u>	<u>Private</u>	<u>Total</u>
# of schools	294	141	435
# of schools ≥ 30 7 th grade students	251	27	278

Kindergarten*			
	Median	Min	Max
Religious Exemptions**	1	1	17
Medical Exemptions**	1	1	4
MMR Vaccinated	98.5%	61.5%	100.0%
Seventh Grade*			
	Median	Min	Max
Religious Exemptions**	2	1	16
Medical Exemptions**	1	1	12
MMR Vaccinated	98.1%	73.8%	100.0%
Meningococcal Vaccinated	96.8%	10.5%	100.0%
All Grades*			
	Median	Min	Max
Religious Exemptions**	6	1	130
Medical Exemptions**	2	1	30

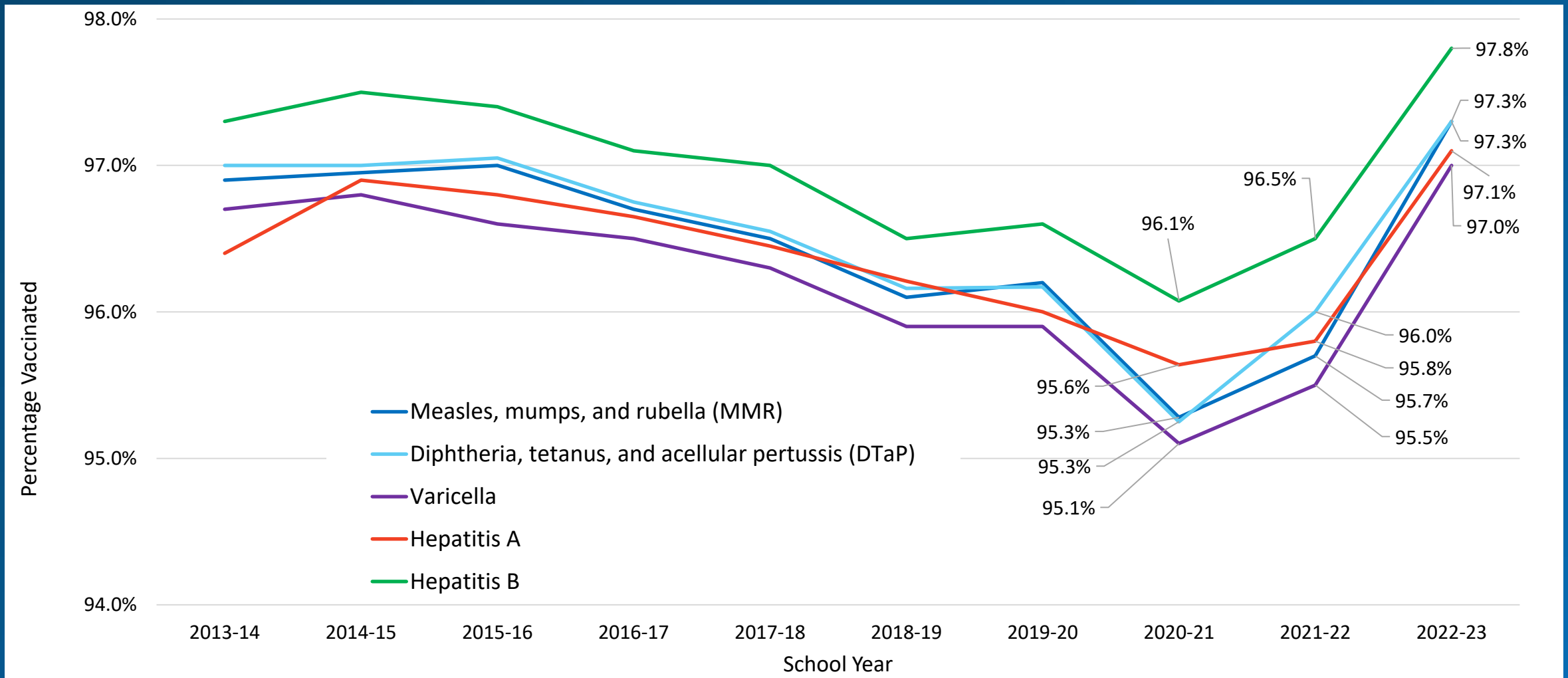
* Includes data from schools with 30 or more students for consistency with publicly reported information.

**Values of 0 have been excluded from these calculations; data reported is for schools with at least 1 reported exemption

Kindergarten Exemption Percentage – Connecticut, 2012-2022

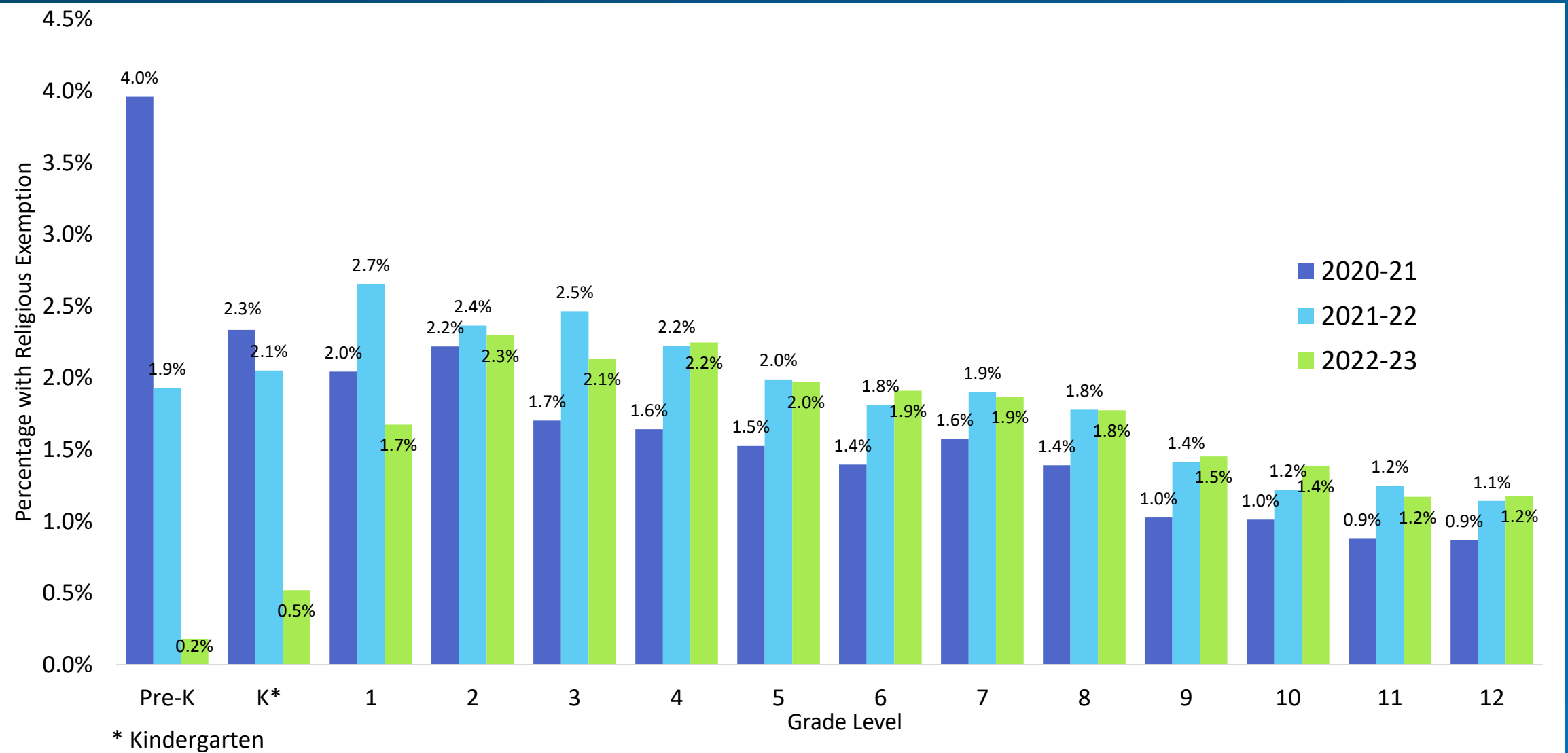


Percentage of Vaccinated Kindergarteners – Connecticut, 2013-2022



Percentage of Religious Exemptions by Grade Level

Connecticut – School Years 2020–2021, 2021–2022, and 2022–2023



* Kindergarten

Medical Exemption Portal Data

As of October 13, 2023

Portal Data Summary



23 Unique
Providers



57 patients with
at least 1
exemption



Maximum # of
exemptions
submitted by a
single provider

Medical Exemption Portal Data by Vaccine

Vaccine	Number Exempt
MMR	43
Varicella	41
Influenza (IIV)	37
Tdap**	36
DTaP	34
Meningococcal (ACWY)	33
Polio (IPV)	31
Influenza (LAIV)	31
Hep A	30
Hep B	29
HiB*	26
Pneumococcal (PCV)*	26

*Not required beyond grade K

** Requirement begins at grade 7

Contact Information

Patricia.Firmender@ct.gov

Office Line: 860-509-7776

DPH.Immunizations@ct.gov

Main Line: 860-509-7929

Questions?