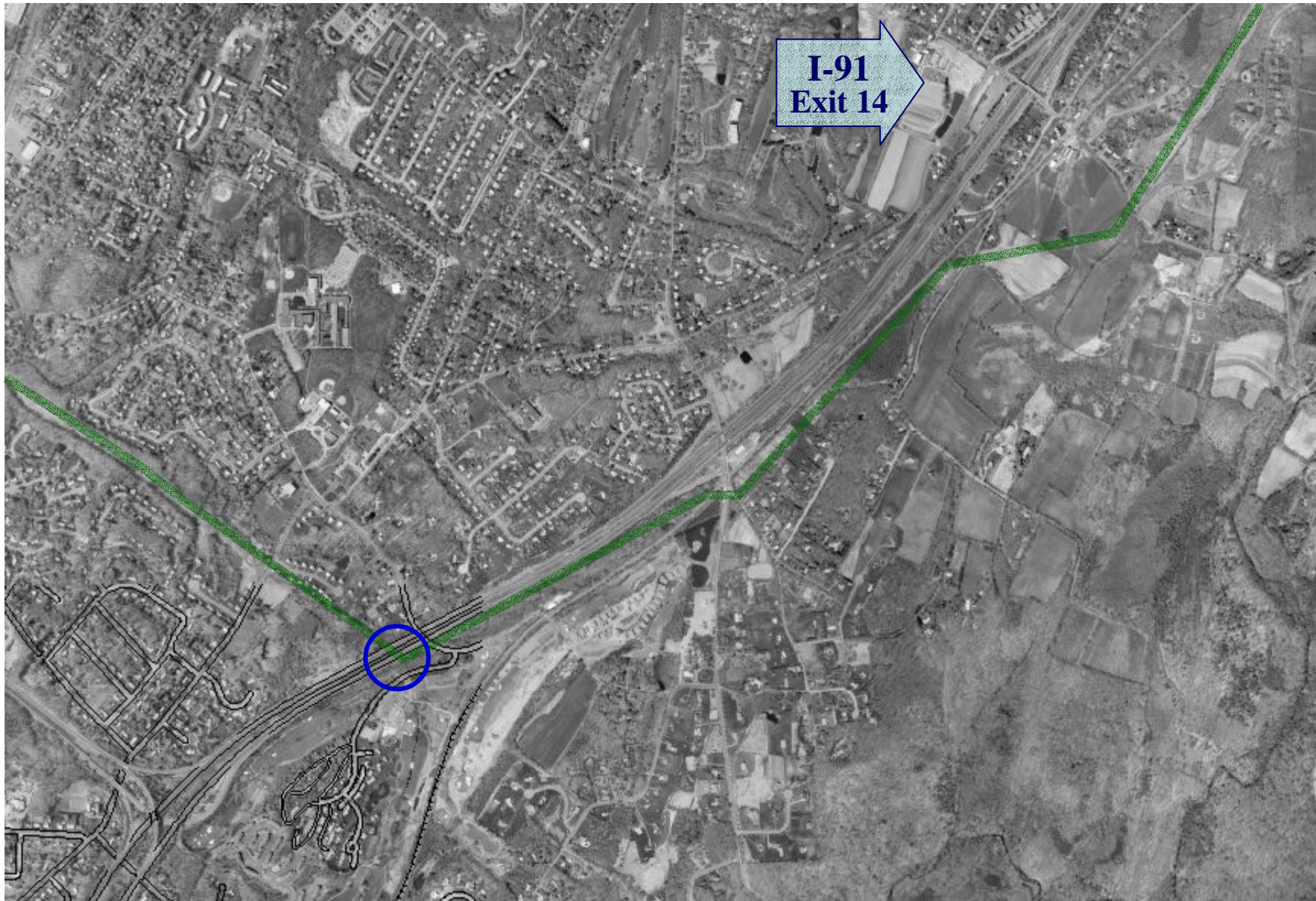
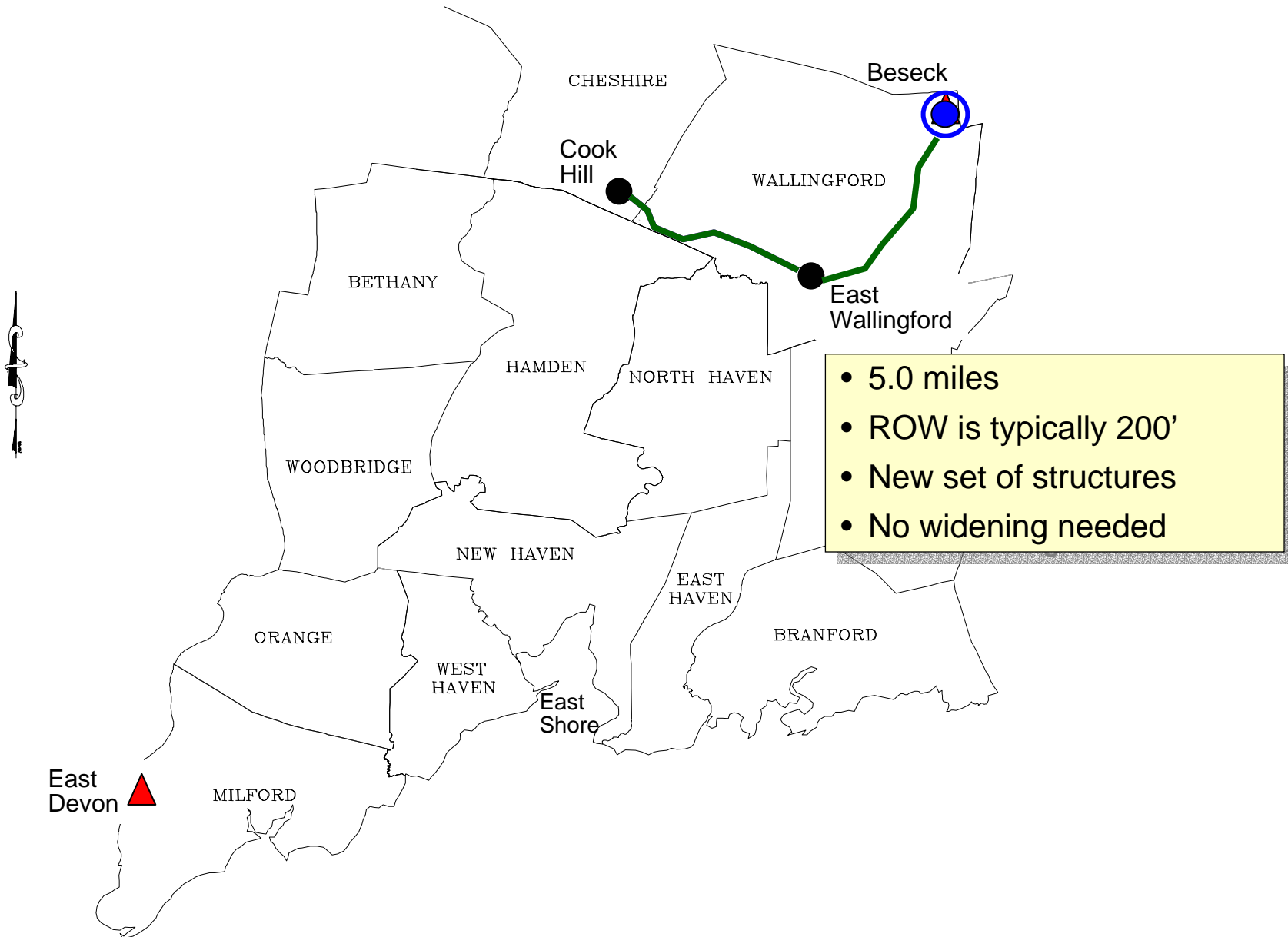


# Beseck to E. Wallingford (3 of 3)



## Segment 2: Beseck to East Devon



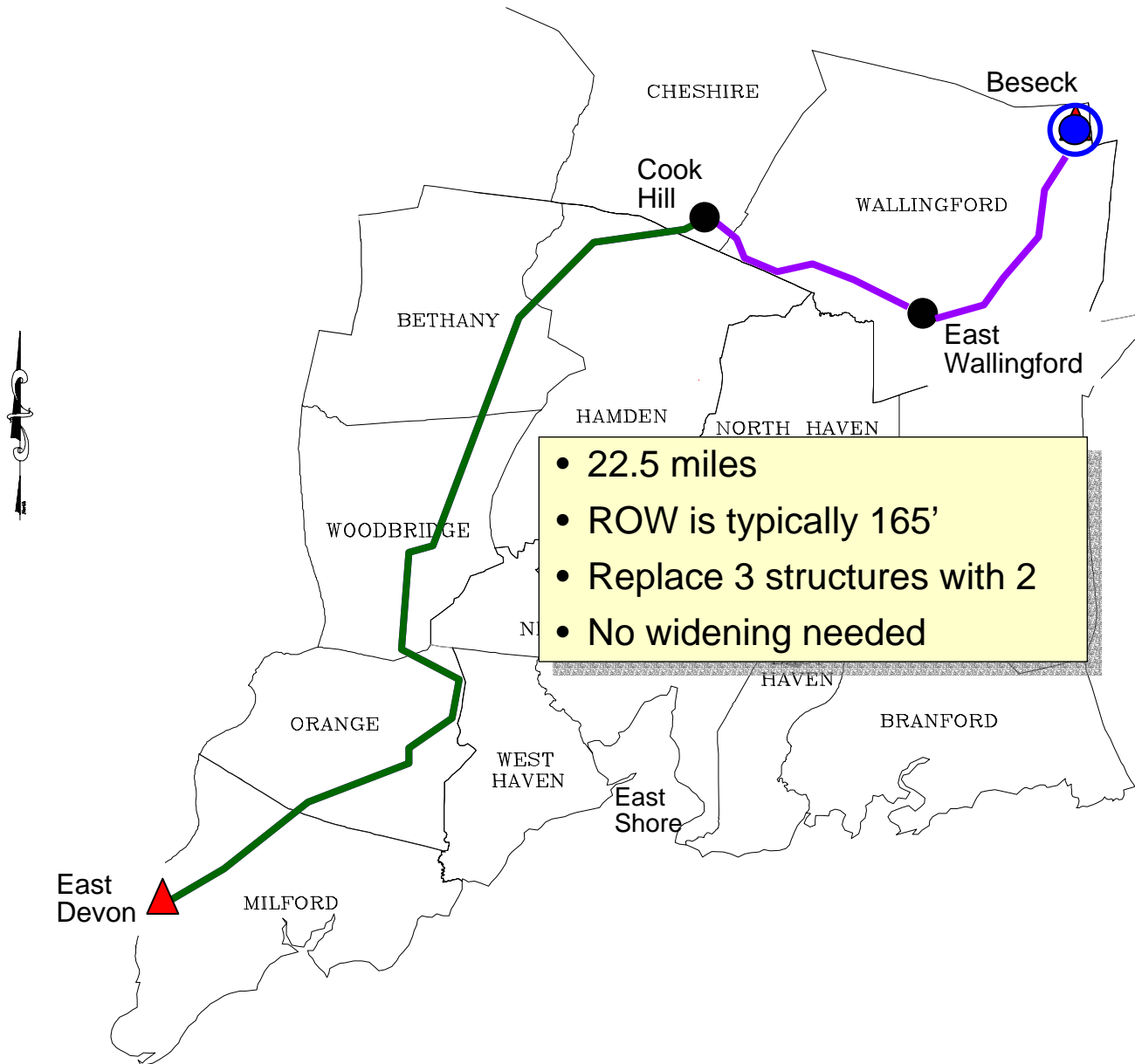
## E. Wallingford to Cook Hill: Wallingford



# E. Wallingford to Cook Hill: Wallingford-Cheshire-Hamden



## Segment 2: Beseck to East Devon



# Three Structures Replaced by Two

**Typical: Orange**



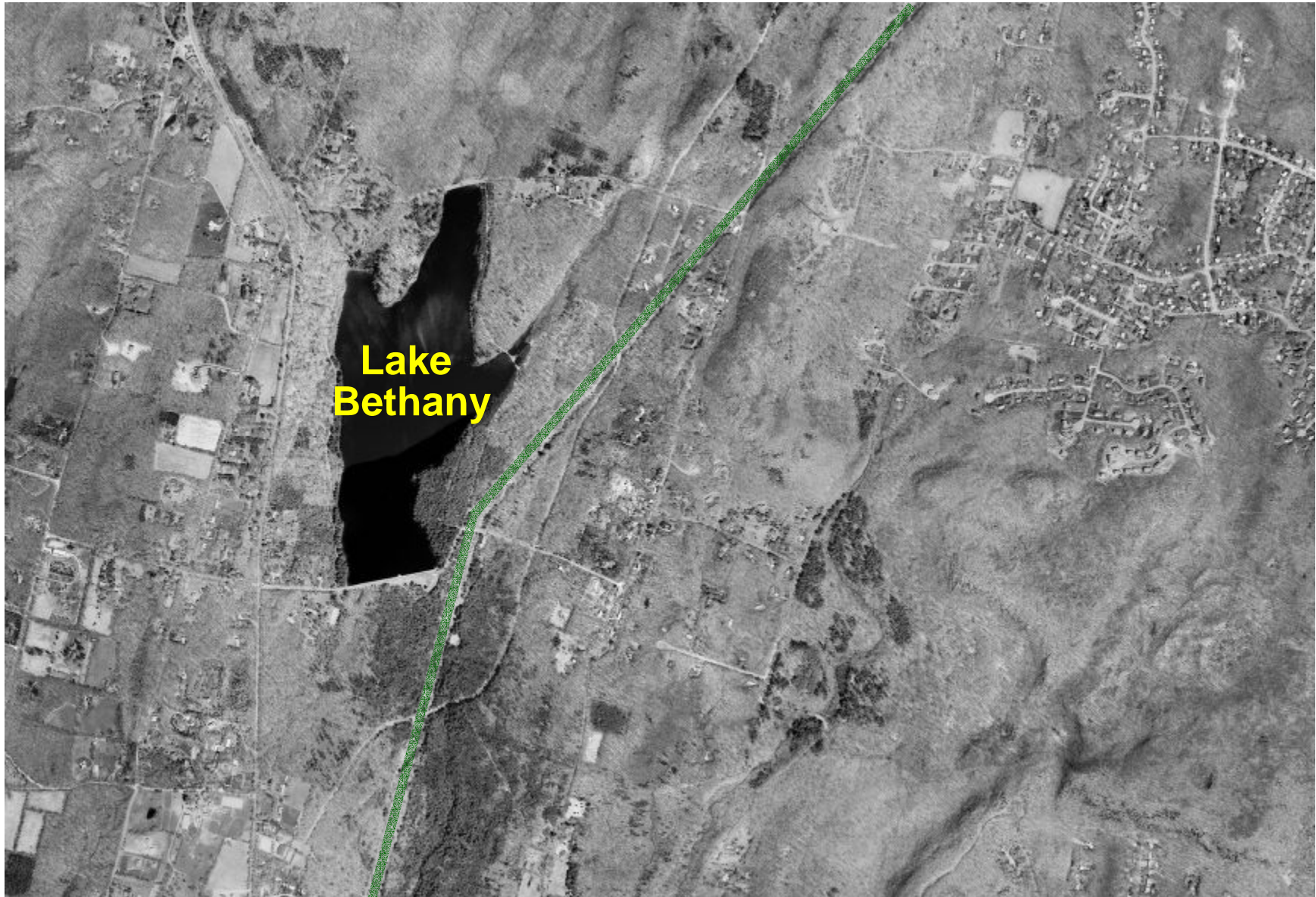
**Typical: Milford**



# Cook Hill to East Devon: Hamden

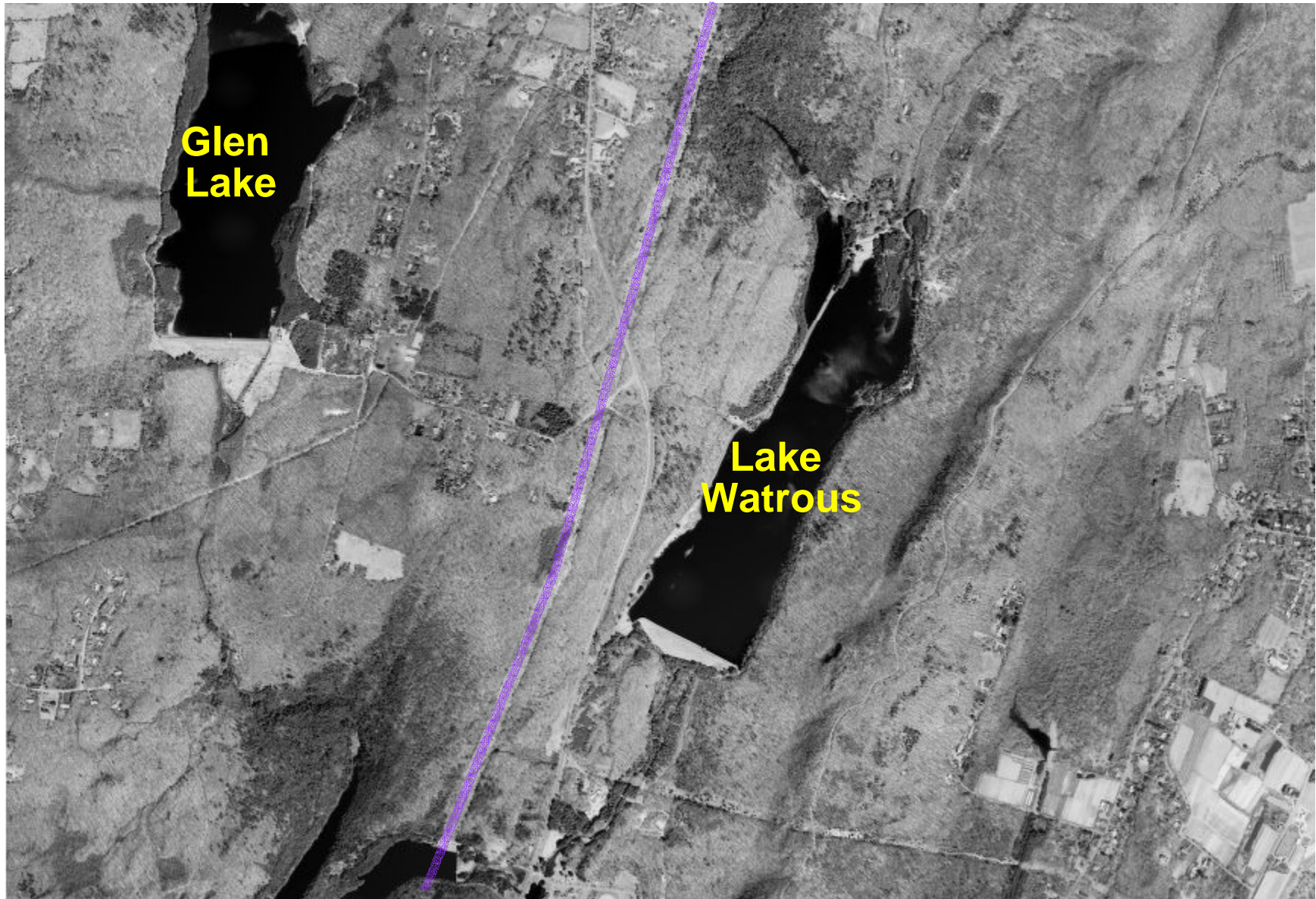


## Cook Hill to East Devon: Bethany

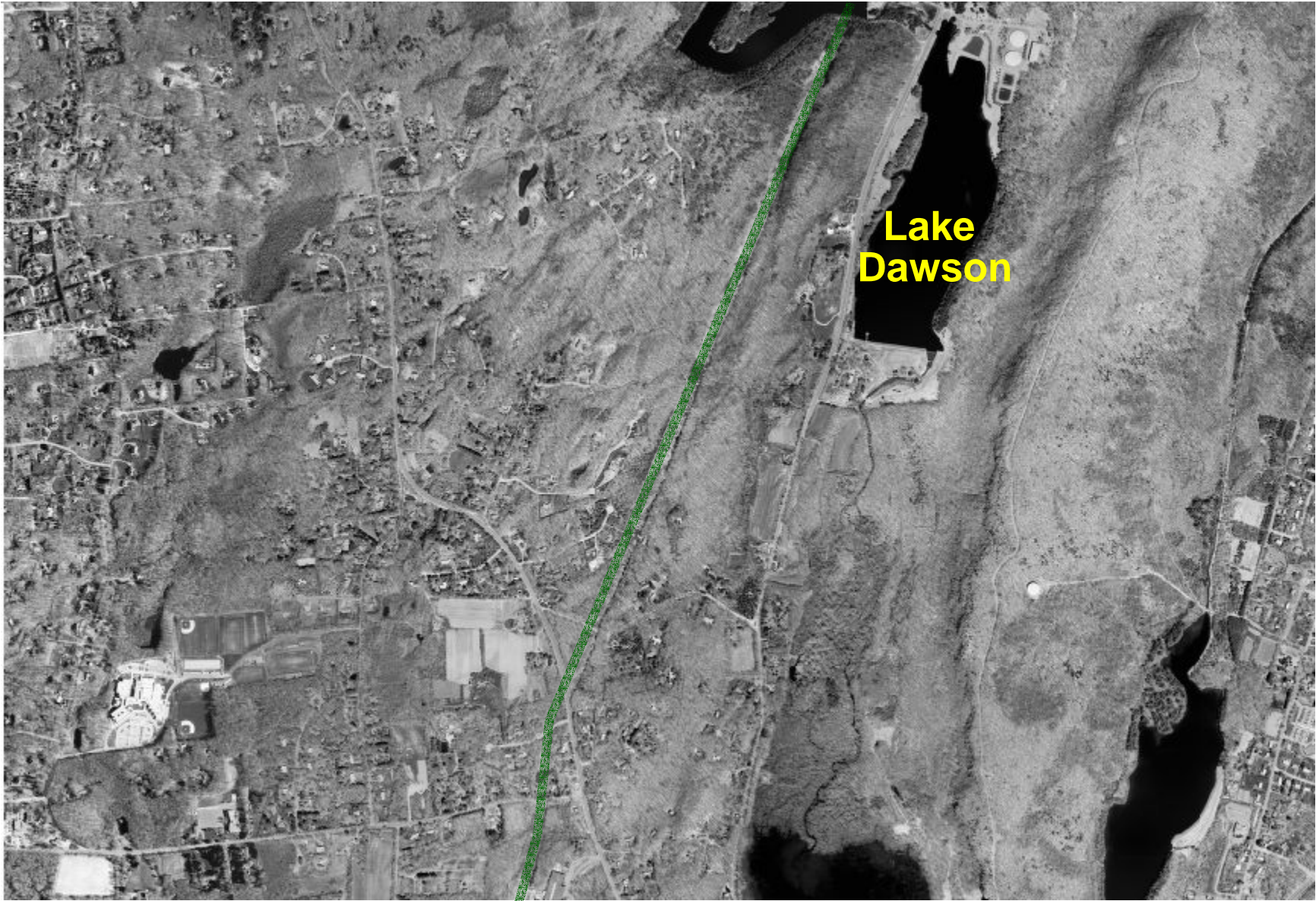




## Cook Hill to East Devon: Woodbridge (1 of 3)



## Cook Hill to East Devon: Woodbridge (2 of 3)



# Cook Hill to East Devon: Woodbridge (3 of 3)



# Cook Hill to East Devon: Woodbridge-Orange



## Cook Hill to East Devon: Orange (1 of 2)



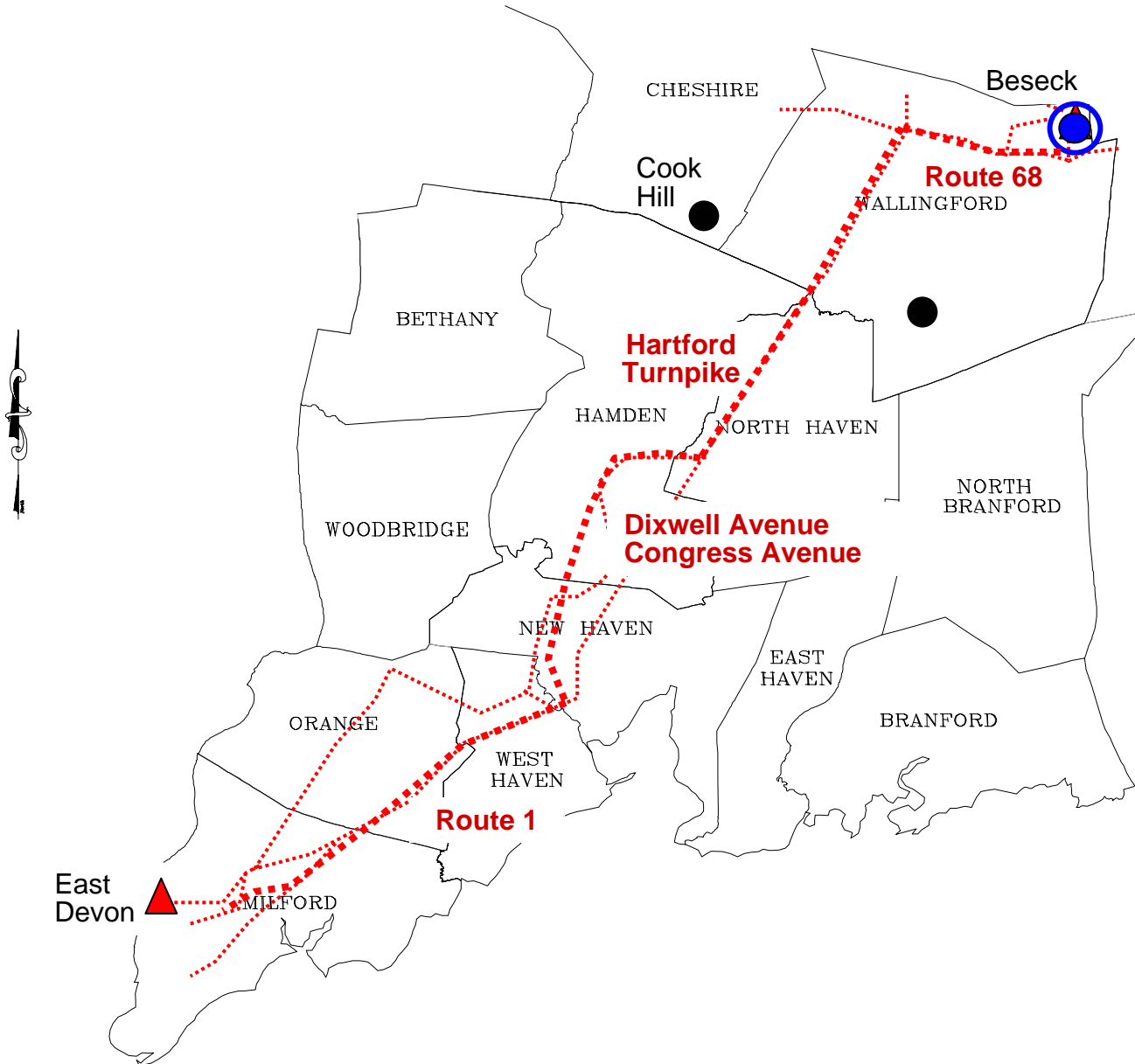
## Cook Hill to East Devon: Orange (2 of 2)



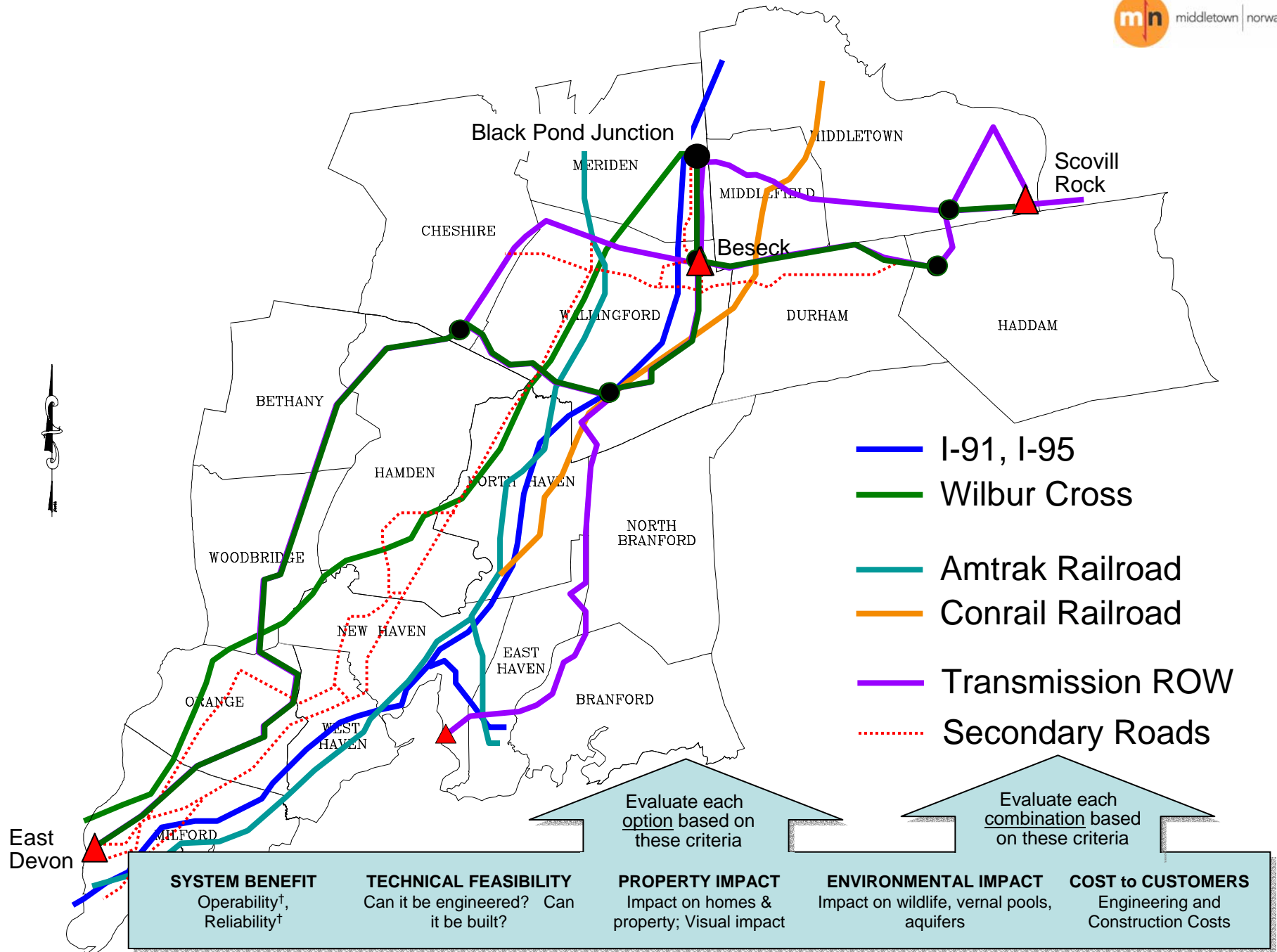
## Cook Hill to East Devon: Milford



# Segment 2: Underground







† Per national and regional reliability standards.