

JAHH-65C-R3B

8-port sector antenna, 2x 698–787, 2x 824–894 and 4x 1695–2360 MHz, 65° HPBW, 3x RET and low bands have diplexers. Internal SBT's on first LB(Port 1) and first HB (Port 5)

- Internal SBT on low and high band allow remote RET control from the radio over the RF jumper cable
- One RET for 700MHz, one RET for 850MHz, and one RET for both high bands to ensure same tilt level for 4x Rx or 4x MIMO
- Internal filter on low band and interleaved dipole technology providing for attractive, low wind load mechanical package
- Separate RS-485 RET input/output for low and high band

Electrical Specifications

Frequency Band, MHz	698–787	824–894	1695–1880	1850–1990	1920–2200	2300–2360
Gain, dBi	15.5	16.2	18.2	18.6	18.7	18.7
Beamwidth, Horizontal, degrees	67	64	62	60	61	64
Beamwidth, Vertical, degrees	9.8	8.4	5.7	5.3	5.0	4.5
Beam Tilt, degrees	0–11	0–11	2–12	2–12	2–12	2–12
USLS (First Lobe), dB	23	22	20	20	21	20
Front-to-Back Ratio at 180°, dB	30	30	29	35	38	39
Isolation, dB	25	25	25	25	25	25
Isolation, Intersystem, dB	30	30	30	30	30	30
VSWR Return Loss, dB	1.5 14.0	1.5 14.0	1.5 14.0	1.5 14.0	1.5 14.0	1.5 14.0
PIM, 3rd Order, 2 x 20 W, dBc	-153	-153	-153	-153	-153	-153
Input Power per Port at 50°C, maximum, watts	200	200	250	250	250	200
Polarization	±45°	±45°	±45°	±45°	±45°	±45°
Impedance	50 ohm	50 ohm	50 ohm	50 ohm	50 ohm	50 ohm

Electrical Specifications, BASTA*

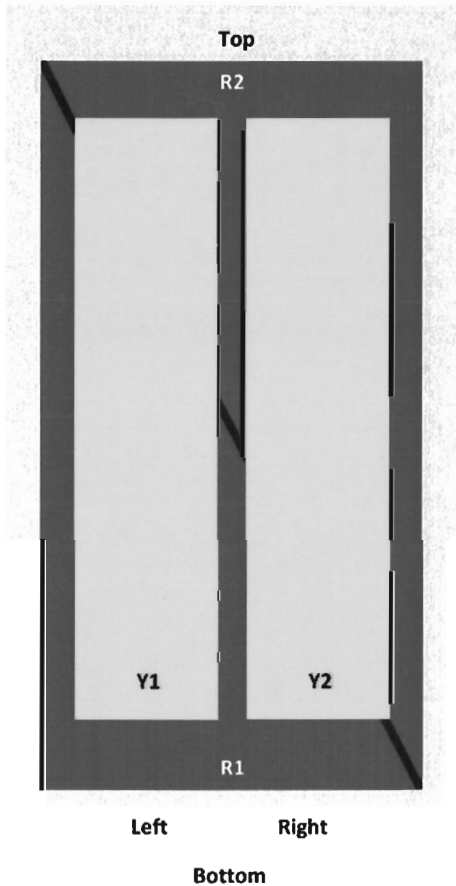
Frequency Band, MHz	698–787	824–894	1695–1880	1850–1990	1920–2200	2300–2360
Gain by all Beam Tilts, average, dBi	15.2	16.0	17.5	18.2	18.3	18.3
Gain by all Beam Tilts Tolerance, dB	±0.3	±0.4	±0.7	±0.5	±0.5	±0.7
Gain by Beam Tilt, average, dBi	0° 15.2	0° 15.8	2° 17.2	2° 17.8	2° 17.8	2° 17.8
	5° 15.2	5° 16.0	7° 17.6	7° 18.4	7° 18.5	7° 18.4
	11° 15.2	11° 16.0	12° 17.5	12° 18.3	12° 18.4	12° 18.2
Beamwidth, Horizontal Tolerance, degrees	±1.1	±1.6	±3.9	±3	±3	±4.6
Beamwidth, Vertical Tolerance, degrees	±0.5	±0.4	±0.3	±0.2	±0.3	±0.2
USLS, beampeak to 20° above beampeak, dB	18	17	16	16	16	15
Front-to-Back Total Power at 180° ± 30°, dB	25	23	25	31	29	30
CPR at Boresight, dB	23	22	20	23	22	19
CPR at Sector, dB	12	13	10	13	11	8

* CommScope® supports NGMN recommendations on Base Station Antenna Standards (BASTA). To learn more about the benefits of BASTA, download the [whitepaper Time to Raise the Bar on BSAs](#).

JAHH-65C-R3B

Array Layout

JAHH-65A-R3B JAHH-65B-R3B JAHH-65C-R3B



Array	Freq (MHz)	Conns	RET (SRET)	AISG RET UID
R1	698-798	1-2	1	ANXXXXXXXXXXXXX1
R2	824-894	3-4	2	ANXXXXXXXXXXXXX2
Y1	1695-2360	5-6	3	ANXXXXXXXXXXXXX3
Y2	1695-2360	7-8		

View from the front of the antenna

(Sizes of colored boxes are not true depictions of array sizes)

General Specifications

Operating Frequency Band	1695 – 2360 MHz 698 – 787 MHz 824 – 894 MHz
Antenna Type	Sector
Band	Multiband
Performance Note	Outdoor usage
Total Input Power, maximum	800 W @ 50 °C

Mechanical Specifications

RF Connector Quantity, total	8
RF Connector Quantity, low band	4
RF Connector Quantity, high band	4

Product Specifications

COMMSCOPE®

JAHH-65C-R3B

RF Connector Interface	4.3-10 Female
Color	Light gray
Grounding Type	RF connector body grounded to reflector and mounting bracket
Radiator Material	Aluminum Low loss circuit board
Radome Material	Fiberglass, UV resistant
Reflector Material	Aluminum
RF Connector Location	Bottom
Wind Loading, frontal	424.0 N @ 150 km/h 95.3 lbf @ 150 km/h
Wind Loading, lateral	360.0 N @ 150 km/h 80.9 lbf @ 150 km/h
Wind Loading, maximum	897.0 N @ 150 km/h 201.7 lbf @ 150 km/h
Wind Speed, maximum	241 km/h 150 mph

Dimensions

Length	2432.0 mm 95.7 in
Width	350.0 mm 13.8 in
Depth	208.0 mm 8.2 in
Net Weight, without mounting kit	36.4 kg 80.2 lb

Remote Electrical Tilt (RET) Information

Input Voltage	10–30 Vdc
Internal Bias Tee	Port 1 Port 5
Internal RET	High band (1) Low band (2)
Power Consumption, idle state, maximum	2 W
Power Consumption, normal conditions, maximum	13 W
Protocol	3GPP/AISG 2.0 (Single RET)
RET Interface	8-pin DIN Female 8-pin DIN Male
RET Interface, quantity	2 female 2 male

Packed Dimensions

Length	2570.0 mm 101.2 in
Width	460.0 mm 18.1 in
Depth	350.0 mm 13.8 in
Shipping Weight	51.0 kg 112.4 lb

Regulatory Compliance/Certifications

Agency	Classification
RoHS 2011/65/EU	Compliant by Exemption
China RoHS SJ/T 11364-2006	Above Maximum Concentration Value (MCV)
ISO 9001:2008	Designed, manufactured and/or distributed under this quality management system



JAHH-65C-R3B

Included Products

BSAMNT-3 — Wide Profile Antenna Downtilt Mounting Kit for 2.4 - 4.5 in (60 - 115 mm) OD round members. Kit contains one scissor top bracket set and one bottom bracket set.

* Footnotes

Performance Note Severe environmental conditions may degrade optimum performance

ALCATEL-LUCENT B13 RRH4X30-4R

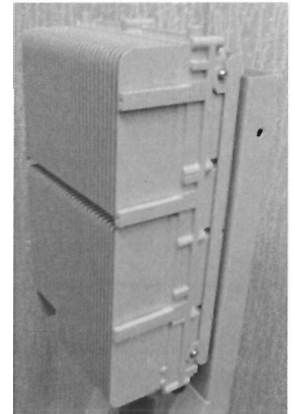
Alcatel-Lucent B13 Remote Radio Head 4x30-4R is the newest addition of Remote Radio Head to the extended product line of Alcatel-Lucent's distributed Base Station solutions, aimed at facilitating smooth RF site acquisition and related civil engineering.

Supporting 2Tx/4Tx MIMO and 4-way Rx diversity, Alcatel-Lucent B13 RRH4x30-4R allows operators to have a compact radio solution to deploy LTE in the 700U band (700 MHz, 3GPP band 13), providing them with the means to achieve high capacity, high quality and high coverage with minimum site requirements.

The Alcatel-Lucent B13 RRH4x30-4R product has four transmit RF paths, offering the possibility to **select, via software only, 2Tx or 4Tx MIMO configurations** with either 2x60 W or 4x30 W RF output power. It supports also 4-way Rx diversity and up to 10MHz instantaneous bandwidth.

The Alcatel-Lucent B13 RRH4x30-4R is a near zero-footprint solution and operates noise free, simplifying negotiations with site property owners and minimizing environmental impacts.

Its compactness and slim design makes the Alcatel-Lucent B13 RRH4x30-4R easy to install close to the antenna: operators can therefore locate this Remote Radio Head where RF design conditions are deemed ideal, minimizing trade-offs between available sites and RF optimum sites, together with reducing the RF feeder needs and installation costs.

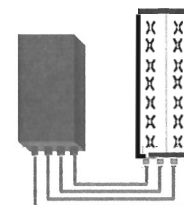


FEATURES

- Supporting LTE in 700 MHz band (700U, 3GPP band 13)
- LTE 2Tx or 4Tx MIMO (SW switchable)
- Output power: Up to 2x60W or 4x30W
- 10MHz LTE carrier with 4Rx Diversity
- Convection-cooled (fan-less)
- Supports AISG 2.0 ALD devices (RET, TMA) through RS485 or RF ports

BENEFITS

- Compact to reduce additional footprint when adding LTE in 700U band
- MIMO scheme operation selection (2Tx or 4Tx) by software only
- Improves downlink spectral efficiency through MIMO4
- Increases LTE coverage thanks to 4Rx diversity capability and best in class Rx sensitivity
- Flexible mounting options: Pole or Wall



4x30W with 4T4R
or
2x60W with 2T4R
Can be switched between
modes via SW w/o site
visit

TECHNICAL SPECIFICATIONS

Features & performance	
Number of TX/RX paths	4 duplexed (either 4T4R or 2T4R by SW)
Frequency band	U700 (C) (3GPP bands 13): DL: 746 - 756 MHz / UL: 777 - 787 MHz
Instantaneous bandwidth - #carriers	10MHz – 1 LTE carrier (In 10MHz occupied bandwidth)
LTE carrier bandwidth	10 MHz
RF output power	2x60W or 4x30W (by SW)
Noise figure – RX Diversity scheme	2 dB typ. (<2.5 dB max) – 2 or 4 way Rx diversity
Sizes (HxWxD) in mm (in.)	550 x 305 x 230 (21.6" x 12.0" x 9") (with solar shield)
Volume in L	38 (with solar shield)
Weight in kg (lb) (w/o mounting HW)	26 (57.2) (with solar shield)
DC voltage range	-40.5 to -57V at full performance, -38 to -57V with relaxation on power consumption
DC power consumption	550W typical @100% RF load (in 2Tx or 4TX mode)
Environmental conditions	-40°C (-40°F) /+55°C (+131°F) IP65
Wind load (@150km/h or 93mph)	Frontal:<200N / Lateral :<150N
Antenna ports	4 ports 7/16 DIN female (50 ohms) VSWR < 1.5
CPRI ports	2 CPRI ports (HW ready for Rate7, 9.8 Gbps) SFP single mode dual fiber
AISG interfaces	1 AISG2.0 output (RS485) Integrated Smart Bias Tees (x2)
Misc. Interfaces	4 external alarms (1 connector) – 4 RF Tx & 4 RF Rx monitor ports - 1 DC connector (2 pins)
Installation conditions	Pole and wall mounting
Regulatory compliance	3GPP 36.141 / 3GPP 36.113 / GR-1089-CORE / GR-3108-CORE / UL 60950-1 / FCC Part 27

www.alcatel-lucent.com Alcatel, Lucent, Alcatel-Lucent and the Alcatel-Lucent logo are trademarks of Alcatel-Lucent. All other trademarks are the property of their respective owners. The information presented is subject to change without notice. Alcatel-Lucent assumes no responsibility for inaccuracies contained herein.
Copyright © 2014 Alcatel-Lucent. All Rights Reserved

ALCATEL-LUCENT B66A RRH4X45

The Alcatel-Lucent B66a Remote Radio Head 4x45 is the newest addition of Remote Radio Head to the extended product line of Alcatel-Lucent's distributed Base Station solutions, aimed at facilitating smooth RF site acquisition and related civil engineering. Its operational range covers beyond that of B4 (AWS) and B10 (AWS+).

Supporting 2Tx/4Tx MIMO and 2-way/4-way Rx diversity, the Alcatel-Lucent B66a RRH4x45 allows operators to have a compact radio solution to deploy LTE in the 2100 band (3GPP band 4, 10, and 66), providing them with the means to achieve high capacity, high quality, high reliability, large instantaneous bandwidth, and high coverage with minimum site requirements.

The Alcatel-Lucent B66a RRH4x45 product has four transmit RF paths, offering the possibility to **select, via software only, 2Tx or 4Tx MIMO configurations** with either 2x90W or 4x45W RF output power. It also supports 4-way Rx diversity at the 70 MHz instantaneous bandwidth.



The Alcatel-Lucent B66a RRH4x45 is a compact (near zero-footprint) solution and operates noise free, simplifying negotiations with site property owners and minimizing environmental impacts.

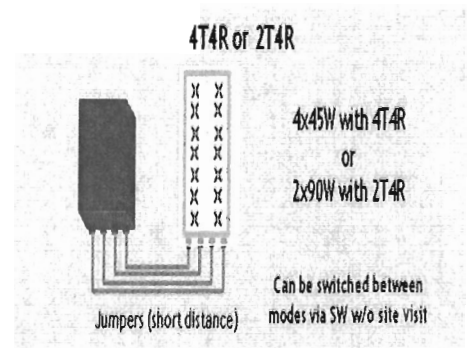
Its compactness and slim design makes the Alcatel-Lucent B66a RRH4x45 easy to install close to the antenna: operators can therefore locate this Remote Radio Head where RF design conditions are deemed ideal, minimizing trade-offs between available sites and RF optimum sites, together with reducing the RF feeder needs and installation costs.

FEATURES

- Supporting LTE in 2110 - 2180 MHz band/DL, 1710-1780MHz/UL (3GPP band 4, 10, and 66a)
- LTE 2Tx or 4Tx MIMO (SW selectable)
- Configuration: 2T2R/2T4R/4T4R
- Output power: Up to 2x90W or 4x45W (SW configurable)
- 70MHz LTE carrier with 4Rx Diversity
- Convection-cooled (fan-less)
- Supports AISG 2.0 ALD devices (RET, TMA) through RS485 or RF ports

BENEFITS

- Compact to reduce additional footprint when adding LTE in AWS 1-3 band
- Selection of MIMO configuration (2Tx or 4Tx) by software only
- Improves downlink spectral efficiency through 4Tx MIMO
- Increases LTE coverage thanks to 4Rx diversity capability and best in class Rx sensitivity
- Flexible mounting options: Pole or Wall



TECHNICAL SPECIFICATIONS

Features & Performance	
Number of TX/RX paths	4 duplexed (either 4T4R or 2T4R selectable by SW)
Frequency band	AWS 1-3, B4/B66a DL: 2110-2180 MHz / UL: 1710-1780 MHz
Instantaneous bandwidth - #carriers	70 MHz – 4 LTE MIMO carriers (in 70 MHz occupied bandwidth)
LTE carrier bandwidth	5, 10, 15, 20 MHz
RF output power	2x90W or 4x45W (selectable by SW)
Noise figure – RX Diversity scheme Receiver Sensivity (FRC A1-3)	2 dB typical (<2.5 dB max) – 2 or 4 way Rx diversity -104.5 dBm maximum
Sizes (HxWxD) in mm (in.)	655x299x182 (25.8x11.8x7.2) (with solar shield) 640x290x160 (25.2x11.4x6.3) (without solar shield)
Volume in Liters	35.5 (with solar shield) 29.7 (without solar shield)
Weight in kg (lb) (w/o mounting HW)	25.8kg (56.8lb) (with solar shield)
DC voltage range	Nominal: -48V, -40.5 to -57V at full performance, -38 to -57V with relaxation on power consumption
DC power consumption	750W typical @100% RF load (in 2Tx or 4Tx mode); Add 58W for 2A*29V for AISG
Environmental conditions	-40°C (-40°F) / +55°C (+131°F) UL50E Type 4 Enclosure
Wind load (@150km/h or 93mph)	250N (56lb) Frontal/150N (34lb) Lateral
Antenna ports	4 ports 4.3-10 female (50 ohms) VSWR < 1.5
CPRI ports	2 CPRI ports (HW ready for Rate 7, 9.8 Gbps) SFP: SMDF (HW supports also SMSF and MMDF)
AISG interfaces	1 AISG 2.0 output (RS485) Integrated Smart Bias Tees (x2)
Misc. Interfaces	4 external alarms (1 connector) 1 DC connector (2 pins)
Installation conditions	Pole and wall mounting
Regulatory compliance	3GPP 36.141 / 3GPP 36.113 / GR-487 / GR-1089-CORE / GR-3108-CORE / UL 60950-1 / FCC Part 27 / FCC Part 15 / GR-3178-CORE

www.alcatel-lucent.com Alcatel, Lucent, Alcatel-Lucent and the Alcatel-Lucent logo are trademarks of Alcatel-Lucent. All other trademarks are the property of their respective owners. The information presented is subject to change without notice. Alcatel-Lucent assumes no responsibility for inaccuracies contained herein. Copyright © 2016 Alcatel-Lucent. All Rights Reserved

SDC20 | 2.5L | 20 kW - AC

INDUSTRIAL DIESEL GENERATOR SET

EPA Certified Stationary Emergency

Standby Power Rating

20 kW AC, 60 Hz

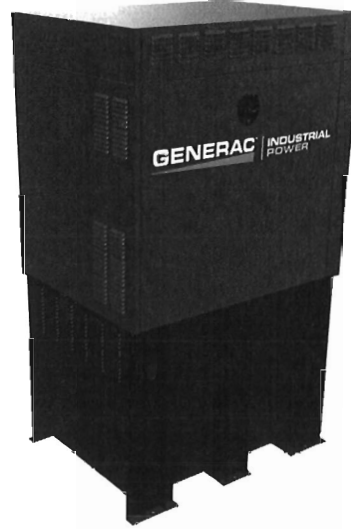


Image used for illustration purposes only



*Built in the USA using domestic and foreign parts

Codes and Standards

Generac products are designed to the following standards:



UL2200, UL508, UL142, UL489



NFPA 37, 70, 99, 110



NEC700, 701, 702, 708



ISO 3046, 7637, 8528, 9001



NEMA ICS10, MG1, 250, ICS6, AB1



ANSI C62.41

Powering Ahead

For over 50 years, Generac has provided innovative design and superior manufacturing.

Generac ensures superior quality by designing and manufacturing most of its generator components, including alternators, enclosures and base tanks, control systems and communications software.

Generac gensets utilize a wide variety of options, configurations and arrangements, allowing us to meet the standby power needs of practically every application.

Generac searched globally to ensure the most reliable engines power our generators. We choose only engines that have already been proven in heavy-duty industrial applications under adverse conditions.

Generac is committed to ensuring our customers' service support continues after their generator purchase.

STANDARD OPTIONS**ENGINE SYSTEM**

- Oil Drain Extension
- Air Cleaner with Service Indicator
- Fan Guard
- Stainless Steel Flexible Exhaust Connection
- Exhaust Silencer with Drain
- Factory Filled Oil & Coolant

Fuel System

- Primary Fuel Filter

Cooling System

- 120V AC Coolant Heater
- Closed Coolant Recovery System
- UV/Ozone Resistant Hoses
- Factory-Installed Radiator
- 50/50 Ethylene Glycol Antifreeze
- Radiator Drain Extension

Electrical System

- Battery Charging Alternator
- AGM Spill Proof Battery
- Battery Cables
- Rubber-Booted Engine Electrical Connections
- Solenoid Activated Starter Motor

ALTERNATOR SYSTEM

- Class H Insulation Material
- Vented Rotor
- 2/3 Pitch
- Skewed Stator
- Auxiliary Voltage Regulator Power Winding
- Amortisseur Winding
- Brushless Excitation
- Sealed Bearings
- Automated Manufacturing (Winding, Insertion, Lacing and Varnishing)
- Rotor Dynamically Spin Balanced
- Full Load Capacity Alternator
- Protective Thermal Switch

GENERATOR SET

- Single-Side Service
- Internal Genset Puck Style Vibration Isolators
- Separation of Circuits- High/Low Voltage
- Silencer Heat Shield
- High Heat Wrapped Exhaust Piping
- Silencer Enclosed Within Generator
- 5 Year Extended Warranty
- Extended Factory Testing
- 12 Gallon System Spill Containment
- 2.5 Gallon Fuel Fill Spill Containment

ENCLOSURE

- Serviceable Items Accessible Through Single Lift-Off Side Door
- High Performance Sound-Absorbing Material
- Gasketed Door
- Stamped Air-Intake Louvers
- Single Door Latch Lockable with Key & Padlock
- Rhino Coat™ - Textured Polyester Powder Coat
- 150 MPH Wind Rating
- 36" Snow Rating
- 4 Point Lift System

FUEL TANK

- UL 142 Compliant
- Double Wall Construction
- Thermal Valve (Fusible Link)
- Factory Pressure Tested (5 psi)
- Rupture Basin Alarm
- Fuel Level Gauge and Sender
- Check Valve in Supply Line
- Fire Rated Hose
- Rhino Coat™ - Textured Polyester Powder Coat
- Stainless Steel Hardware
- Integrated Fork Pockets

CONTROL SYSTEM

- Digital H Control Panel - Dual 4x20 Display
- Programmable Crank Limiter
- 7-Day Programmable Exerciser
- Special Applications Programmable PLC
- RS-232/485
- All-Phase Sensing DVR
- Full System Status
- Utility Monitoring
- 2-Wire Start Compatible
- Power Output (kW)
- Power Factor
- kW Hours, Total & Last Run
- Real/Reactive/Apparent Power
- All Phase AC Voltage
- All Phase Currents
- Oil Pressure
- Coolant Temperature
- Coolant Level
- Engine Speed

- Battery Voltage
- Frequency
- Date/Time Fault History (Event Log)
- Isochronous Governor Control
- Waterproof/Sealed Connectors
- Audible Alarms and Shutdowns
- Not in Auto (Flashing Light)
- Auto/Off/Manual Switch
- E-Stop (Red Mushroom-Type)
- NFPA110 Level I and II (Programmable)
- Customizable Alarms, Warnings, and Events
- Modbus protocol
- Predictive Maintenance Algorithm
- Sealed Boards
- Password Parameter Adjustment Protection
- Single Point Ground
- 15 Channel Data Logging
- 0.2 msec High Speed Data Logging
- Alarm Information Automatically Comes Up On the Display

Alarms

- Generator Run- Dry Contact
- Major Alarm- Dry Contact
- Minor Alarm- Dry Contact
- Low Fuel Alarm- Dry Contact
- Generator Fluid Spill Alarm- Dry Contact
- Alarms & Warnings Time and Date Stamped
- Alarms & Warnings for Transient and Steady State Conditions
- Snap Shots of Key Operation Parameters During Alarms & Warnings
- Alarms and Warnings Spelled Out (No Alarm Codes)

MODEL OPTIONS**CONTROL SYSTEM**

- 21 Light Annunciator- Shipped Loose Kit and Field Installed
- External E-Stop-Shipped Loose Kit and Field Installed

ENCLOSURE

- Aluminum Enclosure
- Extreme Cold Weather Kit (-40°C)- Shipped Loose Kit and Field Installed

TANKS

- MDEQ 5 Gallon Fuel Spill Box with 90% Fill Alarm-Shipped Loose Kit and Field Installed
- MDEQ Fuel Vent- Shipped Loose Kit and Field Installed

SDC20 | 2.5L | 20 kW - AC

INDUSTRIAL DIESEL GENERATOR SET

EPA Certified Stationary Emergency

APPLICATION AND ENGINEERING DATA

ENGINE SPECIFICATIONS

General

Make	Mitsubishi
EPA Emissions Compliance	Interim Tier 4
Cylinder #	4
Type	In-Line
Displacement - L (Cu In)	2.5 (158)
Bore - mm (in)	88 (3.5)
Stroke - mm (in)	103 (4.1)
Compression Ratio	22:1
Intake Air Method	Naturally Aspirated

Engine Governing

Governor	Electronic Isochronous
Frequency Regulation (Steady State)	± 0.25%

Lubrication System

Oil Pump Type	Trochoid Gear Pump
Oil Filter Type	Filtering Paper, Full Flow
Crankcase Capacity - L (qts)	6.5 (6.9)

Cooling System

Cooling System Type	Forced Circulation
Water Pump Type	Centrifugal Pump
Fan Type	Pusher
Fan Speed (rpm)	2376
Fan Diameter - mm (in)	380 (15)
Coolant Heater Wattage	1000
Coolant Heater Standard Voltage	120

Fuel System

Fuel Type	Ultra Low Sulfur Diesel #2
Fuel Specifications	ASTM
Fuel Filtering (microns)	6
Fuel Inject Pump Make	Bosch
Injector Type	Engine Driven Gear
Engine Type	Diesel
Fuel Supply Line - mm (in.)	6.6 (0.26)

Engine Electrical System

System Voltage	12 VDC
Battery Charger Alternator	12V-50A
Battery Size	650 CCA
Battery Group	35
Battery Voltage	12 VDC
Ground Polarity	Negative

ALTERNATOR SPECIFICATIONS

Standard Model	Mecc Alte ECP 28-2L/4
Poles	4
Field Type	Revolving
Insulation Class - Rotor	H
Insulation Class - Stator	H
Total Harmonic Distortion	<5%
Telephone Interference Factor (TIF)	<45
Standard Excitation	Brushless

Bearings	Dual Sealed
Coupling	Belt, Pulley
Load Capacity - Standby	100%
Prototype Short Circuit Test	Yes
Voltage Regulator Type	Digital
Number of Sensed Phases	All
Regulation Accuracy (Steady State)	±1.0%

RATING DEFINITIONS

Standby - Applicable for a varying emergency load for the duration of a utility power outage with no overload capability.

SDC20 | 2.5L | 20 kW - AC

INDUSTRIAL DC DIESEL GENERATOR SET

EPA Certified Stationary Emergency



OPERATING DATA

POWER RATINGS

Single-Phase 120/240 VAC @1.0pf 20 kW* Amps: 83
Circuit Breaker 100A

*18 kW output until 50 hour break-in complete

FUEL CONSUMPTION RATES*

Diesel - gph (lph)	
Percent Load	Standby
50%	1.02 (3.78)
75%	1.37 (5.18)
100%	1.81 (6.85)

* Fuel supply installation must accommodate fuel consumption rates at 100% load.

COOLING

		Standby
Coolant Flow per Minute	gpm (lpm)	15.9 (60)
Coolant System Capacity	gal (L)	6 (22.7)
Heat Rejection to Coolant	BTU/hr	238,200
Inlet Air	cfm (m ³ /min)	67.1 (1.9)
Max. Operating Ambient Temperature (Before Derate)	°F (°C)	104° (40°)
Maximum Radiator Backpressure	in H ₂ O	0.50

COMBUSTION AIR REQUIREMENTS

	Standby
Flow at Rated Power cfm (m ³ /min)	88 (2.49)

ENGINE

		Standby
Rated Engine Speed	rpm	1800
Horsepower at Rated kW**	hp	33.5
Piston Speed	ft/min	1220.47
BMEP	psi	96.5

EXHAUST

		Standby
Exhaust Flow (Rated Output)	cfm (m ³ /min)	193 (328)
Max. Backpressure (Post Silencer)	inHg (kPa)	1.96 (6.67)
Exhaust Temp (Rated Output - Post Silencer)	°F (°C)	928 (497.7)

** Refer to "Emissions Data Sheet" for maximum bHP for EPA and SCAQMD permitting purposes.

Deration – Operational characteristics consider maximum ambient conditions. Derate factors may apply under atypical site conditions. Please consult a Generac Power Systems Industrial Dealer for additional details. All performance ratings in accordance with ISO3046, BS5514, ISO8528 and DIN6271 standards.