

## ATTACHMENT 3



**Andrew Wireless Solutions**  
Tel: (203) 527-9843  
Fax: (203) 527-9463  
www.commscope.com

October 30, 2013

**Subject: MTC3607 12½' Wide Platform Kit**

The MTC3607 12½' Wide Platform Kit referenced above has been analyzed to determine its capacity to structurally accommodate the criteria and loading specified below (ref. attached drawings):

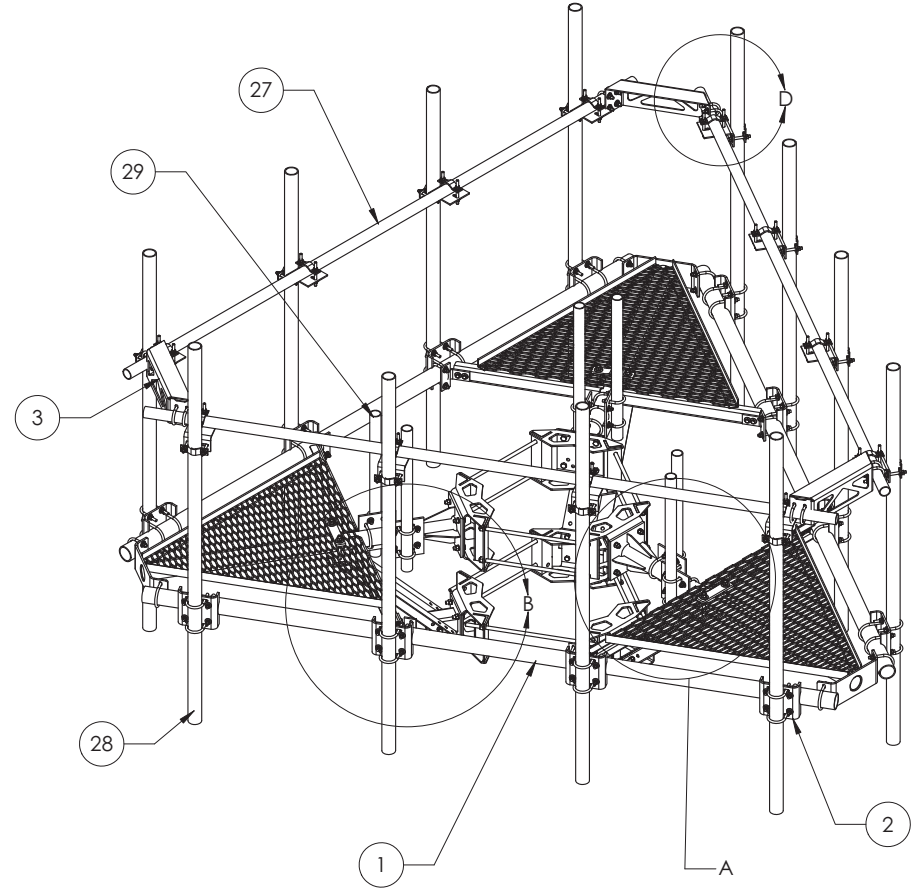
- Criteria: 2009 ANSI/TIA 222-G-2, Exp. C, SC II, Topographic Category 1  
2010 CBC Section 1609.1.1, Exception 5  
2009/2012 IBC Section 1609.1.1, Exception 5
- Wind Speed: 110 mph (3-Second Gust) Basic Wind Speed
- Platform Elev.: Not to Exceed 250 ft. AGL
- Loading: (12) – 8' x 12" wide Panel Antennas (4 per sector)  
(21) – RRU's – 30" x 15" Max. dimensions (7 per sector)  
\*\* Weight of antennas, equipment, and ice shall not exceed 5,000 lbs.
- Materials: Pipes: ASTM A53/A500 Gr. B or C  
Plates: ASTM A36  
U-bolts: ASTM A36  
Hdwr: ASTM A325 or SAE J429 Gr. 5

**Based on our analysis of the antenna and equipment loading indicated above, the MTC3607 12½' Wide Platform Kit is structurally adequate for the criteria stated above.**

**The MTC3607 12½' Wide Platform Kit is structurally adequate to accommodate two (2) 250 lb. crewman in a wind not exceeding 15 mph. Crewman shall be tied off to the pole structure while on the platform.**

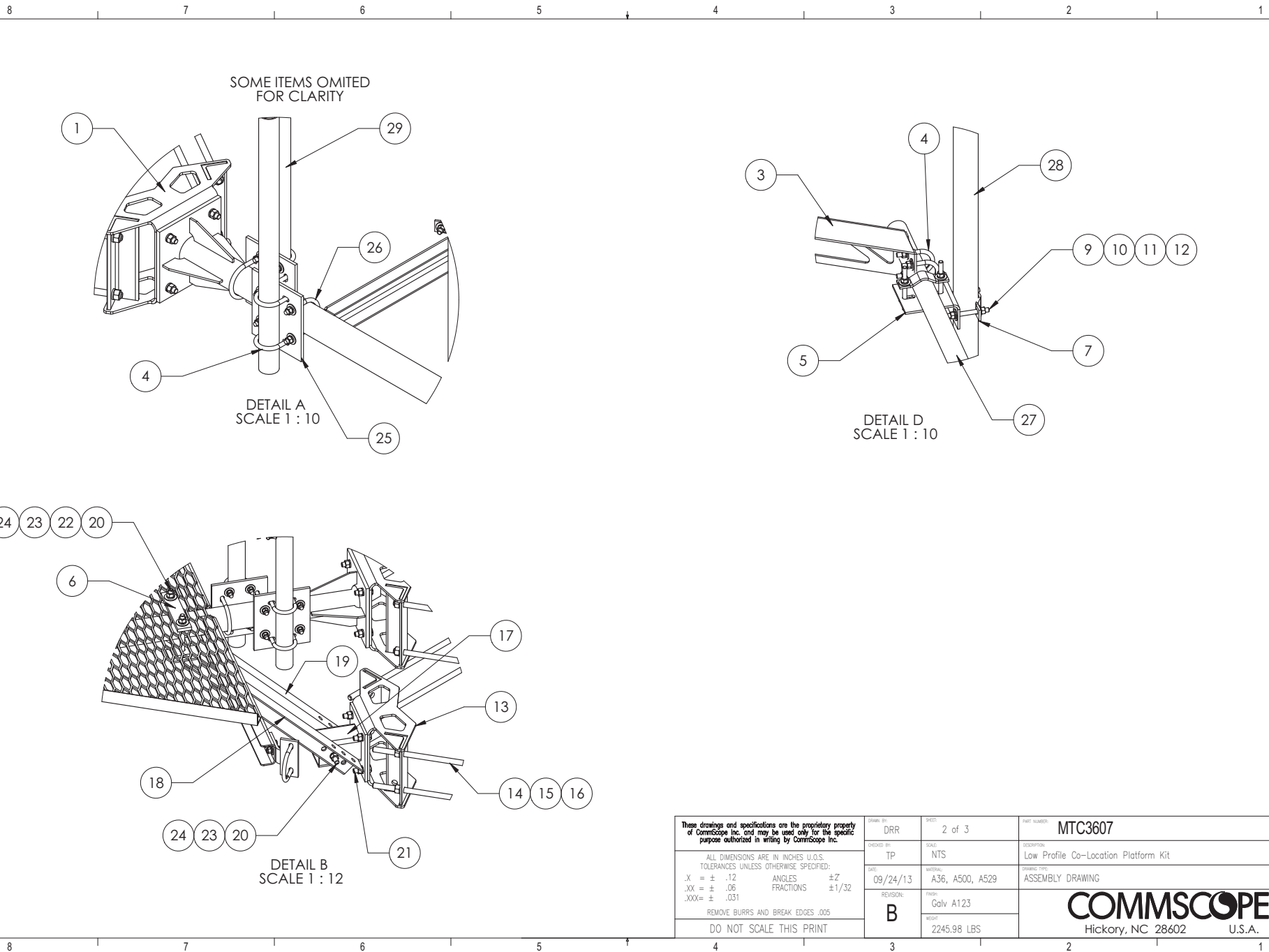
ITEM	PART NO.	DESCRIPTION	QTY.	WEIGHT
1	MC-PK12S-B	LOW PROFILE CO-LOCATION PLATFORM KIT	1	859.05 LBS
2	MT-219M-H	3.5" OD X 2-7/8" OD Clamp Bracket Assembly	12	12.78 LBS
3	MT19525	Corner Weldment	3	14.76 LBS
4	GUB-4240	1/2" X 2-1/2" X 4" GALV U-BOLT	24	0.56 LBS
5	XAU01	Angle BRK	12	3.59 LBS
6	MTC323704	Clamp Bar	6	2.37 LBS
7	ACP10	1.5" - 3.5" O.D. CLAMP HALF	24	0.61 LBS
8	DCP10	SMALL CLAMP HALF	6	2.21 LBS
9	MT-379-6	1/2" X 6" GALV THREADED ROD	48	0.33 LBS
10	GWf-04	1/2" GALV FLAT WASHER	96	0.03 LBS
11	GWL-04	1/2" GALV LOCK WASHER	96	0.01 LBS
12	GN-04	1/2" GALV HEX NUT	96	0.04 LBS
13	MTC306503	CW 1030 Ringmount Weldment	3	28.02 LBS
14	MT38430B7	3/4" X 30" GALV THREADED ROD	6	3.76 LBS
15	GWL-06	3/4" GALV LOCK WASHER	12	0.04 LBS
16	GN-06	3/4" GALV HEX NUT	12	0.14 LBS
17	MTC313802	Kicker Mount Standoff	3	13.08 LBS
18	MTC323701	Left Kicker	3	14.36 LBS
19	MTC323702	Right Kicker	3	14.36 LBS
20	MT-381-8	5/8" X 8" GALV THREADED ROD	9	0.69 LBS
21	GB-0520A	5/8" X 2" GALV BOLT KIT (A325)	12	0.27 LBS
22	GWf-05	5/8" GALV FLAT WASHER	12	0.06 LBS
23	GWL-05	5/8" GALV LOCK WASHER	18	0.03 LBS
24	GN-05	5/8" GALV HEX NUT	18	0.08 LBS
25	XP2030.01	CROSSOVER PLATE $\phi$ 2-3/8" O.D. TO $\phi$ 3-1/2" O.D.	6	7.30 LBS
26	GUB-4355	1/2" X 3-5/8" X 5" GALV U-BOLT	12	0.71 LBS
27	MT-651-150	$\phi$ 2.375" OD x 150" PIPE	3	45.42 LBS
28	MT54696	$\phi$ 2.875" O.D. X 96 PIPE	12	46.51 LBS
29	MT-649	2 3/8" x 36" Pipe	6	10.90 LBS

REVISIONS				
REV.	ZONE	DESCRIPTION	BY	DATE
A		INITIAL RELEASE	MSM	10/09/13
B		MT-219M-H WAS MT-219L-H	MSM	10/10/13



- NOTES:
1. ALL METRIC DIMENSIONS ARE IN BRACKETS.
  2. FITS MONOPOLES  $\phi$ 10" -  $\phi$ 30".

These drawings and specifications are the proprietary property of Commscope Inc. and may be used only for the specific purpose authorized in writing by Commscope Inc.		Drawn By: DRR	Sheet: 1 of 3	Part Number: MTC3607
ALL DIMENSIONS ARE IN INCHES U.S. TOLERANCES UNLESS OTHERWISE SPECIFIED: .X = $\pm$ .12 ANGLES $\pm$ Z .XX = $\pm$ .06 FRACTIONS $\pm$ 1/32 .XXX = $\pm$ .031		Checked By: TP	Scale: NTS	Description: Low Profile Co-Location Platform Kit
REMOVE BURRS AND BREAK EDGES .005		Date: 09/24/13	Material: A36, A500, A529	Drawing Type: ASSEMBLY DRAWING
DO NOT SCALE THIS PRINT		Revision: B	Finish: Galv A123	 Hickory, NC 28602 U.S.A.
			Weight: 2245.98 LBS	



<small>These drawings and specifications are the proprietary property of Commscope Inc. and may be used only for the specific purpose authorized in writing by Commscope Inc.</small>		<small>DRAWN BY:</small> DRR	<small>SHEET:</small> 2 of 3	<small>PART NUMBER:</small> MTC3607
<small>TOLERANCES UNLESS OTHERWISE SPECIFIED:</small> .X = ± .12      ANGLES = ±Z .XX = ± .06      FRACTIONS = ±1/32 .XXX = ± .031		<small>CHECKED BY:</small> TP	<small>SCALE:</small> NTS	<small>DESCRIPTION:</small> Low Profile Co-Location Platform Kit
<small>REMOVE BURRS AND BREAK EDGES .005</small> DO NOT SCALE THIS PRINT		<small>DATE:</small> 09/24/13	<small>MATERIAL:</small> A36, A500, A529	<small>DRAWING TYPE:</small> ASSEMBLY DRAWING
		<small>REVISION:</small> B	<small>FINISH:</small> Galv A123	 Hickory, NC 28602      U.S.A.
			<small>WEIGHT:</small> 2245.98 LBS	

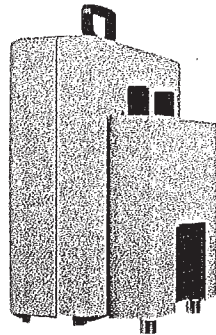


## ATTACHMENT 4

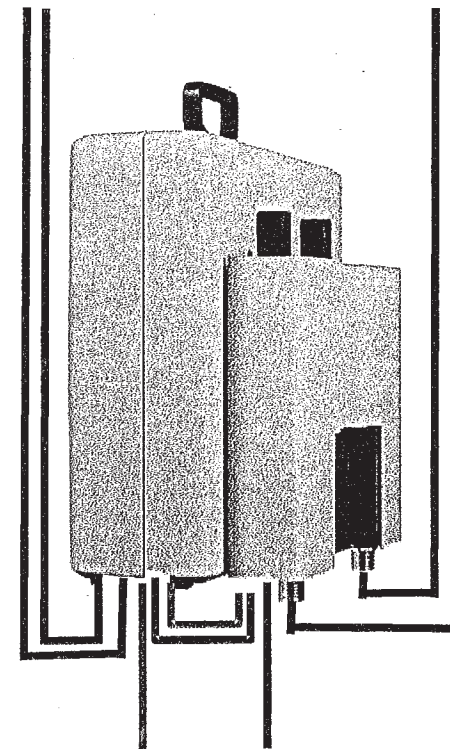
# RRUS A2 Module



- › **RRUS A2 Module**
  - › 2 Rx expansion module for RRUS
- › Works with RRUS 01, 11 and 12
  - › Eases deployment for 4Rx diversity

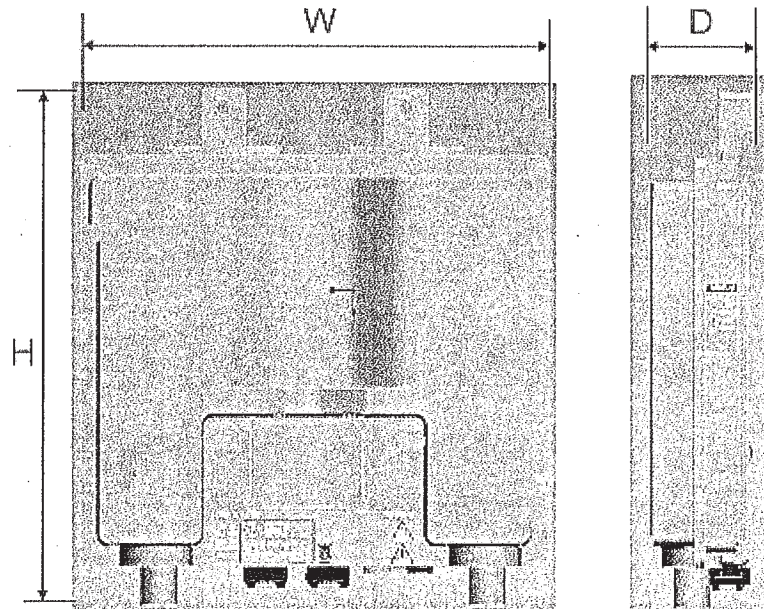


**Antenna 1 & 2      Antenna 3 & 4**



**CPRI - 48 VDC**

# RRUS A2 A2 Building practice

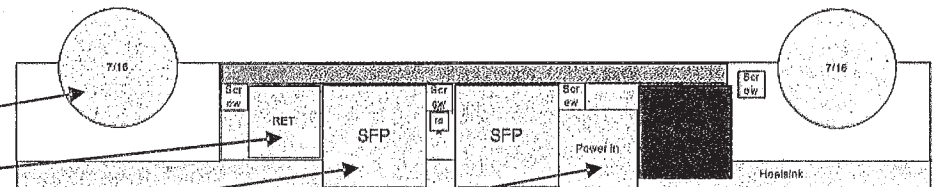


## PRELIMINARY DATA

	No solar shield	With solar shield
Height (H)	12.8" (325.5mm)	12.8" (325.5mm)
Width (W)	14.7" (374mm)	15.0" (380mm)
Depth (D)	3.2" (81mm)	3.5" (88mm)
Weight		15 lbs

### External Connections

- 2 x 7-16 Ant Connections
- RET Interface
- 2 CPRI Interfaces
- Power In / Out, to RRU





# Installation concept

## Back to back with RRU

